

For a healthy waterway, make one call.

We manage aquatic plants, control algae, conduct water quality testing, stock game fish, and install aeration systems and nuisance geese deterrents, all with an environmentally sensitive approach.

Look to us for product equipment and sales as well.



For A Professional Consultation,
Call Rich Rollins at (630) 893-0810
email: richrollins@aquaticweed.com or www.aquaticweed.com
A division of Clarke Environmental Mosquito Management Co. Inc.



28322 Ballard Road
Lake Forest, IL 60045

Telephone: 847-281-9400
Fax: 847-281-9780

- * Irrigation & Pump Station Design
- * Irrigation Installation
- * Drainage Systems
- * Pump Station Installation
- * Irrigation Pipe & Supplies
- * Pond Aerators

RTV900

The utility vehicle that's built as tough as a tractor.



Hard working, dependable and tough: the Kubota RTV900.

- 21.6 HP diesel engine - Designed by Kubota engineers
- Hydrostatic power steering - Handle tight turns with ease
- Variable Hydrostatic Transmission (VHT) - No belts. No maintenance. No loss of torque.
- Hydraulic wet disc brakes - Smooth braking, even in mud and water
- 4-wheel drive - Power through the roughest terrain
- Ground-hugging suspension - Fully independent front and semi-independent rear suspension
- 4 different models - General, worksite, turf and recreational

Tractor tough. Kubota smart.
Martin Implement, Inc.
16400 104th. Ave.
Orland Park, IL 60467
(708) 349-8430

Kubota

EVERYTHING YOU VALUE
www.kubota.com



Growers of Quality Sod

SERVICE!

LOCAL GROWING FOR
EASY PICKUP OR QUICK DELIVERY.
DELIVERY ON TIME, EVERYTIME.

QUALITY!

FEATURING
ELITE KENTUCKY BLUEGRASS,
BENTGRASS SOD, AND
TURF-TYPE FESCUE
• LOWER MAINTENANCE
• MORE DROUGHT
& SHADE TOLERANT
• BETTER WEAR RESISTANCE

PRICE!
CALL FOR A QUOTE

NEW
PRODUCT



630-557-2900

MAIN STREET
11 MILES WEST
OF BATAVIA, IL



Brian S. Winkel
Territory Manager
Professional Products



Syngenta Crop Protection, Inc.
835 Myers Road
Sugar Grove, IL 60554
Mobile 317-694-0856
Fax 630-466-3784
Toll Free 800-334-9481
www.syngentaprofessionalproducts.com
brian.winkel@syngenta.com

For further assistance, contact our
Customer Resource Center at 800-Syngenta (866-796-4368)

Brian Winkel is finally settled back to Chicago with his new contact information above. Please contact him with any needs you may have.

OPEN 24/7
www.lesco.com



- Technical Information
- Weather Information
- Product Information
- Expert Answers

Paul Yerkes **Sam Wineinger**
630-514-9373 630-768-9275

Larry Chirico **Rich Wall**
224-629-3061 815-341-4438

LESCO®

LESCO is a registered trademark of LESCO Technologies LLC



Quality Products and Services Since 1928

- **LEGEND Low Mow Blend**
(100% Elite Ky Bluegrasses)
- **LEGEND Fine Fescue Blend**
(100% Fine Fescues)
- **LEGEND Super Pro II**
(70% Elite Ky Blues/10% Fine Fescues)
- **LEGEND Super Pro III**
(100% Elite Ky Bluegrasses)
- **L-93**
- **We have all the Penn pals in stock**

27310 W Case Rd
Wauconda, IL 60084
847.526.0007

7851 183rd St
Tinley Park, IL 60477
708.532.4723
www.conservfs.com

4304 S Beaumont Ave
Kansasville, WI 53139
262.878.2048

Where Turf Professionals Grow™



November 28-30, St. Charles

Innovative turfgrass education is the hallmark of the IPTC. Your attendance at the 2006 IPTC demonstrates your professionalism and commitment to advancing yourself and your career. There is simply no better regional meeting than the 2006 IPTC for a vigorous and beneficial exchange of ideas. GCSAA Education Points will be available for all sessions. Reward your staff and register them for the full conference package for only \$40 each.

The IPTC is sponsored by the Illinois Turfgrass Foundation

Mark Your Calendar Today

2006 Golf Education Highlights

Rolling Your Way to Disease Free Greens - Dr. Thom Nickolai
Managing Root Diseases of Bentgrass - Dr. Lane Tredway
Novel Applications of PGRs - Dr. Bruce Branham
Building a Fungicide Program - Dr. Rick Latin
Illinois Bentgrass Management - Dr. Henry Wilkinson
Optimizing Dollar Spot Control - Dr. Lane Tredway
Where's the EPA Now? - Mr. Bruce Paulsrud
Nematodes: Verifiable and Real Threats - Dr. Derek Settle
Choices for Unmown Roughs - Dr. Tom Voigt
Managing Root Diseases of Bentgrass - Dr. Lane Tredway
Career Guidance for the Modern Golf Course Superintendent - Mr. Paul Vermeulen
Modern Pond Management - Mr. Erwin McKone
Dates or Conditions for IPM - Dr. Randy Kane

Plus many more - over 60 education sessions to choose from, including Education Tracks for Equipment Technicians and specialized training for your entire staff. Don't forget about the Trade Show where you can see over 90 suppliers to meet all your management needs.



**Charles J. Fiore
Nursery**

*Chicagoland's
Premier Wholesale
Nursery Center*

Visit us online for a complete listing
of our premium grade inventory
www.cjfiore.com

16606 W. Highway 22
Prairie View, IL 60069

Phone 847-913-1414
Fax 847-913-9690



**Give Your Fairways A Taste Of What Your
Greens Have Enjoyed For Years**

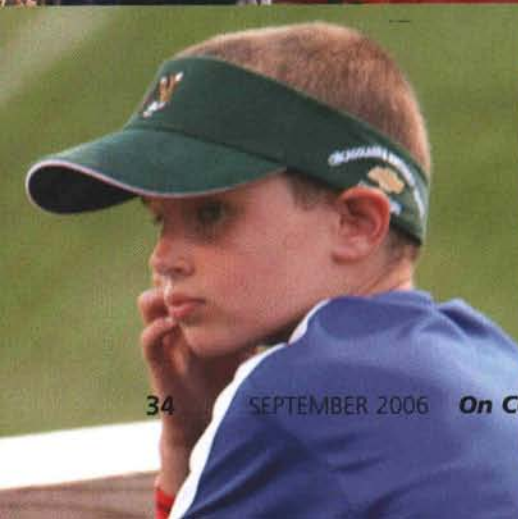
 **Emerald Isle Solutions™**

**SEQUENTIAL
Fairway**

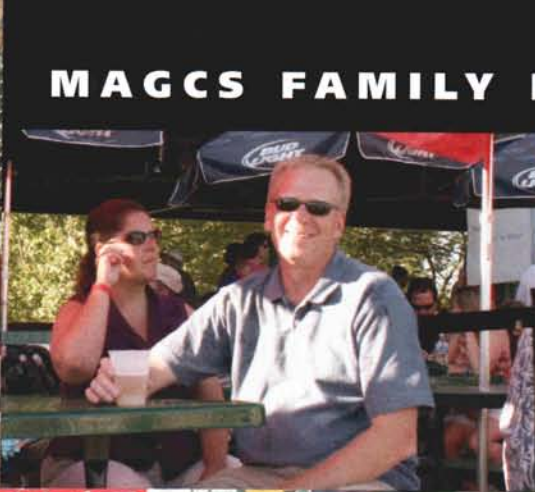
- ❖ Excellent to combine with PGR programs.
- ❖ Give your fairways sustained color without all the growth and disease problems that come with it.
- ❖ Chelated with the same Seaplant extracts that make CPR the standard in BioStimulants.

PO Box 1325
Frankfort, IL 60423

♦ 800-732-9401
♦ Fax: 815-463-8395



MAGCS FAMILY NIGHT PICNIC





*"Golf Course Work
a Specialty"*

LEMONT PAVING CO.

EST. 1957

MURPHY'S

11550 Archer Ave., Lemont, IL 60439
(630) 257-6701 • FAX 630-257-5194



Specializing in Bedding Plants
Large Variety Fall Mums

ANTON'S Greenhouses & Garden Centers

Rick & Bob Anton
ANTON'S OF KENOSHA
9140 Cooper Rd. (51st Ave.)
Kenosha, WI 53142
414/694-2666

Gary Anton
ANTON'S OF EVANSTON
1126 Pitner Avenue
Evanston, IL 60202
847/864-1134

BRYAN WOOD

1-800-748-7497

COMMERCIAL TURF & TRACTOR

Deep Tine Experts

Sales • Contracting **WaterWick**



Wiedenmann

Terra Spike
Terra Combi
Terra Top



AUTHORIZED DISTRIBUTOR
Bryan Wood, owner

www.commercialturfandtractor.com



Timberline

Golf Course Remodeling & Renovation

D.B.A. Bill Boyd

30 YEARS OF QUALITY SERVICE
FEATURE SHAPING IS OUR BUSINESS

411 York Street, Bolingbrook, Illinois 60440
(630) 759-7807, Cell (630) 732-9088



T. J. EMMERICH ASSOCIATES, INC.
Irrigation Consultants

Office (262) 538-2776
Fax (262) 538-0118
Cell (262) 719-2728
EMAIL: tje@netstream.net

W28620 Beverly Lane
Hartland, WI 53029

Thomas J. Emmerich, CID, ASIC

Paving the Finest Golf Courses on the North Shore

KAPLAN
TRUCKING & PAVING CO. INC.

847 • 949 • 1500

M.A.G.C.S. Member

P.O. Box 200 • Lincolnshire, IL 60069 • www.KaplanPaving.com

RIVERWALLS LTD.

P.O. Box 562, Barrington, Illinois 60011

GOLF COURSE ENHANCEMENT

Shoreline Stabilization, Creek Crossings
Stream and Spillway Re-Construction

DARRYL SCOTT BURKETT
C.E.O.

1-888-254-4155
OFFICE: 847-382-9696
FAX: 847-516-0116
MOBILE: 847-366-5400

E-mail: riverwalls@aol.com

SOIL and WATER SCIENTIFIC ANALYSIS

V. J. ZOLMAN & SON

Turfgrass Soil and Irrigation Water Specialists Since 1964

Locally based services include Physical Soil Testing,
Tissue, Lime and Audubon/Environmental Analysis

Fax (630) 964-9769 Tel (630) 964-9702

7100 Blackburn Ave. * Downers Grove, IL 60516
Lab Services by Brookside Laboratories Inc.

Life is too short to Plant Small Trees



*If the question is trees...
the answer is GRO!*



HORTICULTURAL ENTERPRISES, INC.

14440 Marengo Road • Union, IL 60180 • 847-669-8658



For more about...

**Pegasus™ L, Pegasus DF, Firebird® GC,
Vital®, Kestrel®, Lucid™, Current™,
Knighthawk® & Symmetry™**

**Contact: Rick Grant at 317-776-9983
or visit www.phoenixenvcare.com**

Pegasus, Knighthawk, Current and Symmetry are trademarks of Phoenix Environmental Care LLC. Vital is a registered trademark of Luxemour-Pamol, Inc. Lucid is a trademark of Rotam USA. Firebird and Kestrel are registered trademarks of Phoenix Environmental Care LLC. Firebird GC is a Restricted Use Pesticide. Always read and follow label directions.

TrakMats™

Ground Cover Mats For The Professional

- * Tough, Lightweight
- * Power Cleat Traction
- * 100% Original Material
- * UV protected
- * Light color prevents burnt grass
- * Unaffected by heat & cold
- * Hand cutouts for lifting



**No more Ruts,
Damaged Lawns or
Weather Delays.**

**No more Heavy,
Wet, Rotten,
Broken, Slippery
Plywood.**

PO Box 1325
Frankfort, IL 60423
1-800-732-9401
1-815-463-8495 Fax

BTSI



Your Single Source for:

- pH Control
- Fertigation
- Injection Equipment
- Irrigation System Monitoring & Alarm

Ask about our NEW 990v!



- P** VFD Technology
- P** Eliminates Overfeed Spikes from On/Off Control
- P** Affordable
- P** Remote Control from Irrigation Central
- P** Optimize Treatment Costs
- P** Easy to Use

PRODUCT * EQUIPMENT * SERVICE * SUPPORT

For additional info or to schedule a demo, call 800.677.8097



**KOELPER
GOLF COURSE
CONSTRUCTION
COMPANY**

DARRELL KOELPER
PRESIDENT

GOLF COURSE
CONSTRUCTION & REMODELING

MARENGO, IL

OFFICE: 815-568-8382
FAX: 815-568-1048
HOME: 815-568-6603

Jeff Leuzinger
President



Phone: 847.627.0538
Fax: 847.683.4087
E-mail: jeff@legacyproductsonline.com

47W115 Kelley Road
PO Box 485
Hampshire, IL 60140

TURF & ORNAMENTAL SUPPLY

WWW.LEGACYPRODUCTSONLINE.COM

Peter Leuzinger Consulting, Inc.

Landscape Design
Environmental Management
Turf Care

805 N. 1st St., Elburn, IL 60119
pv_leuzinger@yahoo.com
847-494-2992 fax 630-365-9354



Bayer Environmental Science

Kerry Anderson
Field Sales Representative

Tel. (847) 910-3130
Fax (815) 356-9577
Kerry.Anderson@bayercropscience.com



360 Schaumburg Rd.
Streamwood, IL 60107

**CLAUSS
BROTHERS, Inc.**
GOLF COURSE
CONSTRUCTION AND RENOVATION
LARGE TREE MOVING

(630) 830-7405
FAX (630) 830-9652



- Precision Tank Tightness Testing
- Upgrades for Tanks & Leak Detection Systems
- Install Underground & Aboveground Fuel Tanks
- Removal of Tanks

Your Complete, Professional Tank Experts
Please contact us at:
1-800-773-Tank or 630-375-6121

On Course and the MAGCS thank our September advertisers.

Accurate Tank Technologies	JW Turf
Anton's Greenhouse	Kaplan Trucking and Paving
Aquatic Weed Technology	Koepler Brothers
Arthur Clesen, Inc	Legacy Products
BASF, Inc	Lemont Paving Co.
Bayer Environmental Science	Lesco, Inc.
Big Head Mulch, LLC	Lohmann Golf Designs
Brookside Laboratories Consultant	Martin Design Partnership Ltd
Bruce Company, The	Martin Implement Sales
BTSI	Master of the Links
Burriss Equipment Company	Milorganite
Central Sod Farms	Nels J Johnson Tree Care Experts
Charles J. Fiore Co	Old Dutch Sand Company
Chicagoland Turf	On Target Animal Control
Clauss Brothers, Inc.	Palatine Oil Company
Commercial Turf and Tractor	Patten Industries
ConservFS, Inc	Peter Leuzinger Consulting
DHD Tree Products	Phoenix Environmental Care
Dirt-N-Turf Consulting	Prime Turf, Inc.
Duntzman Turf Farms	Raymond Hearn
GreenCycle, Inc.	Golf Course Architecture
GRO Horticultural, Inc	Riverwalls Ltd.
Growing Solutions, Inc	Syngenta
H & E Sod	Tech Sales
Halloran & Yauch	Timberline
Huber Ranch Sod Nursery	TJ Emmerich Associates
Hydrologic	Turf Professionals EC
Illinois Pump, Inc.	Waupaca Sand & Solutions



**ILLINOIS
PUMP, INC.**

2525 S. Clearbrook Drive • Arlington Heights, Illinois 60005
Your reliable source for pumps, motors, equipment and professional service

24-Hour Emergency Service
Call 847-ILL-PUMP (847-455-7867)

♦ **WE RESPOND!** ♦

Sales • Service • Parts

James "Big Jim" Shanley

Phone: 847-439-9205 EXT 238

Fax: 847-439-9388

E-mail: jim@illinoispump.com



Master of the Links®

Course Accessories and A Lot More

www.masterofthelinks.com

Toll Free (888) TURF-888

Local (630) 545-2474

Fax (630) 545-2782



ON TARGET A.D.C.

On Target Animal Damage Control.
Specializes in the selective control of grubbing skunks
& Raccoons and Beaver removal. Our control
methods have proven to be 100% effective in
major golf courses in the Chicago area.

ON TARGET A.D.C.

PO BOX 469 CORTLAND, IL 60112

815-286-3073

wctech@ix.netcom.com



GrowinG Solutions, Inc.

Our solutions are your solution

Warren Shafer

toll free: 800/816-4041

phone: 815/462-1300

cellular: 815/341-0099

fax: 815/462-4036

email: warren@yourgrowingsolutions.com

P.O. Box 1059 New Lenox, IL 60451
www.yourgrowingsolutions.com

*Specializing in Bedding Plants
Large Variety Fall Mums*

ANTON'S
Greenhouses & Garden Centers

Rick & Bob Anton

ANTON'S OF KENOSHA

9140 Cooper Rd. (51st Ave.)

Kenosha, WI 53142

414/694-2666

Gary Anton

ANTON'S OF EVANSTON

1126 Pitner Avenue

Evanston, IL 60202

847/864-1134



*Member of the American Society
of Golf Course Architects*

Raymond Hearn
Golf Course Designs, Inc.

*Golf Course Restoration,
Renovation & Remodeling*

372 Highbanks Ct. Holland, MI 49424

Phone: 616-399-7686

E-mail: ray@rhgd.com

www.rhgd.com

Martin Design Partnership, Ltd.
Golf Course Architecture

630.482.2532 www.mdpltd.com

Glen Erin Golf Club

MIDWEST PERSONALITIES



Name: **Andy Thompson**
 Company: **Pearl Valley Organix, Inc. Healthy Gro**
 Job Title: **General Manager**
 MAGCS member since: **2004**
 Date of Birth: **9/19/62**
 Place of Birth: **Decatur, IL**
 Current Residence: **Pearl City, Illinois**

College/Degree: **U.S. Navy SOHK**

Spouse/Children: **Wife Angie – celebrating 25 years of marriage this July, and sons Jake (19) and Connor (12)**

My favorite childhood memory is: **My first trip to Wrigley Field with my brothers**

My personal hero: **My Dad**

My professional mentors: **Dave Thompson, Bob Yanda, Aaron Goy**

Favorite Actor: **Denzel Washington**

Favorite Musical Performer: **Bob Seger**

Favorite Restaurant: **Chili's**

Favorite "Pig Out" Food: **Pizza**

Favorite TV Show: **24**

Favorite Color: **Blue**

Favorite Professional Sports Team: **Chicago Bears**

Favorite Pro Athlete: **Michael Jordan**

Favorite Pro Golfer: **Fred Couples**

My Handicap Index: **14.2**

My favorite place to play golf is: **North Shore CC/Kemper Lakes – a tough choice**

My best/most memorable round ever: **74- Scovil Golf Club in Decatur during the 3rd round of the City Tournament. I gained 12 strokes on the leader and won my flight during the next round.**

The most interesting/exotic place I've ever traveled is: **2006 Masters**

The book I've been recommending lately: **Wisdom of Our Fathers by Tim Russert**

The last great movie I saw was: **Firewall**

In my spare time, I enjoy: **Spending time with my family and playing golf.**

Three words that best describe me: **Hardworking, honest, positive**

What I enjoy most about my job: **Visiting customers all over the country and playing courses that use Healthy Gro. Superintendents telling me how great the grass looks.**

What I dislike about my job: **Long hours in the spring.**
 I'm a Midwest member because: **To introduce myself and Healthy Gro to the Superintendents of MAGCS. It is a great organization.**

Thanks for your support.



OLD DUTCH SAND COMPANY

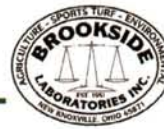
A Division of Jack Gray Transport Inc.

- VARIOUS BUNKER SANDS
- CART & ROAD MATERIALS
- COBBLES AND RIP RAP
- ALL GOLF COURSE AGGREGATES

Call (773) 374-2303
 Richard E. Mika (847) 228-9607
 (219) 938-7020



Dirt~n~Turf
 Consulting, Inc.



David Marquardt - Consulting Agronomist
 630-251-1511 Dave@dirt-n-turf.com

www.dirt-n-turf.com

Soil, Tissue, Irrigation, & Physical Analysis - Cultural Consultation - Audubon Certification