

never cease. Remember when you, the superintendent, started in the profession? You wanted to learn all you could and set goals for yourself and your career. Your assistant feels the same way.

With a limited number of golf courses and many people vying for those head positions, self-promotion and betterment is imperative. Every year, we invite all members to attend the assistants' workshop. This is where a professional career-planner provides good ideas on how to prepare and present for a superintendent interview and offers other career-building advice.

To get that interview for the superintendent position, assistants must know about prospective superintendent openings. A service that the MAGCS provides to its members is the Employment Referral Service (ERS). Once an opening is posted online at www.magcs.org, it is up to you, the assistant, to get your resumé to that employer and hopefully earn that interview. Furthermore, most members of the Association are more than willing to provide any help or advice that might be beneficial in your career. We want to see our profession thrive and flourish for years to come.

Assistants who strive to better themselves through career development will be an ever-improving asset to your organization while you help guide them to the next level.

How does having my assistant belong to the MAGCS benefit me, the superintendent?

One mission for the MAGCS is to give our membership all of the tools necessary to achieve success. Aren't these tools the same for superintendents and assistants? **They are!** In today's economy, career development, leadership and educational development are never-ending.

Think of this from the most selfish perspective. Whether you are a superintendent or an assistant, you need to make sure you are equipped with all of the tools necessary for success. By providing these tools to your assistants, you make them better trained and more motivated employees in the process. This makes your job easier! Our goal is to provide that for all our members.

Finally, a call-out to all superintendents—if your assistant is not currently part of the MAGCS, please sit down with him or her and discuss the benefits of membership. Ask your assistant to join. Not only will they appreciate the invitation, so will you.



You take
care of
the course...

...we'll take
care of the
mosquitoes.

That's what we do. That's all we do.

Clarke's integrated pest management approach keeps nuisance mosquitoes off your course, and happy golfers coming back.

Call us today.

e-mail: georgebalis@clarkemosquito.com

1 800 942 2555

website: www.clarkemosquito.com

"Serving communities for over 50 years."



**Clarke Environmental
Mosquito Management, Inc.**

159 Garden Avenue • Roselle, IL 60172

OLD DUTCH SAND COMPANY

A Division of Jack Gray Transport Inc.

- VARIOUS BUNKER SANDS
- CART & ROAD MATERIALS
- COBBLES AND RIP RAP
- ALL GOLF COURSE AGGREGATES

Call
Richard E. Mika

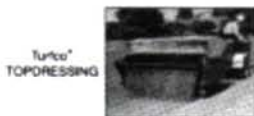
(773) 374-2303
(847) 228-9607
(219) 938-7020

COMMERCIAL TURF & TRACTOR

BUILT ON EXPERIENCE, SERVICE & CUSTOMER SATISFACTION!

QUALITY CONTRACTING, SERVICE, and SALES!

- Terra Spike® Deep-tine Aeration • Fairway Overseeding or Slit Seeding • Custom Putting Green Seeding
- Fairway Aeration - Deep or Shallow • Complete Turf Renovation • Greens Core Collecting



1-800-748-7497

Bryan Wood, Owner

Serving the Industry for over 20 years

Check out our demo and trade-in equipment for sale → www.commercialturfandtractor.com

Home of Bryan's Blend Barbecue Sauce!

www.bryansblend.com

***For a healthy waterway,
make one call.***

We manage aquatic plants, control algae, conduct water quality testing, stock game fish, and install aeration systems and nuisance geese deterrents, all with an environmentally sensitive approach.

Look to us for product equipment and sales as well.



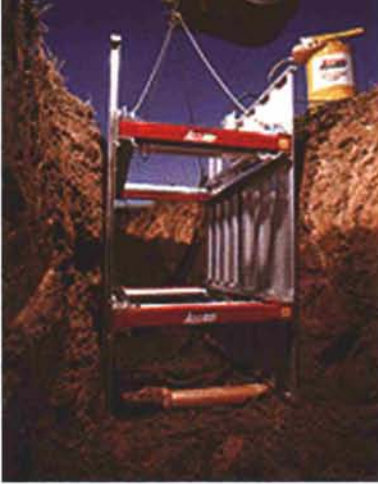
For A Professional Consultation,
Call Rich Rollins at (630) 893-0810
email: richrollins@aquaticweed.com or www.aquaticweed.com
A division of Clarke Environmental Mosquito Management Co. Inc.



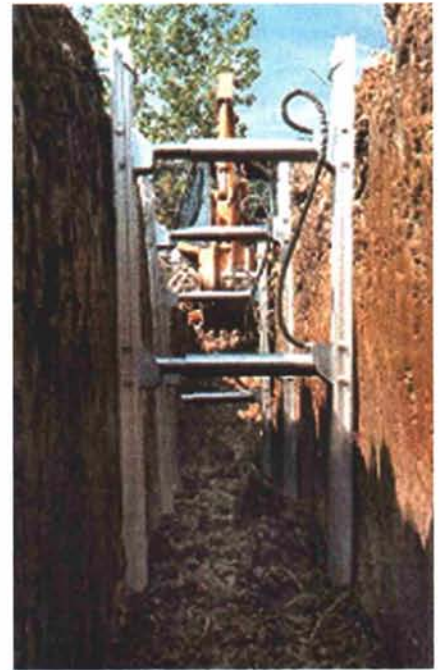
28322 Ballard Road
Lake Forest, IL 60045

Telephone: 847-281-9400
Fax: 847-281-9780

- * Irrigation & Pump Station Design
- * Irrigation Installation
- * Drainage Systems
- * Pump Station Installation
- * Irrigation Pipe & Supplies
- * Pond Aerators



Excavation Safety: Your Life May Depend On It



A couple months ago, a worker in Bolingbrook was installing a sewer line for a new subdivision when an object struck him. His injury prevented him from exiting the trench, which was on the verge of collapsing. The trench was 10 feet deep and was cut in unstable soil. More than an hour later, rescue workers were able to pull him out after shoring the muddy walls of the trench. After an airlift to the hospital, the injured worker was released the same day.

**OSHA states
that excavating
work at or
below five feet
in depth requires
some sort of
adequate protection
system.**

With golf course construction or renovation, excavation work is inevitable. Included in this earth-moving process comes the subsurface installation of many feet of line and tile such as water, irrigation, sewer, gas, telephone, electric, drainage, etc.

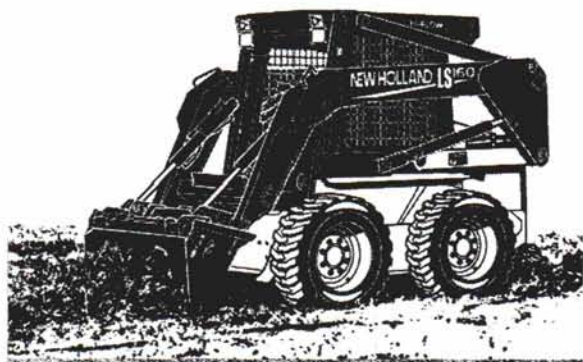
When installing pipe, conduit, etc., the professional must know how to safely do the job. Understanding what the working conditions are before beginning this type of subsurface work is paramount. Before working underground, ask yourself several questions:

- At what depth will I be working?
- If I have to enter this hole/trench, at what depth will I need to take extra security measures to ensure the stability of the area?
- If necessary, can I make a quick exit?
- Whom can I contact if I have questions about excavation safety?

It is very important to know at what depth and in what kind of area you will be working. Most irrigation repairs or drainage installation occur within a few feet of the surface. But it is those instances that require you to go into a hole or trench below a depth at which you feel comfortable that make the work all the more nerve-wracking.

The Occupational Safety and Health Administration (OSHA) states that excavating work at or below five feet in depth requires some sort of adequate protection system. This protection is in the form of a sloping or shoring system of the trench. The sloping system is where the sides of the trench are tapered at an angle. This sloping is to prevent cave-ins; basically, for every one-and-a-half feet down, you need to go one foot out. Besides a sloping system, a shoring system may also be used. These shoring systems are mechanical means to prevent cave-ins. Many types of devices are used but the pictures above give you a sense of what you can use in place of sloping. They may be wooden or steel supports. However, OSHA requires that a professional engineer certify these shoring systems for your particular situation.

(continued on page 35)



Lewis Equipment Co.
Call Avery Harris
847.537.6110

2 Locations to Serve You

55 E Palatine Rd
Prospect Hts, IL 60070

5220 S Rt 31
Crystal Lake, IL 60012



RENTALS

SALES

PARTS

SERVICE

www.lewisequipment.com



Global Distributor of

PHAIRWAY
WATER TREATMENT AMENDMENT

announces the latest in
Irrigation Chemical Injection Equipment



pH Control AND Fertigation
Applications in one unit!
New IntelliDose Controller
Technology



- ♦ Improved Sensor Response
- ♦ Multiple pH Set Point Flexibility
- ♦ Remote Control Capability
- ♦ Proven Reliable Components
- ♦ VFD Controller / Motor

Call for a free demonstration
800.677.8097

Visit our new website at www.primeturf.com



75 Years of Quality Service, Products & People

- LEGEND Low Mow Blend
(100% Elite Ky Bluegrasses)
- LEGEND Fine Fescue Blend
(100% Fine Fescues)
- LEGEND Super Pro II
(70% Elite Ky Blues/10% Fine Fescues)
- LEGEND Super Pro III
(100% Elite Ky Bluegrasses)
- L-93
- We have all the Penn pals in stock

27310 W Case Rd
 Wauconda, IL 60084
 847.526.0007

7851 W 183rd
 Tinley Park, IL 60477
 708.532.4723

4304 S Beaumont Ave
 Kansasville, WI 53139
 262.878.2048

In matters like this, you must also use some common sense. Always use the buddy system. If you are in a tight spot, a partner will be able to get you out or can summon help. Before you enter this type of area, have a plan of action. If the area is going to collapse, it will not stop to let you think about how you will get out. Know what you will do if you need to make a quick exit.

OSHA asks that any questions pertaining to this matter be directed to the area office. You can access the location and phone number of your area office by visiting the OSHA Web site at www.osha.gov.

The worker in Bolingbrook was lucky. During the OSHA investigation, the inspector did not see any cave-in protection measures in place to protect the worker. OSHA will further investigate the site before issuing citations or penalties. Workplace safety should never be taken lightly.

Workplace safety adds value to the workplace, to health and to life. Remember, SAFETY FIRST.



*Always use the
buddy system.
If you are
in a tight spot,
a partner will
be able to get
you out or
can summon help.*

References

Lecture notes. Dr. Gary Erisman,
Illinois State University.


OSHA Web site. www.osha.gov.

Attention MAGCS Offspring!

Remember, the April 25th deadline to submit your thoughts or pictures of what dad really does at work all day is fast approaching. The children of MAGCS superintendent, assistant superintendent AND commercial members are invited to participate. And if it's actually mom who's in the turf industry, go right ahead and tell or show us what mom is doing at work. Please e-mail Cathy Ralston at on_course@hotmail.com or mail comments/essays/artwork to her attention at 68 S. Waterford Dr., Round Lake, IL 60073. Photographs of dad (or mom) and child(ren) in a golf setting are also welcome for the special feature to run in our June issue.



A Continuing Tradition of Quality
in Golf Course Renovation
Restoration and New
Construction

 **the
bruce
company**
OF WISCONSIN, INC.

[608] 836-7041 FAX: [608] 831-4236
WWW.BRUCEGOLF.COM

the Bull Sheet

John Gurke, CGCS
Contributing Editor

DATES TO REMEMBER

April 14 — Adult CPR and AED training course at the American Red Cross Community Facility, 1550 W. 88th St., Chicago. GCSAA offers service points for successful completion of this course. Go to www.chicagored-cross.org/classes for more info.

April 26 — MAGCS monthly meeting at Nettle Creek Country Club, Pat Norton, CGCS host.

May 8 or 15 — Audubon International's Annual Birdwatching Open. More information on this event (including confirmation of date) will be available soon.

May 18 — MAGCS/ITF Spring Golf Day at Seven Bridges Golf Club, Don Ferreri host.

This month's MAGCS meeting will be at Nettle Creek Country Club in Morris, IL, with Pat Norton, CGCS serving as our host. For those of you wondering where Morris is, don't fret—it's very easy to get to from either I-88 or I-80 to Route 47 south. This is the first golf event of the year, and the only scramble format we will play this season. The education portion of the day will be provided by Dr. Brian Horgan of the University of Minnesota, who will speak on "The Fate of Phosphorous in the Environment." GCSAA education points (0.1 EPs) have been applied for. See you there.

This is a reminder to all of you parents out there—you have until the 25th of this month to send in your children's submissions for our Father's Day feature, "What My Dad Does at Work," to be showcased in the June issue of this very magazine. Please encourage your kids to put

into words (or even pictures) their own ideas of what you actually do while you are away from them during the day—it should be a lot of fun to read. E-mail or send responses to Cathy Ralston at on_course@hotmail.com or to 68 S. Waterford Dr., Round Lake, IL 60073.

We've seen some movement on the job front recently, and would like to congratulate the following gentlemen on their new positions:

— **Tom Prichard** is the new golf course superintendent at Ivanhoe Club, replacing **Peter Leuzinger**, CGCS. Tom officially begins his new position on the 5th of this month.

— **Brad Legnaioli**, formerly of Oak Grove Golf Course, is now the golf course superintendent at the Highlands of Elgin—a new project that encompasses the old Spartan Meadows Golf Course. Brad replaces the recently-retired **Scott Klingberg**.

— **Paul Sandall**, formerly assistant superintendent at Park Ridge Country Club, is now the golf course superintendent at Oak Grove Golf Course, replacing Brad Legnaioli. Paul has been working for **Mike Mumper** for the past several years, so he should be more than ready to meet the new challenge (which includes hosting the September MAGCS meeting and annual championship).

Welcome to **Tom Gray**, CGCS, formerly of Fieldstone Golf Club and Franklin Hills Country Club in Michigan, who is the new golf course superintendent at Olympia Fields Country Club, replacing **Dave Ward**. Dave resigned from OFCC to take on the grow-in of the new Homewood/Flossmoor Park District course Coyote Run—a Greg Martin design on the grounds of the old Cherry Hills C.C.

While on the subject of Tom Gray and Dave Ward, the March 12th issue of *Golfweek's SuperNews* features a nice introduction to Tom in

its Career Track segment on page 27; and the March issue of *Golf Course Management* has an insightful interview with Dave on page 46. Check them both out.

Also new to our area are Doug Laak and Rick Jones, both of whom are with J.W. Turf's expanded John Deere Golf & Turf One Source Company in Hampshire, IL. Doug hails from Wisconsin, while Rick has been in our area for the past 20-plus years. Welcome!

And let's welcome **Phil Zeinert**, CGCS (Elgin C.C.) back from his "vacation" to the beautiful Lawrence, KS, where he took part in GCSAA's Chapter Leadership Workshop on March 23-24.

Congratulations to **Doug Davis** of Flagg Creek G.C., who married his sweetheart, Johnneen, on January 17 in Galena. Doug and Johnneen spent their honeymoon in San Diego, where they (like all of us who went to the conference) enjoyed superb weather in a really cool city.



Johnneen and Doug.

The past month or so has been a virtual whirlwind of educational opportunities for MAGCS members of all classes (and a big help to those of us struggling to comply with the PDI requirements). No fewer than three seminars offering a wide variety of topics were in the offing, which, if nothing else, kept the doors of the Midwest Golf House constantly swinging.

On February 25, Lesco and BASF sponsored a seminar focusing on recent research and best practices in disease and plant care. The keynote speaker was Dr. Houston Couch of Virginia Tech, and his presentation on

(continued on page 38)



Maybe they don't understand what it means to cut a green to the width of a quarter. But you certainly do. And no walk-behind greens mower does it better than our B Series Walk-Behinds. From adjustable handlebars to efficient grass catching, our B Series walks are without peers in their category. We also have large mufflers for lower sound levels. Bedknife-to-reel knobs allow for easy adjusting. And a forward mounting pivot point to minimize operator effect on the cutting plane. To see them in action on your greens, call your local John Deere Golf & Turf Distributor.

www.JohnDeere.com

JOHN DEERE GOLF & TURF
ONE SOURCE™



J.W. TURF INC.

14N937 US RT 20
HAMPSHIRE, IL 60140

847-683-4653

"Disease Control—Past, Present, and Future" was an enlightening and sometimes hysterical look at this topic, including observations on our forefathers' efforts at disease control "back before mercury killed people." Dr. Couch also honed in on the subject of fungicide resistance, with a viewpoint that did not quite coincide with that of a certain keynote speaker from an earlier seminar . . . Wouldn't it be fun to get Drs. Vargas and Couch together on the same stage with some of those inflatable boxing gloves?

The day's agenda also featured Mark Mahady of Mark M. Mahady & Associates, Inc., who delved into the sore subject of moss on putting greens, offering a few new twists on the control of this nasty pest. Following Mark was Dr. Richard Latin of Purdue University, who gave us some insight on weather-based spray schedules as opposed to calendar or threshold-based schedules—a program that is gaining greater acceptance as more research is proving it to be effective. Jeff Barnes of BASF's fungicide development department gave an interesting talk on the exhaustive and expensive process of bringing a fungicide to the market, noting that the experimental product wing at BASF is far-separated from the main plant so that "in case it blows up, we won't take everyone else out." **Dr. Randy Kane** finished with a presentation on his dollar spot-control research in the Chicago area. The day concluded with a Q&A session that brought all speakers back to the stage, but they had done such a complete job during their individual talks that no questions were posed (or perhaps everyone just wanted to beat traffic).



The lineup for the Lesco/BASF seminar: Dr. Houston Couch, Dr. Randy Kane, Jeff Barnes, Dr. Richard Latin, Mark Mahady and David Oberle.

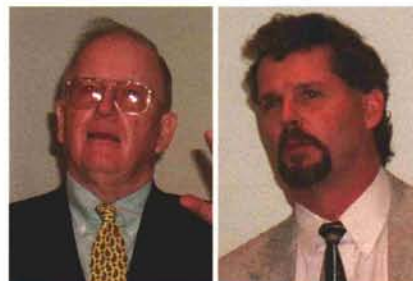


Your Class C Advisory Committee—front row, L to R: Doug Pool, chairman Chad Kempf, Nick Baker. Back row, L to R: Keith Krause, John Patrick Maksymiu, moderator John Ekstrom, Aaron Willing, Brian Mores, Matt Kregel and Scott White (represented by his empty chair).



The attentive audience.

The very next day, Golf House opened its doors for the first MAGCS Assistant Superintendents Winter Workshop, sponsored by Chicagoland Turf, J. W. Turf, TPEC, BTSI, Arthur Clesen, Inc. and Nadler Golf Car Sales. Although geared toward assistant superintendents, this full-day event had something for everyone. The morning session featured Jim McLoughlin, whose "Strategic Career Planning" seminar got things rolling for the 70-plus attendees. After Jim's talk and a really great lunch, the afternoon session got underway with **Kevin DeRoo** giving a talk on the inner workings of the MAGCS. Kevin tailored his talk for the



Jim McLoughlin and Kevin DeRoo.




Mike Bavier and Jon Jennings.



Todd Schmitz.

audience at hand, stressing the need for committee involvement from all classes of MAGCS members in order to achieve goals, and citing the success of the Class C Advisory Committee and this very event as proof that our system works to that end. Following Kevin was a panel discussion about the expectations shared among the superintendent and the assistant, featuring **Mike Bavier**, CGCS of Inverness Golf Club, **Jon Jennings**, CGCS of Chicago Golf Club and **Todd Schmitz** of Phillips Park Golf Course. After brief presentations by each gentleman, the floor opened to a Q&A session; moderator **John Ekstrom** (Cantigny G.C.) kept things lively for another two hours! It was like a CAGCS round-table discussion, only juiced up on steroids, with some very lively exchanges between panelists and audience members. Kudos and congratulations to the Class C Advisory Committee (**Chad Kempf**, **Nick Baker**, **Brian Mores**, **John Ekstrom**, **Aaron Willing**, **Matt Kregel**, **Doug Pool**, **Keith Krause**,

(continued on page 40)



SAND & SOLUTIONS
WAUPACA
www.waupacasand.com
715-258-8566

We just wanted to let you know that we are busy making topdressing sands and mixes for your spring needs.

Call us today for:
Topdressing Sands and Mixes
Greensmix and 7/2/1 Mix
Excellent Green Dyed Sand

Welcome to a Greener World.

PROSOURCE ONE

Premium supplier of:

- Fertilizers
- Herbicides
- Insecticides
- Fungicides
- Seed
- Adjuvants
- Plant Growth Regulators

Enter contact info below black line. (This line will not print.)

Scott Adams 630-740-1223

Scott Jacobs 847-275-3141

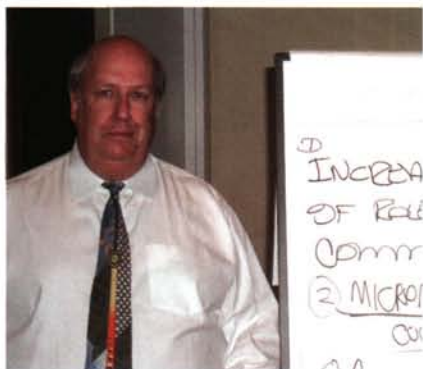
Al Van Alsbury 815-757-8731



PROSOURCE ONE

Growing Smarter.

John Maksymiu, Scott White and ex-member-but-still-remembered Erwin McKone), and many thanks to the day's sponsors for such a successful event.



Robert Sexton.

The MAGCS March monthly meeting took place on the 10th, and featured the GCSAA Superintendent Leadership Series seminar "Managing Up: Dealing With Managers, Boards, and Committees," presented by Robert F. Sexton, CCM, CHE (or was it Rick Majerus?) and sponsored by Callaway Golf and the Environmental Institute. This day-long (and 0.7 EP) seminar gave its attendees a variety of methods to improve their communication skills and thus "manage" their bosses—so to speak—and all this from the viewpoint of a club general manager. Mr. Sexton's presentation was very "hands-on" and entailed a great deal of audience participation, keeping things lively and audience members on their toes. Thanks to **Tim Anderson** and the Education Committee for arranging this important seminar.



Curt Franklin.

Finally, Curt Franklin bids the MAGCS a fond farewell: "Hello, everybody. I wanted to say goodbye

and thank you for the past four years. My tenure as a sales representative for Arthur Clesen Inc. has gone quickly, but the experiences and relationships that I have obtained over those years will last a lifetime. I wish everybody a prosperous and productive 2004 and many years to come. Good luck and God bless."

.....
New position available: agronomist intern. This individual will be trained in soil-testing and agronomic consulting for the turf and horticultural professions. Qualifications include: honesty, dependability, turf education and experience, outgoing personality; must be self-disciplined and a self-starter. This is a new position, and compensation will depend on the qualifications of the applicant. The ideal candidate will realize the joy of becoming self-employed as soon as their client base allows. Interested parties please contact **David Marquardt** of Dirt-n-Turf Consulting at 630-251-1511.

.....
Wanted to buy: Looking for a hydraulic dump assembly and box for a 1987 Cushman Truckster. Will take the whole Cushman if available with this feature. Call **Bob McCallum** at 847-625-9865.

For sale: two John Deere Sand Trap Rakes—1996 and 1998. One 2002 John Deere 3215B Fairway mower with 500 hours. One 2000 John Deere 2653 Triplex mower with 1,753 hours. One 1984 Toro aerifier model 09110. Call **Scott Speiden** at 630-773-1800, ext. 141, to make an offer.

.....
For sale: 3-point PTO Chipper—\$2,100. Giant Vac PTO Blower, like new—\$2,500. Mott 72 Flailmaster 3-point PTO—\$900. Call Mike Bavier or Brian at Inverness G.C. at 847-358-7030.


.....
For sale: 1995 John Deere 3215A Fairway Mower, 1,375 hours and in good condition, well-maintained. Call Tim or Scott at Golf Creations and make an offer—815-923-1868.

.....
Blah blah blah: Aurora Country Club still has Jacobsen LF 100s for sale—they start, they run, they mow and they have bulletproof cabs for those safety-challenged areas. Call and make an offer quick before we cannibalize. 630-892-3600 or 630-826-7874, ask for John or Nick.



Solutions
and
supplies
for your
turf
care needs.

Call. Get Answers. Relax.
Repeat as necessary.



Reinders

Bruce Schweiger
608-206-3500