

## WHAT THE ROUGH LOOKS LIKE TO LESSER UTILITY MOWERS.



The rough can indeed be rough on a trim mower, especially one that has a problem with balance. But the John Deere 2653A Utility Mower is a machine born of stability and simplicity. It features wide, low profile turf tires for excellent stability and superior performance in rugged conditions. For extra traction, a standard hydraulic weight transfer comes to the rescue. And the reel pump and cutting unit motor sizes have been increased for better cutting performance. The 2653A is also anything but

rough on the operator: an adjustable high-back seat, power steering, and 2-pedal traction drive make for a comfortable yet productive day on the course. To test drive the machine that makes mole hills out of mountains, visit your local John Deere distributor.

[www.JohnDeere.com](http://www.JohnDeere.com)

**J.W. Turf, Inc.**

14N937 US Rt 20  
Hampshire, IL 60140  
847-683-4653



JOHN DEERE

**NOTHING RUNS LIKE A DEERE®**



Don't forget—the MAGCS now offers e-mail updates and notifications to anyone interested in receiving them. To sign up for this free service, contact George Minnis, executive secretary, at [geo@magcs.org](mailto:geo@magcs.org).

.....  
Congratulations go out to **Steve** and (Mrs.) **Schendel** of Ruffled Feathers Golf Club on the birth of their son Jack on July 6.

.....  
With all talk around town in August being drought/heat-related, getting hold of people to find out what's new in their neck of the woods is difficult at best. Heck, even attendance at our many golf leagues has taken a hit from Mother Nature's cruel ways this summer. With this in mind, I've asked those who would actually take the time to talk about their summertime woes to contribute their "Top 12 Indicators That It Has NOT Been a Good Summer" experiences . . . (see list at right) One feels so much better after a good rant . . .



*Hearing the shouts from the gallery of "Down in front!", a surly Tony the Tiger lets them know what he thinks of them at the Keebler-Kellogg Classic, held this summer at Stonebridge Country Club (Dan Sterr host). Ernie Keebler (L), fearing for his life, remained quiet.*

## Top 12 Indicators That It Has NOT Been a Good Summer

- 12) Your 100-foot hoses have 74 Band-It repairs on them.
  - 11) You have puddles within 10 feet of localized dry spots.
  - 10) Your rain gauge has spider webs in it.
  - 9) Your kids go to their grandmother's for two weeks, and you neither
    - a) notice they're gone since you've not seen them anyhow, nor
    - b) take advantage of their absence with your significant other (if you get my drift).
  - 8) Your wife asks who you are when you finally come home for the day.
  - 7) Your golf course is doing the "apocalyptic be-bop," whereby trees just fall over for no reason, bugs you've never seen before are swarming everywhere, the plants you usually count on to remain green in a drought (clover, thistle and even knotweed) wilt, and the lovely colors of autumn—the yellows, the browns, the halloween oranges and chimney reds—are everywhere they shouldn't be (like in your turf).
  - 6) You are gone so often your wife suspects you are having an affair. With your assistant. Who is male.
  - 5) A much-needed half-inch of rain forces you to rope off your overwatered fairways.
  - 4) You've changed the oil in your spray rig nine times.
  - 3) Your buddies are planning a fall hunting trip, and all you can think of is how nice it'll be to kill something besides grass.
  - 2) When you arrive at work on August 4, there is a "Dear John" letter on your office door saying, "I'm leaving you." It's from your *Poa annua*.
- And finally,
- 1) Even a simple task such as entering your pump house (to look at your once-again empty acid tank or to hose down your red-hot pumps) becomes an ordeal when you drop the key and it conveniently falls through the one-inch crack in the soil you've been meaning to water and disappears into the earth's bowels and is found a week later in a rice paddy in freaking China.

**Martin Design Partnership, Ltd.**  
*Golf Course Architecture*  
630.482.2532 [www.mdpltd.com](http://www.mdpltd.com)

*River Forest Country Club*



## A Meritorious Day

*Cathy Miles Ralston*

Monday, July 29 dawned a bit gloomy. Indeed, the sky was spitting drizzle while Pat Jones of *Golfdom* spoke to a rapt audience of MAGCS members at the Merit Club, but by the time those in attendance had polished off their box lunches, the clouds were breaking up and a glorious, sunny afternoon of golf began. (If you missed Pat Jones, ask someone who did hear him speak about Arnold Palmer's dry-cleaning bill.)

The MAGCS thanks host **Oscar Miles**, CGCS and his team, including assistants **John Nelson** and **Enrique Valadez**, who had the course in absolutely stellar condition,

as well as the Merit Club staff, especially general manager Don Pieper, who were welcoming, attentive and helpful. We also thank our sponsors for the day—Manhard Consulting, ProSource One, High PSI Ltd., Turf Professionals Equipment Co., Nels J. Johnson Tree Experts, Palatine Oil, Lohmann Golf Design, Central Sod Farms, Illinois Lawn Equipment, Arthur Clesen Inc., and Waupaca Sand & Solutions—as well as Nadler Golf Car Sales, Inc. for providing the carts. Hats off, too, to Patti Thorson and Nancy Quinlan of Illinois Lawn, who played photographer and worked the betting hole. Speaking of which, no. 11—a par 3 playing either 155 or 167 yards—was the designated betting hole; each golfer had the opportunity to buy raffle tickets

and double them by hitting the green. Proceeds of \$680 went to the MAGCS Scholarship Fund.

In the quest for the Elmer Bertucci Cup, **Randy Wahler** prevailed. In the Super Senior division, gross, **Carl Hoppman** took first, Oscar Miles second and **Ken Goodman** third. In Super Senior, net, **Walter Fuchs** finished first, **Jim Meyer** second and **John Stephenson** third. In the Senior division, gross, Randy Wahler was first, **Bob Kronn** second and **Ed Fischer** third; on the net side, **Brad Johnson** finished first, **John Lebedevs** second and **Jim Knulty** third. Regular gross and net honors went, respectively, to **Al Pondel** and **Steve Van Acker**.



*Oscar Miles accepts a framed July On Course cover from Mike Mumper.*



*And the Elmer Bertucci Cup goes to . . . Randy Wahler!*



*John Paul Kiraly, Pete Kiraly and John Nelson.*



*Dave Gelino, Don Ferreri, Tim Keating and James Biegon.*



*Ken Goodman, Pat McDonagh, Steve Van Acker and Paul Schaefer.*



*Russ Stratton, Rick Reed, Dave Grolle and Tom Prichard.*



*Ray Ferrari, Dave Oberle, Steve Jump and Chris Smith.*



*Roger Johnson, Jim Carroll, John Maguire and Bud Edman.*



*Paul Bastron, Todd Schmitz, Dan Anderson and Mark Petitgoue.*

*(continued on page 34)*





4-for-4 hitting the green on no. 11 were Pete Leuzinger, John Lebedevs, Walter Fuchs and Carl Hoppman.



Oscar Miles, Pat Jones, Gary Hearn and Tim Miles.



Also 4-for-4: Jim Knulty, Bob Kronn, Al Pondel and Brad Johnson.



Mike Mumper, Dave Radaj, Dave Blomquist and Dan Marco.



Would you believe, 3-for-3: Randy Wahler, Ed Fischer and Dave Schlagetter.



Photographer Nancy Quinlan (R) and betting-hole arbiter Patti Thorson of Illinois Lawn.



Luke Cella, John Stephenson, John Turner and Jim Keith.



Trying hard to be casual, Don Cross, Al Fierst, Rick Bowden and Curt Franklin.



Bill Fenn, Tony Kalina, Scott Witte and Matt Springer.



Oscar's second assistant Enrique Valadez (second from left) and interns Zach Anderson, Jeremy Stull and Scott Verdun (pictured with caddie Curtis Herchenbach).

Jim Shone  
Syngenta Professional Products

**syngenta**

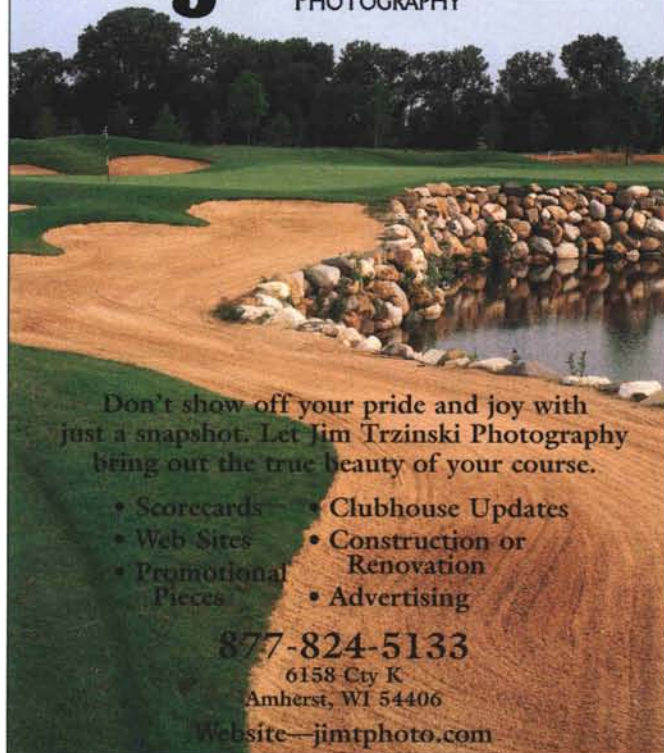
1715 Cambridge Dr.  
St. Charles, IL 60174  
Tel. 708-217-8509  
Fax 630-513-6777  
Mobile 708-217-8509  
www.syngenta.com

jim.shone@syngenta.com



# JIM TRZINSKI

GOLF COURSE  
PHOTOGRAPHY



Don't show off your pride and joy with just a snapshot. Let Jim Trzinski Photography bring out the true beauty of your course.

- Scorecards • Clubhouse Updates
- Web Sites • Construction or Renovation
- Promotional Pieces • Advertising

877-824-5133

6158 Cty K

Amherst, WI 54406

Website—jimtpphoto.com



## MIDWEST GROUNDCOVERS

*Groundcovers and More:*

- Broadleaf Euonymus • Deciduous Shrubs • Vines
- Perennials • Hardy Landscape Roses • Evergreen Shrubs
- Ornamental Grasses • Native Prairie Plants • Groundcovers

P.O. Box 748 • ST. CHARLES, IL 60174

847-742-1790 • FAX 847-742-2655

Visit Us At: [www.midwestgroundcovers.com](http://www.midwestgroundcovers.com)

Nurseries Located on Route 25 North of St. Charles

*The Groundcover Specialists*

PROPAGATORS AND GROWERS OF GROUNDCOVERS,  
PERENNIALS, SHRUBS, EVERGREENS AND NATIVES

## Migratory Bird Management

Have Dogs Will Travel



Border Collies

## GOOSE CONTROL

Harold Frederickson

If we don't answer our phone

*we're on another wild goose chase*

708-361-6772



Growers of Quality Sod

## SERVICE!

LOCAL GROWING FOR  
EASY PICKUP OR QUICK DELIVERY.  
DELIVERY ON TIME, EVERYTIME.

## QUALITY!

FEATURING  
ELITE KENTUCKY BLUEGRASS,  
BENTGRASS SOD, AND  
TURF-TYPE FESCUE

- LOWER MAINTENANCE
- MORE DROUGHT & SHADE TOLERANT
- BETTER WEAR RESISTANCE

NEW  
PRODUCT

## PRICE!

CALL FOR A QUOTE

630-557-2900



MAIN STREET  
11 MILES WEST  
OF BATAVIA, IL



## Get to the Root of the Problem with BioGain® and Canteen.™



Promote healthy grass by maintaining healthy roots.

BioGain® WSP® and BioGain® WSP® (Fe) are a great first start for a root maintenance program. Both biostimulants come in convenient Water Soluble Packets; they enhance water and nutrient uptake, reducing stress and stimulating turf root growth. In addition, BioGain(Fe) contains a 10%

fully chelated iron for use with turf that displays an iron deficiency.

For added efficiency, use Canteen™ spreader and soil penetrant to deliver BioGain more completely into the crown and root zone. BioGain and Canteen—the natural way to healthy roots!



515-232-5907 • 800-232-5907 • Fax 515-232-5961 • www.bucolor.com



**ARTHUR CLESEN INC.**  
543 DIENS DRIVE • WHEELING, IL 60090 • 847-537-2177  
8050 WEST 186TH STREET • TINLEY PARK, IL 60477 • 708-444-2177  
www.aclesen.com

## TAKE CONTROL OF YOUR TURF !



Are grubbing skunks causing thousands of dollars worth of damage to your course?  
Are beavers having a field day with your freshly planted trees?

**On Target Animal Damage Control.**  
Specializes in the selective control of grubbing skunks and beaver removal. Our control methods have proven to be 100% effective in major golf courses in the Chicago area. Stop spending thousands of dollars on insecticides intended to control the grubs.

**ON TARGET A.D.C.**  
P.O. BOX 469 CORTLAND, IL 60112  
815-286-3039



### PROFESSIONAL TURF GRASS SEED

LEGEND Low Mow Blend  
(100% Elite Ky Bluegrasses)

LEGEND Fine Fescue Blend  
(100% Fine Fescues)

LEGEND Super Pro II  
(70% Elite Ky Blues / 30% Fine Fescues)

LEGEND Super Pro III  
(100% Elite Ky Bluegrasses)

### FERTILIZERS

Milorganite  
White Gold 0-0-24  
18-8-18 50% SCU  
25-5-15 50% SCU  
Harmony Fertilizers  
ROOTS Turf Food

27310 W Case Rd  
Wauconda, IL  
800.300.4887

6730 South Street  
Tinley Park, IL  
708.532.4723

4304 S Beaumont Ave  
Kansasville, WI  
262.878.2048



## Washed Sod That Fits Your Course To A Tee!

- PENNCROSS™ BENT SOD
- PENNEAGLE™ BENT SOD
- PENNLINKS™ BENT SOD
- XL-100 BLEND SOD™

Available as H & E Hydro-cut™ Washed Sod or traditionally cut sod with soil.

"Single Source Convenience"



GENERAL OFFICES:  
3900 West 167th Street  
Markham, IL 60426  
Fax: 708-596-2481  
Phone: 708-596-7200



## THE VOICE OF EXPERIENCE

Bob Williams *Retired*

# Communication Is Key

One of the most important prerequisites for a golf course superintendent to carry out his or her evermore demanding responsibilities within our profession is the factor of communication. The following list gives some reminders to help us address and improve our communication skills.

1. Use the other person's name in every conversation.
2. Communicate frequently and positively.
3. Be objective, not subjective.
4. Never use inflammatory words.
5. Be specific.
6. Use proper grammar and perfect spelling.
7. Never argue.
8. Maintain confidentiality.
9. Listen.
10. Set a course of action.
11. Use appropriate humor.
12. Develop a plan for giving specific instructions.
13. Encourage input from subordinates.
14. Attend educational classes for public speaking such as Dale Carnegie or Toastmasters.



When You  
Want it  
Green...



- Irrigation Well Siting Studies
- Well Rehabilitation Evaluations
- Aquifer Testing & Analysis
- Ground Water Modeling
- Well and Wellfield Design
- Water Quality Studies

Aquifer Science & Technology  
Your Ground Water Resource  
A division of Ruekert/Mielke, Inc.

16335 S. Harlem Ave.  
Tinley Park, Illinois 60477  
708-444-7360

[www.ruekert-mielke.com](http://www.ruekert-mielke.com)

## PRECISION BLENDED TOP DRESSING

Custom blended to your specifications  
by our modern equipment.

*Buy when you need —  
Eliminate costly storage*

We sell an air-dried, uniform and  
free flowing top dressing.

*ASK THE MAN WHO HAS USED IT.*

## HENRY FRENZER

Area Code 847  
658-5303

620 Webster St.  
Algonquin, IL  
60102



## Get rid of those #% **GEESE TODAY!**

### STATIC DISPLAYS DON'T WORK.

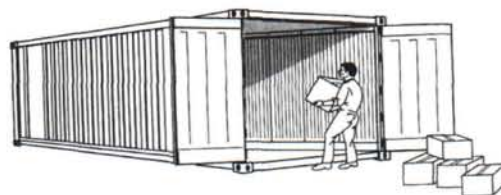
Dogs are expensive. Instead use safe, harmless noisemakers to **INVADE** the pest's territory with irregular movement and intimidating sounds.



**JPF DISTRIBUTORS**  
**800-582-8843**

## INSTANT STORAGE SPACE

RENT When you need it, Where you want it SALE



- Available in 20' to 48' Sizes
- Ground Level Access
- Highly Secure, Wind and Water Tight
- Heavy Duty Steel or Aluminum Construction
- Painted Neutral Colors to Blend In with Surroundings

**GREAT LAKES**  
**KWIK**  
**SPACE**

*Service Throughout  
Chicagoland*

Excellent For:

- Specialized Lawnmowers
- Maintenance Supplies
- Fertilizer
- Pesticides
- Record Storage

**(800) 966-1016**

[www.storagecontainers.com](http://www.storagecontainers.com)  
[www.storagecontainers.com](http://www.storagecontainers.com)

**COMPLETE LIGHTNING PROTECTION SERVICE**

**UL LISTED INSTALLER AND MANUFACTURER**

**SHELTER PROTECTION**

**TREE PROTECTION**

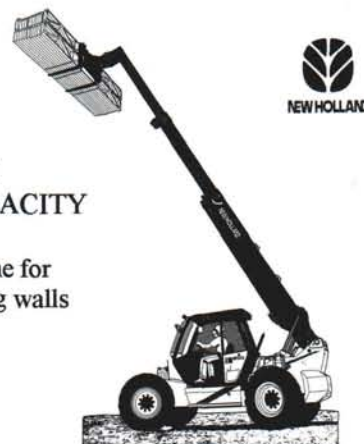
**VISIT OUR INTERNET SITE  
OR CALL TODAY FOR  
MORE INFORMATION**

**HLP**  
**SYSTEMS, INC.**

A Subsidiary of Harger Lightning Protection, Inc.

426 North Avenue  
Libertyville, IL 60048  
847.362.0777 • fax 847.362.6443  
[www.hlpystems.com](http://www.hlpystems.com)

## NEW IN RENTAL!



**29 FOOT LIFT  
6,000 LB. CAPACITY**

**Excellent machine for  
building retaining walls**

**MARTIN**  
**IMPLEMENT**

16400 S. 104<sup>th</sup> Avenue  
Orland Park, IL 60467  
**(708) 349-8430**



# Andrew's Bridge



*September 11, 2001 started out like any other early fall day. Greens had been mowed, cups were changed and a beautiful day had begun. I keep a small TV on in the shop to watch the weather and to check up on the Cubs score. What I saw on the news that morning will be forever etched in my mind. Reports came on that a plane had crashed into the World Trade Center. I turned just in time to see a second plane do the same. The shock was immense. Like many people, I could not look away from the scene. I let some members know of the news. Many would not believe me. They would soon find out the story was true. As it turned out, so many people's lives would be changed forever.*

Andrew Marshall King was killed on 9/11/01. He was an executive with Cantor Fitzgerald with an office on the 104th floor of the North Tower of the WTC. He was not only a good father and good friend, but he was also a good golfer. Andrew played all over the world. He always loved to come back and play his "boyhood" course, the Geneva Golf Club. The last time I saw Andrew, he was chasing down a ball in the creek area on the first hole. He had the biggest smile on his face as he yelled out, "Hey Eddie!" I miss that smile.

As a tribute, Andrew's dad Wes King and brother Spencer King decided to build a bridge on the course in Andrew's honor. Wes, an accomplished architect, came up with a design similar to the old Swilkin

Bridge at St. Andrews in Scotland. The grounds and greens committee met with Wes and Spencer and decided to put the bridge on the ninth hole. What a great spot it turned out to be! Arkansas fieldstone was the choice for the bridge. Close to 20 tons were used to build the bridge. Greg Stephens from Clare, IL was the choice to "create" this beautiful tribute. We caught a break in the early spring and were able to complete the bridge in about a month. Wes was on the site almost every day to make sure his special tribute was done right. It was!

On May 18, the bridge was dedicated. Family, friends and club members all met in the clubhouse. A duo of a bagpiper and a drummer,

adorned in all of their Scottish attire, led the group to the bridge. Many family members had followed suit with the Scottish garb. It was one of those unseasonably cool days, but the warmth of love and memories made it feel like the middle of August. It was my pleasure to help make the bridge happen. The plaque on the bridge reads:

*The Andrew Marshall King Bridge  
Dedicated To Those Lost,  
Sept. 11, 2001  
The King Family & Friends –  
he loved this course . . .*

Come out some time and walk across Andrew's bridge and say hello to Andrew as you pass over a fine tribute to a unique man.





# Thoughts on September 11th: One Year Later

*It rained this weekend. I had a little time, so I'll share some of my thoughts about people we should remember.*

*The great thing about September 11th was the forging of the American spirit. The tragedy is the corruption of that spirit. It has been a full year since this event occurred. I have begun to see the feathers fall off as the eagle soars. Complacency again begins to weave its web around us. We cannot let that happen! Too many have died already!*

It was a warm morning in Wisconsin. The construction crew was working on the fifth tee when Chris Rule's cell phone rang—something that happens quite frequently when dozers are cranking in the fall, seed needs to hit the ground and Jack Nicklaus is your boss. I saw Chris sharply snap his phone shut as he quickly walked over to me.

"A plane just hit the World Trade Center. My brother just heard about it. They aren't sure what happened, but the press thinks it might be a terrorist."

I looked at Chris in a kind of disbelief and mumbled something like, "They'll figure it out sooner or later, let's get this tee leveled out before they screw it up."

Chris kind of agreed, copped a smoke from one of the laborers and checked the transit. A few minutes later, his phone rang. I was painting the measurements while we were shooting grades. I looked over at Chris, a little annoyed by another interruption, but he looked quite concerned as he snapped his phone shut again.

"Another plane hit the other tower," he said quite grimly.

"What!"

"They really think terrorists are behind this now."

"What are you talking about?" I said, feeling confused and vaguely troubled.

"Another plane full of people flew into the other tower of the World Trade Center. Both towers are on fire and hundreds, maybe thousands, of people have died already."

I kind of hung my head and kicked a stone around. "Well, I try and pray every day. I think these people and their families will sure need all the support they can get."

We were both a little quiet for a while. I remember looking over the beautiful bluff beside the fifth tee, then we went back to work.

A few moments later, Chris' phone rang again. I watched him close his phone slowly this time as he timidly walked over to me.

"Another plane just hit the Pentagon."

"Oh my God!" I said. "Whatever happens next, we need some strong leadership to keep everyone from pushing buttons too soon."

"Who's behind all this?" I asked.

"No one knows as of yet, but it sure looks like some terrorist organization."