

Migratory Bird Management
Have Dogs Will Travel



Border Collies

GOOSE CONTROL

Harold Frederickson

If we don't answer our phone

we're on another wild goose chase

708-361-6772



**Fast, long-lasting relief of Localized
Dry Spot**

**Convenient and flexible formulation
that allows preventative or curative
control**

Easy to apply and saves time

Safe to use any time of the year



27310 W CASE RD
WAUCONDA, IL
(848)526-0007

6730 SOUTH STREET
TINLEY PARK, IL
(708)532-4723



Agriculture Division

John Turner
Field Sales Representative

Garden & Professional Care

Bayer Corporation
40 W 665 Campton Woods Drive
Elburn, IL 60119
Phone: 630 443-7807
Fax: 630 443-7839
Voicemail: 888 242-4200
Extension: 3101
john.turner.b@bayer.com

Jim Shone
Territory Sales Lead

Zeneca Professional Products
1715 Cambridge Drive
St. Charles, IL 60174

Mobile/Pager (708) 217-8509
Fax (630) 513-6777
E-mail jim.shone@AGNA.Zeneca.com
Voice Mail (888) 875-9990 X9600

ZENECA



*"Golf Course Work
a Specialty"*

LEMONT PAVING CO.

EST. 1957

MURPHY'S

11550 Archer Ave., Lemont, IL 60439
(630) 257-6701 • FAX 630-257-5194



D.B.A. Bill Boyd



Timberline

**Golf Course Remodeling
and Renovation**


Let Timberline bring your next project into the
next millenium as a turnkey operation

1907 Darien Club Drive, Darien, Illinois 60561
(630) 963-9088, pgr (630) 850-0159, voice (630) 732-9088

Most inland golf courses, however, do have some component of trees as part of the natural landscape. This is where a balance needs to be struck between highly maintained turfgrass (greens and tees) and the trees. Also pay attention to trees in high-traffic areas or other problem areas such as poorly drained sites. As a general rule of thumb, turfgrasses require eight hours of direct sunlight per day to maintain good performance. Of particular importance is morning sunlight. Photosynthetic activity is usually greatest in the morning, resulting in the energy fixation necessary for growth and recovery. Do not, therefore, plant trees to the east or south of greens and tees. A little foresight can safeguard the long-term health and performance of these critical areas of the golf course.

Removing problem trees can be a very controversial issue at golf courses, and the reasons cited are too numerous to elucidate. The bottom line is that we are talking about a golf course, not an arboretum, and there is no substitute for sunlight. Limited sunlight will affect turf quality, turf reliability and playing quality. Compass readings and time-lapse photography can help determine trees that are candidates for removal. In recent years, computer software has been developed to analyze shading from trees. This technique can graphically illustrate the amount of shade cast by individual trees throughout the year with amazing accuracy. Computer analysis removes the guesswork from tree removal and replaces it with data, and sometimes emotional controversy can be replaced with science. Digital imaging can also be a valuable tool to show

people what the hole will look like following tree removal.

Trees will always be a difficult issue at golf courses across the country. Golfers will have to be continuously reminded and educated about the negative consequences that can occur as a result of poorly located trees. Sometimes, a simple tour around the course with a comparison of shaded turf and turf exposed to full sunlight is all that is needed. Oftentimes, however, more convincing will be necessary. Be sure to contact your regional Green Section office to obtain assistance with this difficult issue and perhaps schedule a TAS visit. To have consistent top-quality turfgrass, it has to see the light. 

On Course With the President (continued from page 2)


thought, how amazing is this! I was pleased that I did find a common denominator between Bob and myself, in that I wake up every day and find it enjoyable to go to my job. He said he never considered it going to **work**, and I must agree with him. Through the ages, this mindset is part of our motivation to do what we do.

However, the engine to our motivation remains to be identified. I think I found it; in fact, I know I found it. In deciding on a topic for my last message, I did some soul-searching and I realized what makes me tick. It has a lot to do with doing a good job. But it has everything to do with *being appreciated* for doing a good job. Everyone needs to feel appreciated. A wife likes flowers because they are pretty, but beyond that, because she feels they signify the value of all she accomplishes and

appreciation for same. Bonus checks are wonderful, but the sense of appreciation for a job well done that they represent is going to last longer. Appreciation is the motivation for doing that extra task, helping out with something that would be easier to walk away from. If you think about it from that perspective, when you do not feel appreciated you generally have no desire to do any more than what you are required to do. And being happy is not a requirement.

The very wise proverb of treating those around you the way you would want them to treat you, should be the golden rule. How enjoyable life would be to rid the world of hate, divorce, child abuse, etc. That is very wishful thinking, but I think everything could revolve around making appreciation a priority. I

feel comfortable with the self-awareness that I am greatly motivated by a sense of appreciation. That being said, I am going to assume I am no different than anyone else. I am going to step up my efforts to appreciate all of those relationships around me, wife, children, grounds crew, even my bosses. Who knows, this may be the missing piece that will keep all those relationships intact.

Let us all try to nurture what we have, as well as those we have influence on. I believe there is plenty of appreciation to go around. And yes, I appreciate all of you for giving me the opportunity to lead this magnificent organization. It has been fun and I encourage all of you who have not yet served to consider it for your future. God bless. 



Lester's Material Service, Inc.

James Lukenbill
Construction Manager



Landscape Supplies Since 1960
1980 S. Highway 83 P.O. Box 439 Grayslake, IL 60030-0439
847-223-7000 fax 847-223-7067 www.lestersmaterial.com

Terra Care Products, Inc.
Terra Topper, Terra Broom,
Terra Pick up Sweeper
Terra Aerator

T.I.P., INC.
Greens Spiker/Seeder
Amazone/Groundskeeper
Amazone/Combo Seeder

JOHNSON AND ASSOCIATES

of Lombard, Inc.
ROGER O. JOHNSON
630-620-8198 - FAX 630-620-8119
Mobile 630-215-3325 E-Mail: rojassoc@aol.com

109 E. Washington Blvd.
Lombard, IL 60148-2637

Member
MAGCS ITF
NWIGCSA CIGCSA

Golf Course Chemical Storage Buildings

Carlisle Building Systems, Inc.
Prefabricated Relocatable Steel Buildings

Featuring:

- Secondary spill containment which exceeds OSHA Codes. UL, FM approved.
- Heavy-duty locking mechanism for added security
- Forklift pockets for ease of relocation
- Constructed of 10 gauge steel to provide structural strength
- Optional ventilation, lighting, temperature control, Fire Suppression Systems
- No Building Permits required

Other Products

- Secondary Containment Pallets and Sumps
- Rinsate Collection Pads

Contact: Larry Sievertsen - (847)426-0164 FAX (847)426-0070
Fluid State Systems, Inc.
35W753 Parsons Rd., W. Dundee, IL. 60118



www.turfteam.com

Golf & Turf
Equipment Sales

KOELPER BROS.

Golf Course Building and Remodeling
444 E. Mors Avenue
Wheeling, Illinois 60090
FAX 847-541-4619

847-438-7881 847-541-9182
DANIEL I. KOELPER VICTOR C. KOELPER



- Precision Tank Tightness Testing
- Upgrades for Tanks & Leak Detection Systems
- Install Underground & Aboveground Fuel Tanks
- Removal of Tanks

Your Complete, Professional Tank Experts

Please contact us at:
1-800-773-Tank or 630-375-6121

**SUPPORT
YOUR
ADVERTISERS.**

**THEY
SUPPORT
YOU.**



Master of the Links®

Burdett's, Inc.

INNOVATIVE MAINTENANCE PRODUCTS

P.O. Box 2458
Glen Ellyn, IL 60138-2458

Toll Free (888) TURF-888

Local (630) 545-2474
Fax (630) 545-2782

NEW IN RENTAL!



New Holland excavators with up to 29 foot reach and 19 foot digging depth



16400 S. 104th Avenue
Orland Park, IL 60467
(708) 349-8430

TAKE CONTROL OF YOUR TURF !



Are grubbing skunks causing thousands of dollars worth of damage to your course?
Are beavers having a field day with your freshly planted trees?

On Target Animal Damage Control. Specializes in the selective control of grubbing skunks and beaver removal. Our control methods have proven to be 100% effective in major golf courses in the Chicago area. Stop spending thousands of dollars on insecticides intended to control the grubs.

ON TARGET A.D.C.
P.O. BOX 469 CORTLAND, IL 60112
815-286-3039

Quality Energy Products Since 1928



Diesel Fuels	Greases
Gasolines	Engine Oils
Pumps	Hydraulic Oils
Heating Oils	Gear Oils
Auto Trans Fluid	Tank Installation



27310 W CASE RD
WAUCONDA, IL
(848)526-0007

6730 SOUTH STREET
TINLEY PARK, IL
(708)532-4723

Tournament Golf Course Accessories



Featuring Quality Custom Embroidered Flags, Poles, Cups, Bunker Rakes, Ball Washers & More.

LESCO is the exclusive distributor for



Contact your LESCO Professional Golf Representative or call (800) 321-5325.

LESCO®

LESCO is a registered trademark of LESCO, Inc.
Tournament is a trademark of LESCO, Inc.
Southern is a trademark of Southern Golf Products, Inc.

NATURAL 12-2-8 (4S)

GREENS GRADE SLOW RELEASE FERTILIZER

8% Water Insoluble Nitrogen,
Bone Meal, Sulfate of Potash
SGN 100 Homogeneous Particles
No Odor



800-825-7650 fertilizers.net



GREG OLTMAN
President

HORTICULTURAL ENTERPRISES, INC.

Office 847-669-8658
Fax 847-669-8662

14440 MARENGO ROAD
UNION, ILLINOIS 60180



Gregory E. Martin
President

65 North River Lane
Suite 201
Geneva, Illinois 60134
Phone: 630-232-9977
Fax: 630-232-9971
E-Mail: mdpltd@aol.com

RIVERWALLS LTD.

P.O. Box 562, Barrington, Illinois 60011

GOLF COURSE ENHANCEMENT

**Shoreline Stabilization, Creek Crossings
Stream and Spillway Re-Construction**

DARRYL SCOTT BURKETT
C.E.O.

1-888-254-4155
OFFICE: 847-382-9696
FAX: 847-516-0116
MOBILE: 847-338-9720

E-mail: riverwallsltd@aol.com

**PEERLESS
FENCE**

Div of Peerless Ent. Inc.
THE FENCE PEOPLE • SINCE 1949



Member American
Fence Association

3N381 Powis Rd.
West Chicago, IL. 60185
(630) 584-7710
IL (800) 543-6511
FAX (630) 584-7746

John M. Seger CFP
Senior Sales Manager
Certified Fence Professional

GolfVisions

Golf Course Contractors  Golf Course Managers

Timothy J. Miles, Sr.
President

3000 Dundee Road, Suite 302
Northbrook, IL 60062
www.GolfVisionsLLC.com

Phone: (847) 412-9991
Fax: (847) 412-9996
Mobile: (847) 778-8440



**KOELPER
GOLF COURSE
CONSTRUCTION
COMPANY**

DARRELL KOELPER
PRESIDENT

**GOLF COURSE
CONSTRUCTION & REMODELING**

MARENGO, IL

OFFICE: 815-568-8382
FAX: 815-568-1048
HOME: 815-568-6603



360 Schaumburg Rd.
Streamwood, IL 60107

(630) 830-7405
FAX (630) 830-9652

**CLAUSS
BROTHERS, Inc.**
GOLF COURSE
CONSTRUCTION AND RENOVATION
LARGE TREE MOVING

the Bull Sheet

John Gurke, CGCS, Contributing Editor

DATES TO REMEMBER

November 9 — MAGCS 48th Midwest Turf Clinic and Annual Meeting at Medinah Country Club, **Dan Quast**, CGCS host.

November 28-30 — North Central Turfgrass Exposition at Pheasant Run Resort, St. Charles, IL.

November 29 — Second Annual U of I Alumni Breakfast at NCTE.

December 9 — MAGCS Holiday Dinner Dance at Bartlett Hills Golf Course, **Kevin** and **Cheryl DeRoo**, hosts.

December 11 — Annual West Side Holiday Party at Dave & Buster's, noon to 3 p.m. This also marks the date on which all grubs that have refused to die thus far WILL actually die. Sleep easy.

January 17-18, 2001 — GCSAA's "Managing On The Job Behavior" seminar (1.4 CEUs) in Oak Brook, IL.

January 17-19, 2001 — Mid-America Horticultural Trade Show at Navy Pier, Chicago, IL.

February 14-15, 2001 — MAGCS Hospitality Suite at Adam's Mark Hotel, 6 to 10 p.m. in Dallas, Texas during the GCSAA International Conference and Show.

December 24, 2001 — The 75th anniversary of this very association, the MAGCS. Info to follow.

September, 2003 — MAGCS monthly meeting and golf championship at Shoreacres, **Tim Davis** VOLUNTEER host.

The September MAGCS golf championship was held at Stonewall Orchard Golf Club with **Larry Flament** serving as our host. The course played very tough into the teeth of a blustery wind, and those who came out on top certainly deserved to. Thanks to Larry and the staff at Stonewall Orchard for a great day.



Kevin DeRoo presents Larry Flament with the treasured framed cover of On Course magazine featuring Stonewall Orchard Golf Club.



The winners of the gross division are (L to R) championship flight winner **Bob Kronn** of LaGrange C.C. (seated in the travelling winner's throne), commercial flight winner **David Mayzel** of Eagle One Golf Products, first flight winner **Kerry Blatteau**, CGCS of Oak Brook Hills G.C., second flight winner **Steve Van Acker**, CGCS of Crystal Lake C.C. and third flight winner **Todd Schmitz** of Aurora C.C.



Net division winners are (L to R) commercial flight winner **Dave Holler** of Arthur Clesen, Inc., third flight winner **Tom Morgensen** of Lake County Forest Preserve, second flight winner **Don Ferreri** of Seven Bridges G.C. and first flight winner **Dave Arden** of Willowhill G.C. Congratulations to all of our MAGCS 2000 champions!

As mentioned above, December 24 of next year marks the 75th year of the MAGCS's existence (albeit under various other monikers throughout that time). We are asking for your help in locating any historical documents, photographs, articles, etc. that would be of interest to our membership in learning about the history of this Association. Anyone with knowledge or in possession of ANYTHING of this nature, please give John Gurke or Cathy Ralston a call. Remember, nothing is insignificant! Thank you.

(continued on page 28)

How

to make the perfect core

900,000 times an hour.



Whoever said consistency is boring never aerated a green. With the John Deere line of Aercore® Aerators, we've taken aeration to a new level of quality and quantity.

A lot of the credit has to go to our unique "Flexi-Link" design. The Flexi-Link is attached to the rear of the tine leg and absorbs the forward motion of the aerator, allowing the tines to stay perpendicular while they are in the ground. As the tines come out of the ground, the Flexi-Link pushes the tine leg forward into position for the next downward stroke.



The result is a very consistent, round hole with minimum tearing on the hole top. This is accomplished by the speed at which the tine rams operate and the Flexi-Link design.



Whether it's the tractor-mounted 1500 and 1000, or the walk-behind 800, a John Deere Aercore Aerator will have you coring like never before. For more information, call us toll-free at 1-800-537-8233. www.deere.com



**J.W. TURF, INC.
14N937 US Rt 20.
Hampshire, IL 60140**

847-683-4653 Or 877-746-0614

Official
Golf Course
Equipment
Supplier



Nothing Runs Like a Deere®



Congratulations to our very own editor of this very magazine—Cathy Miles Ralston—on the birth of her and husband Phil's baby girl. Kristin Cecilia Ralston entered this world at 3:16 p.m. on September 8, weighing 7 pounds, 9 ounces. Mom, dad and older brother Ryan are all doing wonderfully, and Cathy was hard at work on this issue within 10 minutes of delivery.

On August 28, Bud Fide, a long-time employee of the Chicago Park District (Waveland Golf Course), passed away. MAGCS sends out its condolences to the family and friends of Bud.

For everyone interested in the Interactive Turf program being started by Drs. Kane and Wilkinson of the University of Illinois, check out this Web site: <http://www.interactiveturf.com>. The good doctors gave a presentation on this soon-to-be-a-reality program back in January at the monthly meeting at Arrowhead G.C., and the site is now accessible if you want to learn more.

Applications are now being accepted for Penn State's two-year golf course turfgrass management program for the class beginning in September of 2001. There is an application fee of \$35 and the deadline for application is December 31, 2000. Applications can be obtained by calling 814-863-0129, by visiting their Web site at <http://www.agronomy.psu.edu/academic/tmbrotp.htm>, or by writing to: Golf Course Turfgrass Management Program, The Pennsylvania State University, 456 Ag. Sciences and Industries Building, University Park, PA 16802-3507.

GCSAA has announced its slate of candidates for the elections in Dallas in February 2001: For president, **Tommy D. Witt**, CGCS of StillWaters Resort in Dadeville, Alabama (and formerly one of our own); for vice president, Michael Wallace, CGCS of Hop Meadow C.C. in Simsbury, Connecticut; for secretary/treasurer, Jon D. Maddern, CGCS of Elk Ridge G.C. in Atlanta, Michigan and Mark J. Woodward, CGCS of Dobson Ranch/ Riverview G.C.s in Mesa, Arizona; and for directors, Ricky D. Heine, CGCS of G.C. at Star Ranch in Hutto, Texas; Sean A. Hoolehan, CGCS (also former local boy) of Wildhorse Resort in Pendleton, Oregon; **Robert J. Maibusch**, CGCS of Hinsdale C.C. right here in our neck of the woods; and Timothy T. O'Neill, CGCS at C.C. of Darien, Connecticut. Three officers and three directors will be elected from this field of eight candidates. Best of luck to MAGCS's very own Bob Maibusch! (And the other guys, too . . .)

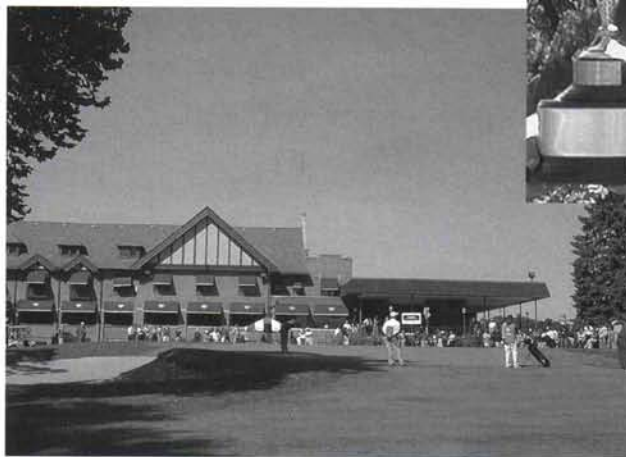
The September/October issue of *Chicago District Golfer* featured several of our esteemed MAGCS members in an article titled, "Superintendents in the New Millennium." **Oscar Miles**, CGCS of Merit Club, **Dave Schlagetter**, CGCS of Indian Hill Club, **Brian Bossert**, CGCS of Bryn Mawr C.C., **Kerry Satterwhite**, CGCS of the City of Bloomington and **Tony Kalina** of Prairie Landing G.C. were all quoted (some even photographed!) in this very well-done piece. The same issue featured Geneva Golf Club's 100th anniversary, and included a nice shot of **Ed Braunsky**, CGCS and **Albie Staudt**. Congratulations, everyone, on getting the word out.

This just in: Becker Underwood, Inc., which manufactures and markets a number of specialty colorants and bio-agronomic products for the turf industry, has purchased the UK-based MicroBio Group, Ltd.

Congratulations to **Les Rutan** and his staff for once again showcasing Beverly C.C. in the Chicago Open in September. The course was spectacular, guys. Local hero and Northwestern University amateur Luke Donald ran away with the trophy only days after making a fine showing in the U.S. Amateur Open.



Champion Luke Donald hugs the trophy (which hopefully helped to ease the pain of handing over the \$30,000 check to the runner-up due to his amateur status).



The 18th green at Beverly C.C. with Les' maintenance building in the background.

Big sale! Settler's Hill Golf Course has the following items for sale on a "best-offer" basis:

- Two Toro GM III Greens-mowers with baskets and extra cutting unit
 - One Toro Reelmaster 5-blade cutting unit
 - Two Blitzer 5-blade cutting units with frames
 - One HF-5 10-blade cutting unit
 - Two National 30" 5-blade cutting units
 - One 60" Tooth bar for skid steer loader
 - One 3-gang ball picker
 - One electric range ball washer
 - 40 Par Aide cast aluminum rakes
 - 40 Par Aide rubber finger rakes
- Call Dan Murray at 630-232-4922 for details.

.....
 For sale: 1994 Ty-Crop TD400 Topdresser (4 cu. yd.) in excellent condition. Call Darin Hoffman at H&E Sod for information.

What will your Board of Directors look like next year?

The MAGCS Nominating Committee, chaired by president emeritus Bob Maibusch, announces the following slate of candidates for leadership roles in 2001. Voting will take place at the conclusion of the Midwest Turf Clinic at Medinah C.C. on November 9.

For president: **Brian Bossert**

For vice president: **Luke Strojny**

For secretary/treasurer: **Kevin DeRoo**

For director: **Phil Zeinert** (Kishwaukee C.C.)
 (three will be elected)

Gregg Rosenthal

(Kemper Lakes G.C.)

Mike Mumper

(Park Ridge C.C.)

Gary Hearn (Salt Creek G.C.)

Tim Anderson (Prestwick C.C.)

Good luck to all candidates!

On Course and the MAGCS thank our November advertisers.

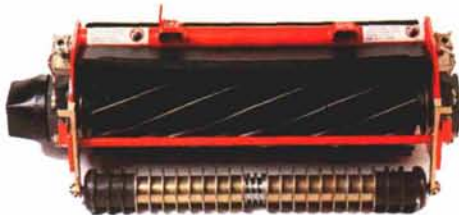
Accurate Tank Technologies	Frenzer Topdressing	Koelper Brothers	Midwest Turf & Tractor
Arthur Clesen, Inc.	Golf Creations	Koelper Golf Course Construction	Migratory Bird Management
Bayer	GolfVisions, LLC	Layne Western	Nels Johnson Tree Experts
BOJO Turf Supply	GreenCycle, Inc.	Lebanon Turf Products	On Target Animal Damage Control
The Bruce Company	GRO Horticultural Enterprises	Lemont Paving	Palatine Oil Company
Central Sod Farms	Halloran & Yauch	LESCO	Peerless Fence Co.
Century Rain Aid	H & E Sod Nursery	Lester's Material Service	Prime Turf
Chicago Turf & Irrigation	Heritage/Daconil	Lewis Equipment	Riverwalls Ltd.
Clauss Brothers	High PSI	Martin Design Partnership	Timberline
Commercial Turf	Hollembek Construction	Martin Implement Sales	Turf Partners
Conserv FS	Huber Ranch Sod Nursery	Master of the Links/Burdett's	(The) Turf Team
Dunteman Turf Farms	Illinois Lawn Equipment	McGinty Bros.	United Horticultural Supply
Eagle Container Corp.	Johnson and Associates	Meadow Equipment, Sales & Service	Zeneca Professional Products
Fluid State Systems	J. W. Turf, Inc.		

Light on Fairways. Heavy on Productivity.



Jacobsen® LF-3400™

The Jacobsen LF-3400 lightweight offers the best of both worlds. For a manicured finish, the LF-3400 features 7-blade, 5-inch diameter reels that lightly follow the contours of your fairways. The patented Jacobsen Turf Groomer™ turf conditioner provides proven thatch control. And for maximum productivity, the LF-3400 delivers 34-hp, a 100 inch mowing swath and the patented FlashAttach® reel-mounting system for quick changeovers and maintenance without tools. If you want the finish of a lightweight and the productivity of a heavyweight, come in or call today.



**illinois lawn
equipment, inc.**

World Class Turf...

Since 1954

800-942-8610

visit us at our website, www.illinoislawn.com

JACOBSEN

TEXTRON
GOLF & TURF



www.illisp.textron.com
AS IAEI 3400-0599 © 1999 Textron Turf Care And Specialty Products.
All rights reserved. Printed in the U.S.A.