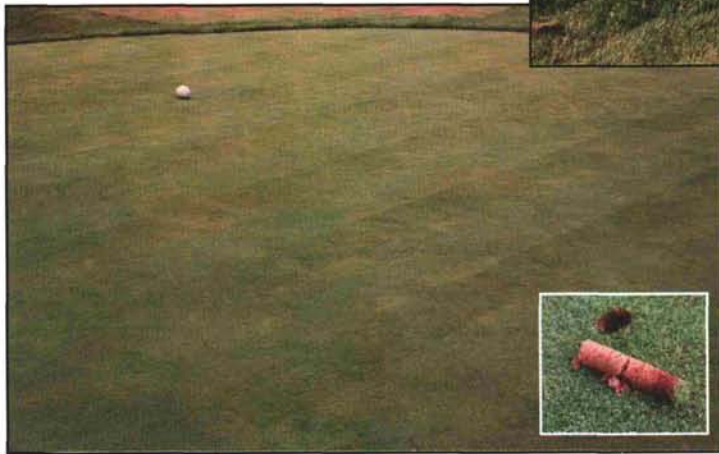
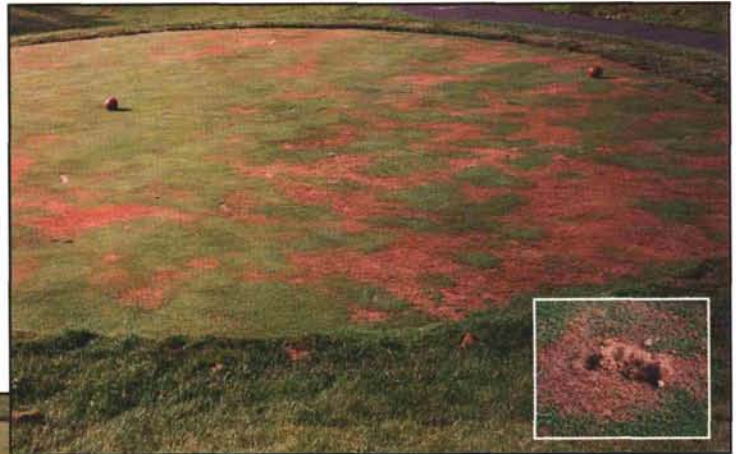


PREVENT

SUMMER PROBLEMS CAUSED BY WATER REPELLENCY!

UNTREATED

Summer stress conditions can prompt a rapid reduction in turf quality in tees, greens and fairways. By mid-summer, effects of extensive wilt, Localized Dry Spot (LDS) and turf decline are evident on this untreated tee (ladies tee box). Soil cores from symptomatic areas (inset) were powder dry, even after irrigation.



TREATED

Monthly applications of Primer 604 (started in late spring) on the men's tee box (of the same hole), showed superior turf quality. Even under conditions of severe summer stress, no afternoon wilt or LDS was observed. Soil cores from treated tee (inset) were uniformly moist, indicating improved penetration, infiltration and distribution of applied water (rainfall or irrigation).



NO WATERING IN REQUIRED • WILL NOT BURN



A STEP BEYOND

AQUATROLS
Making Water Work Efficiently

Call 1-800-257-7797

for information about Primer, a unique new chemistry that puts an end to summer stress concerns.

Distributed By:

BTSI
BOJO TURF SUPPLY INC.

24356 Harvest Hills Road
Frankfort, IL 60423
800-732-9401
FAX: 815-469-8248