

Terra Care Products, Inc.  
Terra Topper, Terra Broom,  
Terra Pick up Sweeper  
Terra Aerator

T.I.P., Inc.  
Greens Spiker / Seeder  
Amazone Groundkeeper

## JOHNSON AND ASSOCIATES

of Lombard, Inc.  
ROGER O. JOHNSON  
GRANT C. JOHNSON  
630-620-8198 - FAX 630-620-8119

109 E. Washington Blvd.  
Lombard, IL 60148-2637

Member  
MAGCS ITF

*Landscape Supplies  
Since 1960*



*Lester's Material Service, Inc.*

875 S. Highway 83 Grayslake, Illinois 60030  
847-223-7000 (fax) 847-223-7067

Brian E. Loftin  
Sales Manager

## TAKE CONTROL OF YOUR TURF !



Are grubbing skunks causing thousands of dollars worth of damage to your course?  
Are beavers having a field day with your freshly planted trees?

**On Target Animal Damage Control.**  
Specializes in the selective control of grubbing skunks and beaver removal. Our control methods have proven to be 100% effective in major golf courses in the Chicago area. Stop spending thousands of dollars on insecticides intended to control the grubs.

 **ON TARGET A.D.C.**  
P.O. BOX 469 CORTLAND, IL 60112  
815-286-3039



*"Golf Course Work  
a Specialty"*

## LEMONT PAVING CO.

EST. 1957

**MURPHY'S**

11550 Archer Ave., Lemont, IL 60439  
(630) 257-6701 • FAX 630-257-5194



Gregory E. Martin  
President

65 North River Lane

Suite 201

Geneva, Illinois 60134

630-232-9977

*Landscape  
Architecture*

*Golf Course  
Architecture*

*Land Planning*

*Specializing in Bedding Plants  
Large Variety Fall Mums*

## ANTON'S

**Greenhouses & Garden Centers**

Rick & Bob Anton  
**ANTON'S OF KENOSHA**  
9140 Cooper Rd. (51st Ave.)  
Kenosha, WI 53142  
414/694-2666

Gary Anton  
**ANTON'S OF EVANSTON**  
1126 Pitner Avenue  
Evanston, IL 60202  
847/864-1134



**GREG OLTMAN**  
President

**GRO** **HORTICULTURAL ENTERPRISES, INC.**

Office 847-669-8658  
Fax 847-669-8662

14440 MARENGO ROAD  
UNION, ILLINOIS 60180

# the Bull Sheet

## DATES TO REMEMBER

February 8-14 — GCSAA Conference, Orlando, FL.  
 .....  
 March — MAGCS monthly meeting at Poplar Creek G.C.  
 .....  
 April — We need a monthly meeting place.  
 .....  
 May — ITF meeting and golf.  
 .....  
 June — MAGCS monthly meeting at Broken Arrow G.C.  
 .....  
 July - MAGCS monthly meeting at Crystal Lake C.C.  
 .....

For sale: Toro VT4 and VT3 Satellites, very good condition. Call Bill Kennedy at Cress Creek C.C., 630-355-5736.  
 .....

Can anyone recall a year like 1998? It seemed to never end, to have no closure to it. People who dormant seeded in late October and early November had their seed germinate, and I know one person who even mowed it. Dandelions were blooming on December 15!  
 .....

I have been told by a reliable source that a laser pencil will really spook geese off the water at night. That is something to remember.  
 .....

Wanted: Used Toro GMIII cutting unit parts. Any type of roller to roll greens, pull type or self powered. Call Pete at Chicago Heights C.C., 708-755-7614 or fax 708-755-7857.  
 .....

What's constant? The answer is change. I always thought that sounded more like an oxymoron. But it is true; change is constant. Change is what will happen this year when I step down as editor of your newsletter. Judy and I are changing directions, and we will be moving to Montana sometime this year after we sell our house.

Being editor has been a rewarding experience since May 1983 when I put together my first *Bull Sheet*. Ray Gerber was too ill at the time to do the May and June issues, and I officially became your editor in July 1983 after Ray's death. At that time, the *Bull Sheet* was 18 pages; today it has reached 44 pages with 4-color and a name change to *On Course*.

It is too soon to say my "Good-bye" at this time for I will still be around for a couple of months. It has been a privilege and an honor to be your editor, and I thank you for your trust in me.

For sale: Spin and relief grind and coolant system. Grinder totally enclosed, auto traverse and feed, \$5,000 or best offer. Salsco walk-behind overseeder, like new, less than 50 hours of use, \$2,000 or best offer. Call Glenn at Sunset Ridge C.C., 847-446-5268.  
 .....

The Indiana-Illinois Turfgrass Short Course is scheduled for February 22-26, 1999, at the Holiday Inn, Willowbrook, IL. This course is designed for those who are employed or considering employment in the turf industry. The course covers basic information in turfgrass management, soils, fertility, and pest management. The instructions consist of lecture and hands-on laboratory sessions. For information, call Bev Bratton at 715-494-8039 or Tom Voigt at 217-333-7847.  
 .....

Congratulations to our 1998 golf champion, Tim Scott, on receiving his Certified Superintendent status in early December.  
 .....

J. W. Turf, Inc. is looking to fill a position in the Parts Department. Call John Buck at 847-683-4653.  
 .....

We are updating our list of members who wish to have their golf handicaps calculated through the MAGCS. Albie Staudt handled this assignment for many years, but the responsibility has fallen through the cracks over the past couple of years. As of January 1, we are completely disregarding the old list and starting a new one. **If you wish to be on the new list, please call George at the MAGCS office: 630-406-5356.** The CDGA is kind enough to offer this to our members complimentary. So as not to abuse the privilege, the MAGCS does encourage their members to have their handicap calculated through their own club or course, if at all possible. If you are interested, we could like to have your name **no later than March 20.** Any questions, call Brain Bossert, 847-677-4112.  
 .....

# Nels J. Johnson Tree Experts, Inc.

A Tradition — More Than 60 Years  
Of Complete, Dependable, Economical Tree Service  
For Private Estates, Municipalities, Schools, Industrial Areas,  
Parks and Golf Courses  
(847) 475-1877  
912 Pitner Ave., Evanston, IL 60202

Since 1930

From tee to tee . . .

## Nothing Greens a Course Like Sod.



**Look who's been using Central Sod to improve their courses . . .**


Ruffled Feathers	Blackberry Oaks	Fox Bend
Cog Hill	Naperbrook GC	Seven Bridges
Wynstone	Cantigny	Carillon GC
Stonebridge	Naperville CC	Highland Park
White Eagle	Illinois Center	Sunset Valley
Tamarack	Broken Arrow	Lake Point GC
Riverside Golf	Mill Creek	Downers Grove
Heritage Bluffs	Hidden Valley	Meadow Lake
Orchard Valley	Oak Brook GC	Waveland GC
Skokie CC	Rockford CC	Harborside Links

**See the impact Central Sod can have on your course.**

**Complete consultation, delivery & installation available.**

***CENTRAL***  
**SOD FARMS, INC.**  
**1-800-310-0402**

# A Letter to the MAGCS

n behalf of the Illinois Turfgrass Foundation Board and membership, I am writing to express our sincere appreciation for the 1998 donation of \$12,500 from Midwest Association of Golf Course Superintendents, presented at the recent North Central Turfgrass Exposition.

Your group's continued support of ITF's work to raise turf research and scholarship funds is truly valued and deeply important. We are proud to have been able to award over \$104,000 for turf research and scholarships in Illinois in 1998.

Our 1998 funding awarded \$4,000 in undergraduate scholarships; an additional \$1,500 has been raised by the University of

Illinois Turfgrass Alumni group. The research farms/field plots at the University of Illinois and Southern Illinois University have received \$16,000 and \$5,700 respectively.

ITF funded researchers: Dr. Bruce Branham, Dr. Ken Diesburg, Dr. Tom Fermanian, Dr. Tom Voigt and Dr. Hank Wilkinson each received grants of \$15,500 in support of their ongoing programs. The ITF Board has established a \$10,000 research surplus, which may be awarded competitively in 1999.

We are proud of the research being done which helps to educate the turf professional and leads to improved turf on the golf course, home lawn and public park. We are truly excited about

the future of ITF and committed to building the strength and quality of the Illinois turfgrass industry.

If at any time you have a question about ITF activities or goals, please call me. We would welcome an opportunity meet with your membership or board to discuss mutual interests or needs. Please pass on our deep thanks to your membership for the continuing support of ITF's mission.

Randy Wahler  
President  
Illinois Turfgrass Foundation




---

## IPM — What Does It Mean?

(continued from page 10)

been achieved over time. A turf manager must determine the biological outcome of the control used both positive and negative. What is the overall value of a particular management program; is it effective, costly? If symptoms have been treated, what are the causes; can they be corrected? Develop a plan for remediation. Can physical or environmental factors be changed, influenced? Map the problems and the results. Does this area have the same problem at the same time or place, and can we determine the cause? Can we seek other interdisciplinary opinions?

Golf turf is part of a complex ecosystem that is influenced by many different factors, both natural and man-made. Understanding these factors, their

influence on turf health and management and the interactions of the many factors are key to maintaining healthy, playable turf. Knowing and measuring these factors allows turf managers a way to learn to manipulate the environment (golf course turf) for our customers' benefit while preserving the habitats and environment around us. Not only are we as managers asked to maintain our turf for quality at all times, we must do so with increasing demand for our product and increasing scrutiny of how we do it. We must stay within certain limits or standards, economically within our budgets, socially within legal limits and societal standards, and environmentally to preserve and protect and possibly improve the ecology of our local surroundings. 


---

## Paying For a College Education . . .

(continued from page 16)

In some cases, *zero coupon municipal bonds* can be an effective means of building your child's college fund. Zeros sell at a deep discount and do not pay annual interest. Instead, you receive the face value of the bond at maturity. Be aware that these bonds have greater market volatility than bonds which pay interest regularly. Zeros can be attractive college investment vehicles since they can be purchased so that their maturity dates are staggered to coincide with the years during which your child attends college.

## Plan today for the long term

Your child's education is one of your most important financial decisions. 



**DARRELL KOELPER**  
PRESIDENT

GOLF COURSE  
CONSTRUCTION & REMODELING

MARENGO, IL

**KOELPER  
GOLF COURSE  
CONSTRUCTION  
COMPANY**

OFFICE: 815-568-8382  
FAX: 815-568-1048  
HOME: 815-568-6603

**RIVERWALLS LTD.**

522 South Northwest Hwy. Barrington, IL 60011

**GOLF COURSE ENHANCEMENT**

SEA WALLS - STEEL, VINYL, WOOD, ROCK,  
BLOCK, GABION BASKETS, COCONUT ROLLS

EROSION CONTROL, RIP-RAP, CART PATH INSTALLATION

1-888-254-4155  
OFFICE: 847-382-9696  
DARRYL SCOTT BURKETT MOBILE: 847-338-9720  
C.E.O. FAX: 847-516-0116

On the NET: <http://expage.com/page/Riverwalls>

**PEERLESS  
FENCE**

Div of Peerless Ent. Inc.  
THE FENCE PEOPLE • SINCE 1949



Member American  
Fence Association

3N381 Powis Rd.  
West Chicago, IL. 60185  
(630) 584-7710  
IL (800) 543-6511  
FAX (630) 584-7746

*John M. Seger CFP*  
Senior Sales Manager  
Certified Fence Professional

**ACCURATE  
TANK  
TECHNOLOGIES**

- Precision Tank Tightness Testing
- Upgrades for Tanks & Leak Detection Systems
- Install Underground & Aboveground Fuel Tanks
- Removal of Tanks

**Your Complete, Professional Tank Experts**

Please contact us at:

1-800-773-Tank or 630-375-6121



**Agriculture Division**

**John Turner**  
Field Sales Representative

Garden & Professional Care

Bayer Corporation  
40 W 665 Campton Woods Drive  
Elburn, IL 60119  
Phone: 630 443-7807  
Fax: 630 443-7839  
Voicemail: 888 242-4200,  
Extension: 3101  
john.turner.b@bayer.com



360 Schaumburg Rd.  
Streamwood, IL 60107

(630) 830-7405  
FAX (630) 830-9652

**CLAUSS  
BROTHERS, Inc.**  
GOLF COURSE  
CONSTRUCTION AND RENOVATION  
LARGE TREE MOVING



**Burdett's, Inc.**

Post Office Box 1865  
Lombard, IL 60148-1865

**1-888-TURF-888**

1-630-620-5558  
Fax 1-630-627-1100

*Quality Products for  
the Golf Course*



**Timberline** / Golf Course Remodeling  
DBA Bill Boyd And Renovation

At Timberline, we look upon each project as an opportunity to create, challenge and beautify your existing golf course layouts so that it will blend in with the surrounding environment and "stand the test of time."

1907 Darien Club Drive, Darien, IL 60561  
630/963-9088 □ Pager: 708/850-0159

**SUPPORT YOUR ADVERTISERS.  
THEY SUPPORT YOU.**

**Spanish**

Home Study • GCSAA • 3 CEUs  
Jennifer Thomas • 847-491-0011

**KOELPER BROS.**

**Golf Course Building and Remodeling**

444 E. Mors Avenue  
Wheeling, Illinois 60090  
FAX 847-541-4619

847-438-7881 847-541-9182  
DANIEL I. KOELPER VICTOR C. KOELPER

# Chicago Botanic Garden Launches Web Site Featuring Illinois' Best Plants

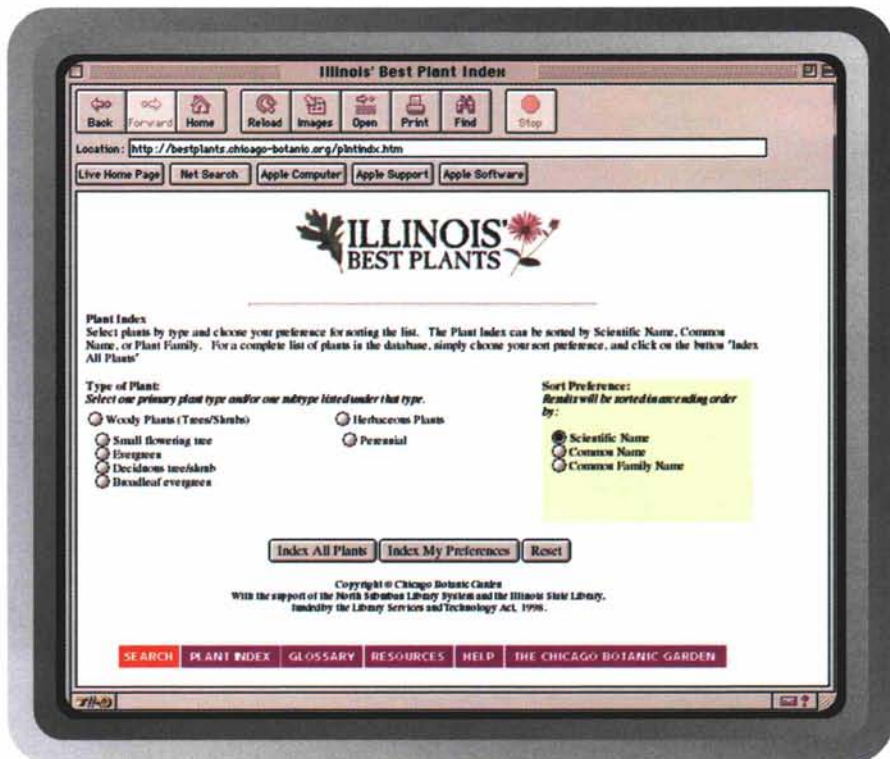
C H I C A G O  
B O T A N I C  
G A R D E N

*Sheryl Hislop Cash  
Chicago Botanic Garden  
Glencoe, Illinois*

Illinois residents can now choose the best plants and trees based on their tastes and gardening needs through a unique web site unveiled today by The Chicago Botanic Garden

"The new Illinois' Best Plants web site allows gardeners to easily choose and learn more about trees, evergreens, shrubs and perennials based on proven performance based on location, size, color and other characteristics," said Sue Brogdon, vice president of programs at the Garden. "You can even choose plants based on whether or not they attract butterflies, their resistance to deer, and fall color.

The new web site — accessed through <http://bestplants.chicago-botanic.org> or <http://chicago-botanic.org>—was developed by horticulturalists at the Chicago Botanic Garden and faculty from the University of Illinois at Champaign-Urbana and Western Illinois University. The



Illinois State Library provided funding for the educational web site through the Library Services and Technology Act of 1998; the North Suburban Library System provided technical support.

The new interactive database also provides vivid photos and summarized information on each plant, including plant care and recommended varieties. There is an alphabetical list of woody and herbaceous plants in Illinois arranged by scientific names; definitions of plant terms; and a list of books, videotapes and CD-ROM that provide additional gardening information.

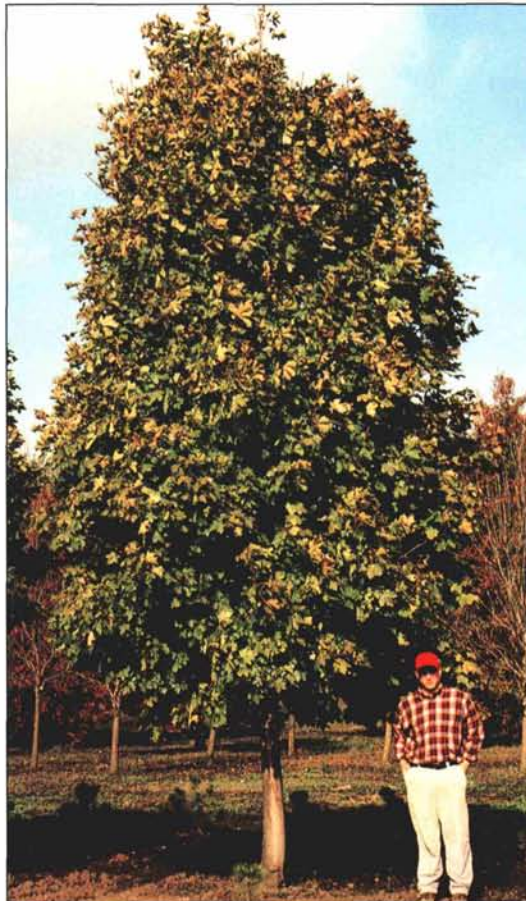
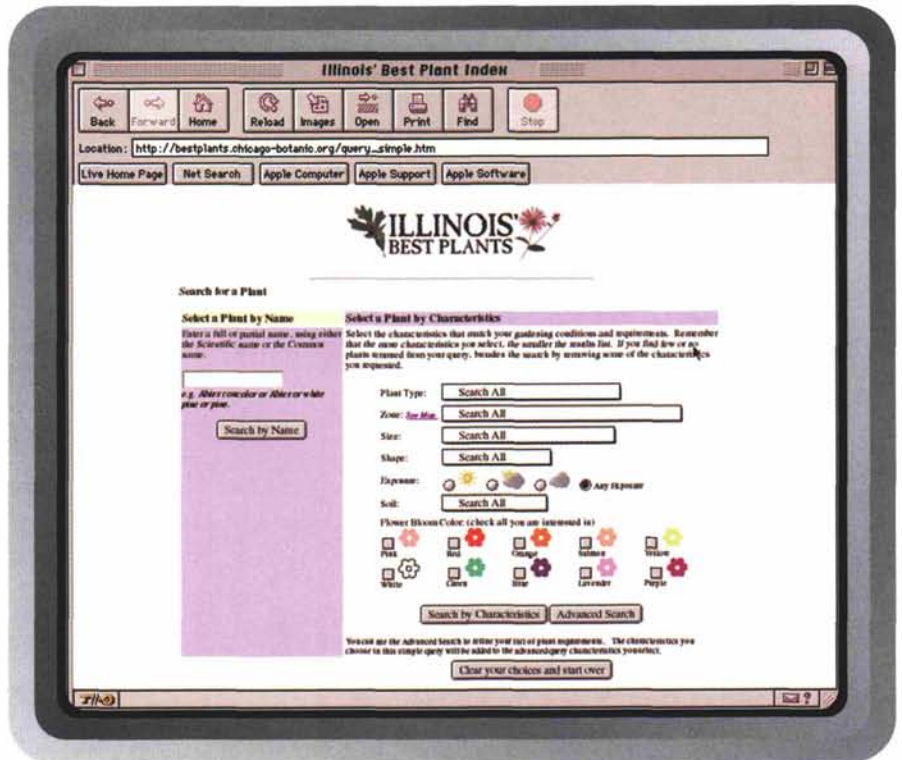
A voice feature allows users to hear the correct pronunciation of each scientific plant name.

The web site is easy to use. Simply enter the plant's common or scientific name, or choose from a list of basic characteristics: plant site, hardiness zones, size, shape, exposure, soil and flower bloom color. The database will then provide a list of plants matching the given criteria.

Users can also choose an advanced search option featuring more detailed characteristics including flower bloom time, fall color, fruit, winter interest (bark, fruit, growth habit and/or leaf retention), landscape use, and wildlife interest (attracts birds or butterflies, resistance to deer, and/or native to the Midwest).

Residents living in the Midwest or other parts of the country with similar climate and soil conditions as Illinois can also benefit from a web site.

In the future, the database will grow to include annuals, vines, roses and ground covers, as well as additional photographs.



- Supplier and installer of quality large caliper Shade, Ornamental and Evergreen trees.
- Reduced pricing on select stock due to future development plans of our nursery.
- Perfect for instant shade, windbreaks, screening and beauty.
- Contact us for a tour of the nursery, current availability and/or pricing.
- (847) 949-6667  
(847) 949-6668 fax



*Poul's Landscaping  
& Nursery, Inc.*

6754 W. Indian Creek Road  
Long Grove, Illinois 60047



## FULL SERVICE GROUND WATER SPECIALISTS



# Meadow Equipment Sales & Service, Inc.

Well Drilling Contractors / Pump Service  
27 W. 021 St. Charles Road  
Carol Stream, IL 60188

- Water Well Drilling
- Pump Sales and Service
- Water Well Sealing & Capping
- Complete Waterwell Systems
- Large Selection of Pumps  
Line Shaft / Submersible
- Well Rehab & Chlorinations
- Maintenance Programs
- 24 Hour Emergency Service

Authorized Sales and Service for  
Leading Pump Manufacturers

WHEATON: (630) 231-6250  
ST. CHARLES: (630) 584-6210  
TOLL FREE: (800) 704-2415



*"Where Meadow Goes,  
the Water Flows"*

## Introducing Landpride Multi Injection Systems



The Only Unit On The Market  
To Inject Dry Or Liquids  
To The Root Of The Problem.  
And Introducing The Star Of  
The 1998 Masters - **SubAir**  
Control The Root Zone  
Through Science



Give Your Roots Some Air  
With SubAir Precision  
Injection Of Dry Or Liquid  
Amendments With LandPride  
Exclusively Distributed  
By: Lewis Equipment  
55 E. Palatine Rd.  
Prospect Heights Il 60070  
(847)537-6110 fax: (847)537-5736  
Represented By: John Berarducci  
Call The Bear: (847)367-7728  
mobile: (847)347-5105



**TORO**<sup>®</sup>

**Groundsmaster™ 3000-D**

- Advanced Guardian® 84" Recycler® deck for greater productivity
- New quick-attach system makes implement changing a breeze

**630-773-5555**  
**FAX 630-773-4273**



**Chicago**  
**Turf & Irrigation** Inc.

1170 W. Ardmore • Itasca, Illinois 60143

**TORO**<sup>®</sup>

**Workman™ 3000 Series**

Finally, a work vehicle choice.  
A reliable 4 wheel work vehicle  
with versatile capacity and three  
wheel maneuverability.

**630-773-5555**  
**FAX 630-773-4273**



**Chicago**  
**Turf & Irrigation** Inc.

1170 W. Ardmore • Itasca, Illinois 60143