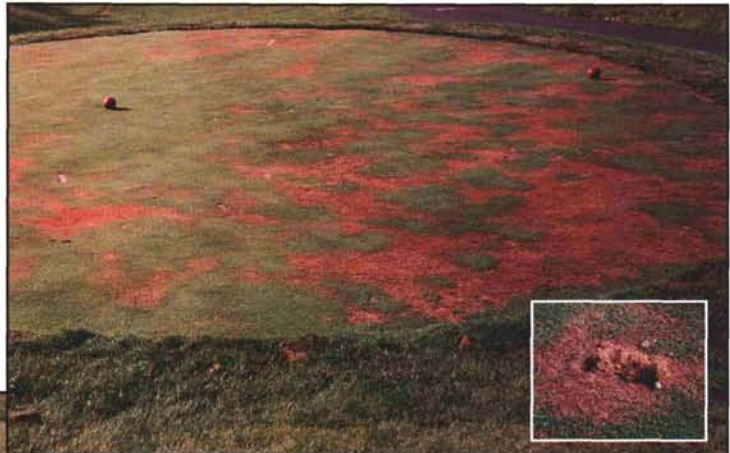


PREVENT

SUMMER PROBLEMS CAUSED BY WATER REPELLENCY!

UNTREATED

Summer stress conditions can prompt a rapid reduction in turf quality in tees, greens and fairways. By mid-summer, effects of extensive wilt, Localized Dry Spot (LDS) and turf decline are evident on this untreated tee (ladies tee box). Soil cores from symptomatic areas (inset) were powder dry, even after irrigation.



TREATED

Monthly applications of Primer 604 (started in late spring) on the men's tee box (of the same hole), showed superior turf quality. Even under conditions of severe summer stress, no afternoon wilt or LDS was observed. Soil cores from treated tee (inset) were uniformly moist, indicating improved penetration, infiltration and distribution of applied water (rainfall or irrigation).



NO WATERING IN REQUIRED • WILL NOT BURN



A STEP BEYOND

AQUATROLS
Making Water Work Efficiently

Call 1-800-257-7797

for information about Primer, a unique new chemistry that puts an end to summer stress concerns.

Distributed By:

BTSI
BOJO TURF SUPPLY INC.

24356 Harvest Hills Road
Frankfort, IL 60423
800-732-9401
FAX: 815-469-8248

superintendents who have dipped into the biological trends speak at the annual meeting.

Move the speaker up in front of golf.

Rest assured, we will try that this year. Please show up early and support the effort when we do.

More education. Never be complacent with education. More events like Medinah during off-season.

The March meeting has been expanded to at least two hours of education in the past few years. The Spanish class has now been offered three times in the past year. Despite small numbers, there was a CPR training class offered twice in the past couple of years.

No education at the summer meetings.

At this point, we really don't feel this is an option. With no formal education, many members can not justify the expense to their club.

In closing, the Education Committee is listening to the membership and improving when possible. However, I would encourage you to be realistic with what you expect. Certainly, someone who has been in the business several years is not going to pick up 20 new ideas in an hour of education. I've never attended a GCSAA seminar and walked out with 8 hours of fresh information. I was told it's the "little things" that can separate your course from the one down the street. Sometimes, one or two new ideas that can be shaped into your operation make a whole day of education worth the effort. It all starts with showing up and participating. So please, when the education that you have asked for is provided, do your part by making yourself available. ■

can we preach: SPEED KILLS! **If golfers learned anything from last season, it's that necessary adjustments made to our maintenance program may affect play and, more importantly, keep the grass growing.**

Communication and education are probably the most useful tools in a superintendent's arsenal. At Hinsdale G.C., Bob Maibush used every opportunity to inform his members of the brutal effect of the summer heat not only at his club but throughout the region. Along with Dr. Randy Kane of the CDGA, Bob put out several press releases describing the weather's effect on our courses.

Dan Dinelli at North Shore C.C. turned last year's struggles positive. The wet spring demonstrated a need for drainage improvements, and the summer heat brought forth the need for precise irrigation and sound agronomics. Jacobson Golf Design was retained to formulate a 5-year plan designed, as Dan puts it, "to focus on the infrastructure. . . . This plan has very little to do with design of the layout as it deals with drainage, irrigation, green construction, and the use of newer bents." Dan normally takes a proactive approach in most of his management practices as witnessed in his extensive computerized weather tracking, micro-organism research, and a 10,000+ sq. ft. bentgrass evaluation nursery.

The membership at Chicago G.C. wants a dry, firm playing surface—and they got it in 1995. Superintendent Bill Whitley didn't put much water on the fairways and even less on the greens (in his estimation, 60 percent less). While there were localized dry spots on the greens, Bill assured the membership that although it didn't look as lush, it

putted fine. The die-hard traditionalist membership resisted overseeding the fairways until Bill was able to devise a seed mix that was more drought tolerant than creeping bentgrass so that they can continue to enjoy a dry, firm surface. The custom mix of colonial bent, chewings, and hard fescue will also require less plant protectants and fertilizers.

If the golfing world wasn't already aware, last season illustrated that the most important person at their golf course is the superintendent. Our programs have the most influence on the club's bottom line. Those courses that suffered damage last season also reported revenue losses. The food may have been tasty or the swimming pool refreshing, but if the course isn't "up to par," golfers simply won't show up.

The challenge is there for us to show the golfing community that we can rebound. Those courses suffering the most damage have already worked feverishly last fall to restore playing conditions. Golf course superintendents have a history of attacking problems head on. So, go ahead, golfers, have a good memory, because with Mother Nature willing, we are up for the challenge! ■



MARTIN DESIGN

PARTNERSHIP

Golf Course Architecture • Renovation • Master Planning

"Exceeding the expectations..."

65 North River Lane, Suite 201
Geneva, Illinois 60134

Phone 708-232-9977
Fax 708-232-9971

HOLLEBEAK EXCAVATING & GOLF COURSE CONSTRUCTION INC.



MIKE HOLLEBEAK
708-556-3891

Box 103 GRANART RD.
BIG ROCK, IL 60511

LOHMANN

GOLF DESIGNS, INC.

GOLF COURSE DESIGN,
AND CONSTRUCTION MANAGEMENT



MARENGO, IL

815-923-3400

OLD



DUTCH

SAND COMPANY, INC.

TOP DRESSING SAND
BUNKER SAND
PEA GRAVEL
BOULDERS & RIP RAP
ALL GOLF COURSE AGGREGATES

Call
Richard E. Mika

(312) 374-2303
(847) 228-9607
(219) 938-7020



VERTI-DRAIN®
The Ultimate Solution For Compacted Soil

Mechanical Soil Technology

— Contract Aeration Service —
Serving The Entire Midwest

David Strang
Ph. (800) 743-2419

442 Pine St.
Galesburg, IL 61401

Golf Course Chemical Storage Buildings

Carlisle Building Systems, Inc.
Prefabricated Relocatable Steel Buildings

Featuring:

- Secondary spill containment which exceeds OSHA Codes. UL, FM approved.
- Heavy-duty locking mechanism for added security
- Forklift pockets for ease of relocation
- Constructed of 10 gauge steel to provide structural strength
- Optional ventilation, lighting, temperature control, Fire Suppression Systems
- No Building Permits required

Other Products

- Secondary Containment Pallets and Sumps
- Rinseate Collection Pads

Contact: **Larry Sievertsen** - (847)426-0164 FAX (847)426-0070
Fluid State Systems, Inc.
35W753 Parsons Rd., W. Dundee, IL. 60118

(800) 553-6320
Joe Marley, Owner

1111 Timber Trails
Downers Grove, IL 60516

TURF Concepts

Specializing in fine
turf cultivation



Golf Course Hydroinjection
- Day or Evening Hours
- 2 Machines Per Course



360 Schaumburg Rd.
Streamwood, IL 60107

(708) 830-7405
FAX (708) 830-9652

CLAUSS BROTHERS, Inc.

GOLF COURSE
CONSTRUCTION AND RENOVATION
LARGE TREE MOVING

1995 Honeylocust Pest Complex
(continued from page 14)

have disappeared. There is only one generation each year. Honeylocust will continue to put on new foliage throughout the season as long as conditions are favorable for growth. By the middle or end of July, most trees have recovered and look fairly normal.

Management of this insect complex is straight forward. Both insects have been around for a long time. Damage has been of little concern except in localized situations. Why the population exploded last year is unclear but probably relates back to ideal weather conditions during mating, egg laying, overwintering, and developmental periods.

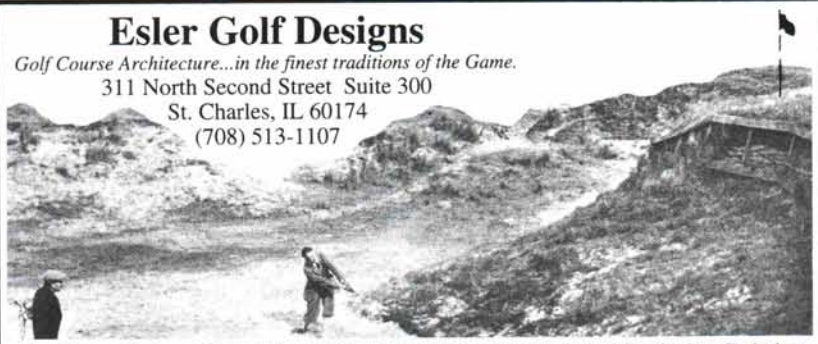
The best strategy is to monitor honeylocust trees during and following bud break. Pay special attention to trees that were heavily infested last spring. Look for

the rapidly moving nymphs of both insects. Leafhopper nymphs will have a triangular, hump-backed shape, whereas the plant bugs will be flat and oval. Nymphs of both species are light green and very small.

If nymphs are abundant, the trees can be treated with any labeled insecticide. Soaps and oils would work against the youngest nymphs but would likely need to be repeated.

If there are only a few nymphs present, consider not treating or delaying treatment applications for a few days. Honeylocusts are tough plants and can recover rather easily from this type of injury. Trees that look like they will surely die in the spring usually releaf and look little worse for the wear after a few weeks. Consider mulching, light fertilization and good water management as an alternative to spraying. ■

Esler Golf Designs
Golf Course Architecture...in the finest traditions of the Game.
311 North Second Street Suite 300
St. Charles, IL 60174
(708) 513-1107



New Course Design • Master Plans • Historic Restoration • Environmental Sensitivity • Redesign

ONE WAY TO IMPROVE YOUR WELL EFFICIENCY



The normal operation of any water pumping system inevitably lead to less efficient well production due to pump wear and well plugging.

At Layne-Western we have the resources and expertise to provide you with innovative solutions to keep your water pumping system operating at peak efficiency. Our complete repair and maintenance services help guard against costly breakdowns and quickly solve problems that arise.

Call the Layne professionals with over 100 years of experience in the water supply industry.



Layne-Western Company

721 West Illinois Avenue • Aurora, Illinois 60506 • 708/897-6941
229 West Indiana Avenue • Beecher, Illinois 60401 • 708/946-2244



Burdett's, Inc.

2835 South State Street
Lockport, IL 60441
Phone 815-740-5656

Call Us Anytime --

We Want to Serve You
BETTER!!!

ACCURATE TANK TECHNOLOGIES

- Precision Tank Tightness Testing; without filling your tanks
- All Upgrades for 1998
- Install Underground Storage Tanks
- Install Aboveground Storage Tanks

Your Complete, Professional, Tank Experts.

Please contact us at:

1-800-773-Tank, (708) 393-1998

MIKE SCHULZ GOLF DESIGNS

New Golf Course Design
Master Planning & Remodeling Design

Wauconda, IL (847) 526-2762



Phone (708) 289-6300
Fax (708) 289-6380

Superior *Lightning* Protection Co.

Formerly Meinhardt Lightning Protection Co.
Improved Lightning Rods
Residential • Commercial • Industrial
U/L Listed

U.L. Masterlabel Installations & L.P.I. Certified Installations

We specialize in protection for Country Clubs, Clubhouses,
Maintenance Buildings, Shelters, Trees etc.
Early warning systems and surge protection.

"Golf Course Work a Specialty"

LEMONT PAVING CO.

Lemont, IL 60439

Jim, Tracy Murphy

(708) 257-6701



PAARLBERG'S INC.

GARDEN CENTER • LANDSCAPE • GOLF COURSE
AGRICULTURAL SUPPLIES

CHIPCO TURF PRODUCTS
SHAWS • LEBANON • PAREX
ALL MAJOR TURF SUPPLIES

1840 E. 172ND STREET, SOUTH HOLLAND, IL 60473
708-474-9900 815-469-6730

professional lawn and tree care



TREE CARE HYDROSEEDING PRAIRIE SEEDING

851 SETON COURT • WHEELING, ILLINOIS 60090-5790
(847) 215-2112 • (847) 215-9176 Fax

VERTI-DRAIN®

Deep Core Aeration Machine

Rent for Only \$750 per day

For Details Call

815-338-4320



Timberline

DBA Bill Boyd

Golf Course Remodeling
And Renovation

At Timberline, we look upon each project as an opportunity to create, challenge and beautify your existing golf course layouts so that it will blend in with the surrounding environment and "stand the test of time."

1907 Darien Club Drive, Darien, IL 60561
708/963-9088 ☐ Pager: 708/850-0159

PEERLESS FENCE CO.

3N381 Powis Rd.
West Chicago, IL

- Chain-Link Fencing
- Wood Fencing
- Special Gates
- Driving Range Fencing
- Tee Protection Fencing
- Wood & Steel Guard-Rails
- Golf Course Work Our Specialty

708/584-7710

Hal Laman

MILLCREEK TOP DRESSERS

**An Easy Way to Dispose
of Grass Clippings...
And Save Money**



In one easy step, eliminate costly dumping fees and improve the rough by spreading grass clippings still enriched with precious fertilizer. Millcreek's Top Dressers are equipped with an adjustable undershot poly brush designed to evenly distribute top dressing from three to ten feet wide.

The spreading uses of these Top Dressers are endless:

- Fertilizer
- Sand
- Top Dressing
- Grass Clippings
- Seed
- Compost

Models are available with PTO or Engine Drive.

For More Information, please contact:

Avery Harris

LEWIS EQUIPMENT

(708) 537-6110

55 East Palatine Road
Prospect Heights, IL 60070
FAX (708) 537-5736

Distributor of:
MILLCREEK
TURF PRODUCTS



Whether your tree is in the ground or balled and bur-lapped waiting to go in the ground, the TREGATOR® will keep the tree watered with minimal la-

bor, provide deep saturation, and make everyone a watering professional.

FOR INFORMATION CALL:

Arthur Clesen, Inc



543 Diens Drive Wheeling, IL 60090
(847) 537-2177 FAX (847) 537-2210

B & G CONSULTANTS, INC.

SALES REPRESENTATIVES FOR:

- Green Turf International
- Arthur Weller Nursery, Inc.
- Aqua Aid Products

DISTRIBUTORS FOR:

- Ironite Superferrite
- Kno-Marks
- Purcell's Polyon Fertilizers
- Axis
- Penn Mulch

**240 Annapolis Drive
Vernon Hills, Illinois 60061**

Phone (708) 367-7728

(708) 363-9520

Fax (708) 680-6237

WHY YOU NEED PROTECTION FOR YOUR IRRIGATION CONTROL SYSTEM



Devastating lightning strikes and catastrophic power surges and spikes are all too common occurrences on today's golf courses. The sensitive nature of today's critical computer based systems require special coordinated

protection to prevent catastrophic damage to expensive irrigation control equipment.

The D & B Power Protection Package is designed specifically for golf course irrigation systems to eliminate the problem. For a free brochure contact:

D & B SALES ASSOC. INC.

140 Glengarry Drive, Geneva IL 60134

708-232-6411 fax708-232-6414

USE NATIVE GRASSES & WILD FLOWERS



You and the environment
will reap the benefits:

- Less water use
- Less pesticide use
- Less maintenance
- Establish habitats for small wildlife and birds
- Meet the criteria for participation in the Audubon Cooperative Sanctuary Program
- Add to the beauty and diversity of the golf course

To learn all about the selection, establishment and maintenance of these "naturals," talk to the long-time experts at Lofts.

(800) 526-3890

Ext 207 for technical information

Ext 250 for literature



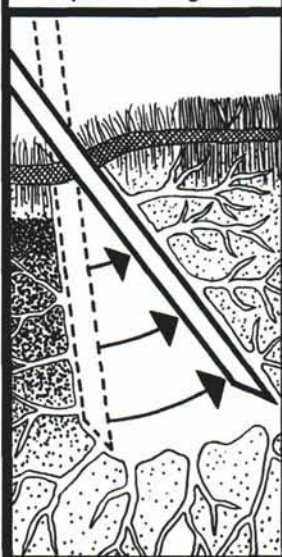
Lofts Seed Inc.
Somerset, NJ 08873

QUALITY CONTRACTING · QUALITY SERVICE · QUALITY RESULTS

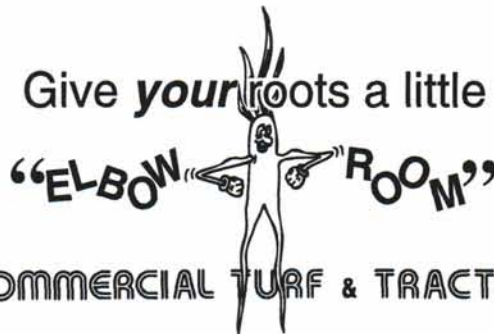
QUALITY CONTRACTING · QUALITY SERVICE · QUALITY RESULTS

VERTI-DRAIN®! WE GET RESULTS! HERE'S HOW WE DO IT!

Deep tine lifting fractures subsoil to restore soil porosity and promote root growth.



- #1 U.S. Contractor and Distributor
- 12 Years Experience—Results You Can Count On
- Out-Performs All Other Deep Aerators
- Customer Satisfaction & Convenience Is Our Focus



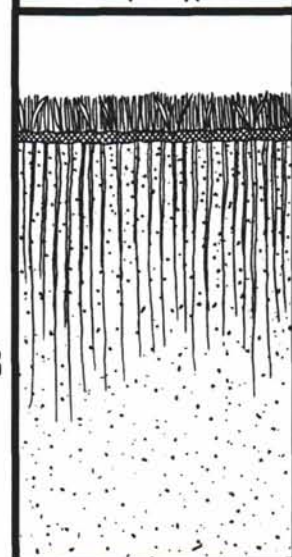
COMMERCIAL TURF & TRACTOR

1-800-748-7497

**BEST BUILT, BEST BACKED, BEST BUY
FOR YOUR CONTRACTING DOLLAR!**

TRUST YOUR TURF TO US

Result is porous, well-draining, deeply rooted greens that maximize topical applications.



QUALITY CONTRACTING · QUALITY SERVICE · QUALITY RESULTS

QUALITY CONTRACTING · QUALITY SERVICE · QUALITY RESULTS