

Par Ex® introduces a family of mid-sized fertilizer grades designed to meet the needs of today's closely-mowed turf.



Par Ex® and IBDU® are registered trademarks of Vigoro Industries, Inc.

WHY MID-SIZE GRADES FOR CLOSELY-MOWED TURF?

BECAUSE fairway-sized particles are too large to apply to closely-mowed turf.

BECAUSE greens-sized products can be difficult to spread.

BECAUSE IBDU® is the most reliable, most consistent source of slow-release nitrogen.

For more information contact:
Tom Skinner
Specialty Products
Territory Manager
319/524-8912

REMEMBER TO WEAR YOUR NAME BADGES AT OUR MEETINGS.

TALK TO TERRA

For all major brands of pesticides, adjuvants, fertilizer, micronutrients and turf seed.

Plus technical support, agronomic advice and service.

Call Bill Johnson at (800) 642-2783 for the Terra representative nearest you.



Specializing in Golf Course Renovations

- Tees • Greens • Traps • Fairways
- Hydroseeding • Plant Installation •

company, inc.
don fiore

landscape contractors & architects
golf course contractors

28846 Nagel Court
Lake Bluff, Illinois 60044
708-234-0020
Fax 708-234-0922

Certified Member: American Society of Landscape Architects
Midwest Association of Golf Course Superintendents



FULL SERVICE GROUND WATER SPECIALISTS



Meadow Equipment Sales & Service, Inc.

Well Drilling Contractors / Pump Service
27 W. 021 St. Charles Road
Carol Stream, IL 60188

- Water Well Drilling
- Pump Sales and Service
- Water Well Sealing & Capping
- Complete Waterwell Systems
- Large Selection of Pumps
Line Shaft / Submersible
- Well Rehab & Chlorinations
- Maintenance Programs
- 24 Hour Emergency Service

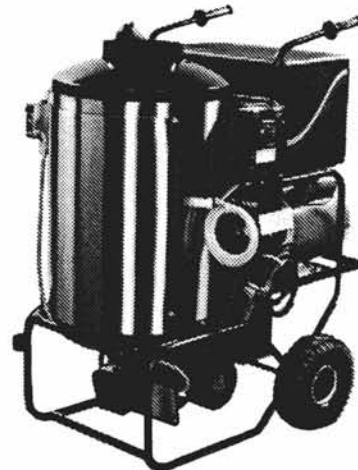
**Authorized Sales and Service for
Leading Pump Manufacturers**

WHEATON: (708) 231-6250
ST. CHARLES: (708) 584-6210
BENSENVILLE: (708) 766-1906



*"Where Meadow Goes,
the Water Flows"*

PRESSURE WASHERS



250
to
2,000
PSI

NEW AND USED

FREE DEMO

- SALES
- SERVICE
- PARTS
- CHEMICALS

CALL TOLL FREE 1-800-666-3900

"The Cleaning Equipment Specialists Since 1976"



TIM LAYDEN
General Manager

708-893-0777 • FAX (708) 893-1045

1-800-666-3900
Sales Service Parts Rentals Chemicals
25 S. Park Street • Roselle, Illinois 60172

The photo is showing a demonstration of "light weight mowing" in the 1950's. The driver is Roy Hannaman and Joe Dinelli is on the ground showing that the low PSI won't hurt. (Joe just had a hip replaced in the last two months — any connection?). Standing watching the demonstration are left to right: First person, unknown; Warren Roseman, third unknown, Albie Staudt, Jerry Dearie, and Frank Mastrollo.



Since 1930

A Tradition

*More than 60 years of
complete, dependable and
economical tree service.*

Nels J. Johnson Tree Experts, Inc.

Nels J. Johnson, Jr.
President

Karl G. Johnson
Vice President

Fully Insured

Main Office: 912 Pitner Avenue, Evanston, IL 60202

Telephone: (708) 475-1877

Fax: (708) 475-0037

ONE WAY TO IMPROVE YOUR WELL EFFICIENCY



The normal operation of any water pumping system inevitably lead to less efficient well production due to pump wear and well plugging.

At Layne-Western we have the resources and expertise to provide you with innovative solutions to keep your water pumping system operating at peak efficiency. Our complete repair and maintenance services help guard against costly breakdowns and quickly solve problems that arise.

Call the Layne professionals with over 100 years of experience in the water supply industry.



Layne-Western Company

721 West Illinois Avenue • Aurora, Illinois 60506 • 708/897-6941
229 West Indiana Avenue • Beecher, Illinois 60401 • 708/946-2244



Construction Services to the Golf Industry

Your source for Golf Course Construction, Reconstruction & Improvement.

You have the Projects, Ideas & Needs. We have the Experience & Equipment to do the job **Right the First time.**

Many Trucks
Equipped with
High Flootation
Tires to
Minimize
Damage to your
Golf Course



- New Construction
- Remodelling
- Irrigation
- Drainage
- Feature Shaping
- Trap Sand Replacement

- Water Control Structures
- Pond Cleaning
- New Ponds
- Pond Lining
- Cart Paths



Specialized
Equipment
suited to
Cleaning your
existing Golf
Course
Water
Features.

CALL US TODAY!!

Lee Bruce

(608) 836-7041

Carl Dowse

Established 1953

“Fall Fertilization”

by Alex Binnie, Greenkeeper

Shoreacres Golf Club, Lake Bluff, IL, and Chairman
of the Editorial Council of the National Greenkeeper

In my opinion, any budget that fails to provide for an annual appropriation for fairway fertilization is incomplete. It is essential for the proper maintenance of any golf course. The plan which we have adopted, our reasons and methods for the application of fertilizers, and the results which we have obtained are outlined below.

In the first place, I am a firm believer in fall fertilization. It has many advantages over spring fertilization or haphazard methods. I might enumerate a few:

FIRST — Maintenance work is at its lowest in the fall as compared with the spring or summer months and fertilizing can be done with labor that would otherwise represent idle time.

From an economical standpoint the plan is ideal.

SECOND — More hardy growth is developed. Fall fertilizers will, as a rule, stimulate the root system without promoting abnormal growth, to the extent that there is less winter kill. The real benefit, however, comes when the frost and the rain dissolve the fertilizers and work them deeper into the soil, thereby encouraging a deeper and more hardy root system rather than a shallow turf which is an inevitable result when fertilizers are on top of the soil rather than in it.

THIRD — And last, bad spots on the fairways are apparent and are sure to receive attention in the fall, whereas, some are apt to be forgotten in the spring.

As I mentioned before, our plan contemplates an annual appropriation for fairway fertilization. We do not attempt to fertilize all fairways in any one year, but rather to cover a few each year, never overlooking any spot on the entire course that is not up to standard even though it is necessary to treat it each season.

And also we do not broadcast fertilizers with a prayer on our lips. The fairways are disced and rediscd and the fertilizers worked well into the soil.

The results which we have obtained have been very satisfactory. We have good fairways — no winter kill — our turf has a splendid root system — and our grasses are hardy. Our fairways are cut three times each week. Why shouldn't I believe in fall fertilization?

Editor's Comments: The above was sent to me by Bob Williams, who sent me a photo copy from the September 1931 issue of "The National Greenkeeper, The Leading Journal of the World on Turf Culture and Golf Course Maintenance." It is too bad that the pictures that went along with the article could not be reproduced.



*Your Trees Deserve
the Best of Care!*

Trees are an integral part of play. They provide shade and contribute to the beauty of your course. Don't entrust their care to anyone but experts - Bartlett Tree Experts - naturally!

**BARTLETT
TREE EXPERTS**

*Caring for America's
Trees Since 1907*



Northbrook Office: (708) 559-9424

TORO®

Multi Pro 1100

This hardworking tool helps you expertly condition your bunkers for the best of play.

708-773-5555
FAX 708-773-4273



Chicago Turf & Irrigation Inc.

1170 W. Ardmore • Itasca, Illinois 60143

TORO®

Aerator 880

A walk behind a roll-type aerator designed with performance and durability in mind



- 3.5 horsepower engine
- Aerates 21,700 square feet per hour
- Exclusive kicker tab to prevent clogging
- Rubber drive, castored tires for improved stability and traction
- Two removable weight bars for better penetration into compacted areas

708-773-5555
FAX 708-773-4273

Chicago Turf & Irrigation Inc.

1170 W. Ardmore • Itasca, Illinois 60143



Upcoming Events — Mark Your Calendar

- March 5-8 — 45th Canadian Turfgrass Conference
 - March 14 — MAGCS Meeting at Oak Brook Hills Resort
 - March 24 — CDGA Green Seminar at Drury Lane, Oak Brook
 - April 17 — ITF Rinsate at Oak Brook Hills Resort
 - April 25 — MAGCS Meeting at Inverness C.C.
 - May 16 — ITF Golf Day at Silver Lake Golf Club
 - June 20 — MAGCS Meeting at Aurora C.C.
 - July 11 — MAGCS Meeting at Orchard Valley G.C.
 - August 13 — Family Picnic & Kane County Cougar Ball Game
 - August 29 — John Deere Golf Tournament
 - September 12 — MAGCS Meeting at Seven Bridges
 - September 26 — Northern Golf Day
 - October 3 — Pro/Superintendent at Glenview Club
 - October 10 — MAGCS Meeting at Oak Brook Hills C.C.
 - November 28-30 — NCTE at Pheasant Run Resort
- All meetings, starting in March 1994 will require advance paid registrations.

Am I the only one or do other people notice that Joel Purpur and John Gurke are taller these days. I'm sure they are an inch or two taller, or at least they should be, after bunge jumping off a 175' tower in Dallas.

The following golf courses are looking for a golf course superintendent:
Shamrock G.C. in Kankakee, IL; Call Larry Horrell at 815/937-9355.
Glendale G.C. in Bloomingdale, IL; Call Jim Lang at 708/250-9700.
The Oaks G.C. in Springfield, IL; Call Danny Pesch at 217/528-6600.
(The Editor has some job descriptions on file, call at 708/428-5009).

Assistant Superintendents needed at the Odyssey Golf Course. Call Ray Schei at 708/633-0363, Ray also needs an Irrigation Repair Technician.

The following are young men looking for an Assistants positions:
Kevin McCarthy, B.S. Degree in Agronomy with golf course experience. Call 515/987-5402.
Roger A. Behling, experienced in grounds maintenance, has applicator license. Call 312/878-6671.
Brian Yeager, call 219/947-7424.

All MAGCS Golf Events require golfers to have a registered handicap. MAGCS membrs may receive a handicap free of charge through the association. This is one of your memberships benefits. For more information or to sign up, contact Albie Staudt or Kevin Czerkies.

Congratulations to William White (ex-assistant to Kevin DeRoo at Bartlett) on his first Superintendent's job at Prairie Lakes G.C. in Marseilles, IL. Also congratulations to Paul Schaefer on his move and new position at Prairie Isle G.C. Paul was the Superintendent at Glendale G.C.

Mary Jones of CTI is recovering from knee surgery after a skiing accident right before Christmas. I understand that Ron is learning how to do the washing and ironing now. Notice how he is wearing all those sweaters now — you only need to press the collars.

John Meyer is back in the Chicago area again and is now working for Cannon Turf Supply. We need to get that camera back into his hands to help Ray Schmidt with the photos. Welcome back, John.

Congratulations to Scott Bartosh, Mike Bavier's assistant, who started his first Superintendent's job at the Kenosha C.C.

Wasn't that hospitality room in Dallas great? If you haven't read the President's Message, please do so to see who all contributed to make our room so spectacular. Give those vendors credit by placing an order and saying thanks. Also Janet Good was a marvelous host and needs our thanks.

There are a couple of new shops in the area now. Dave Behrmann has moved into his at Riverside G.C. and Brian Bossert hopes to be able to move into his by June at Bryn Mawr G.C. Both of these shops were long past due in coming. Dave won't know what to do without his flood drill every year.

Nadler Golf Car Sales, Inc., a leading distributor of Club Car golf cars and utility vehicles, has an immediate opening for a Sales Representative.
Our ideal candidate will need excellent communication skills. Experience related to the golf industry would be preferable. Nadler Golf Car Sales offers an excellent compensation and benefit package. We encourage qualified and interested applicants to forward their resume and salary history to:
David Nadler, Nadler Golf Car Sales, Inc., 2700 N. Farnsworth Avenue, Aurora, IL 60504.

For Sale: 1983 Ryan Greensaire II; 1986 Mott Flail Mower; Toro Spartan 5 gang mower with 2 extra units. Call Don at Forest Hills Country Club, 815/877-0845.

John Turner, Sr. Sales Representative for NOR-AM Chemical, presented two \$500.00 scholarships to Senior Chris Frank and Rod Myers from Purdue University. Both students were recognized at the MRTF/INA Green Industry Expo held in Indianapolis on January 6, 1994. The annual scholarships assist turfgrass students in meeting their educational needs and their professed interest in turfgrass management.

(continued page 18)

Midwest Breezes continued



For Sale: Older Ideal Peerless reel grinder and Foley bedknife grinder, best offer for both or will separate. (2) Toro 70 mowers in fair condition. (1) Broyhill 110 gal. sprayer w/PTO pump. Contact Don or Chuck at Timber Trails C.C., 708/246-0281.

Sales Representative: If you have 3 to 5 years experience in the golf or water management industry and want to get in on the ground floor of the introduction of an exciting new product in lake and pond management, please send your resume or call ClearLake, 900 Jorie Blvd., Suite 122, Oak Brook, IL 60521, 708/575-8040.

Are you looking for an experienced Assistant? Please call Don at 708/838-2707.

For Sale: '71 Toro Greensmaster III, completely rebuilt with set of 3 verticutting reels — \$3000. '76 Toro Groundsmaster 72", gas engine, good condition — \$3000. '72 Toro Spartan 5 gang rough unit, good condition — \$1000. Call Jim Evans, Turnberry C.C. at 815/459-8570.

For Sale: Ideal Bedknife Grinder/Dayton motor. Call Dave or Dan at the Ivanhoe Club, 708/566-9257.

ITF is sponsoring "Everything You Need to Know About Wash Water & Rinsate Pad" at the Oak Brook Hills Resort on April 7, 1994. Cost of registration will be \$35 in advance and \$50 at the door. Phone 312/201-0101 for details.

Congratulations to the new superintendent at Fresh Meadows Golf Club, Scott Sherman. Scott is looking for an assistant — call 708/449-3457.

The deepest sympathy of the members of the MAGCS is extended to the family and friends of the following: John Vondrasek, 31, an assistant superintendent at Seminole Golf Club in Florida died in a motorcycle accident on February 8. John had worked for Art Benson at Butterfield, Oscar Miles at Butler and at Pine Meadows.

S. Darrell Wesson, father of Lynn Wesson of Phillips Park Golf Club, passed away on February 19, after a long illness.

CANNON TURF SUPPLY, INC.

Dave Wollenberg

	317-845-1987 Local
	800-966-1987 Watts
Office/Warehouse	219-394-2295 Home
12840 Ford Drive	219-394-2398 Fax
Fishers, IN 46038	317-718-4282 Mobile

GOLF MAINTENANCE BUDGET BLUES?

Are your Spray Pattern Indicators costing too much money?

Switch to **SIGNAL™** and \$ave money!!

Get more color for your Spray Pattern Indicator Dollars - use **SIGNAL.**



Please call **PRECISION LABORATORIES** for stocking distributor information.

Call us at **800-323-6280**



Overseeding Fairways Tees and Greens to Control Poa Annua Problems

by Mark G. Grundman, Sr. Turf Specialist
NK Medalist

More and more golf courses are following the trend toward lowering mowing heights and allowing more play. This trend, while bringing in more revenues, seems to be allowing more and more Poa Annua encroachment in our fairways, greens and tees.

With this encroachment, are you running into more modeling effects, disease susceptibility, less drought tolerance and more mid summer die-back?

If so, overseeding on a regular basis can be your salvation.

With current studies now showing that in five year programs of overseeding, shoot density increased every year of the study. We have also found that it is desirable to use higher seeding rates with lower cutting heights. This is because lower cutting heights require more plants per square foot to maintain one hundred percent cover. The one pound of Bluegrass seeding rate per one thousand square feet, listed in most text books works well when grasses are mowed at three inches. Research now indicates that seeding rates should be doubled for every halving of cutting height. For instance, while a one pound overseeding rate might be acceptable for a three inch cut, a two pound rate will be better for a one and one half inch cut and a four pound rate for a three quarter inch mowing height. This provides the desired shoot density of the stand without the usual "Equilibration" period.

Research now indicates that seeding rates should be doubled for every halving of the cutting height.

Also, effects of Kentucky Bluegrass, Ryegrass and Bentgrass seeding rates on encroachment of Annual Bluegrass is quite profound. Using a low seeding rate or a weak cultivar will **open the door** for invasion of Annual Bluegrass. This invasion can occur simultaneously with emergence of blues, ryes and bents anytime within the first six months to a year after planting, due to a thin stand. Heavier seeding rates along with use of proper grass varieties and species in heavy Annual Bluegrass areas showed significant advances in reducing Annual Bluegrass Problems.

Ideal seeding rates to control the previous problems are:

Kentucky Bluegrass: 2-3 lbs. per 1,000 sq. ft.

Perennial Ryegrass: 4-8 lbs. per 1,000 sq. ft.

Creeping Bentgrass: 1-2 lbs. per 1,000 sq. ft.

High perennial seed counts in your soils can counteract Poa Annua problems of the future.

The days of midsummer turf loss can be over with annual overseeding programs integrated into your annual maintenance programs.



TeeTime

18-6-5
Fertilizer
with Dimension®

the professional's
partner

The 
Andersons

TeeTime

10-5-25
Fertilizer
with Dimension®

the professional's
partner

The 
Andersons

TeeTime

24-4-12
Fertilizer
with Dimension®

the professional's
partner

The 
Andersons

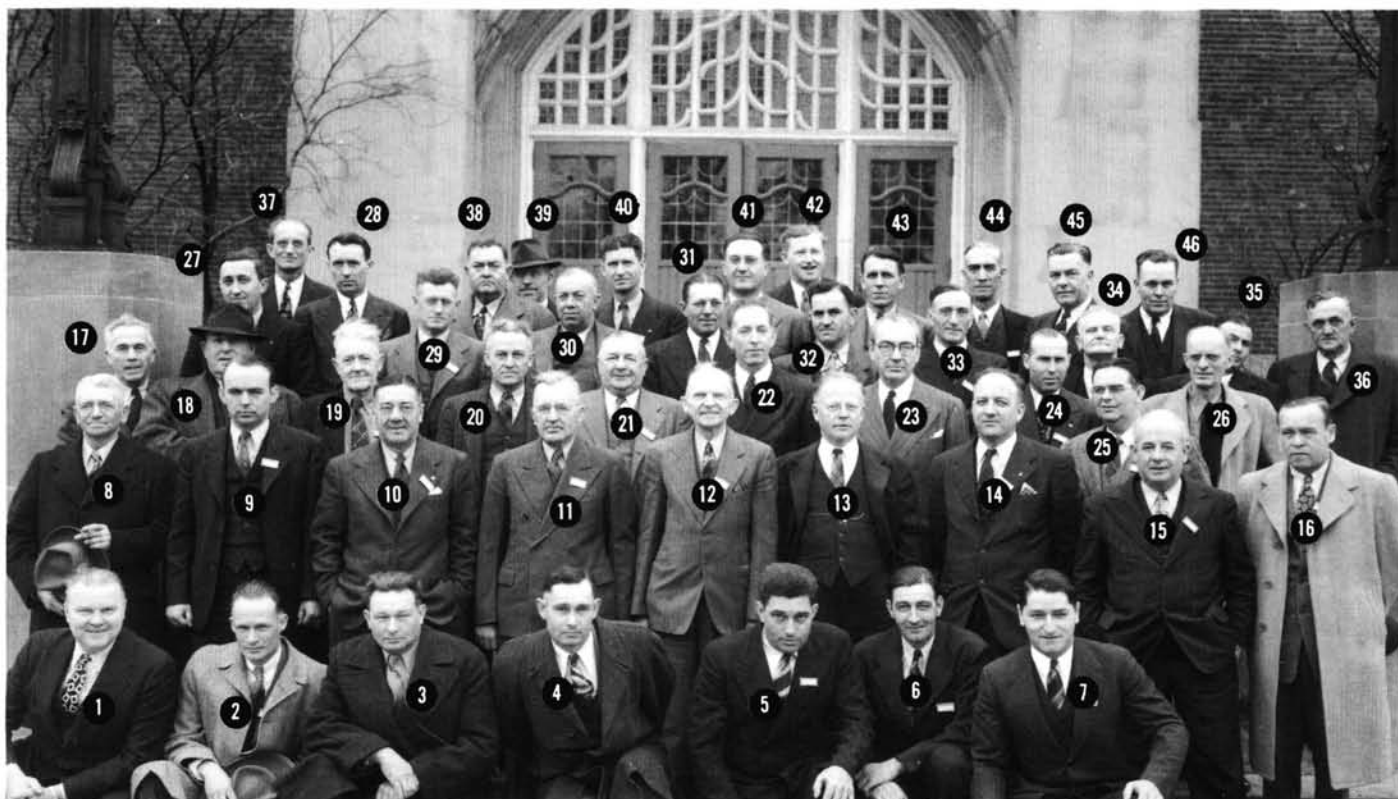
The 
Andersons

The Tough Just Got Tougher.

DIMENSION, the toughest thing since crabgrass, is one of the industry's most exciting, most talked about weed control products to ever come along. Incorporated with one of The Andersons' proven Tee Time fertilizers you can count on superior, double-duty performance in a single, effective application.

Find out more today,
contact your Tee Time
technical representative:
Brett Rush 708-654-3142

Do You Remember ... Some Guys Still Do! "1944 Midwest Conference at Purdue University"



In the January issue we had a picture of the 1944 Midwest Conference at Purdue University and I asked for names of the people in the picture. Our good friend, Dr. Bill Daniels responded from sunny Arizona with his list of names and I got a few more from other people. Here is what we have to date: #2 Bud Esterdine, Muncie, IN; #5 Gabe Rosset, Skokie C.C.; #6 Don Strand, Westmoreland G.C.; #7 Frank Dinelli, Northmoor C.C.; #9 G. D. Mott, Purdue University; #13 O. J. Noer, #16 Gerald Dearie Sr., Evanston G.C.; #17 Mert Clivett, Purdue; #23 Herb Graffis, Golfdom; #24 Pete Coval, Indianapolis; #25 John Darrah, Olympia Fields G.C.; #27 Amos Lapp, St. Andrews G.C.; #28 Ray Gerber, Glen Oak C.C.; #31 Carl Britzloff, Meridian Hills C.C.; #32 Ray Dieder; #35 Wayne Bennett, Kokomo; #37 Al Brandon; #40 Ward Cronwell; #41 Hermann Woehrle, Kankakee C.C.; #42 Bill Stupple, Exmoor C.C.; and #45 George Enfield, Agronomy at Purdue.

1994 MAGCS Hospitality Room Dallas, Texas

by A. T. Flierst

The Board of Directors and the entire membership of the Midwest Association of Golf Course Superintendents gratefully acknowledges the generous support of the MAGCS hospitality room sponsors. The sophistication and scope of the "Midwest Hospitality Room" at the convention headquarters hotel in Dallas was without parallel and reflected the very generous way in which these sponsors responded. The collective support and contributions of the sponsoring individuals, companies, and corporations provided the substantial resources necessary to fund so fine an effort. Not only do these people deserve the gratitude of the MAGCS membership; they deserve your expressions of individual gratitude and patronage as well. Without the allied participation of these generous sponsors, the Midwest would be hard pressed to provide the fine environment for social and professional activities at the yearly GCSAA conference.

The Board of Directors and the entire membership of the Midwest Association of Golf Course Superintendents wish to thank the following for their generous participation:

Arthur Clesen Inc.	Nor-Am Chemical
Illinois Lawn Equipment	J.W. Turf
Ciba-Geigy	Layne Western
Roseman Tractor	Bojo Turf
Hollebeak Excavating	Lewis Equipment
Duntelman Turf Farms	Jim Burdett
Cannon Turf Supply	Williamson Nursery
The Andersons	LESCO
Lohmann Golf Design	Midwest Golf Development
Century Rain Aide	Martin Design
Christensen Power Equipment	Turf Products Ltd.
Chicago Turf and Irrigation	Halloran and Yauch
Huber Ranch Sod Nursery	Timberline Construction
Johnson & Assoc. of Lombard	Lemont Paving Company

And let us not forget to acknowledge the Hospitality Room Committee, and the MAGCS Board of Directors for their help in handling some of the many details that are a part of such a complex function. And, of course, many thanks to Janet S. Good for her fine effort in organizing and coordinating the room, the food, the beverage, and the service at the Loews Anatole. An absolutely marvelous effort!