

Par Ex[®] introduces a family of mid-sized fertilizer grades designed to meet the needs of today's closely-mowed turf.



par ex
THE EX STANDS FOR EXCELLENCE

Par Ex[®] and IBDU[®] are registered trademarks of Vigoro Industries, Inc.

WHY MID-SIZE GRADES FOR CLOSELY-MOWED TURF?

BECAUSE fairway-sized particles are too large to apply to closely-mowed turf.

BECAUSE greens-sized products can be difficult to spread.

BECAUSE IBDU[®] is the most reliable, most consistent source of slow-release nitrogen.

For more information contact:
Tom Skinner
Specialty Products
Territory Manager
319/524-8912

ONE WAY TO IMPROVE YOUR WELL EFFICIENCY



The normal operation of any water pumping system inevitably lead to less efficient well production due to pump wear and well plugging.

At Layne-Western we have the resources and expertise to provide you with innovative solutions to keep your water pumping system operating at peak efficiency. Our complete repair and maintenance services help guard against costly breakdowns and quickly solve problems that arise.

Call the Layne professionals with over 100 years of experience in the water supply industry.



Layne-Western Company

721 West Illinois Avenue • Aurora, Illinois 60506 • 708/897-6941
229 West Indiana Avenue • Beecher, Illinois 60401 • 708/946-2244



FULL SERVICE GROUND WATER SPECIALISTS



Meadow Equipment Sales & Service, Inc.

Well Drilling Contractors / Pump Service
27 W. 021 St. Charles Road
Carol Stream, IL 60188

- Water Well Drilling
- Pump Sales and Service
- Water Well Sealing & Capping
- Complete Waterwell Systems
- Large Selection of Pumps
Line Shaft / Submersible
- Well Rehab & Chlorinations
- Maintenance Programs
- 24 Hour Emergency Service

**Authorized Sales and Service for
Leading Pump Manufacturers**

**WHEATON: (708) 231-6250
ST. CHARLES: (708) 584-6210
BENSENVILLE: (708) 766-1906**



*"Where Meadow Goes,
the Water Flows"*

(1954 continued)

- A modern irrigation system consisted of snap valves in the center of fairways and sod cups on the greens. Most golf courses used hoses and roller bases.
- Sand traps were raked by hand
- Utility vehicles were non-existent. ("Cushman's" were motor scooters in those days). Golf course workers walked from location to location if a spare tractor was not available.
- Milorganite fertilizer was very popular on golf courses
- Tersan, Semisan, Caddy and Cal-Clor were popular fungicides
- Arsenate of lead was widely used
- West Point drum type aerifiers were used on tees and traffic areas.
- Greens were spiked, drilled or forked by hand. The Greensaire, which later became the Ryan Greensaire was just beginning to be developed
- Collars and tees were often mowed with two-wheel power units called overgreens
- Lapping machines were scarce and hand cranks were common
- Bedknives were shimmed true rather than ground true.

Illinois Lawn Equipment has matured and grown during this forty-year span, and most certainly the turf industry has done the same. The average circa 1954 superintendent would have had trouble envisioning

- Riding triplex mowers on greens
 - Self-contained hydraulically driven fairway mowers
 - Computerized irrigation systems
 - Aerifying on the scale now being practiced
 - Riding trap rakes
 - Top dressing machines
 - Hydraulically driven reels that can be reversed for back lapping
 - Computerized reel grinders
- and many would be shocked by the government's control of fungicides and herbicides, both in terms of availability and use, as well as the O.S.H.A. restrictions that are in effect today. Also, today's green speed and the use of a device called the Stimpmeter (unknown in 1954) would be shocking.

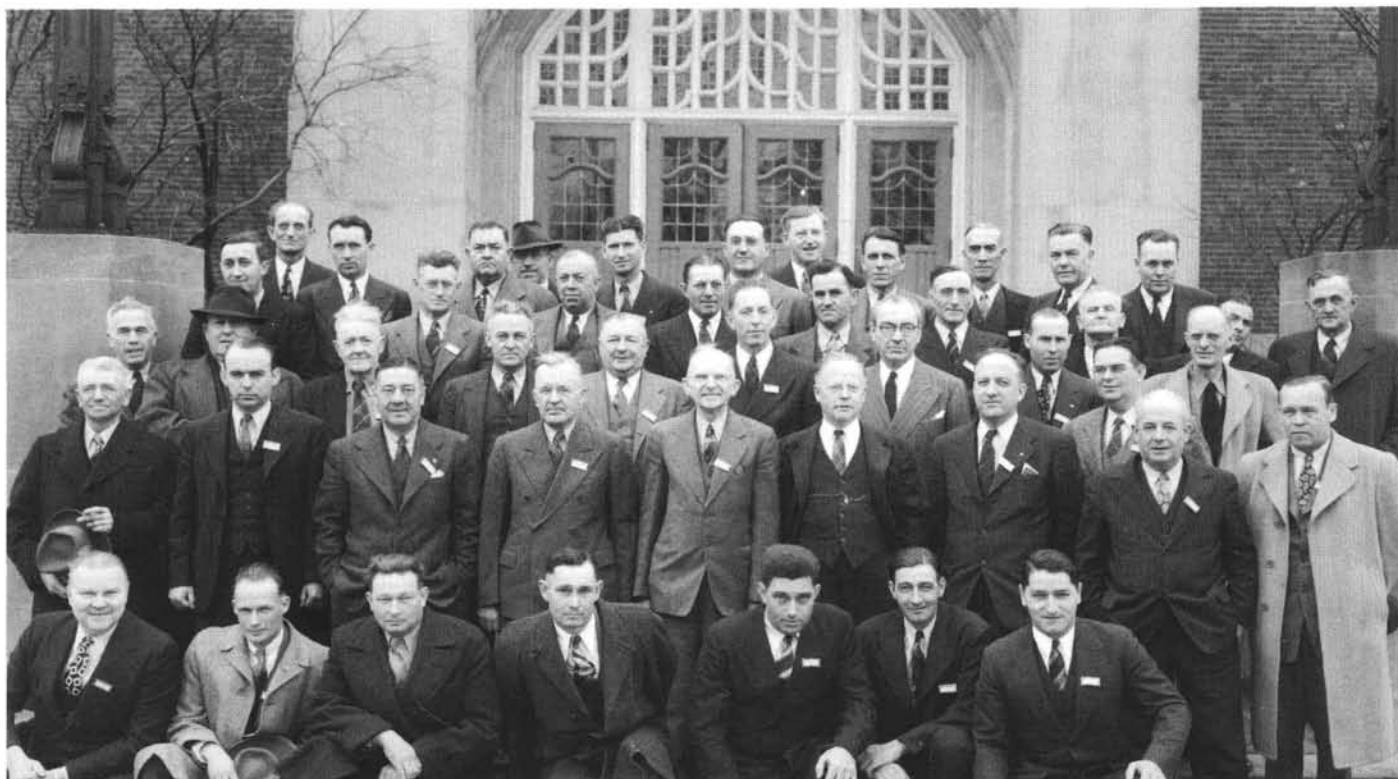
Professionalism, equipment refinement, research, and a lot of hard work have caused remarkable advances during this period of time.

Many thanks to Bob Johnson, Art Benson, Jr., Adolph Bertucci, Paul Voykin, Fred Opperman and Bob Williams for all their assistance in gathering the facts for this article. Might I say on their behalf as well as my own, the information stated in this article is as factual as our memories permit, so please allow for small inaccuracies. I wanted to use a lot of names and I did. I tried not to leave anyone out. I apologize to anyone who should have been mentioned and was not.

I would also like to thank Fred Opperman for the loan of his 1954 **Bull Sheet** file. There was so much information in there that I plan to do another article, entitled "*The 1954 Bull Sheets*". Last, but not least, on behalf of Illinois Lawn Equipment, I would like to express our appreciation to everyone for the loyalty and support that made the last forty years possible.

Do You Remember ...

“1944 Midwest Conference at Purdue University”



*Editor's comment: Can you find Amos Lapp, Ray Gerber, Bill Stupple, Frank Dinelli, and O.J. Noer?
If you recognize others, please let me know.*



Playing cards: l. to r. - Ben Kronn, Art Clesen, Sr., Frank Dinelli, Bill Stupple & Joe Canale.



Bob Miller, DuPont Co.



Dr. Fred Grau & Don Gerber



Ray Gerber

Do You Remember ...



Ben Kronn & Joe Dinelli being presented with their 25 year pins by GCSAA Director Paul Boizelle.



Dr. Fred Grau & Dr. Burt Musser, back of head of Don Gerber and John Ebel.



Back row, l. to r. — Ted Woehrl, Paul Voykin, Don Stewart, ?, Bill Brady. Front row: Roy Nelson, Don Gerber, John Ebel, Warren Bidwell.



Roy Nelson & Dr. Burt Musser



Dr. Bill Daniel



Stan Mikta, Bob Breen & Grouchy Voykin



Ben Kronn



Bill Brady



Charles Shiley

From the Editor: Most of these pictures go back to the 1970's and early 1980's. These are all photo files of your newsletter, unfortunately nearly all are undated.



Charles Wilson



Russ Reed



Andy Voykin



Charlie Rack



Albie Staudt

in the



TeeTime

**18-6-5
Fertilizer
with Dimension®**

**the professional's
partner**

The  Andersons

TeeTime

**10-5-25
Fertilizer
with Dimension®**

**the professional's
partner**

The  Andersons

TeeTime

**24-4-12
Fertilizer
with Dimension®**

**the professional's
partner**

The  Andersons

The Tough Just Got Tougher.

DIMENSION, the toughest thing since crabgrass, is one of the industry's most exciting, most talked about weed control products to ever come along. Incorporated with one of The Andersons' proven Tee Time fertilizers you can count on superior, double-duty performance in a single, effective application.

**Find out more today,
contact your Tee Time
technical representative:
Brett Rush 708-654-3142**

The  Andersons

DIMENSION is a Registered Trademark of Monsanto Company

TORO®

Groundsmaster® 455-D

A flexible 10-1/2 foot out-front mower that combines large scale productivity and durability with the agility of a trim mower.

708-773-5555
FAX 708-773-4273



Chicago

Turf & Irrigation Inc.

1170 W. Ardmore • Itasca, Illinois 60143

TORO®

Greensmaster® 1000



The Most Advanced Walk Greens Mower Ever Built

- Air-flow basket
- Exclusive loop handle
- Front-balanced weight design
- 11-bladed reel gives .166 inch clip
- All belt design eliminates oil lubrication
- Accessories include micro-cut bedknife and optional grooming reels.

708-773-5555
FAX 708-773-4273

Chicago

Turf & Irrigation Inc.

1170 W. Ardmore • Itasca, Illinois 60143



Upcoming Events — Mark Your Calendar

- January 4-7 — Midwest Greenscape Expo, Indianapolis
 - January 10 — MAGCS Monthly Meeting, Arrowhead G.C.
 - January 31-February 7 — GCSAA Conference, Dallas, TX
 - March 5-8 — 45th Canadian Turfgrass Conference
 - March 14 — MAGCS Meeting at Oak Brook Hills Resort
 - April 25 — MAGCS Meeting at Inverness C.C.
 - May 16 — ITF Golf Day at Silver Lake Golf Club
 - *June 20 — MAGCS Meeting at Aurora C.C.
 - July 11 — MAGCS Meeting at Orchard Valley G.C.
 - August 29 — John Deere Golf Tournament
 - September 12 — MAGCS Meeting at Seven Bridges
 - September 26 — Northern Golf Day
 - October 3 — Pro/Superintendent at Glenview Club
 - October 10 — MAGCS meeting at Oak Brook Hills C.C.
 - November 28-30 — NCTE at Pheasant Run Resort
- All meetings, starting in March 1994 will require advance paid registrations.

*This day may change

Joliet Country Club is looking for an Assistant Superintendent. Please send resumes to: Joliet Country Club, 1009 Spencer Rd., Joliet, IL 60433. Attn: Mark Kowaliczko, Supt. Deadline for applicants is February 28, 1994.

For Sale: 7 Gang Jac Blitzers, plus 3 spare units, excellent shape, \$4,000; Jac G-10, 1970, good shape, \$3,500; Jac Greensking 62, 1977, excellent shape, \$3,500; Cushman Truckster, good shape, short box, \$1,000 or best offer on all this. Call Sam MacKenzie, Delaware C.C., 317/282-7958.

Sprinkler Irrigation is seeking Golf Irrigation Sales and Golf Irrigation Service persons for the Chicago area. Persons experienced in golf course irrigation management and irrigation installation or operation are wanted. Send resumes care of — Stephen Eisele, CGCS, Golf Manager, Sprinkler Irrigation, 849 Westwood, Unit B, Addison, IL 60101 or call for information, 800/373-4120.

“January Lull”

The Treasure of January Lull is Semi-sleep,
 Time to fall in line with Nature's Beat.
 The Lull affords a moment to blend in Nature's way,
 Hopefully We won't regret the folly of the Day.
 So grab a Nap, enjoy the Lull, as All in Nature Do,
 Cover well, enjoy your Nap, do not catch the Flu!

Kenneth R. Zanzig

Assistant Superintendent position is available at Mt. Prospect G.C., full time salaried, excellent benefit package. Contact Fred Behnke by mail at 411 S. Maple, Mt. Prospect, IL 60056.

Cannon Turf Supply has merged with the Shafer Group of Downers Grove. The Downers Grove office is open for business.

January 3-5, 1994 is the date of the Wisconsin Turfgrass & Green Industry Expo-94. It is being held at the Holiday Inn — Madison West, Madison, WI.

Sean Freeman moved to Twin Lakes G.C. as the assistant. Sean was one of the instructors at the recent CPR course. Congratulations.

George Ott at Hillcrest C.C. is looking for an assistant. Call George at 708/540-5146.

Congratulations to Dave Blomquist on his article "To Seed or Not to Seed" which was in the November/December 1993 USGA "Green Section". Isn't it great to see what is behind those bloodshot eyes from lack of sleep from chasing a puck up and down an ice rink.

Dennis Wilson, Sunset Ridge C.C., is looking for an assistant and a mechanic. Call Dennis at 708/446-5268.

Okay guys, let's put on your thinking caps and start to put together an article for your newsletter. There aren't many articles so far for the "Ray Gerber Editorial Award" for 1994. Remember the judging period is from September through August. That means there are only 7 months left to write an article and four of those months are busy, busy, busy.

A couple of the Junior Colleges have some winter courses starting up. Harper College in Palatine, call 708/925-6857. Another is College of Lake County. Call Mark Zampardo, 708/223-6601, ext. 2320 for information on their courses.

Nick Hongisto reports that all construction on his last 9 holes has been finished till spring. All of the mix has been placed on the greens, except for the putting green. All of the greens were covered to prevent the topmix from blowing away and weed seeds from blowing onto the greens. The Network 8000 satellites need to go in yet along with the wiring and programming. The course is committed to go continuous cart paths on the 18 holes they are now playing. A Spring seeding will take place and Nick isn't to sure how he feels about that, haven't ever done that before.

Scott Thorn of Hilldale C.C. is looking for an assistant. Call 708/884-6868.

John Knulty is looking for an assistant's position. B.S. Turfgrass, has worked at various golf courses as assistant. Phone: 815/459-4486, 958 Yorkshire Lane, Crystal Lake, IL 60014.

Wanted: Jacobsen Fairway & Blitzer mowers with or without frames. Also wanted Jac F-10 Tractor. Call Ron, 815/468-3438.

A USGA Green Section Regional Conference will be held:

Thursday, March 10, 1994 — 8:00 a.m. to 4:30 p.m.
Meridian Hills Country Club
Indianapolis, Indiana

Thursday, March 24, 1994 — 8:00 a.m. to 4:30 p.m.
Best Western/SteepleGate Inn
Davenport, Iowa

The program will include varied golf-related topics of interest to Superintendents, Course Officials, Golf Professionals, etc. For more information contact:

Jim Sweeney, Manager
North-Central Regional Affairs
858 Celestial Street
Crescent Springs, KY 41017
Phone 606/331-4001
FAX 606/331-4005

Jim Latham/Bob Vavrek
USGA Green Section
11431 N. Pt. Washington
Mequon, WI 53092
414/241-8742
FAX 414/241-0974

Flowering Shrubs Can Be Forced Indoors Now

by James Fizzell

This year, spring can come early to your home. How? Just snip some branches from your flowering shrubs and force them into bloom. By now many shrubs have flower buds that are formed and ready to bloom. There has been sufficient cold weather to break dormancy and all the buds require to burst open is warmth and moisture.

This procedure is quite simple. Anyone, even apartment dwellers, can succeed with this project. Start by selecting branches loaded with flower buds. You can identify the flower buds because they are more plump and more round than leaf buds. When cutting, select branches that have curves or bends that will create interesting blooming arrangements.

Don't worry about slanting cuts or shredded stems. Ordinary cuts work fine.

Submerge the branches overnight in a deep pail or tub of water, or wrap them in a damp cloth and put them in a plastic bag for a few days. This moistening and soaking loosens the bud scales and helps them to readily fall away as the flowers expand.

After moistening operation is completed, stand the branches in a pail of water in a place where you can control the temperature. Sixty to 70° is best for the developing flowers. Although the branches will force at higher temperatures, the color, size, and keeping quality of the blooms will be reduced. For this reason, it is also best to keep the branches out of direct sun.

Generally, plants that normally bloom early are easiest to force indoors. Also the closer to the natural bloom time you cut the branches, the faster they will open.

Try some things other than the old stand-bys of forsythia and pussy willow. Red maple has beautiful, red flowers. Catkins are flowers too, so try alder, birch, or hazel. Foliage of some trees is spectacular when forced indoors. Try horse chestnut, birch or oak.

(continued page 20)

PAARLBERG CHEMICALS

featuring

- Par-Ex Fertilizer
- Lebanon Fertilizer
- Du Pont Chemicals
- Chipco Chemicals
- Daconil - Dacthal
- Bean Sprayers
- Elanco
- PBI Gordon
- All Major Turf Supplies



Quality



Value



Service

1840 E. 172nd St., So. Holland
708-474-3086 815-469-6730

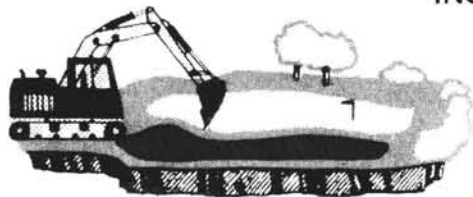
PERSONALIZED AND PROFESSIONAL LAWN AND TREE CARE SERVICES.

For tree care, hydroseeding, prairie installation or lawn care go with the professionals. McGinty Bros. Inc.! We're small enough to provide that personalized service and large enough to offer all the professional systems knowledgeable clients insist upon.

McGinty
BROS., INC.

3524 Long Grove Road
Long Grove, Illinois 60047
TEL: (708) 438-5161
FAX: (708) 438-1883

HOLLEBEAK EXCAVATING & GOLF COURSE CONSTRUCTION INC.



MIKE HOLLEBEAK
708-556-3891

BOX 103 GRANART RD.
BIG ROCK, IL 60511

**the
bruce
company**

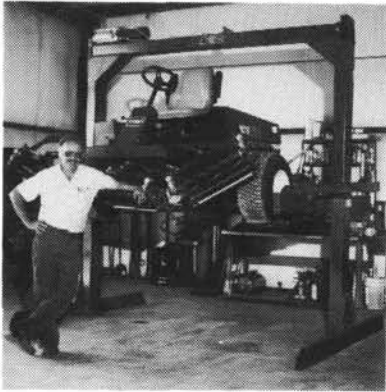
(608) 836-7041
Fax: (608) 831-4236

OF WISCONSIN, INC.

LEE BRUCE
GOLF COURSE CONSTRUCTION

2830 W. BELTLINE HWY. • P.O. BOX 330
MIDDLETON, WI 53562

**"I never want to work
without a TRION™ LIFT again!"**



"Before, it was almost impossible to see what I was doing, let alone repair it. Now everything is right where I can see it . . . sitting down!"

"I can save an hour or more a day on maintenance time."

Ed Ward
Head Mechanic, Highland Hills Municipal G.C.

**THE ONLY LIFT SPECIFICALLY DESIGNED
FOR GOLF COURSE EQUIPMENT**

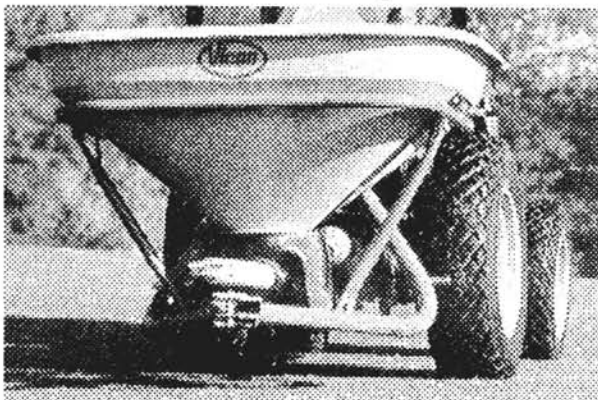
■ Several models available to lift all 3- and 4-wheel golf equipment up to 2,600 lbs.

PRICED FROM
\$3900 to \$4750
plus freight

(815) 469-8500
(708) 301-8500



**Special Low Pricing on
Vicon Seeder Spreaders!**



25% OFF ALL MODELS IN STOCK
The accurate, versatile, reliable spreaders available in sizes from 400 - 3,600 lbs.

HUBER RANCH POWER EQUIP., INC.
Box 188, Schneider, IN 46376
1-800-553-0552 or (219)552-0552

MIDWEST GREENSCAPE EXPO

JANUARY 4 - 7, 1994

**INDIANA CONVENTION CENTER
INDIANAPOLIS, IN**

SPONSORED BY

INDIANA ASSOCIATION OF NURSERYMEN

AND

MIDWEST REGIONAL TURF FOUNDATION

- EDUCATIONAL SESSIONS ON GOLF COURSE, SPORTS TURF, GENERAL GROUNDS, LAWN CARE, AND LANDSCAPE MANAGEMENT
- EXPANDED TRADE SHOW WITH OVER 300 EXHIBITORS AND EQUIPMENT ON DISPLAY

*JOIN THE OVER 2500 GREEN INDUSTRY
PROFESSIONALS EXPECTED TO ATTEND!*

CONTACT JO HORN AT (317) 494-8039 FOR
INFORMATION AND REGISTRATION



Gregory E. Martin
President

65 North River Lane
Suite 201

Geneva, Illinois 60134

708-232-9977

Landscape
Architecture

Golf Course
Architecture

Land Planning



800 West Irving Park Road
Roselle, Illinois 60193

(708) 529-2502

**CLAUSS
BROTHERS, Inc.**

GOLF COURSE
CONSTRUCTION AND RENOVATION
LARGE TREE MOVING

**REMEMBER TO WEAR
YOUR NAME BADGES
AT OUR MEETINGS.**

(Flowering Shrubs continued)

The following chart will give you an idea of how long it takes to coax flowers on branches of trees and shrubs. Start some every 2 weeks of continuous displays until spring.

Shadblow (amelanchier).....	1 week
Forsythia.....	1 week
Redbud.....	2 weeks
Pussy Willow.....	2 weeks
Privet (from an unpruned bush).....	2 weeks
Spicebush.....	2 weeks
Magnolia.....	3 weeks
Deutzia.....	3 weeks
Flowering Almond.....	3 weeks
Honeysuckle.....	3 weeks
Bridal Wreath Spirea.....	4 weeks
Flowering Almond.....	4 weeks
Flowering Quince.....	4 weeks
Lilac.....	4 weeks
Cherry.....	4 weeks
Crabapple.....	4 weeks
Pear.....	4 weeks
Peach.....	4 weeks

Snow Time Safety

by Marty Baumann

So, the ground is frozen and all the real golfers are heading south to play for the winter. You have closed your gates and put your course to bed. Now you, your assistant and your mechanic must see if once more you all can survive those long winter months locked in your cold, tiny maintenance garage without killing each other.

Well, if you spend a few minutes right now planning ahead, the only injury in your garage this winter will probably not be an accident.

Before using the tools associated with winter maintenance like grinding, lifting, rebuilding, or painting, have your mechanic check them out to be sure they still comply with all original safety standards they came with.

Sit down with everybody in your shop who will be using the equipment and go over the operation and safety practices. It's also a good idea to use this time to check out some of the items you take for granted the rest of the year. Check out your furnace, portable heaters, hot water heaters, air compressor, hydraulic lift, and all your welding equipment.

Also, I would take the time to go over all the safety procedures with your reel and bedknife grinding.

Finally, while you are buried in your office doing your budget and your bids for next year, how about setting up your safety program. Pick a topic for each month to discuss over lunch with your men. Order some new safety signs for your shop. Set up a safety contest for your crew to start in the spring.

Keep in mind that your crew will only take safety as seriously as you do. If it's a priority in your mind and in your habits, you will have a crew that works safer, and will have safe working habits for a lifetime.

Performance at the right price



Attachments include:

- Buckets.
- Pallet forks.
- Grapples.
- Backhoes.
- Trenchers.
- Earth drills.
- Tree transplanters.
- Blades.

MARTIN IMPLEMENT SALES, INC.
16400 S. 104th Ave.
Orland Park, IL 60462
(708) 349-8430



When It Comes to Turf Management ...

NOBODY KNOWS
LIKE YOUR
WILBUR-ELLIS PRO

chipco 26019 FLO

NOW AVAILABLE IN
15 GALLON RETURNABLES

- No Triple Rinsing
- No Container Disposal
- Environmentally Correct



Your one-stop shop for all turf management needs. Ask about our complete line of chemicals, fertilizers and seed.

Wilbur-Ellis...dedicated to quality, customer service and environmental stewardship.

FOR MORE INFORMATION CONTACT
Chicago Land 800/747-7400
or Central Illinois 800/892-4033



® registered or applied for Wilbur-Ellis Company 1993 WECD