

ONE WAY TO IMPROVE YOUR WELL EFFICIENCY

The normal operations of any water pumping system inevitably lead to less efficient well production due to pump wear and well plugging.

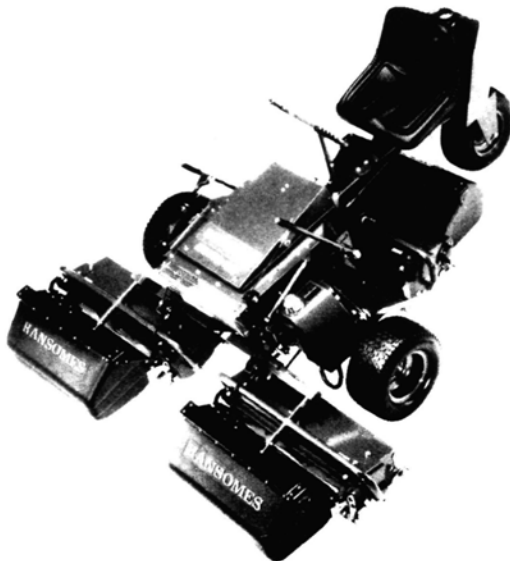
At Layne-Western we have the resources and expertise to provide you with innovative solutions to keep your water pumping system operating at peak efficiency. Our complete repair and maintenance services help guard against costly breakdowns and quickly solve problems that arise.

Call the Layne professionals with over 100 years of experience in the water supply industry.



Layne

Layne-Western Company, Inc. 721 West...



RANSOMES

The Motor 180 is versatile enough to trim golf tees and surrounds, ideal for large private and public lawns, just the machine for maintaining smaller playing fields. Its low profile design hugs the ground giving outstanding stability and performance, even on steep slopes. Instant response from the single foot pedal control for forward or reverse drive gives the ultimate in handling ability. Choice of 5 knife fixed head and 7 knife floating head cutting units lets you choose the right finish for your turf. With cutter drive completely independent of ground speed the cutting efficiency is maintained even when manoeuvring at low speed. Units latch out of work manually. Mechanical lift to units from the operator's seat and grasscatchers are optional.

Grounds for Ransomes.

ASK FOR A DEMONSTRATION NOW!

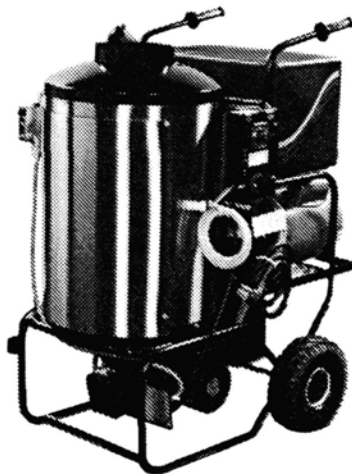
OLSEN DISTRIBUTING COMPANY

969 N. Pepper Road

Barrington, Illinois 60010

1-708-381-9333

PRESSURE WASHERS



250
to
2,000
PSI

NEW AND USED

FREE DEMO

- SALES
- SERVICE
- PARTS
- CHEMICALS

Formerly Hotsy of Chicago

CALL TOLL FREE 1-800-666-3900

*The Cleaning Equipment Specialists Since 1976**



TIM LAYDEN
General Manager

708-893-0777 • FAX (708) 893-1045

Formerly Hotsy of Chicago

1-800-666-3900

Sales Service Parts Rentals Chemicals
25 S. Park Street • Roselle, Illinois 60172

The Wily Disease Dollar Spot!

by Professors H. T. Wilkinson & R. T. Kane
University of Illinois, Urbana-Champaign

There is a storm of activity developing about the disease we all know as dollar spot. Feeding this activity is the inability to control the disease at various golf courses in the mid-west. Descriptions and remedies shot from the hip are surfacing in trade journals, but we do not feel the facts have been discovered. Let me review some of the basic facts about dollar spot and then move into methods of managing the disease.

Dollar spot is a warm season disease caused by a fungus. While the fungus can be isolated, its' exact description can not be stated because scientists have been unable to critically observe its' sexual structures. In an attempt to solve the problem, scientists are currently employing protein and DNA analyses. That being the case, it is reasonable to state that the fungus does not appear to be *Sclerotinia homoeocarpa*, but may belong to the genera *Lanzia* or *Moellerodiscus*. Is this important to you? Yes, because until we know how to exactly identify the fungus that causes dollar spot, we will not understand the variation from one location to the next. Variation leads to different behaviors among fungi, for example, different disease severity or resistance to fungicides.

We do know that the fungus lives in grass leaves (dead and alive). The spread of leaf material by machinery, water, wind and even people can move the fungus and consequently move the disease. When the air and soil temperatures are warm (15-29C) the fungus starts to grow both into and on grass leaves. If the air is very warm (20-29C) and humid, you can actually see the white mycelium on the turf associated with the dollar size spots. Be advised, dollar spot fungi are not the only organisms that can produce white threads on turf. Other non-damaging fungi, insects and mites also can create the same appearance. A little careful inspection will give you a definite assessment.

Dollar spot fungi attack the leaf tissue and cause a lesion that is characterized by a white (bleached) center and red-orange borders. Again, you can be fooled early in the season if you do not inspect the leaves carefully. Sun scald also will produce "white lesions" on leaves, but the scalded areas are **not** colored at their borders. In most turfs, dollar spot will not result in total destruction of the grass plant. Because it generally affects the leaves, the crowns, roots and rhizomes remain intact. It is for this reason that good management of dollar spot must address both the health of the turf and the suppression of the fungus.

Before addressing a program for good management of dollar spot, it would be useful to discuss the general philosophy of turfgrass disease management. Diseases are natural processes and in many respects, more so than the turf on a golf course. Both disease and grasses are indigenous to the mid-west and can exist together in balance, i.e., neither are causing major problems for the other. Disease problems arise on golf courses because the relation between grass and pathogen is imbalanced. This is unavoidable for the most part because we **want** the grass to grow as a highly altered turf. While severe disease reduces the quality of the golf course turf, it is unwise to assume that all disease should be eliminated from the golf course. For

ten years, I have encouraged golf course superintendents to **manage** disease, not attempt to eliminate it. First, eliminating a disease is nearly impossible, but more importantly, eliminating disease further imbalances the turf ecosystem and brings on bigger and more difficult problems. **To manage a disease means to keep it in balance, i.e., not allow it to cause severe destruction and not eliminate it.** To control a disease is different than managing it. Control means to focus your effort on reducing the pathogen population, and elimination is the ultimate goal. For example, the use of a fungicide is a control measure when used alone, not a management tool. In recent published, but unscientific articles, programs entirely based on the application of fungicides have been recommended for dollar spot **control**. This is the wrong approach for this or any other disease. The most important component in any disease management program is the turfgrass. Disease can not be balanced if the turf is in a poor state of health. Fungicides can be used effectively in a good management program, but **superintendents should not become “addicted” to fungicides on their golf course.** There are some excellent programs integrating cultural practices, fertility management, fungicides and even biological management that will produce superior results to a control program that depends simply on fungicides.

Dollar spot is a disease of bluegrass, bentgrass, ryegrass, fescue and some of the warm season grasses. There is little difference in genetic resistance among cultivars within each species of grass, therefore little additional disease management can be achieved by selecting one grass cultivar over another. Bluegrass and fescue are more resistant than the bentgrasses and the ryegrasses. The current effort to produce genetically resistant cultivars of bentgrass is minimal and can not be expected to change the present situation in the foreseeable future.

Disease management must occur in two phases: i) reduction or suppression of the pathogen population or activity; and ii) recovery of the diseased turf through growth. These two phases are not completely separate, but actually complement each other. Reduction of the pathogen population usually is necessary if you experience severe disease. When dollar spot is noticeable and the spots are increasing in size and number, the fungal population is very active and needs to be suppressed. There are several ways to accomplish this. Fungicides are the most familiar and generally effective control measure to achieve a *rapid suppression of pathogen activity*. Remember, they act primarily on the fungus and have limited effects on the plant. Therefore, they only accomplish one of the two phases of disease management.

The use of fungicides should be limited to curative programs, in most cases. The reason for this is the fact that the fungicides are generally fast acting (less than 7 days). Dollar spot will develop slowly at first and not result in death of the turf for months, and if your turf has good fertility, it will recover fast. There are both systemic and contact fungicides available, and both are quite effective. Which should you use? This question is less important than some other questions concerning the selection of fungicides. Systemics are purported to move in the grass plant, but how far and how long? Do they move from the leaves to the roots? No! Do they move from the tip of the leaf to the base, or vice versa? No! If you apply them today, will they move into the new tissue that is produced tomorrow? Probably not. The movement that is most likely to occur is short distance,

i.e., millimeters from the point of contact. Therefore, it is still important to get good coverage when applying systemic fungicides. Because the systemics penetrate the leaf, they last longer and this is their main attribute. Contact fungicides are simply that. They act where you put them on the leaf, and as the leaves grow the newly formed tissue is unprotected. Contacts are a little faster acting than systemics. If the dollar spot is severe and spreading rapidly, then you would reduce the fungal activity faster with a contact. If the disease is not rapidly developing, either should be effective. Another consideration is the alternation of fungicides used on a golf course. It is generally recommended that you do alternate, but also realize that every time you expose your turf to a different fungicide you create another imbalance. Is it simply enough to switch the brand of chemical or its' formulation? No! That does not satisfy the objective for switching fungicides? Is it sufficient to simply switch from a contact to a systemic fungicide? No! The objective for using alternative chemicals is to present the pathogen population in your turf with different chemicals, i.e., different molecular structures. For this reason, you must understand what is the active ingredient for each fungicide. Knowing this, you can quickly understand which are similar and which are not. But why alternate the chemicals? If you continually use the same chemical, the pathogen population will gradually adjust itself genetically, until it is less sensitive or even insensitive to that chemical. This has been generally termed fungicide resistance and is the fault of the user not the pathogen. It is important to review your entire control program, and not simply consider one disease at a time. There are many other differences between contacts and systemics that need to be considered, but this is outside the limits of this article. Generally, for the control of dollar spot, I encourage superintendents to use low rates in a curative manner, but there are other practices that should be considered as well.

The integration of fertilization and cultural practices can have a dramatic effect on managing dollar spot, and these can enhance the effectiveness of fungicides. Your turf nutrition is very important in terms of managing dollar spot. Dollar spot is a “weak-turf” disease; meaning that the more nutritionally stressed the turf is, the more severe disease will be. A nutritionally balanced turf will contract less severe dollar spot and recover from the disease faster. I can not recommend, generally, how much fertilizer to put on a course. This must be determined for each course, and possibly, for different areas on a single course. You can have both your soil and your grass leaf tissue analyzed. In addition to the general fertilization of your course, consider putting a little urea into the tank with your fungicide. Why is this a good idea? First, the turf that is attacked is probably not quite rich enough in nitrogen. Second, the nitrogen applied with the fungicide gives the plant a surge of nitrogen during the important recovery phase of disease management. Third, you will find that you can dramatically reduce the rate of fungicide used. Finally, you will also find that the turf will contract less dollar spot the next time the disease starts to develop.

Finally, much can be accomplished by integrating some simple cultural practices. Watering should be done thoroughly (deeply), as infrequently as possible and never in the late afternoon. Remember, the fungus thrives under wet, humid conditions. Promote rapid drying of the grass leaf surfaces. It is the

(cont'd. page 14)

(Dollar Spot cont'd.)

water on the leaves that absolutely is necessary for dollar spot to develop. Rapid leaf drying can be accomplished by allowing good air flow and reducing shade over the turf. Lastly, biological controls are starting to appear in research tests. The use of organic amendments has shown some encouraging results. The basis for this effect could be a combination of nutrition and microbial suppression of the dollar spot fungus. In another technical report, several different fungi, that also live in turf, have been used to reduce dollar spot disease severity. Keep your eyes open for more developments on this.

The Times, They Are A Changin!

by Don Spier

During the past fifteen years, the public's view of plant protectants has changed from a passive awareness, to an "anti-pesticide" perception. I believe that some golf course superintendents are changing their pest control programs in response to the increased environmental pressures. I also believe that further changes will be necessary, to insure that the golf course superintendent has effective management tools to work with in the future.

Basic manufacturers, such as Ciba-Geigy, are also aware of the public's views on pesticides. Most trends in our industry are now driven by environmental issues. We as manufacturers of plant protectants, believe that a pro-active stance must be taken regarding the safe, effective use of our products. Part of this pro-active stance is to provide the golf course superintendent with products, formulations, and packaging that are environmentally sound. Providing biological alternatives, is another way the basic manufacturers can be pro-active regarding environmental issues.

Products that are more active, requiring less active ingredient per acre, are becoming the norm. Flowables, dry flowables, and emulsifiable concentrates have replaced most wettable powders. Soon gels and tablets may be available. Water soluble packets, and returnable close system containers are now being used. All of these formulations and package systems meet environmental needs by providing increased worker safety, reducing rinsates, and reducing landfill solid waste. Over the next decade, a number of biological alternatives will be available to the golf course superintendent.

Many golf course superintendents are taking a "wait and see" approach to the alternatives mentioned above. Having talked to university professors and regulatory experts, I believe that the time to use these products, package systems, biologicals, and formulations is now! By using these products now, the golf course superintendent is taking a pro-active stance on the environmental issues that concern the public, and his club members. I realize that some of these alternatives require changes in application methods, and may be more costly; however, isn't one of the jobs of the golf course superintendent to make recommendations to his directors that protect their club from liability, and provide his workers with the highest possible degree of safety?

The times, they are a changin! The public has changed, the manufacturers are changing. And, the golf course superintendent should consider change.

Another Court Decision

by Dave Blomquist, Naperville C.C.

A recent court decision may cast a dark cloud over golf courses in the near future. The Supreme Court has ruled that local community decisions may overrule a federal standard for pesticide applications. This means that uninformed individuals may enact laws that seriously affect the way we manage our golf courses. Pesticides have been under scrutiny for several years now. Television and print media have wrongly blamed pesticides for everything from a simple headache to cancer. Fact: Pesticides have been used in substantial amounts for nearly 50 years, and there is no evidence from analysis of cancer patterns that pesticide residues are responsible for any cancers in adults or children.

Alar, a man-made plant growth regulator used on apples, was targeted by a group led by Meryl Streep. Their claim was that it is harmful to children when they eat treated apples. Fact: Alar caused cancer in laboratory mice only when they were given levels **four million** times greater than any human exposure.

Because uninformed groups are affecting law makers, the cost of getting a potential pesticide to market is skyrocketing. NCC spends \$30,000+ annually to protect the turf from fungus and insects. That cost goes up each year. Many materials that were in use on a regular basis have been banned making it much more expensive and difficult to maintain your golf course. If this irresponsible lobbying continues, the game as we know it today will change as there is no way we can provide the conditions we now have without pesticides.

If there are any questions or comments about this issue, please feel free to call me at 355-9807. I would love to discuss this with you.

Editor's comment: (Dave Blomquist wrote this article for his club's monthly newsletter).

Earthworms

Earthworms (*Annelida* and *Oligochaeta*) are perhaps the best known of soil macroorganisms. Again, depending on how favorable soil conditions are, there may be as many as 70,000 per 1000 square feet of root zone. Frequent counts of 20 earthworm casts per square foot in the spring are noted. Ten earthworms per cubic foot of soil can have a favorable influence on soil conditions.

Earthworm casts in a years time may amount to as much as 40 pounds of soil deposited on the surface for each 1000 square foot of root zone. These casts are greatly enriched in comparison with the surrounding soil. For example, the nitrate content of casts can be increased by over 300 percent; the phosphorus content may be increased by over 600 percent and the potassium content by over 1000 percent. Calcium and magnesium increases are usually less; i.e., 40 percent for calcium and 200 for magnesium. These increases in plant nutrients come about through the ingestion of soil by the worm. It conditions the soil as it passes through its system, thus bringing about this enrichment.

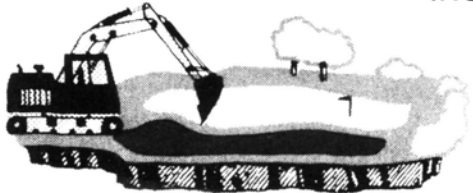
KOELPER BROS.

Golf Course Building and Remodeling
444 E. Mors Avenue
Wheeling, Illinois 60090

708-438-7881
DANIEL I. KOELPER

708-541-9182
VICTOR C. KOELPER

HOLLEMBEAK EXCAVATING & GOLF COURSE CONSTRUCTION INC.



MIKE HOLLEMBEAK
708-556-3891

Box 103 GRANART RD.
BIG ROCK, IL 60511

**the
bruce
company**

(608) 836-7041

OF WISCONSIN, INC.

LEE BRUCE
GOLF COURSE CONSTRUCTION

2830 W. BELTLINE HWY. • P.O. BOX 330
MIDDLETON, WI 53562

JAMES R. BURDETT

Grounds Maintenance Supplies



2835 S. State St.
Lockport, IL 60411
815/740-5656
Car Phone 710-5656
Fax 815/723-4485

ACCURATE TANK TESTING

Warrenville, Illinois

- Underground Tank Testing
- Underfilled (In-Tank) or overfilled methods
- Prompt/professional service

Certified • Registered • Insured

Underground tank testing to assure you're not leaking
for: Insurance, Real Estate, or Regulatory needs.

(708) 393-1998
(800) 773-TANK

Build your Pythium control program on a firm foundation. Chipco® Alette®



RHÔNE-POULENC AG COMPANY

P. O. Box 12014, 2 T. W. Alexander Drive
Research Triangle Park, NC 27709
919/549-2000

TORO[®]

Reelmaster[®] 223-D

The lightweight fairway mower with fully interchangeable cutting units.



Variable Reel Speed Control matches the reel speed to your desired height of cut and mowing speed.

708-773-5555
FAX 708-773-4273

Chicago
Turf & Irrigation Inc.

1170 W. Ardmore • Itasca, Illinois 60143

TORO[®]

Fairway Aerator

Now you can aerate 61,000 square feet an hour at speeds up to 2.2mph with exceptional hole quality, plus adjustable coring depth control.



Chicago
Turf & Irrigation Inc.

708-773-5555
FAX 708-773-4273

1170 W. Ardmore • Itasca, Illinois 60143

Midwest Breezes



Upcoming Events — Mark Your Calendar

May 4 — Combined Golf Day at Rock Island Arsenal G.C. and Short Hills C.C. in the Quad City area.

May 6 — Joint meeting of Managers and Superintendents at River Forest C.C.

June 22 — MAGCS monthly meeting, Flossmoor C.C.

June 29-July 5 — Western Open at Cog Hill

July 13 — MAGCS monthly meeting, Briar Ridge C.C.

August 5 — ILCA Field Day at Chicago Botanic Garden

August 10 — MAGCS monthly meeting, Mt. Prospect C.C.

August 17 — John Deere Tournament at Crystal Lake C.C.

September 21 — MAGCS monthly meeting, Big Foot C.C.

October 12 — MAGCS monthly meeting, Settlers Hill G.C.

November 18 — MAGCS Clinic, location to be announced later

November 30-Dec. 1 & 2 — NCTE at Pheasant Run Resort

January 23-30, 1993 — GCSAA Conference & Show, Anaheim, CA

NECROLOGY

The deepest sympathy of the members of the MAGCS is extended to the Scott family on the passing away of their father, Richard, on March 10. Richard was a avid golfer, a wonderful father of 5 children, 3 of whom are golf course superintendents in the Quad City area, Scott at Short Hills C.C., Jon at the Rock Island Arsenal and Jamie at Oak View.

Our sympathy is also extended to Tim and Pat Kelly and their families on the death of their mother on April 9.

For Sale: 1989 Jacobson 71" Bank Mower, Diesel engine. Call Shawn at Oak Brook G.C., 708/990-1753.

For Sale: 1990 Ransomes 213D Triplex, 234 hrs., 2 sets of heads (5 & 10 blade reels) - \$12,000. 2-1990 Ransomes 4850 (48" walk) behind mowers, \$1500 each. 1990 Toro Sandpro 14, 600 hrs. - \$3000. 1985 Daco Sodcutter - \$200.00. Call Scott at Rich Harvest Links, 708/466-7610.

Tony Meyer had a 5 way by-pass surgery on March 19. Tony is doing well and would welcome phone calls - 708/969-1898.

Carl Hopphan also underwent surgery for "cleaning of the tubes" as Carl put it on April 21. Give Carl a call to wish him a speedy recovery also.



Mike Bavier & Dudley Smith — board members of the Musser Foundation accepting a \$1,000 check from President Ray Schmitz

SUPPORT YOUR ADVERTISERS

Superintendent Position Open - Call Ron Senica, 815/223-2648. New golf course just getting under construction at Utica, Illinois. The course "Senica Oak Golf Club" will be an 18 hole residential layout.

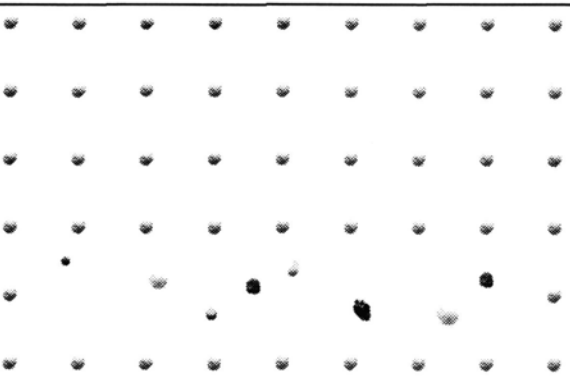
Don Virgens is retiring from Schroeders Nursery the end of May. Don started with Dick Schroeder and his father back in 1969 after being in the propane business. He came on to manage the operation and was promoted to General Manager in the early 80's and then Vice President, the position he holds today. Don is going to retire to Milborn, Arkansas and do some traveling. He has a fishing trip scheduled to Canada in early June and then he and his wife will tour Alaska for the rest of the summer. Don has helped many golf course superintendents (me included) on what to plant and when. His practical knowledge and visits to the courses will be missed. Don — ENJOY!

Terry Dillner is looking for an assistant at Woodmar C.C. Call him at 219/844-0585.

Eric Andale is looking for an assistant's position. Call him at 815/399-3461.

The Illinois Turfgrass Foundation Dream Golf Week event has been launched! On April 8th the ITF released details of its Dream Golf Raffle through full page newspaper advertising as well as press releases to magazines TV and radio stations.

250 posters with registration forms are being distributed to ITF members to hang in their pro shops and locker rooms. If you are not contacted and would like to get a poster, please call Jack Lagershausen, Executive Director at 312/616-0800. We appreciate your help!



UNFORTUNATELY, BLENDS JUST CAN'T MATCH OUR GREENS GRADES.

When it comes to consistent results and predictable growth, blends just can't equal the performance of our homogeneous greens grades fertilizers.

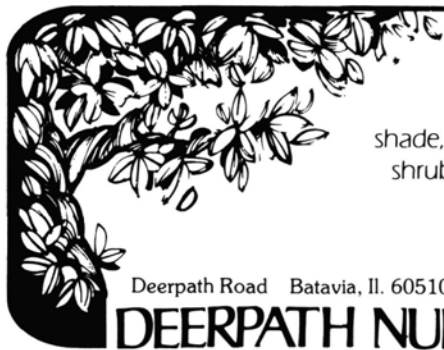
We have five premium greens grades to choose from. Country Club® 18-4-10, 18-3-12, 18-0-18, 8-4-24 and 10-18-18. All which are ideal for fairways as well as greens.

So call your local Lebanon distributor or 1-800-233-0628 for more information.

**Country Club
Greens Grades** LEBANON


© 1992 Lebanon Turf Products Country Club® is the Registered Trademark of Lebanon Chemical Corporation.

Territory Account Manager:
Brian McGuffin
Homewood, IL
(708) 957-7954



Selected varieties of shade, ornamental trees, shrubs and evergreens.

Deerpath Road Batavia, Il. 60510 708/879-0120
DEERPATH NURSERIES



ACRES ENTERPRISES

**HYDRO-SEEDING
HYDRO-MULCHING**

610 W. Liberty St.
Wauconda, IL 60084

Bus (708) 526-4574
Fax (708) 526-4580



Lake Shore Sand
A Division of Construction Aggregates Corporation of Michigan

**TDS 2150
TOPDRESSING SAND**



USA Sieve	MM	%Retained
20	.84	.0
30	.60	.7
40	.42	6.9
50	.30	27.3
60	.25	23.2
70	.21	24.5
100	.15	17.0
140	.10	.4
200	.07	.0
270	.05	.0
PAN		

**Wisconsin's
Largest
Topdressing
Sand
Supplier**

Lake Shore Sand
P.O. Box 1213
Milwaukee, Wisconsin 53201
(414) 271-0625

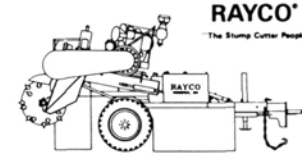
AERIAL MEETS YOUR NEEDS
EQUIPMENT, INC.

SERVICE • PARTS • SALES

STIHL

ECHO
THE RIGHT TOOL!



RAYCO
The Stump Cutter People

ARBORIST & SAFETY SUPPLIES

SERVICE & PARTS FOR MAJOR BRANDS OF:

AERIAL EQUIPMENT, INC.
2381 South Foster Avenue
Wheeling, Illinois 60090
(708) 398-0620

- Chippers
- Stump Cutters
- Aerial Trucks
- Spray Rigs
- Dump Bodies
- Chain Saws

Getting to Know Your Fellow Members

by John Meyer

Spring is finally here. The greens are green again (second time this Spring), the trees are budding out and Wrigley Field is filled to capacity.

I don't know if the Cubs will win the pennant this year but I do know of one fan that will be pulling for them every step of the way. Don Ferreri, born and raised in Naperville, born and raised a Cub Fan. In visiting with Don, he mentioned that in his family you either followed the Cubs or you followed the Cubs.



The Naperville North graduate went to Joliet Junior College to study turf. I did not ask Don, but I imagine what he did not learn there, he learned from Art Benson at Butterfield Country Club. Don was Assistant Superintendent at Butterfield for seven years until April of 1987.

In April of 1987 Don was hired by Forest City-Harris Group as superintendent for the company's new Seven Bridges Golf Course in Woodridge. The company had purchased the 60 year old, 36 hole Woodridge Golf Course as part of a 395 acre site. Construction of the new course was to begin in June of 1987 but was halted before it even began.

The Du Page County Forest Preserve District filed a condemnation suit against the property, which led to more than two years of negotiating with the Village, County, and the Illinois Department of Transportation.



Don kept the old courses intact and operational until the negotiations were through and finally got to break ground in June of 1989. The biggest challenge Don faced was a goal he set himself, "that when the course opened for play, that it would have that well established look."

The greens, tees, and fairways were easy because they had irrigation. But the rough mounds were a challenge. Don brought water to the mounds by relocating and adding quick couplers. This ensured adequate moisture during germination and that well established look Don wanted to achieve.

Don has established himself, his bride, Geri, and their three children, Brenda, Bridget, and Brittany in Naperville. I wonder if they have ever heard HOLY COW!! in that household?

Geese = Poa Annua

by Michel P. Etchemendy, Asst. Supt.
Butler National Golf Club

We all know that Poa Annua invasion is traditionally a result of several factors: poor drainage, compaction, high phosphorous and nitrogen rates and movement of seeds by equipment and grass clippings. On our golf course, and perhaps yours, there are several greens that have substantially more Poa Annua, but they drain well, have no compaction problem due to light play, aerification and hand mowing, and are treated culturally, the same as the rest of the greens. Why do these greens have so much Poa Annua?

This spring while preparing greens for opening day, I noticed something very interesting. The greens with more Poa also have many more goose droppings. I believe there is a direct correlation. The geese seem to like eating Poa Annua and it's seeds, and even scratch down into the soil on some patches of Poa. They then deposit the seeds with an organic fertilizer and an insulator or cover to make conditions perfect for germination on those warm days of early spring. Who hasn't removed the goose droppings from their greens and found the grass below long and lush.

So what can be done? There are several options, fence the affected greens so the geese can't walk on to the green. I don't think they will land inside the fence due to the length of the runway. The use of growth covers may also discourage the geese from using the green, or perhaps some other repellents would be effective.

I don't have any university studies, or scientific proof to substantiate my theory. It was simply an observation but maybe you will find it useful and something to consider.

SUPPORT YOUR ADVERTISERS!

BROOKSIDE SOIL TESTING

and

IRRIGATION WATER ANALYSIS

includes a complete report, and recommendations for producing quality turf on golf courses.

ADVANTAGES:

- Improves the environment of the grasses and eliminates turf diseases
- Decreases expenses for pesticides
- Reduces thatch and eliminates fairway renovation
- Decreases expenses for costly fertilizers
- Healthy turf attracts more golfers and increases income

Contact: Golf course specialists since 1964

V. J. Zolman and Son

8516 Brookfield Ave.
Brookfield, IL 60513

708-387-7782
312-461-3679

1992 Annual Gin Classic

by Paul Voykin

This fun charity event again was held at Hackney's Restaurant in Wheeling. Nearly \$1,000 was raised and handed over to the Merryville Academy for Boys in Des Plaines.

The new Gin Champion is Dick "The Phader" Baker who in a very exciting game, according to witnesses, beat Kenny "Lucky Cap" Goodman. Kenny, in the semi-finals beat Dudley "Doodles" Smith. Last year's brilliant champion, Dave "The Quake" Meyer was vanquished quickly by a rookie who never played gin in his life. Other notable features of the event were Peter "The Bye" Voykin, co-chairman of the event and two time Gin Champion, after three lucky byes couldn't get bye in to the semi-finals. Also, co-chairman, John "The Bear" Beraducci was beat by "Doodles" Dudley Smith in the most bizarre game ever witnessed when both players actually fell asleep. Another interesting and astonishing event happened when Mike "The Neck" Bavier "open-hearted" "Luck Cap" Goodman only to lose to Goodman's open-hand after each player drew a record of 20 cards. Just one thing more. Jay Durham the third, first time rookie played spectacularly in our Gin Tournament. Rumor has it that Dudley "Doodles" Smith has been coaching Jay the third (and losing to him) the past few months. Like they say at the race track, "watch out for this maiden, next time up".

Thanks to everyone who participated and to all those who promised to be there and couldn't make it. Please send your checks to Johnny the Bear. It goes to a very needy cause.



SERVICE!
ON TIME, EVERYTIME.

QUALITY!
5-WAY BLEND OF ELITE KENTUCKY BLUEGRASSES, GROWN ON MINERAL SOIL. NO SOD HARVESTED BEFORE 18 MONTHS.

PRICE!
TOP OF THE LINE SERVICE AND QUALITY AND A TERRIFIC BOTTOM LINE. CALL FOR A QUOTE.

708-557-2900
46W340 Main St.
Kaneville, IL 60144
ON MAIN ST., 11 MILES WEST OF BATAVIA



MARYVILLE CITY OF YOUTH

1150 North River Road
Des Plaines, Illinois 60016
708/824-6126 • 708/824-7190 Fax



Maryville City of Youth
Des Plaines, Illinois

April 7, 1992

Columbus/Maryville
Chicago, Illinois

The Bull Sheet
Mr. Fred Opperman, G.G.C.S.D.

Farm Campus
Dorand, Illinois

810 Greenwood Avenue
Carpentersville, Illinois 60110

Dear Fred,

Paulina Home
Chicago, Illinois

My purpose in writing to you today is one of heartfelt thanks! I refer, of course, to the generosity extended to the children of our Maryville family as a result of the annual gin tournament at the Hackney's Restaurant in Wheeling.

Herrick Home
Hartlet, Illinois

The gifts, totalling \$815.00 are being put to excellent use in our work of caring for children who have come to us in desperate need, children who have been abused, neglected and abandoned.

Maywood Home
Maywood, Illinois

Sheridan Home
Chicago, Illinois

It's sad but true that each year the number of children being abandoned and abused continues to grow and, of course, so does our task of providing the kind of care they need and deserve. With that in mind, you can understand our heartfelt gratitude for the wonderful support you have sent our way. Truly, Fred, it is the help of good people such as you and your fellow-members that makes it all work.

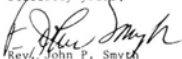
Virginia Home
Chicago, Illinois

Parenting Teen Center
Chicago, Illinois

Wishing you and all who participated in this beautiful endeavor God's special blessings, I remain

Haymarket/Maryville
Chicago, Illinois

Sincerely yours,


Rev. John P. Smyth
Executive Director

Camping Programs
Pottawater Bay, Illinois
Eagle River, Wisconsin

Board of Directors

Joseph J. Stevens
Vice President

Eugene A. Bradke
Secretary

Timothy J. Hrenshah
Thomas J. Mcagher
William J. O'Rourke
Sen. Philip J. Rock

George W. Rourke
John C. Stevens
Thomas M. Tully

Rev. John P. Smyth
Executive Director

Don L. Terno
Rev. David F. Ryan
AMERICAN EXECUTIVE DIRECTOR

John P. Madden
President

Edward J. Rock
Treasurer

Save \$\$\$ On Our 1991 Used Equipment...

	Sale Price	Original Price
Pedestrian Verti-Drain (walk behind)	\$ 6,550.00	\$ 8,795.00
105.145 Verti-Drain	13,500.00	17,850.00
105.145 Verti-Drain	15,850.00	17,850.00
White 37 H.P. 4 W.D. Tractor	7,500.00	13,996.00
*White 37 H.P. 2 W.D. Tractor	10,500.00	12,643.00
*Landini 45 H.P. 2 W.D. Tractor	13,950.00	16,250.00
*Kubota 47 H.P. 4030 S.U. 2 W.D.	11,500.00	15,579.00

* Power Train Warranty

All tractors have creeper gears, independent P.T.O., front end weights and turf tires for use with Verti-Drain.

Special billings available. Call for details.

**NOW BOOKING SPRING CONTRACTING.
CALL FOR DATES!**

COMMERCIAL TURF

CONTRACTING & SALES

BRYAN WOOD

**YOUR ONLY AUTHORIZED DISTRIBUTOR FOR
VERTI-DRAIN® - VERTI®SEED
AERA-vator**

**SERVING
MO, KS, IA, NE, IL**

800-748-7497