

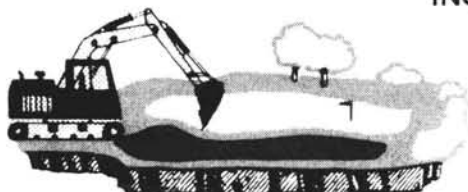
KOELPER BROS.

Golf Course Building and Remodeling
444 E. Mors Avenue
Wheeling, Illinois 60090

708-438-7881
DANIEL I. KOELPER

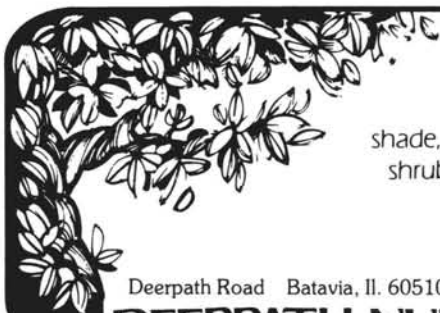
708-541-9182
VICTOR C. KOELPER

HOLLEMBEAK EXCAVATING & GOLF COURSE CONSTRUCTION INC.



MIKE HOLLEMBEAK
708-556-3891

BOX 103 GRANART RD.
BIG ROCK, IL 60511



Selected
varieties of
shade, ornamental trees,
shrubs and evergreens.

Deerpath Road Batavia, IL 60510 708/879-0120

DEERPATH NURSERIES

*Specializing in Bedding Plants
Large Variety Fall Mums*

ANTON'S Greenhouses & Garden Centers

Rick & Bob Anton
ANTON'S OF KENOSHA
9140 Cooper Rd. (51st Ave.)
Kenosha, WI 53142
414/694-2666

Gary Anton
ANTON'S OF EVANSTON
1126 Pitner Avenue
Evanston, IL 60202
708/864-1134



LINKS, LTD.

*Golf Course Maintenance Contractors
Specializing in Water Injection Cultivation*

CURT ADAMS
(708) 403-3500

9114 W. 140th St.
Orland Park, IL 60462

Build your Pythium control program on a firm foundation. Chipco® Aliette®



 **RHÔNE-POULENC AG COMPANY**

P.O. Box 12014, 2 T. W. Alexander Drive
Research Triangle Park, NC 27709
919/549-2000

Mr. Dennis D. Lyon, CGCS
Chairman, GCSAA Nominating Committee
Golf Course Superintendents Association of America
1421 Research Park Drive
Lawrence, KS 66049-3859

Dear Dennis,

The Midwest Association of Golf Course Superintendents proudly endorses and supports Bruce R. Williams, CGCS, in his professional endeavors. It is, therefore, with great pride and honor that the entire membership of the Midwest submits the name of Bruce R. Williams, CGCS, for nomination to the elected office of GCSAA Director.

Bruce R. Williams, CGCS, has shown, through countless examples, the leadership capabilities and commitment so critical to the effective management of any professional organization. As a continuing participant in the current direction of GCSAA, Bruce will bring the expertise and dedication that is demanded of such a viable, important, and visible position. Whether the position be Golf Course Superintendent, Seminar Instructor, Board Member, or advisor to his peers, Bruce continually strives to uplift and improve the position and professional image of the golf course superintendent. Bruce is without peer in his commitment to the advancement of the education and credibility of the profession. There is no better candidate than Bruce R. Williams for the office of GCSAA Director.

Respectfully submitted,

Alan T. Fierst

Director, Midwest Assn. of Golf Course Superintendents



Cooperative Extension Service

College of Agriculture

University of Illinois at Urbana-Champaign

Office of Agricultural Entomology
172 Natural Resources Building
607 East Peabody Drive
Champaign, IL 61820
June 21, 1991

Fred D. Opperman, Editor
The Bull Sheet
810 Greenwood Avenue
Carpentersville, IL 60110

Dear Fred:

As always I enjoyed the May issue of the "Bull Sheet" except for the sad news that Ed Wollenberg had passed away. You and I, as well as many others lost a great friend.

For what it is worth, I say, "Keep the Bull Sheet!" Your late night editorial was very enlightening. I was truly flattered to be included with some of the great people of turfgrass science.

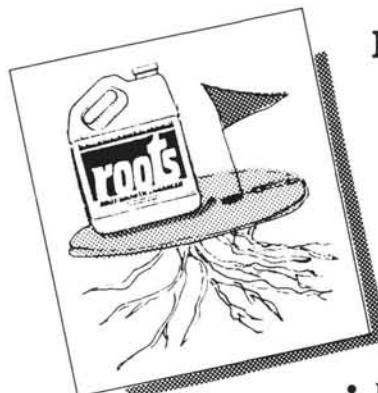
Finally, on August 31, 1991, I will officially retire from the University of Illinois after 35+ years in their employment. It has been a great trip. The membership of the Midwest Association of Golf Course Superintendents have always been one of the most cooperative organizations I have been associated with during the past 25 years. I too could list many names beginning with Ray Gerber, then to all the rest including the Meyers, Williams, Smith, Stewart, Bavier, Leuzinger, Benson, etc. What a great group - MAGCS! Continue to help each other.

Marj and I will be at Pheasant Run at the NCTE in early December. We will continue to live in Urbana at 2208 South Vine (just keep coming south through Urbana on Rt. 45). Stop by as the coffee pot will be on and surely there will be a cookie or two. Thanks again for the great support and friendship from you Fred, and all the other members of MAGCS.

Very truly yours,

Roscoe Randall
Roscoe Randall
Extension Entomologist
217/333-6650

**Because
LAKE-COOK ^{FS}
Knows...** The Answer to Strong Turf
Growth Lies Beneath the Surface,
They Recommend -



**Roots™
Root Growth
Enhancer**

The **Natural,
Soluble,
Organic
Biostimulant**

*Easily mixed and
applied to soil
and foliage
-Roots-*

- Increases Water and Nutrient Uptake
- Strengthens Sod and New Seeding
- Improves Root Stress Tolerance

—to order call—

The Single Source for Professional Turf Management

**LAKE-COOK ^{FS}
SPECIALTY PRODUCTS**

Wauconda 27310 W. Case Rd. (708) 526-0007	Tinley Park 6730 South St. (708) 532-4723	Lake Villa 170 Cedar Ave. (708) 356-9600
--	--	---

Ford Iron is here!



Better tractor loader backhoes are here—
the Ford C Series.

- More powerful hydraulics with 6,000 pounds of lift capacity and 12,000 pounds of breakout force.
- Deeper-digging backhoes with XTRA-VATOR™ extendable dipperstick.
- Deluxe noise-absorbing cabs with dual entry/exit, adjustable swing-around suspension seat, all-around visibility and right-hand instrument console.
- Ford quality and service/parts backup.

See the rigs that are born to dig—today!



**HUBER RANCH
POWER EQUIP!**

Rt. 41, Box 188, Schneider, IN
1-800-553-0552

THIS FORM OR A PHOTO COPY OF IT MUST BE SENT IN TO PARTICIPATE IN THE 1991 ANNUAL GOLF TOURNAMENT

1991 M.A.G.C.S Annual Tournament Entry/Registration

Date: September 16, 1991

Place: Ridgemoor Country Club

Time: 12:00 Shotgun start

Event: Flighted according to handicap. Prizes in each flight.

You must return the entry below to enter. Entry must be received by Saturday, September 14. Allow 2 days for delivery. Mail by Thursday, September 12.

You must pre-register to participate in the tournament. If you show up the day of the event, you will be placed if there are openings to play but **you will not be eligible for prizes.**

***** To qualify to participate you must: *****

1. Have attended at least 2 meetings this summer.
2. Have an established CDGA handicap through our association or your club.

No fees are required to be paid when this entry is returned. All fees will be paid on the day of the event.

The reasons for this pre-registration are as follows:

1. Since this is our annual championship, we are going to conduct it as a tournament. You will be paired with players in your flight with similar handicaps. To do this, we need the entries in advance to arrange pairings.
2. Pre-registration will help us in other areas of pre-event preparations.

Return the entry below to Kerry Blatteau, Grounds Supt., Woodmar Country Club, 1818 177th St., Hammond, IN 46324.

M.A.G.C.S 1991 Annual Tournament Entry/Registration

Name _____

Membership Class _____

Handicap _____

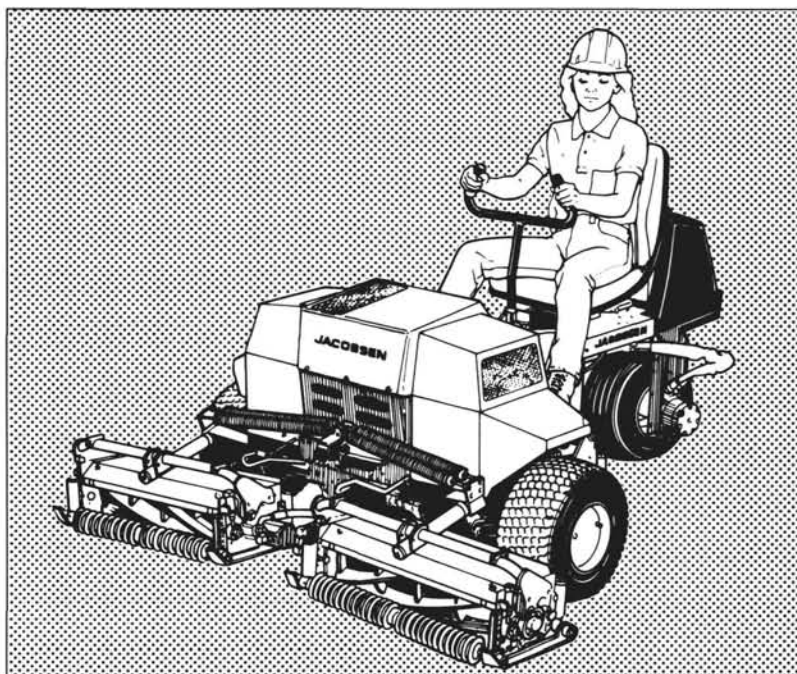
I have been to the previous two M.A.G.C.S meetings listed below

1. _____
2. _____



JACOBSEN **TEXTRON**

Jacobsen Division of Textron Inc.



Tri-King Family

Your Options:

- 71" or 84" width of cut, 12" overhang on the 84"
- 16 hp air-cooled Kohler or water-cooled Kubota diesel
- Belt or hydraulic drive reels
- 2 or 3 Wheel drive
- Fixed or quick height of cut adjusters
- Grooved or solid rollers, catchers available

708/349-8484
FAX 708/349-7149

16450 S. 104th Avenue
Orland Park, Illinois 60462

*Let us show you a
Tri-King today!*



1954

Technology

Backed

By

Tradition

1991

708/349-8484
FAX 708/349-7149

16450 S. 104th Avenue
Orland Park, Illinois 60462

illinois lawn equipment inc.

Midwest Breezes



Upcoming Events — Mark Your Calendar

August 12 — MAGCS monthly meeting at Woodmar C.C.

August 15 — University of Illinois Field Day at Urbana

August 22-25 — LPGA Sun Times Shootout at Oak Brook Club

September — MAGCS monthly meeting at Ridgemoor C.C.

October — MAGCS monthly meeting at Biltmore C.C.

October 7 — ITF Northern Illinois Golf Day at Stonebridge C.C. and White Eagle C.C.

November 6 — Midwest Clinic at Medinah C.C.

December 2-6 — "Your Home Turf" Michigan State U.
Contact Dr. Frank Rossi, 517/353-0860.

December 3-5 — NCTE at Pheasant Run Resort

January 1992 — Arrowhead Golf Club

January 16-18 — Mid-Am Trade Show-Hyatt Regency Chicago

January 20-22 — MRTF Conference & Show, Indianapolis Convention Center

January 20-22 — 62nd Annual Michigan Turfgrass Conference.
Contact Mike Saffel, 517/353-9022.

February 10-17 — GCSAA Conference in New Orleans

April 1992 — Geneva Golf Club

June 22, 1992 — River Forest Golf Club

July 13, 1992 — Briar Ridge Golf Club

August 1992 — Mt. Prospect Golf Club

October 1992 — Settlers Hill Golf Club

The John Deere Team Championship will be held on August 19, 1991 at Boulder Ridge Country Club, Lake in the Hills, IL. Shotgun starts are at 8:30 a.m. and 1:30 p.m. For further details call J. W. Turf at 708/683-4653.

The 1991 Michigan State University Turfgrass Field Day, Trade Show, and Equipment Auction will be held on Thursday, August 22, 1991 at the Hancock Turfgrass Research Center on the Michigan State University campus. The Field Day begins with registration at 8:30 A.M. and the field tour at 9:15 A.M. At 11:00 A.M. the trade show opens, and lunch is served at noon. Following the Trade Show an auction of new and used equipment is held at 2:00 P.M. This year we are instituting a new pricing policy. Advance registration for the tour will be \$10.00 and includes lunch. Registering at the field day will cost \$15.00. If you are not on our regular mailing list please contact Dr. Bruce Branham, Michigan State University, Dept. of Crop and Soil Sciences, E. Lansing, MI, 48824 for a copy of the field day brochure.

Since last month, there has been a turn of events for Ed Stewart. On July 2nd Ed had to have his other leg removed just above the knee. Complications set in that required this drastic surgery. Please drop Ed a "get well card" at the following address: Lake Wildwood, 228 Winter Have Dr., Varna, IL 61375.

Phyllis Zanzig, wife of retired superintendent and poet Kenneth R. Zanzig, died of cancer on June 29th. The Midwest Association extends its deepest sympathy to Ken.

Congratulations to Dr. Jack Butler for being inducted into the Colorado Golf Hall of Fame on June 17, 1991.

Len Walters will be our educational speaker at the August meeting. Bring a note book to take notes on how to save for that retirement.

The MAGCS is looking for a club to hold the annual Fall Dinner Dance. If interested, call Joel Purpur at 708/782-4259.

Remember to fill in the registration form in this issue to be able to play in the MAGCS Championship Tournament held September 16, at the Ridgemoor C.C. This is the only form that will be sent to you. Be sure to mail it before the deadline of September 12th.

Congratulations to Ken Lapp on the great raves the Western Open received this year at Dubsdred. Ken and his crew did an outstanding job as host for this year's tournament.

Old face at a new place: Craig Marfia at Carriage Green Country Club. Congratulations, Craig.

The MAGCS Host Sponsors for the August meeting will be: Lebanon Chemicals, Cannon Turf Supply, Inc., and Huber Ranch Sod Nursery. Be sure to thank these people for helping to make our golf day and meeting a success.

Many thanks to Isabelle, Jim "Big Daddy", and Trace Murphy for their hospitality tent at the Western Open on the 4th of July. The food, beverage, and parking in Murphy's yard was appreciated by many Midwest members.

A Special Thank You

from Ken Lapp, Superintendent Cog Hill C.C.

Now that the Centel Western Open is over, I would like to express my appreciation to the companies that went out of their way to help out. Illinois Lawn Equipment for helping out with a man on call if needed. Midwest Irrigation for helping out with a man on call if needed. Chicago Turf and Irrigation with equipment. Lootens Excavating for being there when needed. I also would like to thank the following Superintendents, Oscar Miles, Mike Sauls, Dan Quast and Pete Wilson for sitting down with me and sharing their knowledge on preparing for a tournament. It was very helpful for someone like myself, who had never been thru a tournament before. Also to all the Superintendents who offered their help. Many "Thanks".

Assistant Needed — Apply to Brad Helms at the Palatine Hills Golf Club. Call 708/991-0333.

(Breezes cont'd. page 22)



KUBOTA L2650DT-W 23.5 PTO HP

- Compact design
- Greater operator convenience and comfort
- 3 cylinder, liquid-cooled diesel engine
- A Wet Clutch – first of its kind in this size tractor
- 4 wheel drive
- Easy Checker panel
- Power steering
- Full range of matching implements

Kubota



DIVISION OF CHRISTENSEN POWER EQUIPMENT

**Is Your 1 Source For
Kubota Engine Parts & Service.**

UPS Parts Daily
Call Our Toll-Free Parts Line:
1-800-397-0397
For Service Or Equipment Call:
1-708-301-8500
1-815-469-8500

Golf Course Photography

by Bob Maynard, F-Stop

Photographing your golf course can be a challenging undertaking; one that might lead to frustration and disappointment if not approached with the proper understanding of what it takes to succeed in capturing the beauty that you see there so often. There are a lot of details to be considered before a finished picture can be created. The purpose of this article is to familiarize you with some of the procedures that will increase your percentage of good golf course photographs.

The first consideration should be what kind of equipment to use. The larger format cameras, such as 102 and 4 x 5, will yield the best quality negatives and slides for enlargements and reproduction in magazines, but realistically speaking most people reading this article will be using some type of 35mm camera. Some of this equipment will be a fixed lens type with no options for changing lenses. Others will have the capability of adding wide angle and telephoto lenses to the equipment for increased flexibility. But no matter what type of equipment that you have at your disposal, you can get better photographs if you become more aware of what to do with your equipment. My recommendation would be to have no smaller than 35mm format with both wide angle and telephoto lenses when possible. I'll discuss the use of these lenses later.

The type of film that you will use will be determined by your primary end use of the images. If your primary use is for reproduction in a magazine then your choice should be slide or transparency film. Magazine publishers use slides or transparencies to make color separations for printing and can get the highest color saturation and detail from this medium. Slide film is more exacting in its exposure and therefore can be more difficult to get good results for the inexperienced photographer. Print film would be easier to use because the exposure isn't as critical and it will be less expensive for enlargements, but you will not be able to get the deep color saturation that you can get in slide films that are properly exposed. Remember that the lower "ISO" rated films will render the highest quality results, with finer grain structure for enlargements and reproduction. Proper care of your film both before and after exposure is very important to your color stability. Always refrigerate your film before and after exposure. Be sure if you do refrigerate your film that you allow a couple of hours for the film to warm up in the canister before using to avoid condensation. Have your film processed as soon after exposure as possible for the best color. Above all, do not store your film in your car during hot days.

Perhaps the single most important element in your photograph is the lighting. It makes or breaks a landscape photograph. Cultivating an ability to recognize good lighting when you see it could be your highest priority. Look at any photograph that you like and ask where the lighting is coming from and why it makes the photograph good. Study the direction of light every time you view a picture and become aware of its effects on the landscape. Low afternoon light can define shapes on a golf course that you were not aware of at noon. Dark foregrounds and brightly lit greens can lead the eye to the green which is the main subject. Undulations in the greens that are such an important factor in every golfer's game become well defined in the low angled light of late afternoon. The way that light strikes

(cont'd. page 18)

Awards Banquet Chicagoland Golf Course Mechanics Association



Pat Kelly, Vice President CGCMA presiding while Pat Ryan prepares to present Bruce Williams with a plaque for his help in forming the CGCMA.



Recipients of the evenings awards, left to right, Mark Johnson of Illinois Lawn Equipment Company; James Reed, of Chicago Turf and Irrigation; Bruce Williams, MAGCS President and Superintendent of Bob O'Link Golf Club; and John Maguire, President Emeritus of CGCMA and Sunset Ridge C.C.



John Maguire, President Emeritus, receiving a plaque in appreciation for his services from Pat Ryan, President of the Chicagoland Golf Course Mechanics Association.

Protect Your Eyes

Forty percent of all accidents that cause blindness happen at home, and many of these occur during summer house cleaning and yard work.

Household cleaning agents, power tools, fertilizers, weed killers and power yard equipment can all cause eye injuries.

Ordinary eyeglasses must be impact-resistant by law, but they are not strong enough to protect against debris thrown by power tools. The best way to avoid eye accidents is to wear safety goggles, face shield or safety glasses, all of which are available at hardware stores.

Specializing in Golf Course Renovations

Tees • Greens • Traps • Fairways • Hydroseeding

company, inc.
don fiore

landscape contractors & architects
golf course contractors

28846 Nagel Court
Lake Bluff, Illinois 60044
708-234-0020
Fax 708-234-0922

Certified Member: American Society of Landscape Architects
Midwest Association of Golf Course Superintendents

This Week, Set Aside 4 Hours And Teach Your Youngster



About The Birds And The Tees.

Take your son or daughter out to play. And remember, when you share your love of golf you have something the two of you can share for a lifetime.

Golf...Share The Experience.



1150 South U.S. Highway One, Jupiter, Florida 33477 • (407) 744-6006

EVERGREEN protective covers.

Hinspergers Poly Industries Ltd.



Quality Greens Cover Protects And Promotes Growth

Patented weave construction allows cover to "breathe."

Minimizes risk from high temperatures. Retains necessary warmth for early plant growth.

Evergreen is 85% transparent allowing grass to receive enough sunlight to survive winter cold.

Standard Sizes

- 12 ft x 50 ft
- 24 ft x 50 ft
- 48 ft x 60 ft
- 60 ft x 90 ft
- 72 ft x 90 ft
- 84 ft x 110 ft
- Custom Sizes Available

Special Evergreen Features

- Cover is impervious to water
- Resists rot and mildew
- No overlap marks due to one-piece construction.

**SAVE BIG GREEN
ON EVERGREEN**

TO ORDER CALL:

Arthur Clesen, Inc.

543 Diens Drive • Wheeling, IL 60090
(708) 537-2177 FAX (708) 537-2199



(Photography cont'd.)

a green or fairway of a golf hole can make a remarkable difference in the impact of a photograph.

Generally speaking, having the light source at your back or sides will render the best color saturation on your shots and will define landscape shapes. When shooting with the light at your back be careful not to get your shadow in the foreground of the photograph. Because the layout of your course doesn't change from hour to hour or day to day, the only variable that you have is to view the lighting on your course at different times of the day and determine what is the optimum time to photograph a particular hole. If you are dealing with late afternoon diminishing light as your optimum time for a particular hole, there may be only a few minutes during that time that the hole can be best photographed. Other holes can only be photographed in overcast days because the greens are always showing shadows from surrounding trees when bright sun is used. Being aware of this and taking advantage of the lighting will render the best possible image. Shooting on a crisp clear day that has a mixture of deep blue sky and white clouds adds another dimension to your photographs. Avoid those hazy bald sky days because there is no color saturation.

Your images should be well thought out for both lighting and composition. It is equally as important to know what to include as what to exclude. Try to compose your image to be as simple and uncluttered as possible, eliminating distracting elements and backgrounds so as to focus the viewers attention on the key element. Get in close, shoot from the back of the green with a wide angle lens, shoot from the tee with a normal lens, shoot from the fairway with a telephoto lens, get a high angle, or a low angle, shoot from every imaginable angle and you'll surprise yourself with the limitless possibilities that some of the holes present. Be selective about a certain feature that makes that hole unique. Sometimes you can even include two holes effectively in the same photograph.

Be careful to meter the landscape carefully for proper exposure of your film; bracketing your exposure by taking photographs at both the correct exposure according to your meter and at one Fstop above and below that exposure. This practice will show you, especially in slide photography, that one Fstop can make all the difference in a slides color saturation. A few extra frames exposed at the perfect lighting time for a hole is cheap insurance that you have the image properly exposed. Make notes of your exposure in a notebook for later reference. This will increase your knowledge for more predictable results every time.

Most important of all is to have fun trying to capture that special beauty that only a golf course can offer. The more that you shoot and evaluate what you shoot the better you will become at photographing your course.

Credit — "Through the Green", March/April 1990

Help Wanted

The Geneva National Golf Club is looking for a full-time, permanent Irrigation Technician to work in the Golf Course Maintenance Department. Requirements include, but are not limited to, experience with Toro Network 8000 System.

If interested, please send resume to:

Geneva National Golf Club, Golf Course Maintenance
2200 Petrie Road, Lake Geneva, WI 53147.

BOJO TURF SUPPLY CO.

ALL MAJOR TURF SUPPLIES



*Our 22nd
Year*

- Naiad & AquaGro
- Chemicals
- FMC Sprayers
- Fertilizers
- Tee & Green Items
- Shop Supplies
- Seed & Terra Green
- Plant Marvel
- Safety Equipment
- Marker Paint & Ice Melt

24356 Harvest Hills Road
Frankfort, IL 60423 1-800-732-9401

CUSTOM FORMULATED FERTILIZERS

- Granular or Liquid
- Bagged or Bulk Delivery
- Formulated to your specifications at no extra cost

Tyler
Enterprises, Inc.

Rt. 53, Elwood, IL 60421
815-423-5551

- Turf Chemicals
- Grass Seed
- R & R Replacement Parts

"Golf Course Work a Specialty"
LEMONT PAVING CO.

Lemont, IL 60439

Jim, Tracy Murphy

(708) 257-6701

PAARLBERG CHEMICALS

featuring

- Par-Ex Fertilizer
- Lebanon Fertilizer
- Du Pont Chemicals
- Chipco Chemicals
- Daconil - Dacthal
- Bean Sprayers
- Elanco
- PBI Gordon
- All Major Turf Supplies



Quality



Value



Service

1840 E. 172nd St., So. Holland
708-474-3086 815-469-6730

To Keep Your Course In Classic Condition, Use These High-Quality Products from **NOR-AM**

- **NITROFORM SLOW-RELEASE NITROGEN**
Releases by slow bacterial action to provide consistent 38% nitrogen
- **TURCAM INSECTICIDE**
Controls a wide range of turf and ornamental pests
- **TURCAM 2 1/2 G**
All the benefits of regular TURCAM in convenient granular formulation
- **PROGRASS HERBICIDE**
Controls certain annual grasses and broadleaf weeds in ornamental turf



- **DELIC INSECTICIDE**
Gives fast knockdown and long-term control of fleas, ticks and other pests
- **BANOL TURF AND ORNAMENTAL FUNGICIDE**
Controls pythium and phytophthora
- **PROXOL 80SP INSECTICIDE**
Controls white grubs, sod webworms, cutworms and armyworms in fine turf

NOR-AM
NOR-AM CHEMICAL COMPANY
CHICAGO, ILL. 60601

THE FAIRWAY CLASSICS
to keep your course in top condition

John M. Turner
Sales Representative
(708) 462-9866

Featuring **RANGER** **BROWN LEAF COMPOST MAKER**

A NATURAL, EFFICIENT COMPOSTING SYSTEM

Quickly turns
brown leaves
into rich,
moist
humus.

Works in
20-60 days



turf
SUPPLY, LTD.

800/640-9220
815/436-TURF

Plainfield, IL

Halloran & Yauch, Inc.

2040 Lehigh Ave., Glenview, IL 60025

**CUSTOM PUMP HOUSE
CONSTRUCTION & REMODELING!
IRRIGATION INSTALLATION
& REMODELING!
GOLF COURSE DRAINAGE SYSTEMS!**

**Call Us For Your Golf
Course Irrigation Needs!**

(708) 729-1625



2 N 255 County Farm Rd. West Chicago, IL 60185
Phone: (708) 668-5537

Distributors of:

- Agri-Dianostic Disease Kits
- Subdue
- Acclaim
- Banner
- Banol
- Naiad



NATURAL ORGANIC
Milorganite®
FERTILIZER
**America's
Number One
Natural
Organic
Fertilizer**

- Many of the finest golf courses in America are fertilized with Milorganite.
- Non-burning, cost-effective, turf fertilizer.
- 90% Water Insoluble Nitrogen (W.I.N.), slow release nitrogen promotes vigorous growth.
- Rich in organic iron — 4% minimum guaranteed.
- Supplies humus and improves water holding capabilities of soils.

FREE LITERATURE
For further information call
414-225-2222.

PERSONALIZED AND PROFESSIONAL LAWN AND TREE CARE SERVICES.

For **tree care, hydroseeding, prairie installation or lawn care** go with the professionals. McGinty Bros. Inc.! We're small enough to provide that personalized service and large enough to offer all the professional systems knowledgeable clients insist upon.

McGinty
BROS., INC.

3524 Long Grove Road
Long Grove, Illinois 60047
TEL: (708) 438-5161
FAX: (708) 438-1883

PEERLESS FENCE CO.

3N381 Powis Rd.
West Chicago, IL

- Chain-Link Fencing
 - Wood Fencing
 - Special Gates
 - Driving Range Fencing
 - Tee Protection Fencing
 - Wood & Steel Guard-Rails
 - Golf Course Work Our Specialty
- 708/584-7710 **Hal Laman**

NATIONAL CHEMSEARCH CORP.

Russel Fishman
(708) 432-3588