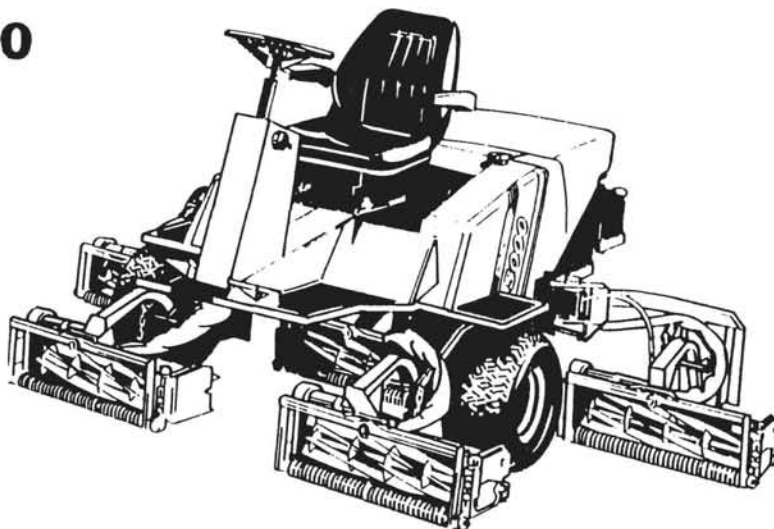


RANSOMES

WHERE GREAT IDEAS START

NEW FAIRWAY 5000

- Five cutting units, hydraulically controlled
- Wide 106" cutting width
- Excellent hill climber
- Ultimate in operator comfort
- Three-wheel drive PLUS
- Very productive - produces top quality cut (80 cuts/meter) even at 6mph top speed
- Lightweight and compact for easy transport
- Fully interchangeable cutting units



Permalawn Inc.

2222 GREEN BAY RD.
EVANSTON, IL 60201

312-UN 4-5045

**Schwarzenraub
Implement Inc.**

1040 W. Jefferson
Morton, Illinois 61550

Phone (309) 263-7322

**CHRISTENSEN
POWER
EQUIPMENT INC.**

9500 W. MONEE-MANHATTAN RD.
FRANKFORT, IL 60423

PHONE (815) 469-5898

ALEXANDER EQUIPMENT COMPANY INC.

2245 Blacksmith • Wheaton, Illinois 60187 • 312/690-0092

WOOD WASTE DISPOSAL A REAL HEADACHE?
RECYCLE YOUR MATERIAL INSTEAD OF PAYING TO DUMP IT!

WE ARE DISTRIBUTORS OF MORBARK AND ASPLUNDH BRUSH CHIPPERS!

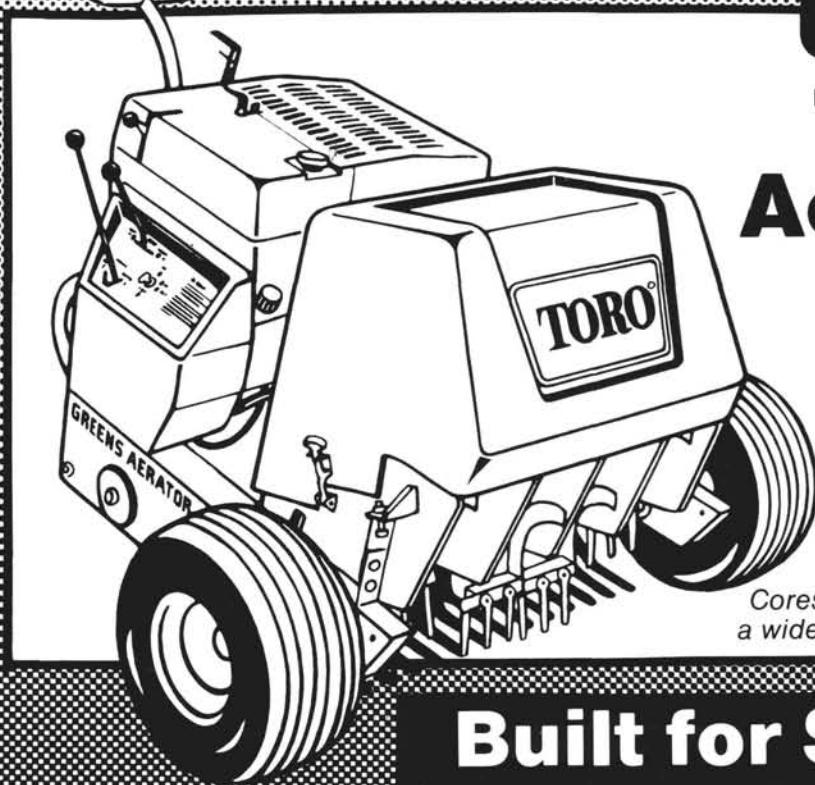
CALL NOW FOR INFORMATION ON OUR RENTAL/PURCHASE PROGRAMS.
NEW AND USED CHIPPERS AVAILABLE.



EEGER BEEVER



CHIP & BAG BUSY BEEVER



TORO®

Turf Aerator

Cores up to a 4" depth with a wide selection of tine sizes.

**Built for Speed.
Designed to Last.**

We Sell & Service **OVER 40 BRANDS OF TURF EQUIPMENT**

- **AERIFIERS**
TORO®, OLATHE
- **BLOWERS & VAC SYSTEMS**
TORO®, OLATHE, TURF VAC
- **BRUSH CHIPPERS**
OLATHE
- **FLAIL MOWERS**
DANDL
- **GRINDERS & SHARPENERS**
EXPRESS DUAL, FOLEY
- **IRRIGATION PRODUCTS**
TORO®, PSI, WATTS, KIFCO, RAINMASTER, IMPERIAL
- **POND AERATORS**
OTTERBINE
- **PRUNERS & TRIMMERS**
MAIBO, TORO®
- **REEL MOWERS**
TORO®
- **ROTARY MOWERS**
TORO®, ALLEN AIR CUSHION
- **SEEDERS & THATCHERS**
TORO®, OLATHE
- **SNOW BLOWERS**
TORO®, OLATHE, HANSON
- **SPRAYERS & SPREADERS**
SDI, HAHN, BIRCHMEIER
- **SWEEPERS**
M-B CO., OLATHE
- **TURF VEHICLES**
EZ-GO



Complete In-Field Service Support

Chicago
Turf & Irrigation Inc.



**ON-SITE
DEMOS AVAILABLE
(on selected models)
312-773-5555**

1170 W. Ardmore • Itasca, Illinois 60143

Midwest Breezes



Upcoming Events — Mark Your Calendar

September 18 — MAGCS meeting at Woodmar G.C.

October 2 — ITF Golf Day at Flossmoor & Ravisloe C.C.

October 9 — MAGCS meeting at Prestbury C.C.

November 8 — Midwest Turf Clinic & Meeting at Medinah C.C.

November 28-30 — Turfgrass and Ornamental Chemical Seminar, Purdue University. Contact Jeff Lefton (317) 494-9737.

December 12-14 — NCTE at Pheasant Run Resort Convention Center

January 22-24 — Midwest Regional Turf Conference, Indianapolis, IN

Special Notice: The September meeting date has been changed from September 25 to the NEW DATE September 18th at Woodmar G.C.

For Sale: A new Multi-Core Aerator with a 7 hp engine, different types of tines available. This machine is from Australia. Give Mike Bavier or Mel a call at 358-7030 for more information.

Mike Bavier would like to remind everyone to save the "Blue Tags" for the seed you purchase from "Tee to Green". This is any seed from that company that has a blue tag, will be redeemed for 50 cents when given to the Musser Foundation. Tags can be given to either Mike Bavier or Dudley Smith for both are Directors on the Musser Foundation Board.

The arrangement committee is looking forward to 1990 and would like to you to consider NOW about holding a meeting at your course. There is no better time than now to ask your board or owner to have a MAGCS meeting at their club.

Don Spiers has left Turf Products and is presently working for Ciba-Geigy as the Illinois and Wisconsin representative. Good luck Don on your new position.

Al Fierst reports that he had just over 6" of rain in about 2 days time around the 1st of August. Also that this was the first year that he didn't have some kind of a circus atmosphere and tent at his Invitational at Oak Park. Al also reported that he was collecting at least 10 (ten) pounds of Japanese Beetles out of his beetle traps in August.

Timothy C. Glorioso, 618 Ash Street, Willard, OH 44890 is looking for an assistants position in the Chicago area. He is a graduate from Ohio State University with a B.S. in Landscape Architecture and worked this past summer at Muirfield Village Golf Club. Call him at (419) 935-8179.

Alumni of University of Illinois Turf Program

Golf Outing — September 15, 1989

Bartlett Hills Golf and Country Club

Bartlett, IL

Contact: Dave Wehner (217) 333-7848

NOVEMBER 13-15, 1989 — Penn State Golf Turf Conference, Keller Conference Center, The Pennsylvania State University, University Park, PA. Contact: Dr. Joseph Duich, Department of Agronomy, 405 Agric. Admin. Bldg., University Park, PA 16802 (814) 865-9853 or Pennsylvania Turfgrass Council, P. O. Box 417, Bellefonte, PA 16823-0417, (814) 355-8010.

"Monthly Blessing"

Each Month's a Great Month, Blessings in All.

September now greets Us, with a taste of Fall.

Goodbye Summer pressure, heavy play and heat,

Autumn's delights, will now Drum the Beat.

All become excited when a New Season arrives,

To watch God's Creation, Flourish and Thrive.

There is no ruler, with which to measure,

The extent of His Plentiful Treasure.

Kenneth B. Zanzig

Phil Bersin, Superintendent at Carriage Greens had a heart attack on August 5th — we all wish Phil a speedy recovery.

Craig Kosiba is looking for an assistant's position. He is a 1980 graduate of Joliet Jr. College and a 1982 graduate of SIU in plant and soil science. Call him at (815) 727-1664 or (815) 725-1178.



Mark Johnson (left) of Nadler Golf Car Sales, Inc. in Aurora, IL, and Keith Kohlmann (center), area representative for Elanco Specialty Products, present Donald Cross, CGCS, Bryn Mawr Country Club in Lincolnwood, IL, with a Club Car golf cart. Cross won the cart in a drawing at the Elanco booth during the 1989 International Golf Course Conference and Show earlier this year.

Trees on the Move

by Don Ferreri

Woodridge Golf Club/Seven Bridges

A landscaping feat was initiated at the site of the new Seven Bridges championship golf course being located over the now closed Woodridge Golf Club¹ in Woodridge, Illinois. Forest City-Harris Group, developers of Seven Bridges, brought Instant Shade Trees, Inc. from Houston, Texas to relocate 25 large, 50-75 year old trees.

Al Korenek², president of Instant Shade Trees, Inc., designed, patented and built the world's first hydraulic tree spade from a love for both trees and machinery. All tree spades today derive their basic concept from Korenek's original spade patented in 1965. Three years ago, Korenek invented the "Dream Machine", a 14-foot version of a typical tree spade.



To skeptics amazement, Korenek's "Dream Machine" invention can transplant some of the largest trees (caliper ranging from 16 to 32 inches) with a reported survival rate beyond 90 percent. The giant tree spade encircles the tree, sinks its blades into the ground in a 14-foot radius around the tree, lifts the tree and root ball weighing up to 65,000 pounds, and carries the tree and root system to a new home. The operation is a many times magnified version of a typical transplant and generally takes two hours to relocate one tree.

The tree transplanting is one of many ways the Forest City-Harris Group is preserving trees on the Seven Bridges site. The developers plan to incorporate as much of the present landscaping as possible into the master planned community.

(cont'd. page 16)

Support Your Advertisers

SPRING AHEAD! GREEN AHEAD! EVERGREEN™

Quality Greens Cover Protects and Promotes Growth!

Patented weave construction allows cover to "breathe."

It minimizes risk from high temperatures. Retains necessary warmth for early plant growth.

Evergreen is 85% transparent allowing grass to receive enough sunlight to survive winter cold.

SPECIAL EVERGREEN FEATURES

- Cover impervious to water
- Resists rot and mildew
- No overlap marks due to one-piece construction

• Six standard sizes:

- 12 ft. x 50 ft.
- 24 ft. x 50 ft.
- 48 ft. x 60 ft.
- 60 ft. x 90 ft.
- 72 ft. x 90 ft.
- 84 ft. x 110 ft.

- Custom sizes available

**SAVE BIG GREEN
ON EVERGREEN!**

**DISCOUNT
THROUGH
SEPT. 30th**



TO ORDER CALL:
(312) 537-2177

Arthur Clesen, Inc.

543 Diens Drive • Wheeling, IL 60090

©1988 AC



**Golf Systems/
Large Turf**

**-DESIGN
-INSTALLATION
-SERVICE**

312/895-0331

*Specializing in Bedding Plants
Large Variety Fall Mums*

ANTON'S
Greenhouses & Garden Centers

Rick & Bob Anton
ANTON'S OF KENOSHA
9140 Cooper Rd. (51st Ave.)
Kenosha, WI 53142
414/694-2666

Gary Anton
ANTON'S OF EVANSTON
1126 Pitner Avenue
Evanston, IL 60202
312/864-1134

Working With The Best Can Save You Money.



Not only money, but precious downtime. As the largest, most experienced water system service company in the country, Layne-Western can offer fast, efficient service. Plus, Layne's preventive maintenance programs can keep your system running at its peak performance, avoiding costly downtime and saving you money.

Trained and experienced personnel are ready, whether you need emergency repair or routine maintenance. Let Layne-Western show you how we can help save you money on your valuable investment.

Layne-Western Company, Inc.

Aurora

721 West Illinois Ave.

Aurora, IL 60506

312/897-6941

- Emergency Repair Service
- Water Well Design & Construction
- Pump Sales & Installation
- Test Drilling
- Hydrological Services



- Sonar-Jet™ Well Cleaning
- Chemical Treatment
- Downhole TV
- Monitoring Wells
- Well Abandonment

LW-1489

Lewis International & America's Turf Professionals Rely On



Lewis International has known for years of the high-quality, low-maintenance performance delivered by HIJET, Daihatsu's multipurpose utility vehicles.

The HIJET is powered by a whisper quiet 3 cylinder 30 Hp water cooled engine. Available in 4 different body styles; Cut-a-way, Hydraulic Tipper, New Larger Full Cab and Hydraulic Liftpick/Tipper, you'll be able to do more work with fewer vehicles.

Come in for a demo today on one of the incredible HIJET Vehicles. Call either Gary Jones or Avery Harris at 537-6110.

4 Locations To Serve You:

Home Office:
55 E. Palatine Rd.
Prospect Hts., IL 60070
(312) 537-6110

Lewis Intl., Inc. II
5220 S. Route 31
Crystal Lake, IL 60014
(815) 459-4555

Payline West, Inc.
225 N. Randall Rd.
St. Charles, IL 60174
(312) 584-8700

Payline South, Inc.
1945 Bernice Rd.
Lansing, IL 60433
(312) 474-7600

"Saving the trees was our goal from the time we purchased the property two years ago," notes Fred Peterman, Vice-President of the Forest City-Harris Group. "We're proving we can preserve large, valuable trees through careful planning."

The Seven Bridges development includes a new 18-hole public-owned championship golf course designed by Dick Nugent, a business park, a hotel/conference center, retail space, upscale multi-family housing, and a bike-hike nature trail.

In two weeks, Korenek's "World's Largest Tree Spade" strategically relocated over 25 mature trees throughout Seven Bridges. The results are long term benefits to the golf course and the public. Unparalleled, this spade is an indispensable tool for the future.

¹After 63 years, the Woodridge Golf Club closed on July 30, 1989. The new Seven Bridges Championship Course is due to open during the summer of 1991.

²Korenek can be reached in the Chicago area by contacting Halloran Landscaping (Lake Zurich) and in other areas by calling Instant Shade Trees, Inc. directly at (713) 433-4592.



J W Turf inc

14 N. 937, Rte. 20, Hampshire, IL 60140
(312) 683-4653



Golf & Turf

SALES • SERVICE • PARTS



1500 Utility Vehicle

features: A Multi-Function Vehicle Provides Maximum Productivity Spreader, Sprayer or Utility Truck

● SPRAYER ATTACHMENT

- High Capacity, 160-Gallon Tank
- 3-Section Boom Covers 18.5 Feet
- 55 gpm Centrifugal pump
- Main Sprayer Shut-off Valve
- Three Individual Valve Controls

● SPREADER ATTACHMENT

- Ideal For Applying Sand Topdressing, Fertilizer, Seed, Lime
- 14-Cubic-Foot Hopper
- Adjustable Pendulum Swaths 12 to 40 Feet Wide

● UTILITY BED ATTACHMENT

- 1500-Pound Bed Capacity
- Optional Hydraulic Dump



SEE THE DEERE PERFORM

call Jim Huber
(312) 683-4653



Nothing Runs Like a Deere®

Servicing Our Customers Is Our Way of Business



Servicing 24
Counties in
Illinois &
Indiana



The sign of a proven winner

At Northrup King, we're as uncompromising about turf-grass as you are. That's why every Medalist® Brand Turf Product goes through years of pre-testing in the lab and in the field.

Our grasses establish fast, mow well and stand up to weather and disease. And each one is specially formulated for your climate and geographic area.

If you want to seed with a proven winner, talk to your Northrup King distributor today. For more information call (612) 593-SEED. Or write Northrup King Medalist Turf Products, P.O. Box 959, Minneapolis, MN 55440.



CUSTOM FORMULATED FERTILIZERS

Tyler
Enterprises, Inc.

Rt. 53, Elwood, IL 60421
815-423-5551

- Granular or Liquid
- Bagged or Bulk Delivery
- Formulated to your specifications at no extra cost
- Turf Chemicals
- Grass Seed
- R & R Replacement Parts

KOELPER BROS., INC.

Golf Course Building and Remodeling
444 E. Mors Avenue
Wheeling, Illinois 60090

312-438-7881
DANIEL I. KOELPER

312-541-9182
VICTOR C. KOELPER

FOR THE FINEST IN SOD THORNTON'S SOD NURSERY

312 - 742-5030

Rt. 2 Box 72

Elgin, Ill. 60120

BOJO — PAARLBERG

Serving Your Needs Over 30 Years!

BOJO TURF SUPPLY CO.

ALL MAJOR TURF SUPPLIES



*Our 20th
year*

- Naiad & AquaGro
- Chemicals
- FMC Sprayers
- Fertilizers
- Tee & Green Items
- Shop Supplies
- Seed & Terra Green
- Plant Marvel
- Safety Equipment
- Marker Paint & Ice Melt

24356 Harvest Hills Road
Frankfort, IL 60423 815-469-6730

PAARLBERG CHEMICALS

featuring

- Par-Ex Fertilizer
- Lebanon Fertilizer
- Du Pont Chemicals
- Chipco Chemicals
- Daconil - Dacthal
- Bean Sprayers
- Elanco
- PBI Gordon
- All Major Turf Supplies



Quality  Value  Service

1840 E. 172nd St., So. Holland
312-474-3086 815-469-6730

Halloran & Yauch, Inc.

2040 Lehigh Ave., Glenview, IL 60025

**CUSTOM PUMP HOUSE
CONSTRUCTION & REMODELING!
IRRIGATION INSTALLATION
& REMODELING!
GOLF COURSE DRAINAGE SYSTEMS!**

**Call Us For Your Golf
Course Irrigation Needs!**

(312) 729-1625

PROCESSED SHREDDED HARDWOOD BARK OTHER ORGANIC MULCHES

XYLEM, LTD.

PROCESSORS OF WOOD PRODUCTS

CORPORATE HQD
RT. 84 NORTH
CORDOVA, IL 61242
OFF. 309-654-2261



Selected
varieties of
shade, ornamental trees,
shrubs and evergreens.

Deerpath Road Batavia, IL 60510 312/879-0120

DEERPETH NURSERIES

KILLIAN
DESIGN GROUP INCORPORATED

GOLF COURSE ARCHITECTS

639 First Bank Drive, Palatine, Illinois 60067 (312) 358-8884

FS LAKE-COOK FS
Golf Course • Landscape & Nursery Supplies
(Division of Lake-Cook Farm Supply Co.)



A Full Line Distributor For:

- | | |
|---------------------------|---------------------|
| • Elanco Products | • P.B.I. Gordon |
| • Country Club Fertilizer | • Milorganite |
| • Shaws Fertilizer | • Monsanto Round Up |
| • Agri-Plex | • F.S. Fertilizers |
| • Union Tools | • Growmark Seed |
| • Fuels | • Lube Oil |

PETROLEUM DIVISION

101 E. MAIN ST.
LAKE ZURICH, IL 60047
540-0100

TURF DIVISION

1214W NORTHWEST HWY.
PALATINE, IL 60067
991-4800

BULK FERTILIZER PLANT

170 CEDAR AVE.
LAKE VILLA, IL 60046
356-9600

"The Co-operative Spirit Working For You"

McGinty
BROS., INC.

LAWN CARE

Weed, Insect, Disease Control;
Fertilizing, Core-aerifying, Slit Seeding

TREE CARE

Tree Spraying, Feeding,
Surgery, Trimming, Removal

HYDROSEEDING

PRAIRIE SEEDING

3524 LONG GROVE ROAD
LONG GROVE, ILLINOIS 60047 (312)438-5161

PEERLESS FENCE CO.

3N381 Powis Rd.
West Chicago, IL

- | | |
|----------------------------------|----------------------------|
| • Chain-Link Fencing | • Driving Range Fencing |
| • Wood Fencing | • Tee Protection Fencing |
| • Special Gates | • Wood & Steel Guard-Rails |
| • Golf Course Work Our Specialty | |

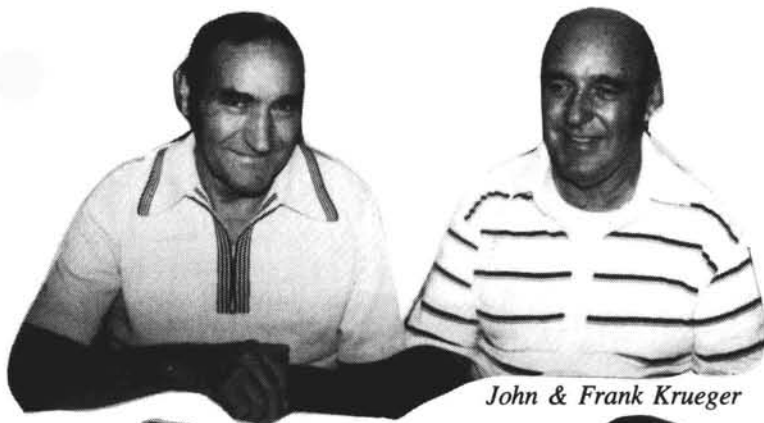
312/584-7710

Hal Laman

NATIONAL CHEMSEARCH CORP.

Russel Fishman
(312) 432-3588

The Seniors at Chapel Hill G.C.

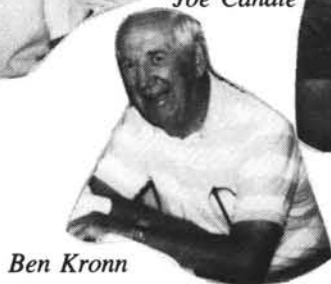


John & Frank Krueger

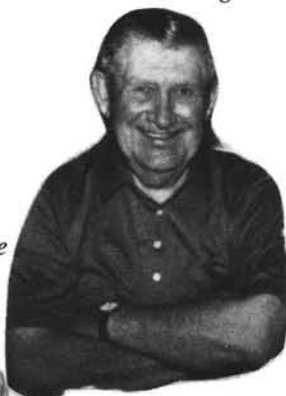


Joe Canale

Bill Kraft



Ben Kronn



Bill Miller



Editor's note: I think Dr. Kane is asleep at the wheel for he didn't move between pictures. With Randy (top photo) is our photographer Ray Schmitz (but who took this picture?). Joel Purpur and Bruce Williams are the supporting cast in the lower picture.

Photos by Ray Schmitz

November 11, 1989 — Chicago Suburbs Will Have New Area Code 708

To keep up with Chicagoland's expanding economy, we're adding a new area code — 708 — that will provide 7 million new phone numbers. Customers inside the Chicago city limits will keep area code 312.

The boundary will follow Chicago's city limits as shown below.

Some Things to Remember

- Chicago suburbs change to area code 708
- The City of Chicago remains 312
- The introduction of area code 708 *will not* change calling rates
- The introduction of area code 708 *will not* change existing 7-digit phone numbers
- To call Chicago from suburbs dial 1 + 312 + 7-digit number
- To call suburbs from Chicago dial 1 + 708 + 7-digit number

To Help You Adjust...

To help customers adjust to the new way of dialing, there will be a three-month transition period — from November 11, 1989 through February 9, 1990 — during which time both the old and new ways of dialing calls will continue to work. Beginning February 10, 1990, incorrectly dialed calls will not be completed. Calls will be intercepted by a recording explaining the new dialing procedures, and will have to be redialed.

Systemic Fungicide Families

D. H. Scott and C. S. Throssell
Professor, Department of Botany and Plant Pathology
and Assistant Professor, Department of Agronomy, respectively
Purdue University

Systemic fungicides have the potential to control many turfgrass diseases. A systemic fungicide functions as a protective, or sometimes a curative, agent from within the plant tissues. Movement of a systemic fungicide within the plant may be limited or extensive depending on the compound.

The mode of action of a systemic fungicide is often a very specific site within individual cells. Potential for development of resistance is high with many, but not all systemic fungicides. Systemic fungicides usually control a more narrow spectrum of diseases than protectant (contact) fungicides.

A protectant fungicide functions as a toxic barrier on the plant surface. There is limited movement of a protectant fungicide within the plant. The mode of action of protectant fungicides is at many sites in the fungi. The potential for development of fungal resistance to a protectant fungicide is very low.

Since the mode of action of a systemic

fungicide is very specific, the repeated use of a single systemic fungicide or the repeated use of several systemic fungicides within the same fungicide family greatly increases the risk of developing fungal disease resistance. When fungal disease resistance occurs, a specific race of a fungal species can no longer be controlled using any fungicide within a given fungicide family.

Development of disease resistance to systemic fungicides can be minimized by rotating systemic fungicides. Do not apply systemic fungicides from the same family for more than two consecutive applications. Alternate systemic fungicides from different families or alternate systemic with contact fungicides, or use mixtures of fungicides to minimize the risks of disease resistance.

Listed below are the systemic fungicide families, the common chemical names of fungicides, and trade names of fungicides within each family.

Fungicide Family	Common Chemical Name	Trade Name
Benzimidazoles	benomyl	Tersan 1991
	thiophanate-ethyl	Cleary's 3336
Dicarboximides	thiophanate-methyl	Bromosan
		Chipco Spot Kleen
		Fungo 50
Sterol Inhibitors	iprodione	Scott's Proturf
	vinclozolin	Fert. & Disease
Acylalanies	fenarimol	Scott's Proturf
	propiconazole	Fungicide VII
Carbamates	tridamefon	Bayleton
Carbamates	metalaxyl	Subdue
Carbamates	propamocarb	Banol
Unclassified	fosetyl aluminum	Alliette

This table should serve as a general guideline only; refer to the product label for specific directions. No endorsement of named products by the authors or Purdue University is intended, nor is criticism implied for products not mentioned.

Pictures of the Purdue Field Day This Year

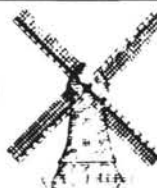
Photos by Mark Schmitz



Kevin Czerkies was our host Superintendent and chef at the steak fry at his club in June.

SUPPORT YOUR ADVERTISERS!

OLD



DUTCH

SAND COMPANY, INC.

APPROVED TOP DRESSING SAND
GOLF COURSE AGGREGATES
TRAP SAND

Call for direct quotes on all your
Aggregate needs

Richard E. Mika

(312) 374-2303

(312) 938-7020

Country Club Greens Grade Fertilizers

Gold Cup quality for great-looking
greens, tees & fairways.



PRODUCT	TURFGRASS USE	ORGANIC CONTENT	SQ. FEET COVERAGE
Country Club 18-4-10	Greens Tees Fairways	90%	9,000
Country Club 18-3-12	Greens Tees Fairways	70%	9,000
Country Club 18-0-18	Greens Tees Fairways	80%	9,000
Country Club 8-4-24* 100% Sulfate of Potash	Greens Fall Fairway Year Round	30%	12,000*

The particle sizing is a small homogeneous granulation for less mower pickup.

Brian McGuffin

Lebanon
TOTAL TURF CARE

1332 Reichert Road Crete, IL 60417 (312) 672-7537