

# J W Turf inc

14 N. 937, Rte. 20, Hampshire, IL 60140  
(312) 683-4653



# Golf & Turf

SALES • SERVICE • PARTS



## 1500 Utility Vehicle

features: A Multi-Function Vehicle Provides Maximum Productivity Spreader, Sprayer or Utility Truck

### ● SPRAYER ATTACHMENT

- High Capacity, 160-Gallon Tank
- 3-Section Boom Covers 18.5 Feet
- 55 gpm Centrifugal pump
- Main Sprayer Shut-off Valve
- Three Individual Valve Controls

### ● SPREADER ATTACHMENT

- Ideal For Applying Sand Topdressing, Fertilizer, Seed, Lime
- 14-Cubic-Foot Hopper
- Adjustable Pendulum Swaths 12 to 40 Feet Wide

### ● UTILITY BED ATTACHMENT

- 1500-Pound Bed Capacity
- Optional Hydraulic Dump



SEE THE DEERE PERFORM

call Jim Huber  
(312) 683-4653



## Nothing Runs Like a Deere®

Servicing Our Customers Is Our Way of Business



Servicing 24  
Counties in  
Illinois &  
Indiana

## Well and Pump Problems are Never Convenient. Layne-Western Can Help.



Layne-Western is there with emergency service when those unexpected breakdowns occur. We offer trained and experienced personnel who will keep your well and pump in its best operating condition.

Our Layne-Western Preventive Maintenance Program offers you the peace of mind that comes with quality and experienced service to assure that the valuable investment in your water supply system stays protected.

Whether you need emergency repair or routine maintenance, you can count on

## *Layne-Western Company, Inc.*

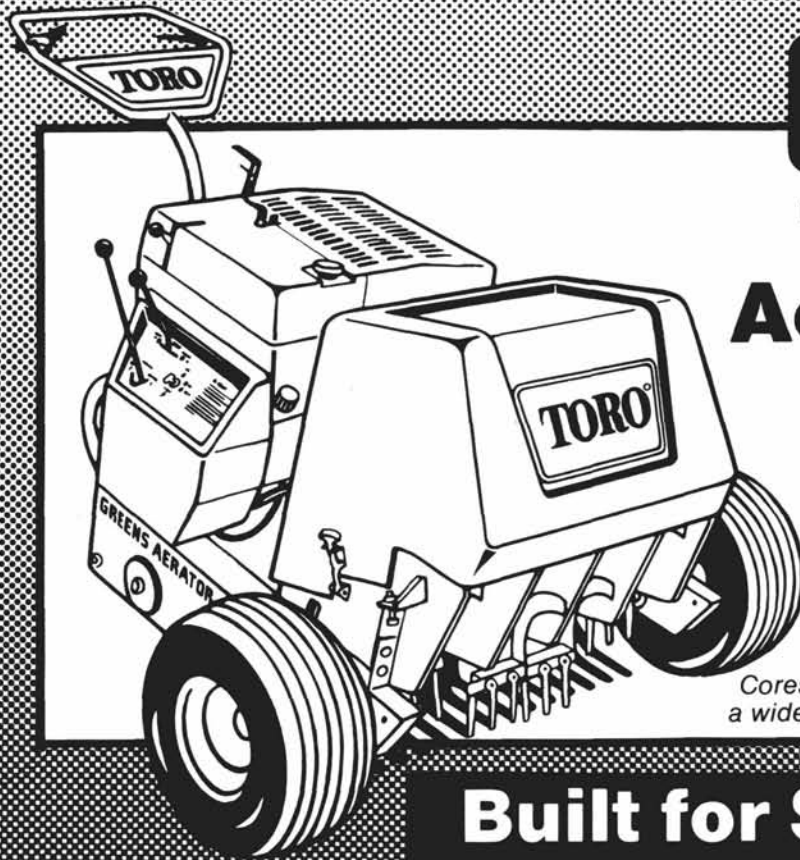
721 West Illinois Ave.  
Aurora, IL 60506  
312/897-6941

- Pump Repair Service
- Water Well Design & Construction
- Pump Sales & Installation
- Well Rehabilitation
- Hydrological Services



- Sonar-Jet Well Cleaning
- Chemical Treatment
- Downhole TV
- Monitoring Wells
- Well Abandonment

LW-1088



**TORO**

## Turf Aerator

*Cores up to a 4" depth with a wide selection of tine sizes.*

**Built for Speed.  
Designed to Last.**

## WE SELL & SERVICE OVER 40 BRANDS OF TURF EQUIPMENT

● **AERIFIERS**  
TORO®, OLATHE

● **BLOWERS  
& VAC SYSTEMS**  
OLATHE, TURF VAC, TORO®

● **SPRAYERS  
& SPREADERS**  
S.D.I., BIRCHMEIER, VICON,  
CYCLONE

● **BRUSH CHIPPERS**  
OLATHE

● **POND AERATORS**  
OTTERBINE

● **SEEDERS  
& THATCHERS**  
OLATHE, TORO®

● **SWEEPERS**  
OLATHE, M-B CO.

● **GRINDERS  
& SHARPENERS**  
EXPRESS DUAL, FOLEY

● **UTILITY VEHICLES  
& TRAILERS**  
OLATHE, TORO®

● **SNOW BLOWERS**  
TORO®, HANSON

● **PRUNERS  
& TRIMMERS**  
MAIBO, TORO®, A.E.G., KAAZ

● **FLAIL MOWERS**  
MIGHTY MAX

● **ROTARY MOWERS**  
TORO®

● **REEL MOWERS**  
TORO®

ON-SITE DEMOS AVAILABLE  
(on selected models)  
**312-773-5555**



*Complete In-Field Service Support*

**Chicago  
Turf & Irrigation Inc.**

1170 W. Ardmore • Itasca, Illinois 60143

## Midwest Breezes



### Upcoming Events — Mark Your Calendar

**September 13** — MAGCS monthly meeting at Crystal Lake C.C.

**September 19** — ITF Golf Day at Knollwood G.C.

**October 10** — MAGCS monthly meeting at Lake Barrington Shores

**November 2** — Annual Meeting & MAGCS Turf Clinic

**November 14-16** — Penn State Turf Conference

**December 6-7-8** — NCTE, Pheasant Run

**Jan. 23, 24, 25** — Midwest Regional Turf Foundation Seminar, Indianapolis

The annual Ray Gerber Editorial Award contest this year has five articles that will be entered. They are as follows: January 1988, **The 19 Law and You**, by Robert Breen; February 1988, **Brain Food**, by Dennis Wilson; March 1988, **Flower Bed Preparation and Maintenance**, by David Ward; April 1988, **Our Future is Now** by Ed Fischer; May 1988, **Impact With Detail**, by Joel Purpur. A panel of judges will select the best written article and the award will be given at the MAGCS clinic on November 2nd at Medinah C.C.

Better late than never — Congratulations to Jeff Nack on his marriage to Roberta on "Friday, May 13th." Jeff was our host for the August meeting at Springbrook C.C.

Mechanics Meeting September 20, 1988 will be held at the Bob O'Link Golf Club maintenance building. Address: 1120 Crofton Road, Highland Park, IL. The topic of discussion will be welding. Call Pat at 432-0088 or Wes at 447-1047 for times and any other information.

Social Security is now offering free benefit projections. They will provide free detailed individual financial statements to workers estimating how large a benefit check they will get each month when they retire. Call a toll free number 1-800-937-2000 to request copies of the disclosure form, SSA-7004.

Assistant Superintendent Needed: Naperville C.C. under the direction of Dave Blomquist is looking for an assistant, call Dave at (312) 355-9807 or 355-6015.

Sales/Marketing Career: Selling nations leading Fertilizer and Chemicals. Golf Course/LCO experience, 2 year education. Will cover the north mid-west territory. Car, salary, bonus, benefits. Send resume and salary requirements to Lebanon Chemical, P. O. Box 8002, Rochester, MI 48063.

Typing up the copy for the September "B.S." in early August when we have already set records upon records, one has to ponder when it will ever end. The "it" being the heat, humidity and in some cases (or many cases) the lack of rain. I believe most courses were doing so-so thru late July, but then the 1st of August with excessive heat and humidity and high night time temperatures and there went the Poa in many places. But I hope when you are reading this the extreme temperatures have been a nightmare of the past and we will have returned somewhat to a normal existence.

There are new job openings coming up, I only hope that they are not the result of one of the worst years on record. Let's hope that the powers who control our jobs have the fortitude to stand by their Superintendent when members start to complain about how the course looks.

You can't help hearing the same thing time after time when Superintendents get together — "it just isn't any fun any more." For sure — one of our ranks is retiring this year just because of this. What a shame to lose a fellow member due to these hectic times when members are demanding so much more.

#### ATTENTION ALL GOLFERS

enter the

### Illinois Turfgrass Foundation

### NORTHERN ILLINOIS GOLF OUTING

Monday, September 19, 1988

*SUPPORT TURFGRASS RESEARCH IN ILLINOIS*

**Donation — \$85 per person — includes:**

An afternoon round of golf at one of these prestigious Chicagoland golf clubs

Knollwood C.C.

Host Superintendent — Randy Wahler  
11:30 a.m. Shotgun Start

Sunset Ridge C.C.

Host Superintendent — Dennis Wilson  
11:00 a.m. Shotgun Start

- A Golf Car
- Lunch
- Refreshments
- A Sit-Down Steak Dinner at Knollwood C.C. (Approximately 6:00 p.m. — Jacket Required)
- Prizes

Golf courses will be assigned on an alternating basis  
• Attendance limited to 200 Golfers •  
Dom Grotti Trophy Award to Superintendents & Assistants for combined low net

Call ITF Headquarters for reservations

(312) 644-0828

# COST ANALYSIS—SEVEN CLUBS

Donald Gerber  
Raymond Gerber

There have been many discussions on golf course and club grounds maintenance costs. Most golf course superintendents know by talking to one another that unless one understands the bookkeeping system used at a specific club, there is little to gain by just "getting the total cost figure."

When this seminar was in the planning stage, one of the topics to be given consideration was the golf course and club grounds maintenance budgets. We were sure that by having a properly completed questionnaire, information could be presented that would explain the variations in maintenance costs at comparable clubs.

A detailed questionnaire was submitted to seven golf course superintendents at comparable courses. The resulting information produced the following replies to the often used question, "What is your budget for this year, 1968?" Seven clubs replied: \$86,000,

\$94,000, \$96,000, \$98,000, \$120,000, \$153,000, \$174,000 — a difference of \$88,000 existed between the highest and lowest amount.

Expenses were listed under the following items: superintendent salary, assistant superintendent salary, labor, gas and oil, sand, soil, seed, fertilizer, chemicals, flowers, education expense, equipment repair, equipment replacement, electricity, water, landscaping (trees), winter sports, other sports, new construction, and other expenses. The results were charted. It was immediately obvious from the following chart that two items, landscaping and new construction, were inconsistent. One club reported an expense of \$58,000 for trees, shrubs and new construction; other clubs reported no expense for this item, which could be interpreted to mean there actually was no expense involved or that a special fund had been created. If the total amounts stated previously were reduced by expenses reported for landscaping, new trees and new construction (which are not necessary consistent annual expenditures), the high is \$116,000 and the low \$80,000 — a difference of \$36,000 compared to the original difference of \$88,000.

(Editor's note: I thought after 20 years this would make good reading once again)

Course Number	1	2	3	4	5	6	7	Average
Rounds of Golf	20,000	15,000	20,000	26,000	25,000	25,000	No Record	19,000
**	1,2		2	1,2	1,2	2		
Supt. Salary	13,200	18,700	14,500	12,000	11,000	14,500	13,000	13,377
Asst. Supt. Salary	8,400	↓	--	8,400	--	8,500	↓	8,433
Labor	54,400	57,800	46,500	40,000	50,000	39,200	52,000	51,000
Gas & Oil	2,700	1,600	2,300	1,600	2,200	1,600	1,600	1,940
Sand	3,000	1,000	1,200	2,000		800	800	1,466
Soil	800	500	500	--	*4,500	--	1,500	560
Seed	900	2,000	↓	↓	600	400	600	900
Fertilizer	3,500	2,000	7,100	4,000	2,900	3,600	6,000	3,600
Chemicals	5,000	4,500	↑	3,800	2,000	3,000	2,800	3,517
Flowers	1,000	500	200	1,000	135	400	--	447
Educational Exp.	800	300	600	1,000	500	600	--	560
Equip. Repairs	7,000	2,500	3,000	4,000	1,500	4,000	2,500	3,500
Equip. Replacement	10,000	4,300	4,200	14,000	3,000	6,306	7,100	7,700
Electricity	3,400	900	--	--	--	--	--	--
Water	--	2,000	--	--	--	--	--	--
Landscaping, Trees	20,400	12,725	--	Inc. Flowers	4,600	--	5,000	--
Winter Sports	--	--	--	--	--	--	--	--
Other Sports	--	--	--	675	--	100	--	--
New Construction	38,000	28,000	17,700	--	3,000	--	12,000	--
*Other Expenses	2,000	13,550	--	3,800	2,000	2,800	15,640	--
	<u>174,500</u>	<u>152,875</u>	<u>97,800</u>	<u>96,275</u>	<u>93,735</u>	<u>85,806</u>	<u>119,740</u>	
Less land & new construction	<u>58,400</u>	<u>40,725</u>	<u>17,700</u>	<u>96,275</u>	<u>7,600</u>	<u>85,806</u>	<u>17,000</u>	
	<u>116,100</u>	<u>112,150</u>	<u>80,100</u>		<u>86,135</u>	<u>85,806</u>	<u>102,740</u>	

\*Other Expenses Include:  
Payroll taxes, work comp. & insurance  
Medical insurance & pension program  
Uniforms  
Auto  
Tree trimming and spraying  
Telephone  
Elm tree removal

\*\*Superintendent receives in addition to salary:  
1) Home and utilities  
2) Bonus

CDGA Seminar — Fall 1968 (Butterfield C. C.)

# THE TOUGHEST TURF TEAM.



For the turf care industry, Kubota has designed a team of tough precision instruments that work hard, but provide maximum economy.

Powerful but economical Kubota Tractors. Mowers. Tillers. Box scrapers. Front Loaders. Even mini-excavators.

For golf courses, athletic fields, parks, and even private residences, Kubota equipment satisfies the most demanding standards.

Kubota's versatile turf equipment works both independently, and with most existing implements and attachments.

Standard features on many of our tractors include hydrostatic transmission, comfortable operator platforms, and Power steering, safety and noise reduction features.

Add the operating economy special to Kubota, and you have precision instruments to satisfy even the most exacting professional. See the Kubota turf team today.



Nothing like it on earth.™

**IR HUBER RANCH  
SOD NURSERY**

Schneider, IN 219/552-0552  
IN 800-553-0552 • IL 800-553-0554

## NEW 3336<sup>WP</sup>

In Water Soluble Bags

- SAFE
- CONVENIENT
- ECONOMICAL



**W.A. CLEARY CHEMICAL  
CORPORATION**

1049 Somerset Street, P.O. Box 10  
Somerset, NJ 08873 (201) 247-8000

Toll Free Numbers:  
1-800-524-1662 (East of Mississippi)  
1-800-524-1663 (West of Mississippi)

# Lewis International & America's Turf Professionals Rely On



Lewis International has known for years of the high-quality, low-maintenance performance delivered by HIJET, Daihatsu's multipurpose utility vehicles.

The HIJET is powered by a whisper quiet 3 cylinder 30 Hp water cooled engine. Available in 4 different body styles; Cut-a-way, Hydraulic Tipper, New Larger Full Cab and Hydraulic Liftpick/Tipper, you'll be able to do more work with fewer vehicles.

*Come in for a demo today on one of the incredible HIJET Vehicles. Call either Ken Quandt or Avery Harris at 537-6110.*

### 4 Locations To Serve You:

Home Office:  
55 E. Palatine Rd.  
Prospect Hts., IL 60070  
(312) 537-6110

Lewis Int., Inc. II  
5220 S. Route 31  
Crystal Lake, IL 60014  
(815) 459-4555

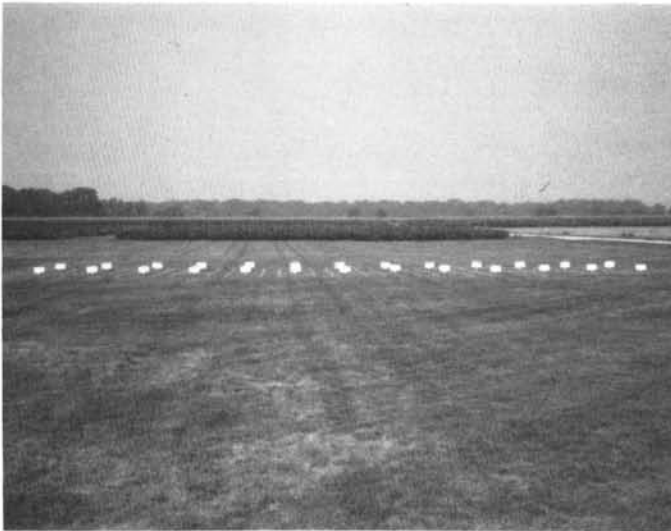
Payline West, Inc.  
225 N. Randall Rd.  
St. Charles, IL 60174  
(312) 584-8700

Payline South, Inc.  
1945 Bernice Rd.  
Lansing, IL 60433  
(312) 474-7600

**Purdue University Field Day**



**Bentgrass turf plots at Purdue**

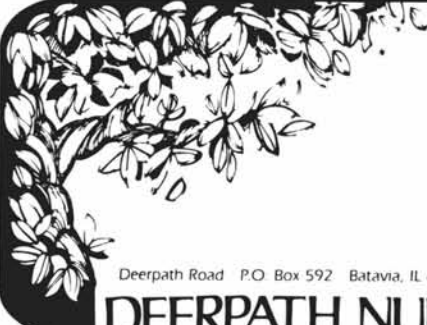


**Pre-emergent study for crabgrass control on bluegrass**



**Wild Flower Study with irrigation and fertilization.**

Photos by Scott Armstrong



Bradford Pear  
(*Pyrus calleryana*  
'Bradford') to  
3 inch cal.  
Fall price list available.

Deerpath Road P.O. Box 592 Batavia, IL 60510 312/879-0120

**DEERPATH NURSERIES**



The  
last hose  
you'll ever  
have to buy

If it ever fails, Gates will  
replace it at no charge.\*

**BOJO TURF SUPPLY CO.**

\*Lifetime Replacement registration and coupling  
from failed hose required.

**ROSEMAN**

2620 CRAWFORD AVE. 864-1842  
EVANSTON, ILLINOIS

**TURF EQUIPMENT HEADQUARTERS**

ROSEMAN GANG MOWERS	FORD TRACTORS
TILLER RAKES	DEDOES AERIFIER
LELY SPREADERS	LOADERS
SEEDERS	LEAF MULCHERS
ROTO TILLERS	ROTARY MOWERS
HOMELITE CHAIN SAWS	HOMELITE PUMPS

**SALES ● SERVICE ● PARTS ● RENTALS**

**Support  
Our Advertisers**

## PAARLBERG CHEMICALS

featuring

- Par-Ex Fertilizer
- Vertagreen Fertilizer
- Du Pont Chemicals
- Chipco Chemicals
- Daconil - Dacthal
- Bean Sprayers
- All Major Turf Supplies

Quality • Value • Service

1840 E. 172nd St., So. Holland  
312-474-3086 815-469-6730

## CUSTOM FORMULATED FERTILIZERS

- Granular or Liquid
- Bagged or Bulk Delivery
- Formulated to your specifications at no extra cost

# Tyler

Enterprises, Inc.

Rt. 53, Elwood, IL 60421  
815-423-5808

- Turf Chemicals
- Grass Seed
- R & R Replacement Parts

## KOELPER BROS., INC.

Golf Course Building and Remodeling

444 E. Mors Avenue  
Wheeling, Illinois 60090

312-438-7881  
DANIEL I. KOELPER

312-541-9182  
VICTOR C. KOELPER

## Nels J. Johnson, Tree Experts, Inc.

SINCE 1930

Nels J. Johnson, Sr.  
Nels J. Johnson, Jr. - Karl G. Johnson  
Complete, economical tree service for Private Estates,  
Parks, Municipalities, Golf Courses, Cemeteries,  
Schools, Industrial Areas.

All phases of Arboriculture, Diagnosing, Pruning, Treating,  
Transplanting, Fertilization, Hydraulic and Mist Spraying,  
Removals, Stump Routing, Municipal Forestry, Chemotherapy  
for elms, and other trees.

• FULLY INSURED •

Graduate -- Licensed Arborists

MAIN OFFICE - 912 Pitner Avenue, Evanston, Illinois 60202  
Phones: Greenleaf 5-1877 - GR 5-5255  
Hinsdale, Illinois - FA 5-0970

FOR THE FINEST IN SOD

## THORNTON'S SOD NURSERY

312 - 742-5030

Rt. 2 Box 72

Elgin, Ill. 60120

# ANNOUNCING

two great new brands at Builders

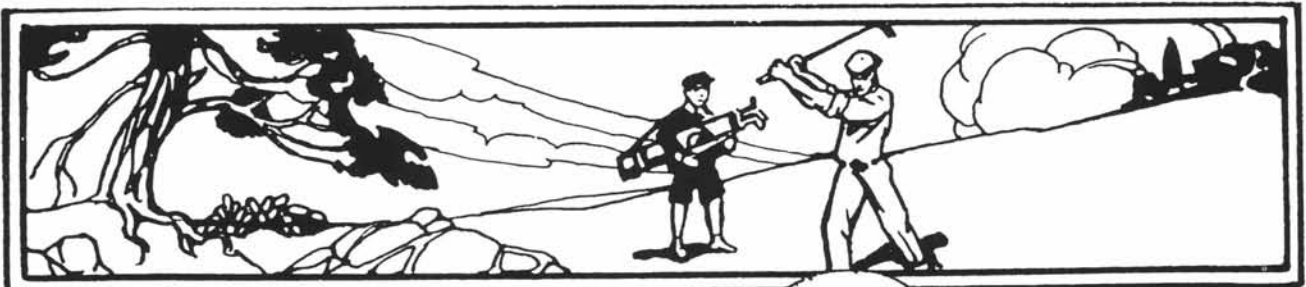
for GREENER TURF AND UNIFORM WATER COVERAGE

## THOMPSON

TURF IRRIGATION EQUIPMENT

## WeatherTec

irrigation products



Builders Plumbing Supply / Irrigation Dept  
133 South Route 53  
Addison, Illinois 60101

(312) 629-8119 department  
(312) 629-8100 switchboard



A good sprinkler  
system is an  
investment to  
last a lifetime

## GOLF COURSE IRRIGATION SALES CO.

Div. of Halloran & Yauch, Inc.  
2040 Lehigh Ave., Glenview, IL 60025

**CUSTOM PUMP HOUSE  
CONSTRUCTION & REMODELING!  
IRRIGATION INSTALLATION  
& REMODELING!  
GOLF COURSE DRAINAGE SYSTEMS!**

Call Us For Your Golf  
Course Irrigation Needs!

**(312) 729-1625**

## BOJO TURF SUPPLY CO.

ALL MAJOR TURF SUPPLIES



- Naiad & AquaGro
- Chemicals
- FMC Sprayers
- Fertilizers
- Tee & Green Items
- Shop Supplies
- Seed & Terra Green
- Plant Marvel
- Safety Equipment
- Marker Paint & Ice Melt

24356 Harvest Hills Road  
Frankfort, IL 60423

815-469-6730

## KILLIAN

DESIGN GROUP INCORPORATED

GOLF COURSE ARCHITECTS

639 First Bank Drive, Palatine, Illinois 60067 (312) 358-8884

## TENNIS COURTS

*Construction — Resurfacing*

M-C Sport Systems, Inc.  
Addison, IL

John Maniscalco

312/628-0500

# SPRING AHEAD! GREEN AHEAD! EVERGREEN

**Quality Greens Cover Protects and Promotes Growth!**

Patented weave construction allows cover to "breathe."

It minimizes risk from high temperatures. Retains necessary warmth for early plant growth.

Evergreen is 85% transparent allowing grass to receive enough sunlight to survive winter cold.

### SPECIAL EVERGREEN FEATURES

- Cover impervious to water
- Resists rot and mildew
- No overlap marks due to one-piece construction

- Six standard sizes:  
12 ft. x 50 ft.  
24 ft. x 50 ft.  
48 ft. x 60 ft.  
60 ft. x 90 ft.  
72 ft. x 90 ft.  
84 ft. x 110 ft.
- Custom sizes available

**SAVE BIG GREEN  
ON EVERGREEN!**

**DISCOUNT  
THROUGH  
SEPT. 30th**



TO ORDER CALL:  
(312) 537-2177

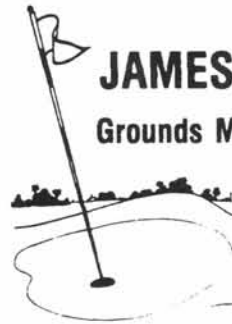
## Arthur Clesen, Inc.

543 Diens Drive • Wheeling, IL 60090

©1988 AC

## JAMES R. BURDETT

Grounds Maintenance Supplies



Post Office Box 52  
Lombard, Illinois 60148  
(312) 620-5558  
Car Phone 802-5656

## NATIONAL CHEMSEARCH CORP.

Russel Fishman  
(312) 432-3588



## Bentgrass in Retrospect

by Roger A. Stewart, Jr., CGCS

In the past seven or eight years we have all heard about fairway renovation to Creeping Bentgrass. Riverside Golf Club was one of the first clubs in the Chicago area to undergo this process and I thought this might be a good time to look back on what we did and where we are now.

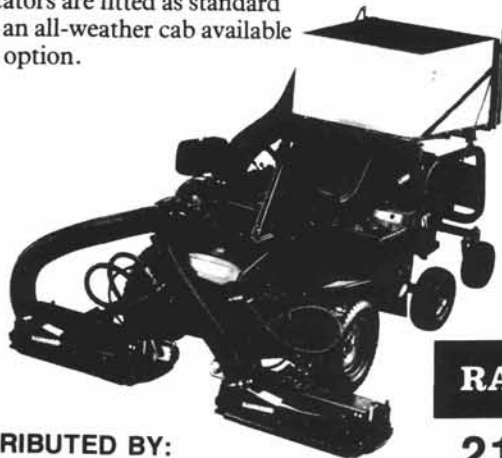
In August of 1982 we began a three year program of bentgrass conversion. The positive effects of what we did are numerous but I limit my remarks to a few. Most noticeable is the reduced irrigation requirement for bentgrass as opposed to **Poa annua**. Basically, we went from a quagmire in July and August, to a firm playing surface year round. An indication of this is that we have only restricted carts from fairway use three times in the last three years. This is a welcome relief to members who were used to coming out on 90°+ days and not knowing if they were going to make it around if carts were restricted. We have experienced little or no damage from carts traversing wilted areas. Our expectations as to the durability of Creeping Bentgrass have been surpassed many times over. Before renovation, our budget for Pythium control alone was over \$12,000.00. Now we spend between \$4,000.00 and \$6,000.00 for the control of that same problem. Our chemical budget hasn't gone up in the last five years. We have also found that we must spend much less time babysitting fairway turf during hot weather and therefore can use that time more productively in the management of our predominantly **Poa annua** greens. An unexpected benefit has been the boost in morale on my crew in July and August because of better turf with less work.

All of this didn't take place without some problems. I knew that the management techniques used after renovation were the real key to the success of the program. We knew we had to reduce our irrigation and stress the **Poa annua** in order to maintain predominantly bentgrass turf. We probably took this principle to the extreme initially, which caused a great deal of consternation amongst my members and my committee. Words like concrete, asphalt, desert, dust bowl began to show up in conversation around the club more often than I liked. I suppose my credibility slipped a little in their mind during those early days in the renovation process. However when I saw the bentgrass respond remarkably to our infrequent but heavy irrigation (3 hours of irrigation on 10-14 days intervals), I knew my convictions were strong and with time my members would see the benefits as well. The question was would they wait long enough? Thankfully, they did. We started out each spring after renovation with about 50% bentgrass, and then the next year it increased to 60% to 70%, and then to about 70% to 80% where it seems to have leveled off. This is a very manageable situation now. This year, one of the hottest and driest on record, the fairways really shine. If we had not done this renovation, the **Poa** would be gone and the quagmire would be back. Yes we have had to water a little more this year, (3 hours of irrigation every 6-10 days) and we do hand water a few dry spots, but we have grass that is alive and providing an excellent playing surface. We have not solved the divot regeneration problem caused by less irrigation but we're still trying. This is a minor irritation for members who ride the fairways every day. We still "greensaire" our fairways, and we use growth regulators,

(continued on page 20)

### Versatility

Rear-wheel steering is light and positive and gives superb manoeuvrability. Individual lift to the wing units allows the cutting width to be reduced by a touch of a lever. Full road lighting and indicators are fitted as standard with an all-weather cab available as an option.



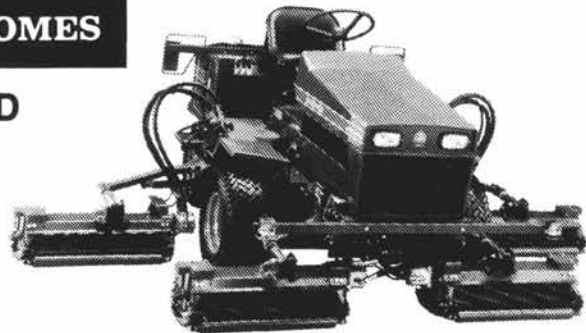
DISTRIBUTED BY:

**Olsen's**

Olsen Distributing Co., 969 N. Pepper Road  
Barrington, IL 60010 • 312 381-9333

**RANSOMES**

**350D**



### Advantages of Hydraulic power

- Simplicity of operation with all controls in easy reach of the operator.
- Infinitely variable forward and reverse speed controlled by single foot pedal.
- Various combinations of units are lifted or lowered into work by the touch of a lever.
- Reverse drive allows easy backlapping and the clearing of blockages.

**RANSOMES**

**213D**

**BENTGRASS IN RETROSPECT** (cont. from page 19) and we use lightweight mowers and less nitrogen fertilizer, all of which have a necessary place in our management plan.

I guess I can say the program was very successful for us. I have not heard of too many instances where this procedure was a failure. However, the greatest successes have been where a solid bentgrass management plan has been followed after renovation. I learned much more than what is written here, but most importantly, I learned the old axiom of "follow your convictions" pays off.

Now all I have to do is figure a fool proof way to keep *Poa annua* out of putting greens!

## 6th Annual Turf Field Day Hubbard, Oregon

I attended the 6th Annual Turf Field Day this past June 16th at Hubbard, Oregon, put on by Turf Seed, Inc. and Pure Seed Testing, Inc., sponsored by Bill Rose and Dr. Bill Meyer.

I reviewed Fred Opperman's **Bull Sheet** article in the August issue last year and he did an excellent job of taking pictures and explaining what is involved in growing certified seed and the steps that have to be followed in growing Penncross bent grass, and other aspects of the seed production and cleaning process.


This year the research farm has been expanded to 110 acres to accommodate many new varieties being grown and evaluated. Walter Fuchs was the only other local person attending from this area. Tom Voigt and Jean Haley, from the University of Illinois, were there, and mentioned their trip at the Turf Field Day at Urbana in July, and said they really enjoyed it. Warren Bidwell represented the Tee-2-Green Corporation.

I feel certain that Turf Seed and Pure Seed will be coming up with new varieties of fescues, perennial ryes, and blue grasses, that are being tested nationally at this time. With the good bents of Penncross, Penneagle and Penn Links proving themselves, it does not seem likely to have new varieties at this time, but there is still more research being done.

## Green Making in the 1600's

The following is a quote from **Way to Get Wealth** by Gervase Markham published in 1613.

"To fit a place for this manner of greene plot, it is requisite that it may be cleansed from all manner of stones and weedes, not so much as the rootes left undestroyed, and for the better accomplishing hereof, there must boiling water be poured upon such endes of rootes as staying behind in the ground cannot be well pulled up, and afterwards the floor must be beaten and troden down mightily, then after this there must be cast great quantity and store of turfes of earth full of greene grasse, the bare earthe part of them being turned and laid upward, and afterward danced upon with the feete, and the beater or paving beetle lightly passing over them, in such sort that within a short time after, the grasse may begin to peepe up and put forth small haire."



2 N 255 County Farm Rd. West Chicago, IL 60185  
Phone: (312) 668-5537

Distributors of:

- Agri-Dianostic Disease Kits
- Acclaim
- Banol
- Subdue
- Banner
- Naiad

## BROOKSIDE SOIL TESTING and IRRIGATION WATER ANALYSIS

includes a complete report, and recommendations for producing quality turf on golf courses.

### ADVANTAGES:

- Improves the environment of the grasses and eliminates turf diseases
- Decreases expenses for pesticides
- Reduces thatch and eliminates fairway renovation
- Decreases expenses for costly fertilizers
- Healthy turf attracts more golfers and increases income

### Contact:

Golf course specialists for over 20 years

**V. J. Zolman and Son**  
2618 Harvey Avenue  
Berwyn, Illinois 60402

Phone: (312) - 788-4565  
(312) - 461-3679