

### 1987 Board of Directors

<b>President</b>	Jim Evans (Debby) Turnberry C.C.	Home: 815-455-3994 Office: 815-459-8570
<b>Vice-Pres.</b>	Mike Nass (Jean) Cantigny Links	Home: 462-1547 Office: 668-5170
<b>2nd Vice-Pres.</b>	Alan Fierst Oak Park C.C.	Home: 456-7815 Office: 453-7525
<b>Sect'y.-Treas.</b>	David Meyer (Penny) Indian Lakes C.C.	Home: 820-1040 Office: 529-0200
<b>Exec. Secretary</b>	Penny Meyer (David) MAGCS Mailing Address P. O. Box 248, Eola, IL 60519	Office: 820-8181
<b>Board</b>	Brian C. Chalifoux (Carol) Olympia Fields C.C.	Home: 481-1778 Office: 748-0495
	David E. Louttit Innsbrook C.C.	Home: 219-663-3830 Office: 219-980-3107
	Ray Schmitz (Jan) Flossmoor C.C.	Home: 815-469-2773 Office: 798-2498
	Bruce Williams (Roxane) Bob O'Link G.C.	Home: 680-1074 Office: 432-0088
	Dennis Wilson (Pat) Sunset Ridge C.C.	Home: 441-8387 Office: 446-5222
<b>Pres. Emeritus</b>	Dave Behrman (Chris) Deer Creek G.C.	Home: 748-5320 Office: 672-5887

**Official Photographer** Raymond Schmitz

## ECKHOFF AWARD

For Excellence In Golf Journalism



We are not copyrighted and would like to share our articles with any who would like to use them, but please give the author and "The Bull Sheet" credit.

#### Editor —

**Fred D. Opperman, CGCS**  
1022 Shady Lane  
Glen Ellyn, IL 60137  
Phone (312) 469-3444

**Bull Sheet** printed by Ever-Redi Printing, 5100 East Ave., Countryside, IL 60525.

The **Bull Sheet** is published once a month. All articles are required by the 10th of the month to make the next issue. Advertising is sold by the column inch, by the quarter page, half page, and by the full page. All artwork to be finished and in black and white. Circulation is over 500 issues per month.

## President's Message

Believe it or not, we have only about four weeks of hot summer weather remaining for this season. Within the next month, we will be planning and preparing for our fall projects once again. It was really nice to have a week of cool weather in mid-July to break up the string of 90° plus days. The first two weeks in July provided excellent pythium weather. I hope the dog days of August are cool enough to prevent turf loss and prevent us from losing our sanity.

If you are looking to get away from the golf course for a day, or want to gain some valuable information on turfgrass research, try to attend the Illinois Turfgrass Foundation Field Day on Thursday, August 6. The University of Illinois presents to all the professionals in the turfgrass industry a half-day tour of the turf plots and on-going research. The presentation includes current research and continuing studies on herbicides, insecticides, fungicides, growth regulators, cultivar evaluations, and management studies. By attending the field day we show our support for the University of Illinois. We also receive a tremendous amount of valuable information from researchers and cohorts in the industry. I would hope to see more superintendents from the Chicago area attend the field day this year than has been the case in past years.

The July 14th meeting at the Village Greens of Woodridge was very well attended with 93 golfers and 120 for dinner. The weather was absolutely perfect for mid-July and the golf course was in excellent condition considering the summer heat and drought stress. I want to thank Len Berg and all the friendly people on staff there for their hospitality and a very enjoyable day. The next M.A.G.C.S. meeting will be at Turnberry Country Club on August 24. I hope many members of the association can attend this meeting and enjoy the golf course and the newly remodeled clubhouse.

M.A.G.C.S. will be having a hospitality tent set up at the Western Open at Butler National Golf Club. The dates are Friday, Saturday, and Sunday, August 21, 22, and 23. The tent will be open from 11 to 3 with each day being split into two, two-hour shifts. Each session will have a Midwest director in attendance plus one or more volunteer members. We will again be passing out pamphlets and any other information on the profession of golf course superintendent. If anyone has any ideas for appropriate displays in the tent or would like to help, please contact me or Mike Nass as soon as possible. We want to make this year's tent a success.

Finally, the nominating committee, chaired this year by Dave Behrman, is looking for a few good men to become candidates to run for M.A.G.C.S. director. We feel the present board is very strong. But as directors move up the ladder and finish their tenure on the board, the vacancies that remain must be filled with good quality candidates. We are looking for Class A superintendents who attend meetings regularly, have helped on a particular committee, or who show a willingness to become involved in the activities and functions of M.A.G.C.S. If you or someone you know is interested in helping M.A.G.C.S. continue to progress forward, contact Dave Behrman as soon as possible.

**James E. Evans**

## Director's Column



### Dennis C. Wilson Biography

- Work Experience:** Sunset Ridge Country Club  
1964 till present  
Assistant Superintendent — 1971-1977  
Superintendent — 1978-present
- Education:** Eight-week Turf Course at University of Ill. — 1967  
A.S. Degree from Rutgers University
- Married:** Wife — Pat
- Children:** Amy - 13; Michael - 11; Megan - 6
- Hobbies:** Enjoys golf, bowling, working with Cub Scouts and school functions

### Pearlwort — Old Weed New Problem

by Dennis C. Wilson, Supt.  
Sunset Ridge C.C.

In the sixties, while cutting greens, I noticed three dark green patches of grass, each about as big as a half dollar. They were always green no matter when the conditions. So I decided it was a new type of Bent and I would be famous — cars, boats and girls. I would have it all. About a week or so later, Dom Grotti, former Supt. of Sunset Ridge Country Club, asked me if I had noticed the pearlwort on three greens. Pearlwort, I asked, you mean my super grass is a weed? Yes, Dom said, now get a cup changer and plug out that weed.

That wasn't the end of the pearlwort. It seems we get a little infestation on one or two greens a year.

Turf Management by H. Burton Musser reads, "Pearlwort (*sagina procumbens*) is a viny perennial that spreads by creeping stems which root at the joints. It tolerates close clipping and forms solid patches on greens that closely resembles a fine-textured grass." Turfgrass Science and Culture by James B. Beard states, "Pearlwort or birdseye is a creeping broadleaf type perennial that vegetates by stolons." The best method of control is use of a strong, vigorous grass. Selective treatments of herbicides such as Dicamba, Endothall or Mecoprop will give marginal control.

I have tried going around with a plastic spray bottle and spot treating each problem, to treating whole greens in spring and fall with Dicamba with some success. I don't want to push the greens by raising the height of cut or using more Nitrogen in order to check its spread.

Talk about turnabout, my supergrass has turned into a super headache.

## Turf-Seed, Inc. Field Days

by Fred Opperman, CGCS  
Glen Oak C.C., Glen Ellyn, IL

On June 17, 18, and 19, 1987, I had the pleasure of visiting the seed testing plots of Turf-Seed, Inc. in Hubbard, Oregon. The first day, our group was given a tour of golf courses in the Portland area. Our tour guide was Dick Malpass, ex-president of the GCSAA and a retired superintendent of the area. The courses we saw were almost 100 percent *Poa annua*. The giant Cyprus and Douglas Fir trees were spectacular when they lined the fairways and were the backgrounds for the greens. Some of these trees were pushing 100 feet with a diameter of 5 to 6 feet. The most serious problem the courses have is controlling pink snowmold for about 6 months of the year. Golf is played all 12 months of the year. They average only 14 inches of snow, and it usually melts after a few days. Lots of misty weather and rain.

The second day, we toured some growers' fields in the morning and saw how Pennncross and Penneagle are grown for seed production. We got into the fields with the growers and learned of their trials, tribulations, failures, and successes. The procedure for growing a certified bent like Pennncross is very strict and controlled. It is closely watched over by the state of Oregon, Turf-Seed, Inc., and the patent holder, Penn State. The following are the steps taken to put certified blue tag seed on your course:

- ★ Improved turfgrass varieties are developed by either a private breeder, company, or university.
- ★ Breeder seed from varieties selected for performance and seed yield is grown in 1/10- to 1/4-acre insulated breeder blocks.
- ★ Foundation seed is multiplied in 5-acre plots for distribution to selected growers.
- ★ Seed growers check field history in accordance with certification procedures so that no conflicting species or varieties are planted on the same ground.
- ★ Foundation seed is charcoal planted, part of the extra care that contract growers take to assure a quality product. (This means that the seed is disc seeded on, say, 3-foot centers, and a slurry of charcoal is sprayed over the top of this row in a 1-inch band. Then the field is sprayed with Karmex to kill any and all weeds and grasses between the seeded rows. The charcoal absorbs the herbicide, and the selected seeded species can then grow with no competition).
- ★ A certification specialist from Oregon State University inspects the seedlings.
- ★ Fieldmen from the breeders assess and solve problems as they arise.
- ★ Another certification specialist inspects the field prior to harvest.
- ★ The grower harvests his crop, making sure accurate records are kept and the equipment is free of contaminants.
- ★ The seed is cleaned and bagged in one of more than 200 commercial and 30 private cleaners and then given a lot number that traces the seed back to its production field.
- ★ A seed certification sampler draws a random sample to be analyzed at the Oregon State seed lab.
- ★ The seed sample is analyzed for weed seed, off-types, other species, and inert matter.

(cont'd. page 4)

## Executive Blend BLUEGRASS SOD

**THE BLEND**—Combination of 5 disease resistant cultivars chosen on the basis of adaptability to a variety of growing conditions.

**SOIL TYPE**—820 irrigated acres of sandy loam mineral soil.

**ROOTING**—Rapid establishment in any soil type with less water.

**SERVICE**—On-Time—Radio Dispatched—Forklift Delivery.

**PENNCROSS  
CREEPING BENT  
SOD** | 75%  
Sand Base



Quality Supplier of  
Seed, Fertilizer,  
Chemicals, and  
Equipment.

**HUBER RANCH  
SOD NURSERY INC.**

Schneider, IN 219/552-0552

- IN 800-553-0552
- IL 800-553-0554

## LESCO ELITE Fertilizers



**A complete new line of small-particle sulfur-coated urea fertilizers specially designed for low-cut turf.**

**ORDER  
NOW**

**LESCO**

LESCO, Inc. • 20005 Lake Road • Rocky River, OH 44116  
Cleveland 333-9250

**(800) 321-5325**  
NATIONWIDE

**(800) 362-7413**  
IN OHIO

★ When all tests are passed, Oregon State awards the certification.

★ The seed certification sampler then returns to the warehouse and attaches Oregon certification blue tags to the bags of seed.

★ This blue tag is your assurance that the variety name on the bag is the same seed that you plant.

The afternoon of this second day, we attended the 5th Annual Turf Field Day held by Turf-Seed, Inc. Bill Rose and Bill Meyer had a beautiful 66-acre test facility. Believe me, there wasn't a blade of grass out of place. It was darn near impossible to find a weed in their test plots. Dr. Bill Meyer told me he is testing 96 varieties of turf grasses. This is the 13th year that Pure-Seed Testing has been conducting grass breeding and evaluation at this location. Turf-Seed, Inc. is involved in the contract production of 21,000 acres of certified grass seed production along with small acreages of wild flowers and sugar beets. The trade name of their wildflowers is "Bloomers". The sad part of this tour was learning that our bent seed will still be in short supply this coming fall. But in 1988, the production will be there, for more fields are being contracted to grow bent. All we need is good growing and harvesting weather for the 1988 crop.

The morning of the third day, we visited more growers' fields and saw more of the equipment used in this industry. We also saw a demonstration of crop spraying by two planes. Afterwards, the planes landed in our field so we could get a first-hand look into this aerial acrobat.

The equipment the growers' used looked just like ours on the golf course and for the most part has been modified by the various growers to fit into their operations. We visited one grower to whom I gave the title of "Dr. Tinker". This guy hardly had a standard piece of equipment. He even made a spray wagon that would follow him in the field while he walked, killing the weeds and other grasses not allowed among that certain species. This machine was fastened to his belt by a flexible cord on a spring, and this 150-gallon, three-wheel vehicle would follow him like a dog at heel. If he stopped, the machine would stop; if he turned left or right, the machine would follow at his pace. From this one machine, he had three hoses so three men could walk a field and cover a wider area. He was quite an interesting grower.

The procedure for planting Pennncross for seed production is the following: The area to be planted for seed has had a row crop on it for a couple of years. The area is prepared in the fall of the year, plowed, disced, and leveled. The area is allowed to sprout weeds, and these, in turn, are killed by using "Round-Up". A second application is used in the fall, if required. This is done again in the spring after any sprouts emerge. The field is then spring planted by hand using a spacing of 40-inch rows with the Pennncross stolon/sprig hand planted every 18 inches. It takes about two-thirds of a square foot of stolon bed to plant one acre. After a couple of weeks, a herbicide spray is used to kill any broadleaf weeds. The rows of Pennncross are planted in the three clones of Pennlu, 9(38) (5), and 11(38)4. Remember that Pennncross has three parents, and as the field is planted, one row will be Pennlu, one row 9(38) (5), and the third will be a row of 11(38)4. In the field, you can see the difference between the three clones. These clones will then cross-pollinate,

(cont'd. page 6)



# Schroeder's Nursery, Inc.



TREES

• SHRUBS •

EVERGREENS

RICHARD A. SCHROEDER  
DON VIRGENS  
CARL DRAVIS

Specializing in Large Caliper Trees  
We offer complete installation

TELEPHONE: 312 — 546-9444

23379 W. Route 60 — Grayslake, Illinois 60030  
Located on Route 60 between Rt. 12 (VOLO) & Rt. 83 (IVANHOE)



## B. Haney & Sons, Inc.

### COMPLETE TREE SERVICE

- TRIMMING • SPRAYING •
- SELECTIVE CUTTING •
- STUMP REMOVAL •
- WOOD CHIPS •

WE "CARE"  
FOR YOUR TREES

(312) 678-7809

3344 Lincoln St., Franklin Park, IL 60131



LAWN CARE

Weed, Insect, Disease Control;  
Fertilizing, Core-aerifying, Slit Seeding

HYDROSEEDING

TREE CARE

Tree Spraying, Feeding,  
Surgery, Trimming, Removal

PRAIRIE SEEDING

3524 LONG GROVE ROAD  
LONG GROVE, ILLINOIS 60047 (312)438-5161

## PAR EX PROFESSIONAL PRODUCTS<sup>®</sup> with IBDU<sup>®</sup>...with IBDU/SCU<sup>®</sup>... with ADDITIVES.



### PROFESSIONAL PRODUCTS for PROFESSIONAL TURFGRASS MANAGERS.

We formulate our products to satisfy the regional nutritional requirements of your turf. Many of these mixes contain our exclusive nitrogen source, IBDU<sup>®</sup>, or our exclusive mixture IBDU/SCU<sup>®</sup>. We are now offering the best additives in our mixes: Ronstar<sup>®</sup>, Dacthal<sup>®</sup>, Balan<sup>®</sup>, Dursban<sup>®</sup>, Oftanol<sup>®</sup>, and others.

Check with your local Par Ex  
Territory Manager or Par Ex Distributor.

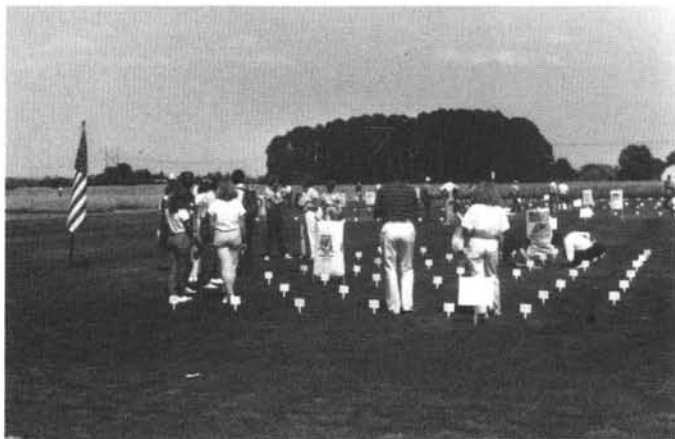
**par ex**  
PROFESSIONAL PRODUCTS

Territory Manager  
**Thomas E. Skinner**  
Keokuk, IA  
319/524-8912

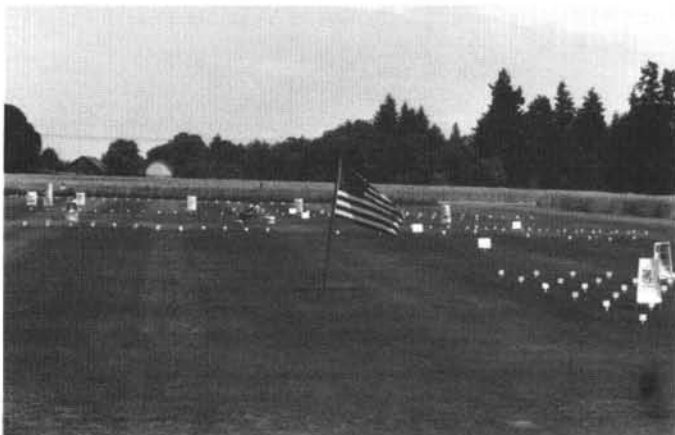
**Turf Products Ltd.**  
West Chicago, IL  
312/668-5537

RONSTAR<sup>®</sup> is a registered trademark of RHONE-POULENC, INC.  
DURSBAN<sup>®</sup> is a registered trademark of DOW CHEMICAL, USA

DACTHAL<sup>®</sup> is a registered trademark of S.D.S. BIOTECH  
\*OFTANOL is a registered trademark of the Parent Company  
of Farben Fabriken-Bayer, GmbH, Leberkosen



1. The bluegrass test plots at Turf-Seed, Inc., Hubbard, Oregon.



and the seed they produce will be certified Penncross. This seed field will be harvested for about 4 years; and after that time, it will be killed off, and a row crop will be planted for a couple of years before it will go back into a grass seed crop field.

The planting of Penneagle is different since it is a seeded bent. It is planted as mentioned earlier by being seeded with a charcoal band sprayed over it, and then the field is sprayed with Karmex to kill any and all other grasses and weeds. But the amazing thing is the rate of seed per acre. Would you believe (those of us who have seeded tees, greens, and turf nursery at a rate of 2 to 5 pounds per 1,000 square feet) that the seeded fields for Penneagle seed production is seeded at 15 grams per acre! One ounce equals 31.1035 grams. So, the growers are using less than 1/2 ounce of seed per acre! They have to mix the seed with four parts of corn meal to get the rate down that low. Heck, we lose that much seed between the bag and the spreader. But they have to seed so low for a higher seed rate per acre. If they seeded any higher, the field would be a mess, and the harvesting machine could hardly get through.

We also got a chance to tour a couple of seed cleaning plants. Here again, it was impressive to see the lengths they go to to keep the seed clean and separate from each other.



2. The hay racks used to transport the crowd around the 66-acre test plots.



3. A stand of cereal rye in which various seed plots are established in about a 15' x 15' plot. The cereal rye prevents cross-pollination.



4. A propane burner which burns off the fields at the end of the harvest.

# POA ANNUA FREE BENT GRASS SOD

Grown In Fumigated Soil  
Free from Foreign Strains of Grass and Weeds

- PENNCROSS BENT SOD
  - PENNEAGLE BENT SOD
  - XL-100 BLEND SOD
  - A FULL LINE OF LANDSCAPE SUPPLIES
  - DECORATIVE STONE
  - LANDSCAPE TIMBERS
- Illinois' largest sod grower

**HE SOD**  
nursery, inc. 

3900 West 167th Street,  
Markham, IL 60426  
312-596-7200

The Wetting Agent with Proven Results.  
Over 800 Golf Courses in the U.S.A.  
use NAIAD Central Injection Systems.

## THE LOOK . . .

Greener. More Uniform Turf Color. Including Banks And Slopes

## THE SAVING . . .

More Irrigation Water Goes Directly Into The Soil.  
Minimal Run-Off On Banks And Slopes  
LESS Irrigation Water Used. LESS Labor Is Needed.  
LESS Electrical Pump Energy Required.

## THE EASE . . .

One-Step Application. NAIAD  
Metering Pumps Inject NAIAD  
Directly Into Irrigation  
System. Or Use The  
NAIAD Drencher  
Tool For Trouble  
Spot Appli-  
cations.



# Naiad

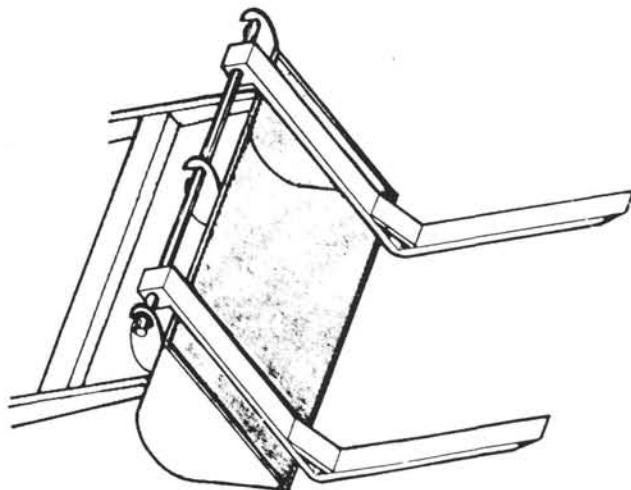
Turf Products, Ltd.  
2 N 255 County Farm Rd.  
West Chicago, IL 60185  
(312) 668-5537 / 231-8441

Bo Jo Turf Supply Co.  
24356 Harvest Hills Rd.  
Frankfort, IL 60423  
(815) 469-6730  
Home Office: Naiad Co. Pleasanton, CA (415) 462-5855

# THE DIFFERENCE

## CTI FORKS

Make your tractor-loader more versatile  
with CTI forks.



**Martin Implement Sales, Inc.**  
16400 South 104th Avenue  
Orland Park, IL 60462  
312-349-8430

**the  
bruce  
company**

(608) 836-7041

OF WISCONSIN, INC.

**LEE BRUCE**  
GOLF COURSE CONSTRUCTION

2830 W. BELTLINE HWY. • P.O. BOX 330  
MIDDLETON, WI 53562

**BROUWER**  
TURF EQUIPMENT LIMITED

**Triplex-376 mower**  
A TRULY PROFESSIONAL TRIPLEX MOWER



For Quality Equipment, Service & Parts, Contact



**CHRISTENSEN  
POWER  
EQUIPMENT INC**

**815-469-5898** MANHATTAN-MONEE RD.  
FRANKFORT, IL 60423

## Irrigation Engineering Co.

...SOUND ENGINEERING and QUALITY MATERIALS

Your Exclusive

**Weather  matic**  
LAWN AND TURF IRRIGATION

Distributor



9242 BROADWAY • BROOKFIELD, IL 60513  
(312) 485-6023



2 N 255 County Farm Rd. West Chicago, IL 60185  
Phone: (312) 668-5537

### PEERLESS FENCE CO.

3N381 Powis Rd.  
West Chicago, IL

- Chain-Link Fencing
  - Wood Fencing
  - Special Gates
  - Driving Range Fencing
  - Tee Protection Fencing
  - Wood & Steel Guard-Rails
  - Golf Course Work Our Specialty
- 312/584-7710 **Hal Laman**

"Golf Course Work a Specialty"  
**LEMONT PAVING CO.**  
Lemont, IL 60439

Jim, Tracy, Ray Murphy

257-6701

## WHOLESALE SUPPLIER for



LAKE COOK  
FARM  
SUPPLY

Landscapers • Nurserymen • Golf Courses

- Turf and Agricultural Chemicals
- Common and Elite Turf Grass Seed
- Union Fork Tools
- Peat Moss — Bark — Mulches
- Root Lowell Sprayers
- Shaws and F.S. Fertilizers

### CUSTOM BLENDING OF BULK FERTILIZERS OUR SPECIALTY

Pickup or Delivered from our Bulk Fertilizer Plant  
Custom Fertilizer Spreading Available

DISTRIBUTORS OF F.S. PETROLEUM PRODUCTS

**GASOLINE • LUBE OIL • DIESEL FUEL**



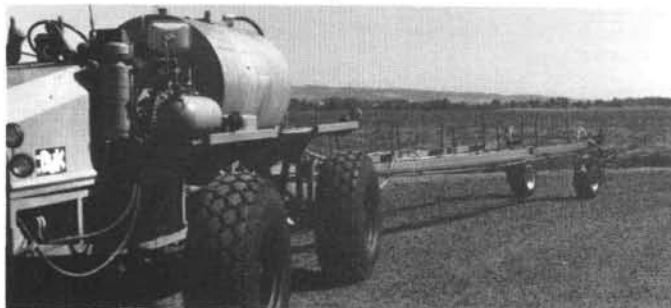
**LAKE COOK FARM SUPPLY**

PETROLEUM  
DIVISION  
101 E. MAIN ST.  
LAKE ZURICH, IL 60047  
540-0100

TURF  
DIVISION  
1214W NORTHWEST HWY.  
PALATINE, IL 60067  
991-4800

BULK FERTILIZER  
PLANT  
170 CEDAR AVE.  
LAKE VILLA, IL 60046  
356-9600

## Field Day Pictures



5. This is a "Rubber Duck" spray wagon with a 60-foot boom.



6. Another "Rubber Duck" with the seed disc behind. The tank would hold the charcoal slurry to be sprayed over the seeded rows.



7. Tony Meyer and Walter Fuchs, Jr. in front of a John Deere Turbo 7720 seed harvester on one of the growers' farms.



8. A crop spraying plane that sprays 5 gallons per acre and can do 40 acres per load. The plane has a 275-gallon capacity.



9. Standing in a field of tall fescue that will be harvested this year.





10. Tony and Walter looking a little bored — don't know why with Pam standing nearby.



11. Your Editor checking Pennlu in a field of Penncross that will be harvested this year. You can spot Pennlu; being a darker color, it stands out. It is planted every third row, as you can see as you look across the field.



12. Tony and Walter checking a newly sprigged field of Penn-cross. This field won't be harvested until 1988.



13. A field that was just swathed in preparation for seed harvest. The field is swathed first and left to dry for "x" number of days, depending upon the humidity and sunlight. Then the large harvesting machines go up and down the swathed rows picking off the seed.

## PRECISION BLENDED TOP DRESSING

Custom blended to your specifications  
by our modern equipment.

*Buy when you need —  
Eliminate costly storage*

We sell an air-dried, uniform and  
free flowing top dressing.

*ASK THE MAN WHO HAS USED IT.*

**HUMUS — BLACK SOIL**

## HENRY FRENZER

Area Code 312  
658-5303

620 Webster St.  
Algonquin, IL  
60102

## Does Your Tree Have ...Yellowing Leaves? ...Bare Branches?

*If it's an Oak, Maple or Birch,  
Your Tree May Suffer From  
Alkaline  
CHLOROSIS!*

**NOW, RESTORE YOUR TREE  
TO GOOD HEALTH**

with

  
**We save trees.**

Steve L. Skinner  
160 First Street, P.O. Box 692  
Batavia, Illinois 60510

(312) 879-2873



# Introducing the art of application for maximum germination.

		POUNDS OF SEED	
SEED		SEED	
TYPE	BRAND	5	
BENTGRASS	PENNEAGLE	.4	
	PENNCROSS	.2	
KENTUCKY BLUEGRASS	ASPEN		
	RUGBY		
	PARADE		
FESCUE	SCALDIS HARD		
	RUBY CREEPING RED		
	GALWAY TALL		
RYEGRASS	PENNEFINE		

## The new Ryan® Mataway Overseeder® is simply better.

Better results begin with the basics, like seed calibration. An easy-to-read chart on the Mataway Overseeder tells you the exact setting for pounds of seed needed per 1,000 sq. ft. There's no need for complicated, time-consuming formulas. Just look it up, load it up, select setting, and you're ready to go.

## Accurate and Efficient Application.

Two-inch spacing between rows gives you a dense pattern for one-pass application. Gandy® precision metering and a disc-type seed delivery system places the seed directly into the slits for uniform seed/ground contact and maximum germination.

The result is a lusher, thicker lawn. And more satisfied customers.

## Ease of operation.

The new Ryan Mataway Overseeder is the only overseeder you'll find that gives you the flexibility to power rake, overseed, or to do both at the same time. It's so simple the seed delivery system can be removed with just four pins.

Front-wheel drive means better control and less operator fatigue. Seed flow stops automatically when crossing sidewalks and driveways.