

**THE BULL SHEET, official publication of the  
MIDWEST ASSOCIATION OF GOLF COURSE  
SUPERINTENDENTS.**

**1987 Board of Directors**

<b>President</b>	Jim Evans (Debby) Turnberry C.C.	Home: 815-455-3994 Office: 815-459-8570
<b>Vice-Pres.</b>	Mike Nass (Jean) Cantigny Links	Home: 279-7063 Office: 668-5170
<b>2nd Vice-Pres.</b>	Alan Fierst Oak Park C.C.	Home: 456-7815 Office: 453-7525
<b>Sect'y.-Treas.</b>	David Meyer (Penny) Indian Lakes C.C.	Home: 820-1040 Office: 529-0200
<b>Exec. Secretary</b>	Penny Meyer (David)	Office: 820-8181
MAGCS Mailing Address P. O. Box 248, Eola, IL 60519		
<b>Board</b>	Brian C. Chalifoux (Carol) Olympia Fields C.C.	Home: 481-1778 Office: 748-0495
	David E. Louttit Innsbrook C.C.	Home: 219-663-3830 Office: 219-980-3107
	Ray Schmitz (Jan) Flossmoor C.C.	Home: 815-469-2773 Office: 798-2498
	Bruce Williams (Roxane) Bob O'Link G.C.	Home: 680-1074 Office: 432-0088
	Dennis Wilson (Pat) Sunset Ridge C.C.	Home: 441-8387 Office: 446-5222
<b>Pres. Emeritus</b>	Dave Behrman (Chris) Deer Creek G.C.	Home: 748-5320 Office: 672-5887

**Official Photographer** Raymond Schmitz

**ECKHOFF AWARD**

For Excellence In Golf Journalism



We are not copyrighted and would like to share our articles with any who would like to use them, but please give the author and "The Bull Sheet" credit.

**Editor —**

**Fred D. Opperman, CGCS**  
1022 Shady Lane  
Glen Ellyn, IL 60137  
Phone (312) 469-3444

**Bull Sheet** printed by Ever-Redi Printing, 5100 East Ave., Countryside, IL 60525.

The **Bull Sheet** is published once a month. All articles are required by the 10th of the month to make the next issue. Advertising is sold by the column inch, by the quarter page, half page, and by the full page. All artwork to be finished and in black and white. Circulation is over 500 issues per month.



**President's Message**

Spring is right around the corner. Hopefully, the mild winter and early, warm weather will not change to our typical cold, wet spring. All indications point to another early, warm, dry spring similar to 85 and 86. The turfgrass that I have seen this spring looks healthy and ready to break dormancy. Thankfully, we have avoided desiccation, crown hydration, or severe winter disease damage. Everyone was surprised at the early, summer-like weather conditions that occurred during the first weekend of March. The golfers were ready to play, however, course conditions certainly did not warrant heavy play. In many cases, the greens were wet, soft, and frozen below the grass surface. It is difficult to convince club officials and members to stay off the greens when the weather is near perfect for golf. The decision to open or close greens should be made only by the course superintendent. We are the ones that have to live with all decisions pertaining to the golf course.

As was announced in the March issue of the **Bull Sheet**, Pat Klein, superintendent at Hillcrest Country Club and M.A.G.C.S. member died on February 21 at the age of 27. Pat fought courageously for over two years against cancer. Surviving are his wife, Sue, and two children, ages four and two. At a young stage of life, Pat had proven to be a good family man, and a conscientious, dedicated superintendent that truly loved his work. On behalf of M.A.G.C.S., we express our deepest sympathy to family and friends who all feel a tremendous loss. To help with some of the financial burden the family will encounter, the Patrick E. Klein Fund has been established for those who wish to donate some money for a very worthy cause. For more information, look in this issue of the **Bull Sheet**, or call me, or Bruce Sering at the Glen View Club. Also, I'm happy to report the proceeds from the Annual Gin Tournament held March 23 will be donated to the Klein family.

I want to thank the membership of M.A.G.C.S., Inc. for the prompt remittance of their annual dues payments. We had over 95% of all dues paid before the March 1 deadline which has to be a record. This demonstrates a continued strong interest in support for the programs M.A.G.C.S. provides for its members. Membership this year will probably reach the 500 mark for the first time, including almost 200 voting members, making us the third largest chapter association in the country. In voting strength, we are not far behind the Northern Ohio Chapter or the Florida Chapter. The Chicagoland area happens to be the golf center of the world containing the best maintained golf courses anywhere in the world. Eventually, we will constitute the largest and most active membership of any chapter

## PRESIDENT'S MESSAGE (cont'd from page 2)

association in the country. If you know a fellow superintendent, assistant superintendent, golf course employee or others interested in promoting the M.A.G.C.S., encourage them to join. We welcome any new members interested in becoming active members. We want people to attend our monthly meetings on a regular basis and have a positive influence on the association.

The publication you are reading right now, the **Bull Sheet**, has recently received the Eckhoff Award from the National Golf Foundation. This is the third year we have received an award from N.G.F. This year we won first place for excellence in golf journalism. Our congratulations to editor, Fred Opperman for the fine job he has done in editing, assembling, and improving the quality of the **Bull Sheet**. We would also like to thank the companies that advertise and purchase column space to help support the success of our monthly publication.

The first M.A.G.C.S., Inc. golf outing of 1987 will be held at Inverness Golf Club in Palatine on Thursday, April 23. The golf and arrangements committee have done a fine job of organizing the days activities and golf event. I personally would like to see more of our meetings scheduled during a week day other than Monday. Monday is definitely the busiest day of the work week for us. The course is closed, so we schedule special projects for Monday. Many times it is difficult to leave the course because of the heavy work load. Tuesday and Thursday are usually slower days that afford more time to get away from the golf course. Hopefully, the weather on the 23rd will be beautiful, and we will have an opportunity to golf and enjoy the comradeship of our friends and fellow superintendents.

James E. Evans

## Bruce Williams Biography



Bruce R. Williams has been a superintendent for eight years — all at Bob O'Link Golf Club, where he served as assistant superintendent and moved up to replace his father, Bob, when he retired. Bruce has been a Director of the MAGCS for three years. He has served both as the Arrangements & Education Chairman in this time. On the National scale he has served two years on the GCSAA Education Committee and is presently serving on the Certification and Public Relations Committee. Bruce is a past President of the Chicagoland GCSA. Besides serving on various committees, he has found time to write many articles both for our newsletter and our national magazine. Bruce and Roxane have two children, Blake age 5 and Claire who is 1.

## Director's Column

### Earthworms — Friend or Foe?

by Bruce R. Williams, CGCS  
Bob O'Link Golf Club

Earthworms are present in most topsoils throughout the humid areas of the United States. They eat organic leaf litter and thatch. While there are 5 families and 1800 species of earthworms reported there are only a few genera which affect golf course turf. These include **Lumbricus terrestris**, **Allolobophora longa**, and **Allolobophora nocturna**. These species form permanent burrows (verticle) and do not burrow laterally unless food becomes scarce.

Over the years earthworms have been praised by turf managers for their role in thatch reduction. Many people think of them as nature's aerators. There is no question that the earthworm has had a positive impact on golf course turf. The only negative aspects reported, until recently, were the castings (feces) left behind on the finer maintained playing surfaces (greens & tees). It is not my intention to dispute the beneficial effects of earthworms.

In the 1980's we have seen great improvements in the playing conditions of fairways. Most noticeably there has been a reduction in the height of cut on bentgrass fairways. Triplex mowing has enabled us to reduce the height of cut from the 3/4 - 1 inch range to the 1/2 - 5/8 inch range. It may only be coincidental but earthworm activity is much more noticeable under the reduced height of cut. The elimination of Bandane, Chlor-dane, and arsenicals in the late 1970's may also have contributed to increases in the earthworm population.

One acre can contain as many as 3,000,000 earthworms which weigh 1,800 pounds and can produce 25 tons of casts each year. In the Spring, when soil temperatures are in the 40-50 F range, earthworms are most active and it is not common to see as many as 20 casts per square foot. These casts are an attempt to clean out tunnels and are composed of soil and feces.

Earthworms, like canadian geese, pose no problem with their mere existence but rather by their byproducts. Casts are often so prevalent that fairways look as though they were recently aerated. This can have a negative effect on playability. The castings begin to take their toll on mowing equipment and can adversely affect reels and bedknives. Aesthetics are reduced on this fine turf.

The dilemma we face is whether the beneficial factors of earthworms outweigh the negative factors. This must be judged by the individual Golf Course Superintendent. There is no clear-cut point of economic threshold. If you have a problem there is very little information regarding control and no materials labeled specifically for earthworm control.

While treating for other pests we have found that some chemicals will reduce the earthworm population. Benomyl seems to act as an irritant and sends earthworms deeper into the soil without killing them. The casts are eliminated with this material and we may still derive the beneficial effects. Turcam, Orthene, and carbaryl will reduce the population. The synthetic pyrethrins will bring earthworms to the surface for collection.

At present there aren't any noticeable side effects from the control of earthworms on fairways. Mechanical aeration has improved and may compensate. Thatch is being managed with clipping removal but we might need vertical mowing if a problem develops in the future.

## RICHMOND FISHERIES

RICHMOND, ILLINOIS



### YOUR NORTHERN ILLINOIS DISTRIBUTOR OF TRIPLOID WHITE AMUR

- Now Legal in Illinois for BIOLOGICAL control of Nuisance Aquatic Weeds & Algae
- Order now to secure May/June Delivery
- Call or write for Recommended Stocking rates
- Delivery and Stocking is Available to Guarantee Good Survival

8609 CLARK ROAD  
RICHMOND, IL 60071  
815-675-6545

## LESCO ELITE Fertilizers



**A complete new line of small-particle sulfur-coated urea fertilizers specially designed for low-cut turf.**

**ORDER  
NOW**

# LESCO

LESCO, Inc. • 20005 Lake Road • Rocky River, OH 44116  
Cleveland 333-9250

**(800) 321-5325**  
NATIONWIDE

**(800) 362-7413**  
IN OHIO

—Save—

## “Mondays — Golf Course Maintenance Day”

by Julius Albaugh, Westmoreland C.C.

The policy at many private clubs for a number of years has been to close the golf courses on Mondays to allow for maintenance of the golf courses. A few years ago this policy started to show signs of erosion when several private clubs opted to use a few Mondays a year for private outside parties. These parties have been a lucrative source of income for private clubs and golf course maintenance has been able to survive because the parties have been kept in moderation. A good policy to follow when scheduling special Monday events is to never book them on consecutive Mondays or on Mondays prior to Holidays or key mid-week golfing events.

In recent years many private clubs have experienced a more active golfing membership. This increased golfing activity has resulted in delays in tee-off times and crowded golf course conditions. To relieve the crowded conditions some are suggesting that the golf courses be opened on Mondays for the memberships. This could have a serious effect on golf course maintenance and playing conditions that private club members have grown used to. Today also, we have the greatest demand in history for excellence in the playing conditions of the golf course. As play increases golf course maintenance is forced to play more emphasis on cultural practices in order to meet the demand. The need for one day a week set aside for golf course maintenance is greater than ever before.

Few of the golfing membership of a club realize the scope of golf course maintenance and how it effects the game of golf. For years Mondays have been Golf Course Maintenance Day and the cultural practice activities have taken place behind the scenes. Many have formed the opinion that golf course maintenance involves no more than mowing grass, raking a sand trap or changing the cup location on the green.

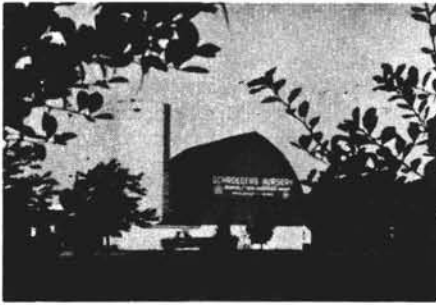
Cultural practices are timely tasks and most often require that an area be taken out of play for a time during the process. Aerification, vertical mowing and topdressing are the cultural practices which must be performed in order to meet the increased demand for excellence in playability. Cultural practices require ideal weather conditions, a beautiful sunny, drying day is the best — the same as a great day for golfing. A cloudy, damp day forces the postponement of cultural practice activities. Cultural practices are not one step operations.

Aerification, the term used for the cultivation of turfgrass areas requires a number of steps. First there is the coring, the removal of soil and turfgrass cores from the soil to the surface. Next, the cores must be allowed a time to dry. This is followed by the dispersion of the cores, the soil portion is broken up and worked into the turf as topdressing and the turfgrass portion is left of the surface. Dispersion is accomplished by multiple mowing, vertical mowing or dragging. Next is the clean up operation which is done by blowing, sweeping and picking up the debris. The final step is irrigation to revive the turfgrass plants from the mechanical abuse incurred during the process. Aerification is generally performed during the spring and/or fall and may be needed on tees, greens, fairways and traffic areas. The amount of play, amount of play under wet conditions and type of soil all effect the amount of compaction and

(continued page 6)



# Schroeder's Nursery, Inc.



TREES • SHRUBS • EVERGREENS

RICHARD A. SCHROEDER  
DON VIRGENS  
CARL DRAVIS

Specializing in Large Caliper Trees  
We offer complete installation

TELEPHONE: 312 — 546-9444

23379 W. Route 60 — Grayslake, Illinois 60030  
Located on Route 60 between Rt. 12 (VOLO) & Rt. 83 (IVANHOE)



**B. Haney & Sons, Inc.**  
**COMPLETE TREE SERVICE**

- TRIMMING • SPRAYING •
- SELECTIVE CUTTING •
- STUMP REMOVAL •
- WOOD CHIPS •

WE "CARE"  
FOR YOUR TREES

**(312) 678-7809**

3344 Lincoln St., Franklin Park, IL 60131

**McGinty**  
**BROS., INC.**

**LAWN CARE**

Weed, Insect, Disease Control;  
Fertilizing, Core-aerifying, Slit Seeding

**HYDROSEEDING**

**TREE CARE**

Tree Spraying, Feeding,  
Surgery, Trimming, Removal

**PRAIRIE SEEDING**

3524 LONG GROVE ROAD  
LONG GROVE, ILLINOIS 60047 (312)438-5161

**PAR EX PROFESSIONAL PRODUCTS®**  
**with IBDU®...with IBDU/SCU®...**  
**with ADDITIVES.**



## PROFESSIONAL PRODUCTS for PROFESSIONAL TURFGRASS MANAGERS.

We formulate our products to satisfy the regional nutritional requirements of *your* turf. Many of these mixes contain our exclusive nitrogen source, IBDU,\* or our exclusive mixture IBDU/SCU. We are now offering the best additives in our mixes: Ronstar,\* Dacthal,\* Balan,\* Dursban,\* Oftanol,\* and others. Check with your local Par Ex Territory Manager or Par Ex Distributor.

**par ex**  
PROFESSIONAL PRODUCTS

**Territory Manager**  
**Thomas E. Skinner**  
Keokuk, IA  
319/524-8912

**Turf Products Ltd.**  
West Chicago, IL  
312/668-5537

RONSTAR® is a registered trademark of RHONE-POULENC, INC.  
DURSBAN® is a registered trademark of DOW CHEMICAL, USA

DACTHAL® is a registered trademark of S.D.S. BIOTECH  
\*OFTANOL is a registered trademark of the Parent Company  
of Farben Fabriken-Bayer, GmbH. Leberkosen

## IRRIGATION PROBLEMS SOLVED

SPECIALIZING IN  
PUMP HOUSE TROUBLESHOOTING

### CONTROL PANELS

REPAIRED, REVAMPED OR REPLACED  
WITH STATE OF THE ART COMPONENTS

### PUMPS

CENTRIFUGAL & TURBINE  
PACKING OR MECHANICAL SEALS

### VALVES

PRESSURE REDUCING, CHECK VALVES  
GATE VALVES & PRESSURE RELIEF VALVES

FOR FURTHER INFORMATION CONTACT:

## LYN-TECH SYSTEMS

(312) 289-7579  
ELECTRICAL, MECHANICAL  
AND  
PUMPING MACHINERY

(Save — Mondays cont'd.)

dictate the frequency of aerification. The scope of the area to be aerified is limited to what can be cleaned up in a 10 to 12 hour working day. If greens, tees and fairways are to be aerified, the process can take up to four Mondays.

Vertical mowing is a cultural practice performed to reduce the amount of thatch, remove grain from greens and to improve the playability of golfing turf. The practice of vertical mowing is coming more and more into the picture. A current trend is to use light-weight mowing equipment on fairways. While this practice is very beneficial in reducing soil compaction caused by mowing equipment and improving the appearance and playability, it can impose a problem — thatch development. Under certain growth conditions the lightweight cutting units are not heavy enough to maintain the desired cutting height and thus can produce a thatchy condition. To correct this, vertical mowing may be necessary. Vertical mowing pulls much debris from the turf and the process is just as time consuming as aerification. At present, vertical mowing of fairways is not a yearly task, but in the near future it is likely to become a yearly chore. Vertical mowing of greens is commonly practiced on two to four week intervals. Greens are often vertically mowed lightly in two directions and this is followed by a conventional mowing as a clean up operation. The time required to vertically mow 20 greens with modern equipment is around six hours.

Many golf courses have gone on a sand topdressing program on greens. Several have expanded the practice to tees. Once the sand topdressing program is started, one is committed to it for life. To stop the program would produce a sand layer in the greens which in a few years would stop air and water movement in the soil. This would produce a condition in which it would be very difficult to grow turf. The sand topdressing program requires a light topdressing every three weeks during the growing season. The time required to topdress 18 to 20 greens can take up to ten hours. There is the applying of the sand, a time for the sand to dry, the brushing of the sand into the turf and final clean up of the area.

(continued page 8)

## POA ANNUA FREE BENT GRASS SOD

Grown In Fumigated Soil

Free from Foreign Strains of Grass and Weeds

- PENNCROSS BENT SOD
- PENNEAGLE BENT SOD
- XL-100 BLEND SOD
- A FULL LINE OF  
LANDSCAPE SUPPLIES
- DECORATIVE STONE
- LANDSCAPE TIMBERS

Illinois' largest sod grower

**HEXOD**  
nursery, inc. 

3900 West 167th Street,  
Markham, IL 60426  
312-596-7200

### TENNIS COURTS

*Construction — Resurfacing*

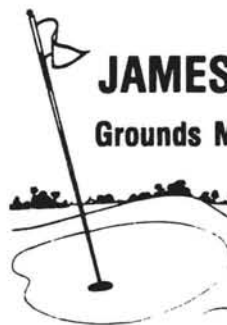
M-C Sport Systems, Inc.  
Addison, IL

John Maniscalco

312/628-0500

## JAMES R. BURDETT

Grounds Maintenance Supplies



Post Office Box 52  
Lombard, Illinois 60148  
(312) 620-5558  
Car Phone 802-5656

**the  
bruce  
company**

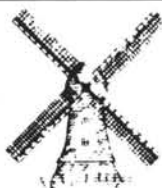
(608) 836-7041

OF WISCONSIN, INC.

**LEE BRUCE**  
GOLF COURSE CONSTRUCTION

2830 W. BELTLINE HWY. • P.O. BOX 330  
MIDDLETON, WI 53562

**OLD**



**DUTCH**

**SAND COMPANY, INC.**

**APPROVED TOP DRESSING SAND  
GOLF COURSE AGGREGATES  
TRAP SAND**

Call for direct quotes on all your  
Aggregate needs

**Richard E. Mika**

(312) 374-2303

(312) 938-7020

**MOW AND FINISH TRIM IN ONE  
TIME-SAVING OPERATION  
WITH GRASSHOPPER**



See it to believe it! Zero turning radius lets you mow—"finish"  
trim around trees, bushes, buildings— in one pass.

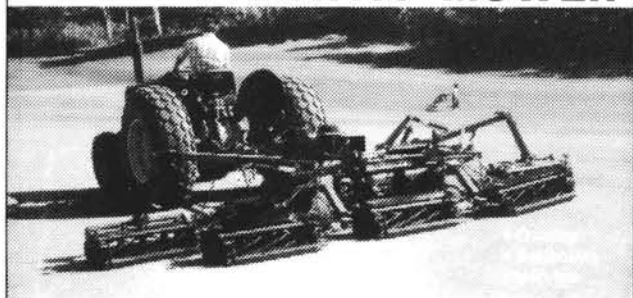
**STOP IN FOR FREE DEMONSTRATION**

**MARTIN IMPLEMENT  
SALES, INC.**

16400 SOUTH 104th AVENUE  
ORLAND PARK, IL 60462 PHONE: 349-8430

**BROUWER**  
TURF EQUIPMENT LIMITED

**5-or 7-GANG  
FAIRWAY MOWER**



- ✓ FLOATING HEAD TO FOLLOW CONTOURS
- ✓ EASY TO TRANSPORT AND BACKLAP
- ✓ SMALL POWER REQUIREMENTS ALLOW LESS COMPACTION, LESS FUEL CONSUMPTION
- ✓ P.T.O. DESIGN ALLOWS SUCCESSFUL MOWING EVEN WHEN WET
- ✓ VARIABLE FREQUENCY OF CUT ENSURES THE HIGHEST QUALITY OF CUT



FOR DEMONSTRATION, CALL  
**CHRISTENSEN  
POWER  
EQUIPMENT**

815 469-5898 MONEE-MANHATTAN ROAD  
FRANKFORT, IL 60423

**Irrigation Engineering Co.**

...SOUND ENGINEERING and QUALITY MATERIALS

Your Exclusive

**Weather  matic.**  
LAWN AND TURF IRRIGATION

**Distributor**



9242 BROADWAY • BROOKFIELD, IL 60513  
(312) 485-6023



2 N 255 County Farm Rd. West Chicago, IL 60185  
Phone: (312) 668-5537

### PEERLESS FENCE CO.

3N381 Powis Rd.  
West Chicago, IL

- Chain-Link Fencing
- Wood Fencing
- Special Gates
- Driving Range Fencing
- Tee Protection Fencing
- Wood & Steel Guard-Rails
- Golf Course Work Our Specialty

312/584-7710

Hal Laman

"Golf Course Work a Specialty"

### LEMONT PAVING CO.

Lemont, IL 60439

Jim, Tracy, Ray Murphy

257-6701

## WHOLESALE SUPPLIER for



LAKE COOK  
FARM  
SUPPLY

### Landscapers • Nurserymen • Golf Courses

- Turf and Agricultural Chemicals
- Common and Elite Turf Grass Seed
- Union Fork Tools
- Peat Moss — Bark — Mulches
- Root Lowell Sprayers
- Shaws and F.S. Fertilizers

#### CUSTOM BLENDING OF BULK FERTILIZERS OUR SPECIALTY

Pickup or Delivered from our Bulk Fertilizer Plant  
Custom Fertilizer Spreading Available

DISTRIBUTORS OF F.S. PETROLEUM PRODUCTS

**GASOLINE • LUBE OIL • DIESEL FUEL**



**LAKE COOK FARM SUPPLY**

**PETROLEUM  
DIVISION**  
101 E. MAIN ST.  
LAKE ZURICH, IL 60047  
540-0100

**TURF  
DIVISION**  
1214W NORTHWEST HWY.  
PALATINE, IL 60067  
991-4800

**BULK FERTILIZER  
PLANT**  
170 CEDAR AVE.  
LAKE VILLA, IL 60046  
356-9600

(Save — Mondays cont'd.)

The performance of cultural practices are not the only task for which a golf course maintenance day is needed. Many fertilizer and pesticide applications require "watering in" after the material has been applied. To omit the "watering in", in the case of fertilizer applications could result in a fertilizer burn to the turfgrass. Certain pesticides, especially those used for grub control lose their effectiveness in a few hours if not watered in immediately. For these reasons it is best to make the applications while the golf course is closed and water can be applied promptly.

A golf course maintenance day is also used to replenish soil moisture lost during an extended dry period. A common practice is to irrigate just enough each night to allow the turf to survive through the next day. By doing this we assure dry playable conditions for the early morning golfers. After about a week of this practice we lose our desired soil moisture level and additional irrigation is needed. The added irrigation does produce wet areas and poor golfing conditions the next morning. By watering more on Sunday nights, and Mondays, time is allowed for the water to soak in before Tuesday mornings play.

Golf course maintenance while there are golfers on the golf course is not the most efficient operation. Out of common courtesy to not interfere with the individuals playing golf, much time is wasted setting idle while the golfer plays his or her ball. Our productivity is limited. When maintenance time is lost to the weather or there is a mid-week tournament to prepare for, Monday is the only day available to catch up on maintenance operations.

On Mondays a golf course maintenance staff strives to perform most all maintenance which could interfere with the game of golf. Whether it be a noisy operation such as removal of a tree near a tee or green, or the preparation of a flower bed near a tee for the convenience of the golfers the jobs are handled on Monday. Cross-cut mowing of fairways are scheduled for Monday because of the added time involved and working around play would even make it longer. Part of our maintenance goal is to provide the most pleasant golfing conditions and sometimes to do this there are jobs to do best when no one is around.

While many clubs do allow club employees, caddies and a few outside guests to play on Mondays, there is not always the most ideal golfing conditions provided. These golfers play on "what you see is what you get" basis! If a green is being top-dressed, they putt through the sand or skip the hole. If a fairway is being aerified and grounds crew members are working on the hole, the hole is skipped. If a sprinkler is operating, they play around it. They are well aware that maintenance comes first. They play under a condition we would not want to subject a dues paying member to.

Few of the golfing membership of a club to realize the scope of golf course maintenance. Many golf course superintendents have answered the telephone on a Monday to the surprise of a club member, who will often state, "What are you doing at the club on your day off?" They felt that because the club was closed, all club employees had the day off. Golf course maintenance is much more complicated than operating a lawn mower. The behind the scenes preventative and corrective maintenance practices that take place on Mondays never enter their minds. Should "Mondays — Golf Course Maintenance Day" be lost, many are in for a big surprise, the behind the scenes work will be brought out into the open.



## PRECISION BLENDED TOP DRESSING

Custom blended to your specifications  
by our modern equipment.

*Buy when you need —  
Eliminate costly storage*

We sell an air-dried, uniform and  
free flowing top dressing.

ASK THE MAN WHO HAS USED IT.

**HUMUS — BLACK SOIL**

## HENRY FRENZER

Area Code 312  
658-5303

620 Webster St.  
Algonquin, IL  
60102

*Turf-Seed, Inc. proudly presents*

**Anthony A. 'Tony' Meyer**

1011 61st Street  
Lisle, Illinois 60532 312/969-1898

*as a Chicago area representative for these  
Oregon-grown certified turfgrass varieties:*

### PERENNIAL RYEGRASSES

Citation II • Birdie II  
Omega II • Manhattan II

### KENTUCKY BLUEGRASSES

Columbia • Midnight  
Challenger • Galaxy Blend

### TALL FESCUES

Olympic • Apache  
Triathalawn Blend

### FINE FESCUES

Shadow • Flyer • Fortress

### HARD FESCUES

Aurora • Waldina

### SHEEP FESCUE

Bighorn

### WILDFLOWER MIX

Bloomers



Produced by:

**Turf-Seed, Inc.**

PO Box 250, Hubbard, OR 97032

503/981-9571

TWX 510-590-0957

The Wetting Agent with Proven Results.  
Over 500 Golf Courses in the U.S.A.  
use NAIAD Central Injection Systems.

## THE LOOK . . .

Greener, More Uniform Turf Color . . Including Banks And Slopes.

## THE SAVING . . .

More Irrigation Water Goes Directly Into The Soil.  
Minimal Run-Off On Banks And Slopes.  
LESS Irrigation Water Used. LESS Labor Is Needed.  
LESS Electrical Pump Energy Required.

## THE EASE . . .

One-Step Application. NAIAD  
Metering Pumps Inject NAIAD  
Directly Into Irrigation  
System, Or Use The  
NAIADrencher  
Tool For Trouble  
Spot Appli-  
cations.

**THE DIFFERENCE**



# Naiad

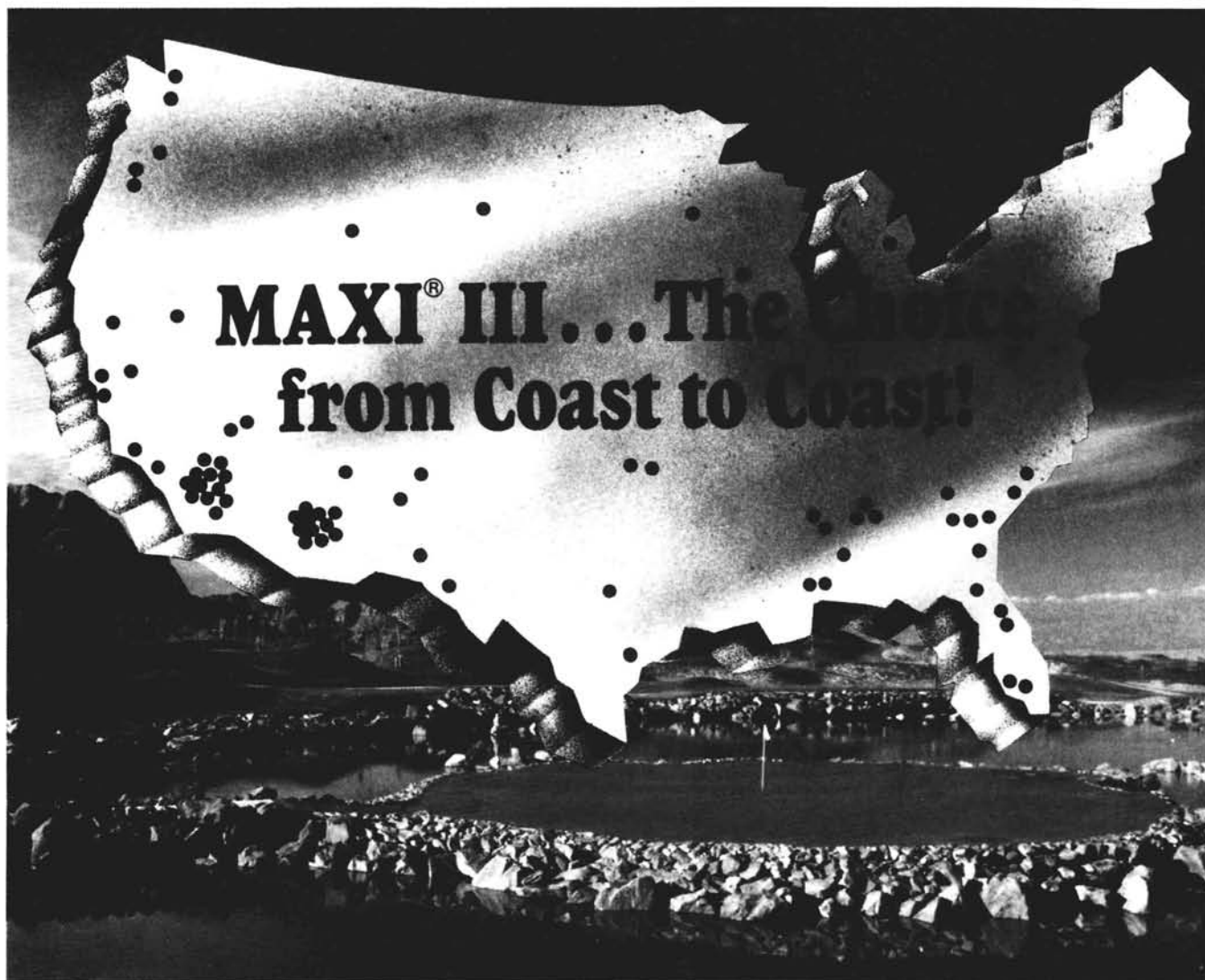
Chicagoand Distributors:

Turf Products, Ltd.  
2 N 255 County Farm Rd.  
West Chicago, IL 60185  
(312) 668-5537 / 231-8441

Bo Jo Turf Supply Co.  
RR No. 1 Box 101  
Peotone, IL 60468  
(312) 258-3485

Home Office: Naiad Co. Pleasanton, CA (415) 462-5855





Stadium Course, PGA West

## Golf's Premier Irrigation Control System

Repeatedly the choice of the world's leading architects and superintendents, MAXI® III from Rain Bird is recognized as golf course irrigation's most exciting and versatile computerized control system.

Sophisticated. Reliable. Powerful. MAXI® III offers state-of-the-art irrigation technology. An IBM computer, too. Not to mention the ability to handle a wide range of important functions. Lighting—security—and a host of other necessary operations.

Legends in the making—the great golf courses of tomorrow are being built today. And MAXI® III is there!

Controllers. Rotors. 50 years of golf course irrigation experience.

**Rain Bird — the choice from coast to coast**



**RAIN BIRD®**

**CENTURY RAIN AID**

**Illinois:**

341 Lively Blvd., Elk Grove Village, IL 60007 . . . . . 312-640-6660

**Indiana:**

51772-2 Cassopolis Street, RTE #19, Elkhart, IN 46514 . 219-262-2270

Indiana, Iowa, Wisconsin TOLL FREE number... **800/323-2352**