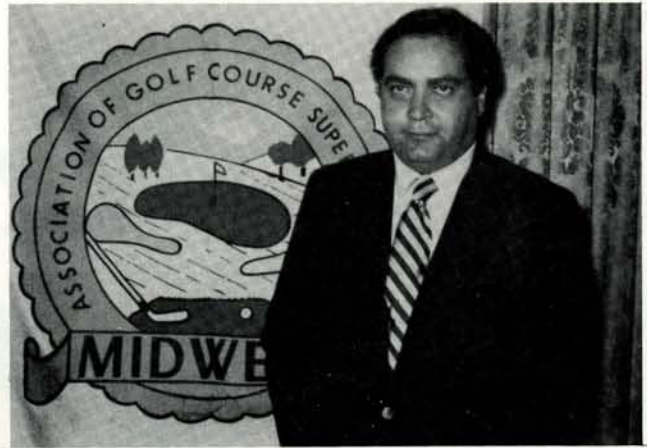


THE BULL SHEET, official publication of the MIDWEST ASSOCIATION OF GOLF COURSE SUPERINTENDENTS.

Editor — Ray Gerber
 865 Hillside Avenue
 Glen Ellyn, Illinois 60137
 Phone — [312] 469-6467

Associate Editor — Robert Breen
 943 Bluestem Street
 Batavia, Illinois 60510
 Office Phone — [312] 653-5800

Bull Sheet printed by Ever-Redi Printing, La Grange, Illinois 60525. Phone: (312) 352-4378.



John Berarducci, Pres.

PRESIDENT'S MESSAGE

I quit trying to predict the weather! It looks like we've all had our fill of rainfall. I don't think I've ever witnessed the downpours we had in July, coupled with heat and such high humidity, glad it's all over.

It was a pleasure hosting the M.A.G.C.S. monthly meeting at Skokie. Not that it was intended but everyone got a taste of tournament rough! One experienced Superintendent who observed some areas of the fairways that were mowed with the triplex greensmower and clippings removed had a few comments on the subject, of which the most memorable being that there is no difference in golf playability between clipping removal with a triplex and mowing with a hyddragang at 5/8 of an inch. There are now a few clubs in Canada picking up their fairway clippings! Uncanny!

We've got a large array of golf prizes to give out at Arlington Country Club on September 13, the date for our annual tournament. In fact you won't even have to practice your game and chances are you will still win a prize. Julius!

MAGCS BOARD OF DIRECTORS FOR 1982

OFFICERS

President — John Berarducci
First Vice President — Peter Leuzinger
Second Vice President — Roger Stewart, CGCS
Secretary-Treasurer — David Meyer

DIRECTORS

Carl Landgrebe, CGCS	John Stephenson
David Behrman	Joe Williamson
Len Berg	Ken Goodman

The following is a list of office telephone numbers for the entire Board.

Dave Behrman	672-5887
Joe Williamson	219/322-1254
John Stephenson, CGCS	584-9225
Ken Goodman	291-2240
Len Berg, CGCS Emeritus	985-8366
Carl Landgrebe, CGCS	986-5332
John Berarducci	835-4296
Roger Stewart, CGCS	447-1049
Peter Leuzinger	584-3403
David Meyer	529-4303

WHY DO SUPERINTENDENTS BELONG TO GCSAA?

They are proud of their profession and want to improve it.

They recognize that a strong organization can better represent the combined interests of the profession through its unified voice.

They are convinced that professional growth can best be achieved through the union of similarly minded colleagues.

They realize that their active participation in the Association can shape the future of their profession.

They have discovered that the Association's activities, programs and publications can keep them abreast of the latest technological information.

They believe that a strong Association can strengthen their regional and local turf organizations and programs.

They understand that their personal participation can assist other superintendents and the turfgrass industry.

They know that the resources of a vast organization can only act to increase their professional stature, knowledge and abilities.

They appreciate the opportunities they will have to attend national and regional educational assemblies, developed to meet their specific needs.

Davis
Your
Chicagoland
Source for
Milorganite

**This year
don't just
fertilize...**

MILORGANIZE

COMPLETE
INVENTORY
ON HAND
AT ALL TIMES

MILORGANITE

**BEST FOR BUILDING
HEALTHIER
TURF!**

- CURBS:**
- DOLLAR SPOT
- BROWN PATCH
- SNOW MOLD
- NEMATODES

NATURALLY RICH IN IRON

**MILWAUKEE
MILORGANITE**

THE NATURAL
ORGANIC
FERTILIZER

LONG LASTING

THE
GOLF COURSE
CHOICE

FOR LAWNS & GARDENS

DOES NOT BURN
EASY TO APPLY

DUST FREE WEED FREE

PREPARED ONLY BY
THE SEWERAGE COMMISSION
MILWAUKEE, WIS.

Specialty Fertilizer Derived From Activated Sludge

Turf disease brown spots can ruin your lawn! That's why turf experts recommend spring, summer, and fall fertilizing with Milorganite. Nation-wide tests (names on request) prove conclusively that Milorganite is the finest fertilizer you can buy.

CALL YOUR DAVIS TURFGRASS SPECIALIST
DAN MOSBLACK, SALES MANAGER/GOLF COURSE DIVISION

Davis

QUALITY TURF PRODUCTS,
SERVING THE PROFESSIONAL
SINCE 1925

GEORGE A. DAVIS, INC.

5440 NORTHWEST HIGHWAY,
CHICAGO, ILLINOIS 60630

(312) 763-6363

OVERSEEDING: AN EFFECTIVE ALTERNATIVE TO REBUILDING C-15 GREENS?

Much has been said and written in regard to "C-15 Decline". Programs to deal with this scourge have ranged from fumigation and total rebuilding to massive doses of antibiotics, the latter being less than successful. I have yet to find an article or report which parallels my experience in successfully overseeding infected greens. Therefore I will present my thoughts regarding this program and perhaps someone with a similar problem may benefit.

C-15 Decline first appeared at Calumet over Memorial Day weekend of 1980. In three days, two greens were 50-75% infected. Within the next two weeks, all but five of the greens developed significant percentages of the disease. As other varieties of bentgrass were healthily growing in the greens as was *Poa Annua*, diagnosis was positive.

At this time, all types of pesticides were tested with no positive results. Aerification, spiking, topdressing, and other cultural practices were as futile. By the time Labor Day 1980 approached, the disease had become progressively worse. After analyzing results of our experimentation and testing, only four practices were felt to have any benefit in relieving disease activity: raising the cutting height to 3/16", reducing soil moisture to a minimum level, using heavier than normal nitrogen application, and applying heavy amounts of Iron Sulfate or Chelated Iron.

Limited finances precluded resodding, rebuilding, or other procedures being used at the time on other courses. Closing the greens for renovation was out of the question due to numerous outings and events booked ahead. When all options were considered, an overseeding program was determined to be the only direction to go.

After Labor Day passed, soil samples were analyzed, deficiencies corrected, a normal spray schedule resumed, and starter fertilizer applied. The greens were then aerified with 1/2" Greensaire tines and cores verticut and dragged in. Before final dragging, 1 lb./1000 sq. ft. of Penncross seed was applied. Two weeks after aerification and seeding the greens were topdressed with 2-1-1 topdressing mix. In spite of our effort, Fall establishment was very poor so the process was repeated early in the Spring of 1981. By May 1 the Penncross had begun to fill in. The disease was continuing to thin the turf at a rate much faster than the Penncross was establishing and the overall putting quality was as poor as ever.

A discussion of our mutual problem with another Superintendent indicated some disease control with an Acti-Dione TGF/Tersan LSR mixture. Another product showing some results was granular PCNB. With an application of TGF/LSR/Iron Sulfate alternated every 5-7 days with one of TGF/Acti-Dione RZ/Iron Sulfate some positive results were achieved. While not curative, these spray applications did seem to slow disease activity.

By mid June 1981 the turf had shown fair recovery although it seemed *Poa* was establishing as quickly as the Penncross. At this time I felt the greens had recovered sufficiently to allow us to begin smoothing and speeding up the putting surface. Research and observation done earlier, I was convinced a sand modification program would be an effective way to: lower mowing height and increase speed, provide an immediate smooth putting surface, provide increased seedling protection from traffic wear, eliminate grain and eventually all thatch, and optimize water usage and increase root oxygen level. While there were numerous

other advantages to the sand program, these were the factors I felt most important to the overseeding program.

Initial sand application was done with a Metermatic spreader in mid June. A second application was made after July 4th for a total sand depth of 3/16". By August 1, cutting height was lowered to 5/32" which was the mowing height we had maintained prior to disease infestation. Alternate fungicide applications were continued but at reduced rates to avoid phytotoxicity. By Labor Day the greens were still very thin. The sand however provided a smooth putting surface, even over the most heavily infected surfaces.

After Labor Day a normal spray schedule was resumed. This was done to encourage any remaining C-15 plants to weaken while protecting desirable plants. The greens were aerified with 5/8" Greensaire tines, cores removed, and hole filled with sand. Before final dragging of the sand seeding was done with Penncross at 1 lb./1000 sq. ft. Starter fertilizer was applied and greens were dragged with a modified coco mat. This placed the seed in the top 1/2" of the aerifier hole. Germination was excellent and the greens filled quickly enough that by the end of the growing season we had lowered the cutting height to 1/8". Holding irrigation to minimum levels after initial establishment put a halt to *Poa* invasion and some of the *Poa* plants weakened and died. By the time we sprayed for snow mold, the C-15 plants were gone and Penncross had established satisfactorily.

This Spring (1982) we found some of our newly seeded areas did not survive the Winter. The last week of March we repeated the aerifying, sanding, and seeding program of the previous Fall. This time we used a 50-50 Penncross-Penneagle mix and also applied 1/2 lb./1000 sq. ft. Nitrogen.

A small hand spiker was used to work additional seed into the winter kill areas. Germination was again excellent and by Memorial Day greens were filled, fast and true. Mowed at 7/64" there is little grain and *Poa* is fast disappearing, a benefit of reduced irrigation needs. It was a personal triumph when I was requested to raise the mowing height on our sloping 14th green. A ball putted uphill and not holed out had a tendency, especially on windy days, to stop momentarily and then roll back towards the frustrated golfer. A ball putted downhill would usually roll off the green if not holed out. We have since raised the height of this green to 5/32" which cured the "problem".

While a number of practices contributed to the success of the overseeding program, I feel sand modification was the single most important practice. Earlier failures with conventional topdressing proved this to me. This is not to say that a sand program is the panacea for C-15 Decline. There are Courses who have been on sand modification programs for several years and now are developing C-15 Decline on their greens. The point I am making is that I believe earlier initiation of the sand program would have expedited establishment by one growing season.

In retrospect, if limited finances were not a problem and the greens would have been closed I believe I would prefer a Roundup-seeding program. Even better would be a Methyl Bromide-seeding program as all *Poa* would be eliminated this way. Also if I had 18 100% C-15 greens all showing infection, the seeding program I used would not be practical. However, if you have: limited funds, need fast, smooth playable greens while establishing new turf, and have partial infestation only, overseeding in conjunction with a sand modification program can work for you. It worked for me.

James F. Mittee, CGCS Supt.
Calumet C.C.

**Banvel[®] +
2,4-D
= Turf**
(minus 29 of the
toughest kinds
of weeds)



All it takes is one application, and your weed control job is done for the season. And so are 29 of the hardest-to-kill varieties of broadleaves.

BANVEL plus 2, 4-D is a versatile combination you use anytime from early spring to late fall. It kills by penetrating both leaves and roots, so weeds can't come back.

Mixes quickly, stores well. Use it according to directions, and your weed worries are over for the year.

Ask your Velsicol distributor about BANVEL 4S, too. Or write Velsicol Chemical Corporation, 341 E. Ohio Street, Chicago, IL 60611.



Before using any pesticide, read the label.

Velsicol

©Velsicol Chemical Corp., 1981

insist on the best!
BENT SOD
FOR GREENS & TEES
from Illinois' largest sod grower



- PENNCROSS
- PENNEAGLE
- XL-100 ELITE BLUE GRASS BLEND
- Full line of Landscape Supplies

HEYOD
&
nursery, inc. 

3900 W. 167th ST., MARKHAM, IL 60426
(312) 596-7200

HEIR APPARENT

A wealthy man, registering at a California hotel, was asked by the clerk if he did not want a certain suite.

"Haven't you something less expensive?" asked the guest.

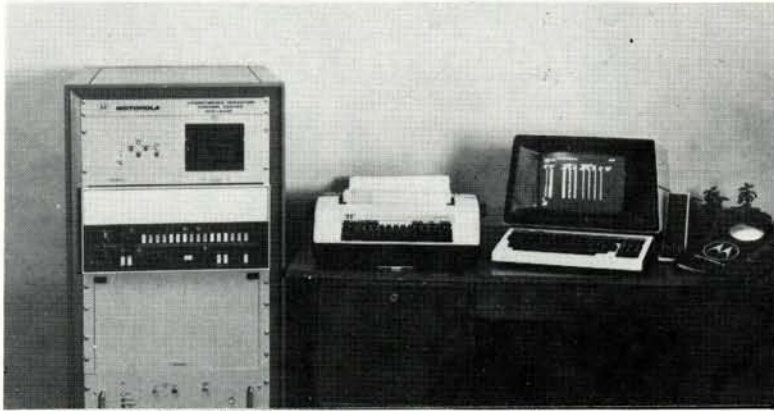
"Why yes, we have, but your son always has that suite when he stops here," said the clerk, who had noted the signature.

"That may well be, but my son has a rich father. I am not so fortunate."

"At age twenty we don't care what the world thinks of us; at age fifty we find out that the world wasn't thinking of us at all."

**PATRONIZE
OUR
ADVERTISERS**

WHEN IT COMES TO ELECTRONIC IRRIGATION CONTROLLERS, LET THE SPECIALIST HANDLE YOUR COURSE!



MIR-2100 CENTRAL STATION, City of Los Angeles Encino Golf Course
(Installed by California Engineering, Sylmar, CA)

CHECK THESE ADVANTAGES: Flexible programming on a daily, weekly, monthly or annual basis • A complete automatic syringe cycle can be activated from the course by turning on a switch in the field unit • Easy manual operation for each station is accomplished by turning on switches located in field units • Irrigation according to the environmental conditions such as: soil moisture, temperature, pressure, etc. • Any kind of cycling irrigation available: different for greens, tees, rough, etc. • Simple design in the field: greens, tees, fairways, etc. can be connected to same field unit. Separation will be made by computer • A complete management tool keeping exact records of the irrigation process including the accumulated time each station has been irrigated. • Automatic printout of the events • Flow rate measurements and activation of the pumps accordingly also available • Automatic injection of liquid fertilizer available • Operation is easy, simple and instructions and warranty are provided directly in the field by Motorola.



MOTOROLA INC. Irrigation Dept.
Since 1928, worldwide leader in electronics
1530 E. SHAW, SUITE 102 / FRESNO, CALIFORNIA 93710 / (209) 221-8401

Motorola has a large family of electronic irrigation controllers with more than 10 years experience in the field. The MIR-2100 Golf Course Irrigation System includes: Computerized central station which has an active two-way communication with the field units.

MOTOROLA

WORLDWIDE LEADER IN
ELECTRONICS SINCE 1928.



MIR-2100 FIELD UNIT
ON CITY OF
LOS ANGELES
ENCINO GOLF
COURSE

Company or golf course _____

REPLY TO: _____ Contact Name _____

MOTOROLA IRRIGATION DEPARTMENT _____ Address _____

1530 E. Shaw, Fresno, CA _____
93710 _____

Phone _____

BROOKSIDE SOIL TESTING and IRRIGATION WATER ANALYSIS

includes complete report, and recommendations for producing quality turf on golf courses.

ADVANTAGES:

- Improve the environment of the grasses and eliminate turf diseases
- Decrease the money spent on pesticides
- Reduce thatch and eliminate fairway renovation
- Less money needed for high cost fertilizer
- Healthy turf attracts more golfers and increases income

Contact:

V. J. Zolman
2618 Harvey Avenue
Berwyn, Illinois 60402

Phone: (312) - 788-4565



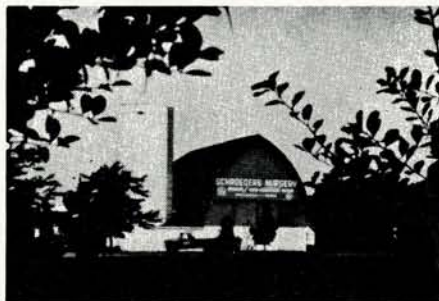
Illinois lawn
equipment inc.
Orland Park, Ill.
(312) 349-8484

Lowest prices of the year on used
and demo equipment

There are
seven new reasons Jacobsen
is the leader in the turf industry

Watch for them this fall
Our 28th Year

Schroeder's Nursery, Inc.



TREES - EVERGREENS - SHRUBS

Specializing in large Caliper shade trees and Ornamentals.
We also offer complete installation service.

TELEPHONE: (312) 546-9444

Arthur E. Schroeder
Richard A. Schroeder
Don Virgens

GRAYSLAKE, ILLINOIS
23379W Route 60

Nursery on Rt. 60 between Rtes. 12 (Volo) and 83 (Ivanhoe)

Nels J. Johnson, Tree Experts, Inc.

SINCE 1930

Nels J. Johnson, Sr. Karl G. Johnson
Nels J. Johnson, Jr. Karl G. Johnson
Complete, economical tree service for Private Estates,
Parks, Municipalities, Golf Courses, Cemeteries,
Schools, Industrial Areas.

All phases of Arboriculture, Diagnosing, Pruning, Treating,
Transplanting, Fertilization, Hydraulic and Mist Spraying.
Removals. Stump Routing. Municipal Forestry. Chemotherapy
for elms, and other trees.

• **FULLY INSURED** •

Graduate -- Licensed Arborists

MAIN OFFICE - 912 Pitner Avenue, Evanston, Illinois 60202
Phones: GRenleaf 5-1877 - GR 5-5255
Hinsdale, Illinois - FA 5-0970

PAARLBERG CHEMICALS

featuring

- Par-Ex Fertilizer
- Vertagreen Fertilizer
- Du Pont Chemicals
- Chipco Chemicals
- Daconil - Dacthal
- Bean Sprayers
- All Major Turf Supplies

Quality • Value • Service

1840 E. 172nd St., So. Holland
312-474-3086 312-258-3485

LABOR-SAVING GRASSES



GLADE KENTUCKY BLUEGRASS

- Does Great in Sun Or 60% Shade
- Excellent Disease Resistance to Powdery Mildew - Stripe Smut - Leafspot - Rust
- Quick Recovery - Fast Germinating

Adelphi

KENTUCKY BLUEGRASS

- Greens Up Earlier in Spring - Stays Green Longer In Fall
- Great Resistance To Disease

CITATION

FINE LEAF PERENNIAL RYEGRASS

- Improved Mowing Qualities
- Blends Well With All Other Grasses

- Low Growing - Tolerates Close Mowing

- Performs Great In Hot, Humid Areas

**FOR MORE DETAILED INFORMATION AND
TEST RESULTS WRITE TO:
VAUGHAN'S**

5300 Katrine Avenue, Downers Grove, Illinois 60515, (312) 969-6300
WAREHOUSES LOCATED IN:
Bound Brook, New Jersey • Landover, Maryland • Ovid and
Grand Ledge, Michigan • Spokane, Washington

The best in turf supplies -
LESCO 100% Sulfur-Coated Fertilizers,
golf course accessories, chemicals including

LESCOSAN

A highly effective pre-emergence
(800) crabgrass and poa annua control (800)
321-5325 362-7413
NATIONWIDE Available from: IN OHIO

LAKESHORE EQUIPMENT & SUPPLY CO.

"Home of LESCO Products"
300 South Abbe, Elyria, OH 44035

McGinty
BROS., INC.

LAWN CARE TREE CARE
Weed, Crabgrass and Disease Tree Spraying, Feeding,
Control/Fertilizing Surgery, Trimming, Removal

HYDROSEEDING

RT. 2, BOX 518, LONG GROVE ROAD
LONG GROVE, ILLINOIS 60047 / (312) 438-5161



A 25-YEAR STROLL IN THE PARKS

In January 1957, the Des Plaines Park District gave 21-year-old John Kiraly his first real job since his arrival in the United States. The work was a godsend for the Hungarian immigrant because he was broke and he couldn't speak English. "We volunteered to go anywhere so long as we could make some money, because we had nothing," he said. But the job turned out to be more than just a way to make a living. Kiraly, now 46, was recently honored by park district officials for completing his 25th year with the district. Since he started, he's risen through the ranks from maintenance man to golf course maintenance and operations supervisor. During the winter, he is in charge of maintaining the district's ice skating rinks, and he also cares for the Lake Park rose flower bed. Kiraly said he came to the United States in December 1956 after deserting from the Hungarian army. He said he left his homeland with a group of fellow soldiers when the unsuccessful revolution against the Communist government broke out. He was living in Chicago when he heard the Des Plaines Park District needed workers. When he first started, he lived in the Rand Park field house before moving into an apartment and then buying his own home in Des Plaines where he married and raised five children. Seven years after he started, he was put in charge of the golf course at Lake Park at Lee Street and Howard Avenue, even though he still didn't speak English very well. He said he knew even less about golf. But Ferdinand Arndt, then park district director, was confident that Kiraly could do the job, and in 1964 named him as the greenskeeper for the 18-hole course that was built the year before. Kiraly said he found the park work similar to the work he did on his father's farm in Hungary. He said he still enjoys the challenge of working to maintain the immaculate condition of the golf course turf. He said he also enjoys starting his working day at 6 a.m. "I like the beautiful, peaceful mornings," he said. Kiraly said he has even learned how to play golf and enjoys the playing game along with his sons.

Richard Chin

OLD



DUTCH

SAND COMPANY, INC.

- TESTED AND APPROVED TOP DRESSING SAND
- SAND FOR BUNKERS
- ALL TYPES OF GOLF COURSE
- AGGREGATES

Call for direct quotes on all your Aggregate needs

Richard E. Mika

(312) 374-2303 - Ext. 44

(219) 938-7020 - Ext. 44

The Very First Systemic in
FLOWABLE Form

**CLEARY'S
3336-F Fungicide**



The dawn of a better technology.
FLOWABLE.

Cleary's 3336 Systemic Fungicide has earned your confidence in the prevention and control of dollar spot and 6 other major diseases. Today W.A. Cleary announces the development of **3336-F**, the first systemic in flowable form. Flowables are simpler and safer for the user to handle. Need little agitation. Will not clog spray nozzles. Offer a uniform particle distribution for excellent availability to the plant. Cleary's new **3336-F FLOWABLE.**

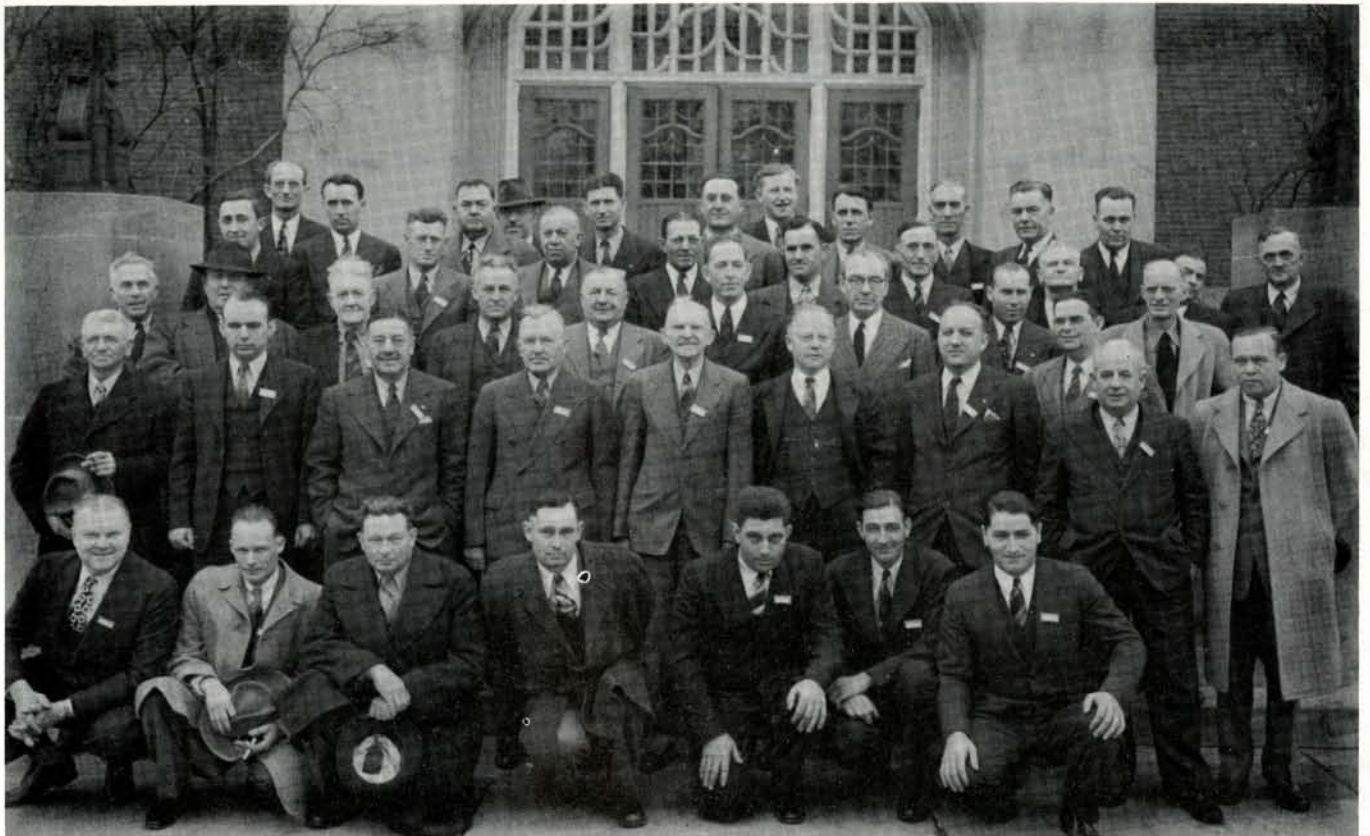
Now available at application cost less than systemic wettable powders.

FOR FURTHER INFORMATION SEE YOUR LOCAL DISTRIBUTOR OR CONTACT:



W.A. CLEARY CHEMICAL
CORPORATION

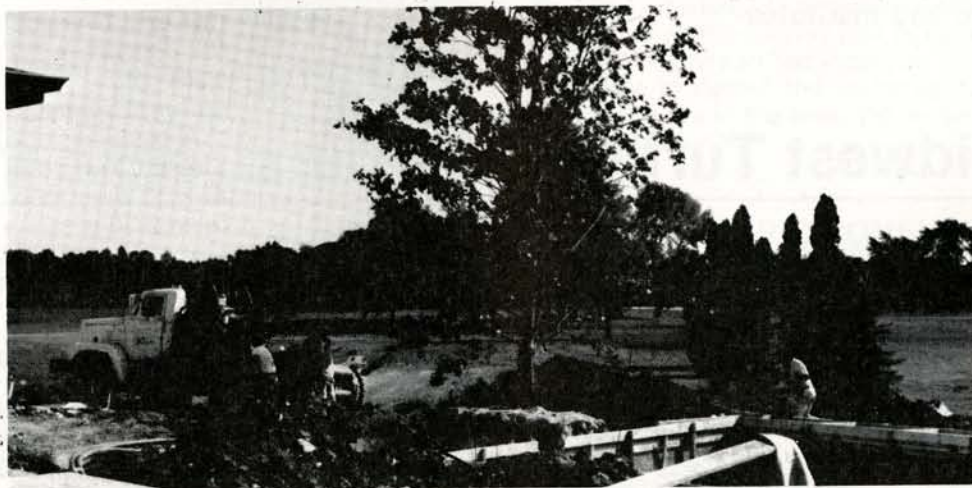
1049 Somerset St., Somerset, N.J. 08873 (201) 247-8000



1944 Midwest Conference at Purdue University
How many can you identify?

We Can Make Your Holes More Playable

By Re-Locating Existing Trees.



Call for prices for moving trees up to 20" dia.

ILT Co., Inc.

312 / 459-3510

21055 North Weiland Road, Prairie View, Illinois 60069

NORTH CENTRAL TURFGRASS EXPOSITION

NOVEMBER 10-12, 1982 / ARLINGTON PARK HILTON, ARLINGTON HEIGHTS, ILLINOIS

An Educational Conference and Trade Show Combining at One Location

THE 23RD ANNUAL ILLINOIS TURFGRASS CONFERENCE, WED., NOVEMBER 10, 1982

THE 30TH ANNUAL MIDWEST CLINIC, THURSDAY, NOVEMBER 11, 1982

THE USGA GREEN SECTION REGIONAL SEMINAR, FRIDAY, NOVEMBER 12, 1982

“The North Central Turfgrass Exposition will give turfgrass managers from Illinois and the surrounding states the chance to meet and share ideas while gaining insight from some of the most renowned turfgrass and ornamental experts in the United States.”

David Wehner
Turfgrass Science
University of Illinois

NORTH CENTRAL TURFGRASS EXPOSITION

NOVEMBER 10-12, 1982

SESSION TOPICS:

- Golf Turf
- Lawn Care
- Grounds Maintenance
- Cemeteries
- Roadside Turf
- Athletic Fields

PARTIAL LIST OF SPEAKERS:

- **Dr. James Beard**, Texas A&M University
- **Mr. George Toma**, Kansas City Chiefs
- **Mr. James Wyllie**, President, GCSAA
- **Dr. Bill Daniel**, Purdue University
- **Dr. Al Turgeon**, Texas A&M University

Sponsored by:

- The Illinois Turfgrass Foundation
- Midwest Association of Golf Course Superintendents
- United States Golf Association
- University of Illinois Cooperative Extension Service
- University of Illinois Office Of Continuing Education & Public Service, Division of Conferences and Institutes

1982 Midwest Turf Clinic Thurs., Nov. 11, 1982

8:00 AM.....Registration (8:00 AM - 5:00 PM)	1:30 PM.....Dr. James Beard
8:30 AM..Trade Show (8:30 AM - 10:00 AM) Cont. Brkfast.	2:00 PM.....Equipment Management - John Ebel
9:30 AM...Opening Remarks & Welcome - Pete Leuzinger	2:20 PM.....Tree Management - Paul Boizelle
9:45 AM.....Keynote Speaker - James Wyllie	2:50 PM.....BREAK
10:20 AM.....Irrigation & Drainage - Bruce Williams	3:00 PM.....Fertilization - Jim Evans
10:40 AM.....Employee Management - Don Pakala	3:20 PM.....Mowing Practices - Julius Albaugh
11:00 AM.....BREAK	3:40 PM.....Aerification - Bruce Sering
11:10 AM.....Disease Control - Randy Wahler	4:00 PM.....Verticutting - Tom Rader
11:30 AM.....Dr. Al Turgeon	4:20 PM.....Topdressing - Dave Ward
12:00 Noon.....LUNCH - TRADE SHOW (12:00 - 2:00 PM)	
Morning Moderator.....Ed Fischer	Afternoon Moderator.....Joe Williamson

Don't miss this educational opportunity. Please note that reasonable hotel accommodations have been arranged. Make your reservation early.
