

Today we are suggesting the establishment of new mowing patterns and heights that reduce the acreage which must be cut frequently. This is in line with the time tested philosophy of the Scots who developed the game from its early beginnings to the game we recognize today. Golf will gradually move back to a more "natural" game; one which takes advantage of native materials and relies less on wall-to-wall turf.

Reducing the acreage that must be mowed frequently results in fewer manpower hours, less new equipment being required, and reduced costs for water, electric power, fertilizer, chemicals, and other maintenance requirements.

On existing courses, indiscriminate changes in mowing patterns without taking into account the aesthetic and strategic factors would be risky at best. The golf course architect, superintendent, and golf professional can present a team recommendation that will take into consideration all of the facets of the game.

By returning roughs to the game we encourage the golfer to sharpen his skills. We suggest an intermediate rough, also, which would be a minor, but effective, penalty of perhaps a half stroke. This intermediate rough might extend from ten feet to fifty feet from the edge of the fairway depending upon the strategy of the hole. It could be allowed to run for 100 to 150 yards in front of the teeing areas, and at the green it could be allowed to surround the traps and the green itself with the exception of a mowed collar area.

Fairways would basically be located in the landing areas of par-4 and par-5 holes with the lengths, widths and outlines being determined to serve golfers of varying abilities. Strategic mowing patterns can be used on straight-away holes as well as on doglegs.

Heights of cut obviously will vary depending upon the types of grass, growing conditions, the amount of play the course receives, and geographic locations. Value judgments will be needed.

Intermediate roughs should be composed of a wide variety of native grasses that are adapted to less maintenance, water, and fertilizer. Perhaps some of these grasses have been forced out over the years. Any changes on existing courses are not something which we should expect to be done suddenly, but would be carried out over a period of years.

Deep roughs of native grasses should be established beyond the intermediate roughs. Neither the intermediate or deep rough needs to be irrigated extensively; only enough to keep the native grasses established.

It becomes evident that programming of the irrigation system must be revised on existing courses to deliver the water patterns required. Irrigation design on new courses will be done in an entirely different manner than the wall-to-wall method.

Those of us who have seen and studied the old Scottish courses from St. Andrews to Muirfield, Troon, and Dornich are excited that golf course architecture appears to be returning to the past. It probably will not complete the cycle, and in fact, I do not think we want to go that far. But I do think the game will become more interesting as we sharpen our skills to the requirements of target golf.

**Jack Snyder, President**  
**American Society of Golf Course Architects**

FOR THE FINEST IN SOD  
**THORNTON'S TURF NURSERY**

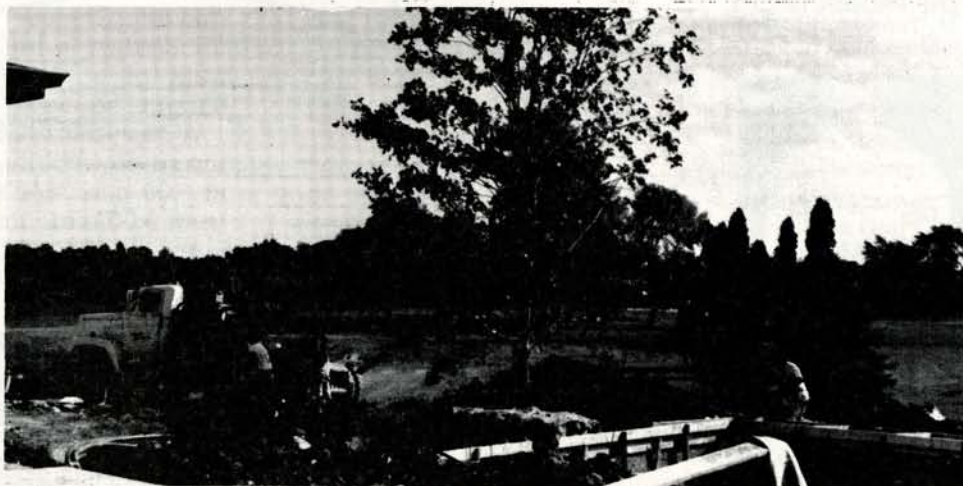
312 - 742-5030

Rt. 2 Box 72

Elgin, Ill.

# We Can Make Your Holes More Playable

## By Re-Locating Existing Trees.



**Call for prices for moving trees up to 20" dia.**

**ILT Co., Inc.**

**312 / 459-3510**

**21055 North Weiland Road, Prairie View, Illinois 60069**



# NEW BANOL.<sup>TM</sup> TAKES THE WORRY OUT OF PYTHIUM.

New systemic action BANOL Turf Fungicide works in a low-cost program of prevention to eliminate the potential turf devastation of Pythium blight. Or BANOL can be used to stop Pythium once it starts. Of course, prevention is best!

BANOL has longer residual, up to 10-21 days, for less frequent applications and additional savings in labor, fuel and equipment. BANOL doesn't wash off like contact fungicides. Your irrigation program can be continued for good turf health and appearance. And BANOL is compatible in a tank mix with many other fungicides and insecticides.

For more information contact:

Distributed by  
Chicago Toro Turf Irrigation Inc.  
TURF PRODUCTS LTD.  
John M. Turner, area sales rep.  
Phone: 312/985-6643 or 800/253-9860



## TUCO

Division of The Upjohn Company  
Kalamazoo, Michigan 49001

## DRIVING RANGE TEE CONSTRUCTION: THE VILLAGE LINKS OF GLEN ELLYN

Size of new tee = 56,500 square feet

Construction equipment used = E200 scraper, 955 track highlift/dozer, sheepsfoot compactor with blade mortargrader. Tee construction was performed by removing top soil and storing on site then grading the subbase properly. The subbase has a 1% slope in 3 directions (see diagram below). The top soil was mixed with an equal amount of No. 2 torpedo sand, spread evenly at a 1/2 foot depth and graded at the 1% slope. The irrigation system was installed and the tee surface and slopes were final graded before sod placement. The sod used consists of a blend of elite bluegrasses.

Some relative costs are listed below: Project began September 22, 1982 and concluded on October 8, 1982.

Construction equipment; all pieces.....	\$6,900.00
Sand; 840 tons @ \$4.85/ton.....	\$4,074.00
Irrigation equipment; 2" pipe, wire, heads, etc.	\$1,300.00
Sod; 7,200 sq. yds. including banks -	
@ 60¢/ sq. yd.....	\$4,320.00
Labor (Golf Course).....	\$800.00
<b>Total.....</b>	<b>\$17,394.00</b>

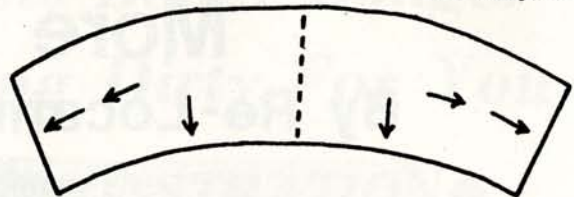
Supplemental additions are planned to complete the project and these include fencing, plantings and berms. All of the above are needed to protect users of the driving range from errant golf shots on both No. 1 tees. The additions will also provide an attractive landscape setting and effective screening.

Projected costs are outlined below:

Top soil purchase & berm construction.....	\$1,800.00
Fencing wood; 400 lineal feet @ \$10./ft.....	\$4,000.00
Plantings; desired trees, shrubs,	
ground cover, etc.....	\$2,500.00
Labor (planting, etc.).....	\$400.00
<b>Total.....</b>	<b>\$8,700.00</b>

Recap: Total spent.....	\$17,394.00
Projected additional costs.....	\$8,700.00
<b>Total.....</b>	<b>\$26,094.00</b>

Tim Kelly, Supt.



## EASY REGISTRATION FOR I.T.F. CONFERENCE

The Illinois Turfgrass Foundation Conference will be held November 10-12 at the Arlington Park Hilton, Arlington Heights, Illinois. This year's conference is being sponsored by the U.S.G.A., I.T.F. and the Midwest Superintendent's Association. For easy registration call Mae Maxwell or Jill Liesen at 217/333-2883.

## TRAVEL PACKAGE PLANS UNDERWAY

GCSAA is finishing negotiations with several airlines to serve all Conference and Show travelers to and from Atlanta. Complete information detailing the plan and how it can save you money will appear in the Conference and Show Brochure which is scheduled to be mailed to all members in October.

Airfares will be reduced a minimum of 30 percent. Also, a convenient toll-free telephone number will be available for use in making, confirming or cancelling reservations. A convention desk with professional personnel assigned to service GCSAA Conference and Show travelers will handle all aspects of conference attendees' travel needs.





## MIDWEST BREEZES

The "Midwest Breezes" are calm in the Nov. issue of the **Bull Sheet**. The Supts. have been very lax with news that the **Bull Sheet** readers would be interested in. This editor hopes that the M.A.G.C.S. board members and all Midwest members will make a better effort to come forth with news for each issue during 1983. This is their publication, not the editor's. I hope that after the annual meeting, Nov. 2, 1982, the elected members will take an interested part in the association's publication.

This past year has not been too bad for turfgrass on golf courses, especially the bluegrass. At this writing the poa annua has made its usual comeback and its rose time again. This has been a good fall for new construction work and the usual improvements made on the golf course. The next project is the draining of the irrigation system. This is one that requires careful planning and supervision. A little mistake could be very costly.

Be sure to attend the Midwest Association annual meeting on Nov. 2. This is a Tuesday. Come and vote for the candidate of your choice. The place - Cyprus Inn.

Don't forget the annual dinner and dance at River Forest C.C. on Nov. 19, 1982. Ed and Jean Stewart will be our hosts. Consult the Sept. issue of the **Bull Sheet**.

Tim Kelly, Supt. Village Links G.C., reports that he has enlarged his practice tee to 56,500 sq. ft. It was planted with a bluegrass blend sod.

Dear Ray;

Once again I reiterate, those lovely leaves are falling again.

### "FALL'S FINAL FLING"

The final curtain is coming down,  
 With beautiful leaves, in abound.  
 It's Natures way, to say Amen,  
 To a Golf Season, once again.  
 As we drain the irrigation system,  
 Putting the Course to bed,  
 Many a thought goes through ones head.  
 Like, what a pleasure, to be a part,  
 Of something so dear, to many a heart.  
 So, in looking forward, to next years Season,  
 We find the prospects, very pleasing.

Superintendently, **Kenneth R. Zanzig**  
**Green Garden C.C.**

**Mike Bavier** Supt. at Inverness C.C. and immediate G.C.S.A.A. Past President has returned from the International Supts. Golf Tournament in England. The Canada Supts. were the winners.

Mike reports he played 7 different golf courses and all in excellent condition, but somewhat different in maintenance than in this country.

## THE "NATURAL" LOOK A RETURN TO THE PAST

Much is being written regarding the new direction in golf course design. And, indeed, it is a breath-taking concept being brought about by necessity, and none too soon in the opinion of many architects.

For years golf course architects have been held to certain requirements such as speeding up play, particularly on daily fee and municipal courses. Golfers have demanded wall-to-wall green grass, and if they could have their "druthers", grass everywhere would be cut at fairway height!

However, these requirements made it necessary to consider all parts of the golf course as prime maintenance areas with the attendant high costs. And these high costs, together with the increasing restrictions on water usage, constitute the "necessity" which is changing the design of new courses, and causing a re-thinking process on defining the strategy of each hole on existing golf courses.

### MIDWEST ASSOCIATION OF GOLF COURSE SUPERINTENDENTS NOMINEES FOR OFFICERS AND DIRECTORS — 1982/83

#### OFFICERS

President ..... Peter Leuzinger  
 St. Charles Country Club  
 1st Vice President ..... Roger Stewart, Jr., CGCS  
 Riverside Golf Club  
 2nd Vice President ..... Ken Goodman  
 Green Acres Country Club  
 ..... Joe P. Williams, CGCS  
 Twin Creeks Country Club  
 Secretary/Treas. .... David Meyer  
 Carson International

#### BOARD OF DIRECTORS

(2 to be elected for a 2 year term - and possibly 1 for a 1 year term)

Julius D. Albaugh  
 Westmoreland Country Club  
 David Behrman  
 Deer Creek Golf Club  
 Jim Evans  
 Turnberry Country Club  
 J. Michael Hart  
 Bon Vivant Country Club  
 Leonard Schnepf  
 Chevy Chase Golf Club

The Nominating Committee presents the above Slate. HOWEVER, nominations will be requested/accepted from the floor.

### G.C.S.A.A. SEMINARS

Coming Soon - G.C.S.A.A. Seminar at Pheasant Run, November 22nd & 23rd. Human Resource Management and Ornamental Pest Management. Price tag is \$75.00. To pre-register watch for future mailings. VISA and Master Charge cards are welcome. Plan on attending.



## PRECISION BLENDED TOP DRESSING

Custom blended to your specifications  
by our modern equipment.

*Buy when you need —  
Eliminate costly storage*

We sell an air dried, uniform and  
free flowing top dressing.

*ASK THE MAN WHO HAS USED IT.*

**HUMUS — BLACK SOIL**

## HENRY FRENZER

Area Code 312  
658-5303

620 Webster St.  
Algonquin, Ill.  
60102

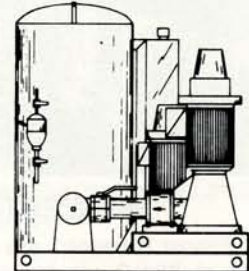
## Royal Coach/Buckner



**PUMP STATIONS**

... NEW OR REMODELED

**Aerial Photos  
of courses  
are available.**



## Builders

**PLUMBING SUPPLY COMPANY  
IRRIGATION DIVISION**

133 South Route 53 Addison, Illinois 60101  
(312) 629-8100

**COMPLETE LINE OF IRRIGATION  
EQUIPMENT AND COMPONENTS**

- Call Collect -

# Scotts most successful product is not available for sale...

# only for advice and support... your ProTurf Tech Rep.



**DAVID FEARIS**  
6525 Cedarbrook Lane  
Peoria, Ill. 61614  
Phone: 309/691-4245

**DICK EVENSON**  
Technical Representative  
443 Woodview Drive  
Sun Prairie, WI 53590  
Phone: 606/837-6563

**GARY DORSCH**  
601 Glen Ellyn Place  
Glen Ellyn, IL 60137  
Phone: 312/790-1584



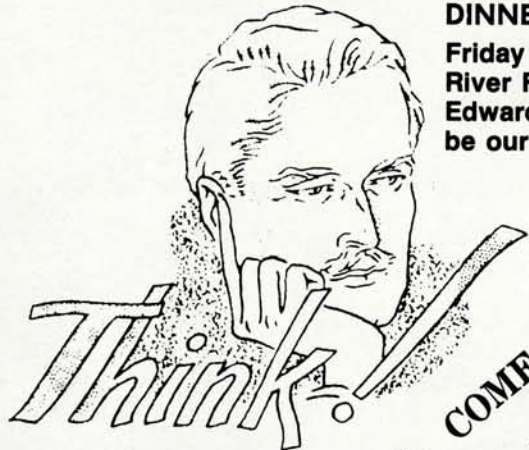
MIDWEST GOLF COURSE SUPERINTENDENTS

DINNER and DANCE

Friday Night, Nov. 18, 1982

River Forest C.C.

Edward and Jean Stewart will  
be our host and hostess.



YOU ALL COME!

AUTUMN







**Wives of National Greenkeepers — 1929 — assembled at Hotel Statler, Buffalo, during the Third Annual Convention of the N. A. G. A. Did they have a good time? How does this compare with the gathering of the ladies at our conference of today? Can you identify anyone in this picture? Could one of the children be you?**



## Huber Ranch Sod Nursery, Inc.

Route 41, Schneider, Indiana 46376

**COMPLETE SUPPLIER OF ALL YOUR GOLF COURSE  
AND LANDSCAPE NEEDS**

- Penncross Sod
- Penneagle Sod
- "Executive" blend bluegrass sod  
ideal for bluegrass tees
- Fertilizers - including PAR-X
- Full line of NK Seed, etc.
- Full line of B & B trees, shrubs &  
evergreens
- Chemicals, sprayers, spreaders, etc.

All products, including trees, are  
palletized and fork-lift delivered.

Indiana 219/552-0552 | Chicago 312/641-2898

## Arthur Clesen Inc.

**CHEMICALS**—aquatic, fungicide, herbicide &  
insecticide

**DECORATIVE MULCHES**—chunk bark &  
shredded mulches, bag or bulk

**FERTILIZERS**—Country Club, Vertagreen, spray  
applied, minor elements & bulk blends

**GRASS SEED**—improved varieties, custom mixes,  
prairie grass & wild flowers

**HAND TOOLS**—loppers, pruners, rakes, saws &  
shovels

**HOSE**—hose, accessories & reels

**HYDRO MULCH/SOIL STABILIZERS**

**ICE MELT**

**OIL ABSORBENTS**

**PAINT**—Easy Marker & Tree Kote

**SOIL CONDITIONERS**—gypsum, lime, peat  
moss, perlite, sulfur & terra green

**SPRAYERS**—Myers, Solo, Universeal & Wheel  
Spray

**SPREADERS**—Cyclone, Diadem & Lely

543 DIENS DR. (312) 537-2177 WHEELING, IL 60090



## JUST TO COOL YOU OFF - DO YOU KNOW???

THAT - Calcium Chloride can melt at 67% below zero? Use Calcium when temperature is below zero.

THAT - Rock Salt (Sodium Chloride) works best at temperatures above zero Fahrenheit?

THAT - Calcium Chloride melts ice 7 times faster than rock salt?

THAT - Lithium Chloride is one of the most powerful ice-melting compounds known (melts ice at 112°F below zero) but costs 50 times more than Calcium Chloride?

THAT - Rock Salt is approximately one half the cost of calcium chloride? So, if the temperature is between 0°F and 32°F, use the less expensive rock salt instead of calcium chloride.

THAT - "ICE MELTING PELLETS" advertising as "non-tracking", "harmless to concrete", etc., and sold under many trade names (at very high prices) is actually calcium chloride anhydrous (regular calcium chloride heated to remove moisture), and reacts slower with ice than regular calcium chloride flakes? Highway departments use the flake.

(Formula of "ice melting pellets")  $\text{CaCl}_2$

(Formula of regular calcium chloride flakes  $\text{CaCl}_2 \cdot 2\text{H}_2\text{O}$ )

So use the flake instead of the pellets at 1/3 the cost and get the same results.

THAT - Rock Salt (sodium chloride) is the salt that dries out, recrystallizes and forms the white residues that can be tracked onto floors and carpets? Calcium chloride does not dry out. It is hygroscopic (attracts moisture) stays "wet" therefore, though it can be tracked in, you can't see it.

THAT - Calcium Chloride is used to keep dust down on unpaved roads, because it absorbs moisture from the air and keeps the dirt "wet" and dust-free. Also causes dirt to "pack down" and harden.

THAT - Salt mixed with sand, coal, ore, etc., makes the piles "Freeze-proof?"

THAT - A mixture of one part calcium chloride and ten parts sand, when applied to ice on sidewalks, driveways, etc., anchors the sand instantly and cannot be easily blown or worn away?

THAT - a 100 lb. bag of salt in the trunk of your automobile puts weight on the rear wheels for extra winter traction and can be available to use in emergencies when you get stuck?

THAT - Calcium chloride solutions (No. 40 calcium chloride in No. 60 - approx. 8 gal. of water) are used to fill inflatable tractor tires to give extra weight and traction and won't freeze? (One gallon of this mixture weighs 11.6 lbs.)

THAT - Calcium chloride solutions are also used in highway "crash barrier" containers to cushion any accidental impact and will not freeze?

THAT - Calcium chloride is used in concrete mixes to give quicker initial set and greater strength? (Below 70°F use 2 lbs. per bag of cement; above 70°F, use 1 lb. per bag of cement) or add to mixing water - 4 lbs. calcium chloride per each gal. water.

THAT - Rock salt and calcium chloride do not themselves attack concrete and asphalt? It is the alternative freezing and thawing of surface water, increased by the use of salt, that does the damage. (To lessen the chance of damage, use salt sparingly and when ice melts, remove slush and water as soon as possible, so that surface dries before the next freeze).

THAT - Calcium chloride absorbs 1 lb. of water for each lb. of its own weight? Good for drying out damp cellars.

Credit - The Collaborator, **NEGSCA**  
Wm. Smart, Editor

## NORTHERN ILLINOIS NURSERYMEN ANNOUNCE WINTER MEET

February 16 is the date for the 1983 Northern Illinois Nurserymen's Winter Seminar. The location will be the Educa-

tional Center, Chicago Botanic Gardens, Glencoe.

This announcement was made by 1983 Chairman, Alfred Berthold, Woodstock, representing the Ornamental Growers Association who with the University of Illinois Extension Service sponsor the event.

The program will be released at a later date.

## ROSEMAN

2620 CRAWFORD AVE. 864-1842  
EVANSTON, ILLINOIS

### TURF EQUIPMENT HEADQUARTERS

ROSEMAN GANG MOWERS	FORD TRACTORS
TILLER RAKES	DEDOES AERIFIER
LELY SPREADERS	LOADERS
SEEDERS	LEAF MULCHERS
ROTO TILLERS	ROTARY MOWERS
HOMELITE CHAIN SAWS	HOMELITE PUMPS

SALES ● SERVICE ● PARTS ● RENTALS

## BOJO TURF SUPPLY CO.

ALL MAJOR TURF SUPPLIES

# BoJo

TURF  
SUPPLY CO.

- PAR-EX
- Vertagreen
- Du Pont
- Diamond Shamrock
- Sand Blasters
- Cyclones
- Fore Par

R R 1, Box 52  
Peotone, Ill.  
312-258-3485

ASPHALT DRIVEWAYS — PARKING LOTS — ETC.

"Golf Course Work a Specialty"

LEMONT PAVING CO.

SAND & STONE

115th & Archer Ave (RI 171) - Lemont, Illinois

RAY MURPHY

257-6701

## NATIONAL CHEMSEARCH CORP.

222 South Central Ave.  
St. Louis, Missouri 63105





# MILAEGER

## Well and Pump Co.

GOLF COURSES  
INDUSTRIES  
MUNICIPALITIES  
SUBDIVISIONS

- Deep Well Drilling and Pump Installation—
- Well Development by Acidizing & Shooting—
- All Makes of Pumps Repaired—
- 24 Hour Service—
- TONKA—Water Treatment Equipment—

## BYRON JACKSON PUMPS

Division of Borg Warner Corporation  
Line Shaft Turbine Pumps and Submersible  
Pumps to 700 HP and 1,200 ft. Settings

Servicing Wisconsin and Illinois  
for Over 60 Years

20950 Enterprise Ave.  
Brookfield, WI 53005  
[414] 784-3960

640 Pearson Street  
Des Plaines, IL 60016  
[312] 296-8707



2 N 255 County Farm Rd. West Chicago, Ill. 60185  
Phone 668-5537

## SUPPORT YOUR ADVERTISERS



# par ex®

PROFESSIONAL PRODUCTS

IBDU® (31-0-0) and PAR EX® fertilizers with IBDU are custom formulated for high maintenance, high quality turfgrass. Check with your local PAR EX territory manager or distributor for other available grades.

Territory Manager  
Cliff Belden  
Eglin, IL 312/697-IBDU

Turf Products Ltd.  
West Chicago, IL 312/668-5537

Paarberg Chemicals Co.  
South Holland, IL 312/474-3086

Olsen Distributing Co.  
Barrington, IL 312/381-9333

Professional Turf Specialists  
Normal, IL 309/454-2467

Rowland's Equipment, Inc.  
Barrington, IL 312/381-1084

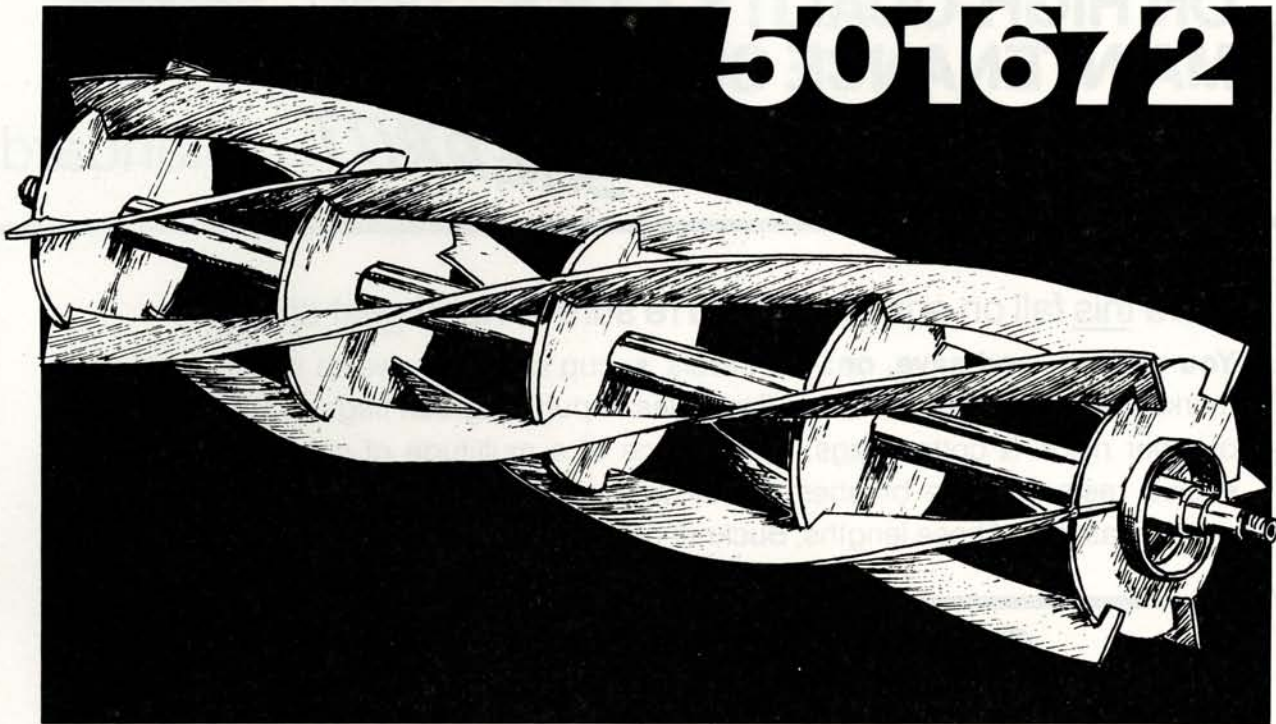
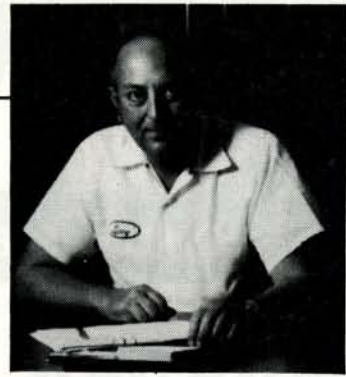


## People Providing Products

Larry Schmidt, Director of Services for Illinois Lawn Equipment, Inc. of Orland Park, IL:

"When trouble shooting your mechanical problems over the phone and in our shop, I assume you are using genuine parts. I find many diagnostic errors are caused by incorrect look-alike "will-fit parts".

*Larry Schmidt*



## ONLY FROM ILLINOIS LAWN EQUIPMENT, INC.

### 501672 IS A JACOBSEN PART NUMBER

It designates a genuine Jacobsen part (6 blade fairway reel).

Thousands of parts went into your Jacobsen machine, each one designed to mesh precisely with its neighbors. So common sense tells you when it comes to replacements – only a genuine Jake part can exactly replace another one.

And this is just as true for regular maintenance items as it is for major system parts. (Remember – the same engineers who designed your Jake's engine, hydraulic, and electrical systems set the specifications for Jake filters, hose, and batteries.)

So whether it's a bolt, filter, or crankshaft – make sure you get the real number – a genuine Jacobsen part. Only from Illinois Lawn Equipment.

**29 YEARS OF QUALITY  
PRODUCTS WITH  
DEPENDABLE SERVICE**



**illinois lawn  
equipment inc.**

**illinois industrial  
equipment co.**

**MAIN OFFICE** Orland Park, Illinois • 16450 South 104th Avenue • 312/349-8484  
**BRANCH OFFICE** Wheeling, Illinois • 291 East Messner • 312/459-7008