

THE BULL SHEET, official publication of the MIDWEST ASSOCIATION OF GOLF COURSE SUPERINTENDENTS.

Editor — Ray Gerber
 865 Hillside Avenue
 Glen Ellyn, Illinois 60137
 Phone — [312] 469-6467

Associate Editor —
Robert Breen
 943 Bluestem Street
 Batavia, Illinois 60510
 Office Phone — [312] 653-5800



John Berarducci, Pres.

Bull Sheet printed by Ever-Redi Printing, La Grange, Illinois 60525. Phone: (312) 352-4378.

MAGCS BOARD OF DIRECTORS FOR 1982

OFFICERS

President — John Berarducci
First Vice President — Peter Leuzinger
Second Vice President — Roger Stewart, CGCS
Secretary-Treasurer — David Meyer

DIRECTORS

| | |
|----------------------|-----------------|
| Carl Landgrebe, CGCS | John Stephenson |
| David Behrman | Joe Williamson |
| Len Berg | Ken Goodman |

The following is a list of office telephone numbers for the entire Board.

| | |
|-------------------------|--------------|
| Dave Behrman | 672-5887 |
| Joe Williamson | 219/322-1254 |
| John Stephenson, CGCS | 584-9225 |
| Ken Goodman | 291-2240 |
| Len Berg, CGCS Emeritus | 985-8366 |
| Carl Landgrebe, CGCS | 986-5332 |
| John Berarducci | 835-4296 |
| Roger Stewart, CGCS | 447-1049 |
| Peter Leuzinger | 584-3403 |
| David Meyer | 529-4303 |

PRESIDENT'S MESSAGE

At the time I'm writing this article we are in the midst of the national convention in New Orleans. It was especially comforting for me, when watching the opening session, to see so many of our Midwest members in the spotlight of attraction. Ben Warren receiving the distinguished service award, Paul Voykin the Leo Feser award, Ray Gerber an editorial award, and our President Mike at the podium giving the opening speech.

Last week I had the opportunity to participate in one of the most successful national golf tournaments ever assembled. The weather was perfect for golf and the tournament and banquet arrangements were excellent.

Previous to the golf tournament I had the pleasure of landing a seven foot sailfish off the coast of Jupiter on the east coast of Florida. I also had the pleasure of playing many of Florida's finest golf courses. It has been nice to miss the coldest weather ever recorded in the Chicago area.

Dear Ray,

I was scanning the local paper when an article on skin cancer caught my eye. I have been visiting a Dermatologist twice a year, for treatment of skin cancer on my cheeks and ears. The disease is common with people in outdoor work exposed to too much sunlight. One remedy is to apply a cream each morning, if you remember!

Perhaps we encourage the dry scaly skin, and the possibility of skin cancer, by coming in contact with the products we use. When it's hot, and we wipe the sweat from our brow. How many of our faces smart and burn from the drift of the pesticides being added to the tank?

Thiram 75 is a sulfur compound. Mycoshield is a tetracycline formulation. Both products were very popular in 1981.

Could these pesticides be absorbed by our exposed flesh at levels that are dangerous? Do they accumulate in our systems? We could be **SAVING THE TURF, and KILLING THE GREENKEEPER!!**

Dudley Smith

The CDGA Green Seminar will be at Butterfield on Thursday, March 25, 9:00 a.m. until 11:45 a.m. followed by luncheon. All area superintendents are invited and are cordially welcome.

Rogers' Pump Sales and Service
 16 S. Washington Batavia, IL 60510
 All Makes - Industrial & Commercial
 And all obsolete Pump Repair
 Mobile crane rental (5 ton)
 (312) 879-7747; 879-7742; 879-7772

PRECISION BLENDED TOP DRESSING

Custom blended to your specifications
 by our modern equipment.

*Buy when you need—
 Eliminate costly storage*

We sell an air dried, uniform and
 free flowing top dressing.

ASK THE MAN WHO HAS USED IT.

HUMUS — BLACK SOIL

HENRY FRENZER

Area Code 312
 658-5303

620 Webster^o St.
 Algonquin, Ill.
 60102



2 N 255 County Farm Rd. West Chicago, Ill. 60185
 Phone 668-5537

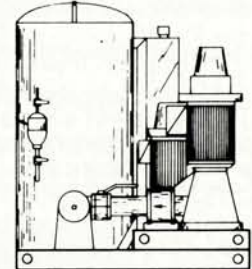
Royal Coach/Buckner^o



PUMP STATIONS

... NEW OR REMODELED

Aerial Photos
 of courses
 are available.



Builders

**PLUMBING SUPPLY COMPANY
 IRRIGATION DIVISION**

133 South Route 53 Addison, Illinois 60101
 (312) 629-8100

COMPLETE LINE OF IRRIGATION
 EQUIPMENT AND COMPONENTS

— Call Collect —

Dear Ray;

With Spring on the horizon, it's sure easy to get high
 on anticipation.

"ANTICIPATION"

Let the sap flow in unrestrained delight.

And the bulbs burst into flowers so bright.

Spring's on the way, we've waited so long.

Birds are ready to join in with song.

Grass is struggling to green in the melting snow.

Golfers are crying, "We're ready, let's go!"

All are ready for that precious day,

When the snow melts and carries Winter away.

Superintendently,

**Kenneth R. Zanzig
 Green Garden C.C.**

FOR SALE

3 - Jacobsen Greensking Spiking Units, used twice -
 \$450

1 - 1969 Jacobsen 76" Turf King, runs & mows good -
 \$300

Want to buy - 2" ABS black fittings

Contact: Larry Horrell, Shamrock Golf Club, 815-937-
 9355.

FOR THE FINEST IN SOD

THORNTON'S TURF NURSERY

312 - 742-5030

Rt. 2 Box 72

Elgin, Ill.

MORE BUDGET TALK

A budget is prepared to be used as a guideline for expenditures by the Green Department for a coming fiscal year. It reflects anticipated needs for the golf course and related areas on the grounds, to continue present standards, to improve areas of maintenance, and to keep up with everyday inflationary trends. Over the years we have seen budgets for golf courses more than double. It is difficult for the average golfer to understand why this has happened, but if we sit back and look at what trends the golf industry has experienced these past ten years, I feel that most understanding people will agree that there is justification for these tremendous escalations. Another important item to remember, the most important consideration about golf course care and budgeting, is that we, as golf course managers, can only predict what Mother Nature has in store for us. Our experience with 1981 C-15 greens is a prime example of how unexpected expenses can throw a well-thought-out budget off the anticipated mark.

Many of our supplies are by-products of the petroleum industry. Gasoline is four to five times more expensive than it was in the early 70's. Supplies in the chemical and fertilizer areas are now three times more expensive than they were in the early 70's. Hauling soil, sand or gravel is triple the price from just a few years ago. When we buy sand or soil and have it shipped in large trucks, the major expense is not the product, it is the shipping. Parts for restoring our own equipment have all gone up tremendously in the past four years. When major repairs come up on some of the larger pieces of equipment, we may have to send it out to be fixed knowing that the minimum for labor will be \$35 per hour. Most times the labor bill for the repair is 3 to 4 times higher than the parts used to fix the machine.

Another change in the golf business is that there is just plain more people playing the game of golf. This means we have to hustle around with more people to get the work done ahead of play. Every year the golf committee wants to know the earliest possible tee time we can give them on weekends or what problems will occur with more players teeing off from the 10th tee. The women have more players every year. On Tuesdays, they have to have a semi-shotgun start for them to finish their play at a reasonable hour or just finish their golf before the men play. All this extra play does increase the labor part of the golf course budget. There is no getting around it. No matter how frugal and efficient we become, we will incur more expenses keeping the golf course with galloping inflation and increased play.

All golf courses have experienced the same inflationary pinch that we have. In seven years we have seen our budget increase almost \$100,000. So have other 18 hole golf courses. In seven years we have averaged increases around 10%, yet many of our supplies have taken yearly increases of 25%. It seems to me that we have been conscientious and mindful of ways to control costs in areas of labor and machinery to offset what could be even higher expenses for the golf course. The demands of the golfer are greater just with their presence. Several years ago a sickle bar could be used to trim the outside part of the golf course. Now we trim it with rotary mowers every 10 days during the golf season. Trimming around trees was done before each of the three major holidays of the summer season. Now it is done on each of these plus each time prior to invitationals and large outings. At one time, we were able to rake the traps three to four times a week in the afternoon between groups of players. Now it has to be

done nearly six times a week ahead of play. And now that we will be experiencing Monday golf outings this coming summer, new ways of doing routine work with no golfers will have to be devised in order not to endanger crew workers or interfere with the golfer. We know, as businessmen, that the decade of the 80's will be one of volatile economics. If this becomes a reality, budgeting the golf course maintenance will become even more difficult. More communication and close work with committees will be necessary to better prepare each year.

We have experienced change every year on the golf course. Things will continue to change if we wish to improve the operation and quality of the golf course. Some rethinking will be necessary at all golf and country clubs. Ideas like assessing part of the golf cart rental for construction of new and old cart paths can be initiated. Guest fees for juniors, women, and non-resident members is another idea being tried by some golf courses in the Chicago area. Reduction of mowing schedules without reducing the quality of the course may have to be tried. Cart paths may have to be built in areas where heavy play leaves traffic areas worn to the soil by season's end.

A golf course budget is a guideline. In most cases, we can come fairly close to determining what the year-end total will be. Our membership expects and should get the most for their dollars spent for the club operation. Approximately 20% of their dollar goes toward the golf course care. The golf course is **the** attraction for the club. We should make every effort to provide a quality golf course for the golfer. If we short-change the golf course, the quality will go down. We will not have what the golfer wants if we run out of fertilizer and chemicals or manpower to provide these conditions. Even though we can not guarantee perfect conditions all the time because of the variables that nature provides, we should at least have the tools to combat the problems that Mother Nature hands us.

**Pete Leuzinger, Golf Course Supt.
St. Charles Country Club**

A N N O U N C I N G

The Second Annual Illinois Lawn Care Applicators Clinic

March 8 & 9, 1982

Pheasant Run Convention Resort
St. Charles, IL (on Route 64)

A two day clinic with experts
from the University of Illinois
and Cooperative Extension Service.

Registration fee: \$45. Please call Mae
Maxwell at 217-333-2883 to register
by phone.

Banvel[®] + 2,4-D = Turf (minus 29 of the toughest kinds of weeds)

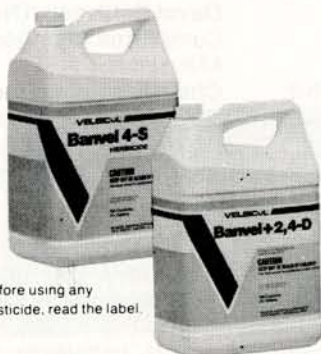


All it takes is one application, and your weed control job is done for the season. And so are 29 of the hardest-to-kill varieties of broadleaves.

BANVEL plus 2, 4-D is a versatile combination you use anytime from early spring to late fall. It kills by penetrating both leaves and roots, so weeds can't come back.

Mixes quickly, stores well. Use it according to directions, and your weed worries are over for the year.

Ask your Velsicol distributor about BANVEL 4S, too. Or write Velsicol Chemical Corporation, 341 E. Ohio Street, Chicago, IL 60611.



Before using any pesticide, read the label.

Velsicol

© Velsicol Chemical Corp., 1981

insist on the best!
BENT SOD
FOR GREENS & TEES
from Illinois' largest sod grower



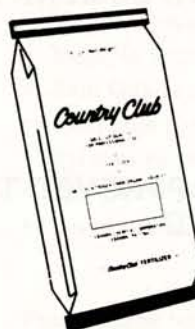
- PENNCROSS
- PENNEAGLE
- TORONTOC-15
- ELITE BLUE-GRASS BLEND XL-100

HE SOD

& nursery, inc. 

3900 W. 167th ST., MARKHAM, IL 60426
(312) 596-7200

COUNTRY CLUB



**TURF
PRODUCTS**

- Homogenous Granulation
- High UF (W.I.N.)
- Balanced Feeding
- Fits Your Budget

Distributed by:

Art Clesen 537-2177

Perma Lawn 864-5045

Lebanon Chemical Corporation
P. O. Box 847, Danville, Illinois 61832

With 27 field-proven formulas we may have more solutions than you have problems.

TURF PRODUCTS LTD.
2 N. 255 County Farm Rd.
W. Chicago, Illinois
Brian Cope, Sales Rep. for the Andersons
Distributor, Tee Time Professional Products



The Andersons Lawn Fertilizer Division
P.O. Box 119 • Maumee, Ohio 43537
Ohio: 800-472-3220 • Outside Ohio: 800-537-3370

OLD DUTCH SAND COMPANY, INC.



- **TESTED AND APPROVED TOP DRESSING SAND**
- **TRAP SAND**
- **ALL TYPES OF GOLF COURSE AGGREGATES**

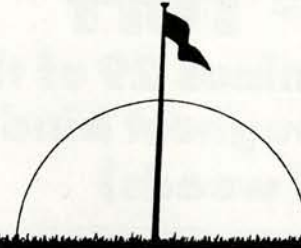
Call for direct quotes on all your Aggregate needs

Richard E. Mika

(312) 374-2303 - Ext. 44
(219) 938-7020 - Ext. 44

The Very First Systemic in FLOWABLE Form

CLEARY'S 3336-F Fungicide



The dawn of a better technology. FLOWABLE.

Cleary's 3336 Systemic Fungicide has earned your confidence in the prevention and control of dollar spot and 6 other major diseases. Today W.A. Cleary announces the development of **3336-F**, the first systemic in flowable form. Flowables are simpler and safer for the user to handle. Need little agitation. Will not clog spray nozzles. Offer a uniform particle distribution for excellent availability to the plant. Cleary's new **3336-F FLOWABLE**.

Now available at application cost less than systemic wettable powders.

FOR FURTHER INFORMATION SEE YOUR LOCAL DISTRIBUTOR OR CONTACT



W.A. CLEARY CHEMICAL CORPORATION

1049 Somerset St., Somerset, N.J. 08873 (201) 247-8000

COMMITTEE APPOINTMENTS - 1982

- EMPLOYMENT:** John Berarducci, Len Berg, Pete Leuzinger
- FINANCE:** Chairman - Pete Leuzinger
& Vice Chairman - Dave Meyer, Roger Stewart, Joe Williamson (Non Board Committee Member)-Tim Kelly
- PUBLICITY:** Chairman - Roger Stewart
Vice Chairman - Joe Williamson, Pete Leuzinger, Dave Meyer
- ARRANGEMENTS:** Chairman - Carl Landgrebe
& Vice Chairman - David Behrman,
- ENTERTAINMENT:** Roger Stewart
- GOLF:** Chairman - John Stephenson,
Vice Chairman - Ken Goodman, David Behrman, (Non Board Committee Members) - Ed Smith, Mike Hart
- MEMBERSHIP:** Chairman - Ken Goodman
Vice Chairman - Carl Landgrebe

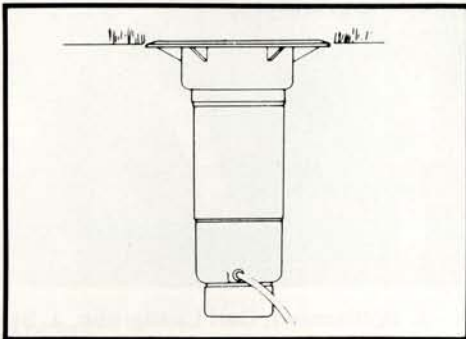
ASGCA OFFERS BROCHURE ON MASTER PLANNING

Master Planning: The Vital First Step in Golf Course Construction --- which includes information on remodeling existing courses as well as planning new facilities --- is available from the American Society of Golf Course Architects, 221 N. LaSalle St., Chicago, IL 60601.

The 12-page brochure contains both pictures and illustrations to demonstrate how master planning can simplify a project and reduce costs.

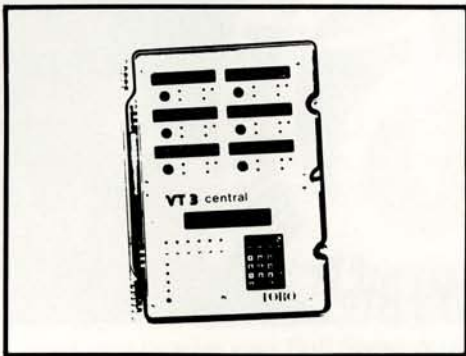
62 of the nation's top 100 golf courses rely on Toro irrigation

Here are two reasons why...



Toro's Exclusive Sprinklers

- Rugged cyclolac case
- Positive spring retraction
- Long life gear drive
- Valve-in-head design
- Pressure regulation
- Manual override
- 2 speed models 60° - 120° and 180°
- 7 year warranty



Toro's VT3 Solid State Control System

- Solid state accuracy
- Multiple programs
- Multiple sprinkler activation
- Rain Gauge control
- Maximum sprinkler flexibility
- Syringe-automatically or manually
- Full cancel capability
- Easy to program

Professional turf deserves the best.



911 Hilltop Drive
Itasca, IL 60143

(312) 773-5555



IRRIGATION DIVISION

Arthur Clesen Inc.

CHEMICALS—aquatic, fungicide, herbicide & insecticide

DECORATIVE MULCHES—chunk bark & shredded mulches, bag or bulk

FERTILIZERS—Country Club, Vertagreen, spray applied, minor elements & bulk blends

GRASS SEED—improved varieties, custom mixes, prairie grass & wild flowers

HAND TOOLS—loppers, pruners, rakes, saws & shovels

HOSE—hose, accessories & reels

HYDRO MULCH/SOIL STABILIZERS

ICE MELT

OIL ABSORBENTS

PAINT—Easy Marker & Tree Kote

SOIL CONDITIONERS—gypsum, lime, peat moss, perlite, sulfur & terra green

SPRAYERS—Myers, Solo, Universeal & Wheel Spray

SPREADERS—Cyclone, Diadem & Lely

543 DIENS DR. (312) 537-2177 WHEELING, IL 60090



Peter Leuzinger, Walter Fuch Sr.



l. to r. - J. Williamson, Carl Landgrebe, J. Stephenson



Ben Warren Received Distinguished Service Award.



Jim McKay, Keynote Speaker



Paul Voykin received Leo Feser Award.



l. to r. - Tim Kelly, Paul Ardissono, Richard Hahn. These three men were the bartenders and waiting for the Midwest Hospitality Room door to be unlocked during the G.C.S.A.A. Conference.



MIDWEST BREEZES

The 1982 G.C.S.A.A. Conference and Equipment Show is now history. Over 8,000 (a record) attended the conference and show in New Orleans during the week of February 1 to February 6. The number of exhibitors and the floor space they occupied was more than any previous conference. The opening day was a rainy one. I am sure it was good for the exhibitors because it kept the attendance indoors. The education part was good but a few improvements could be made. It is impossible to attend all sessions when there are three taking place at the same time.

This editor wants to thank everyone who made it possible for the **Bull Sheet** to win the newsletter award that was presented to me in New Orleans at the conference. However, I feel that the judges should be made up of people who are acquainted with the green-keeping profession. They should have knowledge of insecticides, fungicides, herbicides, fertilizer, soil, and turfgrass. If not, they may overlook newsletter issues that have some good educational items. In 1981 there were some of these, and the newsletter did not receive a mention.

Those of you who receive the **Bull Sheet** and you change your address, please let the editor know. This last February issue four were returned to me with the old address. If you do not receive your **Bull Sheet**, it may be your fault, not the editors or the printers. And it costs extra postage.

Increase your earnings by improving your skills in **TURF MANAGEMENT** and **GROUNDS MAINTENANCE** at the **COLLEGE of LAKE COUNTY**.

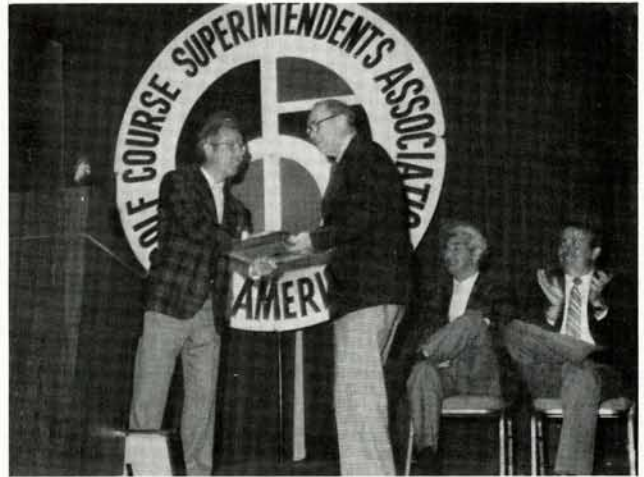
Get a Degree, Certificate or take only a class in **TURF** or **GROUNDS MAINTENANCE**.

1 class costs less than \$50.00.

Spring registration begins Nov. 16, 1981.

For more information call Mark Zampardo at 223-6601
Ext. 320.

On February 18, 1982 Ray and Mrs. Jo Gerber celebrated their fifty-seventh wedding anniversary. It all started on a rainy day in a small town in Long Lake, Minn. There are some rainy days that are beneficial. With no exception the one in Long Lake, Minn. in 1925 could not have been better.



Ray Gerber, Receiving Bull Sheet Award



I. to r. - Jean Nass, Amy Nass, Joyce Krutilla



I. to r. - Ann Reilly, Paul Boizelle, J. Gill, B. Timmerman

Edmund M. Hayden

LANDSCAPING CONTRACTOR

Improve your golf course by relocating old nursery stock or bringing in trees up to 9" in caliper. All trees moved with a 78" Big John Tree Spade.

**SPECIAL PRICES ON LARGE PINES
AND SHADE TREES**

Serving — McHenry, Lake,
Kane, Boone and Winnebago
Counties.

for more information call:

Lou Hartlieb
(815) 338-5357

**IRRIGATION EQUIPMENT AND
EQUIPMENT FOR SALE**

Gould Pump, 750 gpm., 75 hp., 220 3-phase (Rebuilt
1980)

Allis Chalmers Pump, Type 4x3x9 LRX, Model C-16, 30
hp., (New 1975)

1974 Jacobsen Greens King II

Royer Soil Shredder, 3 hp.

Call Ray Schei, Ruth Lake C.C. (312) 986-2081

**SUPPORT YOUR
ADVERTISERS**

Now taking applications for experienced person for
assistant superintendent position at Hinsdale Golf
Club. Send resume to:
Carl Landgrebe, Hinsdale Golf Club, 140 Chicago Ave.,
Clarendon Hills, IL 60514.

**Scotts most
successful product is
not available for sale...**

**only for advice and
support... your ProTurf Tech Rep.**



DAVID FEARIS
6525 Cedarbrook Lane
Peoria, Ill. 61614
Phone: 309/691-4245

DICK EVENSON
Technical Representative
443 Woodview Drive
Sun Prairie, WI 53590
Phone: 606/837-6563

GARY DORSCH
601 Glen Ellyn Place
Glen Ellyn, IL 60137
Phone: 312/790-1584