



### MIDWEST BREEZES

At this May 5th writing the poa annua has not come out of its' hibernation. The winter effects are still with us. A nice warm rain followed by sunshine will take care of the sleeping poa annua. With hope and patience everything will return to normal.

The M.A.G.C.S. April 26th meeting held at Flossmoor C.C. was a most enjoyable one. Although the temperature was not the best for golfing, fifty-one played on a super conditioned course made possible by Supt. Ray Schmitz. Flossmoor C.C. is certainly lucky to have a golf course Supt. with the knowledge that Ray has. We all thank the members of Flossmoor C.C for sharing their club with us for this April 26th meeting.

The educational speaker was Warren Bidwell, Supt. at Olympia Fields C.C., who did an excellent job in keeping the attendance in their chairs. Warren showed many pictures that he took on his trip to South Africa and also explained how the natives' living compares to ours. The beautiful pictures were the result of excellent photography - real professional work. All in all, it was a great meeting.

#### Speed of Carts on Golf Courses and Club Grounds

Why the excess speed with golf carts or vehicles used for maintenance work by the grounds employees?

For the past several years this editor has observed the unnecessary speed that these carts are driven and it appears that this habit is getting worse rather than better. Why wait for a serious accident to happen before action takes place to stop this unnecessary speed. Have it halted **now** before it is too late.

Slower speed will certainly do less damage to the turfgrass and will take very little more time to play a round of golf. The employee will get his work done in about the same time. This editor speaks from experience gained long before the carts were around. This goes back sixty-four years. Action now will save considerable repair costs and mechanic hours, and may prevent bodily injury to someone.

### \*\* JOHNNY THE BEAR'' BARARDUCCI WINS ANNUAL GIN TOURNAMENT

Twenty players participated in the First Annual Gin Tournament at Hackney's Restaurant in Wheeling. The boisterous event was a huge success, and almost \$1,000 was raised for Multiple Sclerosis. My sincere thanks to all those who played, and to many friends who sent their Multiple Sclerosis checks but, unfortunately, couldn't make the gala event.

The competition was keen and swift, and our ebullient

Midwest President, John Paul Berarducci played brilliantly to defeat his tough opponents in the round robin to win the beautiful first place trophy.

It was especially gratifying for our Hackney's gang in Wheeling to have the erudite "Bear" defeat, in the finals, the best of the roguish challengers from Hackney's on Lake. Others who played superbly but lost by a few slim points were Mike Bavier, Jim Burdett, Ed Fisher, Tom Rodem, Dudley Smith (the longest game), Peter Voykin, and "Geeg" Masterson, our robust host. "Geeg" played skillfully all the way to the semi-finals with some of the most extraordinary moves ever witnessed by old time gin players. It was only after he finally was eliminated that "Geeg" admitted he thought he was playing "Old Maid".

**Paul Voykin, Chairman of the Event and Fast Loser in the First Round**

### BROOKSIDE SOIL TESTING and IRRIGATION WATER ANALYSIS

includes complete report, and recommendations for producing quality turf on golf courses.

#### ADVANTAGES:

- Improve the environment of the grasses and eliminate turf diseases
- Decrease the money spent on pesticides
- Reduce thatch and eliminate fairway renovation
- Less money needed for high cost fertilizer
- Healthy turf attracts more golfers and increases income

Contact:

**V. J. Zolman**  
**2618 Harvey Avenue**  
**Berwyn, Illinois 60402**

Phone: (312) - 788-4565

### Rogers' Pump Sales and Service 16 S. Washington Batavia, IL 60510

All Makes — Industrial & Commercial  
And all obsolete Pump Repair  
Mobile crane rental (5 ton)

(312) 879-7747; 879-7742; 879-7772

## PRECISION BLENDED TOP DRESSING

Custom blended to your specifications  
by our modern equipment.

*Buy when you need —  
Eliminate costly storage*

We sell an air dried, uniform and  
free flowing top dressing.

ASK THE MAN WHO HAS USED IT.

HUMUS — BLACK SOIL

### HENRY FRENZER

Area Code 312  
658-5303

620 Webster St.  
Algonquin, Ill.  
60102

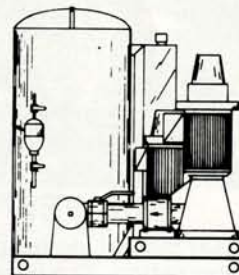
## Royal Coach/Buckner®



PUMP STATIONS

... NEW OR REMODELED

Aerial Photos  
of courses  
are available.



### Builders

PLUMBING SUPPLY COMPANY  
IRRIGATION DIVISION

133 South Route 53 Addison, Illinois 60101  
(312) 629-8100

COMPLETE LINE OF IRRIGATION  
EQUIPMENT AND COMPONENTS

— Call Collect —

# Scotts most successful product is not available for sale...

# only for advice and support... your ProTurf Tech Rep.



DAVID FEARIS  
6525 Cedarbrook Lane  
Peoria, Ill. 61614  
Phone: 309/691-4245

DICK EVENSON  
Technical Representative  
443 Woodview Drive  
Sun Prairie, WI 53590  
Phone: 606/837-6563

GARY DORSCH  
601 Glen Ellyn Place  
Glen Ellyn, IL 60137  
Phone: 312/790-1584

# GOLF COURSE SUPERINTENDENTS and MANAGERS

*Look what you can buy at all 42  
Bearing Headquarters locations.*

- BEARINGS • POWER TRANSMISSION  
EQUIPMENT • BEARING ACCESSORIES
- BEARING MATERIALS • CONVEYOR  
EQUIPMENT COMPONENTS • INDUSTRIAL  
HOSE • MACHINE SHOP SERVICES
- INDUSTRIAL PACKING MATERIALS

No need to go to the machine manufacturers and pay premium costs. Products can be bought from local inventories at competitive prices. Our service sales specialist can identify replacement parts on all your equipment. For a complete list of products, call or write your local Bearing Headquarters location.



*the pace setters in bearing distribution*

**BEARING HEADQUARTERS CO.**

**A HEADCO COMPANY**



ALSIP  
312-388-4700  
ALTON  
618-462-0063  
BROADVIEW  
312-681-4400

CHICAGO  
312-939-5995  
DECATUR  
217-422-9566  
ELK GROVE VILLAGE  
312-595-5450

JOLIET  
815-729-4016  
MORTON GROVE  
312-966-7575  
MT. VERNON  
618-242-7494

PERU  
815-223-7625  
ROCKFORD  
815-398-1125  
ST. CHARLES  
312-584-5701

SOUTH HOLLAND  
312-596-4850  
WAUKEGAN  
312-623-5212

## Arthur Clesen Inc.

**CHEMICALS**—aquatic, fungicide, herbicide & insecticide

**DECORATIVE MULCHES**—chunk bark & shredded mulches, bag or bulk

**FERTILIZERS**—Country Club, Vertagreen, spray applied, minor elements & bulk blends

**GRASS SEED**—improved varieties, custom mixes, prairie grass & wild flowers

**HAND TOOLS**—loppers, pruners, rakes, saws & shovels

**HOSE**—hose, accessories & reels

**HYDRO MULCH/SOIL STABILIZERS**

**ICE MELT**

**OIL ABSORBENTS**

**PAINT**—Easy Marker & Tree Kote

**SOIL CONDITIONERS**—gypsum, lime, peat moss, perlite, sulfur & terra green

**SPRAYERS**—Myers, Solo, Universeal & Wheel Spray

**SPREADERS**—Cyclone, Diadem & Lely

543 DIENS DR. (312) 537-2177 WHEELING, IL 60090



### Huber Ranch Sod Nursery, Inc.

Route 41, Schneider, Indiana 46376

COMPLETE SUPPLIER OF ALL YOUR GOLF COURSE  
AND LANDSCAPE NEEDS

- Penncross Sod
- Penneagle Sod
- "Executive" blend bluegrass sod ideal for bluegrass tees
- Fertilizers - including PAR-X
- Full line of NK Seed, etc.
- Full line of B & B trees, shrubs & evergreens
- Chemicals, sprayers, spreaders, etc.

All products, including trees, are palletized and fork-lift delivered.

Indiana 219/552-0552 Chicago 312/641-2898

# NEW BANOL™ TAKES THE WORRY OUT OF PYTHIUM.

New systemic action BANOL Turf Fungicide works in a low-cost program of prevention to eliminate the potential turf devastation of Pythium blight. Or BANOL can be used to stop Pythium once it starts.

Of course, prevention is best!

BANOL has longer residual, up to 10-21 days, for less frequent applications and additional savings in labor, fuel and equipment. BANOL doesn't wash off like contact fungicides. Your irrigation program can be continued for good turf health and appearance. And BANOL is compatible in a tank mix with many other fungicides and insecticides.

For more information contact:

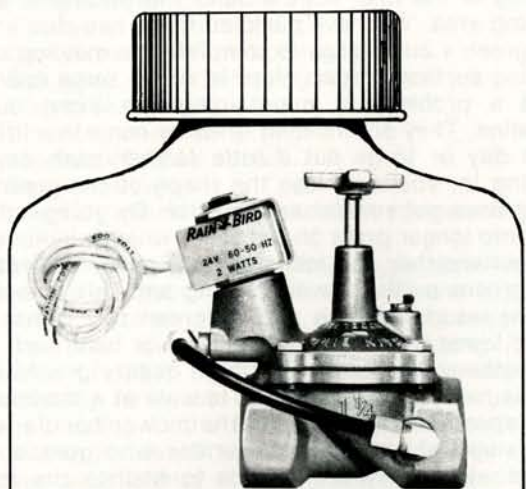
Distributed by  
Chicago Toro Turf Irrigation Inc.  
TURF PRODUCTS LTD.  
John M. Turner, area sales rep.  
Phone: 312/985-6643 or 800/253-9860



## TUCO

Division of The Upjohn Company  
Kalamazoo, Michigan 49001

# Automatic Valve Failures?



**R<sub>v</sub>**

Remedy for severe water conditions.

**CENTURY/RAIN-BIRD®  
CP\* VALVES**

\*CONTAMINATION PROOF

If you've experienced  
sprinkler system  
auto valve failure  
send for your free  
2-page correction guide!

Call us for the cures -  
we do it right  
the first time!

Master distributor **RAIN-BIRD®**

**CenturyRainaid**

- 341 Lively Blvd.  
Elk Grove Village, IL 60007  
312/640-6660
- 31691 Dequindre  
Madison Hts., MI 48071  
313/588-2990

## GOLF COURSE IRRIGATION SALES CO.

Div. of Halloran & Yauch, Inc.  
2040 Lehigh Ave., Glenview, Ill. 60025

Distributors of:

- "AQUA DIAL" — Sprinklers & Valves
- "NELSON" — Sprinklers, Valves & Controllers
- "P.V.C." — Plastic Pipe & Fittings

**CUSTOM PUMP HOUSE CONSTRUCTION  
AND REMODELING!**

**IRRIGATION INSTALLATION & REMODELING!**

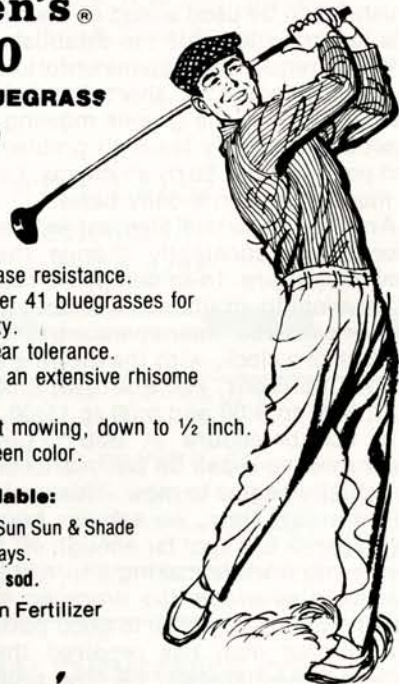
**GOLF COURSE DRAINAGE SYSTEMS!**

Call Us For Your Golf  
Course Irrigation Needs!

**312-729-1625**

The tough bluegrass for collars and  
tees.

**Warren's®  
A-20  
KENTUCKY BLUEGRASS  
SOD**



- Excellent for disease resistance.
- Rated superior over 41 bluegrasses for quality and density.
- Rated high for wear tolerance.
- Deep rooting with an extensive rhizome system.
- Thrives with short mowing, down to 1/2 inch.
- Beautiful dark green color.

**Also available:**

- Warren's A-34 BenSun Sun & Shade Seed Mixture for fairways.
- Bentgrass sod.
- USS Vertagreen Fertilizer

**Warren's**  
TURF NURSERY, INC.

Phone: 312/974-3000

8400 West 111th. Street  
Palos Hills, Illinois 60465

## GREENS MOWING NOT AS EASY AS IT LOOKS

by Bob Williams, Highland Park, Illinois

To most golfers, the mowing of greens is just an insignificant necessity that happens periodically in the routine of course maintenance.

To the seasoned superintendent, greens mowing becomes somewhat routine too until some facet of the operation begins to break down. Then we get into all sorts of problems.

Actually, greens mowing is an art which is coupled with a number of scientific factors. To begin with, good, true, putting surfaces are one of the primary assets and objectives for any golf course. Considerable scientific know-how must go into the development of the turfgrass on these surfaces. Selection of adapted grass strains, soil mixtures, drainage, irrigation, disease control, plus many others are samples of items that have to be in balance before we get around to the mowing and grooming. The mowing of the putting green is the final touch in providing a velvet smooth surface that hopefully allows the golfer to see his ball run true to its target at the bottom of the cup.

In the northern climate, greens mowing should start as soon as the frost is out of the ground and the surface is dry. In Chicago, this is normally around the last of March or the first of April. This first cutting takes off the accumulation of Winter growth. By about the third week in April there is enough growth to require a daily mowing schedule. Here is where one of the keys to good greens lies. Greens must be mowed at least six days a week and preferably seven throughout the growing season.

In greens mowing, we are harvesting a crop of grass of approximately a one-half bushel per day, per green. If we skip a day of mowing, we begin to accumulate excess leaf blades that can eventually develop into graininess and matting of the leaf blades. Combs or brushes can be used ahead of the mower to help offset this tendency towards the establishment of grain.

What frequently happens unfortunately, is that when a superintendent is short handed for labor, he is inclined to skip the greens mowing occasionally. This practice eventually leads to problems of thatch, grain and poor putting. So by all means, I consider it a MUST to mow greens on a daily basis.

Another important element in greens mowing is the necessity to constantly change the direction of the mowing pattern. In so doing, we reduce the possibility of developing graininess. In practice, most superintendents instruct their operators to think of the green as the face of a clock, with the mowing direction shifted to various positions. For example, 6:00 to 12:00, 7:00 to 2:00, 3:00 to 9:00 and 5:00 to 11:00.

In our procedure at Bob O'Link, we teach our greensmen to repair all ball marks on the green before he actually begins to mow. This avoids scalping off any raised areas. Next, we ask our greensmen to remove the flagstick to a spot far enough off the green so as not to run into it while making a turn with the mower. This practice also avoids the dropping of the pole on the green resulting damage to good puttability.

After our man has repaired the ball marks and removed the flagstick, he now proceeds to make his initial cut across the green in the direction appropriate for that particular day. This first cut is also taken somewhere near the center of the green, relative to the direction for that day. This helps him to keep his lines straighter.

In the mechanics of the actual mowing, several points are important to stress. First, we teach our men to make a circular turn at the end of each strip rather than a quick twist of the mower. Twisting or turning the mower on-a-dime so to speak, ends up with damage to the turf on the collar and eventually bare ground as the summer heat and stress arrives.

Another most important aspect of mowing is the cutting of the final edge around the perimeter of the putting area. We have our men make two cuts around the green's outer edge to complete the mowing of the putting surface proper. Here is where some operators have a problem in maintaining the exact outside edgeline. They are inclined to either come in a little bit each day or to go out a little farther each day. By coming in, you soon lose the shape of the green and the greens get smaller and smaller. By going out, you bite into longer grass on the collar which will kill out in the hot weather and look very unsightly. We reshape our greens outlines every Spring and this sometimes means resodding with putting green turf rather than try to lower the height of the collar or bank turf.

Another consideration for high quality greens mowing, is to teach the operators to walk at a moderate to slow speed and to hold onto the mower handle with a palms-up light grip. The operator who goes at high speed with heavy arms tends to bounce the mower with the result of a very undesirable "wash-board" effect on the putting surface. This slowing down is difficult where early morning play is heavy, particularly for the public courses.

In our mowing process, we have to establish a procedure for the disposal of the clippings. At Bob O'Link, we spread the clippings in the rough a short distance from the green, trying to change the spot from day to day. Some supers are providing bags or other containers for the grass, which is then picked up as a separate operation. Still others provide each mower with a small vehicle and he collects his clippings as he mows from green to green. The nutrient value derived from the decay and breakdown of the clippings is most beneficial if the operator can learn to properly spread them out so as not to interfere with the lie of a golf ball.

Height of cut for putting greens? This is a subject that can bring about some pretty lively discussions between superintendents. Part of this is true because of the variations in the different makes and types of mowers. They do not all cut alike even though the bed knife setting may be the same. Also, different strains of grass under different management practices will respond differently. Height of cut might also be dictated to a great extent by traffic, budget, labor, climate as a few examples. Consequently, there are so many variables in determining a proper height for mowing that it is hard to find two courses with exactly the same putting surfaces for speed, resilience and general puttability.

Our height of cut remains the same throughout the season. We use a single unit power mower set at 13/64ths of an inch (half way between 3/16ths & 7/32nds). Our membership prefers the greens to be moderately fast without being slippery. This height gives us this response. Combs are left on our mowers during the entire season, set 3/32nds below the cutting height.

We mow our greens by the sectional system with four men each mowing 5 greens (includes practice and nursery). Each greensman also rakes the footprints from the green traps on days when we are not power raking. Our normal time for mowing and trap care

combined runs about 3 hours per man for a total of 12 labor hours, per day.

The current trend towards multiple triplex mowing units for greens opens up a whole new approach. Some courses are using them exclusively, others are using them in part, and still others are watching attentively to see how successful they prove out. At any rate, regardless of the type of machine used, most all of the principles we noted earlier, must still be observed, such as:

- Change of direction of cut.
- Care to maintain the outer edge.
- Ball mark repair before mowing.
- Flag stick removal.
- Brushing or combing.
- Moderate to slow speed.
- Daily mowing.
- Careful attention to gasoline, grease, oil, no spills.

While we are still using the single units for our greens, we are gaining experience with the triplex on our tees and collars. Thus far we are very happy with the results of the triplex as we are using it. The reduction of labor costs with the triplex units will undoubtedly force the use of the multiple units for greens mowing in the future. At the same time the manufacturers seem to be steadily improving the mechanical efficiency of their machines. Personally, I doubt if you will find single unit mowers on greens within five years, and I don't think we will lose any quality in the process. If anything, we will not only save manhours, we will be doing a better job with a better tool for management.

**Editor's Note:** This is a repeat article. It received considerable interest and this being the start of a new mowing season, I thought it appropriate to use at this time. Also there has been many young golf course Supts. added to the profession in recent years. This article should be of valuable information to them and their employer.

### Tennis Courts....

**628-0500**



**M-C SPORT SYSTEMS, INC.**

745 WINTHROP, ADDISON, ILLINOIS 60101

DESIGNING -  
NEW CONSTRUCTION - RE-SURFACING  
.... *Indoor - Outdoor* ...  
SYNTHETIC ATHLETIC SURFACES

**TENNIS COURTS  
RUNNING TRACKS**  
ALL WEATHER & FAST DRY TENNIS COURTS



**SUPPORT YOUR  
ADVERTISERS**

### TERRY MAIER TRUCKING

Specializes in "Trap Sand".  
It is also great for use in blending with top dressing.  
Phone 312/552-8753  
Plano, Ill.

## ROSEMAN

2620 CRAWFORD AVE. 864-1842  
EVANSTON, ILLINOIS

### TURF EQUIPMENT HEADQUARTERS

ROSEMAN GANG MOWERS	FORD TRACTORS
TILLER RAKES	DEDOES AERIFIER
LELY SPREADERS	LOADERS
SEEDERS	LEAF MULCHERS
ROTO TILLERS	ROTARY MOWERS
HOMELITE CHAIN SAWS	HOMELITE PUMPS

SALES ● SERVICE ● PARTS ● RENTALS

### BOJO TURF SUPPLY CO.

ALL MAJOR TURF SUPPLIES

# BoJo

TURF  
SUPPLY CO.

- PAR-EX
- Vertagreen
- Du Pont
- Diamond Shamrock
- Sand Blasters
- Cyclones
- Fore Par

R R 1, Box 52  
Peotone, Ill.  
312-258-3485

ASPHALT DRIVEWAYS — PARKING LOTS — ETC  
"Golf Course Work a Specialty"

### LEMONT PAVING CO.

SAND & STONE  
115th & Archer Ave (Rt 171) - Lemont, Illinois  
RAY MURPHY 257-6701

### NATIONAL CHEMSEARCH CORP.

222 South Central Ave.  
St. Louts, Missouri 63105



# MILAEGER

## Well and Pump Co.

GOLF COURSES  
INDUSTRIES  
MUNICIPALITIES  
SUBDIVISIONS

- Deep Well Drilling and Pump Installation—
- Well Development by Acidizing & Shooting—
- All Makes of Pumps Repaired—
- 24 Hour Service—
- TONKA—Water Treatment Equipment—

## BYRON JACKSON PUMPS

Division of Borg Warner Corporation  
Line Shaft Turbine Pumps and Submersible  
Pumps to 700 HP and 1,200 ft. Settings

Servicing Wisconsin and Illinois  
for Over 60 Years

20950 Enterprise Ave.  
Brookfield, WI 53005  
[414] 784-3960

640 Pearson Street  
Des Plaines, IL 60016  
[312] 296-8707

**Turf**  
PRODUCTS, LTD.

2 N 255 County Farm Rd. West Chicago, Ill. 60185  
Phone 668-5537

## SUPPORT YOUR ADVERTISERS



# par ex<sup>®</sup>

PROFESSIONAL PRODUCTS

IBDU<sup>®</sup> (31-0-0) and PAR EX<sup>®</sup> fertilizers with IBDU are custom formulated for high maintenance, high quality turfgrass. Check with your local PAR EX territory manager or distributor for other available grades.

Turf Products Ltd.  
West Chicago, IL 312/668-5537

Paarberg Chemicals Co.  
South Holland, IL 312/474-3086

Olsen Distributing Co.  
Barrington, IL 312/381-9333

Professional Turf Specialists  
Normal, IL 309/454-2467

Cliff Belden  
Eglin, IL 312/697-IBDU

Rowland's Equipment, Inc.  
Barrington, IL 312/381-1084





# TERSAN® 1991 + Daconil 2787

**Put the proven performers together for even better control of brown patch, dollar spot and other serious diseases.**

TERSAN® 1991 fungicide and Daconil 2787\* fungicide are two of the most effective disease control products on the market. And now, these proven broad-spectrum fungicides are labeled for tank mixing. Together, they give you even better control of major turf diseases than either product used alone. You get improved control, yet without the problem of phytotoxicity common with some tank mixes.

A TERSAN 1991/Daconil 2787 tank mix will give you consistent performance against brown patch and dollar spot—the two most troublesome diseases on turf each summer. You'll also get strong action on leaf spot and other important diseases. It's the kind of performance superintendents depend on when a quality course can't be compromised.

\*Daconil 2787 is a registered trademark of Diamond Shamrock Corporation.

Tank mixing brings other advantages, too. With TERSAN 1991 in your tank, you get systemic action for protection from within the turf plant. Disease control is longer-lasting and is less affected by rainfall or frequent irrigation. Tank mixing fungicides with different modes of action also reduces chances of benzimidazole resistance. You help insure the long-term effectiveness of TERSAN 1991 in your disease control program.

This year, plan on using TERSAN 1991 in combination with Daconil 2787. It's the tank mix turf diseases can't match.

*With any chemical, follow labeling instructions and warnings carefully.*

