



MILAEGER

Well and Pump Co.

GOLF COURSES
INDUSTRIES
MUNICIPALITIES
SUBDIVISIONS

- Deep Well Drilling and Pump Installation—
- Well Development by Acidizing & Shooting—
- All Makes of Pumps Repaired—
- 24 Hour Service—
- TONKA—Water Treatment Equipment—

BYRON JACKSON PUMPS

Division of Borg Warner Corporation
Line Shaft Turbine Pumps and Submersible
Pumps to 700 HP and 1,200 ft. Settings

Servicing Wisconsin and Illinois
for Over 60 Years

20950 Enterprise Ave.
Brookfield, WI 53005
[414] 784-3960

640 Pearson Street
Des Plaines, IL 60016
[312] 296-8707

NORTHBROOK SUPPLY COMPANY
933 Cedar Lane
Northbrook, Illinois 60062
312 — 498-4491

Your Headquarters for Maintenance Supplies

Hand Tools	Aerosols
Power Tools	Hand Cleaners
Piping Tools	Chain Supplies
Shovels	Safety Equipment
Rakes - all kinds	Locks
Fasteners	Battery Cables
Maintenance Chemicals	Ladders
Drills	Metric Fasteners
Electrical Terminals	Brushes

This is just a partial list

... We will Help you with those Hard to find Items ...
Call us today 312—498-4491



par ex®

PROFESSIONAL PRODUCTS

IBDU® (31-0-0) and PAR EX® fertilizers with IBDU are custom formulated for high maintenance, high quality turfgrass. Check with your local PAR EX territory manager or distributor for other available grades.

Turf Products Ltd.
West Chicago, IL 312/668-5537

Paarlberg Chemicals Co.
South Holland, IL 312/474-3086

Olsen Distributing Co.
Barrington, IL 312/381-9333

Professional Turf Specialists
Normal, IL 309/454-2467

Cliff Belden
Eglin, IL 312/697-IBDU

Rowland's Equipment, Inc.
Barrington, IL 312/381-1084



These pictures represent the speakers at the
M.A.G.C.S. 29th annual Turfgrass Clinic at
Medinah C.C.



John Berarducci



Dr. W. Daniel - Don Pakkala



Don Pakkala



Dave Wehner, D. Smith, D. Roberts, Pete Leuzinger



Dr. Roscoe Randall



Charles H. Eckstein



Carl Landgrebe



Bill Lindley



James D. Mello



Joseph Rossillion



William G. Buchanan



Stanley Zontek



Jeff Rivard



Ted Horton

GREENKEEPER, GOLF'S FORGOTTEN MAN

The feats of golf's anointed in the enlightened age
 Are spread with care meticulous upon the printed page.
 We read of Pro and Champion -- and of some less-gifted
 chaps
 Who break into the 60s (with the aid of handicaps),
 But it's really quite unlikely that you'd recognize the
 name
 Of one who does as much as they to help along the
 game.
 I mean the guy who grows the grass - the man behind
 the scenes,
 That unobtrusive character -- the Keeper of the Greens.
 He needs a milder temper than the meekest of the
 saints.
 The only time he hears from us are when he hears
 complaints:
 The pins are here instead of there; the rough's too
 rough,
 The greens at once are far too fast, too slow, too hard,
 too soft.
 His name is mentioned only when we put him on the
 pan--
 When cheers are being handed out, he's Golf's
 Forgotten Man.
 How often do we pause to think, when we espy our pill
 Perched neatly on the velvet turf, of all the toil and skill
 That put the emerald carpet there? Not often, sirs. But
 when
 The ball is in a divot-hole, that's something else again.
 Where is that dot-dash greenkeeper, is what we want to
 know.
 We'd like to tell him off, but good, the (censored)
 so-and-so,

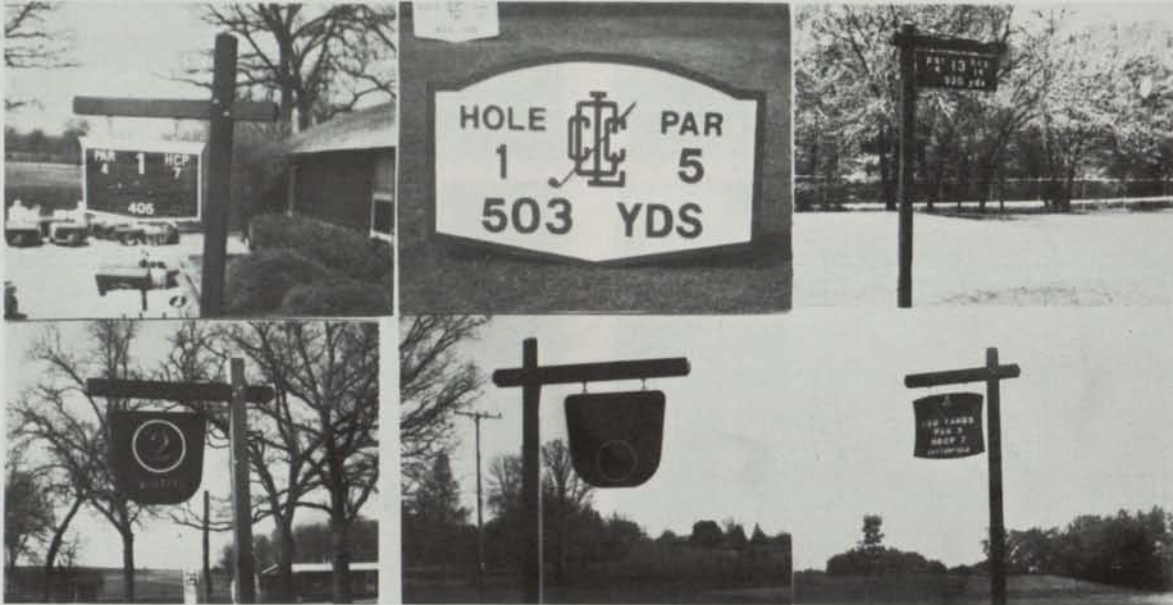
**"Your own sign ideas
engraved in wood"**

The finest custom-carved engraved and sandcrafted wooden markers ...
Distinctive design and natural beauty.

Prompt Quotations
Winter Prices - Nov. - April



Bob Howe
PARKWAY PRODUCTS COMPANY
7318 West Route 120
Box 487
McHenry, Illinois 60050
Telephone 815/385-0825



MEET THE FAMILY

Come meet the members of the growing Pickseed family of fine grass seeds. They're all achievers each strong and gaining recognition in the grass seed industry for individual quality and performance. It's not every grass seed that gets to bear the Pickseed Family name. We're choosy and proud of it! Rigorous testing and evaluation assures that each new variety meets high Pickseed standards before it's ready for a public introduction. The Pickseed family name an assurance of quality from us to you.

PICKSEED
PICKSEED WEST Inc.

P.O. Box 888 Tangent, OR 97389 (503) 926-8886

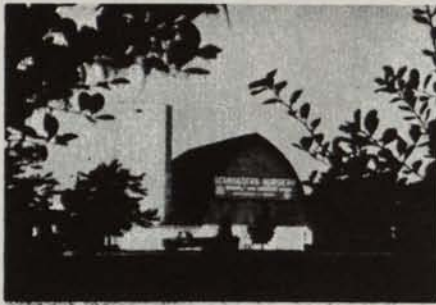


Illinois lawn
equipment inc.
Orland Park, Ill.
(312) 349-8484

**Our parts department hustles
to get your orders shipped —
You'd have to look a long, long time
to find one more equipped.**

Our 28th Year

Schroeder's Nursery, Inc.



TREES - EVERGREENS - SHRUBS

Specializing in large Caliper shade trees and Ornamentals.
We also offer complete installation service.

TELEPHONE: (312) 546-9444

Arthur E. Schroeder
Richard A. Schroeder
Don Virgens

GRAYSLAKE, ILLINOIS
23379W Route 60

Nursery on Rt. 60 between Rtes. 12 (Volo) and 83 (Ivanhoe)

Nels J. Johnson, Tree Experts, Inc.

SINCE 1930

Nels J. Johnson, Sr.
Nels J. Johnson, Jr. - Karl G. Johnson
Complete, economical tree service for Private Estates,
Parks, Municipalities, Golf Courses, Cemeteries,
Schools, Industrial Areas.

All phases of Arboriculture, Diagnosing, Pruning, Treating,
Transplanting, Fertilization, Hydraulic and Mist Spraying.
Removals. Stump Routing. Municipal Forestry. Chemotherapy
for elms, and other trees.

• **FULLY INSURED** •

Graduate -- Licensed Arborists

MAIN OFFICE - 912 Pitner Avenue, Evanston, Illinois 60202
Phones: GRenleaf 5-1877 - GR 5-5255
Hinsdale, Illinois - FA 5-0970

- All Major Turf Supplies
- Par-Ex
- Bean Sprayers
- DuPont
- Chipco
- Vertagreen
- Daconil - Dacthal

Quality — Value — Service

PAARLBERG CHEMICALS

1840 E. 172nd & Paxton, So. Holland, Ill.
312 - 474-3086 312 - 258-3485

LABOR-SAVING GRASSES



GLADE KENTUCKY BLUEGRASS

- Does Great in Sun Or 60% Shade
- Excellent Disease Resistance to Powdery Mildew — Stripe
Smut — Leafspot — Rust
- Quick Recovery — Fast Germinating

Adelphi

KENTUCKY BLUEGRASS

- Greens Up Earlier in Spring — Stays Green Longer In Fall
- Great Resistance To Disease

CITATION

FINE LEAF PERENNIAL RYEGRASS

- Improved Mowing Qualities
- Blends Well With All Other Grasses

- Low Growing —
Tolerates Close
Mowing

- Performs Great In
Hot, Humid Areas

**FOR MORE DETAILED INFORMATION AND
TEST RESULTS WRITE TO:
VAUGHAN'S**

5300 Katrine Avenue, Downers Grove, Illinois 60515, (312) 969-6300
WAREHOUSES LOCATED IN:
Bound Brook, New Jersey • Landover, Maryland • Ovid and
Grand Ledge, Michigan • Spokane, Washington

The best in turf supplies -
LESCO 100% Sulfur-Coated Fertilizers,
golf course accessories, chemicals including

LESCOSAN

A highly effective pre-emergence
(800) crabgrass and poa annua control (800)
321-5325 362-7413
NATIONWIDE Available from: IN OHIO

LAKESHORE EQUIPMENT & SUPPLY CO.
"Home of LESCO Products"
300 South Abbe, Elyria, OH 44035

MCGinty BROS., INC.

LAWN CARE TREE CARE
Weed, Crabgrass and Disease Tree Spraying, Feeding,
Control/Fertilizing Surgery, Trimming, Removal

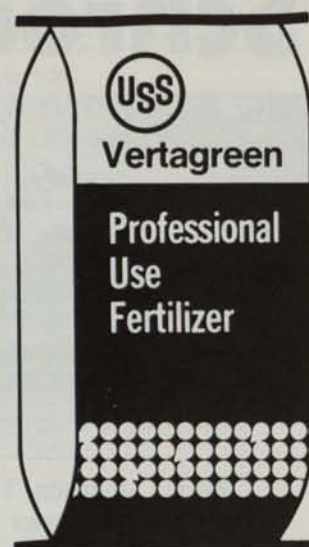
HYDROSEEDING

RT. 2, BOX 518, LONG GROVE ROAD
LONG GROVE, ILLINOIS 60047 / (312) 438-5161

USS Vertagreen... A product for all reasons



Fairways, tees, greens. Each has its own special set of needs. And each one needs its own special USS Vertagreen product for the most professional and economical results. You know you can depend on USS Vertagreen. Call your distributor today!



USS Agri-Chemicals
Division of United States Steel
P.O. Box 1685, Atlanta, Georgia 30301

Prayer Breakfast Speaker in New Orleans

DR. IRA LEE ESHLEMAN Biographical Sketch

Dr. Eshleman, better known as "Doc" or "Chappie" to the professional football world, is President of Sports World Ministries, Inc., headquartered in Atlanta, Georgia. His unique and colorful ministry to pro athletes began 14 years ago when he became the first full-time chaplain to the National Football League. His involvement sprang from a deep-seated conviction that if he could help the Pro find a center to his life in Christ and then teach him to communicate his faith, he could reach a great segment of the student world and all sports-minded people.

The 17 years "Doc" was pastor of one of Florida's largest non-sectarian Christian churches. He also founded and directed **Bibletown U.S.A.**, a conference center with a global outreach from the heart of the fabulous Gold Coast. Some know it as "America's Capital of Sacred Music", others for its missionary outreach, retirement community of 600 homes and its magnificent auditorium. His direction of this tremendous project led to his selection as "Man of the Year" for the State of Florida in 1960.

"Doc's" commitment to Christ followed five years in the business world, at which time he entered the Moody Bible Institute to prepare for a foreign mission assignment. His honorary doctorate was conferred upon him after serving two years as the World's Fair Person in New York. There he produced 36 color telecasts for RCA and 45 sacred concerts for the Fair

authority. Earlier he became well-known to the Christian community for his weekly broadcasts as **Radio Bible Commentator**, his weekly TV show **Gold Coast Echoes**, and for directing two of Billy Graham's earlier crusades.

Some of the exciting fruits produced by the Spirit in this chosen servant are reflected in four books by different authors: **God's Voice To the Pro**, **Somebody Called Doc**, **12th Man in the Huddle** and **The Making of a Super Pro**.

"Doc" says the most fruitful time of his ministry began in 1967 traveling the NFL circuit and implementing the pre-game chapel services. He started similar programs in the Canadian Football League, launched post-season seminars for the pro athletes, and now ministers to hundreds of thousands of students each spring through a team of 20-25 committed and trained NFL stars.

The chaplain insists that speaking at eight Super Bowls and 10 Pro Bowls is not to be compared to the thrill of seeing thousands of students respond each spring to God's solution to emptiness and boredom; or to see the fantastic response he receives at conventions and church convocations when he simply tells what God's Spirit is doing behind the scenes in pro sports.

Although "Doc" loves to talk about some of the great names in sports who are very special to him, he and his wife Viola have four children of their own who hold a special place in his heart. Paul, assistant to the president of Campus Crusade for Christ, and Sharon, wife of a vice-president of the Crocker Bank, both live in California. Bonnie and her husband have a Cadillac-Olds agency in Michigan and Dennis is County Administrator in Palm Beach, Florida.

WILKOMEN IN EUROPA

If you've never found the occasion to travel to Europe, I would highly recommend it. It's an excursion that every American should take at sometime in their life. Me and my two favorite ladies spent two October weeks touring Europe this fall.

No where else on our planet can one enjoy so many varied cultures, menus, customs, languages, traditions and architecture in so small a geographic area. When you're in Dutchland's Bavarian Alps you're only two hours from the gold and silver jewelry gems of Florence, and three hours more to Rome's ruins. All travel times, of course, given based on 200 Kilometer per hour (120 miles/hour) autobahn cruising speed of the Mercedes Benz.

When you're nestled in the grape growing vineyards of the Rhine River Valley you are only four hours from Paris and less from Amsterdam. But, please no wine probing before you leave. Wine probing? Oh, yes that's where you visit several wineries' guest houses to taste their various wines. Visability after wine probing is not good.

However, if you're not so inclined to drive yourself, Europe has the most progressive, modern and timely passenger rail system in the world. You honestly must be watching out the window of your train in Zurich, Switzerland to know when the train has started, because the tracks are ultra smooth.

The Europeans need no assistance in maintaining a self-sufficient economy. From agriculture to commerce they have impressive progressive standards. It's pleasurable to enjoy the transition from a modern industrial city like Frankfurt and its accelerated pace to the live-as-you-go reduced pace of resort areas such as Berchtesgarden and Garmish-Partenkirchen. Waking up respectively to the hum of trains, buses and cars contrasted with arising at the base of the Bavarian Alps to total silence broken only by the clanking cow bells of the grazing dairy cows.

Throughout Germany you'll have a chance, by stopping at a Zimmer Frei (Room Available) sign, to stay with a rural family. You'll be treated royally. More than likely, you'll be given a room in a large structure of Bavarian architecture which quite likely serves as shelter for all family members to include the family livestock. Don't let that bother you, however, because the German's housekeeping standards make their barns livable for people. The rooms will be so clean that you could literally eat off the floor. That reminds me of the time in 1972 when we stayed with a family on the Bodensee along the Switzerland Germany border. After my wife inquired about the beautiful sheets we had slept on the night before, the Frau told us that they were hand embroidered wedding presents from a relative. Also, the fragrance of the fresh-cut alfalfa hay stored in the barn below that day was fitting.

Then you'll also be invited down to their breakfast table to enjoy some homecooked German pastries and rye bread with homemade fruit jams. Try to match that in the land that Columbus found.

I believe above all else my greatest pleasure in Europe is traveling the winding roads of the Bavarian Alps and seeing the small villages nestled in the valleys among the mountain ranges. Traversing the narrow hair pin curves is for only the skilled driver. But, one of the rewards of your journey will be the multitudes of flowers you will see spilling from the balcony and window flower boxes. Flowers are everpresent. Seldom do you see a rural home in Germany that isn't adorned with flowers throughout.

There are many attractions in Europe to suit almost any traveler's taste.

But, if you have only a limited stay don't miss these attractions:

British Museum and changing of the guard in London.

Berchtesgarden and Garmish-Partenkirchen in the Bavarian Alps of Germany.

Vienna the Hapsburg residence and the Vienna Woods.

The Louve Museum in Paris.

Can't miss Rome and its ancient ruins.

Black Forest in Germany.

Salzburg, Austria to see the sites where the classic film Sound of Music was filmed.

Also while you're in Austria the small resort town of Lucern on the shores of a crystal clear lake with surrounding mountain ranges will leave you breathless.

And castles galore too, including Nueschwanstein, Linderhof and the Bestiles of Rotemburg.

The cathedrals, castles and Alps are to be cherished, but the real take home value of your trip is embodied deep in the culture of the older villages. It's in the way Europeans respect their natural resources; the centuries old work ethic resulting in an industrious healthy economy with clean cities and countryside; the high priority placed on national and citizen welfare that emanates from their strong family structure. These are reinforcements to anybody's value system that are a worthy experience.

Auf Wiedersehn

But, I'll return again.

Carl Landgrebe

THE TRIPLEX "RING"

Mowing Practices

Sometimes the triplex ring syndrome can be completely resolved by modifying mowing procedures. To begin with, insist that the mower go more slowly as he makes the final pass around the green with the triplex. A fast-running vehicle will do much more damage during a turn than a machine that is moving slowly.

Because the symptoms of triplex ring will tend to be more pronounced during stress periods, especially during the summer, any practice or schedule which relieves the severity of the wear or decreases the number of times the perimeter area is cut during that time will help reduce turf damage. If the grass is not growing too fast, skip the cleanup pass every other day or bring the final cut in from the edge by six to 12 inches every other day so that the tires do not always travel in the exact same path. Consider using hand mowers on the greens which exhibit triplex ring symptoms, however, so the time needed to mow a few of the worst greens with hand mowers is usually not prohibitive. A good alternative would be to use the triplex to mow the green but use the walk-behind mowers to make the cleanup passes, a practice which many clubs use successfully for all 18 greens throughout the season. Other alternatives would involve mowing every other day with hand mowers or using triplex mowers only on weekends. Some golf courses use the triplexes only during the spring and fall, when the labor supply is likely to be at its lowest point.

Finally, raising the cutting height slightly during stress periods can help, but this should be something of a last resort. If a program of light, frequent verticutting is used to groom the greens, be sure that a perimeter pass is **not** made with the verticutting units.

FOR THE FINEST IN SOD

THORNTON'S TURF NURSERY

312 - 742-5030

Rt. 2 Box 72

Elgin, Ill.

ANNOUNCING

DESTRUCTIVE TURF INSECTS is the title of a new long-awaited book by Dr. Harry Niemczyk, turfgrass entomologist. The book covers pests of warm and cool season grasses, contains over 130 color photos and is written in easy-to-read language. Included is a color photo guide to identifying insects and mites that inhabit the soil, thatch, leaves and stems. Nine chapters cover: Life Cycles; Principles of Control; Preventive Programs for Select Major Pests; Equipment and Methods of Detecting Turf Insects and References. Available October 20, 1981, the book is 8 x 11, spiral bound with a durable plastic cover. \$18.95 plus \$1.25 per copy postage and handling. HDN BOOK SALES, 2935 Smithville W. Rd., Wooster, OH 44691.

I've trod the links with many a man,
And played him club for club;
"Tis scarce a year since I began
And I am still a dub.
But this I've noticed as we strayed
Along the bunkered way,
No one with me has ever played
As he did yesterday."

It makes no difference what the drive,
Together as we walk,
Till we up to the ball arrive,
I get the same old talk:
"To-day there's something wrong with me,
Just what I cannot say.
Would you believe I got a three
For this hole--yesterday?"

I see them top and slice a shot,
And fail to follow through,
And with their brassies plough the lot,
The very way I do.
To six and seven their figures run,
And then they sadly say:
"I neither dubbed nor foozled one
When I played--yesterday."

I have no yesterdays to count,
No good work to recall;
Each morning sees hope proudly mount,
Each evening sees it fall.
And in the locker room at night,
When men discuss their play,
I hear them and I wish I might
Have seen them--yesterday.

Oh, dear old yesterday! What store
Of joys for men you hold!
I'm sure there is no day that's more
Remembered or extolled.
I'm off my task myself a bit,
My mind has run astray;
I think, perhaps, I should have writ
These verses--yesterday.

Edgar A. Guest

SUCCULENTS AS HOUSE PLANTS

Succulents are plants with thick, juicy stems and/or leaves. They are found in many plant families. Succulents generally make good house plants because they do not require much care and grow well under average home conditions of higher temperature and low humidity. "Succulent" is just a descriptive term - not a botanical classification, says James A. Fizzell, University of Illinois Horticulturist in Cook County.

The cactus is a favorite among succulents used as house plants. Some are **Echinocactus**, **Esposte**, **Echinocereus**, **Opuntia**, **Ferocactus**, and **Trichocereus**.

Another popular group of succulents is the Aloes. These are available in many forms. Two well-known ones are the **Barbados aloe [Aloe vera]**, and the **Aloe variegata**. Sap from these plants is often used on burns. One of the Euphorbias, **Euphorbia lactea**, is also often selected as a house plant. This Euphorbia grows erect like a tree, has a thorny, three-sided trunk and small leaves that end to drop off soon after they are formed. It is commonly called Crown of Thorns.

The Crassula is another well-liked succulent group. A prize member is the jade plant. (**Crassula argentea**).

Several of the Sedums - **Sedum pachphyllum**, **S. adolphi**, and **S. morganianum** - make good pot plants. The **morganianum** - commonly called the burro's tail - is used in a hanging basket.

Other well-known succulents are the **Byrophyllum** and **Kalanchoe**.

The cultural care (soil, temperature, watering) of all the succulents is similar. Generally, they need a porous soil mix that is well drained and has some organic matter and soil in it. Succulents perform best in a reasonably rich soil mix. The more tropical succulents prefer soil on the acid side, while the desert-type succulents like slight alkalinity. A soil mix of one part garden loam, one part organic matter such as sphagnum moss, and two parts coarse sand or perlite works well.

Most succulents prefer sunlight. A few will grow under lower light conditions but will have different colors than when grown in full sunlight.

All of the succulents need good air circulation.

As a group, the succulents require less water than many other house plants. They can go for longer periods between waterings and can get on the dry side with less damage than many other plants. Overwatering results in root loss and wilting of succulents.

During the longer days of the growing season when the plants get more light, they need more water. During the shorter days of winter, they need less.

Succulents should be fertilized when the plants are growing actively (usually the longer days of spring and summer). Never use more than one-fourth to one-third of the amount recommended on any of the house plant fertilizer packages. Discontinue feeding when the plants show no further growth.

James A. Fizzell, Sr. Extension Adviser

FOR SALE

2 new 1979 never been used Jacobson Commercial 20'' Rotary Mowers \$350.00 each.

1964 Worthington 6 blade 5 gang rough mowers, including frames. Reel stock good \$2000.00.

Contact **Ed Fischer**, Old Elm Club, 312 — 432-6276.

J. B. DESIGN, INC.

Landscape Design & Construction

- Spreading trap sand in winter
- Tree removal and stump grinding

Call John Jackman or
Jim Bussey

for more information 668-8129

ROSEMAN

2620 CRAWFORD AVE. 864-1842
EVANSTON, ILLINOIS

TURF EQUIPMENT HEADQUARTERS

ROSEMAN GANG MOWERS

TILLER RAKES

LELY SPREADERS

SEEDERS

ROTO TILLERS

HOMELITE CHAIN SAWS

FORD TRACTORS

DEDOES AERIFIER

LOADERS

LEAF MULCHERS

ROTARY MOWERS

HOMELITE PUMPS

SALES • SERVICE • PARTS • RENTALS

BOJO TURF SUPPLY CO.

ALL MAJOR TURF SUPPLIES

BoJo

TURF
SUPPLY CO.

- PAR-EX
- Vertagreen
- Du Pont
- Diamond Shamrock
- Sand Blasters
- Cyclones
- Fore Par

R R 1, Box 52
Peotone, Ill.
312-258-3485

ASPHALT DRIVEWAYS — PARKING LOTS — ETC

"Golf Course Work a Specialty"

LEMONT PAVING CO.

SAND & STONE

115th & Archer Ave (Rt 171) - Lemont, Illinois

RAY MURPHY

257-6701

On February 3, 1982, the USGA Green Section Educational Conference will be conducted at the New Orleans Hilton, New Orleans, Louisiana. The program will be entitled "The Good Earth Needs Good Golfing Turf". The program will start at 9 a.m. Carl H. Schwartzkopf will be the morning session chairman. The afternoon session will start at 1 p.m. and be chaired by Charles B. White, ending at 2:30 p.m.

Arthur Clesen Inc.

Distributors

Chemicals
Fertilizers
Grass Seed
Hydro Mulch
Hose - Rakes
Ice Melting Material

Marking Paint
Mulches, Bark
Peat Moss
Oil Dri
Sprayers
Spreaders

543 Diens Drive
Wheeling, IL 60090 (312) 537-2177

Illinois Battery Distributors, Inc.

Aurora, Illinois

Serving the industry for 27 years

OFFERS

- Highest quality of batteries
- Unexcelled dependability & performance
- Batteries in stock for electric cars, gas cars and course equipment.
- Service Second to None
- Warranty program & Free delivery

CONTACT

Illinois Battery Distributors, Inc.
Aurora, Illinois

897-1226