



MIDWEST BREEZES

Most golf course Supts. had hopes that a good spring would be a prelude to the start of a beautiful summer. It has turned out to be the opposite. Poa Annuua has moved in with a bountiful crop of seed. The old saying used to be that when Poa Annuua produces a large crop of seed it is a sign of a hot summer. This is nature's way of being sure there will always be Poa Annuua in the future years. Should this be true, be sure your air conditioner is in good order.

Several golf courses in the Chicago area have started to change their bluegrass turf fairways over to bentgrass. This editor hopes their decision is one that they will not regret. A transition such as this requires considerable time and patience. It will not happen in one year or for several years thereafter, and in the meantime Poa Annuua loves the kind of maintenance that the bentgrass requires. Fairway maintenance budgets will need to be increased. More water will be necessary. More fungicide will be required, and more fertilizer. I hope all of these requirements were taken in consideration before this type of transition went into effect.

Many people who can speak with authority have stated that in the not too distant future there will be a deficiency of water that will be available for irrigation purposes.

I am sure many of us know that bluegrass requires less water to survive; it may turn brown and look dead, but a good watering will bring it back to life. This is not true of bent or Poa Annuua.

Carl Langrebe, Supt. at Hinsdale G.C., reports that his club is in the process of installing a Toro automatic irrigation system on the golf course. I am sure this will make Carl happy when it is completed. No more worrying about the night watering man. All of the pipes smaller in diameter than four inches are being installed by the pulling method. This makes a very neat installation and very little inconvenience to the golfer.

There is a new turfgrass fungus disease on golf course putting greens in the Chicago area. After a relatively moderate infestation in 1979, it has become very serious in 1980. It is called Red Leafspot (*Erythrospilum*). So far it has infected one specific strain of bentgrass found on putting greens. The severity of the disease has made it necessary for some golf courses to remove the old sod and plant new sod of a different strain of bentgrass. Various fungicides that have been recommended by universities that are doing turfgrass research work have not been successful. The golf course superintendent are doing everything possible to find the cause of Red Leafspot and what, if anything, can be done to correct it.

At 2:30 in the afternoon of June 7th a severe thunderstorm that produced hail up to the size of a tennis ball caused significant damage to the greens of the Chicago Golf Club in Wheaton, Illinois. Most of the greens have the appearance of having up to several thousand ball marks on them. Some of the cars in the parking lot had windows broken by the hail.

The M.A.G.C.S. June 12 meeting held at Ridgemoor C.C. was attended by over seventy members. 58 of these played golf on a super conditioned golf course made possible by the knowledge of our host supt., **Peter Hawn**. The fairways were just beautiful. One would hate to take a divot. If it happened I am sure he or she would fell very badly.

Not only the golf course was excellent, the strawberry patch was equally as good. It is too bad if you missed it. That is your penalty for driving the ball down the center of the fairway.

The dinner was just great. We thank Ridgemoor C.C. members and all the employees for making this a most enjoyable day.

THE MOLE - June 6, 1980

At the Riverside meeting of the MAGCS in May a discussion about fuel prices and availability came up. The mowing practices of some superintendents have changed permitting longer grass blades on the fairways because of less frequent mowing. Some salesmen territories were also cut to provide more efficient servicing of customers. And fuel efficient cars and trucks are replacing the larger ones.

On May 15 at Grayce's Frankfort Inn a fellow superintendent was honored by over 50 of his fellow superintendents. **Al Lagman** was surprised when each of the honoring superintendents brought a golf cap from their pro shop for Al to wear while fishing in Northern Michigan. Al has served his term as Superintendent at Kankakee Country Club, Old Oak Country Club and recently at Palos Country Club.

While superintendents in the Chicago area are recently using female help on their grounds crew, women's lib has been demonstrated in the Golf Course Superintendents ranks for over 40 years. Next year, **Arlene Sliker** will retire from Streator Country Club. Arlene has been Superintendent at Streator since the early 40's. **Joan Essman**, Arlene's daughter, will be taking over when Arlene retires. No place for male chauvanism in Streator.

An old friend, **Leon Short**, is closing the doors on his operation in East Peoria this month. Leon's son, **Bob**, has decided to change his line of work and Leon is planning to retire to Winterhaven, Florida. Leon says he will be sadly disappointed if any friend is near Winterhaven and doesn't stop in to say hi.

Hi Ray;
One of the wealths of early to rise!

MORNING GLORY

To watch the morning Sun,
Climb it's stairway in the sky.
And hear the birds sing a song of cheer,
They know the reasons why.
One cannot help but marvel,
At the start of every day.
How all of nature joins together,
To sing, "Hip, hip, harrah!"

Superintendently,
Kenneth R. Zanzig
Green Garden C.C.

PRECISION BLENDED TOP DRESSING

Custom blended to your specifications
by our modern equipment.

*Buy when you need —
Eliminate costly storage*

We sell an air dried, uniform and
free flowing top dressing.

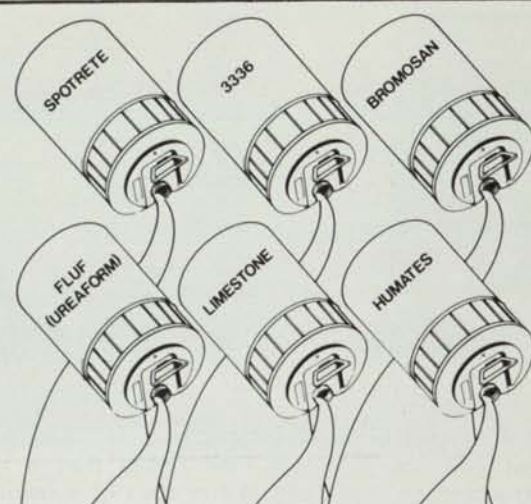
ASK THE MAN WHO HAS USED IT.

HUMUS — BLACK SOIL

HENRY FRENZER

Area Code 312
658-5303

620 Webster St.
Algonquin, Ill.
60102



FLOWABLES
TOMORROW'S TECHNOLOGY TODAY

WA-CLEARY CHEMICAL
CORPORATION
1049 SOMERSET ST., SOMERSET, N.J. 08873 • (201) 247-8000

Nutrient deficiencies, weeds, diseases, thin turf, insects.

For the superintendent
who has everything . . . or
anything . . . or who just wants
to make a good thing better . . .
ProTurf offers research tested,
golf course proven professional
turf products.

Just give me a call.



A division of
O. M. Scott & Sons

LEE OVERPECK
219 GRANT DRIVE
BOLINGBROOK, IL 60439
PH: 312-759-7081

DICK EVENSON
443 WOODVIEW DR.
SUN PRAIRIE, WI 53590

BILL KENEIPP
1785 HINSDALE DRIVE
DECATUR, IL 62526
PH: 217-877-8929



Sprayers for Everyone

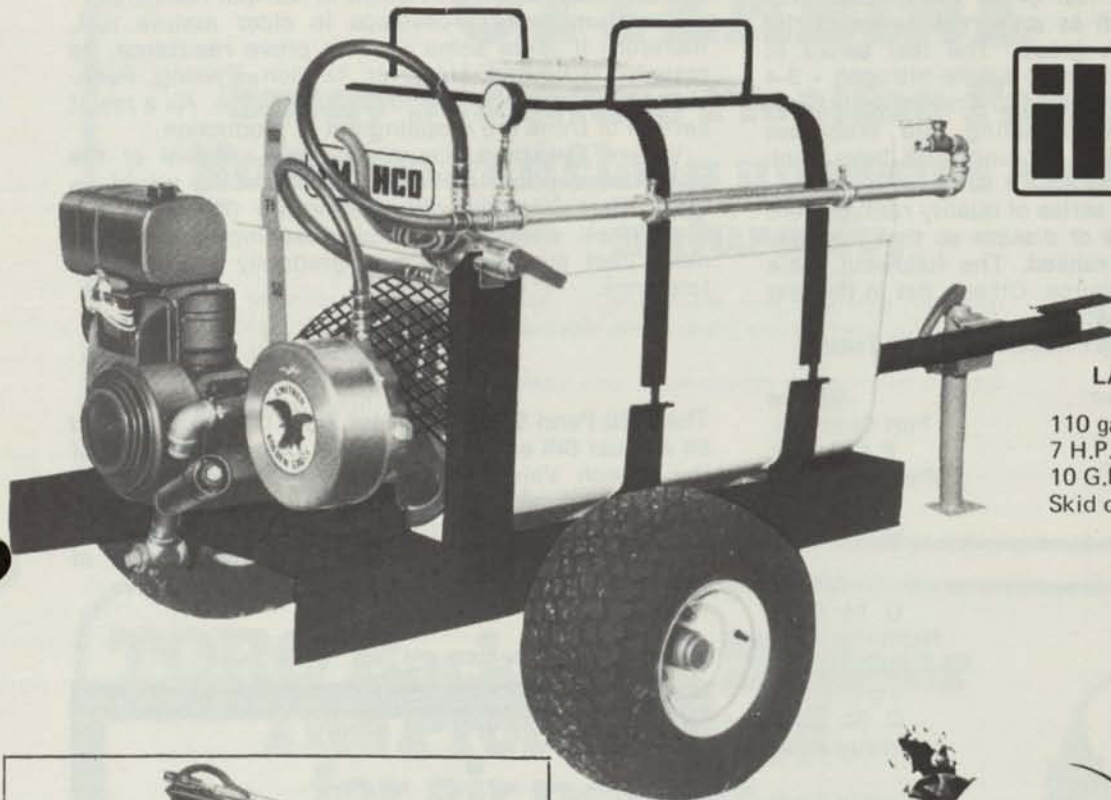
3 YEAR WARRANTED FIBERGLASS TANKS
IN STOCK SPECIAL OFFERING

"SMITHCO" the name in quality, dependable equipment features a complete line of sprayers with 25 gallon to 500 gallon fiberglass tanks. Pumps from 5 G.P.M. to 25 G.P.M. Warranted for 2 years.



**illinois lawn
equipment inc.**

Orland Park, Illinois 60462
(312) 349-8484



LARK SUPREME MODEL 7910

110 gallon fiberglass tank
7 H.P. Kohler engine
10 G.P.M. Golden Eagle pump
Skid or trailer mounted

From \$2,310.00



Model 3325

CHICKADEE MODEL 3325

25 or 55 gallon poly tank
3 H.P. Briggs engine
Constant agitation for wettable powder
Hydro-piston pump
3 G.P.M. at 300 P.S.I.
Professional quality

From \$578.00



**LARK P.T.O. FOR CUSHMAN MODEL 7904
AND E-Z GO TRUCKSTERS**

110 gallon poly tank
25 G.P.M. at 50 P.S.I. pump
Applies 0.1 to 5 gallon per acre
P.T.O. drive

From \$1,148.00

BLUEGRASSES - 1980

W. H. Daniels, Turf Research, Purdue University

Somewhere in Indiana (and other states) about 30 named cultivars of Kentucky bluegrasses are available in 1980. More than 70 have been named, and many experimentals are in tests. Currently we have 130 bluegrasses in test plots at Purdue, in addition to our Purdue experimentals. (Also in tests are 60 ryegrasses and 80 fescues).

Turf managers are blending three to five cultivars available as one way of utilizing the preferred among those available. Seed companies have many mixes, and for a fee, will blend requested cultivars.

In 1972 a cooperative test of 38 bluegrasses was arranged by Dr. J. Duich as a representative of the Northeast Turf Research group. The test series at Purdue has been maintained at ample nitrogen - 3-4 lbs. N/yr. - with irrigation to avoid drought, with a cut 1 inch or less plus weed killing and crabgrass prevention with herbicides. No fungicides have been used.

In the period 1975-79 a series of quality ratings were taken after stress periods of disease so that ten data were summarized, then ranked. The following table gives ranking and main source. Others, **not in the test itself**, but available, are listed.

Kentucky Bluegrasses - Results of 72-79 Tests

*available

Rank	Cultivar	Source
1	Brunswick	Turf Seed Inc.
* 2	Plush	F.F.R. Inc.
* 3	Touchdown	Pickseed West
* 4	Merit	O. M. Scott
5	Melissa	O. M. Scott
6	Monopoly	
* 7	Adelphi	Adikes
* 8	Victa	O. M. Scott
* 9	Rugby	Northrup King
*10	Cheri	Jacklin Seed
*11	Sydsport	Burlingham
*12	Vantage	O. M. Scott
*13	Parade	Northrup King
*14	Kenblu	
*15	Glade	Jacklin Seed
*16	Baron	Loft
*17	Park	Minnesota
*18	Bonnieblue	Burlingham
*19	Fylking	Jacklin Seed
*20	Merion	(decreasing use)
21	Granada	Northrup King
22	Enoble	Van Engelen E
*23	Majestic	Burlingham
24	Entopper	Van Engelen E
25	Windsor	O. M. Scott (discontinuing)
26	Delft	Cebeco E
27	Geronimo	
*28	Nugget	Pickwest Seed
29	Campina	(leafspot is severe)
30	Pennstar	(discontinuing)

Others for Sale - Not in Test

*	A-20	Warren's Turf
*	Bristol	O. M. Scott
*	Bensun, A-34	Warren's Turf
*	Ram-I	Loft
*	Enmundi	International Seeds E
*	Wabash	Jacklin (1980)
*	Aquila	Northrup King
*	Birka	Burlingham
*	Delta, Newport	common

America
Shasta
Columbia

Pickwest Seed

Some shade tolerance is claimed for Glade, Nugget, A-34, and Bristol. Nugget is slow growing and a poor competitor. Resistance to leafspot and powdery mildew plus low growth character would improve shade tolerance of a cultivar.

Several faster growing types include Wabash, Parade, and Touchdown.

Damage from leafspot and Fusarium disease are keys to the reduced performance of many bluegrasses. Resistance to these, plus protection from competition usually assures continued stands. Most breeding has been to select for improvement in leafspot resistance.

Fusarium roseum develops in older mature turf, therefore it takes some time to prove resistance, so research is limited. However, Merion, Fylking, Pennstar, Windsor are known to be susceptible. As a result several of these are dropping out of production.

Where **Fusarium** occurs regularly removal of the known susceptible cultivars and resodding would be ideal. Complete kill with glyphosate (Roundup TM Monsanto), dethatching, and reseeding is an alternate. Just overseeding may gradually improve the tolerance.

The 1980 Penn State Turfgrass Field Days will be held on August 6th and 7th. The Field Days will be held at the Joseph Valentine Turfgrass Research Center at The Pennsylvania State University, University Park, Pennsylvania. For further information contact: Dr. Joseph Duich, 21 Tyson Building, Department of Agronomy, University Park, Pennsylvania 16802.

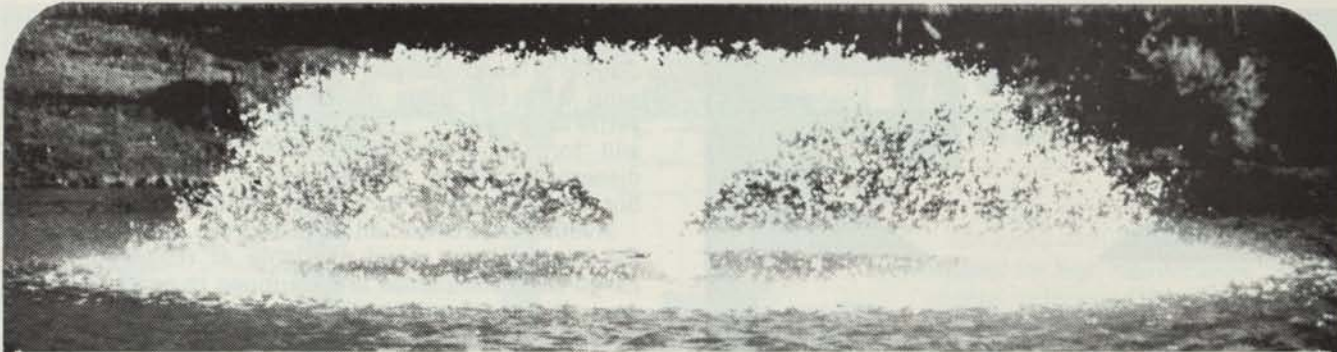
- All Major Turf Supplies
- Par-Ex
- Bean Sprayers
- DuPont
- Chipco
- Vertagreen
- Daconil - Dacthal

Quality — Value — Service

PAARLBERG CHEMICALS

1840 E. 172nd & Paxton, So. Holland, Ill.
312 - 474-3086 312 - 258-3485

Rogers' Pump Sales and Service
16 S. Washington Batavia, IL 60510
All Makes - Industrial & Commercial
And all obsolete Pump Repair
Mobile crane rental (5 ton)
(312) 879-7747; 879-7742; 879-7772



OTTERBINE[®]

Spray Sculpture[™] Floating Fountains. Now you can clean up ponds and lakes naturally.

These self-contained water quality improvement systems help you keep unsightly algal growth and objectionable odors under control naturally, without costly chemicals.

And their sparkling spray displays may dramatically change the natural beauty of your ponds and lakes.

Otterbine[®] 576 North St., Emmaus, PA 18049

For free information
contact this Otterbine[®] dealer:

**Chicago
TORO**
Turf-Irrigation Inc.

911 Hilltop Drive
Itasca, Illinois 60143
(312) 773-5555

TORO[®] Back Pack Blower The Professional for air power.



The Professionals



Light, yet powerful, the back pack blower will whisk away the biggest jobs. It's only 22-1/2 pounds, so it's easy on the back yet delivers plenty of air velocity. And with its larger fuel capacity, this 40 cc blower will keep you on the job longer without refueling. Great for cleaning stadiums and bleachers, removal of leaves and other debris from sidewalks, driveways and parking lots.

Also, available is the Toro 21cc Hand Held Blower. It's just great for cleaning sidewalks, driveways, and patios, too. It rounds-up light debris with its adjustable air stream. And it clears hard-to-reach areas blowing dust and fine particles off objects without a scratch or scrape.

Call Chicago Toro today.

**Chicago
TORO**
Turf-Irrigation Inc.

911 Hilltop Drive
Itasca, Illinois 60143
(312) 773-5555

GOLF COURSE IRRIGATION SPOKEN HERE!

We talk your language:

- Specialized trouble-shooting equipment.
- Technical information.
- Pumping systems experts.
- All your needs!

Talk to us.

Master Distributor

RAIN BIRD®

CenturyRain Aid

341 Lively Blvd.
Elk Grove Village, IL 60007
312/640-6660

31691 Dequindre
Madison Heights, MI 48071
313/588-2990

Washed sand usually contains less than 1% silt and clay. A simple test to determine the amount of silt and clay in a sand sample: dilute a 5" column of fresh sand with two parts of water, shake vigorously, let settle for 24 hours. The amount of silt and clay present will form a surface crust which should be barely discernable. Pit or unwashed sands vary a great deal, but may be suitable for use as a rootzone medium.

Availability. Check all sand sources before choosing the best uniform sand available at reasonable cost. Large sand companies are equipped to prepare in one day all the sand needed for the turf areas in a metropolitan district for one year. Turf managers are encouraged to work together to create bulk orders so as to obtain a preferred supply.

Plans for a sand topdressing program should provide adequate machinery for efficient use. The repeated procedure should be an efficient operation. The sand storage area should provide for an ample, dry supply. It should be arranged for easy dumping by truck when delivered and machine handling for spreading.

We at Purdue are encouraged by the availability of quality sands. Since 1972 we have records of 170 samples. Turf managers desiring to get an analysis of a sand may send one pint or one pound of sand for each sample to be tested. Ship to:

Dr. W. H. Daniel, Turf Research
Department of Agronomy
Purdue University
West Lafayette, IN 47907

"Oh, please don't trouble yourself," said the departing guest to the weary host. "I can see myself to the door all right."

"It's no trouble," said the host. "In fact, it's a pleasure."

The best in turf supplies -
LESCO 100% Sulfur-Coated Fertilizers,
golf course accessories, chemicals including

LESCOSAN

A highly effective pre-emergence
(800) crabgrass and poa annua control (800)
321-5325 362-7413
NATIONWIDE Available from: IN OHIO

Dave Zimmerman
LAKESHORE EQUIPMENT & SUPPLY CO.
"Home of LESCO Products"
300 South Abbe, Elyria, OH 44035

FOR THE FINEST IN SOD

THORNTON'S TURF NURSERY

312 - 742-5030
Rt. 2 Box 72 Elgin, Ill.

NATIONAL CHEMSEARCH CORP.

222 South Central Ave.
St. Louis, Missouri 63105



par ex

PROFESSIONAL PRODUCTS

IBDU® (31-0-0) and PAR EX® fertilizers with IBDU are custom formulated for high maintenance, high quality turfgrass. Check with your local PAR EX territory manager or distributor for other available grades.

Turf Products Ltd.
West Chicago, IL 312/668-5537

Paarlberg Chemicals Co.
South Holland, IL 312/474-3086

Olsen Distributing Co.
Barrington, IL 312/381-9333

Professional Turf Specialists
Normal, IL 309/454-2467

Tri State Toro Co.
Davenport, IA 319/326-4416

Ken Quandt Territory Manager
Buffalo Grove, IL 312/541-8492

Timber Creek

Farms and Nurseries



GROWING A GENERAL LINE OF
NURSERY STOCK

Catalog upon Request
12608 Charles Road - Woodstock, IL 60098

1-(815) 338-0200

YOUR DESIGN OUR DESIGN OUR DESIGN OUR DESIGN

Our design is to fit into your design.

Our design consists of

- Budget Estimates
- Excellent Inventory
- Proper Pricing
- Expert Advice
- Pleasant Service
- Prompt Delivery

We have the ability to fit into your design — and can ship your irrigation system within days — from footvalve to fittings through the pump, pipe, controllers and heads. Whether you are replacing, remodeling or going from scratch call (312) 629-8119 or 629-8100 now and let our design work into your design.

Builders Plumbing Supply Co.
Irrigation Division
133 South Route 53
Addison, Illinois 60101



2 N 255 County Farm Rd.

West Chicago, Ill. 60185

Phone 668-5537

ROSEMAN

2620 CRAWFORD AVE. 864-1842
EVANSTON, ILLINOIS

TURF EQUIPMENT HEADQUARTERS

ROSEMAN GANG MOWERS	FORD TRACTORS
TILLER RAKES	DEDOES AERIFIER
LELY SPREADERS	LOADERS
SEEDERS	LEAF MULCHERS
ROTO TILLERS	ROTARY MOWERS
HOMELITE CHAIN SAWS	HOMELITE PUMPS

SALES ● SERVICE ● PARTS ● RENTALS

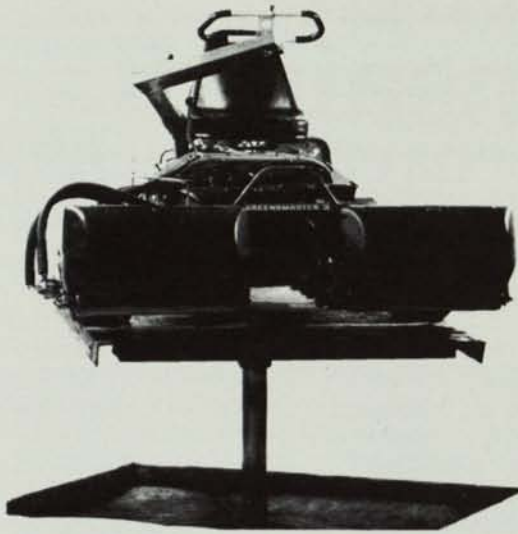
Dear Mr. Meyer:

I received my membership certificate as an honorary member in your association, and I greatly appreciate your bestowing that status upon me. Your kindness and thoughtfulness is greatly appreciated, and I look forward to continuing to cooperate with the members of the Midwest Association of Golf Course Superintendents in your goals and ambitions of providing the finest turfgrass quality and playing conditions for the players in this part of the country.

Carl H. Schwartzkopf
North Central Director
United States Golf Association

A speaker beginning his talk at a club meeting advised, "My job, as I understand it, is to talk to you. Yours, as I understand it, is to listen. If you finish before I do, just hold up your hand."

HYDRAULIC LIFT TABLE



**Comfortable height - lubrication
Adjustments - visual inspection**

**Hanson Manufacturing Company, Inc.
152 Rosedale, Crystal Lake, IL 60014
815-459-1672**

SULFUR - THE FORGOTTEN TURF NUTRIENT

Sulfur is essential to the healthy growth of turf as well as all plants. Here are some of sulfur's benefits to turf.

1. Improves water penetration in soil.
2. Increases availability of iron, manganese, copper, zinc, and boron to the plant.
3. Improves soil structure.
4. Enhances color.
5. Builds healthy protoplasm and plant tissue to help resist drought.
6. Promotes turf growth and density.
7. Aids the turf response when used in combination with nitrogen.
8. Helps keep alkalinity in balance.
9. Aids nitrogen release from organic matter.
10. Improves recuperation capacity.

EDITORIAL NOTE

In case you find any mistakes in this magazine, please remember they were put there for a purpose. We try to offer something for everyone. Some people are always looking for mistakes.

ASPHALT DRIVEWAYS — PARKING LOTS — ETC.
"Golf Course Work a Specialty"

LEMONT PAVING CO.

SAND & STONE

115th & Archer Ave (Rt 171) - Lemont, Illinois

RAY MURPHY

257-6701

Naperville Industrial Sales

355-2458

923 N. Sleight St.

Naperville, Ill.

Pickup
& Deliver

We Service what we sell

RYAN
Ryan Lawn-Care System
c 1980 Outboard Marine corp.
18-21 inch
Push & Self-Propelled
Lawn mowers

THE ALL NEW

Runner

ELECTRIC GOLF CAR
BY NORDCO

CUSHMAN
Parts & Service

GENUINE KOHLER PARTS

The Green Machine®

COMMERCIAL TRIMMERS

STRING TRIMMERS

ELECTRIC TRIMMERS

FLUID PUMP

POWER BLOWER

ORIGINAL
BRIGGS & STRATTON
SERVICE PARTS

NORDCO ELECTRIC VEHICLES

**POWER
LAWN
PRODUCTS**