

THE BULL SHEET, official publication of the MIDWEST ASSOCIATION OF GOLF COURSE SUPERINTENDENTS.

Editor — Ray Gerber
865 Hillside Avenue
Glen Ellyn, Illinois 60137
Phone — [312] 469-6467

Associate Editor — Robert Williams
90 East Franklin, Apt. 208
Lake Forest, Illinois 60045

Bull Sheet printed by Ever-Redi Printing, La Grange, Illinois 60525. Phone: (312) 352-4378.



Ed Fischer, Midwest Pres., Butler National G.C.

PRESIDENT'S MESSAGE

The 27th annual Midwest Turf Clinic has just concluded, and I feel that we have been treated to a great educational experience. Len Berg, John Berarducci, and Don Hoffman did an exceptional job in putting together the program. Our National Education Director should get some ideas from these gentlemen. We heard from some old friends from our own Chicago area and other parts of the country, plus some young superintendents that we have not heard from before.

The testimonial dinner held for Bob Williams was the highlight of the two days. Bob has done so much for the Superintendents through the G.C.S.A.A., the M.G.C.S.A., and by training young people for a career in turf management. Bob had to be very honored to have his former students show their gratitude to him with a great dinner. I would like to personally wish Bob the best in his retirement, and look forward to his fellowship whenever he is in the area.

In Bob Williams keynote address he made the point that we, the superintendents, should not forget our families. I know that we sometimes forget that our families sit at home seven months a year trying to figure out when they next would see their husbands and/or fathers. When would he once again be able to sit down and eat a meal with everyone sitting down at the same time? I know sometimes my son and daughter ask who the stranger is that came in for a sandwich, and then left? It takes a very special woman to put up with all the different schedules we ask them to, early in the mornings, and sometimes late at night. They also listen to all our problems whether it be disease, weather or the misunderstanding member. To all wives and children thanks for putting up with us. Hopefully we can make up for it just a little bit this winter.

Ladies, a few years ago we had some wives that wrote some nice articles for the **Bull Sheet**. It would be nice if we could again get some articles from you ladies. I know Ray would appreciate anything that you could send him.

I would like to wish all of you a Very Merry Christmas and a Happy New Year. I hope that the New Year grants all of you good Health and much Happiness!

Ed Fischer

To accuse others for your own misfortune is a sign of lack of education; to accuse yourself shows that your education has begun; to accuse neither others nor yourself shows that your education is complete.

Epictetus

MAGCS BOARD OF DIRECTORS FOR 1980

OFFICERS

President — Edward Fischer, CGCS
First Vice President — Len Berg, CGCS
Second Vice President — John Berarducci
Secretary-Treasurer — David Meyer

DIRECTORS

Phillip Bersin, CGCS	Don Hoffman, CGCS
Bruce Bruchfield	Thomas Vieweg
Peter Leuzinger	Robert Breen
Executive Secretary — Dorothy Warren	

The following is a list of office telephone numbers for the entire Board.

Robert Breen, Emeritus	653-5800
Edward Fischer, CGCS	887-8374
John Berarducci	835-4296
Phillip Bersin, CGCS	964-6690
Don Hoffman, CGCS	246-0281
Len Berg, CGCS	985-8366
Peter Leuzinger	584-3403
David Meyer	529-4303
Thomas Vieweg	639-2545
Dorothy Warren	974-1121
Bruce Bruchfield	438-2603

GCSAA TOUR TOURNAMENT BOUND FOR GUADALAJARA

Five days of Mexican sunshine await participants in the Golf Course Superintendents Association of America's annual postconference tour and tournament excursion to Guadalajara, Mexico Feb. 22-27, 1980.

The tour and tournament group, which will leave St. Louis for Guadalajara immediately after the close of GCSAA's 51st International Turfgrass Conference and Show Friday, Feb. 22, will tour the area around Guadalajara, and approximately 200 are expected to participate in the tournament, Conrad L. Scheetz, CAE, GCSAA executive director announced.

The golf tournament, traditionally scheduled before the turfgrass conference and show, has been combined with the annual postconference tour this year to allow more people to participate in both activities, Scheetz said.

Tour and tournament headquarters in Guadalajara will be the Guadalajara Sheraton, and more rooms for participants have been reserved in the Hotel Aranzazu. The Sheraton also will serve as a starting point for optional tours of the city and surrounding area scheduled for Saturday through Tuesday.

Scheduled tours include a tour of the city and the main colonial buildings and a visit to the village of San Pedro Tlaquepaque; a tour of Guadalajara, the village of Zapopan and the Institute of Arts and Crafts of the State of Jalisco; a visit to the villages of Chapala, Ajijic, Chulavista, San Juan Cosala and Jocotepec, as well as the largest lake in Mexico, and a night tour of Guadalajara, including a Mexican fiesta, mariachis, dining and dancing.

The tournament will be a 36-hole shotgun start competition open to GCSAA members, their club officials and guests and exhibitors in the St. Louis turfgrass show. The men's tournament will be played at the Club de Golf, Santa Anita Country Club and at San Isidro Country Club. The ladies' tournament will be played at Guadalajara Country Club.

A victory banquet for tournament players and those tour participants who wish to join them is scheduled for Tuesday evening, Feb. 26.

GCSAA

A husband is a man who thinks he bosses the house — when in reality he only houses the boss.

ROSEMAN

2620 CRAWFORD AVE. 864-1842
EVANSTON, ILLINOIS

TURF EQUIPMENT HEADQUARTERS

ROSEMAN GANG MOWERS	FORD TRACTORS
TILLER RAKES	DEDOES AERIFIER
LELY SPREADERS	LOADERS
SEEDERS	LEAF MULCHERS
ROTO TILLERS	ROTARY MOWERS
HOMELITE CHAIN SAWS	HOMELITE PUMPS

SALES ● SERVICE ● PARTS ● RENTALS

PENNCROSS & TORONTO C-15 BENT SOD

and

TORONTO C-15

BENT STOLONS



- Pure to Strain
- Maintained at 1/4" mowing height with "Greens King"
- Grown on Sandy Loam Soil
- Toronto C-15 Strain resistant to leafspot

ALSO FEATURING

- XL-100 Bluegrass Blend Sod

"For the Superintendent who wants the best"

XL-100 is a blend of five bluegrass varieties that were ranked superior in tests conducted at major Midwest Universities.

XL-100 is disease resistant, shade tolerant (60%) and adaptable to close mowing.



H & E Sod Nursery, Inc.

3900 West 167th Street
Markham, Illinois 60426

312/596-7200

C. E. DAUGHERTY CO.

1855 W. Stuart Ln.

Palatine, Illinois 60067

(312) 359-0602

Representing:

MITTS & MERRILL — Brush and Limb Chipper

AQUASHADE INC. — Pond Beautifier

COURSIGNS INC. — Golf Course Signs -
Trap Rakes - Litter
Receptacles

CARRON NET CO. INC. — Tennis Nets -
Wind Screens
- Dividers -
Straps &
Tapes

POLLARD BROS. — Work Benches -
Cabinets, Barrell
Stands

LOFT-KELLOGG — Grass Seeds

GRASS-CEL — Paving Blocks

EDITORIAL

An old dear friend of mine is very sick. His name is **Walter Pieper**. His friends call him Wally. Some of you older superintendents have known Wally longer than I have. But, I think not many of the younger guys ... except for Dudley, Bruce, Ted, and brother Peter ... ever really got to know this wonderful, quiet man who ran Flossmoor C.C. for almost fifty years before major surgery and continuing illness forced his retirement from the greenkeeping profession and his beloved Flossmoor C.C.

Walter Pieper was born on March 31, 1911 in Matteson, IL and has lived there all his life with his wife Marcia. He began his career at Olympia Fields C.C. (when it had 4 courses) under the legendary superintendent Fred Kreuger. From there he went on to help build Willow Springs Golf Course and then worked with his father, Harry Pieper, who was superintendent at Cherry Hills C.C., and where his son Dale, is now head superintendent. In 1927 Walter started at Flossmoor C.C. under Fred Nuessle and worked there for 49 years.

I met Wally about twenty-four years ago when I got my first job as head supt. at Calumet C.C. I was a young whippersnapper, and back in those days I knew everything there was to know about growing grass. During July and August, when Mother Nature showed me otherwise, I had an emergency "hot line" to Wally's office. He was always there to hear my problems and always available to come over to help me solve them with his sage advice and friendship. Even now I feel his strong hand on my shoulder telling me everything will be alright and then advising me gently what I could do to remedy the condition of my declining turf. I don't know of any teacher who had more patience than Wally.

Wally's golf course was always in superb condition and I must tell you about my first visit to Flossmoor, just a few miles away from my club, during the hot stress month of late July. I couldn't believe what I saw. It was like I was transported into another country ... a paradise, where everything was beautiful, green, and serene. And I felt that way, Wally, everytime I went to your magnificently groomed course. Once in a Matteson bar I almost believed Dudley Smith when he told me: "Wally has a magic wand". But we all knew it was your hard work, your remarkable turf knowledge, and your great dedication that made Flossmoor the outstanding course in the area. You never wrote articles, or books, or made proclamations at our meetings. You never made speeches or told people how to vote, or what our faults were. You just grew grass better than anybody I have ever met, and tried to teach a couple of Canadian prairie boys how to work with nature, with our fellow human beings, and with the people we work for. For that, my dear old friend, you will always have our gratitude. Thank You Wally.

Paul N. Voykin

FOR THE FINEST IN SOD
THORNTON'S TURF NURSERY

312 - 742-5030

Rt. 2 Box 72

Elgin, Ill.

FOR SALE

1½ year old Minnesota Wanner Sprayer B30 pump, 35 G.P.M. - up to 800 lbs. pressure, \$4,200.00.
One 18 H.P. 2 cylinder Onan engine, electric starter, 200 gal. poly tank, skid mounted. 100 ft. ¾" hose, Hanny Electric Reel, Spraying System Spray boom. Deep Root Feeder. Contact Tom Ruzich, T.J.R. Tree Care, phone 312 - 449-7377.

Sometimes a solution to a problem that has seemed almost impossible to solve appears almost by magic after you put it out of your mind for a month or so. A kind of "not being able to see the forest for the trees". It was sometime after the annual meeting and I was recalling all that had happened when it occurred to me that of the 42 present, 13 were either on the Board or running for it, 15 were interested members and 14 were past presidents of the Association. The 14 past presidents represented 70% of Association presidents for the last 20 years. It followed then that if we had an election every 6 months, there would be a tremendous increase in the attendance at our monthly meetings. Better yet, let's have an election every month and in 15 years we will have a total of 180 past presidents and should have at least 125 at every meeting. Simple enough!!

I can think of about 4 legitimate reasons for missing a meeting:

1. It is Yom Kipper and you are required to attend services at your Synagogue.
 2. You are a member of the town council and there is a meeting at the time of the M.A.G.C.S.
 3. Your son or daughter is starring in the school play on the evening of the meeting.
 4. You have just been married and your bride insists you accompany her on her honeymoon.
 5. You had to sit up all night with a sick pump.
- God, country, family and job. Who can find fault with these excuses?

Excuses that are not acceptable are:

1. The meeting was on the other side of town.
2. It fell on my bowling night.
3. I didn't have any one to ride with me.

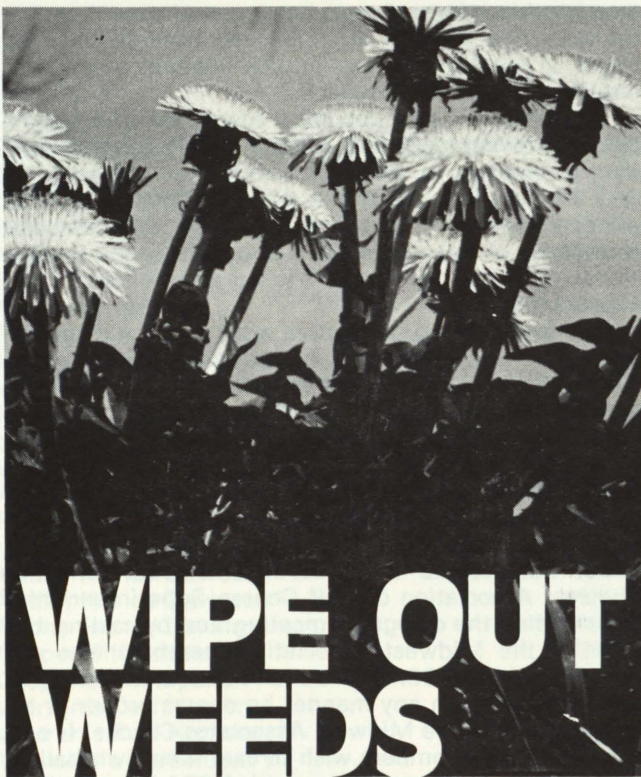
And the grand daddy of them all -- I must have heard at least a hundred times in the last five years -- "I don't like the way the Association is doing things and I don't want any part of it."

Alright, let's assume for a moment that is correct, but let's make it a green that's sick and starting to deteriorate. I am sure that the first thing you would do every morning, and the last thing you would do before leaving in the evening would be to check on that green. Your mind would be occupied with diagnosing the problem, considering the alternatives for correcting the problem and then implement a plan to get the green back in shape.

Why should it be different with your Association? The people who run it are human and as such may see things differently than you do, but you can rest assured that their goals are the same as yours. The best way to have things done your way is to get involved and at least have a voice in the way things are done. If you were in attendance at the annual meeting you would have seen what one person can do when Walter Fuchs Sr., overcame his inherent shyness and softly spoke against the Amendment that would have changed the name of the Association.

So get off your "deceased donkey" and get to the meetings. Every game of golf will not be played at Medinah #3. Every meal will not be a feast fit for the gods and everyone you encounter will not be your first choice for a brother-in-law, but you will meet some people who are very much involved in the same problems as you are and are very willing to share their experiences with you.

Robert Breen



WIPE OUT WEEDS

with Banvel[®] 4S & Banvel[®]+2, 4D

HERBICIDES

The broadleaf weed 'specialists' designed for professional turf programs.

Here's why BANVEL[®] herbicides are the professionals' choice for weed control:

- Used as directed Banvel will not harm trees, ornamentals or turf—it just eliminates weeds.
- No season restrictions. Lay down Banvel from early spring to late fall—all through the growing season.
- Rain will not affect Banvel. It keeps on working because it translocates—penetrates leaves and is absorbed through roots to attack every part of the weed.
- No special spraying equipment necessary. It is easy to clean out of equipment after use.
- Mixes readily with hard or soft water.
- Easily stored through winter months without losing potency.

Banvel herbicides—products for professional turf men



Velsicol

VELSICOL CHEMICAL CORPORATION
341 East Ohio Street
Chicago, Illinois 60611

©Velsicol Chemical Corporation, 1976

ARTHUR CLESEN INC.

Cleary Turf Chemicals

Country Club & Vertagreen
Fertilizers
Turfgrass Seed

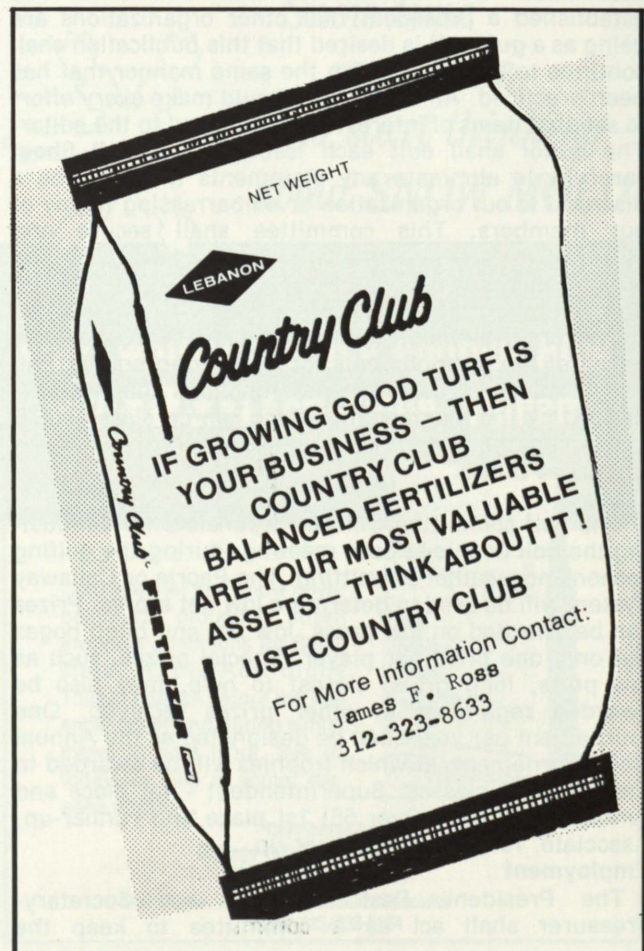
Soil Conditioners — Bark — Mulches

"Easy Markers" & Paints

Wheeling, Illinois

(312) 537-2177

SUPPORT YOUR ADVERTISERS



MIDWEST ASSOCIATION OF GOLF COURSE SUPTS. GENERAL OUTLINE OF COMMITTEES AND STANDARD OPERATING PROCEDURES

Arrangements

The arrangements committee will be responsible for making all necessary arrangements in connection with our regular monthly meetings of the membership, except the sending of notices. Items to be given special consideration are; location, facilities, food, prices, seating, public address system and any additional items that the committee deems important for the presentation of our meeting. We will respect the right of any club to limit golfers and/or dinner guests. Such limitation will be governed by the arrangements committee with approval of the Executive Board, except that attendance may not be limited (except for guests) at the Annual meeting or the Annual Golf Tournament.

Education and Research

This committee shall be responsible for the presentation of educational programs at our monthly meetings and shall present the Annual Turf Clinic. It shall organize the results of on the job research practiced by our members at their respective clubs. (Each year individual members who test new materials and new methods should report results to the committee. The results of these tests should be available to our membership.) It shall be the responsibility of the committee to pursue the fulfillment of our desire to have an organized turf research program conducted in the Chicago area and to seek support for that program.

Publication and Publicity

This committee shall be responsible for the publication of a periodic bulletin reporting the activities of our association and its members. Our **Bull Sheet** has established a precedent that other organizations are using as a guide. It is desired that this publication shall continue to be published in the same manner that has been practiced. **All members**, should make every effort to see that items of interest are forwarded to the editor. The editor shall edit each issue of the **Bull Sheet** carefully to eliminate any statements that may be a discredit to our organization or embarrassing to any of our members. This committee shall secure and dispense all beneficial publicity for our profession and our members.

Entertainment

The entertainment committee shall be responsible for all of the arrangements for our Spring and/or Fall dinner dance or other similar functions that may be desired by the membership which can be classified as entertainment and which has been approved by the Executive Board.

Golf

The golf committee will be responsible for conducting the golf events at each meeting, during the golfing season and weather permitting. The Peoria or Callaway System will be used to determine low net scores. Prizes can be awarded on low gross, low net and blind bogey but only one prize per player. Special prizes, such as low putts, long drive, closest to hole, may also be awarded regardless of other prizes received. One tournament per year shall be designated as the Annual Golf Tournament, at which trophies will be awarded in the following classes: Superintendent - 1st place and runner-up, Senior (Over 55) 1st place and runner-up, Associate, 1st place and runner-up.

Employment

The President, Past President and Secretary-Treasurer shall act as a committee to keep the

membership informed as to known employment opportunities. This shall be accomplished through the **Bull Sheet**, at regular meetings and by telephone contact if individual members request it.

The President may appoint a committee of Superintendents to meet with and assist a member Superintendent on matters of turf or grounds maintenance, but only when requested by the member Superintendent. All members of this committee shall maintain the confidence of fellow members and display the professionalism and ethics pursuant to our association.

Membership

The membership committee shall make known the purpose of our association, by contacting eligible non-members and advising them of our program and benefits so that they will want to join with us in the pursuit of our objectives. The committee shall also screen applicants to insure that they qualify for the class that they apply for before presenting applications to the board of directors for approval.

GCSAA Delegate

Our delegate to the GCSAA shall represent the Midwest Association of Golf Course Superintendents, by attending the delegates meeting and by casting the votes of the Midwest Association members who are members of the GCSAA. He shall have full authority to cast these votes in any manner he deems proper or by the guidance of the Midwest Associates Caucus. If any of our GCSAA members wish to cast their own ballot, they shall do so in accordance with GCSAA regulations and by notifying the Midwest delegate. A report of the proceedings shall be given to the Midwest memberships at the first opportunity following the GCSAA meeting.

Advisory Committee

The members of this committee shall attend the advisory committee meeting at the GCSAA Turf Conference and Show. They shall reflect the attitude of our Midwest Association in an effort to guide the operational program of the GCSAA. The Midwest membership shall be advised of the proceedings of the advisory committee meeting.

General Operating Procedures

Executive Committee members and any members serving on MAGCS Committees shall appear on the GCSAA voting roster as casting votes as a MAGCS Member. Any member not voting with the MAGCS on a national level may attend the MAGCS Caucus but may not take part in the deliberations of said caucus.

Ed Smith, Golf Course Supt.

The final program for the 1980 Mid-America Trade Show has been announced by Frank C. Zenzola (Charles Fiore Nurseries, Prairie View, IL), President of the event. The Mid-Am is the Midwest's largest and most comprehensive horticultural exposition. It is sponsored by the Illinois State Nurserymen's Association, the Illinois Landscape Contractor's Association, and the Wisconsin Landscape Federation. The Mid-America Trade Show will be held at the O'Hare Exposition Center, January 20-23, 1980 in the Chicago suburb of Rosemont, Illinois.

The show hours for Mid-Am/80 are as follows:

Sunday, January 20	1:00 p.m. - 6:00 p.m.
Monday, January 21	9:00 a.m. - 5:00 p.m.
Tuesday, January 22	9:00 a.m. - 5:00 p.m.
Wednesday, January 23	9:00 a.m. - Noon

Complete details on attending or exhibiting at the 1980 Mid-America Trade Show are available from the show headquarters at 4300-L Lincoln Avenue, Rolling Meadows, IL 60008. Phone 312-359-8160.

M.A.G.C.S. DINNER & DANCE REPORT

Contributor

Chicago Toro
George A. Davis Inc.
Turf Products
Carriage Greens C.C.
Scotts Protery
Nelsicol Chem. Corp.
Scotts Protery
Vaughans Seed Co.
Du Pont
Ill. Lawn Equipment Inc.
Vaughans Seed Co.
Hanson Manufacturing Co.
Loft Kellogg
Lebanon Chemical Corp.
Arthur Clesen Inc.
Roseman Tractor Equip. Co.
Vaughans Seed Co.
Nadler Harley Davidson
Nadler Harley Davidson
Nadler Harley Davidson
Cooper Oil Company
Cooper Oil Company
Warren's Turf Nursery
Warren's Turf Nursery
Thornlon's Turf Nursery
Thornlon's Turf Nursery
Layne-Western Co. Inc.
Layne-Western Co. Inc.
Henry Frenzer Inc.
Henry Frenzer Inc.
Henry Frenzer Inc.

Prize


Toro Snow Thrower
Weedeater
La Machine
2 Dozen Golf Balls
Smoke Alarm
\$50.00 Turf Chemical
Smoke Alarm
3 lbs. Blue Grass Seed
Electronic Calculator
Bulova Wall Clock
3 lbs. Blue Grass Seed
Wine/Wicker Basket
Bird Feeder
Fire Detector
Crocker Fry Pan
Crockery Cooker
3 lbs. Blue Grass Seed
\$50.00 Gift Certificate
\$25.00 Gift Certificate
\$25.00 Gift Certificate
Electric Grill
5 piece Bake Set
Hot Pot
Corning Ware
Hamburger Grill
20 cup Perculator
Patio Server
Donut Maker
Digital Clock
Timex Watch
50 piece Silver Set

Winner

Ed Stewart
Marvin Gruening
Richard Kensing
Walter Fuchs
Roger Stewart
Phil Bersin
Louis Dotz
Leonard Berg
Harold Fredrickson
Ed Fischer
Jim Reed
M. Lockwood
Richard Johnson
David Meyer
David Lenox
Gordon Keely
Jack Hanson
Don Hoffman
Anthony Meyer
Dudley Smith
Steve Stewart
Lee Overpeck
Jack Freud
James Halloran
Ray Schei
John Lebedevs
Nick Thand
L. Leis
R. Breen
D. Kessinger
Keith Fuchs

Phil Bersin, Chairman

It's Playable





Rated First for:

**QUALITY
DENSITY
WEAR TOLERANCE
SHADE TOLERANCE**

Used straight or mixed with other elite bluegrasses, your turf problems are all but solved. Highly disease and drought resistant and it can be mowed down to 1/2 inch...ideal from the tee to the green.

BENTGRASS SOD OR STOLONS
Penncross - Cohansey C-7 - Toronto C-15

Available as Sod, Sod Blend, Sod Plugs and Seed.

Warren's TURF NURSERY, INC.
8400 West 111th. Street
Palos Hill, IL 60465 - Phone: 312/974-3000



*Snow time
is no time
to start thinking
about SNOW MOLD*

**start winter disease control NOW
with TUCO Acti-dione® Thiram**

Cold weather and snow cover before the ground is frozen are ideal conditions for Snow Mold. Apply Acti-dione Thiram late fall before the first snow cover and during winter thaws to fight fungi. See us today for help in winter disease control.



Distributed by
**Chicago Toro Turf Irrigation Inc.
TURF PRODUCTS LTD.**

Don Maske, Agri-Chemical Sales Specialist
Phone: 815/838-8164

Schroeder's Nursery, Inc.



TREES - EVERGREENS - SHRUBS

Specializing in large Caliper shade trees and Ornamentals.
We also offer complete installation service.

TELEPHONE: (312) 546-9444

Arthur E. Schroeder
Richard A. Schroeder
Don Virgens

**GRAYSLAKE, ILL.
Rt. 1 - Box 34-W**

Nursery on Rt. 60 between Rtes. 12 (Volo) and 83 (Ivanhoe)

Nels J. Johnson, Tree Experts, Inc.

SINCE 1930

Nels J. Johnson, Sr.

Nels J. Johnson, Jr. - Karl G. Johnson
Complete, economical tree service for Private Estates,
Parks, Municipalities, Golf Courses, Cemeteries,
Schools, Industrial Areas.

All phases of Arboriculture, Diagnosing, Pruning, Treating,
Transplanting, Fertilization, Hydraulic and Mist Spraying,
Removals, Stump Routing, Municipal Forestry, Chemotherapy
for elms, and other trees.

• **FULLY INSURED** •

Graduate -- Licensed Arborists

MAIN OFFICE - 912 Pitner Avenue, Evanston, Illinois 60202

Phones: GRGreenleaf 5-1877 - GR 5-5255

Hinsdale, Illinois - FA 5-0970

GOLF COURSE IRRIGATION SALES CO.

Div. of Halloran & Yauch, Inc.
2040 Lehigh Ave., Glenview, Ill. 60025

Distributors of:

"AQUA DIAL" - Sprinklers & Valves

"MOODY" - Sprinklers, Valves & Controllers

**CUSTOM PUMP HOUSE CONSTRUCTION
AND REMODELING!**

IRRIGATION INSTALLATION & REMODELING!

GOLF COURSE DRAINAGE SYSTEMS!

Call Us For Your Golf
Course Irrigation Needs!

312-729-1625



2 N 255 County Farm Rd.

West Chicago, Ill. 60185

Phone 668-5537

BOJO TURF SUPPLY CO.

Don't jerk
around, do
you surren-
der or don't
you?

Buy



Call:
258-3485





Vertagreen

A product for all reasons



- Balan offers pre-emergence control of Poa Annua, crabgrass, goose grass, water grass and foxtail.
- Uniform particles flow smoothly, spread evenly.
- One-fourth the nitrogen is Urea-Formaldehyde
- Contains secondary and micro-nutrients — S, B, Mn, and Zn.
- All potash derived from sulfate of potash.



Agri-Chemicals

Division of United States Steel

P.O. Box 1685,
Atlanta, Georgia 30301

The following pictures were taken at the M.A.G.C.S. clinic:



Bob Williams, Tom Mascaro, Sherwood Moore, Ray Gerber



Mike Bavier, GCSAA Director, Inverness C.C. - Moderator



Don Pakkala, Medinah C.C. - Host Supt.



Dudley Smith, Silver Lake C.C.



Bob Williams, Keynote Speaker



Sherwood Moore, Woodway C.C.



Dr. Roscoe Randell, University of Illinois



Tim Miles, Sportsman G.C.