

THE BULL SHEET, official publication of the MIDWEST ASSOCIATION OF GOLF COURSE SUPERINTENDENTS.

Editor — Ray Gerber
865 Hillside Avenue
Glen Ellyn, Illinois 60137
Phone — [312] 469-6467

Associate Editor — Robert Williams
90 East Franklin, Apt. 208
Lake Forest, Illinois 60045

Bull Sheet printed by Ever-Redi Printing, La Grange, Illinois 60525. Phone: (312) 352-4378.



Ed Fischer, Midwest Pres., Butler National G.C.

MAGCS BOARD OF DIRECTORS FOR 1980

OFFICERS

President — Edward Fischer, CGCS
First Vice President — Len Berg, CGCS
Second Vice President — John Berarducci
Secretary-Treasurer — David Meyer

DIRECTORS

Phillip Bersin, CGCS	Don Hoffman, CGCS
Bruce Bruchfield, CGCS	Thomas Vieweg
Peter Leuzinger	Robert Breen
Executive Secretary — Dorothy Warren	

The following is a list of office telephone numbers for the entire Board.

Robert Breen, Emeritus	653-5800
Edward Fischer, CGCS	887-8374
John Berarducci	835-4296
Phillip Bersin, CGCS	964-6690
Don Hoffman, CGCS	246-0281
Len Berg, CGCS	985-8366
Peter Leuzinger	584-3403
David Meyer	529-4303
Thomas Vieweg	639-2545
Dorothy Warren	974-1121
Bruce Bruchfield, CGCS	438-2603

PRESIDENT' MESSAGE

A new year is here, and I hope that it brings a successful year for the M.A.G.C.S. In order for the M.A.G.C.S. to be successful our membership must participate. Over the past few years our meeting attendance has gone down with no apparent reason. Our meetings are held for education and fellowship. I realize that not every meetings educational program is for every person, but the fellowship makes the meetings worth attending. If the educational session isn't what you want to hear, make it your business to let the education committee know what you are interested in so that they can find someone to speak on that subject. Most of us learn from the bull sessions before or after dinner over a few drinks.

It is like Bob Breen's editorial last month - the same people show up at every meeting. Something must keep on bringing them back. I know a lot of you say that the meetings far away take too much time, and too much gas to get there. That is not an excuse! There are fellow Superintendents to ride with you, and if you know someone who isn't a member invite him to become a member.

As members of the M.A.G.C.S., don't become apathetic. Attend meetings, and enjoy your Association along with your fellow members. I challenge all of you to attend at least six meetings this year, and become involved, participate in meetings, and enjoy yourself. I am looking forward to seeing all of you at the next meeting.

Ed Fischer

M.A.G.C.S. March 10 meeting - at Nordic C.C. Bowling, Racquet Ball, Health Club are all available for your enjoyment. Where else could you get a better deal.

"Dad, guess what! I've got my first part in a play," enthused the budding young actor. "I play the part of a man who's been married for twenty-five years."

"That's a good start, son," replied his dad. "Just keep at it and one of these days you'll get a speaking part."



MIKE BAVIER
for
VICE PRESIDENT
of
GCSAA

**A Class Guy with a
determined vision for
our GCSAA Future**

**Look at the way he ran the golf tournaments at Sea Island
and Corpus Christi.**

**Look at the way he coordinated the Educational Conference
last year in Atlanta.**

**Look at the way he gets along with the GCSAA member-
ship, his fellow Board members, and the staff at
Lawrence, Kansas.**

Look at the record.

- **SINCERITY**
 - **STABILITY**
 - **SERVICE**



EDITORIAL INFLATION

It is a word we have been living with all our lives and are going to have to live with and tolerate for many years to come. There is much literature written about this subject. In these writings one will find many biased ways in which inflation is explained and who or what is to blame. I have studied and read many of these articles and in my own and "unbiased" opinion will explain inflation and place the blame where it belongs.

At any given point in time there are a certain number of goods available to the general marketplace. This number of goods is constantly changing. But the parameter is there. At this time (the second I started this sentence), there are "x" number of automobiles, "y" number of ranch style homes, "z" tons of fertilizer, etc. available for consumption in the marketplace.

At that very second that we had those "x, y, z, etc." numbers of goods available, there were also a certain number of units of money available to purchase those goods. In this country there are "x" number of federal reserve notes in circulation used to purchase this countless number of goods.

If we go back to that second referred to as our given point in time when there were so many goods available to be purchased with so many dollars, we must assume that all spendable dollars are used to purchase all needed goods. If there are more federal reserve notes printed with that same number of goods available for purchase, then the price of each good will go up do to the increase in the number of dollars printed.

The prices go up because the number of dollars available for spending increases while the number of goods available remains the same. If those dollars were not printed, then they could not be spent and prices would not go up.

Granted this is very, very oversimplified. But after all economic constraints such as balance of payments, gold backing, labor unions, oil import quotas, stock market volatility, interest rates, world unrest and who knows how many others, are considered, the basic problem of inflation is the government's printing paperbacks not supported by real economic strength. Politically it is easier for an administration to prime up the printing presses and print the greenbacks instead of stabilizing the economy through sound economic policies.

Tom Vieweg, Supt.
Cary Country Club

FOR THE FINEST IN SOD
THORNTON'S TURF NURSERY

312 - 742-5030

Rt. 2 Box 72

Elgin, Ill.

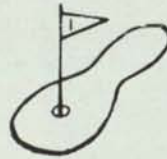
A speaker beginning his talk at a club meeting advised, "My job, as I understand it, is to talk to you. Yours, as I understand it, is to listen. If you finish before I do, just hold up your hand."

PENNCROSS & TORONTO C-15 BENT SOD

and

TORONTO C-15

BENT STOLONS



- Pure to Strain
- Maintained at 1/4" mowing height with "Greens King"
- Grown on Sandy Loam Soil
- Toronto C-15 Strain resistant to leafspot

ALSO FEATURING

- XL-100 Bluegrass Blend Sod

"For the Superintendent who wants the best"

XL-100 is a blend of five bluegrass varieties that were ranked superior in tests conducted at major Midwest Universities.

XL-100 is disease resistant, shade tolerant (60%) and adaptable to close mowing.



H & E Sod Nursery, Inc.

3900 West 167th Street
Markham, Illinois 60426

312/596-7200

C. E. DAUGHERTY CO.

1855 W. Stuart Ln.

Palatine, Illinois 60067

(312) 359-0602

Representing:

MITTS & MERRILL — Brush and Limb
Chipper

AQUASHADE INC. — Pond Beautifier

COURSIGNS INC. — Golf Course Signs -
Trap Rakes - Litter
Receptacles

CARRON NET CO. INC. — Tennis Nets -
Wind Screens
- Dividers -
Straps &
Tapes

POLLARD BROS. — Work Benches -
Cabinets, Barrell
Stands

LOFT-KELLOGG — Grass Seeds

GRASS-CEL — Paving Blocks



WIPE OUT WEEDS

with Banvel® 4S & Banvel®+2, 4D

HERBICIDES

The broadleaf weed 'specialists' designed for professional turf programs.

Here's why BANVEL® herbicides are the professionals' choice for weed control:

- Used as directed Banvel will not harm trees, ornamentals or turf—it just eliminates weeds.
- No season restrictions. Lay down Banvel from early spring to late fall—all through the growing season.
- Rain will not affect Banvel. It keeps on working because it translocates—penetrates leaves and is absorbed through roots to attack every part of the weed.
- No special spraying equipment necessary. It is easy to clean out of equipment after use.
- Mixes readily with hard or soft water.
- Easily stored through winter months without losing potency.



Banvel herbicides—products for professional turf men

Velsicol

VELSICOL CHEMICAL CORPORATION
341 East Ohio Street
Chicago, Illinois 60611

©Velsicol Chemical Corporation, 1976

ARTHUR CLESEN INC.

Cleary Turf Chemicals

Country Club & Vertagreen
Fertilizers
Turfgrass Seed

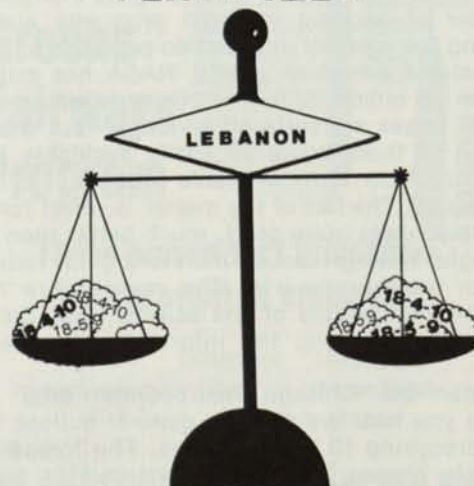
Soil Conditioners — Bark — Mulches

"Easy Markers" & Paints

611 So. Wolf Road
Wheeling, Illinois (312) 537-2177

SUPPORT YOUR ADVERTISERS

COUNTRY CLUB THE BALANCED FERTILIZER



.....a valuable asset....
in growing good turf

FOR MORE INFORMATION CALL
LEBANON CHEMICAL CORP.
P.O. Box 647 Danville, IL 61832

BE WEATHER-PROOFED NOT WEATHER BEATEN!

Join Our Satisfied Group of Clients

MESOMET I
N
C.

190 N. State Street Chicago, Illinois 60601 (312)263-5921

**For the Professional Golf Course Superintendent
NOWCAST® FORECASTING SERVICE Available Within 70 Miles of
the Chicago Loop Tailored to Your Needs:**

1. Exclusive **NOWCAST®** Teleprinter Service
2. Pin-point Forecasts for your Course or Club
3. 24 Hour Continuous Service & Radar Monitoring
4. Point Specific Temperature, Precipitation, Wind, and Evapotranspiration Forecasts
5. Severe Weather Warnings as they affect YOUR area

**Combine Your Knowledge with MESOMET'S INFORMATION for
Cost Effective Decisions:**

- ★ Scheduling Ground Crews
- ★ Watering Schedules
- ★ Fungicide Applications
- ★ For All Weather Dependent Activities

Certified Consulting Meteorologists

**Call Dr. Walt Lyons or Janis Porter
at (312) 263-5921**

WHITHER GOEST THE WEATHER?

A meteorologist is so often asked, "Why, with all your satellites, radars and computers can't you forecast the weather any better?" This very same question is being asked by meteorologists themselves in a number of ongoing research programs aimed at improving the weather information provided to various sectors of the American public. NASA has estimated that over 20 billion dollars worth of weather related economic losses are suffered annually - but that over \$5 billion of those could be easily avoidable by the application of currently available weather information and forecasts. The fact of the matter is, most forecasts today are actually quite good, much better than might be thought from a casual monitoring of radio and television weather reports. The reasons are not so much the inaccuracies of the science, but the difficulties of transmitting the information to the final user.

Consider the Chicago metropolitan area - the forecasts you hear are really a general outlook for an area approaching 10,000 sq. miles. The forecast may include the phrase "cooler near the lake" - but how much cooler and how near the lake is omitted. Frequently during the night, temperature differences of as much as 25° exists between the rural and lightly populated suburban areas and the lakeshore. Conversely, on a hot summer afternoon when a lake breeze is blowing, Grant Park could read 55° - while Joliet might be blistering at 96°. The forecast may call for a "30 percent chance of showers". This means that

30 percent of the large forecast area can expect some shower activity during the day. Nary a cloud all day at LaSalle County - but a 5 hour deluge in Northern Cook County.

A meteorologist however is often acutely aware of these local weather differences, and has the ability to forecast them. While our skill in providing long range forecasts for the upcoming season, month, or even next week is highly limited, advances in weather science over the past decade have made rapid improvements in our ability to forecast short term weather events particularly in the next 6 to 18 hours. And these are precisely the time frames in which many important economic decisions are made. Should we call in extra staff? Should we plan to irrigate tonight or count on the "50 percent chance of showers"? Had we better make an all out effort to apply fungicides? Should I rework my schedule to do much needed maintenance today, or bank on clear skies through mid-morning tomorrow? The skies look threatening now, and there's a chance of "thunderstorms" in the forecast - but do I have 2 more hours to complete this task?

The meteorologist can often answer these questions with a high degree of accuracy. The trouble is that you can't talk to that meteorologist. National Weather Service forecasters are in fact specifically prohibited from providing routine specialized forecasts to individuals, groups, corporations, etc. (unless by federal mandate for the aviation industry). Their policy is in fact to refer specialized forecast consulting to private meteorological consultants, who now play an important role in delivering meteorological products to user groups.

But both government and private meteorologists have suffered from the same communication log jam - how to tell the folks out there what's going to happen at their location. Newspapers are too slow, radio and television weathercasts too general, and a forecaster certainly can't call up a long list of individual clients for a pleasant chat about the weather - there simply isn't enough time or staff to do so.

We at MESOMET feel we have a solution to part of this problem. Our 24-hour, 7 day a week Forecast Center has by far the most sophisticated technology available needed by forecasters to gather weather information. Two radar systems can literally monitor precipitation on a mile by mile basis throughout the entire Chicago metropolitan area. Print satellite receivers map cloud patterns in great detail. A computer constantly updates thousands of pieces of meteorological information to give the forecaster the very latest data available on rapidly changing weather conditions. Even our area Lightning Detection System gives us immediate indication of severe electrical storms threatening the metropolitan area. The information is used by forecasters who are skilled in the vagaries of Chicago weather, in particular the often diverse and peculiar effect of Lake Michigan. (Our group has written over 25 technical papers on Lake Michigan weather - and we are finding out more every day). But the real breakthrough is in the new communication system - our NOWCAST™ teleprinter. The forecaster uses a powerful interactive computer message generation system to rapidly prepare forecasts for specific clients - these can include maps of expected low temperatures tonight throughout the Chicago area, a graphic map showing location of current thunderstorm activity, specific hour by hour forecasts for a given point for a given golf course, etc. The information is encoded by computer, and transmitted by radio from atop the Sears Tower from anywhere within 70 miles of the Loop. A small quiet desk top terminal with an alarm feature receives the NOWCAST™ message and prints it out instantaneously. The forecasts and alerts are addressable to any particular course, golf courses only in Will County, etc. Thus the information is received immediately, when it is needed, without reams of extraneous weather information. This results in specific alerts as to high and low temperatures, wind speed, evapotranspiration, and expectation of rain onset and ending times at a certain course.

Meteorology is not a perfect science, no more than a medical doctor would dare claim to cure any and every disease. Yet it has made significant advances. Numerous studies have shown that the use of the best available meteorological information over the long run can show substantial cost savings in various activities, particularly agriculturally oriented ones. Colorado University estimates that if a means could be found to transmit currently available short range forecast information, the savings on one crop in one state (Mississippi cotton) would total over \$150 million annually, mostly through savings from timely chemical applications.

We feel the grass could be a little greener, and at a lot lower cost, at your country club or golf course with the proper use of available weather information. We very much would like to hear your comments as to what information you feel you need and would like to obtain. Please call us here at MESOMET. Please call either Janis Porter or myself, Dr. Walt Lyons at (263-5921).

Dr. Walter A. Lyons
MESOMET, INC. and WLS-TV

It's
Playable



Rated First for:

**QUALITY
DENSITY
WEAR TOLERANCE
SHADE TOLERANCE**

Used straight or mixed with other elite bluegrasses, your turf problems are all but solved. Highly disease and drought resistant and it can be mowed down to 1/2 inch...ideal from the tee to the green.

BENTGRASS SOD OR STOLONS
Penncross · Cohansy C-7 · Toronto C-15

Available as Sod, Sod Blend, Sqd Plugs and Seed.

Warren's TURF NURSERY, INC.

8400 West 111th. Street
Palos Hill, IL 60465 · Phone: 312/974-3000

Use **TUCO**

ACTI-DIONE®

in your
Tees
Greens
Fairways
Program



**These proven turf fungicides
help prevent or eradicate**

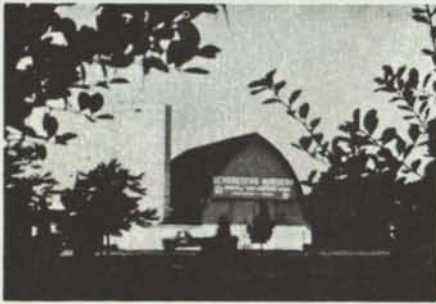
Leafspot Dollarspot Melting-out
Fading-out Rust Brown Patch
Pink Patch Powdery Mildew

**Your golf course looks better and plays
better when your turf is healthy**

Distributed by
Chicago Toro Turf Irrigation Inc.
TURF PRODUCTS LTD.

Don Maske, Agri-Chemical Sales Specialist
Phone: 815/838-8164

Schroeder's Nursery, Inc.



TREES - EVERGREENS - SHRUBS

Specializing in large Caliper shade trees and Ornaments.
We also offer complete installation service.

TELEPHONE: (312) 546-9444

Arthur E. Schroeder
Richard A. Schroeder
Don Virgens

**GRAYSLAKE, ILL.
Rt. 1 - Box 34-W**

Nursery on Rt. 60 between Rtes. 12 (Volo) and 83 (Ivanhoe)

Nels J. Johnson, Tree Experts, Inc.

SINCE 1930

Nels J. Johnson, Sr.

Nels J. Johnson, Jr. - Karl G. Johnson
Complete, economical tree service for Private Estates,
Parks, Municipalities, Golf Courses, Cemeteries,
Schools, Industrial Areas.

All phases of Arboriculture, Diagnosing, Pruning, Treating,
Transplanting, Fertilization, Hydraulic and Mist Spraying.
Removals, Stump Routing, Municipal Forestry, Chemotherapy
for elms, and other trees.

• **FULLY INSURED** •

Graduate -- Licensed Arborists

MAIN OFFICE - 912 Pitner Avenue, Evanston, Illinois 60202
Phones: Greenleaf 5-1877 - GR 5-5255
Hinsdale, Illinois - FA 5-0970

GOLF COURSE IRRIGATION SALES CO.

Div. of Halloran & Yauch, Inc.
2040 Lehigh Ave., Glenview, Ill. 60025

Distributors of:

"AQUA DIAL" - Sprinklers & Valves

"MOODY" - Sprinklers, Valves & Controllers

**CUSTOM PUMP HOUSE CONSTRUCTION
AND REMODELING!**

IRRIGATION INSTALLATION & REMODELING!

GOLF COURSE DRAINAGE SYSTEMS!

Call Us For Your Golf
Course Irrigation Needs!

312-729-1625



2 N 255 County Farm Rd.

West Chicago, Ill. 60185

Phone 688-5537

BOJO TURF SUPPLY CO.

ALL MAJOR TURF SUPPLIES

BoJo

**TURF
SUPPLY CO.**

- PAR-EX
- Vertagreen
- Du Pont
- Diamond Shamrock
- Sand Blasters
- Cyclones
- Fore Par

R R 1, Box 52
Peotone, Ill.
312-258-3485



Vertagreen

A product for all reasons



- Uniform particles. 90% minus 10 plus 20 mesh U.S. Sieve.
- Half the nitrogen is Urea-Formaldehyde.
- Uniform balance of secondary and micro-nutrients in slow-release form — Ca, Mg, S, B, Cu, Fe, Mn and Zn.
- All potash derived from sulfate of potash.
- Available in regular or polyethylene packaging.



Agri-Chemicals

Division of United States Steel

P.O. Box 1685

Atlanta, Georgia 30301

QUESTIONS

1. Name six entomological pests infesting turf?
2. What is meant by 28 pound blue grass?
3. What does the D stand for in 2,4-D?
4. What is the literal meaning of **poa annua**?
5. In 2,4-D, which solution is more volatile? The ester or the amine.
6. What is the difference between a transit and a level?
7. What is the difference between a 3:1 slope and a 3% slope?
8. What authority governs the parliamentary procedure of a meeting?
9. In the order of business in a meeting which comes first - the new or old business?
10. How do you spell - green committee, Phenyl, and practice (practise is also correct)
11. Define the word or term weed.
12. What is the difference between match and medal play in golf?
13. Is it permissible to change the cups during medal play?
14. What are the two main diseases affecting American Elms today?
15. Spell Helminthosporium.
16. Will capillary water rise faster in sand or clay?
17. Will capillary water move farther laterally in sand or clay?
18. Who was the founder of Merion bluegrass and where in the United States was it discovered?
19. Name three universities or colleges that offer two or more years in turf management?
20. Who was the first man to be awarded the USGA annual green section award?
21. What does the O.J. stand for in O. J. Noer?
22. What is meant by the pan test in irrigation?
23. What is maximum lift of a suction or centrifugal pump considered to be?
24. Generally speaking how many inches of rain would equal 10 inches of snow?
25. Where does our major source of moisture come from in our rainfall in North America?
26. Name five controls for Chickweed and whether or not they are Pre-emergence or Post-emergence.

1. Any six insects that they might answer.
2. The top quality bluegrass weights 28 lbs. per bushel (sometimes more). Anything less of quality would weigh less because it contains a lot of chaff.
3. Dichlorophenoxyacetic acid.
4. Annual bluegrass.
5. The ester solution.
6. A transit is used for angles as well as leveling, where a level is used primarily for leveling.
7. A 3:1 slope means that for every 3 feet horizontally the vertical rise is 1 foot. A 3% slope is one in which the vertical rise is only 3 feet in 100 feet horizontally.
8. Roberts Rules.
9. Old business.
10. G-R-E-N-C-O-M-M-I-T-T-E-E, P-H-E-N-Y-L, P-R-A-C-T-I-C-E (or P-R-A-C-T-I-S-E)
11. Any plant that is growing where you do not want it.
12. Match play you play an opponent by the hole and medal play you play him by the final score.
13. No.
14. Dutch elm disease and phloem necrosis.
15. H-E-L-M-I-N-T-H-O-S-P-O-R-I-U-M
16. Sand.
17. Clay.
18. Joe Valentine in Merton, Ohio.
19. Purdue, Penn State, Iowa and Amherst, Mass.
20. Dr. J. Monteth.
21. Oivan Jewels.
22. The placement of like receptacles at various places in the fall area of the sprinkler to measure the water at these specific points.
23. 15 feet.
24. One inch.
25. The Pacific Ocean.
26. Answers vary.

ANSWERS

ASPHALT DRIVEWAYS — PARKING LOTS — ETC.

"Golf Course Work a Specialty"

LEMONT PAVING CO.

SAND & STONE

115th & Archer Ave. (Rt. 171) - Lemont, Illinois

RAY MURPHY

257-6701

ROSEMAN

2620 CRAWFORD AVE. 864-1842
EVANSTON, ILLINOIS

TURF EQUIPMENT HEADQUARTERS

ROSEMAN GANG MOWERS	FORD TRACTORS
TILLER RAKES	DEDOES AERIFIER
LELY SPREADERS	LOADERS
SEEDERS	LEAF MULCHERS
ROTO TILLERS	ROTARY MOWERS
HOMELITE CHAIN SAWS	HOMELITE PUMPS

SALES ● SERVICE ● PARTS ● RENTALS

- All Major Turf Supplies
- Par-Ex
- Bean Sprayers
- DuPont
- Chipco
- Vertagreen
- Daconil - Dacthal

Quality — Value — Service

PAARLBERG CHEMICALS

1840 E. 172nd & Paxton, So. Holland, Ill.
312 - 474-3086 312 - 258-3485