

**THE BULL SHEET, official publication of the
MIDWEST ASSOCIATION OF GOLF COURSE
SUPERINTENDENTS.**

Editor — Ray Gerber
865 Hillside Ave.
Glen Ellyn, Ill. 60137
Phone — 469-6467

Associate Editor — Robert Williams
90 East Franklin, Apt. 208
Lake Forest, Ill. 60045
Office Phone — 432-0088

Bull Sheet printed by Ever-Redi Printing, La Grange,
Illinois 60525. Phone: 312-352-4378.

MAGCS BOARD OF DIRECTORS FOR 1979

OFFICERS

President — Robert Breen
First Vice President — Edward Fischer
Second Vice President — Len Berg
Secretary-Treasurer — David Meyer

DIRECTORS

Phillip Bersin	Don Hoffman
John Berarducci	Thomas Vieweg
Peter Leuzinger	Joe Grenko
Executive Secretary—Dorothy Warren	

The following is a list of office telephone numbers to
the entire Board.

Robert Breen	653-5800
Edward Fischer, CGCS	887-8374
John Berarducci	835-4286
Joe Grenko, Emeritus	634-0100
Phillip Bersin	964-6690
Don Hoffman	246-0281
Len Berg	969-8366
Peter Leuzinger	584-3403
David Meyer	529-4303
Thomas Vieweg	639-2545
Dorothy Warren	974-1121



President - Bob Breen

PRESIDENT'S MESSAGE

One of the criteria employed by sociologists to determine the degree of civilization a tribe or nation has achieved, is to examine the respect and treatment accorded the elders of that tribe or nation.

If we were to judge the M.A.G.C.S. on this basis, I am sure you will agree that there is much to be desired in this area. To the best of my knowledge the only concession extended a retired member is to exempt him from paying dues when he applies for an A.A. Status. In my opinion we owe them a little more than that.

I would like to suggest that we honor those members by having a "Senior Day" at our June Meeting and that all class A.A. members be welcomed as guests of the M.A.G.C.S. with the Association picking up the tab for golf, carts and dinner. I also believe that the Association should make every effort possible to assure that retirees attend.

It is regrettable that this has not occurred sooner, as it is too late to benefit Frank Mastroleo, Carl Petersen, Bill Stupple, and Paul Burdette who have passed away in the last six months. Frank and Carl were charter members of the Association, while Bill Stupple, a former president of the M.A.G.C.S. and Paul Burdette were the heart and soul of the **Bull Sheet** not too many years back.

We do, however, have a few "Blue Chip" Supers left, who have paid their dues in every sense of the word for many years. Outstanding gentlemen such as Amos Lapp, he has to be first as he is the one who guided me in this direction thirty some years ago, Ray Gerber, Frank Dinelli, Dom Gratti, Al Rauch, Art Benson, Walter Hoyt, Joe Canale, Roy Nelson, Barney Wendt, Peter Bild and no doubt others.

Excuse the quick change of subject, but there are other issues to be discussed in this message.

It is logical to assume that there are some who are becoming a little weary of one suggestion after another in these messages, but I believe that when a person makes the decision to run for the Board he must accept the fact that his goal must be to improve the Association and that his efforts must be directed with that in mind. If you are not willing to contribute, you should not allow your name to be placed on the ballot. The M.A.G.C.S. cannot "Stand Pat". We must strive constantly for improvement.

To end on a positive note our congratulations are offered to Ray Gerber for being the recipient of the G.C.S.A. Chapter News's Letter Award. Ray has done an outstanding job and deserves the recognition. To Phil Bersin and Don Hoffman for achieving Certification status, to Mike Bavier for his re-election to the

Board of the G.C.S.A.A. for a second term, and last but not least to Howard Baerwald, Roy Nelson, and Barney Wendt upon becoming members of Quarter Century Club of the G.C.S.A.

Dave Meyer has informed me that there are many who have not paid the annual dues, as this is the year that the Biannual Roster is printed, it is imperative to have your name listed in the Roster, that you pay before the 30th of May, as the Roster is scheduled for the printer on that date. See to it now.

Robert Breen

TREE MAINTENANCE AIDS IN PRESERVATION

Village Greens of Woodridge has been spraying trees, through surface contact and fall ground applications, for the past six years. 60% of the trees showed to be deficient in some manner or another. Some of the problems were yellowing, complete defoliation by the end of August, tree death, and minimal leaf foliage. Talking with some of the previous employees at the club, it was determined that the trees had no past care. Trees are expensive to replace and we know that they are indeed an asset to the beautification of our golf course.

The trees on our golf course are 20 years old, 8' - 10' caliber, 15' - 20' high. The varieties of trees are Maple, Ash, Linden, Hawthorne, Apple & Plum. By applying nutrients to our trees, we have been able to combat the problems.

The program that we have chosen to follow is two foliage and one ground application for the year. The foliage applications are applied the last week in May and the last week in July. The foliage spray consists of:

- 8 lbs. of Iron Sulfate
- 7 lbs. of water soluble fertilizer (10-20-30)
- 3 qts. of Microgreen
- 300 gallons of water

The ground application consists of:

- 8 lbs. of Iron Sulfate
- 3 qts. of Microgreen
- 300 gallons of water

The ground application is applied the middle of September, only to trees that are severe problems through the summer months. The only time an insecticide is applied to the trees is on as needed basis and only to the trees that are infested by a pest. We try not to apply insecticides because of the wild life in our area.

When Village Greens first started a tree care program, five applications were made in the first year. We are now down to three applications. Our goal is to make one application (foliage in May) every other year and on an as needed basis.

The trees have improved over the years. The blossoms and fruit are bigger and greater in number. The leaf structure and texture are more prominent thus increasing foliage. Our golfing public has commented on the increase of the fruit and its size. Our golfers pick the apples and plums to eat while playing golf or to use for a delicious homemade pie.

Lenny Berg
Supt. - Village Greens

Rogers' Pump Sales and Service
16 S. Washington Batavia, IL 60510
All Makes - Industrial & Commercial
And all obsolete Pump Repair
Mobile crane rental (5 ton)
(312) 879-7747; 879-7742; 879-7772

LABOR-SAVING GRASSES



GLADE KENTUCKY BLUEGRASS

- Does Great in Sun Or 60% Shade
- Excellent Disease Resistance to Powdery Mildew - Stripe Smut - Leafspot - Rust
- Quick Recovery - Fast Germinating

Adelphi

KENTUCKY BLUEGRASS

- Greens Up Earlier in Spring - Stays Green Longer In Fall
- Great Resistance To Disease

- Low Growing - Tolerates Close Mowing

CITATION

FINE LEAF PERENNIAL RYEGRASS

- Improved Mowing Qualities
- Blends Well With All Other Grasses

- Performs Great In Hot, Humid Areas

FOR MORE DETAILED INFORMATION AND TEST RESULTS WRITE TO:
VAUGHAN'S

5300 Katrine Avenue, Downers Grove, Illinois 60515, (312) 969-6300
WAREHOUSES LOCATED IN:
Bound Brook, New Jersey • Landover, Maryland • Ovid and Grand Ledge, Michigan • Spokane, Washington

ACTI-DIONE®

in your
Tees
Greens
Fairways
Program



These proven turf fungicides
help prevent or eradicate

Leafspot Dollarspot Melting-out
Fading-out Rust Brown Patch
Pink Patch Powdery Mildew

Distributed by
Chicago Toro Turf Irrigation Inc.
TURF PRODUCTS LTD.

Don Maske, Agri-Chemical Sales Specialist
Phone: 815/838-8164

EDITORIAL

The snow is melting, the floods are starting to recede, and the grass is beginning to green. Can golf be far away? Your Golf Committee hopes not, we are hoping for a great year with the first outing planned for May.

The rules will be the same as in the past, showing of your Membership card when signing up being the prerequisite to playing. Club Officials are always welcome as guests, but please call the Golf Committee or the Host Superintendent so arrangements can be made.

One thing that we are doing right now is trying to work with the CDGA on getting our Member Superintendents a CDGA Handicap. I know here at Butler I don't have a handicap and I feel many of our members would like to have one. We hope to have all the details worked out in time for the golfing season.

If anyone has any suggestions on the type of events we should have, or any other suggestions, please feel free to contact me or Pete Leuzinger. I hope that everyone has a great upcoming season.

Ed Fischer

DID YOU KNOW?

Grass seed is dormant for 3 or 4 months after harvesting. Winter's cold temperatures rearranges chemicals in the seed so it will germinate at the right time the following spring. It's nature's way for protecting the seed for perpetuation of our grasses.

Oregon grown grass seed has 7 percent more pure, live seed than those grown in any other climate.

One year's production of Oregon ryegrass planted to pasture would graze beef cattle that would produce 6 billion pounds of meat.

Grass seed will germinate much better with warm days and cool nights and when the temperature variation is from 85 degrees F. down to 55 degrees F.

More water is not necessarily a cure for brown grass. If lawn grass is ailing from disease, additional humidity may actually aggravate the sickened turf.

Because grass flowers are wind pollinated, they have no need for bright colors, fragrance or honey to attract bees or other insects.

Just a reminder that our flowable thiram, Spotrete F, is available for application on **this** season. Spotrete F is used for control of Dollar Spot, Brown Patch, Pink and Gray Snow Mold. This product is available from your local turf distributor in cases, 4 x 1 gallon and 2 x 2 1/2 gallons.

Now the golf course superintendent has the established reliability of thiram with the convenience of a liquid. This means -

- No more irritating dust from the wettable powder
- No more broken bags
- No more weighing out of pesticide
- No more spray tank dispersability problems
- No more clogged nozzles
- No solvents

Wishing you a successful 1979 season.

Barbara Cleary, Pres.
W. A. Cleary Corp.

ARTHUR CLESEN INC.

Cleary Turf Chemicals

Country Club & Vertagreen
Fertilizers
Turfgrass Seed

Soil Conditioners — Bark — Mulches

"Easy Markers" & Paints

611 So. Wolf Road
Wheeling, Illinois (312) 537-2177

ASPHALT DRIVEWAYS — PARKING LOTS — ETC

"Golf Course Work a Specialty"

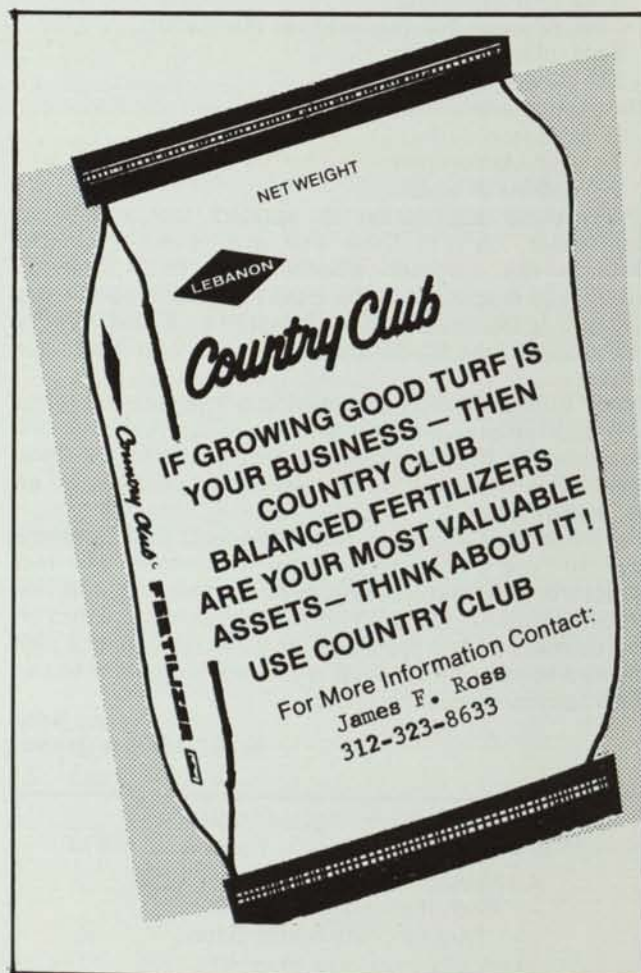
LEMONT PAVING CO.

SAND & STONE

115th & Archer Ave. (Rt. 171) - Lemont, Illinois

RAY MURPHY

257-6701



STEPHEN BROWN AND ALLAN NIELSEN RECEIVE TUCO SCHOLARSHIPS

Stephen Brown and Allan Nielsen, both seniors in Turf Management at Michigan State University, have each received a TUCO Turf Scholarship for 1979. The awards were recently presented at the 49th annual Michigan Turf Conference by Robert Yarborough, TUCO representative.

The annual scholarships are sponsored by TUCO, Division of The Upjohn Company, to assist turfgrass students in meeting their educational needs. The scholarships are awarded for scholastic ability, personal integrity, and professed career interest in turfgrass management.

Brown is the son of Mr. and Mrs. Robert Brown of Anderson, Indiana; and Nielsen is the son of Mr. and Mrs. Everett Nielsen of Luck, Wisconsin.

Editor's Note - In the last year we have had a few old and very dear friends who have passed away. I think the following wisdom excerpted from the older books can give us some comfort.

The Talmud is celebrated as a treasury of parables, fables and anecdotes of great insight and power. They are not meant to entertain, please note. They are vehicles for instruction, arresting ways of driving home a moral. I give you my favorite:

"In a harbor, two ships sailed: one setting forth on a voyage, the other coming home to port. Everyone cheered the ship going out, but the ship sailing in was scarcely noticed. To this, a wise man said: 'Do not rejoice over the ship setting out to sea, for you cannot know what terrible storms it may encounter, and what fearful dangers it may have to endure. Rejoice rather over the ship that has safely reached port and brings its passengers home in peace.'

"And this is the way of the world: When a child is born, all rejoice; when someone dies, all weep. We should do the opposite. For no one can tell what trials and travails await a newborn child; but when a mortal dies in peace, we should rejoice, for he has completed a long journey, and there is no greater boon than to leave this world with the imperishable crown of a good name."

Submitted by Paul N. Voykin

- All Major Turf Supplies
- Par-Ex
- Bean Sprayers
- DuPont
- Chipco
- Vertagreen
- Daconil - Dacthal

Quality — Value — Service

PAARLBERG CHEMICALS

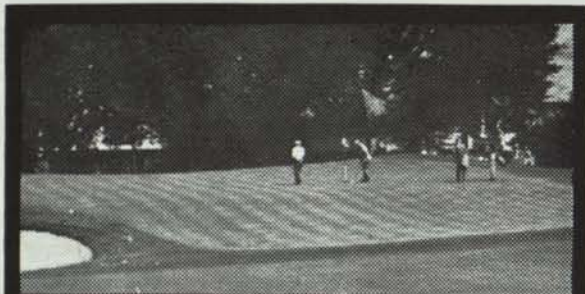
1840 E. 172nd & Paxton, So. Holland, Ill.
GR 4-3086 747-0630



IBDU® (31-0-0) and PAR EX® fertilizers with IBDU are custom formulated for high maintenance, high quality turfgrass. Check with your local PAR EX territory manager or distributor for other available grades.

Turf Products Ltd.	
West Chicago, Ill.	312-668-5537
Paarlberg Chemicals Co.	
South Holland, Ill.	312-474-3066
Olsen Distributing Co.	
Barrington, Ill.	312-381-9333
Professional Turf Specialists	
Normal, Ill.	309-454-2467
Turf Mgmt. Supply Co.	
Rockton, Ill.	815-624-7578
Tri State Toro Co.	
Davenport, Iowa	319-326-4416
Ken Quandt Territory Manager	
Buffalo Grove, Ill.	312-541-8492

par ex[®]
PROFESSIONAL PRODUCTS



a Golf Course . . . ?
sure! It's EASY with . . .

MILORGANITE



**...USED FOR
 ALL-SEASON
 FEEDING**

The golf course pictured has used nothing but MILORGANITE on its fairways since 1932. One application in Spring lasts through Summer . . . toughest period of the year; one application in late Summer lasts through Fall; another application in Fall feeds the grass through Winter . . . well into the following Spring. No wonder professional grass growers use more MILORGANITE than any other fertilizer!

**20 TON LOADS BAGGED
 DELIVERED FROM MILWAUKEE**

\$ 98 00
 PER TON

**BULK TRUCK LOADS
 F.O.B. MILWAUKEE**

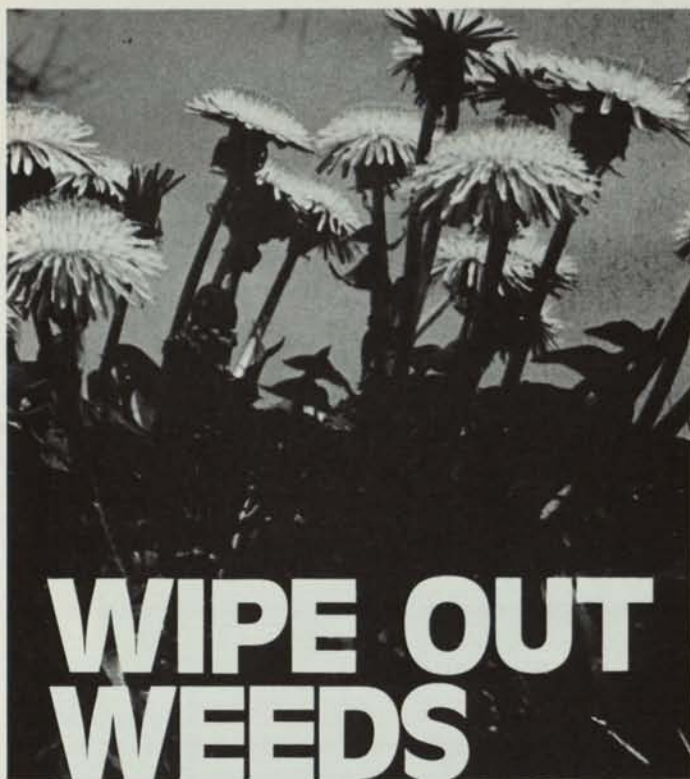
\$ 72 00
 PER TON

Delivered in Chicago Our Trucks	Per Ton
20 ton truckload	\$114.00
12 ton truckload	120.00
6 ton truckload	124.00
3 ton truckload	126.00
1 ton truckload	130.00

Picked up at Davis Chicago Warehouse	Per Ton
20 ton truckload	\$108.00
12 ton truckload	110.00
6 ton truckload	115.00
3 ton truckload	117.50
1 ton truckload	120.00
Less than 1 ton	

George A. Davis, Inc.

5440 NORTHWEST HIGHWAY, CHICAGO, ILLINOIS 60630 • 312-763-6363



WIPE OUT WEEDS

with **Banvel® 4S** & **Banvel®+2, 4D**

HERBICIDES

The broadleaf weed 'specialists' designed for professional turf programs.

Here's why BANVEL® herbicides are the professionals' choice for weed control:

- Used as directed Banvel will not harm trees, ornamentals or turf—it just eliminates weeds.
- No season restrictions. Lay down Banvel from early spring to late fall—all through the growing season.
- Rain will not affect Banvel. It keeps on working because it translocates—penetrates leaves and is absorbed through roots to attack every part of the weed.
- No special spraying equipment necessary. It is easy to clean out of equipment after use.
- Mixes readily with hard or soft water.
- Easily stored through winter months without losing potency.

Banvel herbicides—products for professional turf men



Velsicol

VELSICOL CHEMICAL CORPORATION
341 East Ohio Street
Chicago, Illinois 60611

©Velsicol Chemical Corporation, 1976



2 N 255 County Farm Rd.

West Chicago, Ill. 60185

Phone 668-5537

NATIONAL CHEMSEARCH CORP.

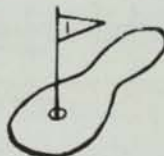
222 South Central Ave.
St. Louis, Missouri 63105

PENNCROSS & TORONTO C-15 BENT SOD

and

TORONTO C-15

BENT STOLONS



- Pure to Strain
- Maintained at 1/4" mowing height with "Greens King"
- Grown on Sandy Loam Soil
- Toronto C-15 Strain resistant to leafspot

ALSO FEATURING

- XL-100 Bluegrass Blend Sod

"For the Superintendent who wants the best"

XL-100 is a blend of five bluegrass varieties that were ranked superior in tests conducted at major Midwest Universities.

XL-100 is disease resistant, shade tolerant (60%) and adaptable to close mowing.



H & E Sod Nursery, Inc.

3900 West 167th Street
Markham, Illinois 60426

312/596-7200

Donald A. Hoffman, golf course superintendent at Timber Trails Country Club, La Grange, recently completed the stringent certification requirements of his national professional organization, the Golf Course Superintendents Association of America (GCSAA).

Hoffman, superintendent of the Timber Trails Country Club since 1978, was honored in a presentation at the Nordic Hills Country Club, Itasca, during a meeting of the Midwest Association of Golf Course Superintendents. Michael R. Bavier, CGCS, superintendent of the Inverness Country Club, Palatine, made the formal presentation. Mike Bavier is also a director of the GCSAA.

To attain certification, Hoffman, was required to meet eligibility requirements of tenure and experience and then successfully complete a six-hour written examination. Areas covered in the test include turf management, pesticide usage, business administration, leadership, the game of golf and knowledge of GCSAA.

A level of proven competence achieved by few golf course superintendents in the United States, the certification program was initiated by GCSAA in 1971 to provide a means of verifying an individual's capabilities and qualifications on an objective basis.

Hoffman and his wife, Susan reside at 8309 B. Portsmouth Drive, Darien (IL).



l. to r. - Mike Bavier, Don Hoffman, Phil Bersin

SUPERINTENDENT POSITION OPEN

Villa Olivia G.C., 18 holes, also ski hill, 2 new holes from tee to green, installing new irrigation semi-automatic system. Contact Phil Corrado, 742-5200.

On Tuesday, March 27, 1979 Glen Oak C.C. had a helicopter come in and spray all their greens and fairways. No snow mold treatment had been applied in the fall of the year due to the weather and the course had a tremendous amount of snow mold on their turf. Fred Opperman, Superintendent felt that an application of fungicide was needed to prevent any further damage from taking place from cool wet weather diseases. The ground was too soft for the heavy spray rigs so a helicopter was hired to apply the fungicide. The firm charged \$7.50 per acre for this service. The course was sprayed in just under two hours time.

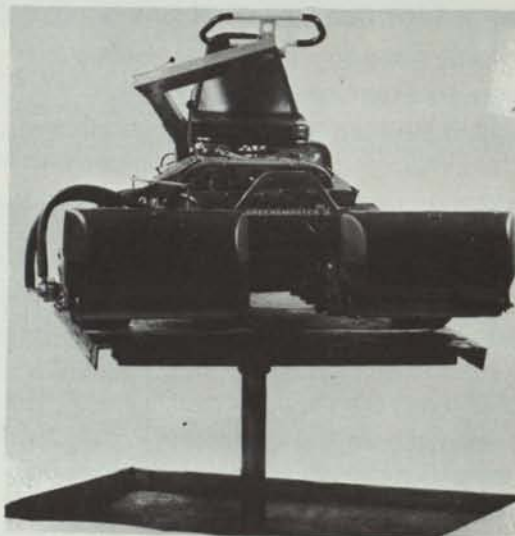


Getting Ready for the Take-Off



Mission Accomplished

HYDRAULIC LIFT TABLE



**Comfortable height - lubrication
Adjustments - visual inspection**

Hanson Manufacturing Company, Inc.
152 Rosedale, Crystal Lake, IL 60014
815-459-1672



Editor

MIDWEST BREEZES

M.A.G.C.S March 26 meeting held at Nordic C.C. was attended by sixty-two members. This was not one of our larger attended meetings; it was one of our better educational meetings. It was very timely. **Len Berg** and **Dudley Smith** started the program with the showing of slide pictures of various equipment buildings damaged by the past winter's exceptionally large amount of snow. Some buildings were a total loss; others the roofs collapsed and had to be replaced. Some equipment stored in these buildings was ruined and had to be replaced or repaired at a high cost. It appeared that the golf carts stored in these buildings suffered the most damage. How lucky some of us were at our homes or at our place of employment; so count your blessings. To continue the program **Bob Williams**, super at Bob O'Link G.C., took over showing pictures of snow mold on various strains of turfgrass and also different types of the fungus. Bob's excellent pictures showed the different areas on the course where snow mold occurred, more or less. His explanations along with the fine photography helped make the day a worth while one.

April 1st may be April Fools Day to most of us, but to **Amos Lapp**, former Supt. at St. Andrews C.C. it was a different day. Approximately 200 of Amos' relatives and friends gathered at St. Andrews to help him celebrate his seventy-fifth birthday. Congratulations, **Amos**, and hope you have many, many more.

On March 27, 1979 the Chicagoland Supts. Assoc. held their annual meeting at Barrington C.C. Supt. **John Ebel** was their host. The meeting was held in John's spotless maintenance building. When I say spotless, that is a true word. The meeting was held in the same building last year. If the condition of this building is any indication of what the condition of the golf course is like, the members should feel that they should take a shower before going out to play rather than after they have finished playing. **Bob Williams**, Super at Bob O'Link C.C. is now the President; **Carl Hopphan**, Supt. at Aurora C.C. is Vice President. Directors elected were **Mike Nass**, Supt. Bryn Mawr C.C., **Jim Johns**, Supt. Northmoor C.C. Some labor cost figures were discussed and the following amounts seemed to prevail: Assistant Supt. - \$16,000 to \$20,000; Mechanic - \$18,000; year around labor - \$12,000 to \$14,000; season labor - \$5.50 to \$6.00 per hour depending on what fringe benefits they will receive. These figures are for your future consideration, if they have not already taken place at your club.

Dear Ray;

Since May includes Mother's Day, perhaps a word about the Ladies is apropos.

"SUPER PAL"

How often we forget to mention Her name,
 All Her assistance has kindled the flame.
 She's a sounding board and elevates the morale.
 To tolerate the hours, She sure is a Pal.
 How often it's said, "The course is your life".
 That wouldn't be possible, without a fine wife.
 She shares the misery, should share the fame.
 She's certainly wonderful, part of the game.
 Her honorable mention, is long overdue,
 For from the start, She's been one of the crew.
 So may I tip my hat and bare a big smile,
 To the Pal, who makes it all worth while.

Superintendently,
Kenneth R. Zanzig
 Green Garden C.C.

MAGCS PERSPECTIVE

I was saddened the other day to find out that one of our newer Golf Course Superintendents felt the Midwest Association of Golf Course Superintendents was not a very friendly group of men. It turns out that this person, who is very serious about his profession, expected to be greeted, welcomed and made to feel comfortable around his new peers. It turns out that, being enthusiastic in his new profession, he expected to be able to share his problems on the golf course and ask questions on a professional level in hopes of solving these problems. It turns out that this new member of the M.A.G.C.S. had recently reached two long range goals, that of becoming a Golf Course Superintendent, and that of becoming an active member in the M.A.G.C.S. The only trouble was that what really turned out was disappointment in the M.A.G.C.S., because what he had hoped for really never happened. When he walked into his first meeting everyone else was so busy talking in their own groups that no one noticed him. No one greeted this new face and made him feel welcome. At the dinner table he was finally able to enter into the conversation, but some of his questions were disposed of too quickly, because the conversation never really included him. It's too bad that this man did not feel welcome, because we as an association may have lost a good man. Worse than that, the industry may have lost a good Golf Course Superintendent.

Pete Leuzinger
 Supt. - St. Charles C.C.

A GIN CHALLENGE

In the days of yore, out in the wild west gun fighters who established a reputation with fast pistols were often sought out and challenged by others who foolishly thought they could out-draw them in a gun duel. What has this got to do with Gin? Nothing! Just an analogy and a challenge to all midwest gin players that Mike and I will take on all players who foolishly think they can beat skill and technical knowledge with luck and superstition. Name the place, time and street.

Says Paul Voykin

The M.A.G.C.S. May meeting will be held at Pine Crest C.C., Huntly, IL on Monday, May 7. **Jim Ford**, Supt. will be our host. Bring your golf clubs and enjoy a day on a beautiful golf course. **Jim** will be looking for you.

Timber Creek

Farms and Nurseries



GROWING A GENERAL LINE OF
NURSERY STOCK

Catalog upon Request
12608 Charles Road - Woodstock, IL 60098

1-(815) 338-0200

**Nutrient deficiencies,
weeds, diseases,
thin turf, insects.**

For the superintendent
who has everything . . . or
anything . . . or who just wants
to make a good thing better . . .
ProTurf offers research tested,
golf course proven professional
turf products.

Just give me a call.



A division of
O. M. Scott & Sons

LEE OVERPECK
219 GRANT DRIVE
BOLINGBROOK, IL 60439
PH: 312-759-7061

DICK EVENSON
443 WOODVIEW DR
SUN PRAIRIE, WI 53590

BILL KENEIPP
1785 HINSDALE DRIVE
DECATUR, IL 62526
PH: 217-877-9029

