

**THE BULL SHEET, official publication of the
MIDWEST ASSOCIATION OF GOLF COURSE
SUPERINTENDENTS.**

Editor — Ray Gerber
865 Hillside Ave.
Glen Ellyn, Ill. 60137
Phone — 469-6467

Associate Editor — Robert Williams
90 East Franklin, Apt. 208
Lake Forest, Ill. 60045
Office Phone — 432-0088

Bull Sheet printed by Ever-Redi Printing, La Grange,
Illinois 60525. Phone: 312-352-4378.

MAGCS BOARD OF DIRECTORS FOR 1979

OFFICERS

President — Robert Breen
First Vice President — Edward Fischer
Second Vice President — Len Berg
Secretary-Treasurer — David Meyer

DIRECTORS

Phillip Bersin	Don Hoffman
John Berarducci	Thomas Vieweg
Peter Leuzinger	Joe Grenko
Executive Secretary—Dorothy Warren	

The following is a list of office telephone numbers to
the entire Board.

Robert Breen	653-5800
Edward Fischer, CGCS	887-8374
John Berarducci	835-4296
Joe Grenko, Emeritus	634-0100
Phillip Bersin	964-6690
Don Hoffman	246-0281
Len Berg	985-8366
Peter Leuzinger	584-3403
David Meyer	529-4303
Thomas Vieweg	639-2545
Dorothy Warren	974-1121



**President, Edward Fischer, CGCS
PRESIDENT'S MESSAGE**

I wish to once again thank the membership for the confidence they have shown in me by electing me as President of the Midwest Golf Course Superintendents Association. I hope to accomplish much, but I need help, a lot of help. The Board is elected to help, but you the membership must help the most, you must be willing to work on committees, come up with suggestions, and solutions to the problems of the Association, it is your Association, and I as your President and or the Board cannot accomplish a thing without your help.

One item that we need to resolve soon is the age old problem of getting response from the membership on reservation cards for the monthly meetings. A couple of ideas have been tried without much success, so come up with some ideas so at the next meeting we can resolve this problem.

I would like to take this time to thank our President of last year, Bob Breen, on a job well done. He is going to be a hard act to follow, especially his President's Messages. Thanks, Bob for a fine job from me and the M.A.G.C.S. membership.

The Board and I will do our best to serve the membership to the best of our ability. Let's hope that this is one of the best years that this Association has ever had, and with your help it cannot be anything but successful.

POSITION OPEN

Assistant Superintendent wanted for 18 hole private country club at Hammond, Indiana. Contact Jim Frels at 219 - 844-0330, Ext. 49 for an interview or send resume to Jim Frels, Supt. Woodmar C.C., 1818 177th St., Hammond, IN 46324. Some experience in turf management preferred.

WANTED

Supervisor to fill position at Marriott's Lincolnshire Resort. Excellent pay and benefits. For more information call Richard Hahn, Jr., 312 - 634-0100, Ext. 6160.

FOR SALE

1 used Toro Greensmaster lawn mower for putting greens, serial #0411481548. If you are interested, contact Ed Esler, 246 Orton Ave., Wauconda, IL 60084 or phone 312 - 526-2122 (work) or 312 - 526-8889 (home).

JOB VACANCY NOTICE

The Administrative Board of the Sugar Creek Golf Course, located in Villa Park/Elmhurst, Illinois, is seeking a qualified golf course manager to assume responsibility for course maintenance, administration and direction of an Executive 9 Hole Course.

The Manager we seek must have previous turf management and administrative experience and the ability to organize and direct a full and part-time staff. The successful candidate should also possess experience in budget preparation and operating support services such as food and beverage sales.

Graduation from a university is desirable, but not required. A starting salary, ranging between \$14,282 and \$20,804, a residence and comprehensive fringe benefits will be offered to the successful candidate.

Please send your resume and salary history in confidence to:

Wayne L. Lulay, Chairman Search Committee, c/o Villa Park Recreation Department, 320 East Wildwood Street, Villa Park, IL 60181 (312) 834-8525. Closing date: January 15, 1980.

Dear Mr. Gerber:

Congratulations! Your publication has been given honorable mention in the Association Magazine category of the first Harry C. Eckhoff Award contest conducted by the National Golf Foundation.

The contest was conducted to honor excellence in publications and newsletters produced by golf-related organizations. Entries were judged on appearance, content and other criteria established by a panel chosen by the National Golf Foundation.

Eckhoff has been associated with the National Golf Foundation, a non-profit organization dedicated to the advancement of golf, for 22 years, first as Executive Director and more recently as Director, Information Services.

Recipients will receive appropriate awards.

Don Rossi, Executive Director
National Golf Foundation

ROSEMAN

2620 CRAWFORD AVE. 864-1842
EVANSTON, ILLINOIS

TURF EQUIPMENT HEADQUARTERS

ROSEMAN GANG MOWERS	FORD TRACTORS
TILLER RAKES	DEDOES AERIFIER
LELY SPREADERS	LOADERS
SEEDERS	LEAF MULCHERS
ROTO TILLERS	ROTARY MOWERS
HOMELITE CHAIN SAWS	HOMELITE PUMPS

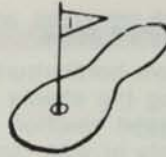
SALES ● SERVICE ● PARTS ● RENTALS

PENNCROSS & TORONTO C-15 BENT SOD

and

TORONTO C-15

BENT STOLONS



- Pure to Strain
- Maintained at 1/4" mowing height with "Greens King"
- Grown on Sandy Loam Soil
- Toronto C-15 Strain resistant to leafspot

ALSO FEATURING

- XL-100 Bluegrass Blend Sod

"For the Superintendent who wants the best"

XL-100 is a blend of five bluegrass varieties that were ranked superior in tests conducted at major Midwest Universities.

XL-100 is disease resistant, shade tolerant (60%) and adaptable to close mowing.



H & E Sod Nursery, Inc.

3900 West 167th Street
Markham, Illinois 60426

312/596-7200

C. E. DAUGHERTY CO.

1855 W. Stuart Ln.

Palatine, Illinois 60067

(312) 359-0602

Representing:

MITTS & MERRILL — Brush and Limb Chipper

AQUASHADE INC. — Pond Beautifier

COURSIGNS INC. — Golf Course Signs -
Trap Rakes - Litter
Receptacles

CARRON NET CO. INC. — Tennis Nets -
Wind Screens
- Dividers -
Straps &
Tapes

POLLARD BROS. — Work Benches -
Cabinets, Barrell
Stands

LOFT-KELLOGG — Grass Seeds

GRASS-CEL — Paving Blocks

IN YOUR GARDEN

The fact that last winter was tough on trees and shrubs is an understatement.

James A. Fizzell, University of Illinois horticulturist in Cook Co. says, "We are still seeing the effects of the winter as plants expire from delayed reaction to the damage." Plants girdled by rodents or with roots injured by excess water or low temperatures can live quite a while before the stored foods are used up.

You can avoid many of the winter problems by preparing now.

Mow all grass and weeds around the trunks of the trees and shrubs. Use hand clippers on vegetation you cannot cut with a lawn mower. Be sure not to nick the bark. Unmowed vegetation provides cover for field mice which eat the inner bark of trunks and roots, frequently killing fruit trees.

Rabbits eat the bark off the trunk and any branches within reach, particularly on young fruit trees. However, Fizzell notes, they do not bother older trees which have developed heavy outer bark. Either chemical repellants or mechanical barriers are recommended for protection from rabbits. Spray the repellant on trunk and lower branches as recommended on the label. Chemicals are more effective in protecting shrubs than mechanical barriers. Use chicken wire or hardware cloth to form a cylinder around the trunk. The cylinder should be at least 2 inches from the trunk and high enough to provide protection in the event of heavy snow cover. Or, wrap the trunk with newspapers, waterproof paper, or tree wrap.

Wrapping the trunk will also help protect trees from winter sun scald, says Fizzell, and will benefit even older trees not subject to rabbit damage.

Trunk wrapping does not keep the trunk warmer, but provides shade from the winter sun which could elevate the temperatures of the inner bark to the point where it begins growing even in mid-winter. When the sun sets, temperatures rapidly drop to freezing or lower; this causes ice crystals to form in the inner bark, killing it. Such injury usually occurs on the south or southwest side of the trunk, the area most likely to be warmed by winter sunlight, and may not become apparent until the next summer. Some nurseries are investigating white paint on the trunk as a protection from winter sun damage.

Remove the wrap when growth starts in the spring as these wrappings provide cover for insects which may injure the trunk during the growing season.

Of major concern in winter survival is drainage, says Fizzell. Fill low areas so water will not stand around the stems and roots during the winter months. Such conditions are ideal for development of disease organisms which could attack the plants at the soil line and kill them. Roots in standing water can suffocate and rot away.

**James A. Fizzell, Sr. Ext. Advisor, Horticulture
University of Illinois at Urbana-Champaign**

18 WAYS OF MIS-USING EQUIPMENT

Remember this is what takes place when you mis-use equipment.

1. Run equipment at excessive speeds.
Result - poor cutting appearance.
2. Run equipment with loose bolts and nuts.
Result - (a) bolts will become elongated due to vibration.
(b) bolts and nuts when lost usually end up between the reel and the bed knife.

3. Run equipment improperly adjusted, such as: (a) belts and chains, (b) clutches, (c) reel and bed knife.

Result - (a) Wear out prematurely and cause undue wear to pulleys, sprockets and bearings (b) wear clutch plates and linings, (c) will not cut properly and will wear bed knife and reel prematurely.

4. Operate with accumulation of grass clippings and dirt in air cooling fins on engine.

Result - will cut out flow of air causing engines to run excessively warm. May cause fires.

5. Operate equipment not properly lubricated.

Result - bearings, shafts, sprockets and all wearable parts will not stand up. This will cause poor performance of any equipment.

6. Operate engine with little or no oil in crankcase.

Result - connecting rod will seize in cylinder.

7. Operate engine with air - cleaner empty.

Result - will affect carburetion giving poor engine performance and shorten life of engine due to dirt entering engine.

8. Using improper equipment for the job. Example - using a light duty piece of equipment where a heavy duty should be used.

Result - poor finished job and equipment will not stand the gaff. Example would be - sending a boy to do a man's job.

9. Using improper fuel in engines such as white gas, etc.

Result - manufacturer's recommend standard gasoline, and substitutes will cause poor engine performance, also wear engine prematurely.

10. Operating equipment with faulty parts.

Result - one worn or missing part will possibly wear five others causing expensive maintenance costs.

11. Using heavy detergent oil in engines or number 10 weight oil.

Result - manufacturer's recommend non-detergent oils and number 10 is **too light** due to the high r.p.m. under which engines operate.

12. Operate any rotary mowing equipment with cutter bar out of balance.

Result - will cause undue vibration and wear bushings, bearings and could crack housings.

13. Use reel type mowers where there is any stones, or debris.

Result - tear up reels giving poor cutting appearance.

14. Over-grease or use wrong lubricant.

Result - excessive grease or wrong lubricant will fall on turf harming grass. Dirt will hang to unit.

15. Use air pressure grease guns when lubricating.

Result - pressure build up will cause fittings to pop out.

16. Drain engine oil when cold.

Result - Sediment in oil is not in suspension and will settle to the bottom of the sump. If drained when warm, 90% of the sediment will flow out.

17. Spray water on cylinder head and cylinder when cleaning equipment that is hot.

Result - will cause warpage and may crack head or block.

18. Mis-use of equipment such as:

(a) hitting obstructions, (b) jumping curbs, (c) transporting walking greensmowers on roller.

ASPHALT DRIVEWAYS — PARKING LOTS — ETC.

"Golf Course Work a Specialty"

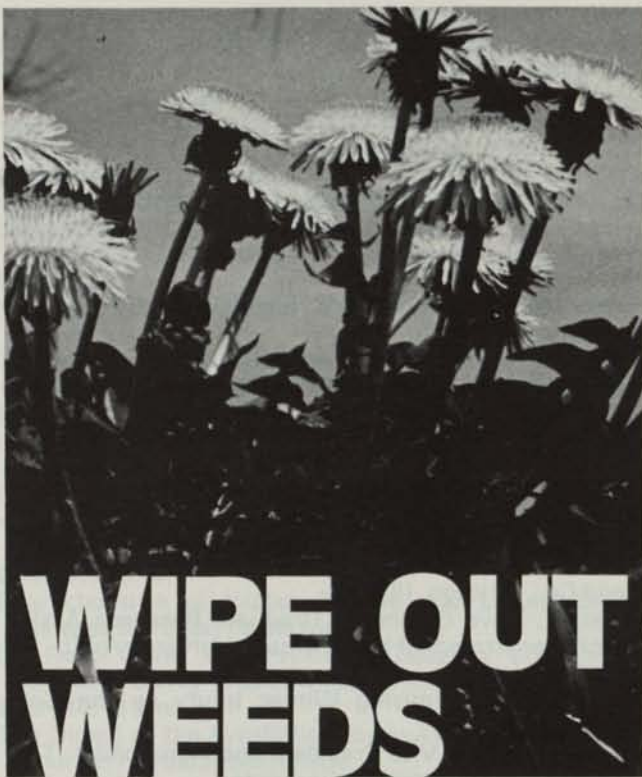
LEMONT PAVING CO.

SAND & STONE

115th & Archer Ave (Rt. 171) - Lemont, Illinois

RAY MURPHY

257-6701



WIPE OUT WEEDS

with Banvel® 4S & Banvel®+2, 4D

HERBICIDES

The broadleaf weed 'specialists' designed for professional turf programs.

Here's why BANVEL® herbicides are the professionals' choice for weed control:

- Used as directed Banvel will not harm trees, ornamentals or turf—it just eliminates weeds.
- No season restrictions. Lay down Banvel from early spring to late fall—all through the growing season.
- Rain will not affect Banvel. It keeps on working because it translocates—penetrates leaves and is absorbed through roots to attack every part of the weed.
- No special spraying equipment necessary. It is easy to clean out of equipment after use.
- Mixes readily with hard or soft water.
- Easily stored through winter months without losing potency.

Banvel herbicides—products for professional turf men



Velsicol

VELSICOL CHEMICAL CORPORATION
341 East Ohio Street
Chicago, Illinois 60611

©Velsicol Chemical Corporation, 1976

ARTHUR CLESEN INC.

Cleary Turf Chemicals

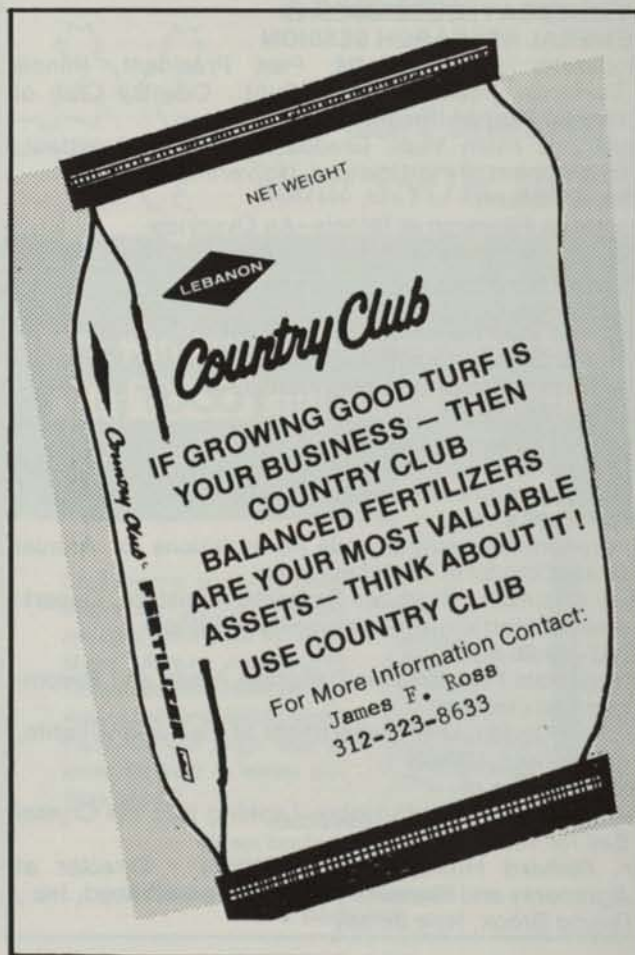
Country Club & Vertagreen
Fertilizers
Turfgrass Seed

Soil Conditioners — Bark — Mulches

"Easy Markers" & Paints

611 So. Wolf Road
Wheeling, Illinois (312) 537-2177

SUPPORT YOUR ADVERTISERS



20TH ILLINOIS TURFGRASS CONFERENCE AND SHOW

December 18-20, 1979
at the Ramada Inn Convention Center
Champaign, Illinois

TUESDAY, DECEMBER 18 - 8:00 a.m.

Registration
Ramada Inn Convention Center Lobby

8:30 a.m. - 1:00 p.m.

Commercial Exhibits Open
University Hall and Midwest Ballrooms

TURFGRASS WORKSHOPS

1:30 - 4:30 p.m. - Workshop A

Basic Principles of Turfgrass Disease
Identification and Control

Dr. Houston B. Couch, Department of Plant Pathology
and Physiology, VA

Polytechnic Institute and State University, Blacksburg,
VA, and Dr. Malcom C. Shurtleff, Department of
Plant Pathology, University of Illinois

1:30 - 4:30 p.m. - Workshop B

Basic Communication Skills Tailored to the Turfgrass
Industry

Dr. Jesse G. Delia, Department of Speech Communi-
cations, University of Illinois

4:30 - 7:30 p.m. - Commercial Exhibits Open
(cash bar)

7:30 - 8:30 p.m.

Illinois Turfgrass Foundation Business Meeting

8:30 p.m.

Illinois Pesticide Applicators and Operators Exami-
nations

Mr. Juett Hogancamp, Pesticide Coordinator, Illinois
Department of Agriculture, Springfield, Illinois

WEDNESDAY, DECEMBER 19

GENERAL RESEARCH SESSION

Moderator: David Fearis, Past President, Illinois
Turfgrass Foundation and Supt., Country Club of
Peoria, Peoria, Illinois

Assistant: Allan Yust, Graduate Research Assistant,
Department of Horticulture, University of Illinois

8:30 - 9:15 a.m.

Turfgrass Research at Illinois--An Overview

Dr. A. J. Turgeon, Department of Horticulture,
University of Illinois

9:15 - 9:30 a.m.

Pesticide Fate Research Using Microecosystems

Bruce Branham, Graduate Research Assistant, Depart-
ment of Horticulture, University of Illinois

9:30 - 9:45 a.m.

Nitrogen Fate Research in Turf

Bill Torello, Graduate Research Assistant, Department
of Horticulture, University of Illinois

9:45 - 10:00 a.m.

Controlled-Release Pesticide Formulations for Annual
Grass Control in Turfgrass Sites

Dave Chalmers, Graduate Research Assistant, Depart-
ment of Horticulture, University of Illinois

10:00 - 10:20 a.m.

Annual Pest Problems on Turfgrass Areas and Recom-
mended Controls

Mr. Ron Ogden, U.S. Department of Fish and Wildlife,
Springfield, Illinois

10:20 - 10:40 a.m.

The Turfgrass Seed Industry--Looking Into the Crystal
Ball for 1980

Mr. Richard Hurley, Vice President - Director of
Agronomy and Research, Lofts Pedigreed Seed, Inc.,
Bound Brook, New Jersey

10:40 - 11:05 a.m.

Present Evaluation of Perennial Ryegrass and Fine
Fescue Cultivars for Turfgrass Seeding Operations
Dr. William Meyer, Pure-Seed Testing, Inc., Hubbard,
Oregon

11:05 - 11:30 a.m.

Athletic Field Construction--An Interesting Approach
Dr. Don White, Department of Ornamental Horticul-
ture and Landscape Architecture, University of
Minnesota, Minneapolis, Minnesota

11:30 - 11:55 a.m.

Growth Regulators--Present Status and Future Per-
spectives

Dr. Ray Freeborg, Department of Agronomy, Purdue
University, West Lafayette, Indiana

11:00 - 1:30 p.m. - Commercial Exhibits Open

(Sandwiches and soft drinks available)

GOLF TURF SESSION

Moderator: Duane Hobbs, Research and Product Deve-
lopment Representative, E. I. du Pont de Nemours
and Co., Chicago, Illinois

Assistant: Dave Chalmers, Graduate Research Assis-
tant, Department of Horticulture, University of IL

1:30 - 1:55 p.m.

Methods for Minimizing Winter Injury on the Golf
Course

Dr. J. R. Watson, Vice President and Agronomist, The
Toro Co., Minneapolis, Minnesota

1:50 - 2:15 p.m.

Turfgrass Cultivation -- Pros and Cons

Dr. Paul Reike, Department of Crop and Soil Sciences,
Michigan State University, East Lansing, Michigan

2:15 - 2:35 p.m.

The Care of the Golfer

Mr. Bill Lyons, President, Lyons Den Golf Course,
Canal Fulton, Ohio

2:35 - 2:55 p.m.

Wetting Agents on the Golf Course - A Superintendents
Experience

Mr. Bruce Williams, Superintendent, Bob O'Link Golf
Club, Highland Park, Illinois

2:55 - 3:05 - Break

3:05 - 3:30 p.m.

Fertilizer Programs for Bentgrass Putting Greens

Dr. Don Waddington, Department of Agronomy,
Pennsylvania State University, University Park, PA

3:30 - 3:50 p.m.

An Overview of Overseeding Programs Throughout the
Country

Mr. Richard Hurley, Vice President and Director of
Agronomy and Research, Lofts Pedigreed Seed, Inc.,
Bound Brook, New Jersey

3:50 - 4:10 p.m.

An All Out Approach to Fairway Renovation

Mr. Jim Brandt, Superintendent, Danville Country
Club, Danville, Illinois

4:10 - 4:30 p.m.

Some Current Observations and Ideas on Sand Top-
dressing

Mr. Carl Schwartzkopf, North Central Director, USGA
Green Section, Crystal Lake, Illinois

4:30 - 6:00 p.m. - Commercial Exhibits Open

6:30 p.m. - Banquet

Moderator: Al Herbster, President, Illinois Turfgrass
Foundation and Grounds Superintendent, University
of Chicago, Chicago, Illinois

Speaker: Dr. Houston B. Couch, Department of Plant
Pathology and Physiology, Virginia Polytechnic
Institute and State University, Blacksburg, Virginia

"The Humor of Turf"

**THURSDAY, DECEMBER 20
NITROGEN SYMPOSIUM**

Moderator: Dr. A. J. Turgeon, Department of Horticulture, University of Illinois

Assistant: Bruce Branham, Graduate Research Assistant, Department of Horticulture, University of IL

8:30 - 8:45 a.m.

Nitrogen and the Turfgrass Plant

Dr. J. R. Street, Department of Horticulture, University of Illinois

8:45 - 9:10 a.m.

Nitrogen Fertilizers and How They Work in the Turfgrass System

Dr. Paul Reike, Department of Crop and Soil Sciences, Michigan State University, East Lansing, Michigan

9:10 - 9:30 a.m.

Late Season Nitrogen Fertilization - How Far North Does It Work?

Dr. Don White, Department of Ornamental Horticulture and Landscape Architecture, University of Minnesota, Minneapolis, Minnesota

9:30 - 9:50 a.m.

Characteristics of Water Soluble and Liquid Slow-Release Nitrogen Fertilizers

Dr. Roger Funk, Vice President, Research and Development, Davey Tree Lawnservice Service, Kent, Ohio

9:50 - 10:10 a.m.

The Oldest of the Synthetic Slowly-Available Nitrogen Sources - Ureaformaldehyde

Dr. John T. Hays, Research and Product Development Specialist, Hercules Research Center, Boots Hercules Agrochemicals Co., Wilmington, Delaware

10:10 - 10:25 a.m.

Are All Ureaformaldehyde Fertilizers the Same?

Dr. George McVey, Research Agronomist, O. M. Scott and Sons, Marysville, Ohio

10:25 - 10:45 a.m.

Characteristics of Sulfur-Coated Urea and Natural Organic Nitrogen Fertilizers

Dr. Seward E. Allen, Research Agronomist, National Fertilizer Development Center, Tennessee Valley Authority, Muscull Shoals, Alabama

10:45 - 11:05 a.m.

Understanding Isobutylidene Diurea (IBDU)

Dr. Bob Rehberg, National Sales Manager, Estech General Chemical Corporation, Winter Haven, FL

11:05 - 11:30 a.m.

Long-Term Field Performances of Nitrogen Fertilizers

Dr. Don Waddington, Department of Agronomy, Pennsylvania State University, University Park, PA

11:30 a.m.

Questions on Nitrogen and Nitrogen Fertilizers

For more information contact:

Dr. John R. Street, Turfgrass Extension Specialist

Dear Ray;

This is to inform you and the MWGCSA membership of my decision to leave the University of Illinois in order to accept the position of Professor and Resident Director of Texas A & M University Research and Extension Center at Dallas, effective January 1, 1980. This was a difficult personal decision especially in view of the enthusiastic support that I have enjoyed from members of MWGCSA and other organizations over the past eight years.

Thanks in part, to your encouragement and support, the turfgrass research program at the University of Illinois is regarded as one of the leading programs of its type in the United States. While I am saddened over having to leave so many good friends in Illinois, I

am confident that our turfgrass research program will continue to grow and effectively serve the needs of turfgrass personnel throughout the state. The administration here is already at work to find a suitable replacement for my position, and I am confident that they will be successful in the near future.

I wish to extend my most sincere appreciation for your excellent support and friendship during my tenure at the University of Illinois. Best wishes to all of you in the years ahead.

**A. J. Turgeon, Associate Professor
of Turfgrass Science**

Dear Ray;

Another year is at it's end, causes one to re-evaluate as well as look ahead.

"DECEMBERTIME"

December brings winter, Christmas,

The end of the year.

December brings love, friendship,

And lots of good cheer.

One also gets the feeling.

That a year is passing away.

Did we make the most,

Of every precious day?

Did we accomplish the dreams,

We started last spring?

Did we help the year,

To have a full fling?

If we can say yes,

To the questions above,

You can be sure that December,

Will be filled with love.

We know at it's end,

A New Year will start,

May we all face it,

With goodness at heart.

Superintendently,

Kenneth R. Zanzig

Green Garden C.C.



*Snow time
is no time
to start thinking
about SNOW MOLD*

**start winter disease control NOW
with TUCO Acti-dione® Thiram**



Cold weather and snow cover before the ground is frozen are ideal conditions for Snow Mold. Apply Acti-dione Thiram late fall before the first snow cover and during winter thaws to fight fungi. See us today for help in winter disease control.

Distributed by
**Chicago Toro Turf Irrigation Inc.
TURF PRODUCTS LTD.**
Don Maske, Agri-Chemical Sales Specialist
Phone: 815/838-8164

Schroeder's Nursery, Inc.



TREES - EVERGREENS - SHRUBS

Specializing in large Caliper shade trees and Ornamentals.
We also offer complete installation service.

TELEPHONE: (312) 546-9444

Arthur E. Schroeder
Richard A. Schroeder
Don Virgens

**GRAYSLAKE, ILL.
Rt. 1 - Box 34-W**

Nursery on Rt. 60 between Rtes. 12 (Volo) and 83 (Ivanhoe)

Nels J. Johnson, Tree Experts, Inc.

SINCE 1930

Nels J. Johnson, Sr. Karl G. Johnson
Nels J. Johnson, Jr. -
Complete, economical tree service for Private Estates,
Parks, Municipalities, Golf Courses, Cemeteries,
Schools, Industrial Areas.

All phases of Arboriculture, Diagnosing, Pruning, Treating,
Transplanting, Fertilization, Hydraulic and Mist Spraying,
Removals, Stump Routing, Municipal Forestry, Chemotherapy
for elms, and other trees.

• **FULLY INSURED** •

Graduate -- Licensed Arborists

MAIN OFFICE - 912 Pitner Avenue, Evanston, Illinois 60202
Phones: GRenleaf 5-1877 - GR 5-5255
Hinsdale, Illinois - FA 5-0970

GOLF COURSE IRRIGATION SALES CO.

Div. of Halloran & Yauch, Inc.
2040 Lehigh Ave., Glenview, Ill. 60025

Distributors of:

"AQUA DIAL" - Sprinklers & Valves

"MOODY" - Sprinklers, Valves & Controllers

**CUSTOM PUMP HOUSE CONSTRUCTION
AND REMODELING!**

IRRIGATION INSTALLATION & REMODELING!

GOLF COURSE DRAINAGE SYSTEMS!

Call Us For Your Golf
Course Irrigation Needs!

312-729-1625



2 N 255 County Farm Rd.

West Chicago, Ill. 60185

Phone 668-5537

BOJO TURF SUPPLY CO.

**Need Old Fashioned
LAPPING COMPOUND?**

**Now in stock
#80 & #100 grit**

**ALSO have thick carrier
to use with it.**



Call: 312-258-3485
R. R. 1, Box 52
Peotone, IL



Vertagreen

A product for all reasons



- Uniform particles flow smoothly and spread evenly.
- Half the nitrogen in Tee Green is Urea-Formaldehyde.
- A minimum of one-fourth the nitrogen in fairway grades is UF.
- Uniform balance of secondary and micro-nutrients in slow-release form — Ca, Mg, S, B, Cu, Fe, Mn and Zn.
- All potash derived from sulfate of potash.
- Polyethylene packaging.



Agri-Chemicals

Division of United States Steel
P.O. Box 1685
Atlanta, Georgia 30301

It's Playable



Rated First for:

**QUALITY
DENSITY
WEAR TOLERANCE
SHADE TOLERANCE**

Used straight or mixed with other elite bluegrasses, your turf problems are all but solved. Highly disease and drought resistant and it can be mowed down to 1/2 inch...ideal from the tee to the green.

BENTGRASS SOD OR STOLONS
Pennncross - Cohansey C-7 - Toronto C-15

Available as Sod, Sod Blend, Sod Plugs and Seed.

Warren's TURF NURSERY, INC.

8400 West 111th. Street
Palos Hill, IL 60465 - Phone: 312/974-3000



Mike Bavier — Bruce Burchfield — Carl Landgrebe

Mike Bavier, CGCS, director of the G.C.S.A.A. and Supt. at Inverness C.C., presented Bruce Burchfield and Carl Langrebe with their CGCS certificates. Mike also explained the most logical way to select a voting delegate plus other interesting items.



Carol McCue

CONGRATULATIONS!

On November 13, 1979, **Carol McCue**, Associate Executive Director of the CDGA, after 37 years of doing about everything in the office was honored at a special party. Carol at this time received the **Herb Graffis** award, made possible by the National Golf Foundation. Approximately 250 of her golfing friends attended this wonderful award dinner and thanked **Carol McCue** for everything she has done for the good of golf and it was considerable. It could not have happened to a more deserving person.

LABOR-SAVING GRASSES



GLADE KENTUCKY BLUEGRASS

- Does Great in Sun Or 60% Shade
- Excellent Disease Resistance to Powdery Mildew — Stripe Smut — Leafspot — Rust
- Quick Recovery — Fast Germinating

Adelphi

KENTUCKY BLUEGRASS

- Greens Up Earlier in Spring — Stays Green Longer In Fall
- Great Resistance To Disease

- Low Growing — Tolerates Close Mowing

CITATION

FINE LEAF PERENNIAL RYEGRASS

- Improved Mowing Qualities
- Blends Well With All Other Grasses

- Performs Great In Hot, Humid Areas

FOR MORE DETAILED INFORMATION AND TEST RESULTS WRITE TO:
VAUGHAN'S

5300 Katrine Avenue, Downers Grove, Illinois 60515, (312) 969-6300
WAREHOUSES LOCATED IN:
Bound Brook, New Jersey • Landover, Maryland • Ovid and Grand Ledge, Michigan • Spokane, Washington

The farmer had been taken in so many times by the local car dealer that when the time came for the car dealer to buy a cow, the farmer priced it to him like this:

Basic Cow	\$200.00
Two-tone Exterior	45.00
Extra Stomach	75.00
Product Storage Compartment and Dispensing Device	60.00
Four Spigots at \$10.00 each	40.00
Genuine Cowhide Upholstery	125.00
Dual Horns at \$7.50 each	15.00
Automatic Fly Swatter	35.00
Total Price	\$595.00