

thousand square feet. We have been using about 800 pounds of milorganite per acre in the dormant winter season and then applying urea, superphosphate and sulphate of potash as supplements. This program has been effective, efficient and most economical. In fact, my fairway fertilizer expense this past year was \$3600 for approximately 35 acres or roughly \$100 per acre. Perhaps modern day disease control ranks equally as high as all other factors in learning to live with poa annua. We have been on a strong preventive disease control program on our fairways for a number of years. In 1977 we used a total of 14 fungicide applications rotating three different prescriptions.

- 1st -- Daconil at 1 gallon per acre
- 2nd -- Combination of PMAS at 1 qt. per acre with/Thiram at 5 lbs. per acre
- 3rd -- Acti-Dione TGF at 2 pkgs. per acre

The rotation of the three formulations was determined on the basis of what was the most appropriate at any time in relation to the weather, phytotoxicity and type of disease organism that might be expected. When it comes to poa-annua on putting greens, I have a different attitude and a different approach. I detest having to tolerate poa in our greens and yet I am at a loss as to a painless method of eradication. Poa is particularly bad for golf on putting greens when it is seeding. We have greens with as much as 20 or 30% poa which is hardly noticed when it is not seeding. My long range program for fighting against the poa-annua in our greens is to resod the greens with poa free bent that we will grow in our nursery. We are presently evaluating both Evansville and Penn State's PBCB strains.

Allow me to conclude this report with a couple of observations which I believe are pertinent when considering the pros and cons of poa-annua. First, I have noted that some of our courses with the poorest irrigation systems have the highest percentage of bentgrass in their fairways, providing they have been overseeding with bent. I've also noticed that with the single row irrigation systems, you will find a higher percentage of bent along the outer edges of fairway and into the rough where less water is applied as compared to the center of the fairway. Both of these observations seem to tell us that we should use as little water as we can get away with on fairways without causing the poa to make a quick departure. Our golfers in the Chicago area pretty much judge our greenkeeping ability on the basis on how well the greens putt and whether or not we are able to hold the fairway turf throughout the season. Golfers are pretty intolerant with even moderate loss of grass on fairways. So, I believe most superintendents are doing whatever we can to live with poa in our fairways until the research people and industry can find a method or material for selective eradication of poa-annua.

Presented at U. of I.
December, 1977

NATIONAL CHEMSEARCH CORP.

222 South Central Ave.
St. Louis, Missouri 63105

Because of the benefits derived from attending Turf Conferences, my club officials insist that I go to San Antonio. I sincerely hope that other clubs are doing the same for their grounds superintendent.



The M.A.G.C.S. Secretary has informed me there are several members that have not paid their 1978 dues. If you are one of these, please take care of it as soon as possible, along with your correct address. Many letters are being returned. Should it become necessary to remove your name from the membership, it will also become necessary to remove your name from the **Bull Sheet** mailing list.

ROSEMAN

2620 CRAWFORD AVE. 864-1842
EVANSTON, ILLINOIS

TURF EQUIPMENT HEADQUARTERS

- | | |
|---------------------|-----------------|
| ROSEMAN GANG MOWERS | FORD TRACTORS |
| TILLER RAKES | DEDOES AERIFIER |
| LELY SPREADERS | LOADERS |
| SEEDERS | LEAF MULCHERS |
| ROTO TILLERS | ROTARY MOWERS |
| HOMELITE CHAIN SAWS | HOMELITE PUMPS |

SALES ● SERVICE ● PARTS ● RENTALS

USS Vertagreen... A product for all reasons.



For professional turf products you just can't beat the Vertagreen lineup. And this complete array didn't just happen. It's the result of many years of experience, testing and proven use—designed and formulated to meet every need and contingency.

USS Vertagreen products contain those extra pluses that separate them from ordinary turf fertilizers—like urea-formaldehyde

for sustained, long-term nitrogen release. There's potassium sulfate to provide needed sulfur for lush growth and a dark healthy color. And iron is available in chelated and fritted form. Add a complete guarantee of secondary and micro-nutrients and you have turf products that are second to none.

And backing this line of Vertagreen products are the best turf

teams in the business—your local Vertagreen distributor and a Vertagreen turf specialist. The two work together to help plan your tailor-made turf program and keep it running smoothly. And that makes it easy for you because when you want the best you just have to see the best—and that's your local Vertagreen distributor.

A product for all reasons.



Agri-Chemicals

Division of United States Steel

P.O. Box 1685, Atlanta, Ga. 30301

Dear Ray:

In the copy of the American Annual Golf Guide of 1925 that I have, I have jotted down the year from the beginning of golf in the U.S. - the year in which the clubs were established. I thought that this might be of interest to the Golf Course Superintendents.

Very truly yours,

George A. Davis
Pres. of the Davis Co.

NAME OF CLUB	ESTABLISHED
Chicago Golf	1893
Riverside	1894
Onwentsia	1895
Exmoor	1896
Glen Flora	1896
Glenview	1897
Skokie	1897
Peoria C.C.	1897
Elmhurst	1898
Hinsdale	1898
Midlothian	1898
La Grange	1899
Decatur	1900
Rockford	1900
Flossmoor	1900
Calumet C.C.	1901
Ravisloe	1901
Ridge	1901
Beverly C.C.	1907
Idlewild	1908
Lake Shore	1908
North Shore	1908
Evanston	1910
Park Ridge	1910
Westmoreland	1910
Glen Oak	1911
Indian Hill	1912
Old Elm	1913
Ridgemoor	1913
Oak Park	1914
Olympia Field	1915
Bob O'Link	1916
Shore Acres	1916
Northmoor	1919
Bryn Mawr	1920
Butterfield	1920

Nels J. Johnson, Tree Experts, Inc.

SINCE 1930

Complete, economical tree service for Private Estates, Parks, Municipalities, Golf Courses, Cemeteries, Schools, Industrial Areas.

All phases of Arboriculture, Diagnosing, Pruning, Treating, Transplanting, Fertilization, Hydraulic and Mist Spraying, Removals, Stump, Routing, Municipal Forestry.

—FULLY INSURED—

Licensed under the Illinois tree expert act. Nels J. Johnson, Sr., Joel Johnson, Jr., and Karl Johnson.

MAIN OFFICE: 912 Pitner Avenue, Evanston, Illinois
Phones: GR 5-1877 — GR 5-5255
Hinsdale, Illinois — FA 5-0970

“DO UNTO OTHERS AS YOU WOULD HAVE THEM DO UNTO YOU”

(Additions to above:)

- If you open it - Close It.
- If you turn it on - Turn It Off.
- If you unlock it - Lock It.
- If you borrow it - Return It.
- If you take it - Put It Back.
- If it is out of place - Put It Back.
- If you break it - Fix It or Report It.
- If you empty it - Fill It.
- If you make a mess - Clean It Up.
- If you dirty it - Wash It.
- If you dull it - Sharpen It.
- If you start something - Finish It.
- If you don't know how to operate it - Leave It Alone.
- If you haven't a positive thing to say - Be Quiet.

Research has placed
BenSun (A-34) Kentucky
Bluegrass in a class by itself!

RATED FIRST FOR WEAR TOLERANCE
RATED FIRST FOR SHADE TOLERANCE
RATED HIGH IN DISEASE RESISTANCE

BenSun (A-34) Kentucky bluegrass was the only bluegrass, out of 18 tested, to receive an excellent rating, for wear tolerance on golf courses. This test was conducted by a leading university doing turfgrass research. BenSun (A-34) is also rated first for shade tolerance (up to 65%) and near the top in disease resistance.

It grows vigorously in shade, sun, cool and warm climates, high and low altitudes, poor soil and even sand.

Write for more detailed information, a list of golf courses now using BenSun (A-34) and the research ratings referred to above.



- All Major Turf Supplies
- Par-Ex
- Bean Sprayers
- DuPont
- Chipco
- Vertagreen
- Daconil - Dacthal

Quality — Value — Service

PAARLBERG CHEMICALS

1840 E. 172nd & Paxton, So. Holland, Ill.
GR 4-3086 747-0630

BenSun (A-34) **KENTUCKY**
BLUEGRASS

Available as Sod, Sod Plugs and Seed

Warren's
TURF NURSERY, INC. / 8400 West 111th. Street
Palos Park, Illinois 60464
Phone: 312/974-3000



Where the sound from the North Sea meets the Baltic Sea, we find the Galsterdo Golf Club.



The "Troll-Oak" estimated age: 1,000 years, located in a cemetery of old viking graves. When the moon is full, gruesome trolls haunt the site. During certain days however when the sun is bright, trolls can appear in the shape of a blond, smiling and attractive woman; beware, however, she is still a "troll".



The charcoal mound - For during hundreds of years 1222 to 1798, fires burned on the mound. When the seafarers sighted the fires they knew that danger lay ahead and changed the course. It said though that when the fire was out the same dwellers helped themselves to provisions from the shipwrecks. 1978 the lighthouse replaced the fire mound. It is in service today and also houses a meteorological station.

A Club President is said to be a man who knows very little about a great deal and keeps knowing less and less about more and more until he knows practically nothing about everything.

On the other hand, a Green Chairman is a man who knows a great deal about very little and goes along knowing more and more about less and less, until finally he knows practically everything about nothing.

A Golf Course Superintendent starts out knowing practically everything about everything, but ends up knowing nothing about nothing, due to his association with Club Presidents and Green Chairmen.

**FOX CHASE
LANDSCAPING, LTD.**

Downers Grove, Illinois 60515
OFFICE 312/393-1199

- TRENCHING
- TREE REMOVAL
- IRRIGATION
- GRADING

Robert Siebert

FOR SALE

2 E-Z Go gasoline golf carts - Model GX-444
Brookwood C.C.
271 S. Addison Road
Wood Dale, IL 60191
312 — 595-4330

Len Schnepf, Supt.

FOR THE FINEST IN SOD

THORNTON'S TURF NURSERY

312 - 742-5030

Rt. 2 Box 72 Elgin, Ill.



Falsterbo Golf Club House

The club is within easy reach of three cities; Malmo on the Swedish coast north and opposite Copenhagen -- just across the Sound in Denmark. The Danish capital is due northwest from Falsterbo Golf Club. Annually, large, shining white ferries carry millions of passengers between Copenhagen and Malmo. Excellent food and drinks are served during the crossing of the Sound (1 hour 45 minutes) and at reasonable prices. To the east of Falsterbohus Club within short distance we find another busy seaport -- Trelleborg. From Trelleborg large passenger boats will take you across the Baltic to the west German hanseatic cities of Travemunde, Sassnitz and Lybeck; cities with much tourist appeal.

Scania is the southernmost province of Sweden. Its history takes you back to the pagan god, Odin. Within an area of approximately 4,000 square miles are located some 220 stately castles and country estates; the majority of which are still owned and maintained by the descendants of the original founders some hundred years ago. Many Viking burial fields and also a geometrical formation of large stones, exactly like Stone Henge in England, provide visible evidence of the long history of Scania. From this area came many of the Vikings that conquered England, Ireland, France and also Sicily, Turkey and Russia. So much for the history and geography of the province where is located one of Scandinavia's oldest and most famous golf clubs, Falsterbohus; named after an ancient castle, the ruins of which can still be seen.

Because of the club's location; at the very tip of a peninsula, on the grounds of Falsterbohus Golf Club, are to be seen, one lighthouse, built 1778, and also a mound marked by a stone with the year 1228. During murky nights, on the mound, charcoal fires were burning, ostensibly to warn seafarers away from the treacherous shoals, or, was it the other way around? Falsterbohus is open all year around. Late summer or fall is a good time to play. The manager, Mr. Malmgren, tall, lean, an officer and cross country runner, is a congenial, accomodating gentleman. In Scania are many more fine golf clubs and statistics show that in Europe only England has more golf clubs than Sweden. Twice the Swedish golf teams have been European champions. This year however, they were beaten by the wily Scotch and placed second. With so much in common it would be well if closer cooperation between Swedish and American golfers could be established.

**Yours truly,
Nels Johnson**



WIPE OUT WEEDS

with Banvel® 4S & Banvel®+2, 4D

HERBICIDES

**The broadleaf weed 'specialists'
designed for professional turf programs.**

Here's why BANVEL® herbicides are the professionals' choice for weed control:

- Used as directed Banvel will not harm trees, ornamentals or turf—it just eliminates weeds.
- No season restrictions. Lay down Banvel from early spring to late fall—all through the growing season.
- Rain will not affect Banvel. It keeps on working because it translocates—penetrates leaves and is absorbed through roots to attack every part of the weed.
- No special spraying equipment necessary. It is easy to clean out of equipment after use.
- Mixes readily with hard or soft water.
- Easily stored through winter months without losing potency.

**Banvel herbicides—products
for professional turf men**



Velsicol

VELSICOL CHEMICAL CORPORATION
341 East Ohio Street
Chicago, Illinois 60611

©Velsicol Chemical Corporation, 1976

COMBATING ANNUAL BLUEGRASS WITH CREEPING BENTGRASS

By Wolfgang Mueller, Supt.

Over 90% of Onwentsia's grasses consist of Bentgrass. This percentage has been achieved during the past six years by the undertaking of a specific program.

Our first step was to install, up to the present, over 12,000 feet of drain-tile, with approximately 6,000 feet to be completed over the next two years. The feeder lines were selected, depending on location, from 6 to 12 inches and the main lines from 15 to 18 inches of perforated, galvanized steel piping. All piping was backfilled with a cover of at least 10 inches of pea gravel.

In conjunction with our extensive drainage program we started an over-seeding project with Seaside, Astoria and Highland Bent. We began the over-seeding program in May, 1972 at the rate of 75 lbs. of seed per acre. The seed mixture consisted of 25 lbs. of Seaside, 25 lbs. of Astoria and 25 lbs. of Highland Bentgrass, all certified seed material. The seeding was accomplished with the use of a McCormick drill seeder. Unfortunately, the overall results of this over-seeding were disappointing. The new seedlings had to compete with the existing Poa Annua and extremely wet ground conditions due to heavy rainfalls. I realized then that timing was the most important factor in this particular over-seeding program.

Our next strategy was to take advantage of the weak conditions of the Poa Annua in the end of July and early August to aerate all our greens, tees and fairways, and over-seed them at the rate of 60 lbs. per acre with certified Seaside Bent only. This time our efforts were rewarded with good germination and strong seedlings.

We repeated the same process in the two following years at the rate of 30 lbs. of certified Seaside Bent per acre, keeping in mind the correct timing, that is, end of July and beginning of August.

The next three years we limited ourselves to aerating the greens, tees and fairways, at the time the Poa Annua is at its weakest (again end of July and beginning of August for our area). It had been our experience that to aerate at any other time would only promote the Poa Annua's reseeding.

In our program we are on a low fertility regime, consisting of approximately 1.2 lbs. of actual Nitrogen for fairways and approximately 2 to 2 1/2 lbs. of actual Nitrogen for greens and tees. We apply approximately 120 lbs. of Potash per acre every other year.

Due to our existing water sources and system our water practices are very limited. Unlikely as it seems, I believe this is a major factor in the success of our bentgrass, since water loving Poa Annua is not able to survive under these conditions. Even during very hot and dry periods we only water our greens and tees once a week. Our fairways are watered every ten days, due to the fact we can only water four fairways a night.

We also are on a preventive fungicide program and spray our fairways approximately four times a season. We spray our greens and tees every second week.

Furthermore, we keep our greens cut a 1/8", the tees are cut at 3/8" and the fairways are cut at 5/9". This height of cut provides good playing conditions and does not allow the Poa Annua to flourish.

I would like to share with you a letter written 50 years ago, that seems to bridge the span of time and methods and fully endorse our less than revolutionary approach to the Poa Annua problem. The letter is addressed to the Bulletin of the United States Golf Association Green Section, Washington D.C., and publish in Vol. 7, Vol. 9.

I quote:

"Gentlemen,

In reference to Poa Annua in putting greens.

We have two greens of bent of the Inverness strain. These two greens have been a great disappointment but have improved as Poa Annua came in.

We have several old greens, seeding in 1921 with the good Lord knows what, but with considerable clover, and these also have improved as regards putting as they have been invaded with Poa Annua.

At present we have six creeping bent greens of a good strain. We will have nine or ten more greens next year of the same strain of bent.

While Poa Annua has improved the putting qualities of the old greens we do not think that they compare with the new greens. Therefore we are fighting out all Poa Annua from the good bent greens.

What we do is cut it out with a hole cutter just as soon as we see it, and replace with a plug from the bent nursery. From thirty to fifty plugs are needed to keep a green clean of Poa Annua, chickenweed, etc., most of the plugs of course being used during the spring and early summer.

Spencer M. Duty
The Canterbury Golf Club

ARTHUR CLESEN INC.

Cleary Turf Chemicals

Country Club & Vertagreen
Fertilizers
Turfgrass Seed

Soil Conditioners — Bark — Mulches

"Easy Markers" & Paints

611 So. Wolf Road

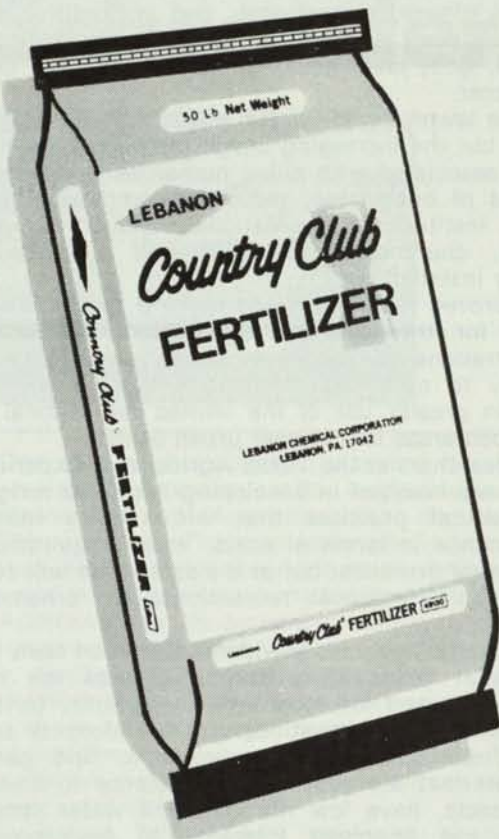
Wheeling, Illinois

(312) 537-2177

SMILE

"It happens in a flash, but the memory of it lasts forever, it cannot be begged, borrowed or stolen, but it is of no earthly good to anyone until it is given away. So if in your hurry you meet someone who is too weary to smile, leave one of yours, for no one needs a smile quite as much as he who has none to give!"

"It takes only 17 muscles to smile ... 43 muscles to frown. Conserve energy."



COUNTRY CLUB

PROFESSIONAL TURF PRODUCTS

GIVE YOU MORE!

- ★ Full Weight (High Density) for easy, fast, full width spread.
- ★ A Complete Feeding in every granule of needed turf-grass nutrients.
- ★ A Balanced Fertilizer Ratio with no inert fillers.
- ★ Available only through a network of trained distributors, thus assuring you of lower sales costs, meaning greater value to you.

For More Information, Contact:

Frank Ross
(312) 323-8633

"SPORTS TURF"

On Nov. 22, 1977 Mr. Oscar L. Miles, Grounds Superintendent at the Broadmoor Country Club in Indianapolis, Indiana, received patent protection (patent no. 4,058,930) from the U.S. Patent & Trademark Office on a natural turf growing apparatus method of containerized turf, composed of a plurality of independent units for use on athletic fields, baseball diamonds, grass tennis courts and driving range golf tees. Each container will have a detachable upper collar overlapping the side walls. When the collar is removed, the individual containers can be abutted together to provide an uninterrupted, fully established, ready to play on real grass surface. Sports Turf, Inc. containers are to be installed on a prepared base of gravel, asphalt or concrete. In the base a system of plastic perforated drainage pipe and a warming system are to be installed. This will provide a frost-free-dry natural turf condition for year round play on real grass.

With this patented method, units of turf damaged from practice sessions or competitive games can be easily and quickly removed with a fork-lift tractor and replaced with identical, healthy spare turf units. On a multi-use stadium field, the dirt infield baseball pallets could be conveniently lifted and replaced with pregrown established natural grass containers, which would allow football or soccer to be played on real turf during the fall and winter. Owners or management of enclosed domed stadiums could once again anticipate using natural turf indoors. Sports Turf could be stored and maintained on a nearby parking lot and brought in as needed. The inventor is

presently forming a full service corporation and seeking individuals or companies that have interests in being licensed installers. The projected construction and installation costs is less than a complete artificial plastic turf system, with the advantages of longer self-rejuvenating life, drier and improved footing, a natural turf grass cushion (less injuries) and in the winter a warm surface to melt snow and absorb rainfall. During the summer, in out-of-doors stadiums, natural turf is much cooler to play upon than synthetic materials. Sports Turf natural grass would help air-condition the atmosphere above the playing field on a hot summer day. The inventor would welcome any inquiries about this new method.

Oscar L. Miles, Pres.
Sports Turf, Inc.
7845 Sunset Lane
Indianapolis, IN 46260
A.C. 317-253-7192

ASPHALT DRIVEWAYS — PARKING LOTS — ETC	
"Golf Course Work a Specialty"	
LEMONT PAVING CO.	
SAND & STONE	
115th & Archer Ave (Rt. 171) - Lemont, Illinois	
RAY MURPHY	257-6701

**SUPPORT YOUR
ADVERTISERS**

BOJO TURF SUPPLY CO.

BoJo

TURF
SUPPLY CO.

ALL MAJOR TURF SUPPLIES

- PAR-EX
- Vertagreen
- Du Pont
- Diamond Shamrock
- Sand Blasters
- Cyclones
- Fore Par

R R 1, Box 52
Peotone, Ill.
312-258-3485

THE SCIENTISTS TELL ME ... TURFGRASSES ADD TO THE QUALITY OF LIFE

The quality of life is improved from the beauty of turfgrasses, particularly when grown in combination with flowers, shrubs, and tree plantings in a total landscape concept.

According to Dr. James B. Beard, turf and crop physiologist with the Texas Agricultural Experiment Station, a more favorable, harmonious environment and improved mental health are important benefits of turfs, particularly to people living in high density urban areas.

Beard suggests seven distinct areas in which turfs make significant functional contributions to the quality of life.

Grass is by far the most effective and least costly method available to stabilize soil against loss by water erosion, whether it be on a roadside, park, lawn, ditch bank, institutional ground, or ski slope.

Dust stabilization value of an established lawn is well known to those who have lived in a newly-constructed house. Wind-blown dust can permeate a house or other building decreasing comfort and increasing cleaning problems.

Heat dissipation is a valuable byproduct of green, actively-growing grasses which release water to the atmosphere by transpiration. This conversion of water from liquid to vapor requires energy and, in effect, cools the leaf surface. This process dissipates heat, and is particularly valuable in urban areas where there are high concentrations of hard surfaces that absorb and radiate heat.

Noise abatement is helped by turfs, plus surrounding tree and shrub vegetation. Properly placed, vegetation can decrease the noise level by 15 to 45 percent at a distance of 30 to 70 feet along intensely-trafficked urban freeways.

Turfgrasses have a low-level, diffuse reflection that causes nominal glare and associated eye discomfort in contrast to relatively smooth surfaces such as snow, sand, and many types of hard surfaces on buildings, streets and sidewalks.

Safety is enhanced by the higher-cut turfs along roadsides which aid in safer emergency stoppage of vehicles. Similarly, turfs on recreational sport fields provide a cushion which reduces the shock and potential injury to players.

Perennial grasses maintained under turf conditions provide low-cost, attractive surfaces for numerous outdoor leisure, recreational, and competitive sport activities such as baseball, croquet, field hockey, football, golf, lawn bowling, lacrosse, rugby, skiing and soccer.

Home lawns represent the major form of turfgrass usage, but the increasing usage throughout the State is also associated with allied human activities on the grounds of businesses, industrial complexes, parks, public institutions, recreational areas, highways, schools, churches, cemeteries, golf courses, and military installations.

"Improved turfgrasses and cultural practices are a 'must' for the future," says Beard. "Continued concentrations of people in urban areas with less mobility to outlying locations and increased time result in greater use of the limited recreational and green-belt areas in and near urban centers.

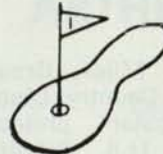
"Researchers at the Texas Agricultural Experiment Station are involved in developing improved turfgrass and cultural practices that will require minimal maintenance in terms of costs, water requirements, and energy demands, but at the same time will retain the valuable functional, recreational, and ornamental benefits.

"St. Augustinegrass is widely utilized on lawn turfs throughout Texas while bermudagrasses are more extensively used for sport and recreational turfs. A collection of St. Augustinegrass selections is being made from throughout the world to find genetic materials that are superior in resistance to diseases and insects, have low nitrogen and water requirements, and improved tolerance to environmental stresses such as drouth, heat, and cold.

PENNCROSS & TORONTO C-15 BENT SOD and

TORONTO C-15

BENT STOLONS



- Pure to Strain
- Maintained at 1/4" mowing height with "Greens King"
- Grown on Sandy Loam Soil
- Toronto C-15 Strain resistant to leafspot

ALSO FEATURING

- XL-100 Bluegrass Blend Sod

"For the Superintendent who
wants the best"

XL-100 is a blend of five bluegrass varieties that were ranked superior in tests conducted at major Midwest Universities.

XL-100 is disease resistant, shade tolerant (60%) and adaptable to close mowing.

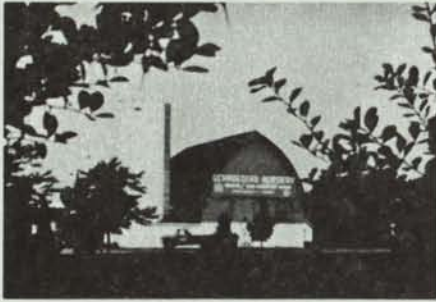


H & E Sod Nursery, Inc.

3900 West 167th Street
Markham, Illinois 60426

312/596-7200

Schroeder's Nursery, Inc.



TREES - EVERGREENS - SHRUBS

Specializing in large Caliper shade trees and Ornaments.
We also offer complete installation service.

TELEPHONE: (312) 546-9444

Arthur E. Schroeder
Richard A. Schroeder
Don Virgens

**GRAYSLAKE, ILL.
Rt. 1 - Box 34-W**

Nursery on Rt. 60 between Rtes. 12 (Volo) and 83 (Ivanhoe)

"One step in this direction was the development and release of Floratam, a St. Augustinegrass with resistance to St. Augustinegrass decline virus (SADV). However, Floratam lacks adequate low temperature hardiness for the northern two-thirds of the state and is not adapted to shaded environments.

"Approximately 25 percent of the turfs in Texas are grown under some degree of partial shade. Thus, emphasis is now being placed on identifying germ plasm having superior low temperature hardiness, shade adaptation, and resistance to such major insect pests as chinch bug and white grub and to the three major disease problems—brown patch, gray leaf spot and SADV."

Dr. Robert Toler, TAES virologist, is handling research on these disease problems. Dr. Michael Gaylor, TAES urban entomologist, is researching problems associated with insect pests.

"Other research is aimed at identifying specific characteristics that are reliable predictors of tolerance to environmental stress such as low temperature kill, drought and turfgrass wear. Cultural requirements of individual grass selections in terms of nitrogen fertility level, water use rate, and mowing frequency also are being studied.

"This step-by-step research moves us closer to the goals of effective turf at minimal cost for satisfying the functional, recreational and aesthetic needs of Texans."

Editor's Note - Any questions regarding this column should be addressed to Science Writer, Dept. of Agricultural Communications, Texas A&M University, College Station, Texas 77843.

By Robert L. Haney
TAES Science Writer

PRECISION BLENDED TOP DRESSING

Custom blended to your specifications
by our modern equipment.

*Buy when you need—
Eliminate costly storage*

We sell an air dried, uniform and
free flowing top dressing.

ASK THE MAN WHO HAS USED IT.

HUMUS - BLACK SOIL

HENRY FRENZER

Area Code 312
658-5303

620 Webster St.
Algonquin, Ill.
60102

ILLINOIS LAWN EQUIPMENT, INC.

SALES, SERVICE AND PARTS HEADQUARTERS FOR

JACOBSEN and CUSHMAN

14750 La Grange Road - Orland Park, Illinois 60462

TELEPHONE: (312) 349-8484

(800) 942-8610
Illinois Wats

(800) 323-7042
Indiana-Michigan Wats