

LABOR-SAVING GRASSES



GLADE KENTUCKY BLUEGRASS

- Does Great in Sun Or 60% Shade
- Excellent Disease Resistance to Powdery Mildew — Stripe-Smut — Leafspot — Rust
- Quick Recovery — Fast Germinating

Adelphi

KENTUCKY BLUEGRASS

- Greens Up Earlier in Spring — Stays Green Longer In Fall
- Great Resistance To Disease

- Low Growing — Tolerates Close Mowing

CITATION

FINE LEAF PERENNIAL RYEGRASS

- Improved Mowing Qualities
- Blends Well With All Other Grasses

- Performs Great In Hot, Humid Areas

FOR MORE DETAILED INFORMATION AND
TEST RESULTS WRITE TO:

the VAUGHAN-JACKLIN corporation

5300 Katrine Avenue, Downers Grove, Illinois 60515, (312) 969-6300

WAREHOUSES LOCATED IN:

Bound Brook, New Jersey • Landover, Maryland • Ovid and Grand Ledge, Michigan • Spokane, Washington

NATIONAL CHEMSEARCH CORP.

222 South Central Ave.
St. Louis, Missouri 63105

A modern mother and her young son were shopping in a supermarket. The child, trying to help, picked up a package and brought it to her. "No, no, honey", protested the mother, "go put it back. You have to cook that."

CHIPCO protects your turf from the world's toughest critic...

The golfer

- Chipco[®] Spot Kleen
- Chipco[®] Microgreen
Liquid
- Chipco[®] Turf Herbicide "D"
- Chipco[®] Spreader
Activator
- Chipco[®] Thiram 75
- Chipco[®] Crab Kleen
- Chipco[®] Turf Herbicide
MCP
- Chipco[®] Buctril[®]
- Chipco[®] Turf Kleen



RHODIA INC. AGRICULTURAL DIVISION
Monmouth Junction, New Jersey 08852

GOLF

"Golf is a form of work made expensive enough for a rich man to enjoy it. It is physical and mental exertion made attractive by the fact that you have to dress for it in a \$1,000,000 clubhouse.

Golf is what letter-carrying, ditch digging and carpet-beating would be if those three tasks had to be performed on the same hot afternoon in short pants and colored socks by gouty looking gentlemen who required a different implement for every mood!

Golf is the simplest looking game in the world when you decide to take it up and the toughest looking after you have been at it 10 to 12 years.

It is probably the only known game a man can play as long as a quarter of a century and then discover that it was too deep for him in the first place.

The game is played on carefully selected grass with little white balls and as many clubs as the player can afford. These balls cost from 75 cents to \$2.50 and it is possible to support a family of 10 people (all adults) for five months on the money represented by the balls lost by some golfers in a single afternoon.

A golf course has 18 holes, 17 of which are unnecessary and put in to make the game harder. A "hole" is a tin cup in the center of a "green". A "green" is a small parcel of grass costing about \$1.98 a blade and usually located between a brook, a couple of apple trees and a lot of "unfinished excavations".

The idea is to get the golf ball from a given point into each of the 18 cups in the fewest strokes and the greatest number of words.

The ball must not be thrown, pushed or carried. It must be propelled by about \$200 worth of curious looking implements especially designed to provoke the owner.

Each implement has a specific purpose and ultimately some golfers get to know what that purpose is. They are the exceptions.

After each hole has been completed the golfer counts his strokes. Then he subtracts six and says, "made that in five. That's one above par. Shall we play for 50 cents on the next hole?"

After the final, or eighteenth hole, the golfer adds up his score and stops when he has reached 87. He then has a swim, a pint of gin, sings "Sweet Adeline" with six or eight other liars and calls it the end of a perfect day."



Times have changed. Does any one know where this picture was taken, and whose idea it was?

PRECISION BLENDED TOP DRESSING

Custom blended to your specifications
by our modern equipment.

*Buy when you need—
Eliminate costly storage*

We sell an air dried, uniform and
free flowing top dressing.

ASK THE MAN WHO HAS USED IT.

HUMUS — BLACK SOIL

HENRY FRENZER

Area Code 312
658-5303

620 Webster St.
Algonquin, Ill.
60102

LET US HELP YOU!

Lakeshore

Equipment & Supply Co.

Bill Schumacher
Crystal Lake, IL
815/455-2284

Office
Elyria, Ohio
216/323-7544

Ross Smith
Villa Park, IL
312/530-2165

MIDWEST FIELD DAY AT PURDUE UNIVERSITY

With the name "Midwest Field Day", you might think that the day was put on for the Midwest Superintendents Association. However, the attendance showed the exact opposite--the lack of Midwest superintendents was a little disappointing. Illinois did have their field day just a week or so earlier, so some of you, I'm sure, felt attending one was sufficient. But, friends, you have missed something if you did not take in one or the other of these field days. The old saying, "Try it, you might like it" might be appropriate. What did surprise me was the attendance of so many commercial people and so-called "peddlers"--the ones we many times try to eliminate with our "holier than thou" attitude. I guess what I am trying to say is--where were all you guys that are so interested in improving yourselves and gaining knowledge?

Dr. Daniel has done a lot of experimenting with many different chemicals, fertilizers, turfgrass varieties, and just about anything else you want to mention. One of the real highlights of the Field Day to me (being an ex-football player and a true fan of the game) was going on the Boilermakers' playing field and seeing the outstanding turf they have established with the PAT System. Mr. M. L. Rober, Superintendent of Athletic Facilities, has worked with this field since April, 1974, and he has done a commendable job.

I have only touched on a few of the high points of the Purdue Field Day and would strongly recommend a visit next year. Also, if you just might have a few extra dollars in your budget, how about supporting the Midwest Regional Turf Foundation, along with our own state university program. They need your support, both monetary and moral.

Mike R. Bavier
Midwest Regional Turf Director

BURDETT'S

TURF
AGRICULTURE
RECREATION

SUPPLIES and CHEMICALS
Swift Road at North Avenue
P. O. Box 186
Lombard, Illinois 60148
(312) 629-1123

Smith Turf Equipment, Inc.

Seed - Fertilizer - Chemicals

Frank D. Smith
President

1421 W. Fullerton Ave.
Addison, Illinois 60101
312/620-8064



2 N 255 County Farm Rd.

West Chicago, Ill. 60185

Phone 668-5537



The annual Mexican open golf event at Briarwood C.C. was as usual a great success, made possible by the club's super, Paul Voykin. The food and refreshments were of the best choice. The two chefs in the picture had the spareribs so delicious, the golf score was not important.

Schroeder's Nursery, Inc.



TREES - EVERGREENS - SHRUBS

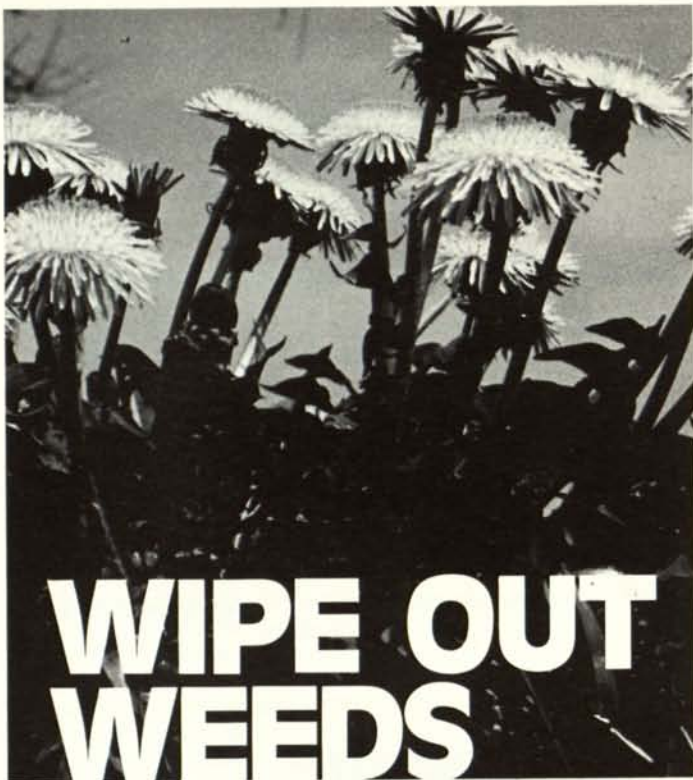
Specializing in large Caliper shade trees and Ornamentals.
We also offer complete installation service.

TELEPHONE: (312) 546-9444

Arthur E. Schroeder
Richard A. Schroeder
Don Virgens

GRAYSLAKE, ILL.
Rt. 1 - Box 34-W

Nursery on Rt. 60 between Rtes. 12 (Volo) and 83 (Ivanhoe)



WIPE OUT WEEDS

with **Banvel® 4S** & **Banvel®+2, 4D**

HERBICIDES

The broadleaf weed 'specialists' designed for professional turf programs.

Here's why BANVEL® herbicides are the professionals' choice for weed control:

- Used as directed Banvel will not harm trees, ornamentals or turf—it just eliminates weeds.
- No season restrictions. Lay down Banvel from early spring to late fall—all through the growing season.
- Rain will not affect Banvel. It keeps on working because it translocates—penetrates leaves and is absorbed through roots to attack every part of the weed.
- No special spraying equipment necessary. It is easy to clean out of equipment after use.
- Mixes readily with hard or soft water.
- Easily stored through winter months without losing potency.



Banvel herbicides—products for professional turf men

Velsicol

VELSICOL CHEMICAL CORPORATION
341 East Ohio Street
Chicago, Illinois 60611

©Velsicol Chemical Corporation, 1976



**TURF
SUPPLY CO.**

ALL MAJOR TURF SUPPLIES

- PAR-EX
- Vertagreen
- Du Pont
- Diamond Shamrock
- Sand Blasters
- Cyclones
- Fore Par

Box 182 — Steger, Ill.
747-0630

Nels J. Johnson, Tree Experts, Inc.

SINCE 1930

Complete, economical tree service for Private Estates, Parks, Municipalities, Golf Courses Cemeteries, Schools, Industrial Areas.

All phases of Arboriculture, Diagnosing, Pruning, Treating, Transplanting, Fertilization, Hydraulic and Mist Spraying, Removals, Stump, Routing, Municipal Forestry.

— FULLY INSURED —

GRADUATE FORESTERS • LICENSED ARBORISTS

MAIN OFFICE: 912 Pitner Avenue, Evanston, Illinois
Phones: GR eenleaf 5-1877 — GR 5-5255
Hinsdale, Illinois — FA 5-0970

- All Major Turf Supplies
- Par-Ex
- Bean Sprayers
- DuPont
- Chipco
- Vertagreen
- Daconil - Dacthal

Quality — Value — Service

PAARLBERG CHEMICALS

172nd & Paxton, So. Holland, Ill.
GR 4-3086 747-0630

FOR THE FINEST IN SOD

THORNTON'S TURF NURSERY

312 - 742-5030

Rt. 2 Box 72

Elgin, Ill.

par ex[®]
PROFESSIONAL PRODUCTS



**slow release
fertilizers
with IBDU**

IBDU
NITROGEN
(31-0-0)
(27-3-9)
(24-4-12)
(24-4-8)
(20-0-16)

DISTRIBUTE THRU

*Turf Products LTD West Chicago
Paarlburg Chemical South Holland
Olsen Distributors Barrington
Vaughan Jacklin Corp. Downers Grove
Turf Management Supply*

SWIFT REP.

*Cliff Helwig
1020 Knoll Dr.
Naperville, Ill. 60540
1-312-420-7444*

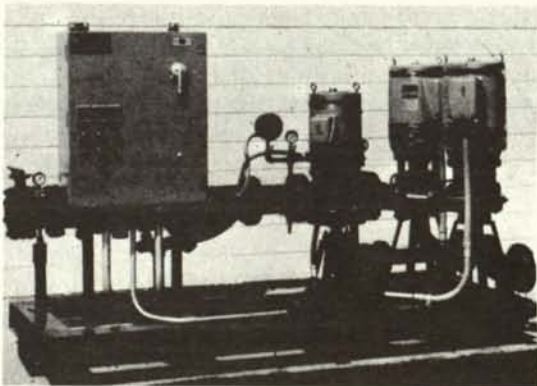
Ryan[®]

**Turf-care
equipment**

DISTRIBUTED BY


George A. Davis, Inc.
5440 Northwest Highway, Chicago, Illinois 60630 312-763-6363

SISCO PRE-FABRICATED PUMPING PLANT



The two main pumps are Cornell 40 h.p. or 50 h.p. units. Total unit capacities range from 750 to 1200 GPM at pressures of 100 p.s.i. to 118 p.s.i. Other ranges available.

Available with either a Cornell 10 h.p. jockey pump (pictured) or a 750 GPM equivalent Well-X-Trol tank.

Standard equipment includes mercoird "Start - Stop" switches, suction and discharge piping, non-slam check valves, "Y" type strainer and a combination pressure regulating and check valve with flow switches and discharge gate valve.

A pre-wired electrical panel (480V, three-phase) includes pump hour meters and a manual operator to alternate the lead pump.

Consult John Olman, your SISCO representative for more specific information and prices.

SPRINKLER IRRIGATION
1738 Armitage Court
Addison, Ill. 60101
312 - 629-7730