

LABOR- SAVING GRASSES



GLADE KENTUCKY BLUEGRASS

- Does Great in Sun Or 60% Shade
- Excellent Disease Resistance to Powdery Mildew — Stripe Smut — Leafspot — Rust
- Quick Recovery — Fast Germinating

Adelphi

KENTUCKY BLUEGRASS

- Low Growing — Tolerates Close Mowing
- Greens Up Earlier in Spring — Stays Green Longer In Fall
- Great Resistance To Disease

CITATION

FINE LEAF PERENNIAL RYEGRASS

- Performs Great In Hot, Humid Areas
- Improved Mowing Qualities
- Blends Well With All Other Grasses

FOR MORE DETAILED INFORMATION AND
TEST RESULTS WRITE TO:

the VAUGHAN-JACKLIN corporation

5300 Katrine Avenue, Downers Grove, Illinois 60515, (312) 969-6300

WAREHOUSES LOCATED IN:

Bound Brook, New Jersey • Landover, Maryland • Ovid and Grand Ledge, Michigan • Spokane, Washington

NATIONAL CHEMSEARCH CORP.

222 South Central Ave.
St. Louis, Missouri 63105

“My wife,” said one, “is very poetic. She gets up at sunrise and says, ‘Lo, the morn!’ ”
“Huh!” said the other, sadly, “Mine says, ‘Mow the lawn!’ ”

Cleary Products for Better Turf

Fungicides

3336 Turf Fungicide

A broad spectrum systemic fungicide that prevents and controls all six major turf diseases.

Bromosan Turf Fungicide

The newest broad spectrum systemic fungicide for those persistent trouble areas.

Caddy

PMAS (10%)

Spotrete

Granular Turf Fungicide

Cad-Trete

Spectro

Herbicides

MCPP

MCPP Plus 2,4-D

Methar 80

Methar 30

AMA Plus 2,4-D

AMA (Super Methar)

Specialties

All Wet

Clear Spray

Tru-Green

Grass-Greenzit

W·A·CLEARY
CORPORATION

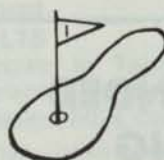
P.O. Box 10, Somerset, N.J. 08873

PENNCROSS

BENT SOD

TORONTO C-15

BENT SOD OR STOLONS



- ★ Pure To Strain
- ★ Maintained at 1/4" mowing height with "Greens King"
- ★ Grown on Sandy Loam Soil
- ★ Toronto C-15 Strain resistant to leafspot.

— BLUEGRASS SOD —

- Adelphi
- Merion
- XL-100 Blend
- KY-33 Blend



H & E Sod Nursery, Inc.

3900 West 167th Street
Markham, Illinois 60426

312 798-2210

EVERYTHING FOR!

RAIN BIRD®

UNDERGROUND IRRIGATION SYSTEMS

FULLY AUTOMATIC WITH MASTER AND SATELLITE CONTROLS

AUTOMATIC GREENS AND TEES · MANUAL FAIRWAYS

MANUAL SYSTEMS OR QUICK COUPLING VALVES

YOUR ONE STOP SOURCE FOR!

PUMPS -- PUMPING STATIONS

PRESSURE TANKS - STRAINERS - PRESSURE RELIEF VALVES

ROLLER BASES - COOLING NOZZLES - HOSE

REPLACEMENT PARTS FOR!

Buckner, Nelson, **RAIN BIRD®** Skinner, Safe-T-Lawn



Century Supply Corp.
3890 W. 11 Mile Rd.
Berkley, Mich. 48072
(313) 543-7730

Rain-Aid Div.
22159 Telegraph Rd.
Southfield, Mich. 48075
(313) 356-9137

Century Rain-Aid Div.
341 Lively Blvd.
Elk Grove Vill., Ill. 60007
(312) 640-6660

PRECISION BLENDED TOP DRESSING

Custom blended to your specifications
by our modern equipment.

*Buy when you need —
Eliminate costly storage*

We sell an air dried, uniform and
free flowing top dressing.

ASK THE MAN WHO HAS USED IT.

HUMUS - BLACK SOIL

HENRY FRENZER

Area Code 312
658-5303

620 Webster St.
Algonquin, Ill.
60102

LET US HELP YOU!

Lakeshore

Equipment & Supply Co.

Bill Schumacher
Crystal Lake, IL
815/455-2284

Office
Elyria, Ohio
216/323-7544

Ross Smith
Villa Park, IL
312/620-0989

Letter to Mr. Art Benson from Roscoe Randell, Extension Specialist in Entomology, Cooperative Extension Service, University of Illinois at Urbana-Champaign (College of Agriculture)

"Enclosed are two reports from Harry Niemczyk at Wooster, Ohio on the control of *Ataenius spretulus* grubs. I still think diazinon and Dylox or Proxol are still the most effective and labeled chemicals.

Maybe we will not have any grubs this summer. See you in a month or two."

AN UPDATE ON THE ATAENIUS BEETLE-GRUB PROBLEM

By Dr. Harry D. Niemczyk, Department of Entomology, Ohio Agricultural Research and Development Center, Wooster, Ohio 44691.

As of September 12, 1975, I have received calls reporting damage by *Ataenius* grubs to *Poa*-bentgrass fairways from the following locations: Toronto, Canada; Michigan (Detroit, Gull Lake); Illinois (Chicago, Belleville); Indiana (Indianapolis); Kentucky; West Virginia (Parkersburg) Ohiocincinnati, Dayton, Cleveland, Elyria, Toledo, Columbus; New Jersey (Managuan); New Hampshire; New York (Poughkeepsie, Long Island, Manhasset); Connecticut (New Haven, Watertown); Washington D.C; and Maryland.

In Cincinnati, one course experienced severe damage to fairways of primarily bentgrass, from larvae of the second generation. Grub populations on this course averaged 300 per square foot. Fortunately, this is the only course that reported severe damage from the second generation.

In a recent telephone conversation, Dr. Dennis Dunbar, entomologist at the Connecticut Agricultural Experiment Station, told me of one golf course in Connecticut that lost 16 greens from damage by *Ataenius* grubs. The symptoms looked similar to dollar spot but examination of the soil under the damaged areas revealed large numbers of *Ataenius* grubs. I have had no reports of severe damage to greens in Ohio. However, keep a watchful eye out for spots that wilt in spite of irrigation. If seen, cut into the green to check for the small grubs. Call me if you have any questions.

Chemical control experiments were conducted at various golf courses in Cincinnati this spring. Results from these experiments will be reported later this year. The primary problem is thatch restricting the movement of the insecticide to the grubs. Also

resistance to the cyclodiene insecticides (aldrin, dieldrin, heptachlor, chlordane) has been confirmed by lab-tests at O.A.R.D.C. Most beetles are resistant, so don't expect the above insecticides to control the pest.

Weekly observations on the life history of the insect are being made at Cincinnati and Cleveland. Another more extensive research program is being planned for both of these areas in 1976.

FAIRWAY APPLICATION OF DYLOX AND DASANIT FOR CONTROL OF FIRST GENERATION ATAENIUS GRUB RESISTANT TO CYCLODIENE INSECTICIDES - 1975.

By Dr. Harry D. Niemczyk, Professor of Entomology, Ohio Agricultural Research and Development Center, Wooster, Ohio 44691

METHODS

The insecticides diazinon, fensulfothion (Dasanit) and trichlorfon (Dylox or Proxol) were applied to the golf course fairways of 2 country clubs in Cincinnati to control damaging populations of *Ataenius spretulus* (Hald.) grubs. The treatments were applied by the golf course superintendent using a mist blower sprayer (June 17-19, Western Hills Country Club), or boom sprayer (June 20-22, Hyde Park Country Club), for the liquids and a Gandy drop-spreader for the granules. The fairways were irrigated before and after treatment at Hyde Park Country Club and only after at Western Hills Country Club.

One or two days prior to treatment, the larval population on selected test fairway was measured by taking samples 4.25 inches in diameter from infested sections. Similar samples were taken 10-14 days after treatment.

RESULTS

As shown in Table 1, results with Dasanit were consistently excellent. Some kill of robins was noted at Western Hills Country Club.

Diazinon gave generally fair control, and Dylox variable results - i.e. 90-27% reduction. The reasons for such variable results are now being investigated.

- 1) The paper reports the results of research only. Mention of a pesticide does not constitute or imply a recommendation by the OARDC or the author.

Schroeder's Nursery, Inc.



TREES - EVERGREENS - SHRUBS

Specializing in large Caliper shade trees and Ornamentals.
We also offer complete installation service.

TELEPHONE: (312) 546-9444

Arthur E. Schroeder
Richard A. Schroeder
Don Virgens

GRAYSLAKE, ILL.
Rt. 1 - Box 34-W

Nursery on Rt. 60 between Rtes. 12 (Volo) and 83 (Ivanhoe)

CHICAGO DISTRICT GOLF ASSOCIATION MEETING WITH THE GOLF COURSE SUPERINTENDENTS.

SUBJECT:

WHAT THE GOLF COURSE SUPERINTENDENT EXPECTS FROM THE GREEN CHAIRMAN.

By: R. M. Williams, Bob O'Link Golf Club

Carol McCue reports over 230 in attendance today. (March 25, 1976).

This kind of response by all of you is one more evidence of the tremendous job CDGA has been doing for many years in coordinating the golfing interests in the Chicago area.

Superintendents have been fortunate in having men like Chuck Eckstein, Ralph Peterson and Don Johnson heading up The CDGA Green Committees over many years.

I am sure I speak on behalf of all superintendents in saying thanks to CDGA for recognizing and including us in the Chicago area golf family.

My assignment this morning deals primarily with the relationship between the Golf Course Superintendent, the Green Committee and the Board of Governors.

To better understand what is expected of Board and Committee members, we must first briefly look at their respective responsibilities.

Under usual procedure, the Board of a private club is charged with carrying out the conventional corporate responsibilities. In simple terms, "Running the club".

The Board must be responsive to the members desires.---They must control the club's finances.---The Board pretty well determines the "Tempo" for the total club operation in the following ways:

By--Establishing a table of organization with definite lines of chain of command.

By--Setting policy.

By--Establishing Standard Operating Procedure.

By--Giving direction.

By--Describing club objectives.

By--Delegating responsibility and authority to functional committees. And by establishing continuity for club operations in view of the constant change of personnel on the Board.

NOW FOR THE GREEN COMMITTEE:

Normally, individual members of the Board are assigned to the duties as chairmen of the major functional committees. (Golf, House and Greens.).

These committees in turn, delegate their areas of responsibility to professional management employees who must work together as a management team. The Golf Professional, Clubhouse Manager and Green Superintendent, otherwise known as the Triumvirate, form of club management.

DUTIES OF THE GREENS COMMITTEE:

--Most importantly, The Committee is charged with the responsibility of the employment of the Golf Course Superintendent. The physical area of concern varies but generally includes all club property outside of the clubhouse buildings.---Responsibility and authority for the maintenance of the golf course must be delegated completely to the superintendent. The committee should constantly engage in liaison between the membership, the Board and the Superintendent. The committee should set department objectives that conform to the overall club objectives.

--The committee should offer guidance and direction for the superintendent.---The committee and the Superintendent together should develop Long Range Plans on a 5, 10 or 15 year basis. Include items of course architecture, landscaping, structures, irrigation, drainage, etc.---The superintendent should prepare an annual budget which the committee can approve and recommend to the Board.---The Committee should insist on having permanent records relative to the course operation. Examples, property survey, plans of the irrigation system, drainage system, equipment inventory, etc. Copies of these records should be kept in both the club files and the superintendent's files. (So much for the committee.)

In spite of all the years of experience and insight, clubs are still making mistakes and running into management problems. Let me touch on some of the more important ones.---For starters, let's mention the selection of Green Committee members.---My idea of the most appropriate prerequisites include the following: A committee member should have, (1) interest and desire for participation.---Improve the club; improve the course. (2) Executive ability--generally non-professional--some exceptions. (3) People of varied golfing ability---Low, medium, high, handicaps. (4) Special interests, or expertise ---Opposition or minority labor, people oriented; Landscape construction. Also, members who are good communicators for liaison to membership.

The Board member prerequisites are pretty much the same.

A little sidelite here while we are talking about the Board and the Green Committee. I'd like to touch on the point of sobriety at their meetings. A Board or Committee meeting held in the evening after golf and cocktails frequently spells disaster, with little accomplished. It is difficult to maintain order and disagreements easily develop. The answer from my experience and observation, seems to be the Saturday morning breakfast meeting. At this time, everyone is anxious to keep discussion minimal, to keep on track with subject matter, and to get out on the course as soon as possible.

Another problem area: Many country clubs fail to take full advantage of expertise, knowledge and experience of their superintendents, (as well as the clubhouse managers and professionals in their decision making. The pros, managers and superintendents should all be invited to attend Board meetings as experts in their fields, to advise where needed and appropriate. (At least for that portion of the meeting dealing within their respective areas.)

Another problem area: Maintaining an adequate and efficient staff of employees in view of the working conditions with low salary levels, long hours, seasonal work, and lack of generally accepted fringe benefits. In this matter, the management team must share some of the responsibility for the problem. Some clubs have done honorably while many lag behind. For example, Carol tells me that only 41 out of 140 CDGA clubs are using the CDGA Life, Health and Hospitalization Insurance plan. That's 30%. No doubt, some clubs have other plans, but many still have none.---An alarming number of clubs are still without Retirement plans. Yet these clubs can come up with 50 to \$100,000 for charity on short notice, or perhaps 50 to \$75,000 for a calcutta pool.---Uniforms, vacations and paid holidays are additional fringe benefits clubs are going to have to consider in order to keep competitive with industry and business in the labor market. Thank goodness we've avoided the unions

thus far, but let us not leave the door wide open for the future. It is up to the professionals, managers and superintendents to recommend improvement for their respective personnel.--It is up to club officials to follow thru.

More problems: When responsibility is delegated to a superintendent, such as the decision on closing the course, no cards or Summer Rules, the Committee and the Board should back up and defend his decision. On occasion, the vocal minority members have been known to make life miserable for all concerned, with the result of reversing the decision. This breaks a smooth chain of command into fragments and is terribly discouraging to the superintendent and frustrating to officials.

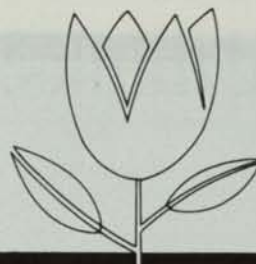
Still another problem: Employee rules and privileges, relative to use of the pool, tennis and golf course facilities. Most club directories devote several pages to rules and regulations governing members and guests. Yet relatively few clubs display a list of the privileges and rules affecting the employees. Frequently, we see a different set of rules for different departments. Coordination at the management level in establishing uniform rules and privileges, with Board approval, helps towards employee satisfaction with fair and equitable treatment.

The problem of interpreting club objectives: Very few clubs have actually taken the time to spell out exactly what their club objectives really are. Superintendents have a continuing problem of interpreting just what standard of maintenance the club wants, and is willing to pay for. If the Board of Governors will establish club goals or objectives, then the Green Committee and the superintendent can set up department objectives that will coincide. Club objectives are so varied today. We have real estate developments, we have profit making clubs, we have non-profit social clubs, Tourism clubs, Business clubs, etc., etc. Actually the club and department objectives should be on written record. (Example of Bob O'Link Budget Foreword.)

Another point for discussion: Chain-of-Command, and channels-of-Communication.--It is most important that club operations and management keep the chain of command intact. Department personnel must function completely under the direction of the superintendent. By the same token, the superintendent must react only to the direction of the Green Chairman.--In a general way, we could say that communication in club operations usually follow a pattern of recommendations moving upward through channels to the Board with decisions and direction moving back down.

A last final point: General Managers versus Triumvirate Management. Golf Professionals, clubhouse managers and superintendents are all concerned about the many ramifications involved. It is a very controversial question. However, I believe this meeting today could get off onto a tangent if we were to direct ourselves to this subject. I suggest to the CDGA that we schedule a club management seminar for complete discussion of the subject. At that time, all sides of the question should be presented by representatives from the professionals, club managers, superintendents and club officers.

In spite of many still unsolved problems relative to club operation, most of us still find our profession a real labor of love. We are indeed grateful to be working in pleasant surroundings, with appreciative members who need a bit of recreation in their lives. The golf business has to be one of the greatest.



*April showers
May flowers
and a lot of
fungal activity*

**start spring disease control NOW
with TUCO Acti-dione TGF®**



The same conditions that promote spring growth can open the door to leafspot, dollarspot and melting-out. Start right after first mowing to apply Acti-dione TGF regularly. See us for help in spring disease control.

DON MASKE

AGRICULTURAL CHEMICAL SALES REPRESENTATIVE
HOME: 924 PUTNAM DRIVE, LOCKPORT, ILLINOIS 60441
815/838-8184

DIVISION OF THE UPJOHN COMPANY

Nels J. Johnson, Tree Experts, Inc.

SINCE 1930

Complete, economical tree service for Private Estates, Parks, Municipalities, Golf Courses Cemeteries, Schools, Industrial Areas.

All phases of Arboriculture, Diagnosing, Pruning, Treating, Transplanting, Fertilization, Hydraulic and Mist Spraying, Removals, Stump, Routing, Municipal Forestry.

— FULLY INSURED —

GRADUATE FORESTERS • LICENSED ARBORISTS

MAIN OFFICE: 912 Pitner Avenue, Evanston, Illinois

Phones: GR eenleaf 5-1877 — GR 5-5255

Hinsdale, Illinois — FA 5-0970

- All Major Turf Supplies
- Par-Ex
- Bean Sprayers
- DuPont
- Chipco
- Vertagreen
- Daconil - Dacthal

Quality — Value — Service

PAARLBERG CHEMICALS

172nd & Paxton, So. Holland, Ill.

GR 4-3086

747-0630

Northrup King thinks:

quality turfgrasses ought to hang tough!

Today you need turfgrass that can thrive with as little maintenance as possible. So Northrup King offers seed for grass varieties that are both beautiful and tough.

Aquila Kentucky Bluegrass persists under low to moderate fertilization, and it requires less moisture to maintain its dark green color. These attributes distinguish Aquila from other bluegrass varieties.

Parade Kentucky Bluegrass is extremely fast-starting and develops a tough sod quickly. It is truly a vigorous variety that can take traffic and come back fast from injury.

For information on these and other outstanding turfgrasses, contact your Northrup King representative.



NORTHROP, KING & CO.
BOX 959 • MINNEAPOLIS, MINNESOTA 55440



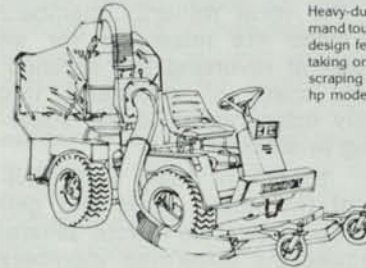
Smith Turf Equipment, Inc.

1421 W. Fullerton Ave. • Addison, Ill. 60101

The grounds crew that works for you!

Hesston Front Runner®

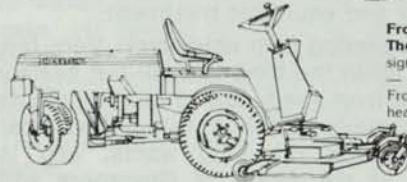
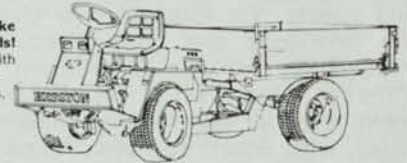
Choose the GMT, Turf Truck or Three Wheeler.
All offer proven performance and all-season versatility.



Heavy-duty grounds maintenance chores demand tough, versatile equipment with advanced design features. And Front Runner fills the bill, taking on mowing, vacuuming, snow removal, scraping and more with a choice of 19.8 or 23 hp models.

Front Runner GMT. The original revolution in grounds maintenance. Articulated steering with center pivot lets you make short turns, mow flush around trees and shrubs and trim tight around buildings.

Front Runner Turf Truck. Take it away! Up to 1000 pounds! Now, a tough little hauler with added versatility. With a choice of quick-change attachments, the Turf Truck performs year-round chores with Front Runner efficiency.



Front Runner Three Wheeler. The new look in value. Clean design, stability and operator comfort — now in a three-wheel machine. Front-wheel hydrostatic drive and heavy-duty rack and pinion steering provide excellent stability and maneuverability.

See us today for the complete Front Runner story and a demonstration.



Smith Turf
Equipment, Inc.

1421 W. Fullerton Ave. • Addison, Ill. 60101

Phone: (312) 620-8064



TURF
SUPPLY CO.

ALL MAJOR TURF SUPPLIES

- PAR-EX
- Vertagreen
- Du Pont
- Diamond Shamrock
- Sand Blasters
- Cyclones
- Fore Par

Box 182 — Steger, Ill.
747-0630

**SUPPORT YOUR
ADVERTISERS**

Nutrient deficiencies, weeds, diseases, thin turf, insects.

For the superintendent
who has everything . . . or
anything . . . or who just wants
to make a good thing better . . .
ProTurf offers research tested,
golf course proven professional
turf products.

Just give me a call.



A division of
O. M. Scott & Sons

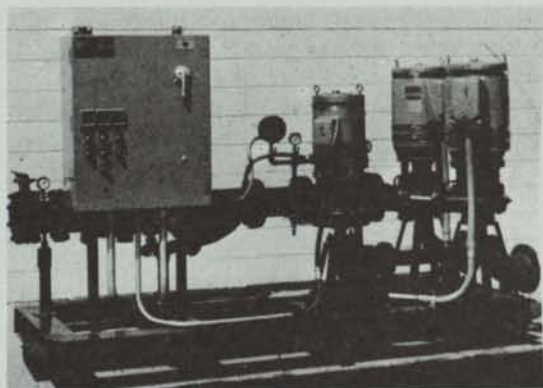
Bill Brazeau
3 Willowcourt
Bolingbrook, Ill. 60439
Ph: 312 - 739-7077

Jerry O'Donnell
Rt. 2 - S. Hill Road
DeForest, Wis. 53532
Ph: 608-846-3629

Bill Keneipp
1785 Hinsdale Dr.
Decatur, Ill 62526
Ph: 217 - 877-5929



SISCO PRE-FABRICATED PUMPING PLANT



The two main pumps are Cornell 40 h.p. or 50 h.p. units. Total unit capacities range from 750 to 1200 GPM at pressures of 100 p.s.i. to 118 p.s.i. Other ranges available.

Available with either a Cornell 10 h.p. jockey pump (pictured) or a 750 GPM equivalent Well-X-Trol tank.

Standard equipment includes mercoird "Start - Stop" switches, suction and discharge piping, non-slam check valves, "Y" type strainer and a combination pressure regulating and check valve with flow switches and discharge gate valve.

A pre-wired electrical panel (480V, three-phase) includes pump hour meters and a manual operator to alternate the lead pump.

SPRING SPRINKLER SPECIAL —

Trade in your Rainbird, Buckner, Skinner sprinklers and get a trade-in **DISCOUNT** on the new 1976 model sprinklers. Call Paul Bando for details.

SPRINKLER IRRIGATION

1738 Armitage Court
Addison, Ill. 60101
312 - 629-7730