

THE BULL SHEET, official publication of the
MIDWEST ASSOCIATION OF GOLF COURSE
SUPERINTENDENTS.

Editor — Ray Gerber
865 Hillside Ave.
Glen Ellyn, Ill. 60137
Phone — 469-6467

Associate Editor — Robert Williams
90 East Franklin, Apt. 208
Lake Forest, Ill. 60045
Office Phone — 432-0088



Fred Opperman — President.

The President's Message

MAGCS BOARD OF DIRECTORS FOR 1976

OFFICERS

President — Fred Opperman, C.G.C.S.
First Vice President - Carl Hopphan
Second Vice President — Carl Grassl, C.G.C.S.
Secretary-Treasurer — Joe Grenko

DIRECTORS

Ed Fischer	Bruce Burchfield
Peter Voykin	David Meyer
Clifford Behrendt	Mike Bavier
Executive Secretary — Dorothy Carey	

The following is a list of office telephone numbers to the entire Board.

Mike Bavier, CGCS - Emeritus	358-7030
Clifford Behrendt	(815) 459-8570
Bruce Burchfield	438-2603
Dorothy Carey	349-7766
Ed Fischer	654-2211
Carl Grassl, CGCS	823-8682
Joe Grenko	634-0100
Carl Hopphan	892-3600
Dave Meyer	529-4303
Fred Opperman, CGCS	469-6220
Peter Voykin	798-4927

Did you ever ask yourself just why you are a Golf Course Superintendent? What makes you work seven days a week from early April thru mid October, with hours ranging from daybreak to dusk and sometimes till even late at night in a muddy hole to repair that irrigation leak, and then having to work Sundays, Easter, Memorial Day (both of them since we seem to be having double holidays for the same day the past couple of years here in Illinois), July 4th and Labor Day (appropriately named, for we labor on that day, too). Then we get the "Holidays" that land on a Monday or a Friday and that's a "long weekend". It certainly is for the Superintendent and his crew, for we have twice as much work to be done in half the time. Then you can go on and describe the onslaughts of the various types of weather that make the job difficult, the diseases, the new and strange insects and pests popping up, no pensions, and the new green chairman or club official who understands none of the above. Why in heavens be a Golf Course Superintendent???

Why? Because even with all of the above problems it's a fantastic job. All of the above problems can be solved and modified to some degree to make life enjoyable. If it wasn't so you would see a much greater turn-over of Superintendents leaving the profession. That, you don't see. We have a very unique profession in my opinion. We are builders and creators. I get great satisfaction in seeing something materialize, grow and develop, whether it be a long range plan for an irrigation system, a new tee, or a planting on the golf course. We are responsible for it being and seeing that the idea is carried out and accomplished.

Our profession is a wonderful profession. We work with the best that nature has to provide. We feel the wind at our backs and the sun in our faces. We see the first flight of migrating ducks and geese heading north. We see the first blooms of the year. We see the first buds of the maple trees that burst forth into beautiful flowers. And who can forget the aroma of the first mowing in spring.

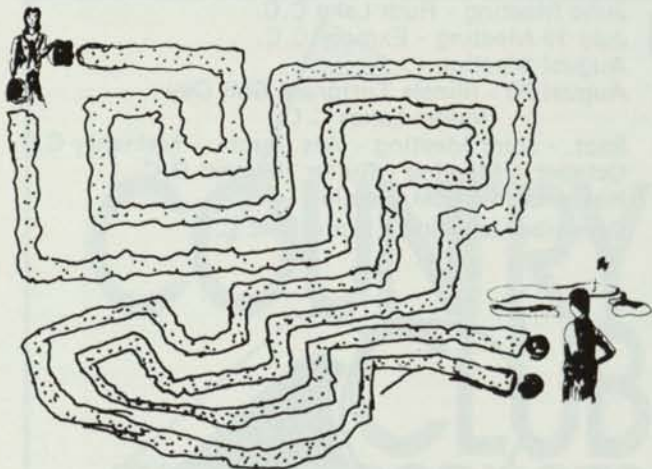
Yes, we work long hours and many days during the season, but we are compensated in many ways that other professions couldn't touch in a thousand years. I love it!

Mrs. Grass "L"
846 N. Fairview Avenue
Park Ridge, Ill. 60068

Hi ladies - hope you noticed last month's vacancy from the Mrs. Grass "L" corner, because I sure did. Needless to say, with all the support I'm getting I sure couldn't help out a pair of varicose veins. But as I ponder the thought of giving up, an old saying comes into view. I asked, "Why doesn't somebody do something"? Then I realized I was somebody!

I sure could use some material for publication. Have a minute, want to make someone feel wanted, send me a card or letter. One of our Supt. wives, Nita Lamkey, brought up a nice idea while over a comfortable dinner at the husband wife get-together at the Marriott Lincolnshire. I believe our conversation got off to a good start after Regina Byrne came back to our table without her lovely orchid, after visiting the ladies room. Although Regina held me to secrecy, as to the reasons for her loss, I can share this with you; "her flowering bud will never urine for the lack of water". Oh yes girls, Nita's idea was a luncheon for us. If the boys enjoy it, so should we. So any wife interested, write or call; it will be Wednesday, June 23rd. Love to see you all. Phone: 698-3637. Hope Linda and Keith Fuchs are getting back on their feet, we wish you both the best.

See you fine ladies next month, but in the mean time, send me a poem, joke, recipe or a drawing. Thought: Any women who thinks the way to a man's heart is through his stomach, shouldn't operate. Bye! Bye!



Where could my Supt. husband be? Won't you readers please help locate him.

ASPHALT DRIVEWAYS — PARKING LOTS — ETC.
"Golf Course Work a Specialty"

LEMONT PAVING CO.

SAND & STONE

115th & Archer Ave. (Rt. 171) - Lemont, Illinois

RAY MURPHY

257-6701

C. E. DAUGHERTY CO.
1855 W. Stuart Ln.
Palatine, Illinois 60067
(312) 359-0602

Representing:

MITTS & MERRILL — Brush and Limb
Chipper

AQUASHADE INC. — Pond Beautifier

COURSIGNS INC. — Golf Course Signs -
Trap Rakes - Litter
Receptacles

CARRON NET CO. INC. — Tennis Nets -
Wind Screens
- Dividers -
Straps &
Tapes

POLLARD BROS. — Work Benches -
Cabinets, Barrell
Stands

LOFT-KELLOGG — Grass Seeds

Warren's bring you . . .

Not One . . . But Two

of the finest Kentucky Bluegrasses for
TEES — FAIRWAYS — COLLARS

Warren's® A-20

SOD AND SOD PLUGS
Rated First in Disease Resistance!

Warren's® A-34

SOD, SOD PLUGS & SEED
Rated First in Shade Tolerance yet
Grows Vigorously in Full Sunlight!

CREEPING BENTGRASS

SOD — Cohansey C-7 and Penncross
STOLONS — Toronto C-15 and Cohansey C-7

Write for a list of Golf Courses now using these Top Rated grasses!

Warren's
TURF NURSERY
INCORPORATED

8400 West 111th Street
Palos Park, Illinois 60464
Phone: 312/974-3000



BURDETT'S
INC.

TURF
AGRICULTURE
RECREATION

SUPPLIES and CHEMICALS
Swift Road at North Avenue
P. O. Box 186
Lombard, Illinois 60148
(312) 629-1123



The M.A.G.C.S. Monday, June 21 meeting will be held at Ruth Lake Country Club, Hinsdale, Illinois. Ruth Lake Country Club is located at 6200 South Madison. Lester Mach, Superintendent, will be our host.



The Editor and Frank Dinelli did a little fishing. Frank was the better of the two, and has the fish to prove it. The big ones did not all get away.

ROSEMAN

2620 CRAWFORD AVE. 864-1842
EVANSTON, ILLINOIS

TURF EQUIPMENT HEADQUARTERS

ROSEMAN GANG MOWERS	FORD TRACTORS
TILLER RAKES	DEDOES AERIFIER
SNOW PLOWS	LOADERS
SEEDERS	LEAF MULCHERS
ROTO TILLERS	ROTARY MOWERS
HOMELITE CHAIN SAWS	HOMELITE PUMPS

SALES ● SERVICE ● PARTS ● RENTALS

America's foremost
golf course
turf fertilizer



Distributed by


George A. Davis, Inc.
5440 Northwest Highway, Chicago, Illinois 60630 312-763-6363

June Meeting - Ruth Lake C.C.
July 19 Meeting - Exmoor C.C.
August Meeting -
August 23 - Illinois Turfgrass Golf Day -
Indian Lakes C.C.
Sept. - Joint Meeting - Wis. Supts. - McHenry C.C.
October 4 Meeting - Butler National G.C.
November Annual Meeting -
December Meeting - Butterfield C.C.



2 N 255 County Farm Rd. West Chicago, Ill. 60185
Phone 668-5537

Mr. Ray Gerber, Editor
The Bull Sheet

Dear Ray:

While in the hospital recovering from surgery, I read over your April issue of **The Bull Sheet**. It's always a joy to read the news about the Midwest and the doings of all our good friends in the area. Thank you for sending me a copy of your excellent publication. It is very well done and having had something to do with publications now and then, I know well how much effort it takes. Your devotion to **The Bull Sheet** has continued to make it one of the best.

Thank you also for the good word on our staff in the "Editor Says" feature. Bill, Carl, Monty and I appreciate this very much.

As you know, one of your members appeared on our USGA Green Section Educational Conference Program in January '76. Paul Voykin did an excellent job of presenting the topic "Overgrooming is Overspending." There was much favorable comment then and subsequent to his talk. Many in attendance expressed the opinion that our last conference was the best in several years and I'm pleased to tell you that Paul's address certainly played a prominent role in making this a reality.

With best personal regards and keep up the fine work!

Sincerely, ALEXANDER M. RADKO,
National Director
United States Golf Association- Green Section
Eastern Region (Highland Park, New Jersey)



Ryan®

Turf-care equipment

DISTRIBUTED BY



George A. Davis, Inc.
5440 Northwest Highway, Chicago, Illinois 60630 312-763-6363



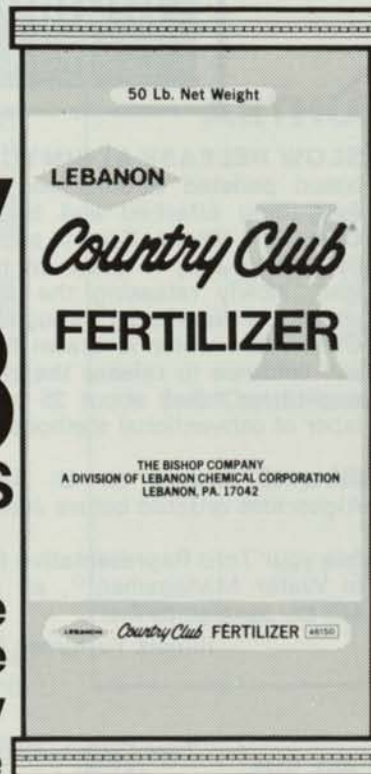
COUNTRY CLUB

TURF PRODUCTS

**A New Outside
Appearance - Same
Dependable Quality
Inside**



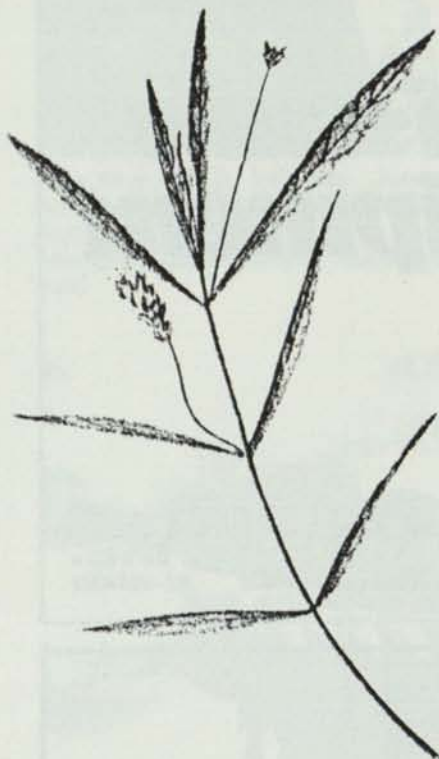
Good Names To
Grow By



Call your local distributor or
Frank Ross
29 Spring Lake Ave.
Hinsdale, IL 60521

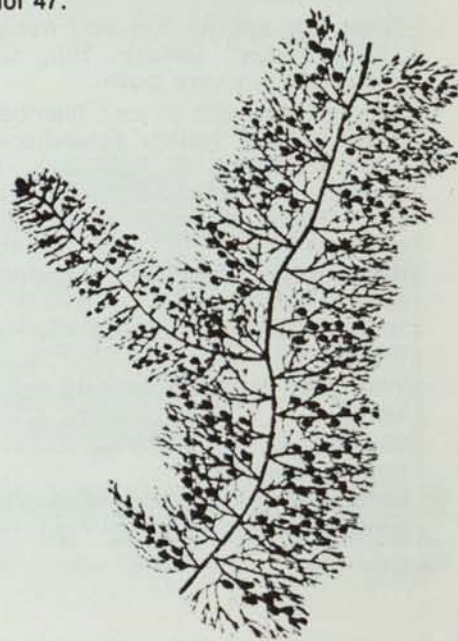
AQUATIC PROBLEMS? — WE HAVE THE ANSWERS

AQUATHOL® PLUS (liquid or granular) contains endothall and silvex. Will control most aquatic weeds both submersed and emerged. Chara and algae are not controlled. Aquathol Plus is most economical for large lake treatments on an over-all or marginal basis. **Aquathol Plus Granular** is recommended for spot treatments. No injury is experienced when turf is watered immediately upon application of Aquathol Plus, Aquathol K, or Hydrothol 47.



CUTRINE-PLUS

Controls algae
in potable water
reservoirs; farm, fish and
fire ponds; lakes and
fish hatcheries



SLOW RELEASE

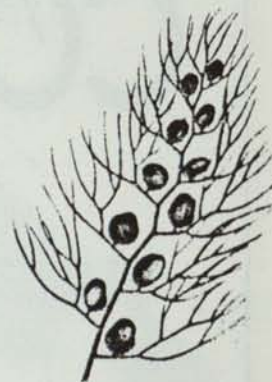
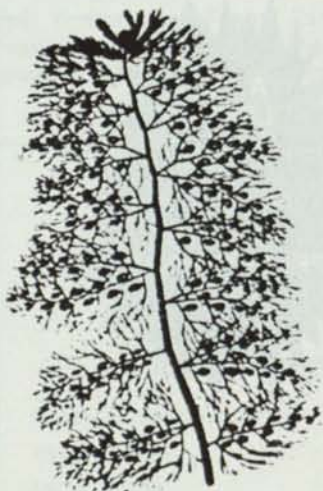
Algimycin
PLL-C

SLOW RELEASE ALGIMYCIN® PLL-C is a copper based **pelleted formulation** particularly effective in controlling attached and branched algae especially **Chara** and **Nitella**. Easy to apply, using a hand scoop, the pellets stay in place on the bed of the pond or lake, slowly releasing the algae control chemicals which are distributed throughout by natural currents. Even when water is drawn for irrigation the pellets will continue to release the chemicals effectively. Its application takes about 25 percent of the time and labor of conventional methods.

Save 15 percent on all Aquatic Herbicides and Algaecides ordered before June 30, 1976.

See your Toro Representative for a copy of, "A Guide to Water Management", all profits from this book will be donated to the:

Illinois Turfgrass Foundation



TORO

Toro Distributing-Chicago
731 District Drive
Itasca, Illinois 60143
(312) 773-2110

TORO

ILLINOIS TURFGRASS FOUNDATION, INC.

Turfgrass is very important in our everyday life. We commonly appreciate it for its' aesthetic values - highway road sides, parks, cemeteries, home lawns, golf courses and general landscaping. However, few people know that the oxygen produced by the grass plant is very important. An area of turfgrass 25 feet by 25 feet (625 square feet) can produce enough oxygen to support the lives of four people. An average golf course (130 acres) can produce enough oxygen for 36,400 people.

The Illinois Turfgrass Foundation is a non-profit organization that was formed to initiate and carry on research in the culture and maintenance of turfgrass. The University of Illinois has conducted this research program that has been funded by an annual allocation from the Legislature of the State of Illinois, the subscription of memberships, grants from private industry and a few donations.

Therefore, in an effort to raise sufficient funds to support turfgrass research at the University of Illinois, the Illinois Turfgrass Foundation will be sponsoring a golf day on August 23, 1976 at the Indian Lakes Country Club, 232 West Schick Road, Bloomingdale, Illinois. Tickets will be sold for \$30.00 per person and will include golf, golf cars, hors d'oeuvres, dinner and an opportunity to win many prizes. Additional contributions will be significantly appreciated. The donor of each \$100.00 will receive an additional free ticket. Additional information may be obtained from your golf course superintendent or the golf day chairman, Richard Lamkey, 676-2660.

We hope that everyone will be able to participate in this event. Today, more than ever, because maintenance costs have increased substantially and turfgrass areas are being used extensively, it is our responsibility to acquire as much knowledge as possible. Your acknowledgement of and donation to the Illinois Turfgrass Foundation will contribute to the product of our efforts.

We hope that you will make every effort to support this important research program. The excellent condition of our turfgrass areas and the development of many improved strains of grass are the results of research. Your participation is very necessary for this program to continue.

Ray Gerber
Chairman, Publicity

letter received

Joseph J. Grenko
Midwest Assoc. of Golf Course Superintendents
PO Box 413
Lake Villa, Illinois

Dear Joe:

Please extend to the Board of Directors of the M.A.G.C.S. my pleasure and appreciation upon being extended membership in your fine group.

Be assured that I shall take every possible opportunity to participate.

Many thanks and best wishes for a cool, moist summer.

Cordially,
KENYON T. PAYNE, Professor
Michigan State University

par ex[®]

PROFESSIONAL PRODUCTS



**slow release
fertilizers
with IBDU**

**IBDU
NITROGEN**
(31-0-0)
(27-3-9)
(24-4-12)
(24-4-8)
(20-0-16)

DISTRIBUTE THRU

<i>Turf Products LTD</i>	<i>West Chicago</i>
<i>Paarburg Chemical</i>	<i>South Holland</i>
<i>Olsen Distributors</i>	<i>Barrington</i>
<i>Vaughan Jacklin Corp.</i>	<i>Downers Grove</i>

SWIFT REP.
Cliff Helwig
1020 Knoll Dr.
Naperville, Ill. 60540
1-312-420-7444

ARTHUR CLESEN INC.

Turf Chemicals

Country Club & Vertagreen
Fertilizers
Turfgrass Seed

Soil Conditioners — Bark — Mulches

"Easy Markers" & Paints

611 So. Wolf Road
Wheeling, Illinois (312) 537-2177

FOR THE FINEST IN SOD

THORNTON'S TURF NURSERY

312 - 742-5030

Rt. 2 Box 72 Elgin, Ill.



Editor

MIDWEST BREEZES

Summer has arrived. Certain M.A.G.C.S. members that take southern exposure for the winter months have arrived back home to join their northern friends. Paul and Ruth Burdett, Oscar and Helen Borgmeier and Mr. and Mrs. Joe Graffis are displaying their bronze look.

Walter Fuchs Sr. has been admitted to the hospital in Skokie, Illinois. Keith Fuchs has also been under the care of a doctor. Mrs. Keith Fuchs has also been admitted to a hospital in Naperville. We all wish you a speedy recovery and the best of health from here on.

The ladies news items have evidently lost their channel for information. Think nothing of it, Mrs. Grassl, the editor has had the same experience. Do not give up, we all appreciate your effort. Remember - where there is a will there is a way. -- Sorry about your "Digest of Interest and Facts" which appeared in the May issue ...your name was added but got lost somewhere in the shuffle.

THE BULL SHEET as of this issue is in its 30th year. Although it has had several editors, there has been only one printer -- EVER-REDI PRINTING SERVICE. They have been doing an excellent job. The M.A.G.C.S. are very fortunate for their fine work.

Many of you remember the old Midwest Association silent movie taken back in 1926 in the Chicago area. It is now in the process of having a sound track added. Thanks to the G.C.S.A.A. It will become a part of the G.C.S.A.A. celebration at Sylvania Country Club in September. If all goes well, your editor will do the narrating. Going back fifty years in pictures on various places will require some reminiscing.

Bill Kraft, Superintendent at Valperaiso Golf Club Inc. reports his golf course came thru the winter in excellent condition - no winter damage. Tees, greens and fairways were treated with a chemical and did an excellent job. It was applied in the late fall and also in the first week of February. Bill, it appears hard work sometimes does pay off.

Ed Fisher, Superintendent at Butler National Golf Club, the site of the Western Golf Association Open Golf Tournament the latter week in June, reports GCSAA 1976 or 1977 Membership Cards will be honored at the gate. **REMEMBER, ONLY 1976 or 1977 MEMBERSHIP CARD GCSAA.**

A TRIP TO HAWAII

by George A. Davis, Sr.

A trip to Hawaii can be a rewarding, happy experience that will remain in your memories throughout your life.

When you debark from your plane, you are greeted with beautiful sunshine after several months of blustery winter—into a new world that is part of these United States and hustle and bustle into the busy life of being a tourist in your own Country, where over two million people come each year to see and learn what Hawaii is all about—you say to yourself—it has to have something—and then when you are about to leave for home you again say to yourself—it has. It has charm, beauty, interest, weather and a way of life you've always dreamed of and promise yourself, I'm coming back again to this unbelievably romantic paradise. It gets to you—you can't help it. Even if your visit is for only a week, the end results will be the same. If you can make it for two weeks or more—all the better—because you can relax upon the beautiful beaches between your visits to the various sights of interest.

Here we can mention a few, such as: Pearl Harbor—where the day of infamy took place and made unforgettable history in our own time. Then to the Polynesian Cultural Center, where you see unforgettable beauty and cultural accomplishment of the natives. Sea Life Park is another must, where trained porpoise and whales perform fantastic acrobatic stunts, in multi-million dollar setting.

As Superintendents, you will want to visit Waiialae Country Club where the Hawaiian Open is held each year, on land that is so valuable, you couldn't give it a price tag.

A trip around the Islands to see the vast cane and pineapple fields, which are a big part of Hawaii's economy. You will stop at the Kauilima Hotel on the North Shore for lunch and pass between two eighteen hole golf courses—which is a good 40 to 50 miles from the Waikiki area. You will want to stay in the Waikiki area, preferably at a hotel on the Waikiki Beach, in one of the following hotels, which are on the beach: Hawaiian Village, Reef Hotel, Halekulani, Sheraton, Waikiki and Royal Hotel, The Outrigger, Kahala Hilton Hotel, Moana and Surf Rider.

Hotels close to the beach within a short walk are: Reef Towers, Princess Kaiulani, Edgewater, Hawaiian Regent, Holiday Isle, Ilikai, Queen Kapiolani, Imperial Hawaii Hotel, Kuhio Hotel, Malihini Hotel (small), Waikiki Beachcomber, Waikiki Gateway, Waikiki Grand, Waikiki Surf and Waikiki Surfside.

Hotels 50 to 60 minutes away from Waikiki area are: Makaka Inn and Kuilima, both with two golf courses. Both are fine hotels for just rest and golf, without the hustle and bustle of sightseeing—all have beautiful shops to buy things, especially Kuilima, which was a Del Webb Hotel until it was sold, but believe the management is still in tact. Golf carts are available at all golf courses. Bring your cameras and capture the beauty of your visit.

In finality, let me give a word of warning, so your trip will not be marred in any way—be sure the agency you book your trip with, deals directly with

the hotel you are staying at and has made pre-payments for the rooms for the extent of your visit, because you will be going at a time when most all the hotels on the beach are fully booked and in the last few years overbooking has become a matter of local legislation and disappointment to many tourists, who found themselves transferred to other hotels not near Waikiki or beaches—even on other Islands. With this word, I leave you to be sure to decide on your trip months in advance, making all necessary arrangements, to book through a reliable agency even to the extent of paying in advance for a room to the Hotel of your choice.

Have a good trip and a lot of fun.

P.S. Mr. Davis has been going to Hawaii for over 30 years and lives there (in recent years) about six months of the year, where he has his own apartment in the Waikiki area and is thoroughly familiar with the Hawaiian Islands. If you have any specific questions, you may write to him personally for his suggestions and advice. To get brochures on Hawaii, write directly to Hawaii Visitors Bureau, 2285 Kalakaua Avenue, Honolulu, Hawaii 96815.

NEXT ARTICLE: Entertainment and restaurants; shopping at the stores; medical assistance; suggestions to get the most for your money; places to avoid.

FOND OF YOUR POND

Join the
"PFA" Club
(Pond Fountain-Aeration)

Keep unwanted Algae under control with Floating "Fountain" Aerators. 1/2 HP to the big 7-1/2 HP models which can be equipped with a variety of spray heads. Some of our installations are:

Butterfield - Oak Park - Evanston

River Forest - Hinsdale

Ruth Lake - Inverness

Timber Trails - North Shore

Villa Olivia - Westmoreland

Also, Pumps of all types.

SES COMPANY

(Smith Ecological Systems)
3127 Wallin Avenue
Rockford, Illinois 61103
815/968-8079

**SUPPORT YOUR
ADVERTISERS**

CHIPCO protects your turf from the world's toughest critic...

The golfer

- Chipco[®] Spot Kleen
- Chipco[®] Microgreen
Liquid
- Chipco[®] Turf Herbicide "D"
- Chipco[®] Spreader
Activator
- Chipco[®] Thiram 75
- Chipco[®] Crab Kleen
- Chipco[®] Turf Herbicide
MCP
- Chipco[®] Buctril[®]
- Chipco[®] Turf Kleen



RHODIA INC. AGRICULTURAL DIVISION
Monmouth Junction, New Jersey 08852

ARE YOU CONFUSED? — YOU OUGHT TO BE!

The constant changes in distributors, products' availability, and sales people calling on you during the past five years are mind boggling.

ILLINOIS LAWN EQUIPMENT, INC.

Your 22 year old, full line, reliable, local, servicing distributor would like to help you by restating its position in the marketplace

Here Is A List Of What We Can Help You With:

EXCLUSIVE EQUIPMENT & PARTS DISTRIBUTOR FOR: (COMPLETE STOCK)	FACTORY DIRECT PRODUCT & PARTS DISTRIBUTOR FOR: (GOOD STOCK)	CAN FURNISH YOUR EQUIPMENT & PARTS NEEDS: (SOME STOCK)
JACOBSEN TURF & COMMERCIAL	Cyclone Spreaders	Brillion Seeders
CUSHMAN TRUCKSTERS	Foley Grinders	Champion Trailers
HECKENDORN MOWERS	Saws - Homelite & McCulloch	Billy Goat Vacs
ROGER	Weedeaters	Giant Vac Loaders
SODMASTER	Woods Rotaries	Howard Rotovators
EXCEL HUSTLER ROTARIES	Complete Engines - Kohler, Jacobsen, Briggs & Stratton, Lauson-Tecumseh, Wisconsin	Meyers Snow Plows
LO BLO AIR BROOMS	Champion Spark Plugs	Olathe Branch Chippers
LELY SPREADERS	Ignition Components - Repco, Fairbanks Morse, Wico	Trailevator Trailers
RACINE TAMPERS	Walbro Carburetor Components	York Rakes
SMITHCO RED RIDER TRUCKS, SPRAYERS, & TRAP RAKES	R&R Tines	Engines - Onan, Clinton
HEINRICH TRUCKS	Golf Products - Par Aide, Standard, Lewis	Ignition Components - Marvel Schebler, Niehoff, Prestolite
MYERS SPRAYERS	Sprinklers - Rain Bird, Nelson	Zenith Carburetor Components
ROYER SHREDDERS & POWER SCREENS	Henry Ball Washers	Skinner Irrigation
	Chemicals - Mallinckrodt & Diamond Shamrock	
	Agrico Fertilizers	
	Northrup King Grass Seed	

Illinois Lawn Equipment, Inc.

[800] 942-8610
ILLINOIS

14750 La Grange Road
Orland Park, Illinois 60462

[800] 323-7042
INDIANA-MICHIGAN

(312) 349-8484