

LABOR- SAVING GRASSES



GLADE KENTUCKY BLUEGRASS

- Does Great in Sun Or 60% Shade
- Excellent Disease Resistance to Powdery Mildew — Stripe Smut — Leafspot — Rust
- Quick Recovery — Fast Germinating

Adelphi

KENTUCKY BLUEGRASS

- Low Growing — Tolerates Close Mowing
- Greens Up Earlier in Spring — Stays Green Longer In Fall
- Great Resistance To Disease

CITATION

FINE LEAF PERENNIAL RYEGRASS

- Performs Great In Hot, Humid Areas
- Improved Mowing Qualities
- Blends Well With All Other Grasses

FOR MORE DETAILED INFORMATION AND
TEST RESULTS WRITE TO:

the VAUGHAN-JACKLIN corporation

5300 Katrine Avenue, Downers Grove, Illinois 60515, (312) 969-6300

WAREHOUSES LOCATED IN:

Bound Brook, New Jersey • Landover, Maryland • Ovid and Grand Ledge, Michigan • Spokane, Washington

NATIONAL CHEMSEARCH CORP.

222 South Central Ave.
St. Louis, Missouri 63105

Waiter: "May I help you with your soup, sir?"
Customer: "What do you mean? I don't need any help."
Waiter: "Sorry sir. Considering the sound, I thought you wished to be dragged ashore."

Cleary Products for Better Turf

Fungicides

3336 Turf Fungicide

A broad spectrum systemic fungicide that prevents and controls all six major turf diseases.

Bromosan Turf Fungicide

The newest broad spectrum systemic fungicide for those persistent trouble areas.

Caddy PMAS (10%)

Spotrete
Granular Turf Fungicide
Cad-Trete
Spectro

Herbicides

MCPP

MCPP Plus 2,4-D

Methar 80

Methar 30

AMA Plus 2,4-D

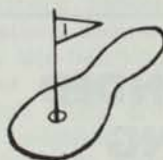
AMA (Super Methar)

Specialties

All Wet
Clear Spray
Tru-Green
Grass-Greenzit

W-A-CLEARY
CORPORATION

P.O. Box 10, Somerset, N.J. 08873



PENNCROSS

BENT SOD

TORONTO C-15

BENT SOD OR STOLONS

- ★ Pure To Strain
- ★ Maintained at 1/4" mowing height with "Greens King"
- ★ Grown on Sandy Loam Soil
- ★ Toronto C-15 Strain resistant to leafspot.

— BLUEGRASS SOD —

- Adelphi
- Merion
- XL-100 Blend
- KY-33 Blend



H & E Sod Nursery, Inc.

3900 West 167th Street
Markham, Illinois 60426

312 798-2210

EVERYTHING FOR!

RAIN BIRD®

UNDERGROUND IRRIGATION SYSTEMS

FULLY AUTOMATIC WITH MASTER AND SATELLITE CONTROLS
AUTOMATIC GREENS AND TEES · MANUAL FAIRWAYS
MANUAL SYSTEMS OR QUICK COUPLING VALVES

YOUR ONE STOP SOURCE FOR!

PUMPS -- PUMPING STATIONS
PRESSURE TANKS - STRAINERS - PRESSURE RELIEF VALVES
ROLLER BASES - COOLING NOZZLES - HOSE

REPLACEMENT PARTS FOR!

Buckner, Nelson, **RAIN BIRD®** Skinner, Safe-T-Lawn



Century Supply Corp.
3890 W. 11 Mile Rd.
Berkley, Mich. 48072
(313) 543-7730

Rain-Aid Div.
22159 Telegraph Rd.
Southfield, Mich. 48075
(313) 356-9137

Century Rain-Aid Div.
341 Lively Blvd.
Elk Grove Vill., Ill. 60007
(312) 640-6660

PRECISION BLENDED TOP DRESSING

Custom blended to your specifications
by our modern equipment.

*Buy when you need —
Eliminate costly storage*

We sell an air dried, uniform and
free flowing top dressing.

ASK THE MAN WHO HAS USED IT.

HUMUS — BLACK SOIL

HENRY FRENZER

Area Code 312
658-5303

620 Webster St.
Algonquin, Ill.
60102

LET US HELP YOU!

Lakeshore

Equipment & Supply Co.

Bill Schumacher
Crystal Lake, IL
815/455-2284

Office
Elyria, Ohio
216/323-7544

Ross Smith
Villa Park, IL
312/620-0989

TABLE 1. Application of insecticides to golf course fairways for control of *ATAENIUS SPRETULUS* LARVAE - 1975.

Insecticide	Formulation	Rate Lb AI/a	Fairway No.	Grubs/ft ² ^{2/}		% reduction from before treatment
				Before Treatment	10-14 days after treatment	
WESTERN HILLS COUNTRY CLUB, CINCINNATI, OHIO ^{1/}						
Dylox	80S	8	9	223	7	97
Dylox	80S	8	18 front	320	34	89
Dylox	80S	8	18 back	166	76	54
Dasanit	15G	5	15	281	10	96
Dasanit	15G	5	17	321	1	100
Dasanit	15G	5	16	210	7	97
HYDE PARK COUNTRY CLUB, CINCINNATI, OHIO ^{3/}						
Diazinon	50%WP	5.5	2	268	77	71
Diazinon	50%WP	5.5	4	127	33	74
Diazinon	50%WP	5.5	5	189	63	67
Dylox	80SP	8	1	154	112	27
Dylox	80SP	8	13	175	17	90
Dylox	80SP	8	10	224	72	68
Untreated			8	82	45	45

1/ Treatments applied June 17-19, 1975 using mist blower (0.8 gal. water/1000 ft²) for liquids and Gandy drop spreader for granules. Irrigated immediately after application.

2/ Population estimates based on 11 samples 4.25 inches in diam./fairway.

3/ Treatments applied June 20-22, 1975 using boom sprayer (vol. applied unknown). Fairway irrigated before and immediately after application.

Ed. Note: This table was omitted in the May issue due to lack of space. Sorry.

HOMEOWNER INSECT WATCH

Birch trees, often planted in the hope that they will become stately additions to the landscape, are often attacked by bronze birch borer says James A. Fizzell, University of Illinois Extension adviser in Cook County. These borers will start emerging as adult beetles around June 7 in the northeastern part of the state. The emergence holes left by these beetles in the bark are small and D-shaped. Birch borers will commonly infest the upper limbs first. Such limbs are easily detected because the foliage takes on a pale green color or the entire limb is dead. Dead or dying branches should be removed. Bronze birch borer can be controlled by applying a spray containing dimethoate (Cygon) when the eggs are hatching. Follow recommendations on the label for

mixing and apply to the trunk and limbs thoroughly. In northern Illinois apply around June 7. Repeat applications should be made about 3 weeks later to control late hatching borers.

Other insect pests that have gained a lot of attention lately are sowbugs, and millipedes. Wet spring weather has favored development of these nuisance pests. The small grey oval pillbugs look like "Miniature armadillos" and millipedes are identified as hard-shelled, brown-grey, worm-like animals with many legs. These insects are common and prefer moist areas with decaying matter such as leaves and grass. They are both harmless. For control, a good cleanup is suggested around shrubbery and foundation. If the problem persists, spray the outside foundation wall and adjacent three feet of soil or lawn with carbaryl (Sevin) or diazinon.

Schroeder's Nursery, Inc.



TREES - EVERGREENS - SHRUBS

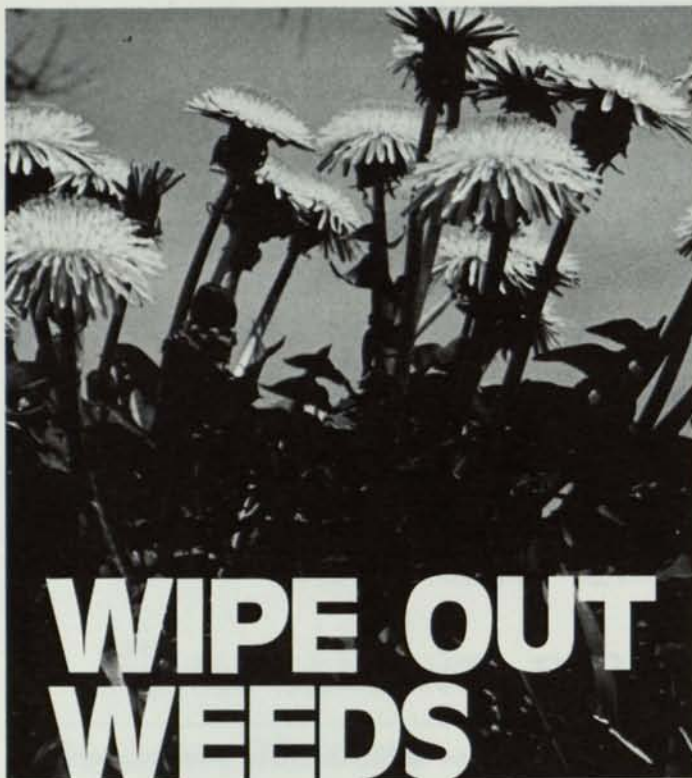
Specializing in large Caliper shade trees and Ornamentals.
We also offer complete installation service.

TELEPHONE: (312) 546-9444

Arthur E. Schroeder
Richard A. Schroeder
Don Virgens

GRAYSLAKE, ILL.
Rt. 1 - Box 34-W

Nursery on Rt. 60 between Rtes. 12 (Volo) and 83 (Ivanhoe)



WIPE OUT WEEDS

with Banvel® 4S & Banvel®+2, 4D

HERBICIDES

The broadleaf weed 'specialists' designed for professional turf programs.

Here's why BANVEL® herbicides are the professionals' choice for weed control:

- Used as directed Banvel will not harm trees, ornamentals or turf—it just eliminates weeds.
- No season restrictions. Lay down Banvel from early spring to late fall—all through the growing season.
- Rain will not affect Banvel. It keeps on working because it translocates—penetrates leaves and is absorbed through roots to attack every part of the weed.
- No special spraying equipment necessary. It is easy to clean out of equipment after use.
- Mixes readily with hard or soft water.
- Easily stored through winter months without losing potency.

Banvel herbicides—products for professional turf men



Velsicol

VELSICOL CHEMICAL CORPORATION
341 East Ohio Street
Chicago, Illinois 60611

©Velsicol Chemical Corporation, 1976

IN MEMORIAM

The sympathy of Midwest Golf Course Superintendents Association is extended to the Henry L. Lange family, due to the death of Henry on May 20, 1976. Mr. Lange was an employee of Glenview Club for the past fifty-four years. Henry started at Glenview Club in 1922 as a caddy. It is reported, this is the only place he ever was employed. A perfect record for a truly great man. Henry was superintendent of the golf course and other grounds for 37 years prior to his retirement. He will be missed by his many friends. Mr. Lange was a member of the Golf Course Superintendents Association of America and also a member of the Midwest Association of Golf Course Superintendents.

Woods "Dixie Cutter" Rotary, Model M-5, Side Chains & Mulcher. Very Good Condition. 3 point hitch. \$325.

"Centry Line Sprayer," 55 gal. tank, Hoses, Pump and gun included. Like New. 3 Point Hitch. \$75.

CLIFF BABBS

126 W. Forest Ave. Roselle, Ill.
Telephone 894-9302

TWO MORE "CRITTERS" ON SILVER MAPLE

Samples of silver maple received by Extension offices have been host to two insects which you should be able to recognize.

One is a wooly aphid which lives in crevasses in twigs or bark. Natural controls normally keep this pest under control and only in exceptional cases would spraying be necessary.

The second insect is a small ladybug which is a predator of cottony maple scale. The adults are black with two red spots on their back, and apparently feed on young scale crawlers. The larvae can be found in the egg masses eating the eggs. Where scale populations are low this predator is nearly eliminating the pest. Where scales are numerous, it will probably take more than one season for predation to eliminate the infestation.

Black lady bugs usually move into an area about the third year of heavy infestation by cottony maple scale. Before resorting to spraying the scale, check for predation of the egg masses. You may be able to save yourself a spray application.

There are also some other natural predators feeding on cottony maple scale in the area.

GYPSY MOTH

The animal and Plant Health Inspection Service (APHIS), and the Illinois Department of Agriculture have been surveying the Palos Park area for Gypsy moth and at last count had trapped nearly 200 males. The infestation seems to be centered between 123rd and 124th Street just west of 80th Avenue. The females and egg mass have not been located. This pest poses a real threat to woods in the Palos area if it ever gets out of control.

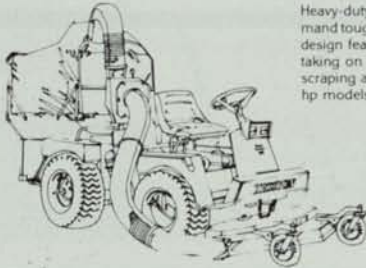


Smith Turf Equipment, Inc.
1421 W. Fullerton Ave. • Addison, Ill. 60101

The grounds crew that works for you!

Hesston Front Runner®

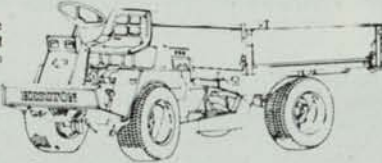
Choose the GMT, Turf Truck or Three Wheeler.
All offer proven performance and all-season versatility.



Heavy-duty grounds maintenance chores demand tough, versatile equipment with advanced design features. And Front Runner fills the bill, taking on mowing, vacuuming, snow removal, scraping and more with a choice of 19.8 or 23 hp models.

Front Runner GMT. The original revolution in grounds maintenance. Articulated steering with center pivot lets you make short turns, mow flush around trees and shrubs and trim tight around buildings.

Front Runner Turf Truck. Take it away! Up to 1000 pounds! Now, a tough little hauler with added versatility. With a choice of quick-change attachments, the Turf Truck performs year-round chores with Front Runner efficiency.



Front Runner Three Wheeler. The new look in value. Clean design, stability and operator comfort — now in a three-wheel machine. Front-wheel hydrostatic drive and heavy-duty rack and pinion steering provide excellent stability and maneuverability.

See us today for the complete Front Runner story and a demonstration.



Smith Turf Equipment, Inc.

1421 W. Fullerton Ave. • Addison, Ill. 60101

Phone: (312) 620-8064

HESSTON
LAWN EQUIPMENT

The pest has gained entrance to this area and others because of the habit of the female which crawls up on nearly any object to lay eggs. If the object in the egg laying site happens to be a camper or car from Illinois, the egg hatch and feeding will most likely take place here. If you suspect you have an infestation of this pest contact any of our Extension offices.

HOME GROUNDS PESTS

Spruce Gall aphids are exposed when galls open in late summer. Malathion or diazinon will control them at that time.

Simmerman pine moths which cause extensive damage to trunks of Scotch and other pines are flying now and laying eggs. Malathion applied to trunk and whorls will protect the trees from attack by hatching larvae. Use Malathion at twice recommended strength and repeat treatment in two weeks.

Cooperative Extension Service
4200 W. Euclid, Rolling Meadows, IL 60008

A FRIEND

At a social function the conversation drifted to the subject of friendship. An athlete said, "In my opinion, a friend is a balancing pole that enables us to walk the tight rope of life without falling."

A physician said, "I believe a friend may be likened to a soothing ointment for the cuts and bruises of life."

A jeweler said, "I think a friend is a golden link in the chain of life."

Then a woman in mourning spoke up and said, "A friend is the one who comes in when the whole world goes out."



The good old summertime is not vacation time for fungi

start summer disease control NOW with TUCO Acti-dione® Thiram



Heavy play plus unchecked fungal activity can spell disaster. Use Acti-dione Thiram weekly to control brown patch, dollarspot, melting-out, fading-out, leafspot, rust and powdery mildew. Call us now for help in planning summer disease control.

DON MASKE

AGRICULTURAL CHEMICAL SALES REPRESENTATIVE
HOME: 924 PUTNAM DRIVE, LOCKPORT, ILLINOIS 60441
815/838-8184

DIVISION OF THE UPJOHN COMPANY

Nels J. Johnson, Tree Experts, Inc.

SINCE 1930

Complete, economical tree service for Private Estates, Parks, Municipalities, Golf Courses Cemeteries, Schools, Industrial Areas.

All phases of Arboriculture, Diagnosing, Pruning, Treating, Transplanting, Fertilization, Hydraulic and Mist Spraying, Removals, Stump, Routing, Municipal Forestry.

— FULLY INSURED —

GRADUATE FORESTERS • LICENSED ARBORISTS

MAIN OFFICE: 912 Pitner Avenue, Evanston, Illinois

Phones: GR eenleaf 5-1877 — GR 5-5255

Hinsdale, Illinois — FA 5-0970

- All Major Turf Supplies
- Par-Ex
- Bean Sprayers
- DuPont
- Chipco
- Vertagreen
- Daconil - Dacthal

Quality — Value — Service

PAARLBERG CHEMICALS

172nd & Paxton, So. Holland, Ill.
GR 4-3086 747-0630

Northrup King thinks:

quality turfgrasses ought to hang tough!

Today you need turfgrass that can thrive with as little maintenance as possible. So Northrup King offers seed for grass varieties that are both beautiful and tough.

Aquila Kentucky Bluegrass persists under low to moderate fertilization, and it requires less moisture to maintain its dark green color. These attributes distinguish Aquila from other bluegrass varieties.

Parade Kentucky Bluegrass is extremely fast-starting and develops a tough sod quickly. It is truly a vigorous variety that can take traffic and come back fast from injury.

For information on these and other outstanding turfgrasses, contact your Northrup King representative.



NORTHROP, KING & CO.
BOX 959 • MINNEAPOLIS, MINNESOTA 55440



P. Frankowski, R. Trevarthan, Mrs. B. Johnson



Left to right: Mrs. Fuchs, W. Fuchs, Mrs. K. Fuchs, K. Fuchs, Ted Mochel



TURF
SUPPLY CO.

ALL MAJOR TURF SUPPLIES

- PAR-EX
- Vertagreen
- Du Pont
- Diamond Shamrock
- Sand Blasters
- Cyclones
- Fore Par

Box 182 — Steger, Ill.
747-0630

**SUPPORT YOUR
ADVERTISERS**

Nutrient deficiencies, weeds, diseases, thin turf, insects.

For the superintendent
who has everything . . . or
anything . . . or who just wants
to make a good thing better . . .
ProTurf offers research tested,
golf course proven professional
turf products.

Just give me a call.



A division of
O. M. Scott & Sons

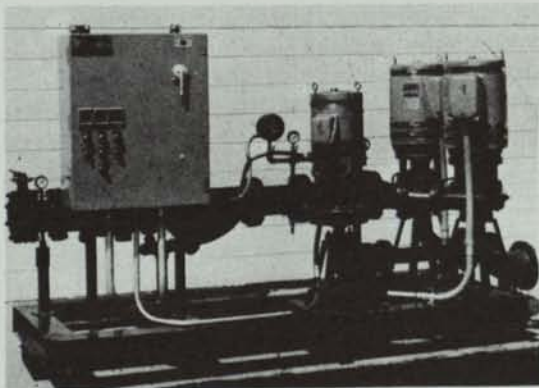


Bill Brazeau
3 Willowcourt
Bolingbrook, Ill. 60439
Ph: 312 - 739-7077

Jerry O'Donnell
Rt. 2 - S. Hill Road
DeForest, Wis. 53532
Ph: 608-846-3629

Bill Keneipp
1785 Hinsdale Dr.
Decatur, Ill 62526
Ph: 217 - 877-5929

SISCO PRE-FABRICATED PUMPING PLANT



The two main pumps are Cornell 40 h.p. or 50 h.p. units. Total unit capacities range from 750 to 1200 GPM at pressures of 100 p.s.i. to 118 p.s.i. Other ranges available.

Available with either a Cornell 10 h.p. jockey pump (pictured) or a 750 GPM equivalent Well-X-Trol tank.

Standard equipment includes mercoid "Start - Stop" switches, suction and discharge piping, non-slam check valves, "Y" type strainer and a combination pressure regulating and check valve with flow switches and discharge gate valve.

A pre-wired electrical panel (480V, three-phase) includes pump hour meters and a manual operator to alternate the lead pump.

SPRING SPRINKLER SPECIAL —

Trade in your Rainbird, Buckner, Skinner sprinklers and get a trade-in **DISCOUNT** on the new 1976 model sprinklers. Call Paul Bando for details.

SPRINKLER IRRIGATION

1738 Armitage Court
Addison, Ill. 60101
312 - 629-7730