

**UNIVERSITY OF ILLINOIS
COLLEGE OF AGRICULTURE**

Mr. Ray Gerber
Editor, The Bull Sheet
865 Hillside Ave.
Glen Ellyn, Illinois 60137

Dear Ray:

Enclosed are some photographs of presentations made at the 16th Annual Illinois Turfgrass Conference. I believe that these reflect the growing support for turfgrass research at the University of Illinois. More importantly, they show the commitment of Golf Course Superintendents, Sod Growers and others in the turfgrass industry to stimulate the search for expanded knowledge in turfgrass science and technology. It also establishes a working partnership between University scientists and turfgrass managers which is critical for achieving our ultimate goal - better turf through research. With this support, we at the University can be more effective in serving the informational needs of turfgrass personnel working in all phases of the industry.

I wish to express my sincere gratitude to the MGCSA and others who have supported our work for their confidence in us and their generosity.

Sincerely yours,
A. J. Turgeon
Assistant Professor
and Extension
Turfgrass Specialist



Mr. Mike Bavier (right), former President of Midwest Golf Course Superintendents Association presenting a check for \$1,000 to Dr. Al Turgeon (left) to support turfgrass research at the University of Illinois.



Mr. Pete Vandercook (right), former President of the Illinois Turfgrass Foundation, presenting a check for \$3,000 plus reel blade and bedknife grinder assemblies to Dr. Al Turgeon (left) for support of turfgrass research at the University of Illinois.



Mr. Chuck Dougherty (center), representing the O. J. Noer Foundation presenting a check for \$2,000 to Dr. Al Turgeon (left) and Mr. Kirk Hurto, Graduate Research Assistant, to support a research project at the University of Illinois entitled "The impact of thatch on herbicide persistence, mobility and efficacy".



Mr. Ben Warren (left), President of Warren's Turf Nursery, presenting a check to Dr. Dick Ford, (right) Head of the Department of Plant Pathology at the University of Illinois, to support research on Fusarium blight by Ms. Kathy Hermann (center), Graduate Research Assistant.

For excellence in their respected profession and special service to the Game of Golf, the Western Golf Association is truly proud to officially commend the following golf course superintendents:

Mr. Edward Fischer, Butler National Golf Club, Oak Brook, Illinois, host to the 1975 Western Open Championship.

Mr. Ken Novotny, Stillwater Golf & Country Club, Stillwater, Oklahoma, host to the 1975 Western Junior Championship.

Mr. Dennis Truhn, Point O'Woods Golf & Country Club, Benton Harbor, Michigan, host to the 1975 Western Amateur Championship.

Their outstanding skill and dedication resulted in three golf courses superbly conditioned for championship play, and this is recognized by WGA as a key factor in the success of our three, national Championships during calendar 1975. Their cooperation in this phase of their work was in keeping with the highest traditions and best interests of the Game of Golf.

Sincerely,
Thomas A. Reynolds, Jr.
President

- All Major Turf Supplies
- Par-Ex
- Bean Sprayers
- DuPont
- Chipco
- Vertagreen
- Daconil - Dacthal

Quality — Value — Service

PAARLBERG CHEMICALS

172nd & Paxton, So. Holland, Ill.
GR 4-3086 747-0630

ASPHALT DRIVEWAYS — PARKING LOTS — ETC.
"Golf Course Work a Specialty"

LEMONT PAVING CO.

SAND & STONE
115th & Archer Ave. (Rt. 171) - Lemont, Illinois
RAY MURPHY 257-6701

Mrs. Grass "L"
846 North Fairview
Park Ridge, Illinois 60068

Hi Ladies, glad to hear your response is very favorable in our new endeavor with monthly publications. So it looks as if green is our scene. Thank you, President Fred for your warm introduction. Hope we don't conflict with your monthly message. I'll try each month to give a little info of importance or interest so feel free to contribute.

We all send out our best to Vickie Albaugh and hope she's feeling better. We can't let a mother of four get sick with summer approaching. Wileminia Fuchs has just finished a stay in the hospital, hope everything is fine with her. We send our best to you Wileminia. Even though a little late we Ladies would like to say Congratulations to Mrs. & Mr. Ed Fischer for producing such a fine baby boy. Also I would like to thank Mrs. & Mr. Tom Gilman for watching my husband at the convention while he bartended, because when I'm not around he tends to drink too much orange juice! By the way, does anyone know if Wally Fuchs got lost while in Minn.? Because he is not too good on road directions unless a local grocer writes it on a brown paper bag. Cute, Real Cute Wally!!! We hear Bonnie has a Secret Admirer, get any roses lately Bonnie??? Congratulations to Bob Kronn on his recent marriage, and we wives are looking forward in meeting a new Supt. wife. Welcome Aboard Mrs. Kronn. Another congratulations goes out to Jim Reed and the lovely Susie Stuart on their engagement. Good luck to Russ & Ruth's check book this summer because with daughter Barbara that makes two weddings ahead for them. Ruth what's on the agenda for you and Russ with all that free time Alone?

See you Ladies next month, meanwhile—keep your correspondence coming in!!!!!!

Dear Mrs. Grass "L",

"I think the idea of publishing commentary from Supt. wives is just Super!! I'm looking forward to seeing all the results. Following is a poem and drawing". Pat



LAMENT OF A GOLF COURSE SUPERINTENDENT'S
WIFE AND PART-TIME SECRETARY

by Patricia Ann Sokolis

"But what do you do," my friends all ask
"when snow is on the ground?"
"There's nary a golfer in sight," they say
"why do you stick around?"

I must admit, I felt that way.
I began with a pleasant plan.
We'd winter in the "Sunshine State"
and come home with a fabulous tan.

I knew the summers would be busy
and I wasn't far from wrong.
Crowds of golfers descended at five
and stayed here all day long.

..But when the leaves began to drop
and fall was in the air,
A rest was on my agenda
as I counted my airplane fare.

My mind was filled with dreams of warmth,
no need for scarves or boots.
I felt pity for my less fortunate friends
as I packed our bathing suits.

But I was wrong, oh, was I wrong!
the work had just begun.
To prepare a course for the following year
there's plenty to be done.

Materials must be ordered,
equipment to repair...
The papers are wildly flying
and paint smells fill the air.

We're working harder than ever now,
a creed of "do or die."
The check list grows ever longer,
as winter months fly by.

The 8 by 10 of a sunny beach
still hangs above our bed.
We'll get there when we're 65,
if we're not already dead.

..So before you ask the question
"In the winter, what do you do?"
You'd better give it a second thought
I just might answer you!

Dear Pat,

Thank you, your encouragement was greatly received and continue your creativity our way. I'm sure a number of us can and did identify with your well written poem. Any contribution you care to send will always be appreciated. It's great to see how talented the other half is . . . Super architectural qualities.

Dear Mrs. Grass "L",

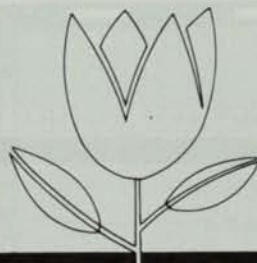
"My Dad went to the Minn. Conference and brought me back a Super Superintendent T-shirt. So I've written a story. My Dad thought I was real funny running through the shop yesterday with my T-shirt on, so did his Green Chairman.

The Adventures of Super Superintendent
Faster than a speeding golf ball, able to leap shop buildings in a single bound...able to paint brown spots with green paint...Look on the ground...it's a moth...no...it's a worm...no...It's Super Superintendent...
Thank you, David

Dear David,

I must say it sounds as if you're following in your father's footsteps with your humor. But needless to say, I'm sure your father is hoping the letters fade as your mother washes the shirt.

Anyone can build a house. But it takes love to build a home.



April showers
May flowers
and a lot of
fungal activity

start spring disease control NOW
with **TUCO** Acti-dione TGF®



The same conditions that promote spring growth can open the door to leafspot, dollarspot and melting-out. Start right after first mowing to apply Acti-dione TGF regularly. See us for help in spring disease control.

DON MASKE

AGRICULTURAL CHEMICAL SALES REPRESENTATIVE
HOME: 924 PUTNAM DRIVE, LOCKPORT, ILLINOIS 60441
815/638-8164

DIVISION OF THE UPJOHN COMPANY

Nels J. Johnson, Tree Experts, Inc.

SINCE 1930

Complete, economical tree service for Private Estates, Parks, Municipalities, Golf Courses Cemeteries, Schools, Industrial Areas.

All phases of Arboriculture, Diagnosing, Pruning, Treating, Transplanting, Fertilization, Hydraulic and Mist Spraying, Removals, Stump, Routing, Municipal Forestry.

— FULLY INSURED —

GRADUATE FORESTERS • LICENSED ARBORISTS

MAIN OFFICE: 912 Pitner Avenue, Evanston, Illinois
Phones: GR eenleaf 5-1877 — GR 5-5255
Hinsdale, Illinois — FA 5-0970

Schroeder's Nursery, Inc.

TREES - EVERGREENS - SHRUBS

Specializing in large Caliper shade trees and Ornementals.
We also offer complete installation service.

TELEPHONE: (312) 546-9444

Arthur E. Schroeder
Richard A. Schroeder
Don Virgens

GRAYSLAKE, ILL.

Rt. 1 - Box 34-W

Nursery on Rt. 60 between Rtes. 12 (Volo) and 83 (Ivanhoe)





**TURF
SUPPLY CO.**

ALL MAJOR TURF SUPPLIES

- PAR-EX
- Vertagreen
- Du Pont
- Diamond Shamrock
- Sand Blasters
- Cyclones
- Fore Par

Box 182 — Steger, Ill.
747-0630

ROSE CARE IN SPRING

By Paul Voykin

In the North Shore area I wait until about the second week of April to uncover our hybrid tea roses. (We cut the roses back every late fall, tie them, and then heap dirt mounds around them. The final job is covering them with straw for the winter.) Once the straw is taken off in the spring, the tea rose bushes uncovered, and the ground levelled and raked, we prune all dead wood off. Sometimes though, we wait about ten days or so before snipping off dead cones and useless branches. This gives us a chance after a rain or two to clearly see what is dead, if anything. However, we do spread right after the spring uncovering, exactly two handfuls of a chemical fertilizer, usually 10-6-4, but any other nutrient combination of nitrogen phosphorus and potash such as 10-10-10, 10-8-6, 10-5-5, etc. are just as good. Be sure you stay away from the trunk and close roots at the trunk base. Spread the two handfuls in a circle around each rose bush. No nearer than 6 or 8 inches to the trunk base of the rose bush. Don't work the fertilizer into the soil. Leave it alone after spreading the fertilizer on top of the ground in a circle around each bush. Admittedly, it looks a little odd at first, but in no time at all, the 10-6-4 breaks down and the spring rains slowly wash the nutrients down into the root zone. Do exactly the same thing again in July right after July 4th holiday. Never later. Otherwise, the rose plants might be too soft going into the winter. And don't worry please about some expert telling you that the harsh chemical salts in the "hot fertilizer" will harm the roses. That's bunk. Just follow my procedure. In 17 years I've never lost a bush to this theory. There is something else you must diligently do if you want the best roses in your community. Give the roses a good spray once right after the uncovering in early April and then spray from **May to September** every week with a good pesticide formula. This is very important. Here is my formula and I have never found one better. It was given to me by an old and wise rose expert on his death bed.

MANZATE for blackspot
ISOTOX for insects
ACTI-DIONE for mildew

Use one tablespoon of each per gallon of water and mix. Also, every two weeks, include one half a teaspoon of a systemic called BENLATE 1991. Next fall, I'll advise you in detail my simple old fashioned method of putting roses to rest for winter. (This method was also given to me this time by another friend just before he expired.)



Smith Turf Equipment, Inc.

1421 W. Fullerton Ave. • Addison, Ill. 60101

The grounds crew that works for you!

Hesston Front Runner®

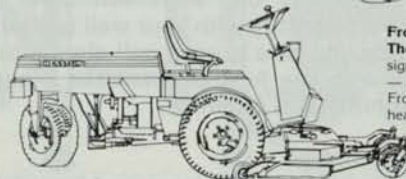
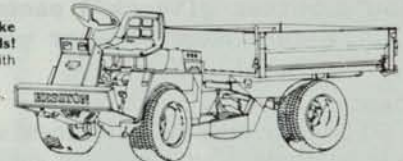
**Choose the GMT, Turf Truck or Three Wheeler.
All offer proven performance and all-season versatility.**



Heavy-duty grounds maintenance chores demand tough, versatile equipment with advanced design features. And Front Runner fills the bill, taking on mowing, vacuuming, snow removal, scraping and more with a choice of 19.8 or 23 hp models.

Front Runner GMT. The original revolution in grounds maintenance. Articulated steering with center pivot lets you make short turns, mow flush around trees and shrubs and trim tight around buildings.

Front Runner Turf Truck. Take it away! Up to 1000 pounds! Now, a tough little hauler with added versatility. With a choice of quick-change attachments, the Turf Truck performs year-round chores with Front Runner efficiency.



Front Runner Three Wheeler. The new look in value. Clean design, stability and operator comfort — now in a three-wheel machine. Front-wheel hydrostatic drive and heavy-duty rack and pinion steering provide excellent stability and maneuverability.

See us today for the complete Front Runner story and a demonstration.



**Smith Turf
Equipment, Inc.**

1421 W. Fullerton Ave. • Addison, Ill. 60101



An aerial view of the 18th green at Fort Lewis Golf Course, Ft. Lewis, Washington. The idea came from a member of the Ladies Golf Assoc., Kathy Hassell. She felt that the Military Golf Course should do something to commemorate the Bi-Centennial. The green is 6500 sq. ft., Superintendent: Ernie Bilger; Manager: Gene DeGenere.

Nutrient deficiencies, weeds, diseases, thin turf, insects.

For the superintendent
who has everything . . . or
anything . . . or who just wants
to make a good thing better . . .
ProTurf offers research tested,
golf course proven professional
turf products.

Just give me a call.



A division of
O. M. Scott & Sons

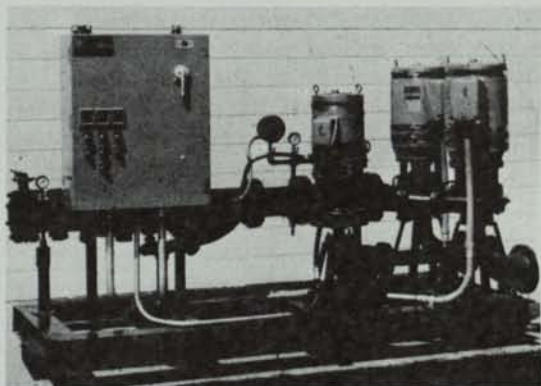
Bill Brazeau
3 Willowcourt
Bolingbrook, Ill. 60439
Ph: 312 - 739-7077

Jerry O'Donnell
Rt. 2 - S. Hill Road
DeForest, Wis. 53532
Ph: 608-846-3629

Bill Keneipp
1785 Hinsdale Dr.
Decatur, Ill 62526
Ph: 217 - 877-5929



SISCO PRE-FABRICATED PUMPING PLANT



The two main pumps are Cornell 40 h.p. or 50 h.p. units. Total unit capacities range from 750 to 1200 GPM at pressures of 100 p.s.i. to 118 p.s.i. Other ranges available.

Available with either a Cornell 10 h.p. jockey pump (pictured) or a 750 GPM equivalent Well-X-Trol tank.

Standard equipment includes mercoid "Start - Stop" switches, suction and discharge piping, non-slam check valves, "Y" type strainer and a combination pressure regulating and check valve with flow switches and discharge gate valve.

A pre-wired electrical panel (480V, three-phase) includes pump hour meters and a manual operator to alternate the lead pump.

Consult your SISCO representative for more specific information and prices.

SPRINKLER IRRIGATION
1738 Armitage Court
Addison, Ill. 60101
312 - 629-7730