

on 08/2019

THE MIDWEST ASSOCIATION OF GOLF COURSE SUPERINTENDENTS

COURSE

SEEING IS BELIEVING

WHAT LED ME HERE

KEEPING UP APPEARANCES

Mistwood Golf Club

Ben Keihnhofer

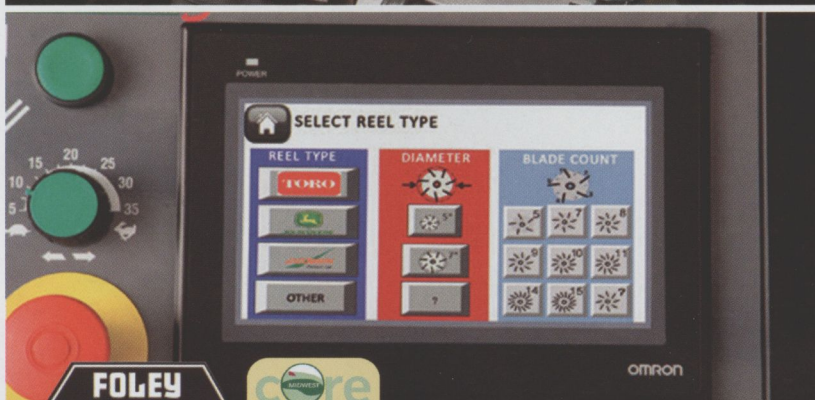
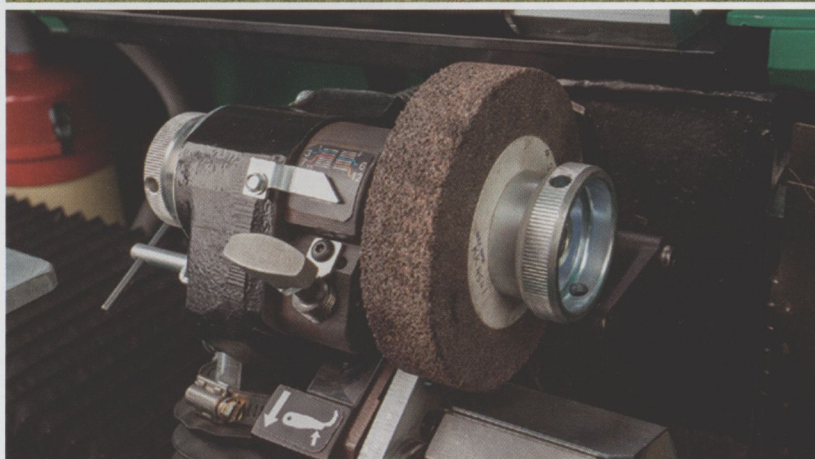
MSU
100 Library Ln
East Lansing MI 48823

MSU
100 Library Ln
East Lansing MI 48823

Prst Std
U.S. Postage
PAID
Grand Rapids, MI
Permit #260

ALWAYS IN SEASON

Foley United 653/633



COMMERCIAL EQUIPMENT SALES

John Jensen, Sales Manager
(414) 313-5130

Brian Placzowski
(815) 347-3888

Joe Etten
(630) 284-8492

Grant Rundblade
(815) 988-6303

Whitey Anderson
(630) 251-4832

Reinders

Solutions & Supplies for the Green Industry
111 Lexington Dr,
Buffalo Grove, IL 60089
www.reinders.com

toc

TABLE OF CONTENTS

front cover

Mistwood Golf Club, photographed by Brian Walters, will host the 2019 MAGCS Golf Championship. The recently renovated course will provide a great test of golf for our annual event.

4

FEATURE

What Led Me Here

Aaron Butler

SERIALS

SEP 12 2019

MICHIGAN STATE UNIVERSITY
LIBRARIES

Aaron Butler, Assistant Superintendent at Onwentsia Club shares his story of starting out knowing nothing about golf maintenance to following a well-thought and planned career path. PAGE 4.

DEPARTMENTS

- 03 President's Column
Justin Kirtland
- 09 The Bull Sheet
John Gurke
- 13 Inside the Shop
Jeff Chowela
- 14 Super-n-Site
Adam Charters
- 14 Commentary
Justin Prescott
- 24 Education Wrap Up
Jim Pedersen

DATES

2019 UPCOMING MIDWEST EVENTS

- 09/04/19 Midwest Championship at Mistwood Golf Club
- 10/09/19 Midwest October Meeting at Mt. Prospect Golf Club
- 12/04/19 Midwest Turf Clinic, Medinah Country Club

2019 Board of Directors

PRESIDENT

Justin Kirtland, Arrowhead Golf Club

VICE PRESIDENT

Brian Stout, Arboretum Club

SECRETARY / TREASURER

Jim Canning, White Eagle Golf Club

EXECUTIVE DIRECTOR

Luke Cella, CGCS

BOARD OF DIRECTORS

Nate Bolhous, Naperville Country Club

Josh Cull, Chicago Highlands

John Ekstrom, Inwood Golf Course

Mark Kosbab, Sportsman's Country Club

Michael Paciga, Kemper Lakes Golf Club

Todd Schmitz, Phillips Park Golf Course

PRESIDENT EMERITUS

Jim Pedersen, Hughes Creek Golf Course

COMMERCIAL REPRESENTATIVE

Rusty Stachlewitz, Advanced Turf Solutions

CLASS C REPRESENTATIVE

Conrad Pannkuk, Biltmore Country Club

CLASS DT REPRESENTATIVE

Wes Danielewicz, Butterfield Country Club

EDITORIAL CHAIRMAN

Brian Stout

ASSOCIATE EDITORS

John Gurke, CGCS

Chuck Barber

Midwest Association of Golf Course Superintendents (MAGCS) exists to promote professionalism and integrity, to provide networking, education and career enhancement opportunities to all members who facilitate the growth and enjoyment of golf.

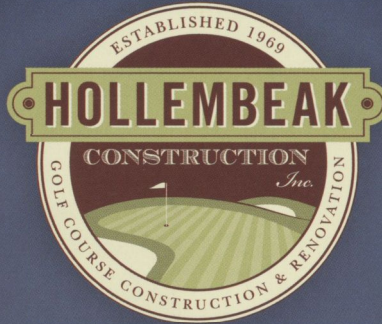
On Course is published monthly with original member content. For advertising opportunities please call 630-685-2420.

© 2019 by Midwest Association of Golf Course Superintendents. All rights reserved. Reproduction without permission is prohibited.

Reuse permissions: admin@magcs.org



The **Most Trusted Name** in Golf Course Construction and Renovation



New Construction



Renovation



Drainage



Better Billy Bunker
Certified Installer



630.675.5000 | Big Rock, IL | Hollembek.com



JW TURF



SINCE 1987

SALES, SERVICE & PARTS

WHATEVER YOU NEED!

180 Corporate Drive
Elgin, IL
(847)683-4653

Not just John Deere, JW Turf has over 30 allied product lines.



BERNHARD

BUFFALO TURBINE

TRU-TURF

Golf & Sports Turf Rollers

Salsco

STIHL



Wiedenmann





Justin Kirtland
Arrowhead Golf Club

Seeing is Believing


Golf course superintendents and other professionals in the field might be able to relate when I say that seeing is believing. Some of my favorite educational experiences are when I get to see other golf course facilities on a course tour with other superintendents. Immediately we bounce ideas off of each other, spurred by what we see and mixed with our own experience.

Just as beneficial, is to see how and what practices other superintendents are using to detail their properties. Unfortunately, this time of year is difficult to get away and do this so I thought I would share some details about how Arrowhead Golf Club gets some of its day to day maintenance done.

Arrowhead is 27 holes with 221 acres of rolling hills and oak savannas. Within the 221 acres we have 6 acres of greens, 4 acres of tees, 40 acres of fairways, 90 acres of rough, 12 acres of green banks and bunker banks, 40 acres of natural areas, 3 surface acres of bunker sand, 12 surface acres of ponds, and 14 acres of clubhouse grounds, a wedding site, a driving range, a maintenance facility, and a parking lot.

During the peak season we have 26 employees which includes 5 full time staff of Superintendent, Assistant Superintendent, Equipment Technician, Spray Technician, and Operations Specialist. The 21 part-time and seasonal employees work Monday- Thursday from 5:00 am to 1:00pm and on Fridays from 5:00 am to 9:00 am. On Saturdays and Sundays we work from 5:00am to 9:00am and the crew is split to ensure one full day off a week along with their half day on Friday. Should there be any weather events or special golf events this can change.

Monday through Friday our first tee time is 6:07 am off the South and West Courses; the first tee time on the East course is around 8:00 am. Weekend tee times are a bit earlier; play starts on the South and West Course as early as 5:30 am and players can start on the East Course about 7:30 am. It makes our team hustle to stay ahead of play and get the course set up for play. It's nice having 27 holes because during the week we can hold play on one nine while we specific cultural practices done or use outings to schedule selected maintenance procedures so we don't disturb any golf. It helps us to be efficient with our labor and get things done in a timely manner.

It's a busy place. Many of our college student staff members are getting ready to leave in the next few weeks. They complement our regular part time staff well as I really try and create a team with the whole group. I know most of you take care of your crew in different ways, usually with food – we have monthly pizza parties where we recognize individuals with a "You Rock" award. It's a park district wide program that has become a positive part of our employee recognition on the golf course. As the college peeps leave, one thing I always offer- is to pave the way if they'd like to work on a course in their college town – making a connection with the superintendent there. It's worked out a couple of times, and helps out a fellow superintendent who might need a little more experienced help in the shoulder seasons. 

What Led Me Here

Aaron Butler, Onwentsia Club

PHOTO CREDITS: VARIOUS

My name is Aaron Butler, I'm a recent graduate from Iowa State University and new member of the MAGCS. Being right out of college and having three successful internships under my belt, I was really excited while looking for a job as an Assistant. Although I was excited to start working, I knew it was going to be a far more important task than finding a summer internship.

This was the beginning of my career.

When I arrived at Iowa State, I had never worked on a golf course before, and had zero experience with the equipment we use on a daily business. I knew that I needed to intern somewhere I could learn the equipment, get a lot of hours under my belt, while seeing what the work environment was like at a highly maintained golf course. Because I grew up in a small town in Central Illinois, I wanted to venture out and see a different part of the country. I had no idea how large need for interns was when I first looked at job postings just a few months into school.

As I looked, I thought none of these top 100 clubs would hire a student as an intern who had zero experience. I first applied to Pikewood National Golf Club in West Virginia and accepted an internship right off the bat. Not very many people know about this course, but it is one of the most picturesque golf courses in the United States. I had no idea

what I was going to be getting myself into, but that first summer I learned the ethic needed to work at a highly maintained golf course. The hours were long but I was glad I decided to go out of my comfort zone and get exposed to this high-class operation. When I left Pikewood, I definitely had a better idea of what I wanted for my second internship. I had learned all of the basics on running equipment and daily procedures working on a golf course, now I was looking to get more responsibility and be in greater direct communication with the superintendent and assistants to learn about the daily and weekly planning within the operation. After I received advice from Dr. Christians, my turf professor at Iowa State, I decided to intern at Spring Hill Golf Club outside of Minneapolis. I couldn't have asked for a better internship at this time in my career. I was involved in every spray/fertilizer application on the course. I was involved in the weekly meetings with the management staff too and learned what to expect during each week, and received constant feedback and conversed daily with the two assistants and Tim Johnson, the GC Super-



Tim Johnson and I standing on the 16th hole at Spring Hill Golf Club.

intendent. That summer helped me understand what it takes to be a successful Assistant.


With just one internship left before graduation I knew I wanted to do something different. After working with nothing but cool season turfgrasses, I thought it would be a great idea to get some experience with some warm season turf. Not only did I want to work on a nice course, but more importantly, I wanted to work somewhere with a respected superintendent who would mentor me as I progressed in the profession. After sharing this desire with Dr. Christians, he led me to the Country Club of Birmingham in Alabama. Lee McLemore is the Director of Agronomy at the CC of B, a highly-skilled superintendent and known for his mentorship. Dr. Christians came through again with another great match; though the greens at the CC of B are A1-A4 Creeping bentgrass, the fairways are 419 Bermuda and tees are Diamond Zoysia. I was able to experience warm season turf with the added benefit of growing Creeping bentgrass in the transition zone. Furthermore, The Country Club of Birmingham is a 36-hole operation, and offered the opportunity for me to experience how a much bigger operation works. Throughout the summer I made great relationships with the superintendents, the assistants, and the other intern on staff.

One of my favorite parts of this industry is how easy it is to get connected to so many different people at golf courses in the same area and even across the country. After working at three different golf courses, I love getting to catch up with the people who I have worked with, sharing our experiences and strengthening our relationships.

Upon graduation and with all three very different intern experiences I knew I was ready to take on an assistant position. Finding this position was more "permanent" and mattered more. First and foremost was to find a golf course superintendent who would mentor me through the ins and outs, way past what an intern is exposed to throughout the course of a few summers. Knowing what and how I learned from Tim Johnson and Lee McLemore, I realized this process was very important to my long-term successes in this business.



Lee McLemore and I overlooking the 18th hole at the Country Club of Birmingham

When searching for my first Assistant position, I was patient to make certain it was a good fit for me. With each step in my career I've had specific goals to learn along the way. I'm still focused on learning the profession. I was very lucky finding and obtaining the Assistant position at Onwentsia Club. I couldn't be happier with where I am today. Scott Vincent has already had a great influence on me and gives me more fuel for my love of this industry. I look forward to continuing to meet more people in the area, and get involved as I continue my career in this great industry. 



Pikewood National Golf Club. One of the most challenging and picturesque courses in the country.

IT'S ALL ABOUT PLAYABILITY...

We will donate 1% of all September non-agency sales to the Wee One.



See you at Pine Hills



chicagolandturf

a Turf Ventures company

THE BullSheet



DATES TO REMEMBER

Aug 2019

August 13 – Deadline for applications to attend the 2019 Syngenta Business Institute held December 3-6 in Winston-Salem, NC.

August 14 – Michigan State University Turfgrass Field Day at the Hancock Turfgrass research Center in East Lansing, MI. Check out www.michiganturfgrass.org for more info.

August 15-18 – BMW Championship at Medinah Country Club, Steve Cook, CGCS, MG host superintendent.

August 20 – CAGCS Founder's Cup golf outing at Coyote Run Golf Course in Flossmoor, IL, Dave Ward host superintendent.

August 26 – The 19th Annual John Buck Golf Outing at Randall Oaks Golf Club in West Dundee, IL, Mike Sprouse host superintendent.

August 26-29 – The Illinois PGA Championship at Ruth Lake Country Club in Hinsdale, IL, Dan Marco host superintendent.

September 4 – MAGCS Monthly Meeting & Annual Golf Championship at Mistwood Golf Club in Rome-ville, IL, Ben Kelnhofer host superintendent.

September 16 – 16th Annual Wee One Fundraiser at Pine Hills Country Club in Sheboygan, WI, Rod Johnson host superintendent.

September 23 – Fox Valley Golf League's 25th Anniversary Outing at Blackberry Oaks Golf Course, Steve Holich host superintendent.

Happy August and welcome to our newest MAGCS members:

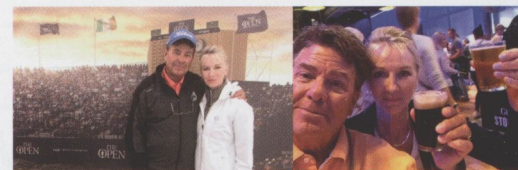
Jose Mejia, Boulder Ridge Country Club, Class DT

Scotty Reams, Crystal Tree County Club, Class C

Just want to clear something up—is it okay to check multiple weather apps just to find one that says it's 97 instead of 98 out, or is it crazy?

Condolences to the Fuchs family on the passing of Keith Fuchs, Jr. (son of Gleneagles CC superintendent **Keith** and Linda Fuchs) in late June.

If you were smart (or lucky), you didn't hang around these parts when the blast furnace was fired up. Take **John (JT)** and Pam **Turner** for instance—they packed their bags and headed to Ireland to take in the beautiful country, its beautiful weather, and that little golf championship thingie they had at Royal Portrush in July. And it turned out they even found a place to stay hydrated while they were out and about!



The Turners touring the Guinness brewery in Dublin

Also seen at Royal Portrush was our old buddy Curtis Tyrrell, CGCS, MG who can be found on numerous social media outlets with his "The Course Reports" podcasts, and whose most recent installment featured a walking interview with Royal Portrush course manager Graeme Beatt, who talks funny. Anyone who remembers Curtis being interviewed during the Ryder Cup at Medinah shouldn't be surprised at how professional and at home he is in front of a camera—keep up the great work!



Golf witticism of the month (from Chi Chi Rodriguez, aptly regarding a course in Ireland): The winds were blowing 50 mph and gusting to 70. I hit a par 3 with my hat.

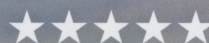
Happy Anniversary to the Toro Company, which is celebrating its 100th year in golf this year. On a related note, the company's



"The fairways are immaculate!"



"It was like playing on carpet."



"The course is in amazing shape."



"Best fairways and greens I've ever played on."



"Great lies in the fairways!"

When you can protect your fairways like your greens, you'll get rave reviews.

Golf's leading fungicide, Secure®, is now even better. New Secure® Action™ fungicide now includes a boost of *acibenzolar-S-methyl* (ASM), giving turf abiotic benefits such as increased drought tolerance, heat tolerance and quicker recovery. The enhanced formulation also offers improved dollar spot performance, including an increased control interval of 14-21 days.

Visit GreenCastOnline.com/SecureAction to learn more or contact:
Brian Winkel | 630-391-2170 | Brian.Winkel@Syngenta.com



Twitter @SyngentaTurf #Time4SecureAction

©2018 Syngenta. Important: Always read and follow label instructions. Some products may not be registered for sale or use in all states or counties. Please check with your state or local extension service to ensure registration status. Action™, Greencast®, the Alliance Frame, the Purpose Icon and the Syngenta logo are trademarks of a Syngenta Group Company. Secure® is a trademark of Ishihara Sangyo Kaisha, LTD. All other trademarks used herein are the property of their respective owner. MW 1LGG8011 09/18



DELIVERING EXTRAORDINARY WATER RESOURCE SOLUTIONS TO STRENGTHEN YOUR EVERYDAY OPERATING NEEDS

- Well Drilling & Rehabilitation
- Pump Repair & Installation
- Well & Irrigation Pump Maintenance
- Emergency Repair

Aurora, IL

Tom Healy

tom.healy@layne.com

630.897.6941

Beecher, IL

Jeff Stollhans

jeff.stollhans@layne.com

779.701.7667

Joe Eisha

joseph.eisha@layne.com

708.946.2244



layne.com

former CEO Ken Melrose and the Kendrick B. Melrose Family Foundation have donated \$500,000 to support GCSAA's First Green, an innovative STEM education program taught on golf courses.

I think that Monarch thing is working. Whether due to the work of groups like the Illinois Monarch Project, or the grass-roots efforts of golf courses, parks, and even home gardeners, it sure seems like there are more Monarch butterflies to be seen this summer than in the past few, doesn't it? I look forward to seeing if the data collected supports this observation.



At the end of the month on the 29th, the Illinois Landscape Contractors Association (ILCA) is holding its Turf Education Day at the Joseph Regenstein, Jr. School at the Chicago Botanic Garden in Glencoe. The TED offers a full-day intermediate-to-advanced overview of lawn and turfgrass care, and will feature several speakers with whom we have become very familiar, like **Dr. Tom Voigt**, Dr. Roch Gaussoin, Chip Houmes from Precision Labs, and more. To register, go to www.ilca.net

Q: What are the most comfortable chairs at **Jeremy Turton's** course?

A: Chevy Chase lounges.

It was bound to happen—with the popularity of golf course dog calendars, it was only a matter of time until the big boys jumped on the band wagon. To wit, Golf Digest has published its list of Favorite Golf Course Dogs, and our association had a very nice showing. **Vince Dodge** and his yellow lab Boomer (The Wilderness at Fortune Bay), **Dan McDonald** and Keith the border collie (Orchard Valley GC), **Andy Weadge** and greater Swiss mountain dog Tank (Whisper Creek GC) and **Kyle Wiebenga** and his blue heeler Chief (Deerpath GC) all received mention last month. Congratulations!



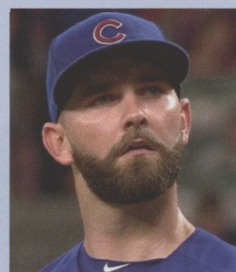
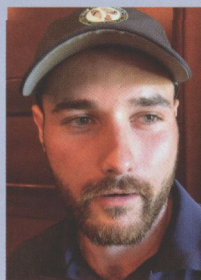
August's "Clavin-ism:" Did you know—it's a little-known fact—that a condor (four under par) hole in one has been recorded on only four occasions? It's true, and they mostly have happened on horseshoe-shaped holes that can be cut off. However, the longest recorded straight drive hole-in-one was 517 yards on the par 5 ninth hole at Green Valley Ranch

Golf Club in Denver, CO in 2002, aided by the thin air due to the high altitude. So there.

"It seemed like such a great idea at the time..." Turns out encouraging golfers to hit balls into Lake Michigan from the 12th tee at Arcadia Bluffs wasn't such a hot idea after all. After being alerted to language on the club's website that suggested golfers first "launch a ball" into the lake "on purpose" when playing the 12th hole, the Detroit Free Press commissioned a diver and reported that hundreds of balls were found in the water. Environmentalists then got involved, citing the potential toxicity of decaying golf balls, so the club has since removed all references to the practice from its website and is now discouraging players from doing it. Fun fun fun 'til a fish gets sick.

Tyler Chatwood pitches for the Chicago Cubs (though you'd hardly know it by the frequency he's used). **John Hardee** pitches IN as assistant superintendent at Chicago Golf. A connection?

MIDWEST Doppelgänger



John Hardee or Tyler Chatwood?
Hardee works way more and has a lower ERA.

July was a good month for Knollwood Club and superintendent **Drew Barnett**! Golfdom magazine prominently featured Drew and the club not once but TWICE last month. First, Drew was the "centerfold" superintendent in the magazine's 19th Hole column, where they do a quick Q and A with the featured superintendent, always beginning with "What can I get you?" in regard to his drink of choice. A week later, Golfdom, through its social media platforms named Knollwood, designed by H.S. Colt and C.H. Alison and founded in 1924 its Course of the Week. High praise and well-deserved!



FROM SMITHCO AND TEEJET® TECHNOLOGIES

STAR COMMAND 2.0

The Next Generation of Sprayers



Burris
EQUIPMENT
burrisequipment.com

EXPERIENCE TOTAL CONTROL

- Control droplet size for greater efficacy independent of rate or speed.
- Spray from 2 to 10 mph. Up to twice as fast as other sprayers.
- Get the ongoing support of Smithco and TeeJet®.
- Plus the dependability of the only GPS sprayers tested over 4 years by superintendents.

Start with the 2 finest sprayers Smithco makes. The Spray Star 3180 and 2000. Both factory-fitted with a DynaJet® Nozzle Control System and Aeros Field Computer from TeeJet.

Smithco.com

WAUKEGAN

2216 N. Greenbay Rd.
Waukegan, IL 60087
847.336.120

LAKEMOOR

27919 Concrete Dr.
Ingleside, IL 60041
815.363.4100

JOLIET

2001 Cherry Hill Rd.
Joliet, IL 60433
815.464.6650



The fungicide that holds strong for many moons.

Introducing Posterity® fungicide, the most active SDHI in the turf market that elevates the control of key diseases including **dollar spot** and **spring dead spot**. Posterity delivers power that lasts, holding stronger for up to **28 days** of dollar spot control, and setting a new standard for spring dead spot control. With Posterity, you can manage the toughest and most prevalent diseases with confidence.

Visit GreenCastOnline.com/Posterity to learn more or contact:
Brian Winkel | 630-391-2170 | Brian.Winkel@Syngenta.com



Posterity
Fungicide

syngenta

#Time4Posterity

©2018 Syngenta. Important: Always read and follow label instructions. Some products may not be registered for sale or use in all states or counties. Please check with your local extension service to ensure registration status. GreenCast®, Posterity®, the Alliance Frame, the Purpose Icon and the Syngenta logo are trademarks of a Syngenta Group Company. All other trademarks used herein are the property of their respective company. 1LGG8011 08/18



Add divot repair to the growing list of "Things Beer Cures." At the Eastmoreland Golf Course in Portland, OR four league players took it upon themselves to remedy the increas-

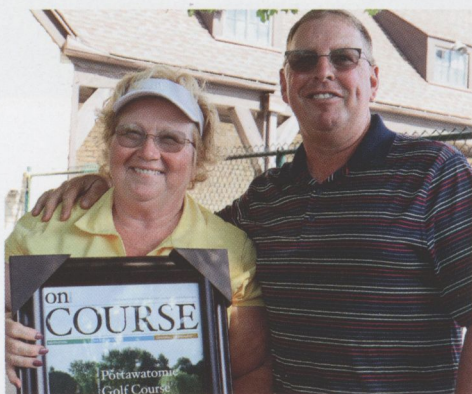
ing divot problem. Armed with bins of divot mix provided by the maintenance staff, the foursome regularly repairs divots not only while they play, but returning in the evening, filling more than 1,000 divots a week for the past 18 months! Their compensation for doing this? Free beer. As Homer Simpson says, "Mmm beer. What CAN'T it do?"

OK, why not? Surprise sex is the best thing to wake up to. Unless you're in prison.

Hopefully you were able to participate in the July golf events that were offered up. **Dan Stahl** and Orchard Valley Golf Course in Aurora hosted the Wyatt's World Golf Outing through the Wee One Foundation on the 22nd, and **Denise Gillett-Parchert** and Pottawatomie Golf Course in St. Charles hosted our MAGCS 9-Holer on the 11th. Both events were a nice diversion from work, and attendees had a great day at both. @



Wyatt Stahl and his Mom, Janna took a moment before golf to say thanks to everyone for coming out and supporting the Stahls. All the proceeds from the event help offset costs with Wyatt's extra education and programming. It's great to see him grow each year!



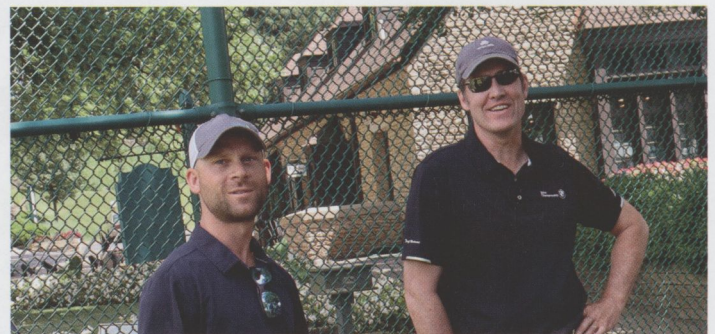
Denise and Todd Schmitz with the ceremonial framed OC cover from the July 9-Holer.



Chris Cameron, Denise, Jeff VerCautren and Jeff Leuzinger.



The July event has become a mid-summer celebration where members get together in an informal setting and enjoy some time together. (L to R) Greg Johnson, Dan Tully, Matt Giermack, Kevin DeRoo, someone, Nick Baker and Don Ferreri)



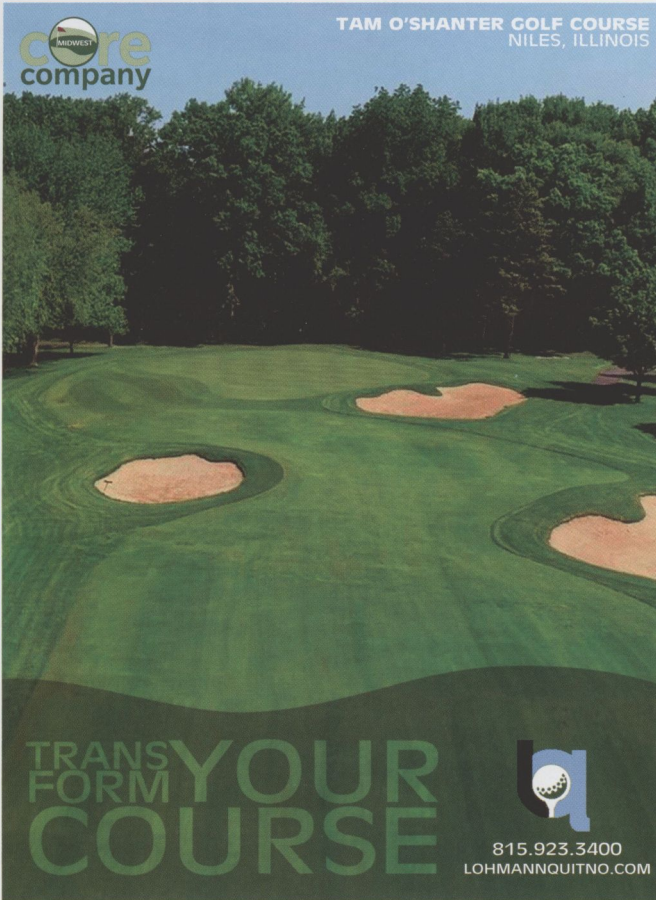
Steve Kellerman and Darrick Robbins.



It was a picture perfect day at Pottie!

core
company

TAM O'SHANTER GOLF COURSE
NILES, ILLINOIS



TRANSFORM YOUR COURSE

815.923.3400
LOHMANNQUITNO.COM

Demanding Jobs Demand Kubota.




RTV-X1140 Utility Vehicle

- 24.6 HP* Kubota Diesel Engine
- K-Vertible™ Second Row of Seating and Expandable Cargo Bed with Hydraulic Lift
- 1,300 lbs. Rugged Towing Capacity

ZD1211 Commercial Zero-Turn Mower

- 24.8 HP* Kubota Diesel Engine
- All-New 60" or 72" Kubota PRO Deck
- Deluxe Reclining Suspension Seat with Lumbar Support




SSV75 Skid Steer Loader

- Tier 4 Final Engine with 74.3 Gross HP* at 2600 RPM
- Spacious Cab Designed to Reduce Stress and Fatigue
- Available Hard-Working, Performance-Matched Attachments and Implements

M5-111 Deluxe Utility Tractor

- 105.6 HP* Tier 4 Final Kubota Diesel Engine
- Available Climate-Controlled, Ultra Grand Cab II
- Kubota-Exclusive, Bevel-Gear Front Axle for Easy Handling and Maneuverability

Martin Implement Sales, Inc.

18405 115th Avenue
Orland Park, IL 60467
(708) 349-8430

kubota.com

*For complete warranty, safety and product information, consult your local Kubota dealer and the product operator's manual. Power (gHP/kW) and other specifications are based on various standards or recommended practices. Kubota Tractor Corporation Markets a Full Line of Tractors and Construction Equipment Through a Nationwide Network of Over 1,000 Authorized Dealers. Optional equipment may be shown.

Kubota

core
company

f t i @AdvancedTurf

© Kubota Tractor Corporation, 2016

advancedturf.com

ADVANCED TURF SOLUTIONS®

Fertilizer, chemical, and seed solutions for your golf course.

Illinois - New Location!

24317 W 143rd Street, Unit 103
Plainfield, IL 60544
(815) 556-1370

Illinois

1225 Lunt Avenue
Elk Grove Village, IL 60007
(847) 258-5904

Wisconsin

2556 Advance Road, Unit C
Madison, WI 53718
(608) 709-1331



Todd Fregien
• @ToddFregien_ATS
(414) 949-1089
tfregien@advancedturf.com



Rusty Stachlewitz
• @RustyStack
(630) 779-0761
rstachlewitz@advancedturf.com



Craig Shepherd
• @Shepdog2101982
(563) 213-1632
cshepherd@advancedturf.com



Mike Werth
• @werthashot
(608) 214-7011
mwerth@advancedturf.com

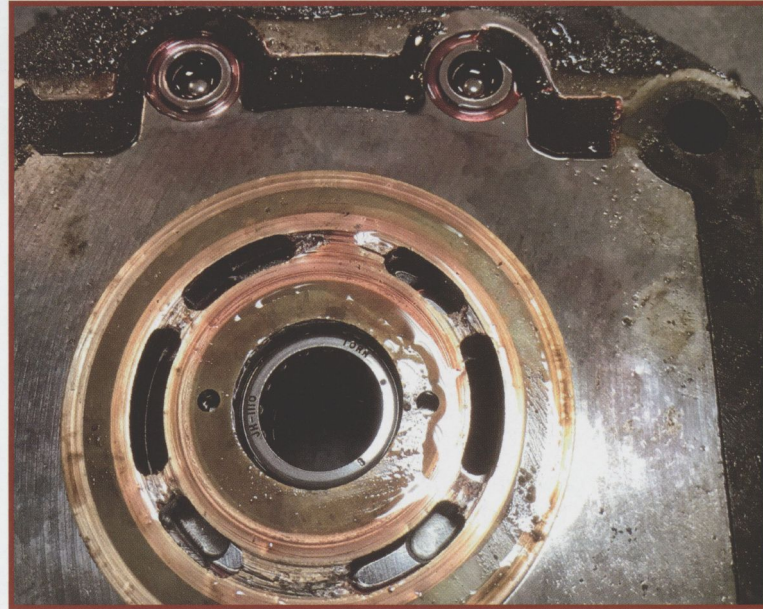
Equipment: Toro Sand Pro 2020

Year: 2010

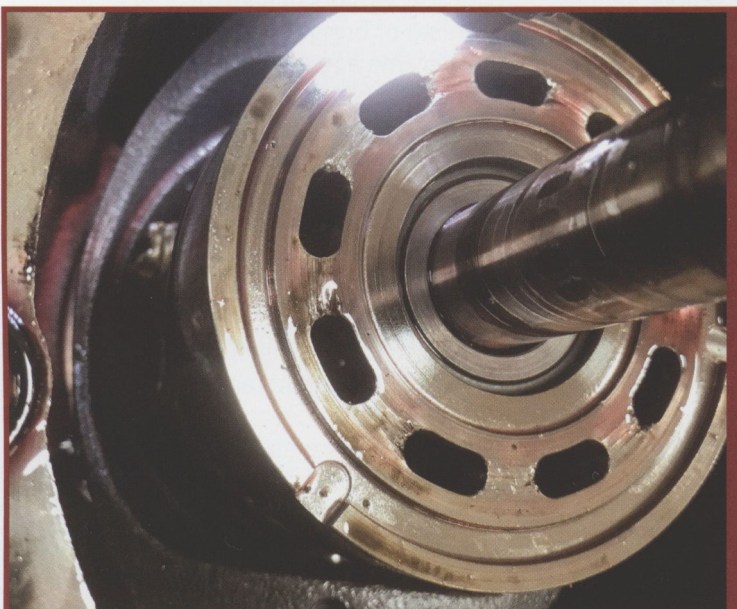
Symptom: Hydraulic Oil Leak

We had a 2010 Toro Sand Pro 2020 with 4,596 hours on it develop a hydraulic leak on a Sunday while out on the course. The crew was able to get it on a trailer and back to the shop. Monday when Bob was inspecting it, he found that the hydraulic pump rear seal had come out. Bob looked at the seal for damage, none was found. The shaft had no play in that would have indicated a possible bad shaft bearing. With nothing obvious noted, he installed another seal and started it up. After about three minutes of running that seal had come out of the pump also.

Excessive pressure was being built up inside the pump causing the seal to come out. With the seal coming out that quickly we could not perform and kind of pressure or flow tests on the pump. Bob inspected the case drain hose for blockage, none was found. He inspected the filter housing, no issues found there. The next step was removing the pump for disassembly. After removing the rear cover to inspect the charge pump, we found it scored up along with the mating surface on the piston group. Upon further examination we noticed the piston group had damage. We removed the piston group for inspection. As the pictures will show we had some major failure happen. Time for a new pump.



Getting closer, the mating surface had some scoring on it.



The shaft looked ok, but the seal kept coming out not allowing us to test for pressure or flow.



Hello, mr. piston or part of mr. piston. Time to recycle you.

Got a tech tip or solved a problem? Send it to luke@magcs.org

SUPER-N-site

Ben Kelnhofer

Mistwood Golf Club

Adam Charters, Seven Bridges Golf Club

PHOTO CREDITS: BRIAN WALTERS

Ben Kelnhofer doesn't consider himself to be in the golf course business, but in the business of providing an experience. That experience is a beautiful Scottish style golf course in the Chicagoland area.

Ben grew up in the small town of Milford, Illinois where he played high school basketball. Following high school graduation, Ben had his eyes set on becoming a teacher. He attended Parkland College in Champaign, Illinois to study education. Between splitting his time studying and playing college basketball, Ben took a summer position at Lakeview Country Club under Dave Fox. Aside from enjoying gardening with his mother while growing up, Ben had no experience in the landscaping industry, but it only took one summer on the grounds crew for him to completely reconsider his plans of becoming a teacher. In 1997, Ben transferred to Danville Area Community College to pursue a degree in turf. Following graduation, he went on to take his first position at RedTail Golf Club in Crystal Lake under Pat McDonagh in 1998. In 2004, Ben moved to

the Chicagoland area to take on the assistant superintendent position at Mistwood Golf Club in Romeoville under Dave Drendel and took over as superintendent in 2008.

In 2004 the course saw new ownership under Jim McWethy, who started building the foundation for a new brand for the course as well as needed renovations. What began as moving a green to make accommodations for the clubhouse quickly became Golf Magazine's "Renovation of the Year". The two year, multi-million dollar renovations also took home the distinguished recognition as one of Golf Digest's "Best New Courses" and one of Golf Range Magazine's "Top 50 Public Ranges". Working alongside architect Ray Hearn in 2011 and 2012, the dream of bringing a Scottish style course to the Midwest slowly became a reality. Installing twenty St. Andrew's style sod wall bunkers truly brought a unique Scottish feel to the course. With five different tees, the course has the ability to play 7,005 yards from the tournament tees or 5,332 yards from the forward tees. In 2013 the state of the art performance center was completed on the course for lessons, fittings, and repairs.

Overseeing such a drastic change to the course, the one thing that seems to never change for Ben is his staff. Ben relies heavily on his assistant Tony Smith and turf technician Brian Kolar to run such a tight ship over the years at Mistwood. Ben credits his staff for being able to maintain the course and properties to their spectacular form. In Ben's eyes, staffing is not a hardship because he has created such strong sense of value in his employees, along with a positive work environment that has resulted in retaining over 90% of his 16



The Kelnhofers: Kim, Landon, Ben, Quinton, and David.



man seasonal staff over the years. This crew is the embodiment of the motto "Scottish influence, American made". There is no need to purchase standard equipment such as tee markers and flagsticks as Ben's crew transforms a portion of the shop into a wood working area in the winter. This enables them to craft just about everything on the course, allowing for the staff to truly create the Mistwood brand through the use of their custom color scheme and logo.

In addition to Mistwood Golf Club and McWethy's Tavern, Ben and his staff oversee Mistwood Golf Dome and McWethy's Sports Bar in Bolingbrook, the Green St. Grill in Bensenville, as well as The Grand Ballroom at Joliet Union Station. The constant challenge of maintenance for several locations can create quite the headache. Ben credits his dedicated staff, as well as their outstanding owner Jim McWethy for their success.

The course is home to several events including the Phil Kossin Illinois Women's Open and Pro-Am, several golf outings, and even three 5k marathons. The Taco Trot 5k sup-

ports the Ronald McDonald House, the Ruff Run 5k Doggie Dash supports Hopeful Tails Animal Rescue, and the Hole in Run 5k supports Autism speaks, which is a foundation Ben takes great pride in as his youngest son is on the autism spectrum. When he isn't running back and forth between properties, Ben enjoys spending relaxing time with his wife of 15 years, Kim. Their three boys David, Quinton, and Landon keep them very busy with a variety of sports, hobbies, and David's band "Arbor Creek".

With such a vast array of things going on at multiple properties at once, you would imagine it nearly impossible to keep a level head or even your sanity, but for Ben it is second nature. Between all of the hats that he wears, he says that first and most importantly is being a superintendent. Even with a late start in the industry, along with jumping into the deep end with a full course renovation to bring Scottish golf to Chicago, Ben excels at what he does. He goes beyond providing a top tier golf course; he provides an experience that is unlike anything else. @



The 16th hole at Mistwood Golf Club play 362 yards from the tips that demands a straight tee ball, a hybrid is usually the play.

Keeping up Appearances

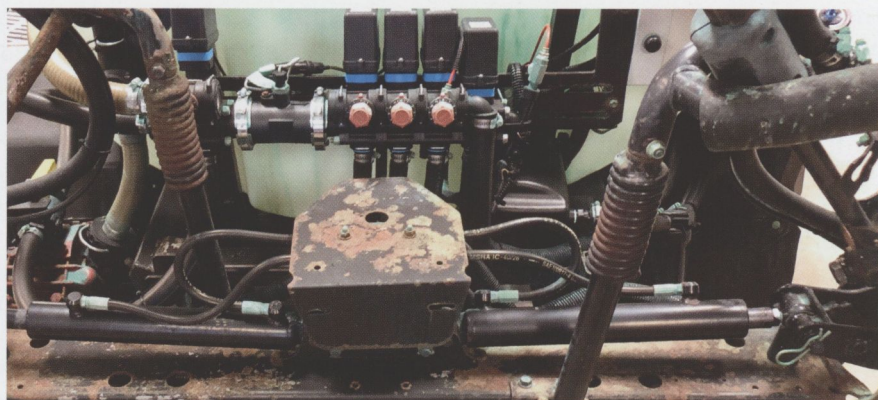
Justin W. Prescott, Kenosha Country Club

Our equipment is essential to the day to day operations. The routine checks, preventative maintenance and repairs all play a role in maintaining a fleet capable of presenting a quality of turf that is healthy, well-manicured and has an inviting appearance. But what is the appearance of the equipment?

Appearance of equipment can affect how operators handle and clean their machines – most operators will care more for equipment that looks good. The look of the equipment is a direct reflection of the attention to detail and abilities of the technician(s) charged with maintaining the machines. Furthermore, a well maintained fleet can influence future purchases; proving capital investments will be meticulously maintained.

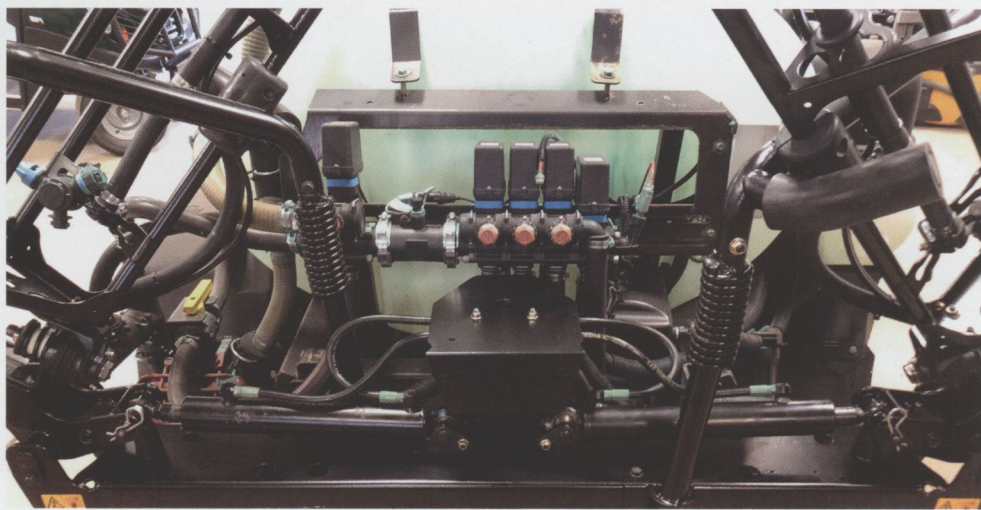
Last winter, while in for servicing, I took note that a few of our machines had cosmetic blemishes. The some of the flaws were cracked plastic body components on utility vehicles, peeling and damaged brand/warning decals which were easily fixable – budget permitting.

Still superficial, I took on a larger job with our spray unit. With the amount of use and the corrosive nature of some of the products used, all three boom assemblies had seen better days. As a cost-effective solution to replacement, the booms and all components were disassembled and where applicable taken to a local vendor for powder coating. The booms were powder coated, the boom hinges were disassembled and rebuilt, all hydraulic components were removed and checked. Everything was reassembled with new fasteners, components and well lubricated pivot points. Having everything removed from the machine presented a good opportunity to replace all of the hoses, check all of the turrets, repairing or replacing as needed, and readying the machine for spring.



BEFORE

Cosmetics will always be preceded by the proper preventive maintenance and repair of a fleet. Taking that into consideration, completing a project like this, if a viable option, not only restores the appearance of the machine but also prevented any downtime from corroded or aging components failing when the machine is needed most.



AFTER

SPRAYABLE TURF NUTRITION, REDEFINED.

Combining HCU™ and Foltec® SG Minors creates an ideal tank mix of nitrogen, humic acid, and minor elements, and delivers exceptional performance with strong economics in use.

Dave Louttit | 312-909-4909
AndersonsPlantNutrient.com



©2019 The Andersons, Inc. All rights reserved. The Andersons logo and Foltec are a registered trademark of The Andersons, Inc. HCU is a trademark of The Andersons, Inc. E19



America's Premier Golf Course
Builder & Renovation Specialist
www.wadsworthgolf.com



CLASSIC RESTORATIONS
MAJOR RENOVATIONS & MINOR REMODELS
STORM WATER MANAGEMENT



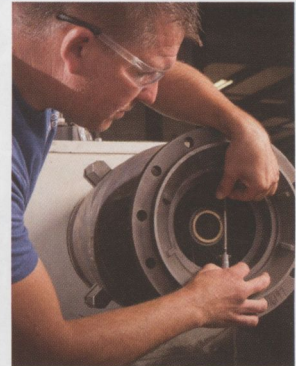
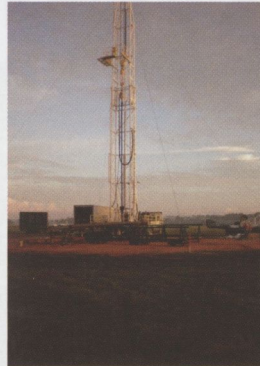
815.436.8400
Plainfield, Illinois

SINCE 1958

your water supply experts

water well services

- well/pumps emergency maintenance services
- well rehabilitation & maintenance program
- pump sales & maintenance
- well drilling
- water system engineering/construction
- hydrogeological services



Contact Us:

888.769.9009

Oconomowoc, WI • Elburn, IL

www.waterwellsolutions.com



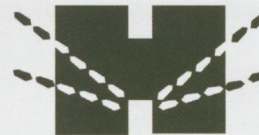
Water Well Solutions is now
SUEZ Water Advanced Solutions

Sand is Important. Solutions are Essential.

**Key support for your
topdressing, bunker &
construction mix decisions.**



Waupaca Sand & Solutions
Sales: Chris 630-336-7626
ccameron@waupacasand.com
Customer Service: 715-258-8566
www.WaupacaSand.com



**HALLORAN &
YAUCH, INC.**
IRRIGATION
SYSTEMS

SINCE 1967

28322 BALLARD DRIVE
LAKE FOREST, IL 60045

847-281-9400 – Telephone
847-281-9780 - Fax
service@hyirrigation.com

Irrigation Installation & Repairs

Pump Station Start Up & Replacement

Irrigation Wiring Troubleshooting

Irrigation Pipe & Supplies

Drinking Fountains and HDPE Fusing

Drainage & Aerators

S
O
D

Sod That Fits Your Course To A Tee

All varieties available as washed sod, traditionally cut sod or big roll sod.

Your Single Source for:

- Pennncross™ Bentgrass Sod
- Pennlinks II™ Bentgrass Sod
- Penneagle II™ Bentgrass Sod
- 007™ Bentgrass Sod
- XL 2000™ Low Mow Bluegrass
- 60-40 Fine Fescue KBG Blend
- Black Beauty™ Tall Fescue

We can custom grow to your specifications, please inquire.

H&E SOD NURSERY inc. 

13246 E. 1250 N. Road
Mokenca, IL 60954

815-472-2364

1-800-244-7200

WWW.HESOD.COM



NELS JOHNSON

TREE EXPERTS

Since 1930



CONFIDENCE



nelsjohnsontree.com

RESULTS WORTH THE SWITCH


Anuew™

3 REASONS ANUEW™ PGR
PERFORMS BETTER ON BENTGRASS
— TRIAL PERFORMANCE VS THE COMPETITION —

Long-lasting and more active
at lower application rates

Only late-stage inhibitor to evenly
regulate Poa in mixed stands

Fast improvement of turfgrass
density and appearance

// SEE RESULTS AT NUFARM.COM/USTURF



 **Nufarm**

Grow a better tomorrow

©2019 Nufarm. Anuew™ is a trademark of Nufarm.

BENT GRASS SOD

**CUT FRESH
DELIVERED FAST
INSTALLATION AVAILABLE**



Your source for pickup & delivery of fresh-cut Bentgrass sod.
Contact us for wholesale pricing in your region today!

630.669.0384 Paul Carlson, President
847.404.4346 Pete Kiraly, VP of Production
www.GreenSourceUSA.com



Reinders

Solutions & Supplies For The Green Industry



Since 1946, The Plant Food Company has been supporting professional growers like you through their premium products. Now Partnering with Reinders, our team of perfectionists will work closely with you to craft products into problem-solving solutions for a more holistic plant health experience.



Tyler Wesseldyk

516.984.3545
twesseldyk@reinders.com

Bruce Woehrle

262.372.5923
bwoehrle@reinders.com

Kati Bernardy

262.945.9133
kbernardy@reinders.com

Rob Sheehan

(810) 407-1739
rsheehan@reinders.com

111 Lexington Dr, Buffalo Grove, IL 60089

SAVE AN
ADDITIONAL **1% OFF** ON
REINDERS.COM

First Green Gets Some More Green

Shane Conroy, GCSAA Field Staff

21-year GCSAA Class-A member Connor Healy hosted the first ever First Green field trip in the state of Illinois this past May when he welcomed students from Chicago Public Schools to Conway Farms Golf Club. Despite a wet day (go figure this year) the field trip was a huge success, with participants and volunteers passing along positive comments from the event. Hot on the heels of this successful field trip, the First Green is making headlines again thanks to Ken Melrose, former CEO and chairman of the Toro Company.

The Kendrick B. Melrose Family Foundation has donated \$500,000 to the Environmental Institute for Golf (EIFG), the philanthropic organization of the Golf Course Superintendents Association of America (GCSAA). The endowment will support First Green, which provides hands-on STEM (science, technology, engineering and math) education at golf courses. The Melrose Family Foundation is supported by Ken Melrose, who retired from the Toro Co. as CEO in 2005 and from the chairman position in 2006. That same year he formed Leading by Serving, LLC, a company whose mission is to advance the principles of servant leadership in business organizations.

The First Green was founded in 1997 in the Pacific Northwest and officially became part of the EIFG in 2018. First Green is the only STEM education and environmental outreach program that uses golf courses as learning labs. Field trips average 75 students who not only learn about science and the environment but are also exposed to the game of golf as well. For most students, this is their first-time stepping foot on a golf course. In the year since GCSAA took over leadership of First Green, more than 2,000 students across the country have partaken in First Green field trips.

"As the child of an educator, I am pleased to have the opportunity to support a program that provides hands-on education while introducing students to the many benefits of a golf course," Melrose said. "Under GCSAA's direction, First

Green has expanded nationally and is reaching more students than ever before. STEM education is vital in preparing students for the future, and I am proud to be a part of that." Melrose's mother, Dorothy Lumley Melrose, taught math, English and public speaking at Memorial Junior High School in Orlando, Fla., in the 1940s and 1950s. In 2014, Melrose honored his mother's memory with the creation of the Dorothy Lumley Melrose Center for Technology, Innovation and Creativity at the Orlando Public Library.

This is the third large gift to GCSAA and the EIFG from the Melrose Family Foundation. In 2012, the foundation gave \$1 million to endow the Melrose Leadership Academy, which focuses on professional development for golf course superintendents through opportunities to attend the annual Golf Industry Show. Since it began, 113 superintendents have experienced the Melrose Leadership Academy. In February, a second \$1-million gift was announced to create the Melrose Equipment Management Endowment. The endowment will have four focus areas: continuing education, a certificate program, growing membership in GCSAA and the Melrose Equipment Management Experience, which will bring GCSAA-member equipment managers to the GIS for leadership and education sessions.

"GCSAA is truly blessed to have Ken Melrose as a good friend." GCSAA Chief Executive Officer Rhett Evans said. "His generous gifts have made a difference in the professional lives of superintendents and equipment managers and have helped us fulfill our mission of serving our members and advancing the profession. Now, he is helping us achieve the third part of our mission, which is enhancing the enjoyment, growth and vitality of the game of golf. Countless school children around the country will be the beneficiaries of Ken's latest philanthropic act of kindness." @



Better Billy Bunker
Midwest
Durable • Lifetime • Guaranteed

Core Midwest Company

Leibold Irrigation, Inc.
18950 County Hwy 5 West East Dubuque, IL 61025
Office: (815) 747-6024 www.li-inc.com

Irrigation **Golf Construction** **Service**

Jim Boyer (815) 747-6024 **Kevin Stieneke (563) 564-9333** **Mike Skopik (563) 564-6908**
Bill Michalski (563) 845-9724

Photo Courtesy of Bob O'Link GC & Scott Pavliko



Seaborn Flags

Buy 18 Custom Embroidered Flags, Receive 6 Free

Order today from **Pendelton Turf Supply**

Kristin
414.640.2241

Clark
608.228.1782

Lemont Paving Co.

MURPHY'S • EST. 1957



Asphalt Paving and Sealing

Tracy Murphy
11550 Archer Ave.
Lemont, IL 60439
630-257-6701 phone
630-257-5194 fax

www.lemontpaving.com

COMMERCIAL • INDUSTRIAL • RESIDENTIAL • CART PATHS

CHAD O. HAUTH
AREA SALES MANAGER

Crop Science Division
Bayer CropScience LP
Environmental Science

39W355 Weaver Lane
Geneva, IL 60134
Mobile: 1-630-945-2123
chad.hauth@bayer.com
www.bayer.com



PRECISION
LABORATORIES

Results. Expect it!

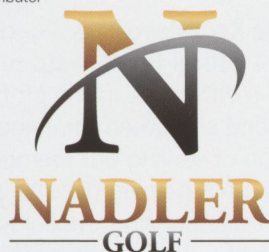
www.precisionlab.com

CHIP HOUMES
District Manager

Precision Laboratories, LLC
1429 S. Shields Drive
Waukegan, IL 60085
(800) 323-6280 Office
(847) 596-3017 Fax

Mobile: (217) 260-6943
Twitter: @precision_labs
choumes@precisionlab.com
80 N 2500 E Road, Hoopeston, IL 60942

Authorized
Club Car
Distributor



ERIC NADLER
President

2700 North Farnsworth Avenue
Aurora Illinois 60502
630.898.1616
630.898.1638 Fax
eric@nadlergolf.com
www.nadlergolf.com

Golf Cars • Utility Vehicles
Sales • Service • Leasing

NEED SOD?



Payne Sod Farm, Inc.
815-468-6400
www.paynesodfarm.com

DAVEY CONTRACT GRINDING SERVICE

"With Davey, they handled the scheduling, supplied the operator and loader, and ground the material which made it very easy. I'm definitely bringing them back next spring."

~ Scott Finnander, City Forester,
Village of Schaumburg

CALL TODAY!

630.326.5224
chicagomulch@davey.com



DAVEY
Proven Solutions for a Growing World

RIVERWALLS

27 W 930 Industrial Drive, Lake Barrington, Illinois 60010

GOLF COURSE ENHANCEMENT

Shoreline Stabilization, Creek Crossings
Stream and Spillway Re-Construction
Arched Stone Bridges

Member: G.C.B.A.A.
M.A.G.C.S.

DARRYL SCOTT BURKETT

MOBILE: 847-366-5400
E-mail: riverwalls@hotmail.com

Service Disabled Veteran Owned Business
USMC 67-68

John "JT" Turner

Territory Manager,
Aquatrols

☎ 1-630-215-6110
☎ 1-630-443-7807
✉ jturner@aquatrols.com

📍 40W665 Campton Woods Drive
Elburn, IL 60119



Chicago's Leading Industrial Cleaning Equipment Dealer



- Pressure Washers
- Detergents
- Parts
- Service



www.highpsi.com

630-893-0777

75 Brandon Drive, Glendale Heights, IL 60139



A Textron Company



CUSHMAN



Brian Termini
Fleet and Specialty Sales
Chicago/Northern Illinois

cell 847.204.8373
fax 847.890.6698
email btermini@textron.com

**DON'T MISS THE
JOHN BUCK MEMORIAL
GOLF TOURNAMENT**

**Randall Oaks Golf Club
August 26, 2019**

register through J.W. Turf
proceeds help fund the Midwest Scholarships



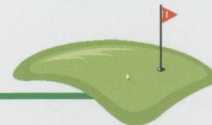
Common Sense Turf Management

Renny Jacobson
815.791.7404 | renny@csturf.net

TURF SPECIALISTS

Dirt~n~Turf

Consulting



DAVID MARQUARDT ~ CONSULTING AGRONOMIST

542 Clark St.
Hinckley, IL 60520
Dave@dirt-n-turf.com

Cell: 630-251-1511
Home: 815-286-3005
Fax: 815-286-9233

SOIL ANALYSIS EXPERTS

Balanced Soil Means Healthy Turf

V. J. ZOLMAN

Associates

56 YEARS OF SERVICE

Soil, Water, Tissue Analysis, USGA Physical Analysis
Audubon/Environmental Analysis

Tel: 630-964-9702

Fax: 630-964-9769

7100 Blackburn Avenue, Downers Grove, IL 60516
www.soilanalysisexperts.com
Lab Services by Brookside Laboratories, Inc.

BASF

We create chemistry

Andy Morris

Sales Representative

BASF Turf and Ornamental Team

Cell: 309-264-9942

@amorris_andrew

Scotts ProVista: A Quantum Leap in Turfgrass Genetics

Jim Pedersen, Hughes Creek Golf Club



Dr. Christian Baldwin discusses the process Scotts went through to bring ProVista to market.

ProVista is a hybrid bluegrass. Scotts started the ProVista project in 1996, since then they've spent nearly \$115,000,000 in research and development redefining Kentucky Bluegrass. When compared to other Kentucky bluegrasses, ProVista requires half the mowing, will endure areas of shade, uses less Nitrogen and offers complete weed control. The best part is that it is a Kentucky bluegrass and has all the benefits of this species of color, density, texture, tillering, root development and recuperative ability.

The first step in the breeding process was to create an Embryogenic Callus Development. The breeders injected the selected genes into the callus and grew it in a petri dish. In 2 to 3 months they had 20,000 plants. To reduce the number of viable plants, they put in glyphosate. That brought the amount of plants down to approximately 5,000 true hybrids. Those were taken for field research and development.



Through field testing they reduced the 5,000 down to 500 eventually finding the 10 to 15 best plants. Using multiple locations and differing climates and inputs such as full sun, shade and minimal maintenance, they reduced the number to four or five plants. These plants were allowed to go to seed and then replanted. Over the course of the next five years they were able to reduce it down to one plant.

The Benefits

Half the Mowing: Normal growth regulators such as Primo, Cutless, and TrimIt inhibit (GA) gibberellic acid growth, which is plant hormone responsible for cell elongation. When GA is inhibited plant cells do not elongate, internodes shorten, causing plant growth reduction. Scotts overexpressed GA2ox3, an inactive form of GA. Overexpressing increases the activity of that particular GA. They found that it gave the turf a darker color, lateral

growth, tillering, and root development.

Using the one-third rule for mowing, Scotts chose a three-inch mowing height so when the turf reached 4.5 inches, it was time to mow. They found ProVista was being mowed every 14 days, while their conventional Bluegrass was being mowed every four days. Imagine what your crew could do every other week when they are not mowing the rough?

Shade and Fertility: When you think of shade tolerant grasses, normally we think of fine fescue, some creeping bentgrass and tall fescue. Kentucky Bluegrass is considered very poor for shade. Because ProVista is a slower growing grass, its shade tolerance is greater; it needs less light when compared to other cultivars of KBG.

Application of N enhances turf grass color. The primary pathway of N

removal results from mowing.

It only makes sense if you are mowing half as much, you are moving half as much N. Conventional Bluegrass uses approximately 4#N/1000 sqft/Y. ProVista achieves positive results 2#N/1000 sqft/Y.

Weed Control: Use glyphosate to start clean and stay clean. Greenhouse research data in Marysville, OH tested glyphosate rates of 0, 32, 64oz/A (0.75, 1.50lbs ae/A). Recommended glyphosate is 32oz/A. Research conclusion ProVista had a tolerance to glyphosate at 2X rate which provided overlap protection.

In field research data in Marysville, OH, glyphosate applied at 0, 32, 64, 128, 192, and 256oz/A. The research conclusion was the tolerance to glyphosate at 8X rate. Applications should occur when turf is healthy and actively growing.

Dr. Baldwin discussed the use of Glyphosate and the best practices that help to reduce the chance of Glyphosate toler-

ance by implementing the following BMPs:

- By optimizing the environment to maximum the health and quality of Scott's ProVista turfgrass, the reliance on glyphosate applications for weed control may be reduced.
- Utilize pre-emergent herbicides for weed prevention to minimize the need for broadcast glyphosate applications.
- Do not rely solely on glyphosate for weed control.
- Rotate herbicides mode of action throughout the growing season for weed control.
- When spraying glyphosate, tank mix other post/pre-emergent herbicides with efficiency towards the target weed to ensure multiple modes of action are applied.

Chicago area golf courses that have done some of the real world testing are as follows:

- Bryn Mawr Country Club
- Biltmore Country Club
- Cantigny Golf Club
- Mistwood Golf Club (Site of our September meeting)

So far it looks like Scott's ProVista could have a lot of uses around the golf course. Only time will tell. @

When it comes to Turf Nutrition Technology, there are Leaders and there are Followers.

Biostimulants - 1991

Humic Acid - 1992

Amino Acids - 2000

Anti-Oxidants - 2001

Plant Defense - 2002

Crenic Sapins - 2005

Root Exudates - 2007

Glycomics - 2014

Go with the Leader.



616.805.4718 / www.greatlaketurf.com

Helping you fit the pieces together.

PHYSICAL
CULTURAL
NUTRITION
CONSTRUCTION

Dirt~n~Turf
Consulting, Inc.

David Marquardt ~ Consulting Agronomist
630-251-1511 dave@dirty-n-turf.com

• THE PROS OF BEING A PRO •

EXPERT ADVICE

At SiteOne® Landscape Supply, our industry pros deliver ideas and answers to help you take your course to the next level. When you package that with a large inventory of leading brands, time-saving delivery service and flexible financing options, it's easy to see why SiteOne is the top choice for green industry pros.



Visit your nearest SiteOne Landscape Supply location.

Charles Hill | Chill@siteone.com | 630.768.9275 | Key Account Manager

Paul Yerkes | Pyerkes@siteone.com | 630.514.9373 | Business Development Manager

