

Midwest Breezes



Shoreacres' Bunker Work

This fall the grounds staff at Shoreacres restored the greenside bunker on the left side of the Redan hole, #14. A comparison of the most recent aerial photo of the course with the 1937 aerial photo reveals that the original bunker had become two bunkers. Tim restored the hazard to one continuous bunker.

To put the perimeter and embankments of the bunkers at Shoreacres back to their original shape, Tim's men stripped the sod and carefully removed the layers of sand which had accumulated on the banks from wind and golf shots. All this work was done with hand shovels.

The old sand was removed and the floor of the bunkers was cut to a depth of eight inches below the grass line to hold eight inches of Thelens #1 Mason sand.

An eight-inch deep and ten-inch wide drainage trench was cut for four-inch rigid, plastic tile to be laid on a one-inch bed of number nine stone. Additional number nine stone was added to nearly cover the four-inch pipe. The final three inches of the drainage trench was back-filled with pea gravel.

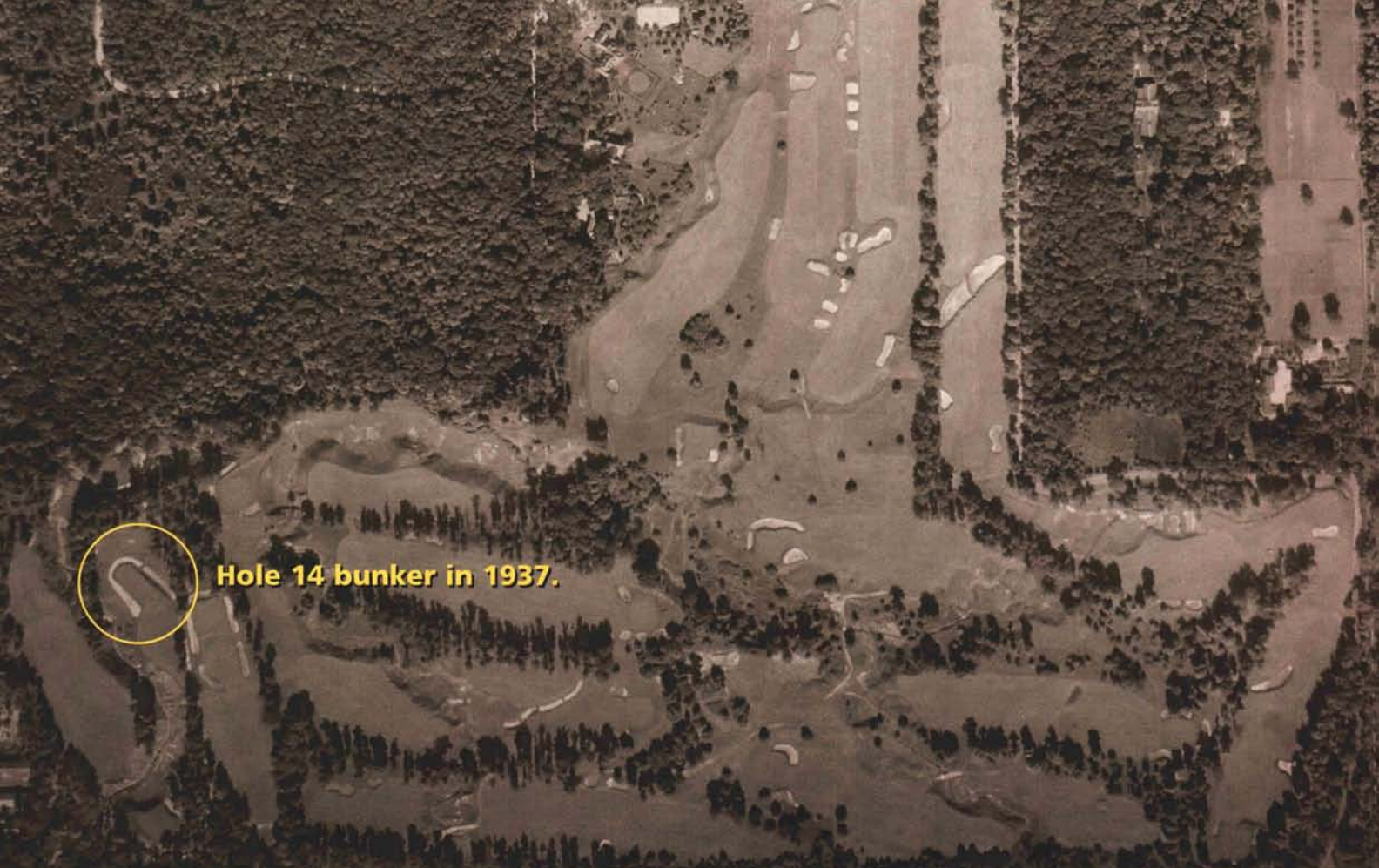
Before the sand was brought to the bunker, the slopes were sodded. The sod was held on the steep slopes with biodegradable sod staples.

The sand was placed in the bunker in two four-inch lifts. Each lift was plate compacted.

Brad Anderson, CGCS



Redan Hole, #14 completed and viewed from the opposite side of the ravine.



Hole 14 bunker in 1937.



Hole 14 bunker in 2006.

The handwork of the crew at Shoreacres.

Above: Men check the pitch of the solid 4" drain tile installed in the hand dug trenches.

Middle: One of the lateral drain lines in the trench prior to pea gravel backfill.

Below: This image shows two important features of this project. The first is the immense size of the bunker and the second is the severity of the slope on the greenside edge.

