

MIDWEST BREEZES

Brad Anderson, CGCS, Associate Editor



Peter Hahn, Ridgemoor Country Club

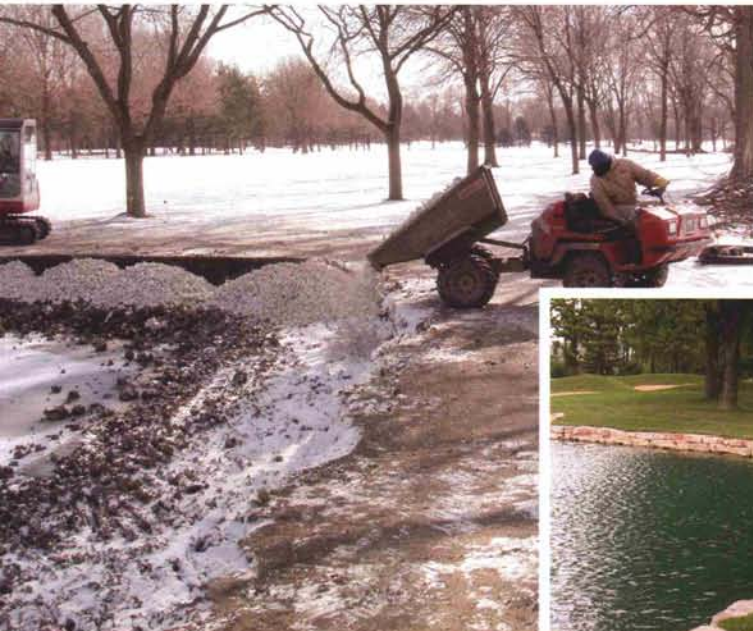
One of the most difficult areas that we manage on our golf courses is the shoreline of ponds and streams. There is a natural hostility between land and water, and bringing the two entities into harmony can present a tremendous challenge.

But at Ridgemoor Country Club, Peter Hahn and Mike Hollembeak of Hollembeak Construction, have together developed a very attractive, and lasting solution to shoreline stabilization.

When the ground is frozen the pond is drained below normal water level to accommodate the cutting of a shelf for

spreading a ten-inch footing. Eden's Outcropping Stone is dry stacked on the footing. A layer of fabric and crushed stone are laid behind the outcropping stone. The backside of the top layer is left void for topsoil backfill and bluegrass sod.

The finished look of the shoreline is extraordinary. And the quality of the water is dramatically improved from the elimination of wave action scrubbing against exposed shoreline soil. The perimeter of the pond may be maintained with a triplex with no extraneous trim work required. **-OC**



Landscape fabric is covered by crushed stone on the bank of the drained pond.



Outcropping stone is dry stacked along the pond bank.



After backfill and sod the new pond banks are very impressive and highly functional.