

Midwest Breezes



Naperville Country Club

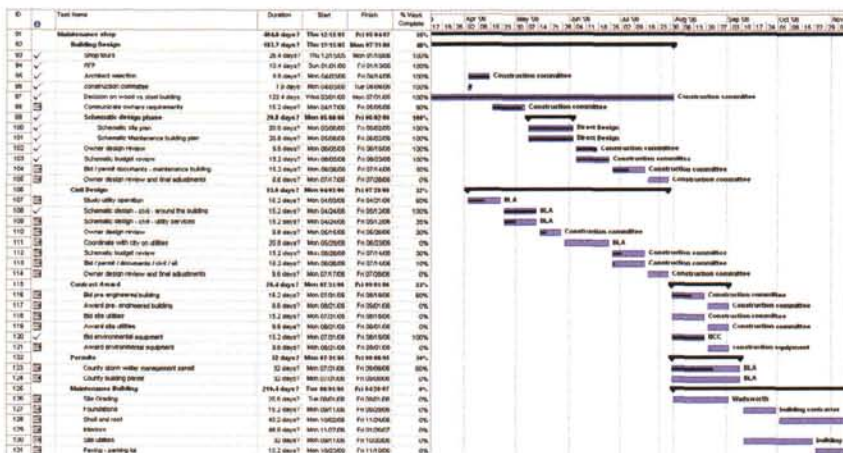
On July 10, the golf course at Naperville Country Club was closed for remodeling. Several holes are being completely re-routed, along with significant changes to virtually every hole on the golf course. Tim Anderson, CGCS is also overseeing construction of a new maintenance shop, pump station and halfway house. Furthermore a new irrigation system is being installed, new ponds are

separate project categories each with their own time line. Each project has sub-items with start dates, deadlines, and milestones plus the names of all involved parties, and their various responsibilities. Each task can be tracked by date, by responsible party, by cost and other factors to help Tim manage the project as a whole.

All of this information is printed out onto 28 standard sized papers, and taped together into a document called a Gant chart. The chart allows Tim and the committees of the club to visually track where they are in their progress. There are check-offs for each phase of every project, and the Gant chart illustrates the progress of each line item with a bar graph, showing where the progress should be on each day, against actual progress.

Tim feels that the Gant chart has helped everyone to take ownership of their individual tasks and roles. And most importantly, it has helped to keep things on schedule.

Brad Anderson, CGCS



Microsoft (MS) Project as it appears on the computer.

being dug, a deep well is being drilled and lastly the club-house parking lot will be remodeled. All of this work is happening in a short period of time, with Tim orchestrating the activities of dozens and dozens of suppliers, contractors, governing agencies, and committee people.

With a project of this scope and magnitude, Tim was looking for a tool to help him keep everything organized. At Luke Cella's recommendation Tim purchased the computer program Microsoft (MS) Project. MS Project is a program designed specifically for managing projects, resources and schedules in one easy to use format. The use of MS Project has enabled Tim to put every detail of each project into one interrelated document.

Through the simple use of timelines, MS Project keeps track of schedules, resources, budgets, estimates, task assignments, and shows how delays of small tasks affect the project as a whole. Tim custom designed eleven



The Project printed out onto 28 standard sized papers, and taped together into a document called a Gant chart.