

# Greg Thalmann, CGCS -N-



Greg and Ami.



*Greg Thalmann, CGCS, is the superintendent at Fox Run Golf Links in Elk Grove Village, IL. The Elk Grove Village Park District owns and operates the course. Fox Run Golf Links is the host site for this month's MAGCS meeting.*



No. 10 green.

Photos by Jim Trzinski.

More than 20 years ago, the combined efforts of Centex Homes, Elk Grove Village and the local park district resulted in Centex donating the land to the park district for development of an 18-hole golf course. In the spring of 1982, a design was agreed upon and construction began at Fox Run under the direction of the late Ed Braunsky, Sr. However, the tardiness of the general contractor and subcontractors led the park district to terminate their contracts. The passing of Mr. Braunsky was another huge blow to the project. With big shoes to fill, the park district decided to bring in an employee of its parks department: Greg Thalmann.

Greg Thalmann, CGCS, has been the superintendent at Fox Run since 1983. During Greg's tenure, many improvements and projects have been undertaken. The installation of a continuous cart path throughout the course wrapped up in fall 1992. Additions to the clubhouse included a restaurant, indoor cart storage and new office space. Furthermore, a complete upgrade to the irrigation system included the installation of a double-row setup and addition of rough irrigation. Because the course is built on a flood plain, soil erosion on creek banks at Fox Run is commonplace. On an ongoing basis, the maintenance staff has been installing a rock-bank buffer between the soil edge and Salt Creek, which runs through the property. Moreover, on many of the tee banks and waterways rectangular-shaped wire cages previously filled with rock were shaped properly to make a solid wall to prevent erosion.

Seeing that the maintenance at Fox Run was well in hand with Greg at the helm, the park district charged him with running the entire outfit in 1998. Because filling the dual roles of general manager and superintendent entails many responsibilities, Greg relies even more on his staff of seasoned veterans. According to Greg, his life is a lot easier thanks to his assistant of 20 years, Pascual Perez. Along with Pascual, many of Greg's 15 seasonal staff have been at Fox Run for at least 10 years.

In his time as a superintendent, Greg has dedicated plenty of his time and talents to MAGCS. He was a member of the Board of Directors from 1996 – 2001. During his tenure, he was heavily involved with the Membership, Arrangements, Long-Range Planning, Public Relations and Scholarship committees. His leadership of the Scholarship Committee spearheaded the efforts of the MAGCS to organize the scholarships that are given out today.

*(continued on page 8)*

For Greg, the best benefit of belonging to MAGCS is simple: "The camaraderie amongst the members is the best thing.

"I would feel at ease calling and asking any member of MAGCS questions."

We all well know that behind a great super is a wonderful supporting cast. Greg's leading lady is his wife of 31 years, Trudi, who works as a dental hygienist. Greg and Trudi have three children: Sarah, Nathan and Abby. Sarah, 26, is a graduate of St. Louis University and an assistant manager of a hotel in St. Louis. She was married on June 18 of this year. Nathan, 24, will be finishing up his degree in criminal justice from Northern Illinois University this August. Abby, 22, is also a grad of St.

Louis University with a degree in nursing. She is an RN at Children's Memorial Hospital in Chicago.

When an average golfer comes to play Fox Run, they do not know how a 3" rain affects the course. They care that the course plays to 6,700 yards from the tips and whether or not cart restrictions are in place. However, when the members of the MAGCS come for the monthly golf meeting this July, we will have the inside edge as far as the course and who runs it. We know the behind-the-scenes leader of Fox Run a little better. His name is Greg Thalmann, CGCS.



## **MORE ABOUT GREG THALMANN, CGCS**

### YEARS AT FOX RUN

**21**

### MAGCS MEMBER SINCE

**1982**

### GCSAA MEMBER SINCE

**1984**

### YEAR CERTIFIED

**1990**

### EDUCATION

**Western Illinois University,  
Fine Arts**

### PREVIOUS JOB(S)

**Assistant superintendent at  
Mt. Prospect G.C. and  
Green Acres C.C.**

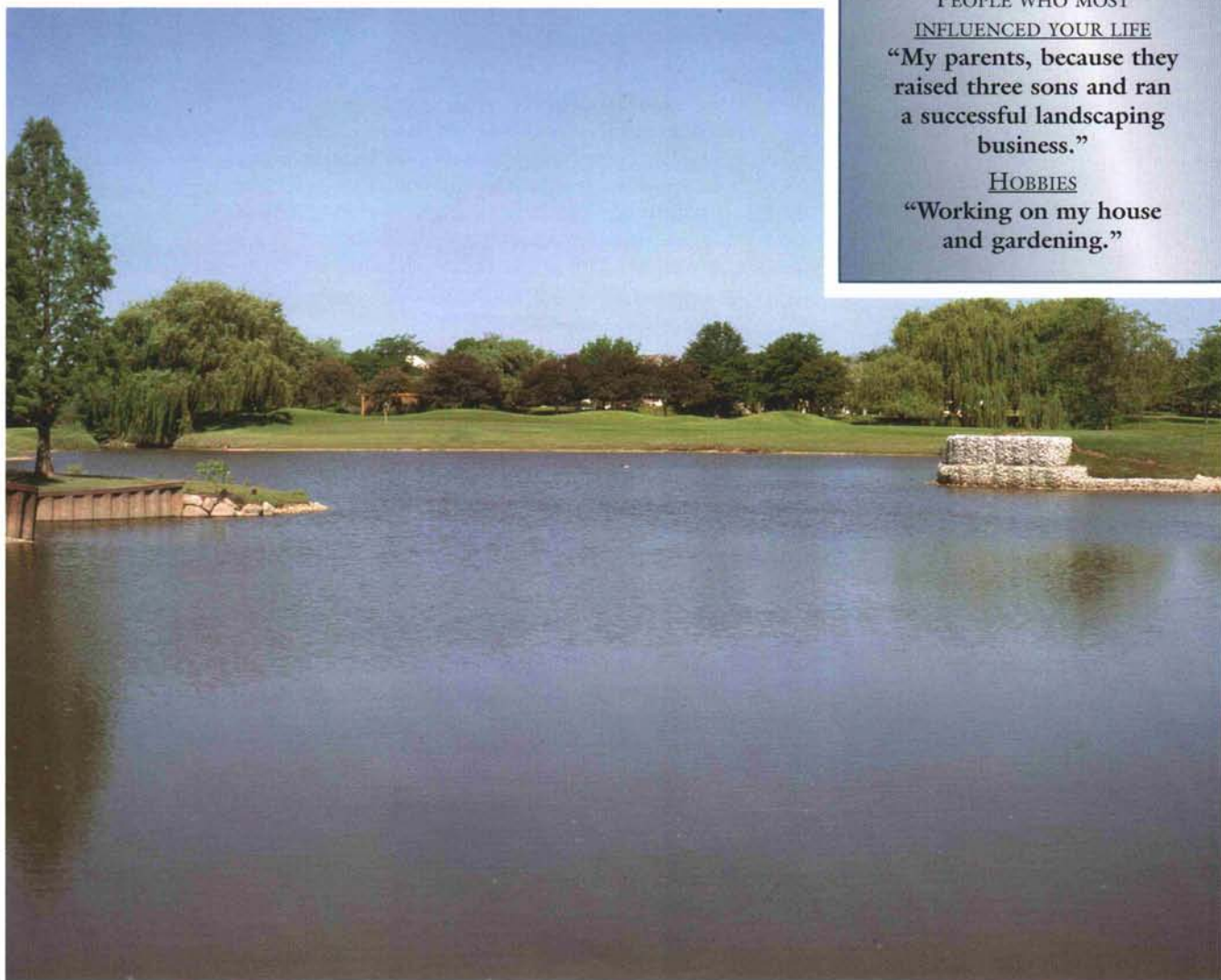
### PEOPLE WHO MOST

### INFLUENCED YOUR LIFE

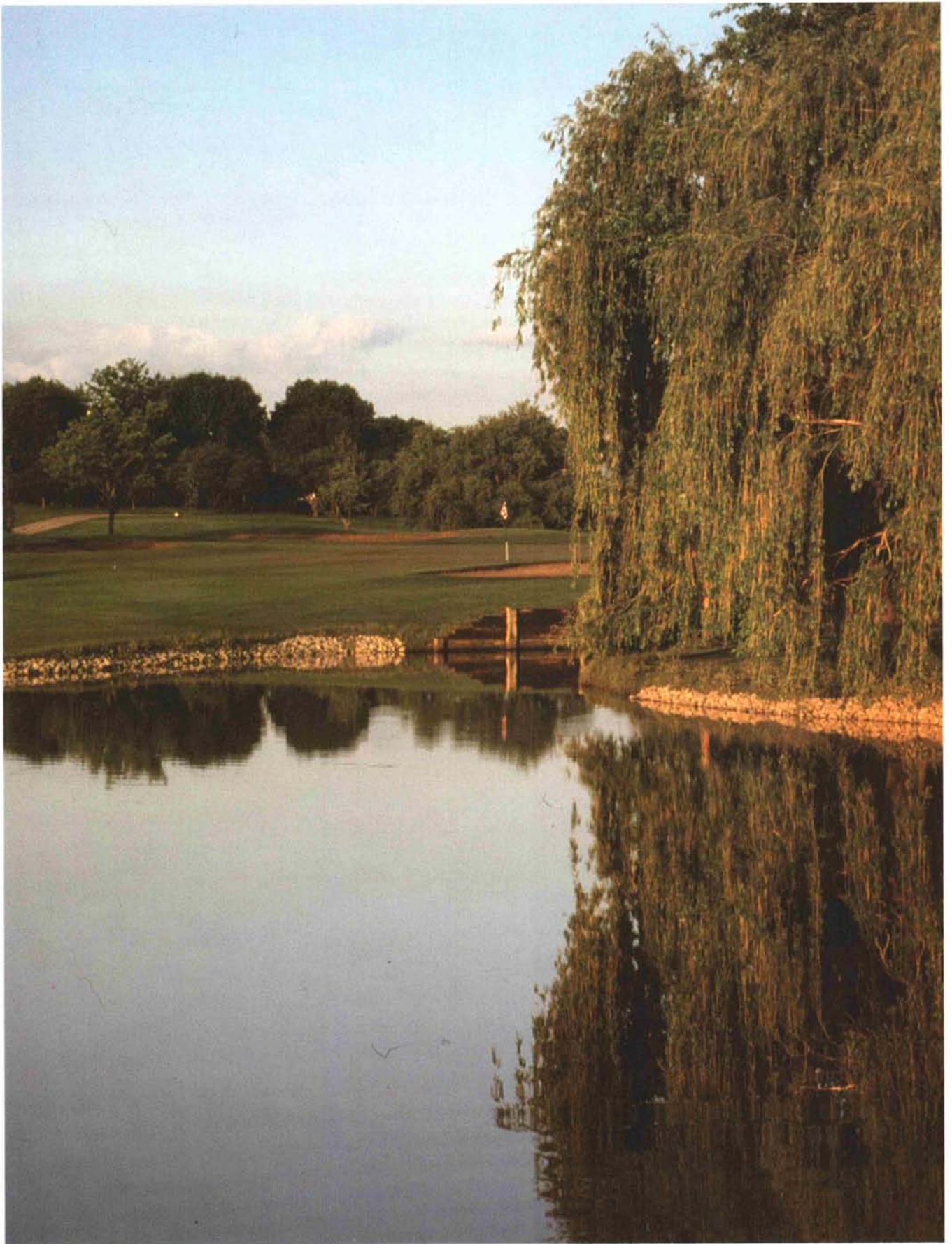
**"My parents, because they  
raised three sons and ran  
a successful landscaping  
business."**

### HOBBIES

**"Working on my house  
and gardening."**



*No. 6 green in the distance with no. 15 tee on the right.*



*No. 17 green.*