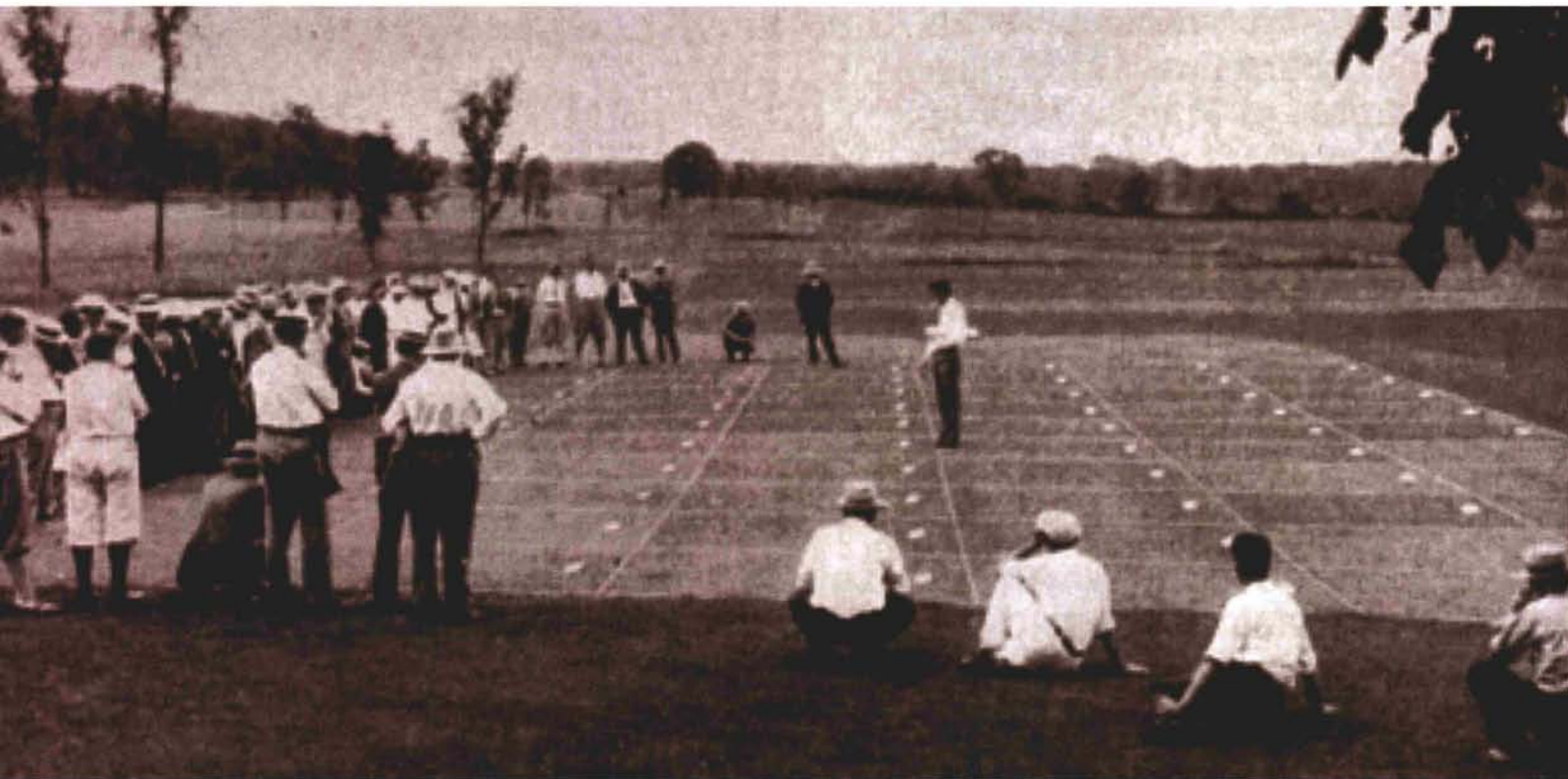


# Plotting Our Progress



*If you think experimental turfgrass plots are a more or less recent development on the research scene (e.g., the Cantigny plots overseen by Dr. Randy Kane of the CDGA), think again. Superintendents have been using such plots, albeit informally, for time immemorial, and formal, rigorous use of turfgrass plots in the Chicago area dates back to the early days of the 20th century.*

This photograph depicts turfgrass plots on the A.D. Lasker estate in Lake Forest, circa the 1920s. Lasker, an advertising magnate, had a private golf course built on his property due south of the present site of Conway Farms. Known as the Golf Course at Mill Road Farm, the tract (until it was closed in 1942) was regarded as

Chicagoland's most difficult, surpassing even Medinah No. 3 and Olympia Fields' North Course. MAGCS past president Cyril Tregillus, hired as greenkeeper at Mill Road Farm in 1928, ran the experimental laboratory in conjunction with the USGA Green Section. One of Tregillus' first projects was regrassing the greens,

as the course's creators had used a strain of bentgrass not suited to our climate.

The lab ceased operations in 1940, but its impact was long-lasting. Research there fueled the ascension of grass greens nationwide, and the rest, as they say, is history. 