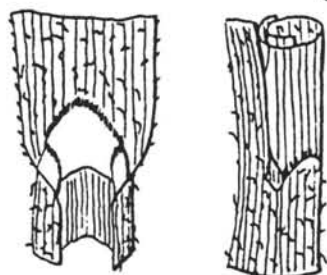


# Vegetative Features of 5 Native Prairie Species

Compiled by Tom Voigt  
University of Illinois

## Big Bluestem (*Andropogon gerardii*)



Growth Habit: tall (can reach more than 8'), upright, warm season perennial with short, thick scaly rhizomes

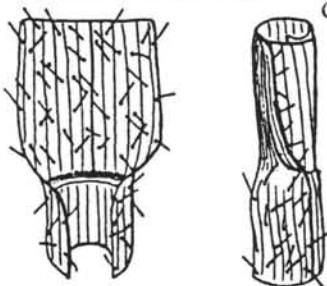
Blade: to 1/2" wide, up to 20" long, flat or V-shaped constricted at base, long pointed tip, extending partway down the sheath, slightly rough or smooth above, smooth below, with silky hairs at base, light green and often redtinged, especially near the tip; veins distinct, midvein prominent; margins rough; rolled at emergence

Sheath: compressed, split, usually purplish at base and below ground, softly hairy or sometimes smooth; veins distinct, margins thin

Ligule: to 1/8" long, membranous, obtuse, margin looks hairy or torn

Collar: medium broad, often indistinct, light or yellowish green, sometimes divided by midvein, hairy on margins

## Side Oats Grama (*Bouteloua curtipendula*)



Growth Habit: short (usually less than 3"), upright, warm season perennial, with short, scaly rhizomes; leaves mostly from base

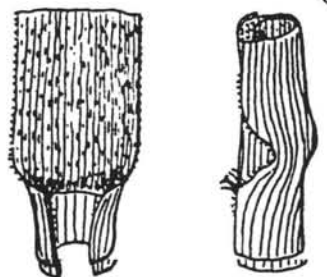
Blade: to 1/4" wide, up to 12" long, flat or rolled, acuminate, rough above, smooth below, with few long hairs scattered on both surfaces; veins distinct; margins rough to hairy

Sheath: round, split, usually pubescent, often purplish at the base; veins prominent; margins translucent

Ligule: to 1/25" long, membranous appearing hairy at margin

Collar: medium broad, yellowish green or brown, continuous, with few hairs

## Blue grama (*Bouteloua gracilis*)



Growth Habit: short (up to 30"), dense, tufted, warm season perennial with fibrous roots; occasionally with very short scaly rhizomes, leaves mostly basal

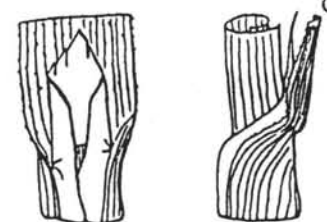
Blade: flat or loosely rolled (up to 10" long, 1/5" wide), tapering, hairy to rough above, smooth to slightly rough below, sometimes sparingly hairy on both surfaces

Sheath: round, smooth to hairy, long hairs at collar

Ligule: membrane with hairy margin (up to 1/50" long)

Collar: continuous, medium-broad, distinctly yellowish-green, with long hairs on inside of margins

## Bluejoint (*Calamagrostis canadensis*)



Growth Habit: tall (to 5'), erect, tufted, cool season perennial with rhizomes

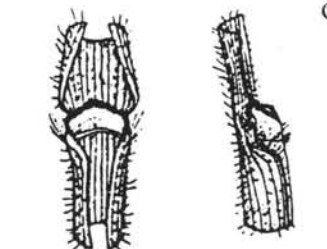
Blade: to 1/2" wide, to 18" long, flat, lax, medium green, long, pointed tip; ridged and rough above, midrib prominent, smooth or slightly rough below; margins rough

Sheath: round, split with rough margins, distinctly veined, smooth, yellowish at the base

Ligule: to 1/5" long, membranous, truncate, often irregular or split

Collar: indistinct, continuous or divided, glabrous, yellowish green, often oblique

## Junegrass (*Koeleria cristata*)



Growth Habit: low (to 2.5'), erect, tufted, cool season perennial, with fibrous roots; usually short lived

Blade: to 1/6" wide, to 6" long, tapering to an obtuse tip, flat to rolled, bluish green, stiff, ridged and rough above, keeled and usually smooth underneath; margins rough scabrous

Sheath: round, split, rough and often hairy, distinctly veined, pale green; margins rough

Ligule: to 1/25" long, membranous, truncate to obtuse, often split, usually hairy

Collar: medium broad, continuous or divided, yellowish green, smooth or hairy on margins