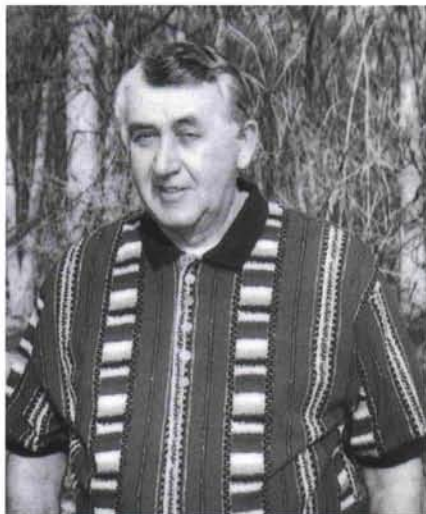


Ray Schei -N- Odyssey Golf Club



Ray Schmitz

It gives me great pleasure to introduce Ray Schei who will be the host superintendent for the June meeting of the MAGCS at the Odyssey Golf Club.

Ray has been married to Betty for 40 years and has two grown children and two wonderful grandchildren. Ray has lived in Downers Grove for the past 20 years. He enjoys traveling with his wife and, while at home, spoiling his grandchildren.

Ray's first job was at Midwest Golf Club where he worked as assistant to Marv Gruening. He then moved to Acacia Golf Club as golf course superintendent where he remained until the property was sold to be subdivided for home-sites. As the years evolved, Ray served as superintendent at Plum Tree National, Ruth Lake, and White Eagle before accepting the challenge as superintendent at Odyssey in 1990. Ray is a 30-year member of both the MAGCS and GCSAA.



Island green, #16 hole, Odyssey Club.

Odyssey Golf Club opened for play August of 1991. The golf course architect was Harry Bauers, and the design consultant was Curtis Strange. The course started as a links-style layout; but since opening day, Ray has plant-

(continued on page 31)

Supplying the Chicagoland area with excellent service and technical expertise for over 26 years...



We deliver...

- Aquatic Products
- Block Retaining Wall
- Bulk Fertilizer
- Drain Tile
- Fertilizers
- Geotextile Fabrics
- Grass Seed
- Herbicides
- Hose
- Insecticides
- Irrigation Parts
- Marking Paint
- Specialized Pesticides
- Spreaders
- Spray Equipment
- Tee and Green Equipment
- Terra Shield Green Cover
- Tree Fertilizer

2N 255 County Farm Road, West Chicago, IL 60185

708-668-5537

Ray Schei -N- Odyssey Golf Club
(continued from page 8)

ed 3,500 trees to better define the holes and to add to the difficulty of the golf course. The golf course is situated on 279 acres which includes more than forty acres of lakes and ponds.

The biggest challenges at Odyssey for Ray and his assistant, Nick McGraw, are maintenance of a high-quality golf course and mowing of grass on the unsold lots and condos. Also on the list of responsibilities are lawn mowing and landscaping at an adjacent property called Fun World Amusement Park.

Last year, Odyssey hosted the U.S. Handicap Golf Tournament. This year, along with numerous corporate outings, Odyssey will be the site for the Illinois Womens Open Golf Tournament.

Ray takes much pride in his work at Odyssey and is proud to show off his accomplishments. Considering all the wet lands and the water on the property, Ray has decided to join the Audubon Cooperative Sanctuary Program for golf courses. The potential for an Audubon program on this property is indeed great.

Interviewing Ray was a pleasure for me because I consider Ray Schei to be a good friend. Odyssey Golf Club is one of my favorite places to play golf in the Chicago area. At the June meeting, play the course. I'm sure you will agree! ■



TURFTALK
708/898-6168

Hollembek Construction, Inc.

Golf Course Construction and Remodeling

"We believe in a quality job and take pride in our finished product."

- New Construction
- Feature Shaping
- Bunker Sand Replacement
- Pond Dredging
- Pond Construction
- Boulder Features
- Cart Paths
- Drainage

Mike Hollembek

P.O. Box 103
Big Rock, Illinois 60511
Phone (708) 556-3891

Jeff Hollembek