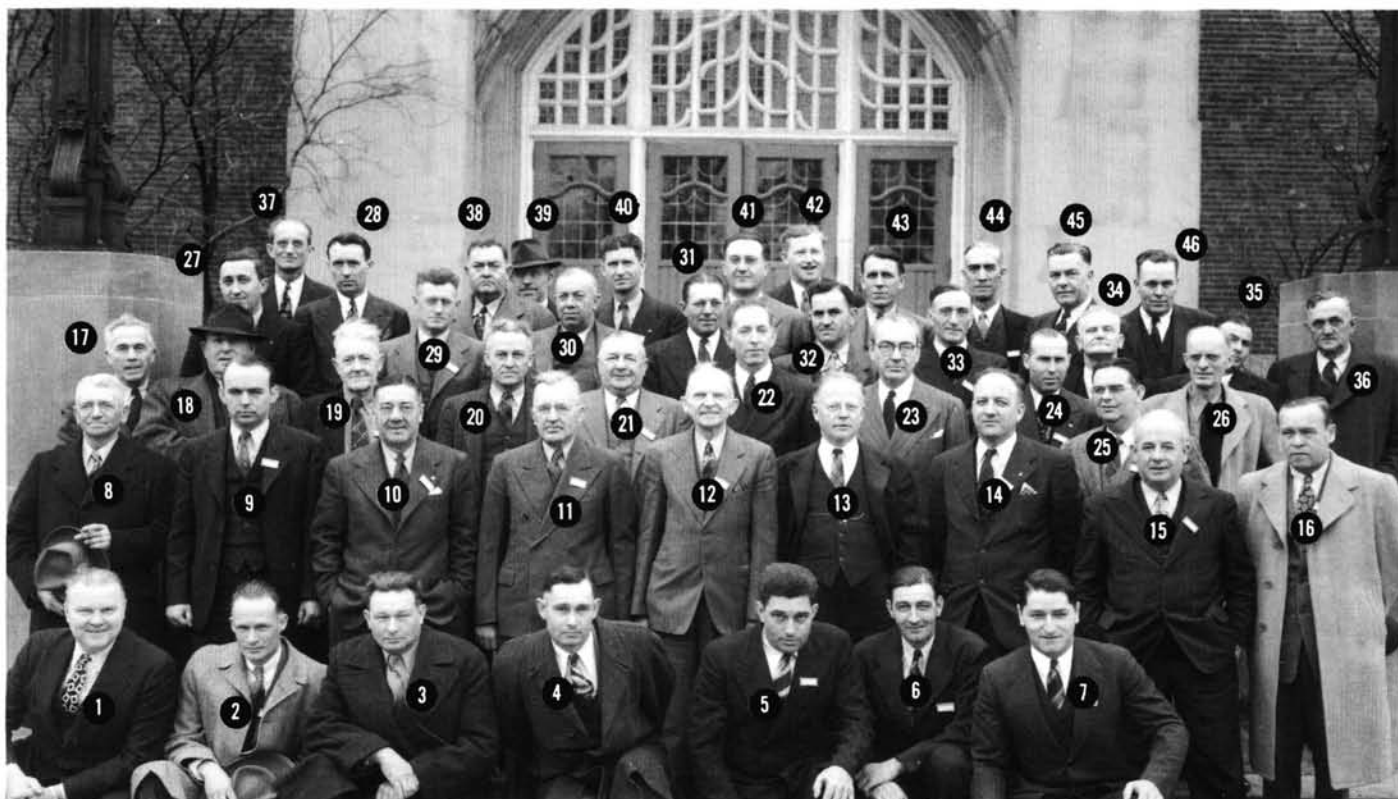


Do You Remember ... Some Guys Still Do! "1944 Midwest Conference at Purdue University"



In the January issue we had a picture of the 1944 Midwest Conference at Purdue University and I asked for names of the people in the picture. Our good friend, Dr. Bill Daniels responded from sunny Arizona with his list of names and I got a few more from other people. Here is what we have to date: #2 Bud Esterdine, Muncie, IN; #5 Gabe Rosset, Skokie C.C.; #6 Don Strand, Westmoreland G.C.; #7 Frank Dinelli, Northmoor C.C.; #9 G. D. Mott, Purdue University; #13 O. J. Noer, #16 Gerald Dearie Sr., Evanston G.C.; #17 Mert Clivett, Purdue; #23 Herb Graffis, Golfdom; #24 Pete Coval, Indianapolis; #25 John Darrah, Olympia Fields G.C.; #27 Amos Lapp, St. Andrews G.C.; #28 Ray Gerber, Glen Oak C.C.; #31 Carl Britzloff, Meridian Hills C.C.; #32 Ray Dieder; #35 Wayne Bennett, Kokomo; #37 Al Brandon; #40 Ward Cronwell; #41 Hermann Woehrle, Kankakee C.C.; #42 Bill Stupple, Exmoor C.C.; and #45 George Enfield, Agronomy at Purdue.

1994 MAGCS Hospitality Room Dallas, Texas

by A. T. Flierst

The Board of Directors and the entire membership of the Midwest Association of Golf Course Superintendents gratefully acknowledges the generous support of the MAGCS hospitality room sponsors. The sophistication and scope of the "Midwest Hospitality Room" at the convention headquarters hotel in Dallas was without parallel and reflected the very generous way in which these sponsors responded. The collective support and contributions of the sponsoring individuals, companies, and corporations provided the substantial resources necessary to fund so fine an effort. Not only do these people deserve the gratitude of the MAGCS membership; they deserve your expressions of individual gratitude and patronage as well. Without the allied participation of these generous sponsors, the Midwest would be hard pressed to provide the fine environment for social and professional activities at the yearly GCSAA conference.

The Board of Directors and the entire membership of the Midwest Association of Golf Course Superintendents wish to thank the following for their generous participation:

Arthur Clesen Inc.	Nor-Am Chemical
Illinois Lawn Equipment	J.W. Turf
Ciba-Geigy	Layne Western
Roseman Tractor	Bojo Turf
Hollebeak Excavating	Lewis Equipment
Duntelman Turf Farms	Jim Burdett
Cannon Turf Supply	Williamson Nursery
The Andersons	LESCO
Lohmann Golf Design	Midwest Golf Development
Century Rain Aide	Martin Design
Christensen Power Equipment	Turf Products Ltd.
Chicago Turf and Irrigation	Halloran and Yauch
Huber Ranch Sod Nursery	Timberline Construction
Johnson & Assoc. of Lombard	Lemont Paving Company

And let us not forget to acknowledge the Hospitality Room Committee, and the MAGCS Board of Directors for their help in handling some of the many details that are a part of such a complex function. And, of course, many thanks to Janet S. Good for her fine effort in organizing and coordinating the room, the food, the beverage, and the service at the Loews Anatole. An absolutely marvelous effort!