

# 1993 MAGCS Golf Committee Monthly Meeting Schedule Duties

The following is a list of meetings for 1993 and the duties of each committee member for each meeting.

The duties are as follows:

## PRE-EVENT CHAIRMAN

Coordinate all pre-event plans. Arrange for merchandise prize amounts, what types of prizes, and where purchased. Plan on being at the meeting site 1 1/2-2 hours before tee time. Since this year you must pre-register, you will have a copy of the tee assignments. Make sure all handicaps are recorded. Deal with cancellations. Sign-up people who show up the day of the event. Those people are not eligible for prizes that day. Give the final players list to pro if necessary.

## BETTING HOLE PERSON

Setup betting hole for the meeting. Make sure someone is assigned to work the hole. Be sure all proper items are in order.

## POST-EVENT CO-CHAIRMAN

Two people will act as Post-Event people. These people will be responsible for any scoring that needs to be done after the event to decide the prize winners. Assist with the distribution and record keeping of prizes at the conclusion of the event.

## JULY 19 — Poplar Creek Country Club

Event is the senior championship. Other players will play an individual score event. Gross and net prizes for both divisions. Figure net score by subtracting the players individual handicap from their score.

- Post-Event Chairman — Don Ferrari
- Betting Hole Person — Phil Taylor
- Post-Event Person — Ed Braunsky
- Post-Event Person — Albie Staudt

## AUGUST 9 — Lake Wood Golf Club

Event is a 4 man team total. Gross and net prizes. Net score will be determined by adding the 4 players handicap and taking 80% of the total. This number will be subtracted from the 4 man total for a team net score.

- Pre-Event Chairman — Phil Taylor
- Betting Hole Person — Ed Braunsky
- Post-Event Person — Kerry Blatteau
- Post-Event Person — Dave Louttit

## SEPTEMBER 21 — Shoreacre Golf Club

Event is the annual M.A.G.C.S. championship. All players must pre-register for the event and will be flighted and paired according to handicaps. Failure to pre-register will result in not being able to participate in the event. All prizes will be low gross only within your flight.

- Pre-Event Chairman — Ed Braunsky
- Betting Hole Person — Rob Zimmerman
- Post-Event Person — Brian Bossert
- Post-Event Person — Kerry Blatteau

(continued on page 10)

## PAARLBERG CHEMICALS

featuring

- Par-Ex Fertilizer
- Lebanon Fertilizer
- Du Pont Chemicals
- Chipco Chemicals
- Daconil - Dacthal
- Bean Sprayers
- Elanco
- PBI Gordon
- All Major Turf Supplies



Quality



Value



Service

1840 E. 172nd St., So. Holland  
708-474-3086 815-469-6730

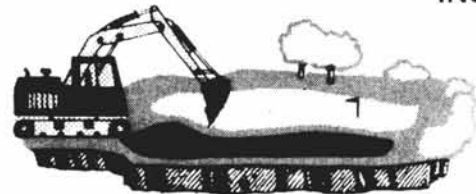
## PERSONALIZED AND PROFESSIONAL LAWN AND TREE CARE SERVICES.

For tree care, hydroseeding, prairie installation or lawn care go with the professionals. McGinty Bros. Inc.! We're small enough to provide that personalized service and large enough to offer all the professional systems knowledgeable clients insist upon.

**McGinty**  
BROS., INC.

3524 Long Grove Road  
Long Grove, Illinois 60047  
TEL: (708) 438-5161  
FAX: (708) 438-1883

## HOLLEMBEAK EXCAVATING & GOLF COURSE CONSTRUCTION INC.



MIKE HOLLEMBEAK  
708-556-3891

BOX 103 GRANART RD.  
BIG ROCK, IL 60511

**the  
bruce  
company**

(608) 836-7041  
Fax: (608) 831-4236

OF WISCONSIN, INC.

**LEE BRUCE**  
GOLF COURSE CONSTRUCTION

2830 W. BELTLINE HWY. • P.O. BOX 330  
MIDDLETON, WI 53562

(Meeting Dates continued)

**OCTOBER 4 — Bartlett Hill Golf Club**

Event is the annual M.A.G.C.S. College championship. Format will be a 2 man scramble and a college must have at least 2 two-man team scores to qualify for the championship. The college championship winner is gross scores only. You must play with only your partner from your college. May play with another team from another college. The winner will be the college with the lowest two team gross total. Prizes will be awarded in both gross and net. The team net score will be determined by adding the two handicaps together, dividing by two and taking 80%. This number will be subtracted from the team score. There will be a non-college open division as well.

- Pre-Event Chairman — Mark Johnson
- Betting Hole Person — Albie Staudt
- Post-Event Person — Doug Long
- Post-Event Person — Rob Zimmerman

**Please Support  
Our Advertisers**

**Midwest Association of Golf Course  
Superintendents Monthly Meeting  
Seniors Day — Monday, July 19th, 1993  
Poplar Creek Country Club — Host: Luke Strojny**

Tee times available from 10:00-1:30  
Cocktails 5:30     Dinner & Meeting 6:30 — Casual attire

Pre-registration and pre-payment is required. Call Poplar Creek Pro Shop at 708/884-0219 to make your tee time, then mail in your payment to MAGCS. If the MAGCS does not receive your payment by July 15th, you will be charged a late fee of an additional \$10.00 and you will not be eligible for prizes. MAGCS member cost for the day - \$50.00; Non-member cost for the day - \$70.00; Cost for dinner only - \$25.00; Cost for dinner only at door - \$30.00

**July 19th, 1993     Poplar Creek**

Name \_\_\_\_\_

Telephone \_\_\_\_\_

Club/Company \_\_\_\_\_

Full Days events \_\_\_\_\_

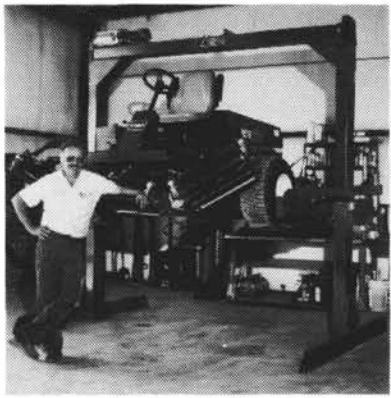
Dinner \_\_\_\_\_

Tee time made with Poplar Creek \_\_\_\_\_

Handicap \_\_\_\_\_

Make checks payable to MAGCS, P. O. Box 248, Eola, IL 60519. Payment due no later than July 15th, 1993.

**"I never want to work without a TRION™ LIFT again!"**



"Before, it was almost impossible to see what I was doing, let alone repair it. Now everything is right where I can see it . . . sitting down!"

"I can save an hour or more a day on maintenance time."

Ed Ward  
Head Mechanic, Highland Hills Municipal G.C.

**THE ONLY LIFT SPECIFICALLY DESIGNED FOR GOLF COURSE EQUIPMENT**

■ Several models available to lift all 3- and 4-wheel golf equipment up to 2,600 lbs.

**PRICED FROM**  
\$3900 to \$4750  
plus freight

**(815) 469-8500**  
**(708) 301-8500**



**Special Low Pricing on  
Vicon Seeder Spreaders!**



**25% OFF ALL MODELS IN STOCK**  
The accurate, versatile, reliable spreaders available in sizes from 400 - 3,600 lbs.

**HUBER RANCH POWER EQUIP., INC.**  
Box 188, Schneider, IN 46376  
**1-800-553-0552 or (219)552-0552**