

satisfactory control. These materials have been especially helpful to sod growers needing to get a spring seeded, weed infested crop to market in the fall.

Bentazoun (Basagran) is labelled for postemergent control of yellow nutsedge in many different turfgrasses. As always, directions given on the label for herbicide use should be followed closely.

Non-selective, short residue herbicides have had rather limited use in the turf industry until fairly recently. Paraquat, a contact herbicide, provides kill of emerged annual broadleaf weeds and grasses and for top kill and suppression of perennials. Paraquat ties up rapidly in clay soils. Paraquat is a **RESTRICTED USE PESTICIDE**.

Glyphosate (Roundup, Kleenup) translocates to kill both roots and shoots. It is used in many ways on turf facilities. It has been used to chemically edge around headstones, near fences and roadways, etc. It has been used to take out undesirable plant materials, including old stands of turf, to allow for establishment of desirable turfgrasses. Work is currently underway to make commercially available mixtures of glyphosate with chemicals that will provide preemergent weed control. This or proper tank mixes could significantly extend the length of time between applications of glyphosates. Glyphosate ties up in soils, and few problems have been noted from movement from application site. However, "extreme care must be exercised to avoid contact of spray, drift or mist with green foliage, green bark or bark of trees established less than two years. Suckers or fruit of desirable trees, crops, plants or other desirable vegetation. Spray contact with other than matured bark on the main trunk can result in serious localized or translocated damage."

Other nonselective, short residue herbicides such as dalapon and cacodylic acid are used in turf situations.

Nonselective, long residue (soil sterilants) herbicides have been used in some turfgrass situations. These materials should be used, as every pesticide should, **strictly** as directed on the label. In urban situations the materials have caused some very serious problems when used by homeowners, and even by "professional" applicators. There seems to be a trend to use short residue, broad spectrum controls, in lieu of sterilants, in urban situations.

From the above it is quite evident that many factors enter into devising a successful turf weed control program. And, it is the role of the professional groundskeeper to understand and manipulate these many factors to get the best results, possible.

Jack D. Butler
Department of Horticulture
Colorado State University

COLLEGE GOLF LIST NOW AVAILABLE

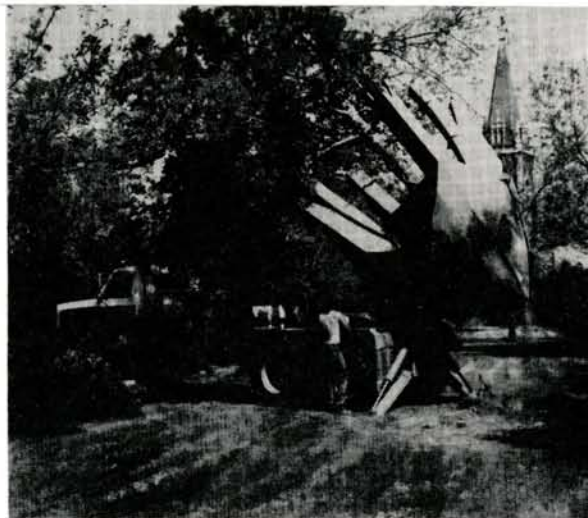
NORTH PALM BEACH, FL — A National Golf Foundation compilation of all two-year and four-year colleges and universities offering men's and women's intercollegiate golf is now available.

Cost for the Information Sheets is \$5 each, or \$8 for both the men's and women's lists. There are 1,169 schools on the men's list and 312 on the women's. The women's list also notes institutions offering financial aid.

"Due to the number of requests for this information and the apparent lack of it elsewhere, we felt there was a definite need for this Information Sheet," explained Annette Thompson, NGF director of education. "We plan to update these fact sheets annually and hope to add more categories each year."

National Golf Foundation
200 Castlewood Drive
North Palm Beach, FL (305) 844-2500

De Vries TREE MOVERS



- Plant and relocate existing trees along fairways.
- Background plantings for greens.
- Windbreaks for tees.

MANHATTAN, ILLINOIS
TELEPHONE: (312) 236-4954

PRECISION BLENDED TOP DRESSING

Custom blended to your specifications
by our modern equipment.

*Buy when you need —
Eliminate costly storage*

We sell an air dried, uniform and
free flowing top dressing.

ASK THE MAN WHO HAS USED IT.

HUMUS — BLACK SOIL

HENRY FRENZER

Area Code 312
658-5303

620 Webster St.
Algonquin, Ill.
60102