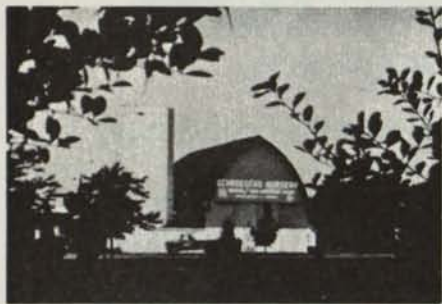


# Schroeder's Nursery, Inc.



## TREES - EVERGREENS - SHRUBS

Specializing in large Caliper shade trees and Ornamentals.  
We also offer complete installation service.

TELEPHONE: (312) 546-9444

Arthur E. Schroeder  
Richard A. Schroeder  
Don Virgens

GRAYSLAKE, ILLINOIS  
23379W Route 60

Nursery on Rt. 60 between Rtes. 12 (Volo) and 83 (Ivanhoe)

## Nels J. Johnson, Tree Experts, Inc.

SINCE 1930

Nels J. Johnson, Sr.  
Nels J. Johnson, Jr. - Karl G. Johnson  
Complete, economical tree service for Private Estates,  
Parks, Municipalities, Golf Courses, Cemeteries,  
Schools, Industrial Areas.

All phases of Arboriculture, Diagnosing, Pruning, Treating,  
Transplanting, Fertilization, Hydraulic and Mist Spraying,  
Removals, Stump Routing, Municipal Forestry, Chemotherapy  
for elms, and other trees.

• FULLY INSURED •

Graduate -- Licensed Arborists

MAIN OFFICE - 912 Pitner Avenue, Evanston, Illinois 60202  
Phones: GReenleaf 5-1877 - GR 5-5255  
Hinsdale, Illinois - FA 5-0970

## GOLF COURSE SUPERINTENDENT POSITION OPEN 18-Hole Park District Golf Course

Mt. Prospect Park District is now accepting applications for the golf course superintendents position. Address all applications and resumes to **John Schaefer**, Superintendent of Buildings and Grounds, Mt. Prospect Park District, 411 S. Maple Street, Mt. Prospect, Illinois 60056. Closing date for accepting applications and resumes is April 17, 1981. Please state your availability in your application or resume.

Qualifications - Class A card golf course superintendent with minimum of three years experience or Class B card assistant golf course superintendent with a minimum of four years experience. Current Illinois pesticide applicators licence. Golf course maintenance experience obtained in Midwest area of the country. Management and some administrative and construction experience necessary for this position.

Good benefits - Salary open

For further information contact: **John Schaefer** (312) 255-5380.

## LABOR-SAVING GRASSES



### GLADE KENTUCKY BLUEGRASS

- Does Great in Sun Or 60% Shade
- Excellent Disease Resistance to Powdery Mildew - Stripe Smut - Leafspot - Rust
- Quick Recovery - Fast Germinating

### Adelphi

KENTUCKY BLUEGRASS

- Greens Up Earlier in Spring - Stays Green Longer In Fall
- Great Resistance To Disease

### CITATION

FINE LEAF PERENNIAL RYEGRASS

- Performs Great In Hot, Humid Areas
- Improved Mowing Qualities
- Blends Well With All Other Grasses

- Low Growing - Tolerates Close Mowing

FOR MORE DETAILED INFORMATION AND  
TEST RESULTS WRITE TO:  
VAUGHAN'S

5300 Ketrine Avenue, Downers Grove, Illinois 60515, (312) 969-6300  
WAREHOUSES LOCATED IN:  
Bound Brook, New Jersey • Landover, Maryland • Ovid and  
Grand Ledge, Michigan • Spokane, Washington

## DAILY ROUTINE OF A GOLF COURSE SUPERINTENDENT

### 1. Start Promptly.

Assign jobs and issue special instructions via **written** daily work schedule, seasonal weekly maintenance outlines and planned agronomic and maintenance improvement programs. Ensure that all equipment is properly serviced and adjusted prior to use.

### 2. Check Course - First Thing in A.M.

Greens and fine turf for disease, wilt, irrigation performance and general conditions. Staff and jobs in progress - observe equipment operation, job procedures and techniques.

### 3. Miscellaneous.

Trouble shooting, recordkeeping, communications, etc.

### 4. Check Course - P.M.

Greens and fine turf for disease, wilt, soil moisture and general conditions. Determine and program irrigation requirements. Jobs done or undone - noting good and bad.

### 5. Written Work Scheduling - Tomorrow.

Review weekly maintenance outline, agronomic and maintenance improvement programs, notes and staff available.

**PLAN YOUR WORK AND WORK YOUR PLAN!**

Start Promptly!