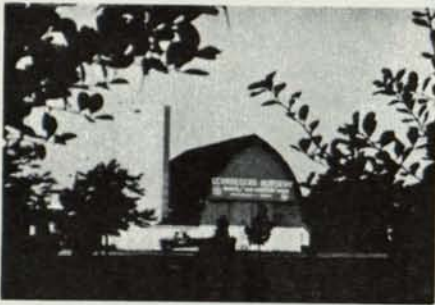


Schroeder's Nursery, Inc.



TREES - EVERGREENS - SHRUBS

Specializing in large Caliper shade trees and Ornamentals.
We also offer complete installation service.

TELEPHONE: (312) 546-9444

Arthur E. Schroeder
Richard A. Schroeder
Don Virgens

GRAYSLAKE, ILL.

Rt. 1 - Box 34-W

Nursery on Rt. 60 between Rtes. 12 (Volo) and 83 (Ivanhoe)

Nels J. Johnson, Tree Experts, Inc.

SINCE 1930

Nels J. Johnson, Sr.
Nels J. Johnson, Jr. - Karl G. Johnson
Complete, economical tree service for Private Estates,
Parks, Municipalities, Golf Courses, Cemeteries,
Schools, Industrial Areas.

All phases of Arboriculture, Diagnosing, Pruning, Treating,
Transplanting, Fertilization, Hydraulic and Mist Spraying,
Removals, Stump Routing, Municipal Forestry, Chemotherapy
for elms, and other trees.

• **FULLY INSURED** •

Graduate -- Licensed Arborists

MAIN OFFICE - 912 Pitner Avenue, Evanston, Illinois 60202
Phones: Greenleaf 5-1877 - GR 5-5255
Hinsdale, Illinois - FA 5-0970

POINTERS ON STORING SPRAY EQUIPMENT

Spray equipment is a necessity but putting it away
in the fall can be a headache. Here are some pointers.

Use rubber gloves and boots when cleaning and
flushing sprayer. Be sure cleaning or flushing water
does not puddle or flow into streams, ponds or ditches.

Drain all spray materials from tank, pump, boom
and hoses.

Remove plugs from the ends of the boom and flush
out accumulations of pesticides or other foreign
materials.

Fill tank with clean water, run the pump, and flush
through the boom.

Fill the tank with clean water again and add 1 ounce
per gallon of household ammonia. Run the pump to
agitate and flush solution through the boom. This
solution should wash most common pesticides out of
the equipment. Rinse several times with clean water
after draining cleaning solution.

Remove nozzles and screens from the boom,
disassemble and clean. Store them dry and immersed
in a jar of light oil.

Drain the spray pump thoroughly and then coat the
inside with soluble oil. This will prevent the pump
from sticking during storage.

If the tank is the type that can rust, rinse and coat
interior with soluble oil.

Be sure boom is drained (remember it can freeze)
and support it so it cannot be damaged by other
machinery.

Remove and clean all hoses, roll them up (avoiding
sharp kinks) and store indoors for the winter.

In storing dusters and hand sprayers rinse thor-
oughly to flush out accumulated pesticide residues. Oil
plunger leathers to prevent drying and brush off rust
and corrosion. Store dusters in a dry place.

Century Rain/Aid

A young boy was helping his grandfather dig
potatoes. After awhile the child began to tire.

"Grandpa," he asked wearily, "what ever made
you bury these things anyway?"

LABOR-SAVING GRASSES



GLADE KENTUCKY BLUEGRASS

- Does Great in Sun Or 60% Shade
- Excellent Disease Resistance to Powdery Mildew - Stripe
Smut - Leafspot - Rust
- Quick Recovery - Fast Germinating

Adelphi

KENTUCKY BLUEGRASS

- Low Growing - Tolerates Close Mowing
- Greens Up Earlier in Spring - Stays Green Longer In Fall
- Great Resistance To Disease

CITATION

FINE LEAF PERENNIAL RYEGRASS

- Performs Great In Hot, Humid Areas
- Improved Mowing Qualities
- Blends Well With All Other Grasses

**FOR MORE DETAILED INFORMATION AND
TEST RESULTS WRITE TO:
VAUGHAN'S**

5300 Katrine Avenue, Downers Grove, Illinois 60515, (312) 969-6300
WAREHOUSES LOCATED IN:
Bound Brook, New Jersey • Landover, Maryland • Ovid and
Grand Ledge, Michigan • Spokane, Washington

FOR THE FINEST IN SOD

THORNTON'S TURF NURSERY

312 - 742-5030

Rt. 2 Box 72

Elgin, Ill.