

To: Midwest Association of Golf Course Supts.  
From: Donald A. Hoffman  
Re: 1978 Golf Committee Report

For the 1978 Golf Season, the meetings of the MAGCS at which golf was played are as follows:

May - Woodridge GC - 33 players  
June - Old Elm GC - 71 players  
July - Lincolnshire CC - 51 players  
August - Ill. Turfgrass Found., Indian Lakes CC  
September - McHenry CC, Annual Tourn. - 94 players  
October - Joint meeting with Wis., Plum Tree National CC

A total of 248 players participated in the golf events. A breakdown by class of players is as follows:

A & AA - 136  
B - 25  
D - 14  
E & EE - 38  
G - 3  
Guests - 32

Total - 248

The golf committee spent \$538.36 out of account. This primarily covered jackets, outside prizes, and trophies. This was supplemented by the \$4.00 paid by each player participating in the golf events. There were approximately \$2500.00 worth of prizes distributed at the golf events made possible through donations and discounts given in the pro shops. The golf committee also gave away 20 wall plaques.

#### 1978 MAGCS Golf Team

Team Captain and MAGCS Champion

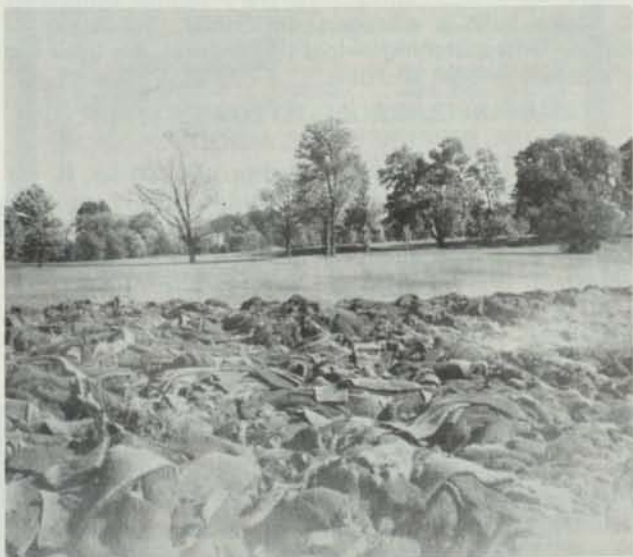
Robert Kronn

The following qualify for team membership by low gross scores:

Ken Goodman  
Doug Spaulding  
Bruce Burchfield  
Tim Miles

Anyone interested in representing the MAGCS Golf Team should contact Bob Kronn as soon as possible.

**Donald A. Hoffman**  
Golf Committee Chairman



If you don't like it, remove it. That is what they did at Chicago G.C. and replaced it with A20, 8,880 square yards.

## INTERESTING FACTS

To find diameter of a circle multiply circumference by .31831.

To find circumference of a circle multiply diameter by 3.1416.

To find area of a circle multiply square of diameter by .7854.

To find surface of a ball multiply square of diameter by 3.1416.

To find side of an equal square multiply diameter by .8862.

To find cubic inches in a ball multiply cube of diameter by .5236.

Doubling the diameter of a pipe increases its capacity four times.

Double riveting is from 16 to 20% stronger than single.

One cubic foot of anthracite coal weighs about 58 lbs.

One cubic foot of bituminous coal weighs from 47 to 50 lbs.

One ton of coal is equivalent to two cords of wood for steam purposes.

There are nine square feet of heating surface to each square foot of grate surface.



Mike Bavier, Supt. at Inverness C.C., Director of G.C.S.A.A. and a candidate for re-election in February 1979 in Atlanta, Georgia. Mike instructs a group of students on a "Basic Golf Course Maintenance Program" sponsored by the Chicago District Golf Association.

The lower picture shows students attending this meeting.

