

We're the
**WATER MOVING
 SPECIALISTS ...**
 and we'll help you
 put it all together

**We've
 got systems**

An engineering staff
 to consult with you
 on irrigation systems design
 & specifications,
 and budget estimates.

**We've
 got supplies**

The largest
 selection & stock
 in the midwest:
 PIPE & FITTINGS:
 PVC • Sewer & Drain (Corr.)
 Polyethylene • Galvanized
 Copper • Aluminum
 Pressure Reg. Valves • Elec. Valves
 Pressure & Flow Switches
 Controllers
 PUMPS & PUMPING STATIONS

EXCLUSIVE FRANCHISED DISTRIBUTOR

RAIN BIRD®

CenturyRainaid

WHOLESALE DISTRIBUTORS

3890 W. 11 Mile Rd., Berkley, Mich. 48072
 (313) 543-7730

22159 Telegraph, Southfield, Mich. 48075
 (313) 356-9137

341 Lively Blvd., Elk Grove Vill., Ill. 60007
 (312) 640-6660

**LABOR-
 SAVING
 GRASSES**



GLADE KENTUCKY BLUEGRASS

- Does Great in Sun Or 60% Shade
- Excellent Disease Resistance to Powdery Mildew — Stripe Smut — Leafspot — Rust
- Quick Recovery — Fast Germinating

Adelphi

KENTUCKY BLUEGRASS

- Greens Up Earlier in Spring — Stays Green Longer In Fall
- Great Resistance To Disease

- Low Growing — Tolerates Close Mowing

CITATION

FINE LEAF PERENNIAL RYEGRASS

- Improved Mowing Qualities
- Blends Well With All Other Grasses

- Performs Great In Hot, Humid Areas

FOR MORE DETAILED INFORMATION AND
 TEST RESULTS WRITE TO:

the VAUGHAN-JACKLIN corporation

5300 Katrine Avenue, Downers Grove, Illinois 60515, (312) 969-6300

WAREHOUSES LOCATED IN:

Bound Brook, New Jersey • Landover, Maryland • Ovid and Grand Ledge, Michigan • Spokane, Washington

Midwest Regional Turf Conference
Purdue University
West Lafayette, Indiana 47907
February 28 - March 2, 1977

ASPHALT DRIVEWAYS — PARKING LOTS — ETC.

"Golf Course Work a Specialty"

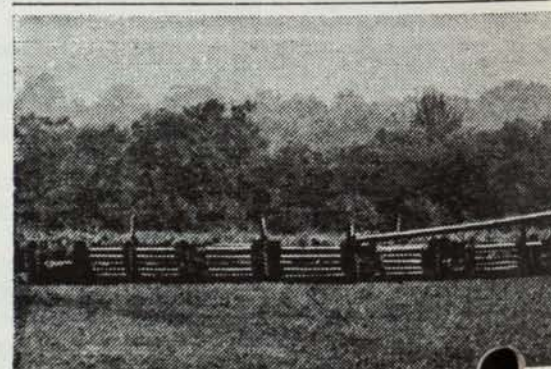
LEMONT PAVING CO.

SAND & STONE

115th & Archer Ave. (Rt. 171) - Lemont, Illinois

RAY MURPHY

257-6701



BIGGEST LAWN MOWER IN AMERICA

This is the biggest lawn mower in America, a trim an entire acre of grass in just one min
 Monroe, Ohio, says his wife was "Always bug



Editor

MIDWEST BREEZES

The **Bull Sheet** has entered into the G.C.S.A.A. Chapter News Bulletins contest. This contest will continue each month during 1977. The editor needs your support. If you have any news that would be of value or just plain interesting news, write it on a card or letter and send it to the editor by the 10th of the previous month. With your cooperation the **Bull Sheet** may have a chance for the grand award. The mail carrier comes to the editor's house six days a week.

Peter Bild, Supt. at Plum Tree National C.C., a short time ago had the good Lord with him. His car came to rest on the railroad tracks. About that time a train came along and demolished the car. Within a couple of days Peter was back at Plum Tree National, counting his blessings.

Bob Williams, Supt. at Bob O'Link C.C. and his wife **Bobbie** are vacationing for two months in sunny Florida. I am sure they are enjoying the warm sunshine while playing golf and keeping in condition to take on those who were not so fortunate this past winter.

Ed and Jean Stewart from River Forest G.C. have turned their car in a southerly direction leaving the cold and snow to the hardy snow birds.

Tom and Regina Byrne of Addison Golf Club have spent the holidays in Florida. As many of you know, Tom had the reputation of being a famous hunter. They say times change, evidently so do people. Which is it, Tom?

Marvin and Lorraine Gruening from Midwest G.C. have decided to leave the snow removing to others, they are enjoying the sunshine in Florida. I am sure they will experience some of the white stuff after they return.

Midwest Regional Turf Conference will be held from Feb. 28th to March 2, 1977. A good program to attend before the busy season starts.

Be sure to attend the big one! The National Conference and Show in Portland, Oregon, February 6 to 11, 1977. This one should be a must.

The Midwest Ass'n. hospitality room in Portland will be in the Hilton Hotel. It will be open on Sunday, Feb. 6th from 4 to 12 P.M.

Some people get perturbed when they see their name misspelled. This does not hold true with our host. At the January 17 meeting at Elmhurst C.C., Thomas DiGuido, supt. was a real host and the editor is sorry.

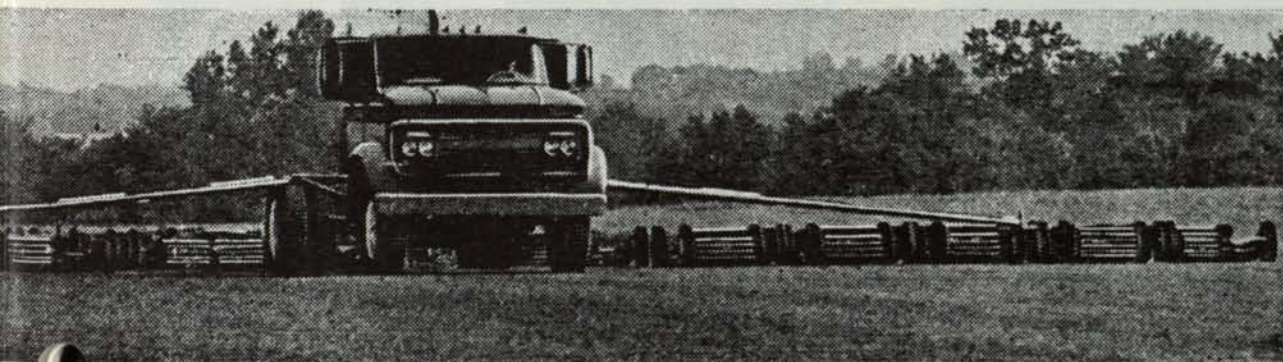
ROSEMAN

2620 CRAWFORD AVE. 864-1842
EVANSTON, ILLINOIS

TURF EQUIPMENT HEADQUARTERS

ROSEMAN GANG MOWERS	FORD TRACTORS
TILLER RAKES	DEDOES AERIFIER
LELY SPREADERS	LOADERS
SEEDERS	LEAF MULCHERS
ROTO TILLERS	ROTARY MOWERS
HOMELITE CHAIN SAWS	HOMELITE PUMPS

SALES ● SERVICE ● PARTS ● RENTALS



According to its builder— it can
ute! Sod farmer Jay Frick of
ging me" because mowing his

farm took so long. So he put together this monster mower, constructed of a truck and 27 mowers like those used on golf courses. Frick says his superclipper—which cuts a 60-foot-wide swath—obviously won't work on the average lawn. But in his case, he has to mow 60 to 100 acres of grass, sometimes twice a week.