

NEW COURSES

ON COURSE FOR EASTER

OPENING

COLLINGTREE Park Golf Club, the UK's first five star combined golf and housing development with leisure resort, is on course for its scheduled Easter 1990 opening and is already inviting corporate business and private membership.

The Northamptonshire complex features a challenging course designed by former US and British Open champion Johnny Miller in consultation with the Jack Nicklaus Organisation. Centrepiece of the 18 holes is the innovative island green at the 18th, probably Britain's first.

Designed for all levels of golfing ability, the main par 72 course is situated in 150 beautifully landscaped acres. There are over six miles of underground piping for drainage purposes and 14 miles of irrigation piping with 11 acres of lakes to control a floodplain area.

Included in the golf development is an exciting new training academy, claimed



Peter Jones, Course Manager described the 18th green shown above as 'really special'. We can see why!

to offer the most sophisticated golf practice facility in Europe with a 16 bay covered range; two par four and one par three practice holes; an indoor video teaching room and a computerised custom fit club centre.

Unique to Collingtree will be free use of buggies for members. Paths have been laid throughout the course to enable buggies, to be used all year round.

In addition to the course itself, plans are being prepared for a luxurious 100 bedroomed country house hotel, due to open in autumn 1992. This will be constructed in the heart of the development.

And already nearing completion is the first phase in a series of prestige housing developments by some of Britain's leading quality builders. More than 200 individually designed executive homes - priced between £230,000 and £400,000 each - are being built on 64 acres of land around the course. Most are being constructed alongside the fairways.

Collingtree Park has been developed by International Resort Holdings Ltd (IRH), a subsidiary company of the Property Company of London PLC.

EDITORS NOTE: Greenkeeping Management wishes to receive details from both the private and public sector about new course developments.

- GREENKEEPING,
- GROUND MAINTENANCE,
- LANDSCAPING,
- GROWING,
- HYDRA-SEEDING,
- IMPROVING POOR SOIL AND CREATING A BETTER ENVIRONMENT

NEPTUNE

The Neptune range, developed and produced in Scotland, includes:—

- NEPTUNE Ground Calcified Seaweed
- NEPTUNE Biostimulant
- NEPTUNE Root Dip
- NEPTUNE Soil Improver
- NEPTUNE Special Mix
- NEPTUNE Plus
- NEPTUNE Clay Crumble
- NEPTUNE Green
- NEPTUNE Universal Organic Compost
- NEPTUNE Sea Spray
- NEPTUNE Wetting Agent



These are the ORGANIC SEAWEED soil conditioners and improvers. There is nothing better.

For complete information contact:

NEPTUNE SCOTLAND LIMITED,
 OLDHALL WEST INDUSTRIAL ESTATE,
 SHEWALTON, IRVINE. TEL: (0294) 311325.



WETTING AGENTS

THE LONG HOT SUMMER - DID WETTING AGENTS PERFORM?

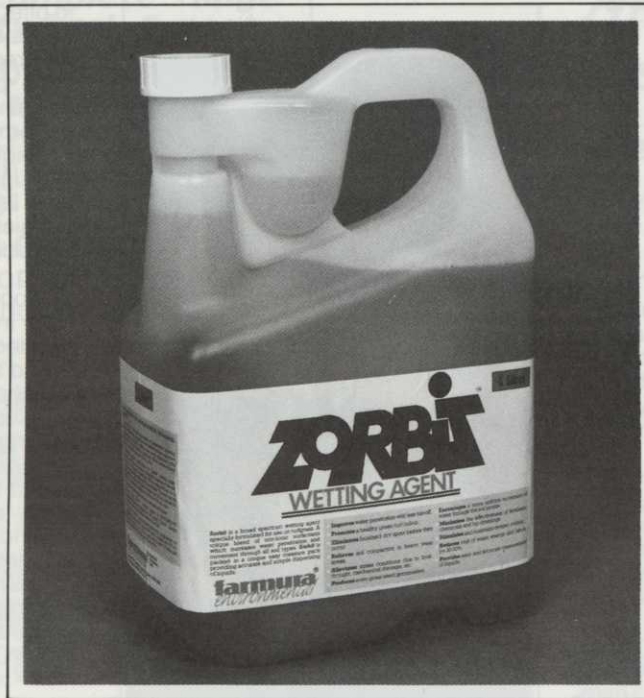
TAKING a look at field results and the results of controlled scientific trials - the answer is "some did and some did not". We take a closer look at what happened and give some reasons why to help you make decisions about wetting agent use this year to give the right results.

The benefits for turfgrass management include prevention or alleviation of dry patch, penetration of water through thatch build up, penetration of water into hard, dry, compacted areas, more uniform turfgrass cover and quality and increased water efficiency because less water is wasted by run off and evaporation. Problems with several of these situations were experienced last summer.

Did wetting agents perform? Yes. Were there differences in performance? Yes. Both in products and in methods of use. For example, trials conducted by STRI during the last two years have revealed significant difference in the effectiveness of wetting agents for increasing infiltration into turfgrass on golf courses.

Differences have also been observed in the amount of product required to achieve results, the actual cost of using different materials, the residual of applications, etc. Several wetting agents perform quite consistently well - some do not seem to work at all. STRI trials have also shown differences in the performance of preventative as compared to curative type application programmes.

Results from the recent "long, hot summer" showed that AquaGro used preven-



tatively, i.e. commencing applications in the Spring, BEFORE dry patch appears, was effective in keeping dry patch from forming. By contrast, a curative program, i.e. not beginning wetting agent applications until some dry patch is evident, eventually alleviated the dry patch problem - but not without stress occurring to the turfgrass. These results are consistent with findings in several other countries where the AquaGro is used for prevention or alleviation of dry patch.

Wetting agents did perform last summer. There are products on the market that work well and the better informed greenkeeper who uses them strategically will benefit from their use.

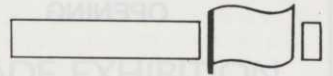
FARMURA ENTERS ZORBIT!

FOLLOWING ten years of research and development Farmura Ltd have entered the turf wetting agent market with their new broad spectrum wetting agent, Zorbit. Zorbit contains a unique blend of non-ionic surfactants designed to assist water penetration and movement through a wide range of soil types.

In addition to improving water penetration, eliminating dry spots and relieving the effects of soil compaction Zorbit will maximise the benefits of fertiliser and top dressing applications and stimulate deeper root development.

Zorbit is supplied in 6 litre packs which provides accurate, simple and economic dispensing of liquids.

For further information contact Farmura Ltd., Stone Hill, Egerton, Ashford, Kent, TN27 9DU. Tel: (023 376) 241/581.

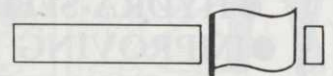


NEW SYSTEM FOR APPLYING AQUA-GRO WETTING AGENT

SUPATURF have introduced a new system for applying their leading wetting agent, Aqua-gro - the Aqua-gro Advantage System.

This brand new system incorporates a ready-to use applicator which fits quickly and easily onto a standard hose, and an Aqua-Gro pellet container. By simply fitting the pellet container into the applicator, Aqua-gro can be applied through a hose pipe during normal irrigation, allowing water to move uniformly into root zones. The high volume of water used ensures complete turf safety under any weather conditions providing temporary relief for localised dry spots, puddles, compaction or thatch.

The Advantage Applicator and fittings are able to handle the high pressures normally used to operate irrigation systems. The pellet will dissolve in about 1 hour at water pressures of 60 to 90 psi and one pellet should treat up to one acre or 6 to 7 average greens at a rate of 10 minutes per green.



farmura
environmental

IN 1989

FARMURA LAUNCHED 'ZORBIT' THE NEW TURF WETTING AGENT FORMULATED SPECIFICALLY FOR USE ON FINE TURF

RESULT: GREENKEEPERS VERY PLEASED. COMPETITORS NOT PLEASED AT ALL!

STONE HILL, EGERTON, ASHFORD, KENT, TN27 9DU. TELEPHONE (023 376) 241/581

ZORBIT

WETTING AGENT

6 LITRE easy dispenser pack

- Promotes a healthy green turf colour
- Eliminates localised dry spots before they occur.
- Relieves soil compaction in heavy wear areas
- Encourages a more uniform movement of water through the soil profile
- Stimulates and maintains deeper rooting

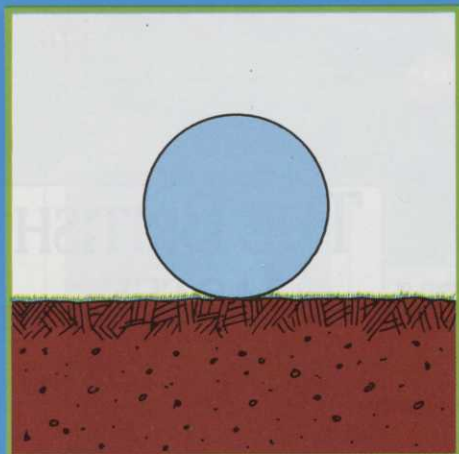
- For early Spring Greenup.
- Reduces time spent watering by up to 50%.
- Improves effectiveness of systemic fungicides.
- Alleviates dry spot problems.
- Drains excess water quickly.
- Reduces costs — saves time.

- Maintains deeper rooting.
- Grows more uniform turf and plants.
- Improves soil insecticide control.
- Reduces frost damage.
- Reduces potential for disease.
- Increases uniformity and quality.

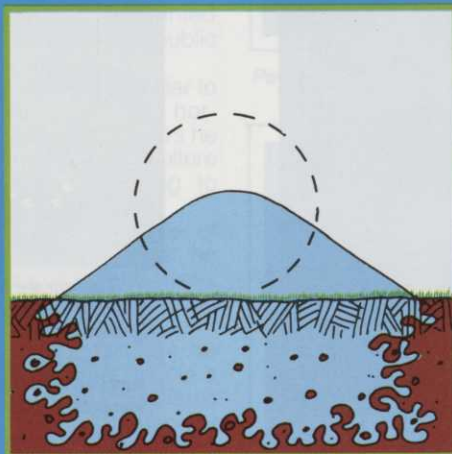
make
your
water
work
with...

AQUA-GRO

Water drops stick together, do not penetrate, wet through, or drain in soil.



AQUA-GRO eases surface tension, water moves into and through soil freely and uniformly.



Uniform water movement means better plant and turf growth, aeration and drainage. No dry spots! No wet spots!



the wetting agent you can trust

SupaturfTM

Supaturf Products Limited
Old Fosse Works, Coventry Road
Narborough, Leics LE9 5GJ.
Tel: (0533) 750256 Fax: (0533) 750973

The Perfect Mixture for Every Application



Grade A Amenity Mixtures provide the basic essentials for a greener Britain. High quality grass seed with good persistence, hard wearing resilience with good colour and, in many cases, considerably reduced maintenance costs.

24 different mixtures, selected to meet the most exacting professional standards, are available for the whole range of amenity uses.

Qualified technical advice on any aspect of amenity seed use is available from the acknowledged experts in the industry.

**GRADE
A
AMENITY
MIXTURES**

keeping Britain green

Phone for a free catalogue now



BRITISH SEED HOUSES LTD

WARRINGTON 0925 54411 · BRISTOL 0272 823691
LINCOLN 052286 714 · EDINBURGH 0968 78480
BANBRIDGE 08206 22207

INTURF

IN THE MIDLANDS
IN YORKSHIRE
IN THE SOUTH
IN SCOTLAND

A comprehensive range of cultivated turf for all sports ground and landscaping requirements.

INTURF LIMITED
11b REGENT STREET
POCKLINGTON
YORK YO4 2KN
Telephone: (0759) 304101
Fax: (0759) 305229
Telex: 57801 TOWER G

For Scotland
Telephone 031 663 6617
Fax: 031 663 0651

IN TOUCH WITH

"THE BEST TURF ON EARTH"



Lindum are Masters of growing fine turf for golf greens and tees.

THE BRITISH MASTERS.

"I am absolutely delighted with the quality of the Lindum turf supplied for the greens of our new south course." Michael Hunter, Estate Manager, Wentworth Golf Club.

Need we say more? If so, ask for a copy of our new brochure.

LINDUM 
FOR LANDSCAPE AND LEISURE

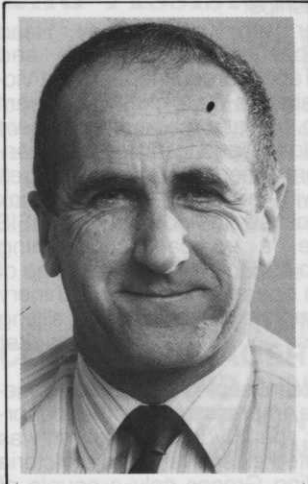
For more information, telephone Stephen Fell, 065 261 329, Lindum Seeded Turf, Church House, Horkstow, Barton on Humber, South Humberside DN18 6BG.

THE MASTERS OF FINE TURF PRODUCTION

MOVEMENTS AND MURMURINGS

NEW HUXLEYS APPOINTMENT HIGHLIGHTS MAJOR EMPHASIS ON PRODUCT DEVELOPMENT AND PRODUCTION

EDDIE Fox, a member of the Huxleys grass machinery team for 20

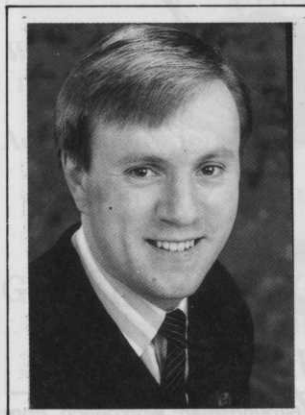


Eddie Fox

CLAYMORE GRASS MACHINERY NEW APPOINTMENT

IAN Rotherham has joined Claymore Grass Machinery as Northern Area Sales Representative. Ian will be responsible for the sales and marketing support to Claymore customers in Northern England up to the Scottish Borders.

Ian, who is 29, was previously general manager with a prominent horticultural machinery retail group and has previous experience as a retail sales representative for professional grass machinery.



Ian Rotherham

years, has been appointed a director of the company. He takes on overall responsibility for the new product development and production departments of the business, which is located at The Dean, New Alresford, Hants.

The appointment reflects the new level of importance acquired by equipment development and manufacture within Huxleys following the company's decision to concentrate its activities on the sales, service and hire of its own Huxley product range.

"Eddie's exceptional talents and experience of both the industry and the company will help ensure that these objectives will be met fully in coming years," commented Mr Edward Huxley, the founder of the business. "He has made an immense contribution to the past development of the company, and his appointment as a director reflects the major emphasis now being placed on new product developments and production.

Married with two daughters, Eddie comes from a farming family and trained as an agricultural engineer at Rycotewood after leaving school. He spent some time in the automotive trade prior to joining Huxleys in 1969. His interests include photography, carpentry and golf - when time allows!

ROGER AT THE HELM

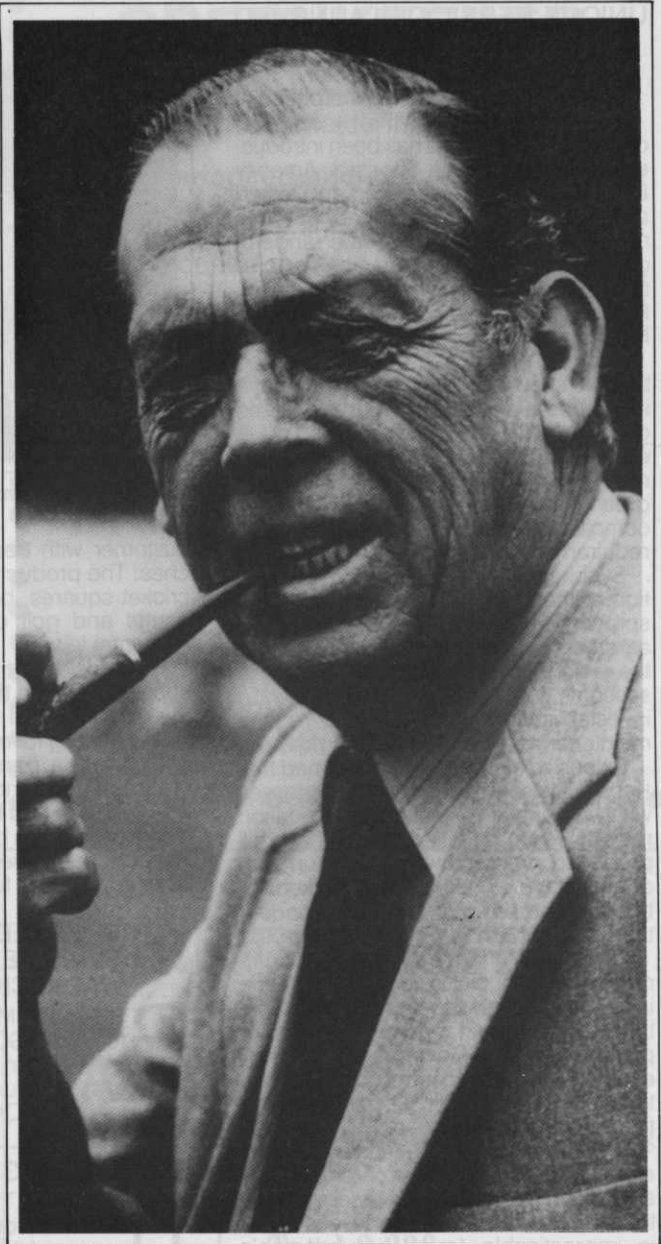
CHARTERHOUSE Turf Machinery, the specialist in turf management equipment, has appointed **Roger Newman** as its public relations officer.

Roger, 40, will be familiar to many people in the horticultural world for 19 years he was news editor of Horticulture Week magazine, leaving to work freelance in 1988.

A former council member of the Historic Gardens Trust, he is the author of several books on subjects ranging from the Vikings to English rural life.

Of his new appointment, he said: "I am delighted to join a young, vibrant and enthusiastic team. In the turf management field Charterhouse is already a force to be reckoned with, and I look forward to its continued expansion."

Roger lives in West Sussex and his hobbies include deep sea fishing and gardening.



Peter Dobereiner



Roger Newman

VETERAN golf correspondent, Peter Dobereiner, has retired from The Observer in order to pursue a new career as a golf course designer and consultant. He intends to restrict his writing commitments to books and magazines and to specialise in creating low budget golf courses. Dobereiner's experience in farming and golf has convinced him that economic construction and maintenance charges need not mean a sacrifice in the quality of golfing values. His first course opens next year and he has a number of projects in the planning stages.

Please find further Recruitment ad on page 1

PRODUCT FOCUS

UNIQUE HERBICIDE LAUNCHED BY SYNCEMICALS

KNOT OUT, a completely new answer to the perennial problem of weed invasion in newly sown or oversown grass areas has been introduced by Synchemicals Sports & Amenity Division. Containing the tried and tested active ingredient Isoxaben, Knot Out's residual action controls a wide range of germinating broad-leaved weeds, plus the time old enemy of the turf manager, knotgrass. The approved product MAFF No. is 04701.

Sport & Amenity have taken the opportunity to supply the product in a novel syringe applicator pack. Each premeasured dose is sufficient to treat 540 sq.m – equivalent in area to a football pitch goal mouths/centre circle or an average golf green. It couples easy handling with full compliance of the very latest safety requirements.

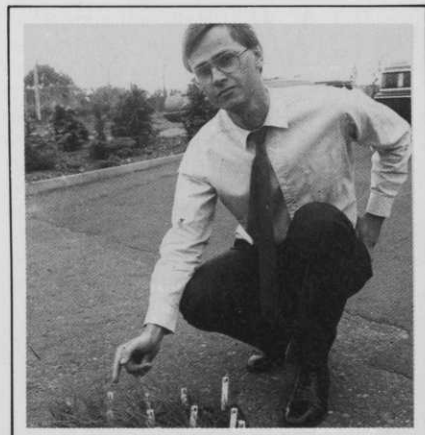
Synchemicals recommends application, either by knap-sack or mounted sprayer two days after seeding a well aerated, moist surface. Left undisturbed, the residual herbicide barrier will offer a season's weed control. Once the sward is established it can join the regular maintenance treatment programme.

Extensive trial work has confirmed that Knot Out is completely safe to all grasses with no varietal restrictions. Application rates of ten times that advocated have still produced grass growth. Major turf producers have all expressed marked interest in the product, and independent trials at STRI are currently in progress.

Technical Manager, Charles Platt comments that Knot Out is completely unique in its timing, weed spectrum and application. The product has a low vapour pressure and the Government approval enables pedestrian controlled equipment to be safely and legally used – a bonus for less favourable areas.

Other products on the market, he says either carry weed control and spray equipment restrictions or a recommendation not to re-seed within six weeks which is impracticable for a groundsman's programme.

Local authorities are seen as a major



Charles Platt: "Grass growth from ten times application rate."



Trevor Holmes, Commercial Sales Manager with new Knot Out.

customer with treatment of football pitches. The product is equally suitable for cricket squares, bowling greens, tennis courts and golf courses and also ornamental lawns.

He considers that the current weed species listed on the label do not reflect the true potential for Knot Out. "Apart from the listing for mayweeds, chickweed, speedwells, parsely-piert, common mouse-ear and knotgrass, excellent control of other broad leaved weeds such as plantains has also been achieved. It is envisaged that these will be added to the label in the near future."

INCREASED EFFICIENCY WINS TENDER FOR WARWICK SERVICES

GROUNDS Maintenance Manager for the DSO, Warwick Services, Mr. Quentin Nichols together with Assistant Grounds Maintenance Manager, Terry Cripps examined tradi-

tional greenkeeping practices closely in their efforts to bid successfully for the first landscape maintenance package for Warwick District.

This initial package, some 33% of the total landscape maintenance, has a value of £375,000. The package consists of a wide variety of areas including many fine turf areas. Amongst them is the increasingly popular Newbold-Comyn Golf Club in Royal Leamington Spa and the prestigious Victoria Park Bowling Greens, home of the Ladies National Championships.

Together with Kevin Kibney, Head Greenkeeper at the golf club and Veronica Tabor, Greenkeeper at the Victoria Park site, the Warwick Services team decided to look at a range of machinery which could be used to increase efficiency and compliment the existing range.

It was with this in mind that Warwick Services chose to look at the SISIS Hydrocore, a vertical action tining machine to add to their existing range of pedestrian operated fine turf machinery to speed up hollow coring and slitting operations on greens and cricket squares.

All the greenkeeping staff and management were impressed with the performance of the Hydrocore which was demonstrated extensively on the Victoria Park Bowling Greens only a couple of weeks prior to the Ladies National Finals! The machine was purchased a few weeks later and although based at Victoria Park it will also be used on the golf course and throughout the area covered by the contract.

In addition to the SISIS Hydrocore, SISIS Rotorakes play an important part in the turf maintenance programme for spring and autumn renovation work and summer grooming on all greens. Greens are cut daily using Lloyds Paladins and rolled regularly during the playing season.

JUNIOR GROUNDSMAN

R& R (UK) LTD have introduced the Junior Groundsman. This mini-version of the popular Groundsman Workbench has been specially designed for smaller workshops. The machine for repair is simply wheeled on to the 1m x 0.5m worktable, then raised to a comfortably working height by means of a foot operated hydraulic ram.

The Junior Groundsman can lift up to 300 kg in weight. Its compact size and portability make it ideal for mobile units and workshops where space is limited. Paul English, R & R's Managing Director, commented: "The health of staff is of absolute importance in today's workplace. Time lost due to back injury through lifting heavy machinery creates major problems – especially for small businesses. The addition of a Junior Groundsman in a service department not only increases efficiency, but is a more professional approach to servicing."

The workbench is priced at £399 plus VAT.



The Junior Groundsman workbench from R & R (UK) Ltd.

Staverton Park Hotel

and Golfing Complex
★ ★ ★



2nd Assistant Greenkeeper Required

To join existing team under the leadership of Course Manager, Howard Middlebrook. Applicants should be fully qualified, preferably members of BIGGA and be able to demonstrate a good all round knowledge of greenkeeping skills. This is a live out position offering good working conditions and excellent future prospects and a salary in line with current recommendations.

In the first instance please write giving full details to:-

**MR HOWARD MIDDLEBROOK,
COURSE MANAGER, STAVERTON PARK
HOTEL AND GOLFING COMPLEX,
STAVERTON, DAVENTRY,
NORTHAMPTONSHIRE NN11 6JT**

HEAD GREENKEEPER

required for busy public pay as you play
Golf Centre near Maidenhead in Berkshire.

An **experienced and active person** who
wishes to work hard to improve and
maintain a very successful Golf Course,
opened in 1985, is required.

The position is for a person of **proven
ability** with suitable qualifications and
experience in all aspects of course
management and machinery maintenance.

Excellent accommodation is available
together with a **first class salary and
conditions.**

Please apply to:

**MANAGING DIRECTOR
C.S.L. ENTERPRISES LIMITED
HAWTHORN HILL GOLF CENTRE, DRIFT
RD., HAWTHORN HILL, BERKS SL6 3ST
TELEPHONE 0628 771030
FAX NO. 0628 31023**

Course Manager/ Head Greenkeeper

A fully qualified course manager/head
greenkeeper is required for busy 18 hole
course in West Sussex. The successful
applicant must have had at least 3 years
experience as a head greenkeeper or 1st
assistant, and must have passed the most
recent examinations in course management.
The course has a fine reputation, and the
successful applicant will be expected to
maintain the standards obtained by his
predecessor.

With this demanding post goes an attractive
remunerative package commensurate with
the sort of candidate we are seeking.
Accommodation can be available if required.

Apply in first instance with brief C.V. to:

**BOX NO. F8
GREENKEEPING MANAGEMENT
SPENCER HOUSE, MARKET
LANE, SWALWELL, TYNE &
WEAR NE16 3DS**

GREENKEEPING

MANAGEMENT

ANNOUNCEMENT

In April 1989 there were 2,134 Greenkeeping
Members of BIGGA
and 204 other members.

Total 2,338

On 20th October, 1989,
there were 3,066 Greenkeeping Members
and 318 other members.

Total 3,384

*... AND THERE HAS BEEN CONSIDERABLE
GROWTH SINCE ... SO MUCH SO IN FACT
THAT 1990 FIGURES ARE STILL BEING
COMPILED*

Take advantage of the rapidly increasing number of
customers Greenkeeping Management can provide for
your company... NOW!

Find out how we can help your business do more
business

**RING 091 496 0003 and ask for Bill Lynch or
FAX him on 091 496 0004**

Please find further Recruitment ad on page 11.

Verulam Golf Club

'Home of the Ryder Cup'
require a



Deputy Head Greenkeeper

Applicants should be City and Guilds qualified or the equivalent, have a sound knowledge of modern greenkeeping methods including maintenance of machinery, with proven man-management abilities.

SALARY NEGOTIABLE

Applications in writing with full C.V. to:

Verulam Golf Club
226 LONDON ROAD, ST. ALBANS,
HERTFORDSHIRE AL1 1JG

ASSISTANT GREENKEEPER

Required

With suitable qualifications and experience (minimum 3 years) in all aspects of course and machinery management.

To start April 1st 1990

Applications in writing to:
G. Lloyd, Golf Course Management
(Richmond) Ltd., Roehampton Gate,
Priory Lane, Richmond Park,
Richmond SW15 5JR

FRANCE

GREENKEEPERS WANTED

French company providing a service for newly constructed courses in France seeks highly motivated candidates for Head Greenkeepers.

Candidates must be experienced in all aspects of course maintenance, management of machinery, budgets and personnel

Packages negotiable

Tel. Paris (010331) 45 90
42 33

or write to

Madame Glen, 37 Rue de
Noiseau, 94370, Sucy en
Brie, France

HEAD GREENKEEPER

Required for a 9 hole course which is to be totally reconstructed near Frankfurt in West Germany at the Golf Club Darmstadt Traisa.

Excellent opportunity to be in at the beginning and to influence course construction.

The ideal applicant will be 30-45 years of age, experienced in all aspects of greenkeeping and modern machinery.

Salary negotiable according to qualifications and experience.

Applications with c.v. to:

GOLF-CLUB DARMSTADT TRAISA EV, SEKRETARIAT, DIPPESHOF, D-6109 MÜHLTAL-TRAISA WEST GERMANY



FULFORD (YORK) GOLF CLUB LTD

require a

HEAD GREENKEEPER

for this prestigious course which has been a regular European Tour venue since 1971

The successful applicant will be fully experienced in all aspects of greenkeeping and course management,

- have detailed knowledge of modern machinery
- be fully conversant with automatic watering systems
- have proven ability to supervise and motivate staff.

SALARY NEGOTIABLE,
NO ACCOMMODATION AVAILABLE

Written applications with full C.V. together with the name and address of two referees to:

Secretary/Manager
Fulford (York) Golf Club Limited
Heslington Lane
York YO1 5DY



THE OFFICIAL PUBLICATION OF THE
BRITISH AND INTERNATIONAL
GOLF GREENKEEPERS ASSOCIATION

1990 BIGGA GREENKEEPER MEMBERSHIP PACKAGE

BIGGA offer a comprehensive membership package for greenkeeper members. The full range of services and benefits is in line with a progressive professional Association. Full details are available from Headquarters Office on request, but the package includes:-

- (i) Monthly copies of Greenkeeping Management — the Association's official publication.
- (ii) The annual Journal and quarterly Bulletins of the Sports Turf Research Institute.
- (iii) Full Legal Advisory Service, including personalised card.
- (iv) Full Employment Cover.
- (v) Full Personal Injury Cover.
Pursuit of civil claims by the Insured for damages, specific performance or injunction arising from or out of
 - (a) A contract of employment.
 - (b) Death or personal injury of the Insured from any cause.
- (vi) Beneficial Insurance Options in respect of Car, Home — Building and Contents, and Vehicle Breakdown.
- (vii) BIGGA Enamelled Lapel Badge.
- (viii) BIGGA Membership Card.
- (ix) Use of Placement Referral Scheme.
- (x) BIGGA car badge sticker and golf bag tag.
- (xi) Personal Accident Cover, providing capital sums for: Death (£5,000), loss of use of one or more limbs and eyes (£5,000), permanent total disablement lasting 104 weeks at the end of which being beyond hope of improvement (£5,000).

However, a most attractive feature of the negotiated scheme will enable members suffering temporary total disablement in excess of seven days to receive a weekly income of £25 for a maximum of 104 weeks.

Also, it will be possible for members to purchase additional units at their own cost within the scheme and a pamphlet incorporating an application form will be made available upon payment of subscription.

INTERNATIONAL MEMBERS — All items in the package are available to members both in the Republic of Ireland and internationally with limitations on items (iii), (iv) and (v). The personalised card can be used for seeking legal advice, but this advice will relate to either English or Scottish Law. The card can be used when the member is visiting Great Britain, both for advice and in respect of any claims arising during or from such visits.



BIGGA 1990 GREENKEEPER MEMBERSHIP APPLICATION FORM

(not to be completed by 1989 members)
(PLEASE COMPLETE FULLY IN BLOCK CAPITAL LETTERS)

FULL NAME..... NAME OF EMPLOYER.....
HOME ADDRESS..... ADDRESS.....
.....
COUNTY..... POSTCODE..... COUNTY..... POSTCODE.....
TELEPHONE..... TELEPHONE.....
DATE OF BIRTH..... POSITION HELD.....
PERSONAL QUALIFICATIONS..... DATE OF APPOINTMENT.....

I HEREBY APPLY FOR MEMBERSHIP OF THE BRITISH AND INTERNATIONAL GOLF GREENKEEPERS ASSOCIATION AND AGREE TO ABIDE BY THE CONSTITUTION AND RULES OF THE ASSOCIATION

SIGNED..... DATED.....

SUBSCRIPTIONS ARE NOT TO BE SENT WITH THIS FORM BUT WILL BE INVOICED SEPARATELY.

FEES PAYABLE WILL BE:

Deputy Course Manager/Deputy Head Greenkeeper.....£33.00
20 Years of Age or Under.....£20.00

Course Manager/Head Greenkeeper.....£36.00
First Assistant/Assistant Greenkeeper*.....£31.00
International Members - All Greenkeeping Staff.....£48.00

*The First Assistant is a post designed to recognise a third-in-charge where appropriate to the size of the Club. In cases where the First Assistant is the recognised Deputy, the Deputy Course Manager/Deputy Head Greenkeeper subscription rate should apply.

REF. - G.M. 2/90



BIGGA 1990 ASSOCIATE/COMPANY MEMBERSHIP APPLICATION FORM

(not to be completed by 1989 members)

PLEASE COMPLETE FULLY IN BLOCK CAPITAL LETTERS:

FULL NAME..... NAME OF COMPANY (where applicable):.....
HOME ADDRESS.....
.....
PREFERRED MAILING ADDRESS.....
.....
COUNTY..... COUNTY.....
POSTCODE..... POSTCODE.....
TELEPHONE..... TELEPHONE.....
POSITION.....

CATEGORIES OF MEMBERSHIP:

ASSOCIATE/COMPANY £50.00 (includes 1 year's subscriptions to 'Greenkeeping Management')

CORPORATE (10 or more) £500 maximum. Add £20 for each additional member requiring a magazine.

I HEREBY APPLY FOR MEMBERSHIP OF THE BRITISH AND INTERNATIONAL GOLF GREENKEEPERS ASSOCIATION AND AGREE TO ABIDE BY THE CONSTITUTION AND RULES OF THE ASSOCIATION.

I wish to join as a member and enclose my cheque as indicated above in the sum of £ made payable to BIGGA. A receipt will not be issued unless specifically requested.

SIGNED..... DATED.....

PLEASE NOTE THAT ASSOCIATE/COMPANY MEMBERSHIP IS ON AN INDIVIDUAL BASIS

REF. - G.M. 2/90

READER REPLY PRE-PAID CARD JANUARY 1990

Please check the appropriate box for each category

- How did you receive this issue of GM?
 - 1. It is part of my BIGGA membership benefits.
 - 2. I am a subscriber.
 - 3. This issue was given to me by a member or subscriber.
 - 4. This issue was sent to me by post.
- Type of facility
 - A. Private golf course
 - B. Municipal golf course
 - C. Hotel/Resort golf course
 - D. Park
 - E. Sod Farm, Nursery
 - F. Manufacturing
 - G. Business
 - H. Other
- If at a golf course, number of golf holes
 - 1. 9 hole
 - 2. 18 hole
 - 3. 27 hole
 - 4. 36 hole
 - 5. Other
- Job title
 - A. Head Greenkeeper/ Course Manager
 - B. Club Official
 - C. Owner
 - D. Manager
 - E. Architect
 - F. Builder
 - G. Turf Specialist/Technician
 - H. Golf-Related Personnel
 - I. Dealer/Distributor
 - J. Other - Specify
- Purchasing Authority
 - 1. Recommend
 - 2. Specify
 - 3. Approve
 - 4. Not involved
- Reason for inquiry
 - A. Immediate purchase
 - B. Future Project

Please tick box if you want to advertise in the Buyers Guide. Simply fill in the form on this pre-paid card.

★ ★ ★

Place below the advert Flag Number — to receive more information about the products and services advertised in this issue.

Please complete all the above questions

Mr. Ms.

FIRST NAME	SURNAME
TITLE	
COMPANY OR COURSE	
ADDRESS	
CITY	POSTCODE
WORK PHONE	

Signature..... Date.....

REF. - G.M. 2/90

BUSINESS REPLY SERVICE
Licence No. NT 1638

2

GREENKEEPING MANAGEMENT
SPENCER HOUSE
MARKET LANE
SWALWELL
NEWCASTLE UPON TYNE
NE16 3DS



Don't be **GREEN** take this opportunity
now for **KEEPING** a tight grip on your company's profits
Show your **MANAGEMENT** skills by buying this space.
Tel: Bill Lynch on 091 496 0003.

BUSINESS REPLY SERVICE
Licence No. NT 1638

2

GREENKEEPING MANAGEMENT
SPENCER HOUSE
MARKET LANE
SWALWELL
NEWCASTLE UPON TYNE
NE16 3DS

BUSINESS REPLY SERVICE
Licence No. NT 1638

2

GREENKEEPING MANAGEMENT
SPENCER HOUSE
MARKET LANE
SWALWELL
NEWCASTLE UPON TYNE
NE16 3DS





Cleveland Golf Club

require a

1ST ASSISTANT GREENKEEPER

Applications are invited from suitably qualified persons.

Salary in excess of £8,000

No accommodation is offered

Apply in writing to the Secretary enclosing c.v.'s.

CLEVELAND GOLF CLUB
Queen's Street, Redcar,
Cleveland, TS10 1BT

Rothley Park Golf Club require a

HEAD GREENKEEPER

Post available from March 1990

The course is parkland covering 130 acres. Candidates will:

- Have a thorough knowledge of and qualifications in current greenkeeping methods.
- Possess a sound understanding of modern machinery
- Be able to motivate and manage existing staff.

The successful applicant will be expected to produce the golf course in optimum condition throughout the year.

Remuneration is by negotiation, but is unlikely to be less than £15,000 p.a.

No accommodation is available, but assistance will be given in relocation expenses.

*Applications together with full c.v. to:
The Secretary, Rothley Park Golf Club,
Wesfield Lane, Rothley, Leicestershire.*

Aloa Golf Club (Schawpark)

HEAD GREENKEEPER

Applications are invited for the above post at one of Central Scotland's premier courses. Laid out by James Braid in 1936 this undulating, parkland-type course is within easy reach of city centres and the motorway network.

Applicants should be suitably qualified and experience. Salary conditions will be negotiable.

Applications in writing with full particulars to

**Mr A.M. Frame, Honorary
Secretary, 19 Stalker
Avenue, Tillicoultry,
Clackmannanshire FL13
6PR**

All applications should be lodged by 2nd
March 1990



SALES REPRESENTATIVE

FOR KENT AND EAST SUSSEX
is required by this long-established
Company which covers London and
South East England

We are looking for an energetic, enthusiastic and reliable person who will be selling turf care products and machinery to Golf Clubs, Sports Clubs, Local Authorities, etc. Whilst some experience in amenity horticulture would be an advantage it need not be essential as full training will be given. The position may be of interest to someone with a greenkeeping, horticultural or garden-machinery background who is seeking a new challenge in the 1990's. A good basic salary will be paid plus commission plus car plus other benefits.

SALES OFFICE ASSISTANT

with experience in amenity horticulture and confident telephone manner, is also required in our Head Office at Worcester Park, Surrey.

Applications, in strictest confidence, with C.V. to:
**MR J.C. PARKER, MANAGING DIRECTOR,
T. PARKER & SONS (TURF MANAGEMENT) LTD.
WORCESTER PARK, SURREY, KT4 7NF**

BOGNOR REGIS GOLF CLUB

Requires an

Assistant Greenkeeper

Applicants must be suitably experienced, qualifications preferable, but college release will be given.

Salary Negotiable, no accommodation available

Please apply in writing with CV to:

THE SECRETARY, BOGNOR REGIS GOLF CLUB, DOWNVIEW ROAD, FELPHAM, BOGNOR REGIS, WEST SUSSEX PO 22 8JD Telephone 0243 821929

City & Guilds Phase 2 Qualified Greenkeeper

SEEKS POSITION AS

Assistant/1st Assistant

I am 31 years, married with two children, and looking to re-enter the profession of Greenkeeping after an absence of one year. Domestic circumstances, interrupted a career which was heading towards management, and I am very keen to continue as soon as possible.

Willing to move. South of UK preferred.

Full CV and references available

Contact: Mr. N. P. Beckford, Flat 1, Eastleigh, Waterloo Road, Lowestoft, Suffolk, NR33 0AA. Telephone: (0502) 563892 anytime.

Worthing Golf Club

require a

1ST ASSISTANT GREENKEEPER

For this well known 36 hole course.

All applicants should be qualified, have good practical experience, and also be familiar with modern machinery.

A salary of £9,000 plus, and bonuses.

Accommodation may be given.

For all application forms contact:

Worthing Golf Club, Links Road, Worthing, West Sussex, BN14 9QZ.

Tel: The Clubhouse (0903) 60801 or The Course Manager's Office (0903) 830019.

PEACEHAVEN GOLF CLUB

Require an experienced

HEAD GREENKEEPER

Salary and conditions negotiable according to experience.

★ No accommodation available ★

Apply with full C.V. to:

THE SECRETARY, PEACEHAVEN GOLF CLUB, BRIGHTON ROAD, NEWHAVEN, EAST SUSSEX BN9 9UH

BASSETLAW DISTRICT COUNCIL RESOURCES AND LEISURE DIVISION

Deputy Head Greenkeeper

Grade 4, i.e. £125.29 per week (plus bonus and overtime)

Kilton Forest Golf Course, Kilton, Worksop, Notts

A Deputy Greenkeeper is required for our busy Kilton Forest Golf Course at Worksop. This is a first-class opportunity to utilise your Greenkeeping skills.

He/she must be in possession of City and Guilds Stages 1 and 2 Greenkeeping, or equivalent qualifications.

We are seeking a dedicated professional interested in high profile maintenance. In return we can offer excellent pay and conditions. Including bonus and overtime, the current rate of pay is up to £9,000 per annum. Closing date: Friday 2nd March 1990.

Application Forms may be obtained from the Personnel Department Recruitment Service, Central Depot, Hundred Acre Lane, Carlton Forest, Worksop, Notts., S81 0TS or telephone Worksop (0909) 730903 (24 hour Ansaphone Service).

SUNNINGDALE GOLF CLUB

Applications are invited in connection with the appointment of

HEAD GREENKEEPER/COURSE MANAGER

The present incumbent, Jack McMillan, is leaving after 9 successful years to become a management consultant.

Responsibility will cover the management of two championship golf courses and applicants should be aware that the highest standards of maintenance and presentation are required.

Applicants should be fully qualified in all aspects of modern course management. The ability to lead and motivate staff is essential.

An excellent package will be offered to the successful applicant

ACCOMMODATION AVAILABLE

Applications an CV's to:

The Secretary, Sunningdale Golf Club, Ridgemount Road, Sunningdale, Ascot, Berks SL5 9RR