

JACOBSEN. UP FRONT IN LIGHTWEIGHT FAIRWAY MOWING.

Introducing the all-new Jacobsen LF-100, the 5-gang designed to increase your lightweight mowing productivity.

The wing mowers are up front for better visibility. So the operator can hold a closer line—even at mowing speeds over 5 mph—to take full advantage of the 100" cutting width. This unique, up-front configuration also gives better access to all mowing units to quickly empty catchers and make mower adjustments easy.

Heavy-duty reels deliver a greens-like cut. New heavy-duty reel construction provides extra strength for long life in demanding fairway conditions. The fully floating, 22-inch steerable 7-blade reels are heavier, to follow ground contours closely, for that smooth, consistent Jacobsen cut that's the envy of the industry.

True lightweight mowing. Newly designed low-profile turf tires produce the lightest ground pressure, and the rear wheels roll on a different track than the front,

so your tender turf thrives with less compaction. And the wide 4-wheel stance offers excellent traction, increased stability and a tight turning radius.

Built to last. The LF-100 has a proven, rugged chassis, a durable and simple hydraulic system and liquid-cooled diesel engine for a longer, trouble-free life on your fairways.

What's more, the entire machine is backed by your Jacobsen distributor, so you're never far from dependable parts and service support.

See all the LF-100 differences. Ask your Jacobsen distributor for a free demonstration. Attractive lease and finance plans available. Or contact:

North Lynn
Industrial Estate
Bergen Way,
King's Lynn
Norfolk PE30 2JG
(0553)763333.

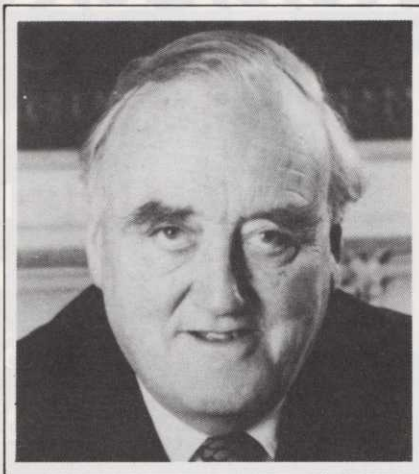
JACOBSEN
TEXTRON

Jacobsen Division of Textron Limited

© Jacobsen Division of Textron Inc. 1988 J-27-8B



CONTENTS



PRESIDENT

The Rt. Hon. Viscount Whitelaw, C.H., M.C.

B.I.G.G.A. BOARD OF MANAGEMENT

Chairman: Paddy McCarron

Vice Chairman: Ivor Scoones

Dennis Archer, John Crawford, Barry Heaney,

Roy Kates, George Malcolm, Jack McMillan,

John Millen, Walter Woods

EXECUTIVE DIRECTOR

Neil Thomas, B.A.

EDUCATION OFFICER

David Golding

GREENKEEPING MANAGEMENT

Publishing Director: Barry Poole

Associate Editor: Mike McClennan

Sales Manager: Bill Lynch

Advertising Sales Executive: Carol Dutton

Tel. 091 496 0003. Fax. 091 496 0004

Typesetting: Metroset, Newcastle

Printing: CWS Ltd, Gateshead

Greenkeeping Management is published monthly by the British & International Golf Greenkeepers Association at Spencer House, Market Lane, Swalwell, Tyne & Wear NE16 3DS. Tel. 091 496 0003. Editorial opinions expressed in the magazine are not necessarily those of B.I.G.G.A. and the Association does not accept responsibility for the advertising content or for the accuracy of product information or descriptions. Manuscripts, artwork and photographs are submitted at the senders risk; please enclose a self-addressed envelope when requesting return of material. Reproduction in whole or in part of any portion of the magazine without written consent of B.I.G.G.A. is prohibited. Single copy named person circulation is by subscription at £21.95 a year (UK only) and £32.25 (Europe/Eire) and by free controlled distribution to B.I.G.G.A. members, golf clubs in the UK and Europe, local authorities, business interests, libraries and Central Government.

Subscriptions, address changes, advertising, manuscripts, news, trade information, photographs and letters for publication should be sent to the above address.

© 1989 by The British and International Golf Greenkeepers Association.

ISSN 0956-4519

Utility Vehicles	8A
Winners	9
Winter Golf	12
Sprayers and Spraying Equipment	20
Bunker Sand	22
Slow Release Fertilisers	29
Wetting Agents	42
The Way Forward	54

DEPARTMENTS

Head Office	5
Education	10
Letters	14
In the Picture	17
Around the Green	34
STRI	38
Movements & Murmurings	45
Product Focus	46



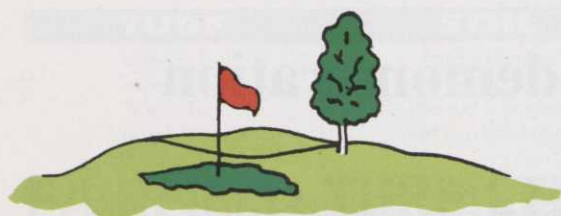
Front Cover: An early winter scene of the Castletown Links on the Isle of Man by Alan Birch - considered apt until the day of deadline for this edition. However, hurricanes in Southern England and snow in the North and Scotland caught everyone unawares - we will report in our March issue.

Greenkeeping Management is the official publication of The British and International Golf Greenkeepers Association, Aldwark Manor, Aldwark, Alne, York YO6 2NF. Tel: 03473 581/2.

GOLF LANDSCAPES LTD.

ASHWELLS ROAD
BENTLEY, BRENTWOOD
ESSEX. CM15 9SR

Telephone: (0277) 73720
Telex: 995215 GOLF LG



*The proven experience in the field
for construction, drainage and irrigation*

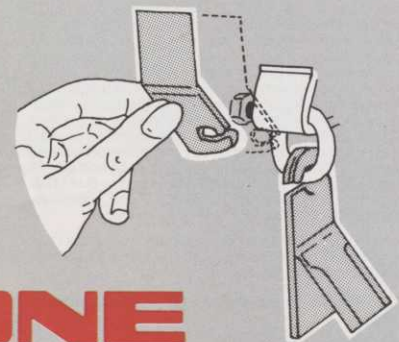
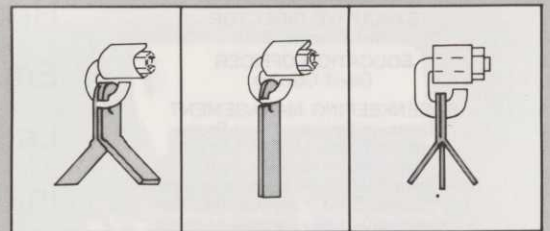
AMAZONE GROUNDKEEPER

The
efficient
way to
keep grass
under
control

From the company where technical advance is a matter of course

Hook on flails are easily attached for completely safe use. No tools are required. Also, scarifying blades can be fitted individually or in combination with the flails.

Amazone Groundkeeper flail mowers (1.20, 1.35, 1.50 and 1.80 metre working widths) will cope with grass of any height and leave a remarkable 'lawn' finish. Generous easy-to-empty collection hopper, quick change reversible flails (no tools), easy height adjustment, safety slip clutch protected drive train. Tough machines for the toughest situations.



AMAZONE GROUNDKEEPER HI TIP MODELS Low level cutting — high level discharge

The Groundkeeper Hi Tip models (1.20, 1.35 and 1.50 metres) enable the disposal of cuttings to lorries and trailers. Hydraulic tipping operation from the tractor seat for safe, effortless working.

Ask for details and a demonstration



Administration Centre
Amazone Ground Care — A division of Amazone Ltd
Rowse, Pillaton, Saltash, Cornwall PL12 6QU. Tel: (0579) 51155. Fax: (0579) 51057.

Sales, Service and Parts Centres

England: Amazone Ground Care, Cuckoo Copse, Lambourn Woodlands, Newbury, Berkshire RG16 7TJ. Tel: (0488) 72872. Fax: (0488) 72698.
Scotland: Amazone Ground Care, Palace Works, Edinburgh Road, Linlithgow, EH49 6QS. Tel: (0506) 845214. Fax: (0506) 848076.

Advanced Ground Care Engineering

FROM HEAD OFFICE



Neil Thomas.

ISEKI DATES

Ireland: 17th May 1990, Forest Little Golf Club.
Scotland: 30th May 1990, Cawder Golf Club.
South-West: 14th June 1990, Yeovil Golf Club.
Northern: 20th June 1990, Branspeth Castle Golf Club
Midlands: 25th June 1990, Kedleston Park Golf Club.
South-East: 4th July 1990, Sudbury Golf Club.
Final: Wednesday September 12th 1990, Moortown Golf Club, Leeds.

NOTICE TO MEMBERS

Annual General Meeting

This will be held on
Tuesday, 13 March, 1990
 at 2.30 p.m. in
The Royal York Hotel
 York

immediately adjacent to the Railway Station
NEIL THOMAS Executive Director

RECOMMENDED MINIMUM SALARY/WAGES SCALE

THE Association has updated its recommended minimum salary/wages scale, although actual figures remain the subject of negotiation between the Golf Club and Greenkeeping staff. The quoted rates apply from 1st January, 1990.

	9 Holes £	18 Holes £	27 Holes £	36 Holes £
Course Manager/Head Greenkeeper	11,762 pa	14,879 pa	16,214 pa	18,144 pa
Deputy Course Manager/Deputy Head Greenkeeper	9,244 pa	10,711 pa	11,672 pa	13,060 pa
First Assistant	177.74 pw	177.74 pw	177.74 pw	177.74 pw
Assistant Greenkeeper	166.72 pw	166.72 pw	166.72 pw	166.72 pw
Apprentice Greenkeeper				
All courses	Age 16/17 Age 18 Age 19	83.36 pw 104.20 pw 125.04 pw	Age 20 Age 21 +	145.88 pw 166.72 pw

N.B. Where appropriate these rates should be increased to reflect Regional variations (eg 24% in some areas).

The First Assistant is a post designed to recognise a third-in-charge where appropriate to the size of the Club. In cases where the First Assistant is the recognised Deputy, the appropriate Deputy Course Manager/Deputy Head Greenkeeper salary scale should apply.

N.B. staff in possession of recognised qualifications should have this reflected in an addition to base salary.

Basic conditions of employment should include:

1. Where accommodation is provided by the Club, it should be rent and rates/poll tax free with heating/lighting costs borne by the Club.
2. Where accommodation is not provided by the Club, a suitable remuneration in addition to the above salary should be paid.
3. 40 hour week.
4. Retirement Pension Scheme.
5. Telephone costs on Club business.
6. Mileage allowance.
7. Time off to attend lectures, demonstrations, BIGGA functions and tournaments.
8. If not salaried, basic overtime to be paid at time and a half, with double time on Sundays and Statutory Holidays.

Membership details are available from: The Executive Director, BIGGA, Aldwark Manor, Alne, York, North Yorkshire YO6 2NF. Telephone: 03473 581/2. Fax: 03473 8864.

MEMBERSHIP

SUBSCRIPTIONS 1990

GREAT BRITAIN AND IRELAND

Course Manager/Head Greenkeeper	£36.00
Deputy Course Manager/Deputy Head Greenkeeper	£33.00
*First Assistant/Assistant Greenkeeper	£31.00
20 Years of Age or Under	£20.00
International - All Greenkeeping staff	£48.00

Associate/Company.....£50.00
 (Includes 1 year's subscription to Greenkeeping Management)
 Corporate - 10 or more....max £500.00
 (Add £20 for each additional member requiring a magazine).

*The First Assistant is a post designed to recognise a Third-in-Charge where appropriate to the size of the club. In cases where the First Assistant is the recognised Deputy, the Deputy Course Manager/Deputy Head Greenkeeper subscription rate should apply.

Fairfield one of the largest turf growers in Europe

with a choice of five grades of quality turf plus a full range of associated products and delivery service second to none, landscaping contracting service available

TURF

Amenity Turf
 Super Sport
 Super Turf
 Superfine Turf
 Pasture Turf

SOIL

As-dug Topsoil
 Screened Loam
 Pre-turf Compost
 Turf Top Dressings

SEED

Landscape mixtures
 Sports Turf mixes
 Wild Flower mixes
 Reclamation mixes

PLUS

Graded Bark and
 Mushroom Compost

FAIRFIELD TURF LTD

Fax: (06794) 734

Fairfield Court, Brookland, Romney Marsh, Kent TN29 9RX. Tel: (06794) 731 (10 lines)

The Best of British Turf



FROM HEAD OFFICE

BIGGA NATIONAL EDUCATION CONFERENCE

ROYAL HOLLOWAY AND BEDFORD NEW COLLEGE
30TH MARCH - 1ST APRIL 1990
ORGANISED IN CONJUNCTION WITH THE INTERNATIONAL GOLFERS CLUB

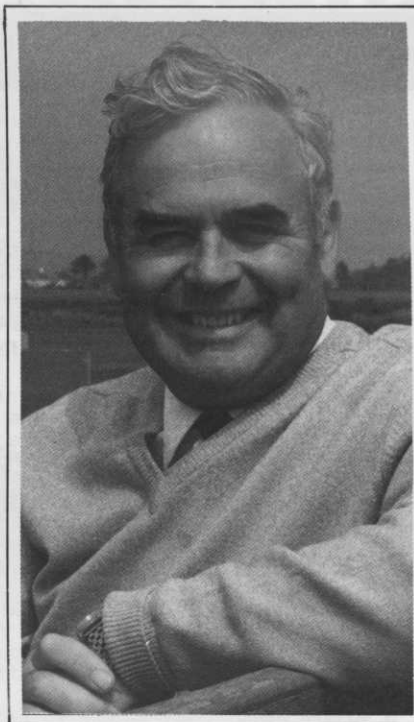
FOLLOWING the success of the inaugural National Education Conference held at Queens' College, Cambridge in April, 1989, the task of selecting a suitable college for the second Conference was not an easy one given the high standards set at Cambridge. However, in selecting the Royal Holloway and Bedford New College, BIGGA considers that the standards set will be maintained and allow all international friends easier travelling via Heathrow Airport.

The College was formed by the merger of two old established Colleges of London University, Bedford and Royal Holloway.

Bedford started life in 1849 in a house in Bedford Square, as a College for the education of women. Royal Holloway was founded by the Victorian philanthropist Thomas Holloway in 1886 also as a women's College. Both Colleges began to accept men in the 1960's and now have almost equal numbers of male and female students.

The College is the only large College of London University to be sited outside the capital. It occupies a 100 acre campus on the summit of Egham Hill, about one mile from the town of Egham. The best known local landmark is Windsor Castle which is four miles from the College (the nearest entrance to Windsor Great Park is about 600 yards from the College gates). Delegates will be resident in the Founders Hall. The building is a striking example of 19th century architecture, inspired by the Chateau de Chambord in the Loire Valley. It was opened by Queen Victoria in 1886.

The education and training of greenkeepers continues to be of paramount importance and this Second Na-



One of the principal speakers at the Conference - John Glover, Rules Secretary, Royal and Ancient Golf Club of St Andrews, Fife.

tional Education Conference marks another stage in the development of BIGGA's ongoing educational programmes. The Association looks forward to welcoming you to the conference feeling sure that you will gain substantially from the experience.

DAILY PROGRAMME

Friday March 30

9.30 a.m. - REGISTRATION in Founders Building
11.45 a.m. - LUNCH - Founders Building

Conference Commences

Chairman: John Millen, Canterbury Golf Club. Member of BIGGA Board of Management and Education

Sub-Committee
1.20 p.m. - Introduction - Ivor Scoones, Vice-Chairman, BIGGA
1.30 p.m. - 'POA ANNUA: MYTHS AND REALITIES' Donald B. White, Professor Turfgrass Science, University of Minnesota
2.10 p.m. - 'GOLF AND GREENKEEPING IN SOUTH-WEST IRELAND' David MacIndoe, Course Manager, Killarney Golf Club
2.50 p.m. - 'ROOM FOR DEVELOPMENT' George Oldham, Chief Architect, Barratt Developments
3.30 p.m. - Coffee
3.50 p.m. - 'THE SWEDISH GOLF FEDERATION AND THE SWEDISH GREENKEEPERS ASSOCIATION IN A PROSPEROUS CO-OPERATION' Lennart Poignant, President of the Green Committee, Swedish Golf Federation. Stig Persson, President of the Swedish Greenkeepers Association.
4.30 p.m. - 'THE EVOLUTION OF PUTTING GREENS FROM SOIL TO SAND' James M. Latham, Jr. United States Golf Association Greens Section
5.10 p.m. - QUESTIONS TO THE PANEL

COMPANIONS PROGRAMME:

Depart by coach from College at 1.30 p.m. to Windsor Castle for tour of Castle and afternoon tea. Return to College by 5.30 p.m.

Saturday March 31

The President of BIGGA, The Rt. Hon. Viscount Whitelaw, C.H., M.C. will be joining delegates during the luncheon period.

9.00 a.m. - 'MANAGING A SURREY CLUB' Ian McMillan, Course Manager, Hankley Common Golf Club

9.40 a.m. - 'MANAGING A SURREY CLUB' continued John Harris of the Green Committee, Hankley Common Golf Club

10.20 a.m. - 'THE GOLF COURSE IN HARMONY WITH NATURE' J. Dudok Van Heel, Golf Course Architect, Belgium

11.00 a.m. - Coffee



THE SS100 . . . FIRST ON THE GREEN

IT GRADES...IT SHREDS...IT BLENDS...

Now, from GRADEALL comes a new concept in greenkeeping. A unique combination of blending, shredding and grading in a single unit that gives you:

- MAXIMUM MOBILITY
- HIGH PERFORMANCE RELIABILITY
- MAXIMUM TONNAGE OF QUALITY TOP DRESSING
- MINIMUM EFFORT



GradeAll International Ltd.
9 Farlough Road, Dungannon,
Co. Tyrone, Northern Ireland.
Tel. (08687) 40484
Fax. (08687) 48823

The SS100 performs aggressively on even the poorest quality damp soil with stones, shrubs and sods producing high quality loose and manageable soil. In fact, the SS100 turns tough, lumpy organic humus into pure, workable compost.

From cricket tables, to bowling greens, to golf greens and fairways...indeed any turf area... you'll benefit from the SS100's unique capabilities.

CALL US ...
if you want to make the GRADE!

FROM HEAD OFFICE

11.20 a.m. - 'COMPARITIVE MANAGEMENT PRACTICES: APPRECIATING DIFFERENT APPROACHES' Gerald Faubel, President, Golf Course Superintendents Association of America

11.50 a.m. - 'THE GREENKEEPER AND THE RULES OF GOLF' John Glover, Rules Secretary, Royal & Ancient Golf Club of St. Andrews

12.30 p.m. - QUESTIONS TO THE PANEL

12.50 p.m. - Lunch

2.00 p.m. - 'INTERNATIONAL GOLFERS CLUB PRESENTATION' Christopher Williams, International Golfers Club

3.00 p.m. - 'WHY THIS YEARS PROGRAMMES DETERMINE NEXT YEAR'S QUALITY' Donald B. White, Professor Turfgrass Science, University of Minnesota

3.40 p.m. - Coffee

4.00 p.m. - 'GOLF BEFORE THE GREENKEEPER' David Hamilton, Surgeon and Historian

4.40 p.m. - 'COMMON PROBLEMS FACING THE AGRONOMISTS' Jeff Parris, Sports Turf Research Institute

5.20 p.m. - QUESTIONS TO THE PANEL

COMPANIONS PROGRAMME:

Depart by Coach from College at 9.00 a.m. for guided tour of London

including Victoria and Albert Museum, Hyde Park, Buckingham Palace, Parliament Square, Westminster Abbey, Theatreland, Fleet Street, St. Paul's Cathedral, Tower of London, Stock Exchange and Bank of England. Shopping at Leisure. Pick-up at 4.00 p.m. for return to College.

Sunday April 1

9.15 a.m. - 'GREENKEEPING AND OUR HARSH CLIMATE' Sydney Arrowsmith, Course Manager, Royal Portrush Golf Club

9.55 a.m. - 'IRRIGATION STANDARDS AND THE GREENKEEPER' Robin Hume, British Turf Irrigation Association

10.35 a.m. - Coffee

10.55 a.m. - 'GREENKEEPING IN THE DESERT' Barry Carter, Greens Superintendent, Emirates Golf Club

11.35 a.m. - 'CHANGING GOLF IN BELGIUM' David Singleton, Course Manager, Belgium

12.15 p.m. - 'BRITAIN — MID-AMERICAN CLIMATES — DO OUR MAINTENANCE PRACTICES COMPARE?' James M. Latham, Jr. United States Golf Association Greens Section

12.55 p.m. - QUESTIONS TO THE PANEL

1.20 p.m. - SUMMING UP

Paddy McCarron, Chairman, BIGGA

1.30 p.m. - Lunch

COMPANIONS PROGRAMME:

Depart by coach from College at 8.30 a.m. to Petticoat Lane market. Return at 12.00.

BIGGA wishes to thank IGC for its generous support enabling us to present the Second National Education Conference.

IGC and BIGGA are currently working together on various projects aiming to improve the standards of greenkeeping through education at all levels and so enhance the game of golf.

IGC provides a totally new concept in European Golf Course Management, incorporating a highly sophisticated computer system. Improved efficiency and profitability is guaranteed but equally important, their complete range of ancillary services means that your club can progress confidently into the next decade. Their literature will be available for conference delegates and there will also be a presentation of the system by IGC. Again, we would wish to thank IGC for their support of this conference and all the other areas of assistance they are providing to BIGGA and European greenkeeping overall.

● For full programme and application form please contact the Executive Director, BIGGA, Aldwark Manor, Aldwark, Alne, York, North Yorkshire, YO6 2NF. Telephone: 03473 581/2. Fax: 03473 8864.

COMPACTION, THATCH OR DRAINAGE PROBLEMS?

For really fast hollow tining of your problem areas, with variable tining and coring, get Coremaster on your side and cut disruption to a minimum.

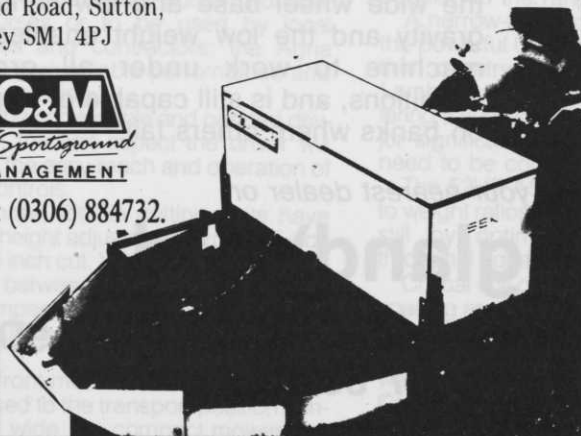
C. & M. Sportsground Management, can core up to 18 Greens in a day, or a Bowling Green in 3 hours - fast specialist equipment - at economical rates.

GET C & M COREMASTER HIRE WORKING FOR YOU

Contact the Turf Aeration Specialists C & M Coremaster Hire.
4 Lind Road, Sutton,
Surrey SM1 4PJ



TEL: (0306) 884732.



AITKENS

for

FERTILISERS, GRASS SEED, HERBICIDES AND FUNGICIDES

Golf Course Equipment

NOW SERVING THE NORTH EAST OF ENGLAND

With new premises at:

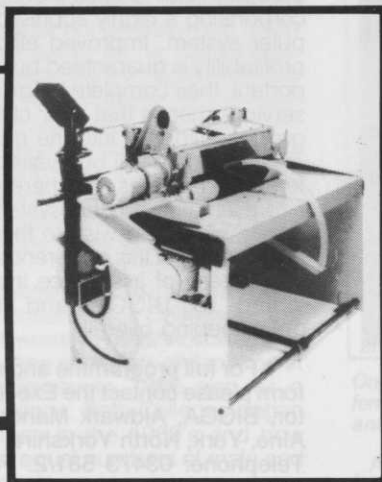
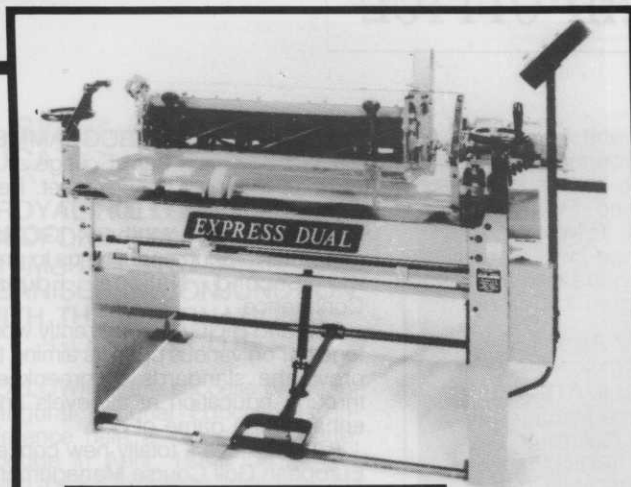
AITKEN'S SPORTSTURF LTD.

Unit 3a, Mill Lane, Tadcaster,
North Yorkshire LS24 8EU
Telephone 0937 834 746

also at

RICHARD AITKENS (SEEDMAN) LTD.

123 Harmony Row,
Glasgow G51 3NB
Telephone 041 440 0033



**LOW COST user-friendly
FINANCE PACKAGES
now available**

WHICHEVER WAY YOU LOOK AT IT... ...THE EXPRESS DUAL A CUT ABOVE THE REST

With over 100 years experience we combine all the traditional skills of cylinder grinding with the advanced technology of the Express Dual.

A precise and beautifully made grinder that particularly complements the TORO range to provide the practical solution for keeping those cylinders sharp and the greens as you want them — innovation, a commitment to excellence and at an economic cost — the Express Dual — a real cut above the rest.

As well as our market leader, we also manufacture a complete range of bottom blade grinders including The Anglemaster which is ideally suited to work alongside The Express Dual — send for our brochure for all the facts.



ATTERTON & ELLIS LTD

Iron Works, Haverhill, Suffolk CB9 8QH
Tel: 0440 702312 Fax: 0440 712138

MANUFACTURERS OF FINE CYLINDER GRINDERS FOR OVER 100 YEARS

AEBI TERRATRACS THE ULTIMATE GROUND CARE MACHINE



The AEBI Terratracs are extremely versatile implement carriers with three point linkage and PTO at the front and rear of the machine. Therefore the AEBI terratracs can be equipped with a whole variety of grasscutting and landscaping implements.

The AEBI's are fitted with low ground pressure tyres and this in combination with the wide wheel base and low centre of gravity and the low weight enables the machine to work under all ground conditions, and is still capable of working on banks where others fail.

For further details please contact your nearest dealer or

Inter-Drain (England) Ltd

Holland Hill, Low Road, North Wheatley, Retford, Notts DN22 9DS
Tel. (0427) 880000. Fax. 0427 881024

UTILITY VEHICLES

AEBI TERRATRACS

AEBI Terratracs were introduced in Britain four years ago. There are a lot of machines working in City Councils, Metropolitan Borough Councils, Water Authorities, Internal Drainage Boards and for private contractors.

1. With the low ground pressure tyres, the machine will work on any soil conditions and in any weather conditions, without leaving any marks.

2. Standard four wheel drive, again to reduce damage of turf and increase pulling power.

3. With the low centre of gravity and wide wheel base, the machine is capable of work on steep banks, where ordinary tractors fail.

4. With the standard three point linkage and PTO at the front and rear this tractor is very versatile with various grasscutting implements at the front, and landscaping equipment at the rear.

5. The build quality is of a high standard and therefore the machine is very reliable.

There are three models in the AEBI range:

TT88. With hydraulic drive its ideal applications are endless as infinite ground speeds may be selected at any engine RPM. (Engine Mercedes 60hp).

TT80. A newly developed machine based on the successful TT77, with 8 gears forward and reverse and the option of an additional four crawler gears.

TT33. The smallest machine in the range, light weight, ideal for grass cutting and other light work, superb on banks. (engine Kubota 30hp).

THE NEW 9000 - A COMPACT RIDE-ON FROM AGRIA

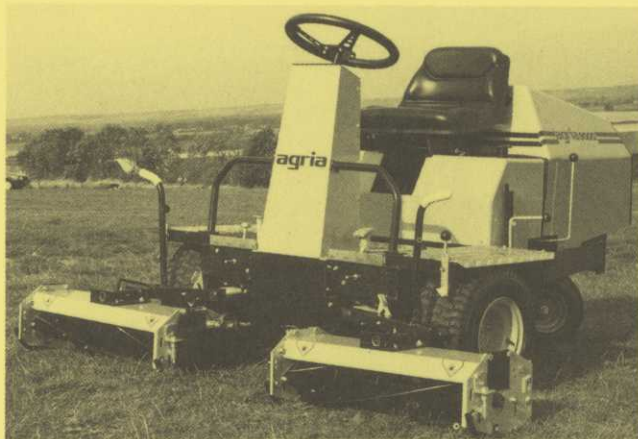
NEW to the comprehensive range of Agria grass mowers is the Agria 9000. A triple cylinder ride-on mower with an overall working width of 6ft (1.95m). Environmentally friendly, the unit is powered by a twin cylinder Briggs & Stratton petrol engine, which incorporates a catalytic converter and runs on lead-free petrol.

Designed to cover the broad spectrum of mowing needs, whether it is amenity and grass land areas, sports grounds, golf courses or to be used by local authorities and contractors; the Agria 9000 will give reliable performance and superior mowing.

From the comfortable and padded driving seat, the first aspect the driver will notice is the easy reach and operation of all the controls.

The three, 2ft 2in cutting units have variable height adjustments, from 0.5 inch to a 1.65 inch cut. With the central mower situated between the front wheels there is no compaction of the grass before cutting, ensuring a clean accurate cut every time.

Each front mower assembly can easily be raised to the transport position. Only 4ft 4in wide, the compact mower can



The new Agria 9000 triple cylinder ride on mower.

be driven through the narrowest of openings and gateways or easily transported from site to site.

With the ability to turn in its own length and a dual range hydrostatic transmission, which allows operating speeds of 10km/h and 6km/h in transport and work ranges respectively, the Agria 9000 is a truly versatile machine.

Differential locking increases the traction, providing good stability and handling on almost any slope or terrain.

Operator safety has always been a primary concern at Agria, this is ably demonstrated in the motor cut-out switch upon lifting the two front cutters, or the reverse blade formation of the left-hand mower which throws cuttings and debris away from the driver.

By raising the light, fibre-glass engine cowl, easy access is gained for any maintenance checks. Everything is clearly and well positioned. An excellent back up service includes a 36 hour warranty, whereby if a fault should occur and a part is not replaced within 36 hours, a replacement machine is provided from the extensive network of service agents.

NARROW TRACK ARTICULATED TRACTOR - COMFORTABLE PERFORMANCE

PERFORMANCE and attention to the needs of the operator - the bases upon which Holder has gained an enviable reputation for its articulated tractors - are both reflected in a more recent addition to the range.

A narrow-track four-wheel drive unit - the powerful Cultitrac A50, is available in this country through sole distributor Lamberhurst Equipment Ltd. of Kent, offering a number of features that are of major significance where space or weight need to be considered.

The 52HP A50, offers excellent power to weight ratios which is enhanced further still by optimum weight distribution through 4 equal size wheels.

Critical soil conditions and narrow row spacing are easily accommodated by this unit making it ideal for use in, for example, orchards and vineyards. Eight forward, four reverse and an optional 'Super Creep' gear, which restricts progress to some 600 m/hr at maximum engine

speed, endorse the versatility of the Cultitrac A50.

This flexibility is enhanced by the variety of implements that can be attached and powered through either the front or rear PTO shafts. Sprayers, a rotary hoe, mowers and foliage cutters, loaders, cultivators and spreaders are all available within the range.

Importantly, the needs of the driver have not escaped the attention of Holder, despite the emphasis that has been placed on the performance requirements of the Cultitrac models. The company points out that, with the 40 litre fuel tank sufficient for 8 hours continuous operation, comfort and convenience of use are of paramount importance in the cab.

If space and excellent all-round visibility are perhaps the watchwords of the cab design, then convenience is the maxim within. All levers are positioned within easy reach of the driving position, while the instrumentation itself is fully illuminated.

SUPER SWEEP FROM AGAR

AGAR say their new all-purpose sweeper, which they have named the "Super Sweep" is "the result of recent developments in the trade, plus a certain amount of persuasion from customers".

Available in five widths, 4', 5', 6', 7' and 8', it is constructed to the Company's usual high standard of specification.

The brushes are 22" in diameter and there is a choice of polypropylene, polypropylene and wire, or all wire bristles, depending upon the type of surface to be swept.

Standard three-point linkage mounted cat, 1 or 2, the unit is suitable for any tractor of 15hp and over. PTO driven through a right angle gear box and shaft to a chain drive.

There are three sweeping positions, offset 25° left, 25° right, or straight in line. Changes are made swiftly by raising the unit on the hydraulics and changing the fixing pin position. Nylon bearings to the pivot make this a smooth operation.

Prices range from £1275 to £1750, all machines are carriage paid on the UK mainland. Full demonstrations are willingly conducted.

STOP PRESS

R & A RENEW SUPPORT

In his opening speech at Harrogate which is summarised below, Mr Michael Bonallack, Secretary of the R & A Golf Club of St Andrews, confirmed that the R & A had decided to continue its support for a further 3 years. While no figures were mentioned, it is understood that this will be substantial.

"I have a dual role here today. The first is to officially open the second European Turf Management Exhibition and the second is to join with the Nature Conservancy Council in launching their new publication "On Course Conservation" - the R & A views both events to be of significant importance to all golfers.

It is just over four years since the R & A agreed to give financial assistance to the formation of a reorganised Greenkeepers Association to be known as the British and International Golf Greenkeepers Association and so pleased are we with the progress and success of the Association, that the committee has decided to continue its support for a further three years.

What progress has been made under the leadership of Neil Thomas?

The membership now stands at 3,500 with over a thousand new members joining in 1989 alone. David Golding has developed a first class educational programme and of utmost importance in this particular sphere is the introduction of the Master Greenkeeper Certificate Award which will be proof and recognition of the highest standards of education.

These educational programmes are having a considerable impact - not only within the greenkeeping profession but also in gaining positive recognition from the home unions and their affiliated golf clubs.

The official publication of the Association, "Greenkeeping Management", has quickly become recognised as the leading magazine dealing with greenkeeping matters with subscription sales exceeding 4,000 copies a month.

Golf greenkeepers now have an active and thriving association of which they can be justifiably proud.

The 2nd European Turf



"Golf Greenkeepers have an active and thriving association of which they can justifiably proud."

Management Exhibition was originally sponsored by BIGGA but from now on it is to be organised and managed by them as well. This exhibition and the accompanying seminars are a happy coming together of the greenkeeping profession with industry associated with turf management and on show is a comprehensive range of products and services which indicate the tremendous growth of interest in this field and the ever increasing new developments taking place. For those with the responsibility for managing golf courses there can be no better forum for updating their knowledge and discussing common areas of interest.

It is only right and proper that those concerned with course management and indeed those also concerned with creating new golfing facilities should have foremost in their minds the conservation of wildlife.

As Walter Hagen once said: "Never worry, to never hurry and be sure to have the time to smell the flowers along the way."

Golf started probably sometime in the 15th Century as a game which developed from natural surroundings. Even the holes were probably old rabbit holes and the clubs, Shepherd Crooks, - the balls either sheeps dung or stones. Now of course golf courses are constructed and involve major

works - and it is thus even more important that designers and constructors take the greatest possible care that their work is sensitive to the needs of the environment and to the wildlife that exists on these sites. The same concern must also be shown by greenkeepers and green committee chairmen who have the responsibility of maintaining both old and new courses.

The R & A is very aware of this and I can tell you that at least two of the Open Championship courses contain sites of special scientific interest and great care is taken at the time of an open to ensure their protection. — We were therefore delighted to be given the opportunity of making an even more positive contribution to nature conservation when approached by the Nature Conservancy Council, represented here to-day by Ian Dair and Mike Schofield, asking us to sponsor the publication of a booklet on "On Course Conservation" — A Guide To Managing Golf's Natural Heritage."

The message it contains is fully endorsed by the R & A — "Is our course being managed with wildlife in mind?" — and this is not just aimed at those courses which do have designated SSSI's but at every single course in the country.

In these times when so many species of plants and animals are endangered by so called

progress it is good to think that golf has a tremendous opportunity to reverse this trend and I heartily commend to you this book, not only for the effect it will have in conserving wildlife — but because its suggestions will make golf courses more interesting, and the game more enjoyable.

STOP PRESS

H & R Fell and Sons Ltd of Barton-on-Humber, South Humberside, known as Lindum Turf, confirmed at ETME 2, their intention to provide substantial financial sponsorship for the Association's new Greenkeeping Yearbook. To be launched at this year's Open Championship at St Andrews the yearbook will be the only officially published record of its kind in Europe. In announcing their decision, Steven Fell, said: "We take delight in making this move. 1990 has already proved to be an exciting year for us with the announcement of our successful tender for the supply of turf to the 1991 National Garden Festival, the introduction of our unique polymer coated seeds and the opportunity to support a progressive association such as BIGGA.

STOP PRESS

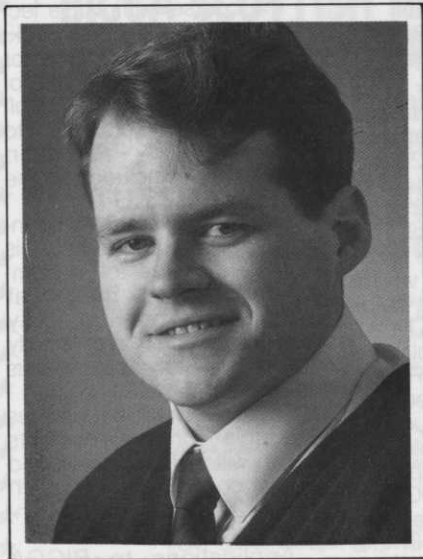
Debbie Savage, BIGGA's Administration Officer, has confirmed that the official attendance figures for ETME was 4062 which represents more than double the 1989 figure. Debbie commented "We were delighted with this result despite the inclement weather. The trade have generally expressed complete satisfaction with the exhibition with many exhibitors already confirming that they will support the 1991 show".

STOP PRESS

Greenkeeping Management's Publicity Director, Barry Poole, has also confirmed that applications for membership continue at a very high level. He said at the show: "We were always confident that the service, the education programme and the magazine would have a positive effect on recruitment. Little did we realise how positive! In addition to over 1100 new members joining during 1989, with the vast majority of these in the last 26 weeks of the year, new applications during January have been averaging about 40 to 50 per week".

More about ETME 2 and the 1991 Show next month.

WINNERS



Julian Copping

APPOINTED Ransomes Grass Machinery Sales Representative for the Eastern Counties and East Midlands, **Julian Copping** who had been a leading light in the company's demonstration team for the past three years. In addition to Britain he had been on demonstration tours in other European countries.

Educated at the Copleston High School in Ipswich, Julian Copping served his apprenticeship with Ransomes when he attended the Suffolk College where he gained his BTEC in Mechanical and Production Engineering.

Upon completing his apprenticeship 26 year old Julian, who lives in Ipswich, was on the grass machinery assembly line prior to joining the demonstration team.

A keen photographer, Julian also enjoys tinkering with old vehicles. He has a 1974 Triumph Stag, and Ransomes' old fire engine, a Commer made in 1952, which are looked after with loving care. He plays badminton and has recently taken up golf.

POWER FOR THE PEOPLE DEALER AWARDS PRESENTED

GBRYAN Jones Ltd of Bishops Castle, Shropshire has won the British Isles "Best Dealer" award in the national Sachs-Dolmar "Power for the People" competition that has been running since it was launched in July 1989.

Bryan Jones, Managing Director of the winning company, with his son, Sales Manager **Gerald Jones** and Secretary **Wendy Oakley** - who had both contributed to the success - attended at the Sachs-Dolmar (UK) Dealers Open Day at Manchester in December 1989 where they were presented with the first prize by

Managing Director **Bob Pickup**. The prize was a Pentax Video Camera complete with all accessories.

First prize was awarded to G Bryan Jones Ltd for a comprehensive programme of advertising, showroom displays, mailshots, point of sale displays, open evenings and promotional events that best used the Sachs-Dolmar theme "Power for the People". This publicity activity has significantly increased sales for the company which will now represent the UK in Sachs-Dolmar's world-wide "Power for the People" Competition where the prize is £1,500 worth of Thomas Cook travel vouchers.

Second prize in the British competition, a Pioneer Hi Fi Stack System went to Weymouth Hire and Garden Machinery, and the third prize of a portable colour television set went to R R Rouse of Norfolk. Both dealers had used the whole range of publicity methods to promote "Power for the People" again with positive results in sales.

G Bryan Jones Ltd has been in business as Agricultural and Horticultural Engineers since 1972 moving from Lydbury North in 1980 to larger premises in Bishops Castle. They hold franchises for a number of major tractor, machinery and plant manufacturers in addition to Sachs-Dolmar (UK), for whom they have been main dealers since 1974.

ADJUDGED to be the 'Best Apprentice of the Year' by the Institute of Engineers and Technicians, Apprentice Technician Engineer, **Simon Baddeley** with grass machinery manufacturers Ransomes Sims & Jefferies of Ipswich. He is pictured (left) with the Company's Personnel Director, **Roger Smith**, after being presented with the prestigious 'Tipping Medal' at the Institute's Annual Dinner held in the London Hilton.

Simon, who lives in Crowfield near Ipswich, created an immediate impression when, at the mock interview while still at school, the Company's Personnel Officer knew he was a young man the company would like to have.

Following a year in the Company's Training School Simon was given the task of improving the design and performance of a trolley used to carry ladles of molten metal.

By this time he had made up his mind he wanted to read Engineering at University and to give him further experience he was given the opportunity to spend time in Engineering Design, Test and Development Departments. Such was his thoroughness while in the Test Dept. he is reputed to have given the Design Engineers unexpected headaches.

As a result of his exceptional academic results at the Suffolk College in Ipswich and his outstanding all round ability, Ransomes had no hesitation in sponsoring him to read Mechanical Engineering at Brunel University where he is in his first year.



(Left to right) Simon Baddeley and Roger Smith

EDUCATION



The first intake at the College are pictured with from centre left to right: Course Organiser Graham Wright, the Secretary of the Welsh Golf Union, Danny Loe and the North Wales representative of the Union Bert Griffiths.

A golf greenkeeping course - City and Guilds, Phase 1, Greenkeeping and Sportsturf Management has started at the Welsh College of Horticulture, Northhap, Mold, Clwyd. It is the culmination of two years discussion between the Welsh Golf Union, the College and the British and International Golf Greenkeepers Association.

This means Wales now has its own designated college. The Welsh Golf Union sponsors its member clubs to support greenkeeper training in Wales to attend courses at the College.

The response of the first course has been very encouraging with 25 greenkeepers registering, drawn from 17 golf clubs throughout the whole of Wales. The clubs, supporting the course include five of the six

premier clubs on the Welsh competition circuit - Ashburnham, Royal Porthcawl, Royal St. David's Harlech, Prestatyn and Royal Caernarfonshire (Conwy).

A key feature of the course is the close liaison with bodies associated with golf. Regular meetings are arranged to discuss the quality, content and any other matter associated with greenkeeper training within the principality, thus helping to provide a course that the governing body and the Greenkeeper Association requires for its greenkeepers in Wales.

This course is the beginning of a new era of training provision within Wales, and is set to create a higher standard of golf course management which should improve player performance at club and international level.

CONSTRUCTION COURSE SPONSORED BY ROLAWN LTD

ALDWARD Manor, York will be the venue for our first in-house construction course on March 28 and 29 entitled "The Use of Cultivated Turf in the Construction of Tees and Greens".

The course has been sponsored by Rolawn Ltd, whose offices and production fields are close to the BIGGA Headquarters near York. Rolawn's Marketing Director, Rachel Semlyen says of their sponsorship to BIGGA's Education Programme, "We are pleased to have been asked to sponsor this course as part of BIGGA's programme to improve standards and training. In the cultivated turf industry there have been many changes and developments that make construction and renovation more feasible for more greenkeepers, but only if they have knowledge and training".

The course will involve lectures by Robert Laycock, Rolawn's Technical Director and Brian D. Pierson, one of the country's leading Golf Course Constructors. A visit to Rolawn's Turf Production Fields is also included in the course.

Because of Rolawn's sponsorship we are able to offer this course inclusive of accommodation and meals at Aldward Manor for only £30.00. Places are strictly limited and early application is advisable.

There are twenty-four places available for non-residents which will include Lunch and Dinner on the 28th and Lunch on the 29th. The cost for non-residents will be £10.00.

Applications to BIGGA Headquarters, enclosing the correct remittance.

• The course delegates will receive 3 Master Greenkeeper Certification Credits.

CREDIT FOR PREVIOUS GREENKEEPING LEARNING

ELMWOOD College, Cupar, is to pilot new work to be done in enabling those who have been in the Greenkeeping Industry for a number of years to achieve a vocational qualification. Credit will be given for relevant work experience, proficiency tests, short courses and previous further education qualifications in the achievement of SCOTVEC Modules.

This new initiative is tailor made for the time-served greenkeeper who has never managed to obtain a qualification.

George Baird, who is Head of Agriculture at Elmwood College, is to co-ordinate the development of this new project, calling on the expertise of specialist college greenkeeping staff.

The new project has the objective of devising a system of accreditation of prior learning for application to greenkeeping. The development work was started in December and will run until June 1991. During this time methods of counselling and assessment will be devised to ensure that those eligible can get credit for their knowledge and skills at any level in the Industry. The

special unit at Elmwood College will be open for business early in the new years. George Baird and his colleagues can be contacted on 0334 52781.

A final word from George Baird: "There will soon be no need for anyone to say that they have no qualifications! Anyone with industrial experience will be able to get credit for it, and then they can build on what they have with further education and training. They can get this by short courses, day or block release, full-time course or even distance learning, by which they can study at home and only go to the college for top-up instruction and assessment."

CAN YOU HELP?

DAVID Blonski of the Dunkerque Horticultural College, France is looking to place pairs of greenkeeping students on British courses during the period 16 April to 11 May 1990.

If any members are willing to assist in the these placements please write direct to David at the following address: Mr D. Blonski, LEPA Horticole de Dunkerque, 1972 Rue de Lefrinckoucke BP34, 59948 Dunkerque, Cedex 2.

Warwickshire College of Agriculture



offer the following specialist courses in
GREENKEEPING

Day-Release over four years leading to CITY AND GUILDS OF LONDON INSTITUTE GOLF GREENKEEPING qualifications.
ADVANCED NATIONAL CERTIFICATE IN GREENKEEPING
(One full year, or over two winter periods)

For further information please contact:

Roy Nelson, Warwickshire College of Agriculture,
Moreton Morrell, Warwick CV35 9BL. Tel: 0926 651367