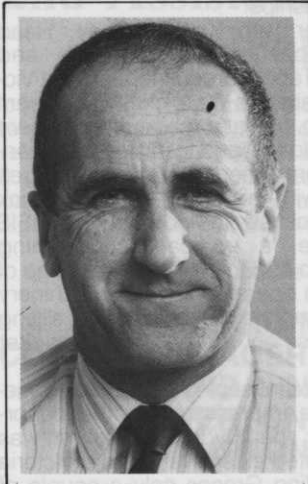


# MOVEMENTS AND MURMURINGS

## NEW HUXLEYS APPOINTMENT HIGHLIGHTS MAJOR EMPHASIS ON PRODUCT DEVELOPMENT AND PRODUCTION

**E**DDIE Fox, a member of the Huxleys grass machinery team for 20

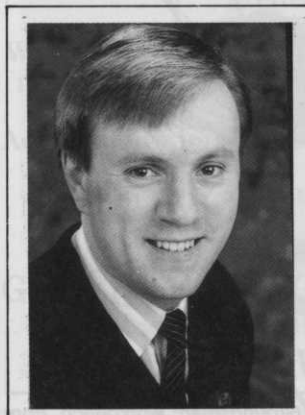


Eddie Fox

## CLAYMORE GRASS MACHINERY NEW APPOINTMENT

**I**AN Rotherham has joined Claymore Grass Machinery as Northern Area Sales Representative. Ian will be responsible for the sales and marketing support to Claymore customers in Northern England up to the Scottish Borders.

Ian, who is 29, was previously general manager with a prominent horticultural machinery retail group and has previous experience as a retail sales representative for professional grass machinery.



Ian Rotherham

years, has been appointed a director of the company. He takes on overall responsibility for the new product development and production departments of the business, which is located at The Dean, New Alresford, Hants.

The appointment reflects the new level of importance acquired by equipment development and manufacture within Huxleys following the company's decision to concentrate its activities on the sales, service and hire of its own Huxley product range.

"Eddie's exceptional talents and experience of both the industry and the company will help ensure that these objectives will be met fully in coming years," commented Mr Edward Huxley, the founder of the business. "He has made an immense contribution to the past development of the company, and his appointment as a director reflects the major emphasis now being placed on new product developments and production.

Married with two daughters, Eddie comes from a farming family and trained as an agricultural engineer at Rycotewood after leaving school. He spent some time in the automotive trade prior to joining Huxleys in 1969. His interests include photography, carpentry and golf - when time allows!

## ROGER AT THE HELM

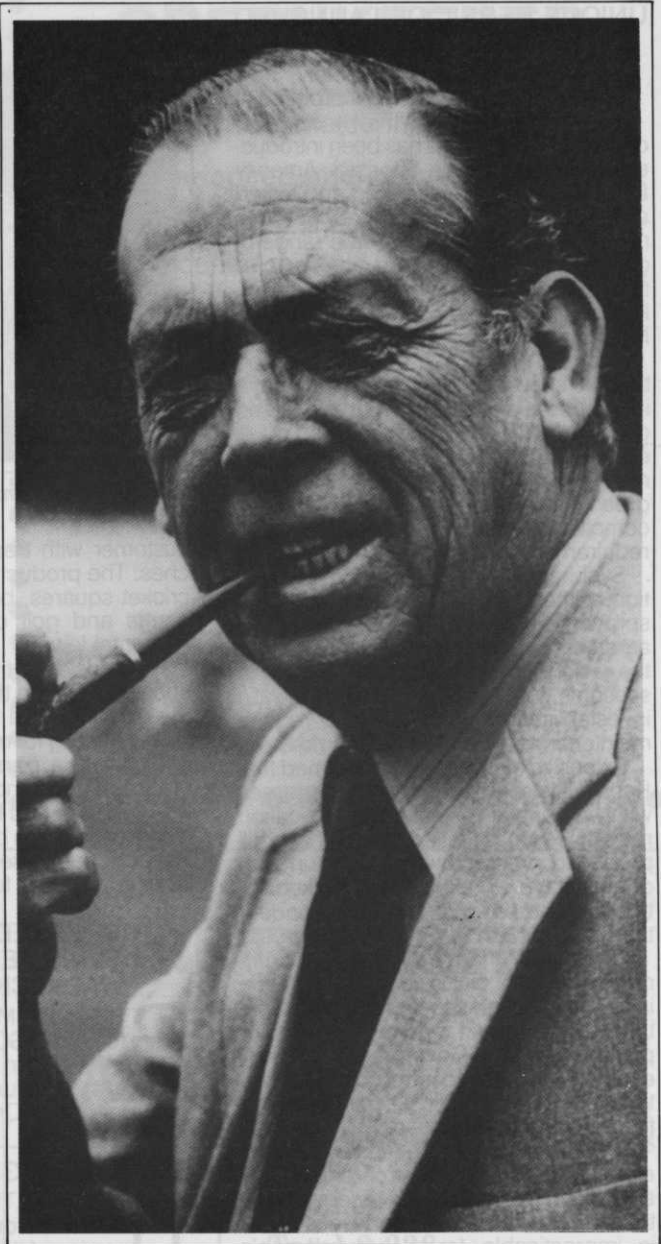
**C**HARTERHOUSE Turf Machinery, the specialist in turf management equipment, has appointed **Roger Newman** as its public relations officer.

Roger, 40, will be familiar to many people in the horticultural world for 19 years he was news editor of Horticulture Week magazine, leaving to work freelance in 1988.

A former council member of the Historic Gardens Trust, he is the author of several books on subjects ranging from the Vikings to English rural life.

Of his new appointment, he said: "I am delighted to join a young, vibrant and enthusiastic team. In the turf management field Charterhouse is already a force to be reckoned with, and I look forward to its continued expansion."

Roger lives in West Sussex and his hobbies include deep sea fishing and gardening.



Peter Dobereiner



Roger Newman

**V**ETERAN golf correspondent, Peter Dobereiner, has retired from The Observer in order to pursue a new career as a golf course designer and consultant. He intends to restrict his writing commitments to books and magazines and to specialise in creating low budget golf courses. Dobereiner's experience in farming and golf has convinced him that economic construction and maintenance charges need not mean a sacrifice in the quality of golfing values. His first course opens next year and he has a number of projects in the planning stages.

Please find further Recruitment ad on page 1