



EURO CAP LTD

"This is our first time at this show and much interest has been shown in our caps and in particular the battery operated golf trolley. A good attendance with a range of attendees."

Clive Helder

While the Education Conference was well under way preparations for BTME and ClubHouse were getting to the frantic stage by Monday afternoon.

It never ceases to amaze how quickly the Harrogate Halls go from being a series of vast empty shells to a home for over 230 colourful, varied and exciting stands.

With a few hours to go you would bet your house it wouldn't be ready in time but with a few minutes to go everyone is ready for a drink and a nibble at the Pre Show party and you're looking forward to life on the streets wondering why you were so daft as to bet the family home on a bet you always lose.

The Education Conference Dinner proved to be a superb occasion and in Jimmy Bright we had a speaker who was obviously towards the front of the queue when new jokes were being issued.

Tuesday saw the opening of the BTME and ClubHouse with the usual buzz that surrounds it each new year. For a change the official opening occurred at the entrance to Hall M rather than Hall A and George Brown proved to be extremely adept with the sheers.

Day Two of the Education Conference saw papers from Dr Kate Entwistle, of the Turf Disease Centre, who posed the question, Will Future Legislation Ban Pest Control? She was appropriately followed by Jeff Carlson CGCS, Superintendent at The Vineyard Golf Club in the States, who spoke on, Managing a Course without Chemicals.

The Conference concluded with papers from renowned golf course architect, Jeremy Pern and Terry Buchen MG CGCS, of Harvard University, who looked into the future of Turf Science and Golf Course Management.

The next three days in the Halls and the Lecture Theatre passed in a blur with a particular highlight for many being the keynote speech given by Alvin Law, a Canadian, who has not let the fact that he was born without arms prevent him playing the piano and drums with great aplomb.

Alvin had a full lecture theatre enthralled with the inspirational story of his life and left the stage to a standing ovation, with everyone even more aware than ever that there is no such word as can't.

The traditional end to the week is the banquet and this year the guests were treated to a performance containing some of the best known songs ever written as Bootleg Abba took to the stage and soon had the dance floor full.

The feedback from the Show – see the testimonials – has subsequently been very good and fully justifies the months of hard work the BIGGA staff have put in to ensuring a successful week.



▲ Jerrard Winter took his workshop through important health and safety issues



▲ The temporary lecture theatre proved to be an ideal venue



▲ Dennis and Adrian Mortram were in charge of the Water and the Golf Course workshop



CHARTERHOUSE TURF MACHINERY LTD

"We are particularly delighted with the response we have had this year at BTME. We have had a good cross section of customers on the stand from greenkeepers, of course, but also contractors, councils and some of the smaller sports grounds. We also managed to take some orders. All in all a good show for us."

Nick Darking

Our reputation has grown over the years.

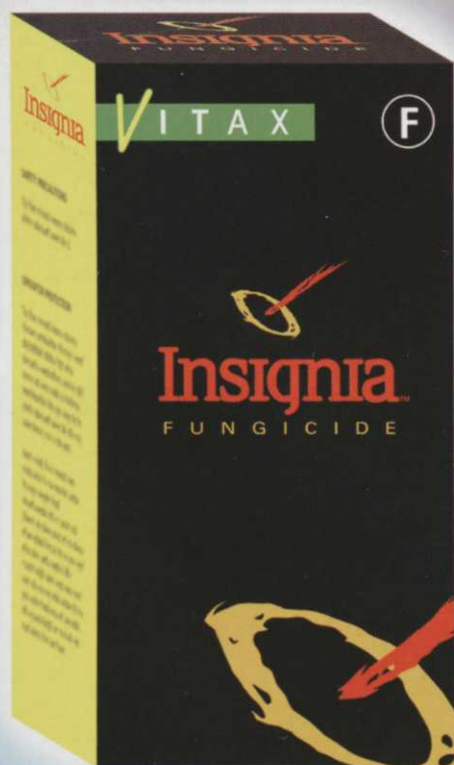
BARENBRUG



Just what has made Barenbrug the best seed under the sun? Well, 100 years of experience for one thing. That's plenty of time to develop the quality and breeding of our own varieties – like Bargold, Barkoel and Barcampia. Cultivars produced after listening to our clients' needs. No wonder we're still growing strong. So, if you want your reputation to grow too, call us on 01359 272000 for our new 2004 centenary seed catalogue.



Barenbrug UK Ltd., 33 Perkins Road, Rougham Industrial Estate, Bury St. Edmunds, Suffolk IP30 9ND Tel: 01359 272000 Fax: 01359 272001 Email: info@baruk.co.uk www.barenbrug.co.uk



The longest lasting Fusarium control ever!

- Latest strobilurin technology sets a new performance benchmark against Fusarium and other key diseases
- Excellent turf grass safety
- Beneficial to sward appearance
- Rainfast in one hour
- Small packs are convenient to use



BASF

Always read the label. Use pesticides safely. Insignia contains pyraclostrobin. Insignia is a registered trademark of BASF.

Vitax Limited Owen Street Coalville Leicestershire LE67 3DE
Telephone: 01530 510060 Facsimile: 01530 510299
E-mail: info@vitax.co.uk Website: www.vitax.co.uk

...together bringing you the best



LOCKER SOLUTIONS LTD

"As first time exhibitors the show was very worthwhile and a number of good leads were obtained. We will certainly be back in 2005."
Carl Foreman

Three More Members of the Master Greenkeeper Club

The group of greenkeepers who have achieved the prestigious Master Greenkeeper Award reached 39 when the latest three to earn the right to put the letters MG after their name were honoured at Harrogate.

Phil Gates, Course Manager at Trentham Golf Club; Norbert Lischka, Course Manager of Hamburg Falkenstein Golf Club, in Germany and Stephen Matuza, Superintendent of the Town of Oyster Bay Golf Club, Long Island, New York State, formed a cosmopolitan group at the presentation of their Master Greenkeeper Blazers and plaques by outgoing BIGGA Chairman, George Brown and BIGGA's first Chairman, Walter Woods BEM on Wednesday, January 21.

Three stages of qualification means candidates have to collect 200 credits for education, training and experience, followed by a detailed assessment of their golf course operation and then a two part written examination.



▲ Norbert Lischka with George Brown and Walter Woods BEM



▲ Stephen Matuza, of Town of Oyster Bay GC with his plaque and jacket



▲ Phil Gates, of Trentham GC, was the only "home grown" Master Greenkeeper this year

Unsung Heroes

Brian Payne, Head Greenkeeper of Burnham Beeches GC, High Wycombe, and Tim Parker, groundsman for the Royal Hospital School, Ipswich, and part time groundsman for Woolpit Cricket Club, Suffolk, have been chosen as Unsung Heroes for 2003.



▲ Brian Payne (left) and Tim Parker (right) celebrate with David and Lynda Green, of Terrain Aeration

Brian Payne, nominated by Burnham Beeches' General Manager Mr T. P. Jackson, was praised by the judges for his tireless hard work over 33 years, always keeping the course in superb condition and instigating many improvements. Although it is widely accepted that Burnham Beeches owes its reputation for excellence during important golfing occasions to Brian's efforts, he has always shunned any form of official recognition.

Mr Jackson, who kept his nomination secret until the judges had made their selection, commented that Brian would be devastated to think praise may be heaped on him.

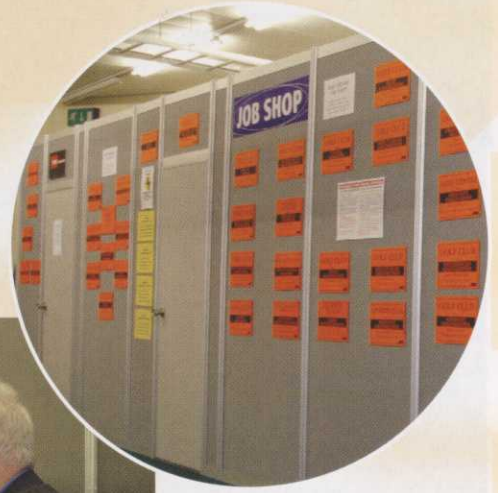
Tim Parker, who holds a full time job as groundsman during the day, was nominated by the Chairman of his village cricket club, Mr E. Walker, for his unpaid after work activities which have made Woolpit's cricket wicket one of the finest in the county.

Tim Lodge, of the STRI, announced the winners during BTME, on behalf of his fellow judges, Gordon Child of BIGGA, and Derek Walder of the IOG, before the Unsung Heroes were presented with the keys to a house in Neffies, South of France, by Lynda Green, of Terrain Aeration, who has mounted the award. Chris Biddle and John Richards, (the award's sponsors), presented a cheque of £150, to each man, towards travelling expenses. The winners will enjoy a week's holiday this year, in the Neffies house.

TURFCARE GROUP

Turfcare Group came to BTME for the second year. The attendance demonstrated the positive state of our industry and Turfcare received a number of genuine enquiries from potential customers nationwide and overseas. The event also provides a wonderful opportunity to meet up with friends and industry associates. The event was organized and managed as professionally as ever."

Roger Jones



▲
◀ The Careers' Fair sponsored by Toro proved to be a big hit with visitors



◀ Former Walker Cup Captain, Peter McEvoy, gave an inspiration account of how he turned his men into winners

TURF STILL RECOVERING FROM LAST YEAR'S DRY SUMMER?



GET IT BACK IN THE SWING



SUITABLE FOR
CoarseTurf

with Multigreen®



Turf
Magic
with



Multigreen® controlled release fertilisers can aid recovery from last year's dry Summer.

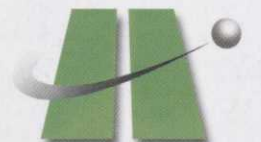
Help turf make a great comeback with temperature controlled feeding that mirrors the requirements of the plant.

Multigreen® 30+5+14 provides a potassium nitrate based 'fast start' portion for response under cool conditions in addition to nutrients released over a minimum 5-6 month period.

Multigreen® 28+3+15+2Mg is a 3-4 month duration fertiliser, also featuring quick response 'fast start' for early season colour.

Ideal for golf tees and fairways, sports pitches and other outfield turf.

Ask about other Multigreen® formulations for fine and close-mown turf.



headland
AMENITY PRODUCTS

Headland Amenity Ltd 1010 Cambourne Business Park, Cambourne, Cambridgeshire CB3 6DP Tel: 01223 597834 E-mail: info@headlandamenity.com www.headlandamenity.com



JAYMAC SECURITY PRODUCTS LTD

"This is our second year at ClubHouse and the show has proved as successful as last year. As experts in providing security access systems to golf clubs throughout the UK the show gives us the opportunity to meet golf club secretaries face to face and demonstrate our company products which is not usually possible when visiting the clubs. I shall be booking for 2005!"
John McCleans



▲ Austin Sutton, of Syngenta, and Matt Reed, of Scotts, present Geoff Henderson and Ian Shepherd, of Kenwick Park GC with the BIGGA Golf Environment Trophy, watched by George Brown and Bob Taylor, Senior Ecologist with the STRI

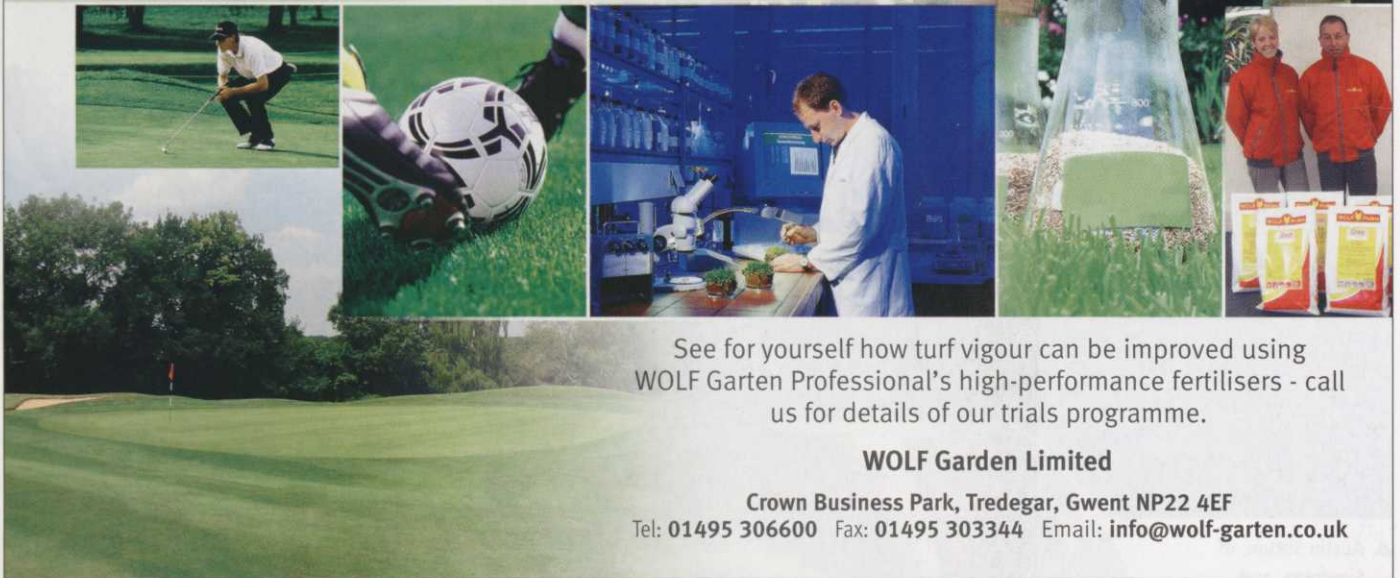


▲ As they stand at the moment clockwise from the top right they are. Prize winners in the BIGGA Environment Competition receive their awards. Thorpeness GC (South East winner); York GC, (North); Minchinhampton GC (Best Newcomer); St Andrews Links (Scotland); Notts GC (Special Project Award and runner-up in the Midlands/SW). Kenwick Park were the overall winner - see education page.



PROFESSIONAL

After a year of successful trials, WOLF Garten continues to prove itself as a supplier of high quality specialist controlled release fertilisers.



See for yourself how turf vigour can be improved using WOLF Garten Professional's high-performance fertilisers - call us for details of our trials programme.

WOLF Garten Limited

Crown Business Park, Tredegar, Gwent NP22 4EF

Tel: 01495 306600 Fax: 01495 303344 Email: info@wolf-garten.co.uk

SIDEWINDER-400V

NEW!!



MAJOR 

3.5m cutting width

Shearbolt &
Overrun clutch PTO

Cutting decks follow
ground contours
independently

Swivel Hitch

Highway spec lighting

26x12-10 ply turf tyres

12 - 90mm cutting height

Power requirement 40 hp

MAJOR EQUIPMENT LTD

Tel.: 01524 850 501

Fax.: 01524 850 502

e-mail: ukinfo@major-grasscare.com

web: www.major-grasscare.com



AMENITY TECHNOLOGY

"Great show, lots of business. Busiest show ever."

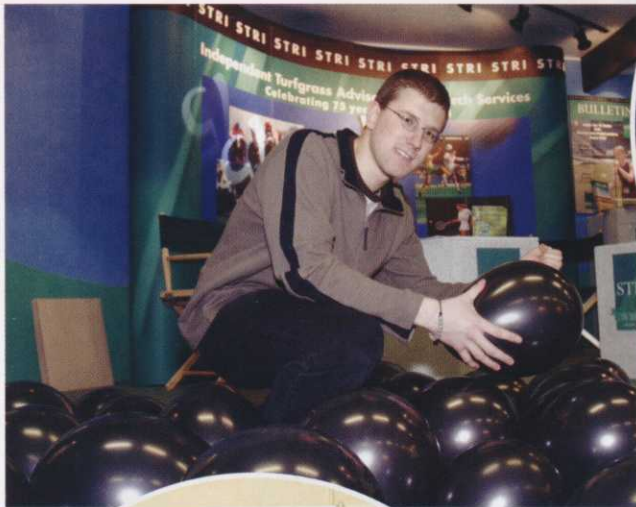
Carl Crome



▲ George Brown with BIGGA Golden and Silver Key supporters after the annual Chairman's Lunch in the Majestic Hotel



▲ BIGGA's Museum is always a big hit, particularly with the older visitors



▲ George Brown welcomes the new Chairman Andy Campbell after the Annual General Meeting

▲ The STRI celebrated the start of their 75th anniversary with a series of events on the Thursday including a balloon burst with the chance of winning one a several prizes



MOX UK

"Sales gone very well. We picked up some good leads and people have been enthusiastic about the new products"

Chris Glover



▲ Andy Campbell draws out the winning scorecard in BIGGA's 18-Hole Competition assisted by John Pemberton, Acting Executive Director of BIGGA. The winner was Jean-Paul Bowers, of De Vere Belton Woods



▲ The Bernhard's Delegation were presented with their tickets to San Diego by Stephen Bernhard at a cocktail party on the Wednesday evening



BATGOLF.COM

"BATgolf has had tremendous success with all the visitors from the UK and overseas. We will need to have at least double stand space for next year to accommodate everyone."

Andrew Cornes



▲ Bootleg ABBA were a great way to finish the week at the banquet on the Thursday night

Jimmy Bright had the National Education Conference Dinner in stitches on the Monday evening ▶



DELTA T DEVICES LTD

"Our first experience of this type of trade show – very pleased with the response to the products. A wide spectrum of delegates with an interest in our range of products. Hopefully we will see the level of interest result in sales."

Derek Fogg



▶ David Hart, of John Deere, who, through the John Deere Team Championship, sponsor the National Education Conference welcomed the delegates at the Dinner



MCCORMICK TRACTORS

"Excellent event this year. Numerous enquiries from both potential customers and dealers."
Adrian Winnett

0800 328 8276

The secret to great sportsturf is a number...

Call the **Grade A Direct** FREEPHONE hotline and secure first class technical advice and market-leading turfgrass cultivars, directly from the UK's largest amenity seed producer.



LINCOLN Tel: 01522 868714 BRISTOL Tel: 0117 982 3691

NEW PRODUCTS

JCB TEAM UP WITH COUNTAX

JCB Groundcare teamed up with Countax to show a lawn and garden tractor with unrivalled performance at BTME.

Available through both JCB Groundcare and Countax dealers, the JCB branded D20-50 is built to class leading specifications in terms of power, versatility and efficiency.

Powered by a direct injection V-twin 20hp diesel engine, the tractor is highly economic with increased cutting between fills. Ideally suited for coverage of up to 10 acres, the JCB model has a grass collecting capacity of 380 litres.

In addition to power assisted steering, a series of automated functions make the D20-50 simple and convenient to use. The electronic 'dial-a-height' control adjusts the level of the cutter deck depending on the application.

The interactive blade system utilises three contra-rotating blades for highly efficient cutting while the rear roller control allows the operator to set the perfect height for creating immaculate striped lawns. The high grass mulching deck uses chains fore and aft to cut long grass and scrub.

The tractor has been designed to allow quick change between attachments and is compatible with Countax's range of accessories – including trailers, cutters, scarifiers, shredders and chippers. The Power Take Off feature provides extra power when undertaking these activities.

The final feature prominent on the D20-50 is the inclusion of integral safety measures. The tractor cannot be started unless the handbrake is engaged and the tractor also boasts hydrostatic transmission with differential lock giving control on slopes and maximum traction in difficult conditions.

For further information Tel: 01844 278800.



TORO LAUNCHES

Toro debuted the ProCore 648 green aerator which will be available from May.

The self-powered, pedestrian, vertical corer has a large 48in working width which means 18 greens can be aerated in just over seven hours, enabling greenkeepers to get their greens back in play faster than ever before.

A feature of the ProCore is that its wheels are located in front of the tines, so the machine never runs over the cores.

The ProCore is powered by a 25hp Kohler petrol engine and can be fitted with both solid and hollow tines. Coring can be done at variable spacing between one-and-a-half and three inches, at depths up to four inches.

Unique Toro technology fitted to the aerator includes the TrueCore ground-following system, which automatically maintains tine depth in operation to match ground undulations and give a consistent coring depth.

In addition, Toro's patented three-wheel series/parallel traction drive, combined with high-torque, low-speed wheel motors, prevents slippage for reliable traction and even hole spacing.

Toro has designed the ProCore for easy operation. A single switch on the handle controls the tine head while a handle bail engages forward and reverse – so no shifting is required. A fail-safe system stops the machine and lifts the coring head if the handle bail is released.

Toro also unveiled its new-look Workman 3000 and 4000 heavy-duty utility vehicles, which have been given a stylish new appearance and a host of new



▲ Workman 3000



▲ Pro-Core 648

features for greater driver comfort, easier operation and better control.

Gauges and controls are made easier to reach with a higher dashboard, while the parking brake and dump lever have been repositioned for even easier operation.

For further information Tel: 01508 491400.

NEW FOUR WHEEL DRIVE MOWER

BTME saw the debut of John Deere's new 3245C four wheel drive mower the company's first five deck rotary machine for semi-rough amenity grass.

The 3245C features a John Deere Series 220 liquid cooled and turbocharged diesel engine, with a maximum power rating of 48.5hp.

Combining the ability to follow ground contours closely with optimum cutting performance, at mowing speeds of up to 9mph, the 3245C has five 53cm independent rotary rear discharge decks, made of heavy duty 10 gauge steel. These provide a total cutting width of 228cm, while height of cut is quick and easy to change, without tools, from 25 to 102mm, in 6mm increments.

Individual turn assist brakes work in conjunction with the newly designed hydrostatic foot controls to stop or slow the mower for tight turns and to provide additional traction when working on slopes.

Standard equipment includes a two post roll guard, plus front anti-scalp and rear rollers which produce an attractive striping effect.

A new Command Arm operator console, as featured on the John Deere 2500 greensmower, is designed for maximum driver comfort and convenience.

Further operator benefits include a high capacity 68 litre fuel tank for all day mowing, power steering, adjustable deluxe seat and steering column, and SOW halogen headlights for increased visibility. Options include cruise control and a mulching kit.

For further information Tel: 01949 860491.



REACHING THE PARTS...

Terrain Aeration launched "Airforce G", the company's latest hydraulic Terralift machine, specifically designed for deep, compressed air de-compaction treatment on golf courses.

Sporting a new engine and compressor combination, manufactured by Pneumofore, the Turin based Italian light engineering specialists, Airforce G retains the hydraulically driven JCB hammer and rams used in the Airforce prototype, and remains true to the original Terralift technology.

Terrain's Managing Director, David Green, who has designed and built the new machine, explained that at two feet shorter, and approx 300Kg lighter, Airforce G is more compact and has greater manoeuvrability than its predecessor without losing the one tonne of down force available to deliver the probe one metre down through compacted soil.

"Airforce G has lost 250Kg on the new engine and compressor alone and we've been able to reduce the wheelbase by half a metre, bringing the overall machine weight down to the one tonne target. It's also quieter due to the sound proof casing."

For further information Tel: 01449 673783.

CENTENARY YEAR

BTME marked the start of an exciting year for Barenbrug, as the company underlines its pedigree in specialist grass seed breeding by celebrating its centenary.

The company launched its new 2004 catalogue at Harrogate. The guide to Barenbrug cultivars and mixtures also contains advice and information on all applications, together with recommended sowing rates and depths.

Barenbrug also unveiled a new mixture which it claims is the ultimate low maintenance product. Called BAR 40, it's ideal for golf greens, tees and surrounds, as well as the landscaping market. It contains 75% Barkoel crested

hairgrass and 25% Barcrown slender creeping red fescue, and offers all Barkoel characteristics such as low maintenance, disease resistance, low thatch production and good all-year-round colour.

Heading the list for recovery is Romance perennial ryegrass, a cultivar included in both BAR 7, the UK's leading sports renovation mixture and BAR 8 construction mixture, with a new specification, for 2004. Bred by Barenbrug Research, Romance combines recovery characteristics with wear tolerance. It offers good shoot density while maintaining a consistent mid-green colour in both summer and winter, making it ideal for heavy duty sports turf use and turf production.

For further information Tel: 01359 272000.

NEW CAMPEY HARVESTER

The new trailed Raycam Core Harvester from Campey TurfCare Systems collects cores speedily via its fully floating and adjustable pick-up head, having been gathered by guides extending on either side of the unit. The cores are then swept up by a rotating brush and fed via an integral conveyor into a 580-litre capacity, high-tip, side-discharge hopper, for easy collection and disposal.

Powered by a compact tractor of 24-30hp, the Raycam Core Harvester's steering axle enables the unit to be positioned exactly in relation to the tractor line. The machine is powered by an independent hydraulic system, via a pump mounted on the tractor's rear power take-off.

By using the Raycam Turf Harvester, turf professionals can achieve a clean playing surface quickly and efficiently, with minimal labour. An added advantage is that treated areas can be brought back into play in considerably less time, so that there is less likelihood of losing revenue through having to close part or all of a facility.

